

ROOM FINISH SCHEDULE

NO.	ROOM NAME	FLOOR	BASE	NORTH	EAST	SOUTH	WEST	MAT.	HT.	REMARKS
100	WAREHOUSE	SC-1	NONE	EX ST	EX ST	EX ST	EX ST	EX ST	EX ST	VARIABLES
101	WAREHOUSE	SC-1	NONE	EX ST	EX ST	EX ST	EX ST	EX ST	EX ST	VARIABLES

MATERIALS LEGEND

CODE	PRODUCT	MANUFACTURER
PNT-1	PAINT	SW OR EQUAL
EX ST	EXPOSED STRUCT. NOT PAINTED	
LINER PNL	PREFINISHED STEEL LINER PANEL	
SC-1	SEALED CONCRETE	CURE & SEAL

DOOR & FRAME SCHEDULE

DR.	NO.	SIZE	DOOR	TYPE MATERIAL	FIN.	LITE	FRAME	LITE TYPE MATERIAL	FIN.	LITE HARDWARE	COMMENTS	LABEL
	100	3'-0" X 7'-0"	A	HOLLOW METAL	PNT-1	I	HOLLOW MTL		PNT-1	1.2,5,11,12,14,17		
	100A	12'X14'	B	STEEL	PREFINISHED				PREFINISHED			
	100B	12'X14'	B	STEEL	PREFINISHED				PREFINISHED			
	100C	12'X14'	B	STEEL	PREFINISHED				PREFINISHED			
	101	12'X14'	B	STEEL	PREFINISHED				PREFINISHED			
	101A	3'-0" X 7'-0"	A	HOLLOW METAL	PNT-1	I	HOLLOW MTL		PNT-1	1.2,5,11,12,14,17		
	101B	3'-0" X 7'-0"	A	HOLLOW METAL	PNT-1	I	HOLLOW MTL		PNT-1	1.3,4,11,12,14,17		
	101C	10'X10'	B	STEEL	PREFINISHED				PREFINISHED			

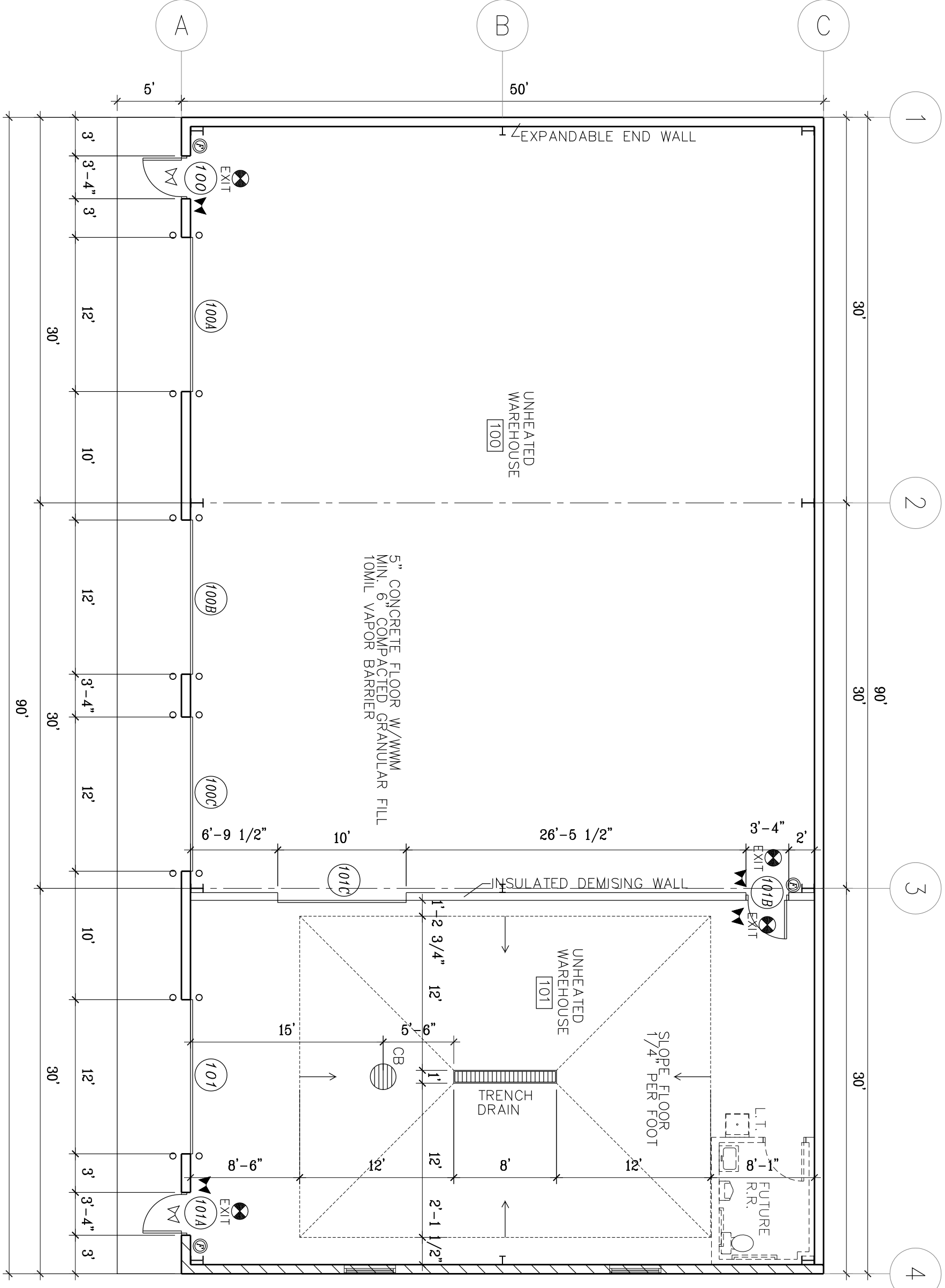
NOTE: ALL KEYS TO LOCKABLE AREAS SHOULD ALSO OPEN THE MAIN ENTRANCE DOORS.

HARDWARE

1 CLOSER	7 PRINCY SET	13 PRINC HARDWARE
2 ENTRANCE LOCKSET	8 PUSH / PULL (AS APPROPRIATE)	14 RACK PLATE (FINISH TO MATCH HARDWARE)
3 PASSAGE SET	9 THUMB-TURN	15 OFFICE LOCKSET
4 WALL BUMPER GUARD	10 DEAD BOLT	16 ELECTRIC OPENER
5 ALUMINUM THRESHOLD	11 WEATHERSTRIPPING	17 HOLD-OPEN W/SAFETY RELEASE
6 STORAGE ROOM LOCKSET	12 SWEEP	
		PRE PREFINISHED M/C/METAL CLAD/WOOD
		STN STAIN

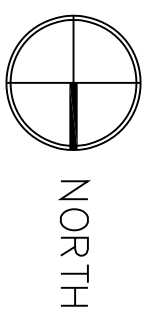
NOTE: ALL DOOR HARDWARE TO BE A.D.A. COMPLIANT

NOTE: ALL EXTERIOR DOORS TO RECEIVE WEATHERSTRIPPING AND INSULATION

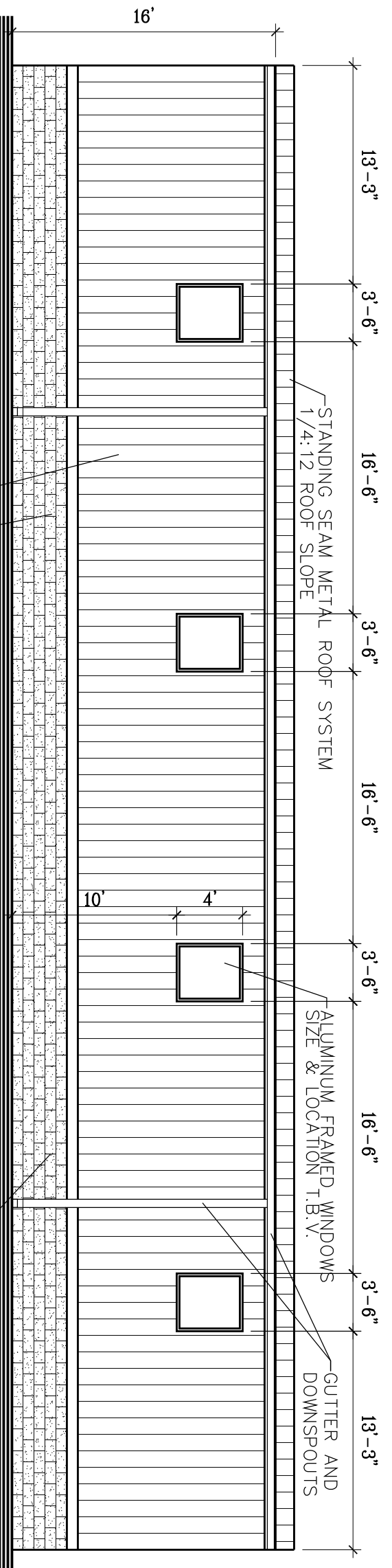


LEGEND & NOTES

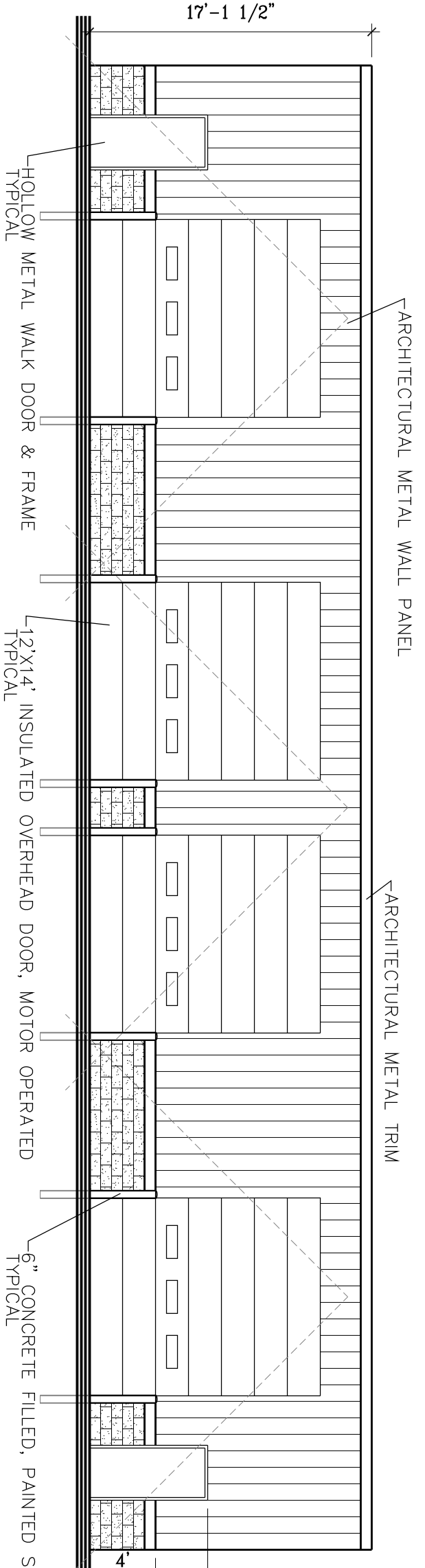
SYMBOL	DESCRIPTION	SYMBOL	DESCRIPTION
100	ROOM NUMBER	TY	EXT. EMERGENCY EGRESS LIGHTING
101	DOOR NUMBER	INT.	EMERGENCY EGRESS LIGHTING
102	WINDOW NUMBER	FE	FIRE EXTINGUISHERS
EXIT	EXIT LIGHTS		



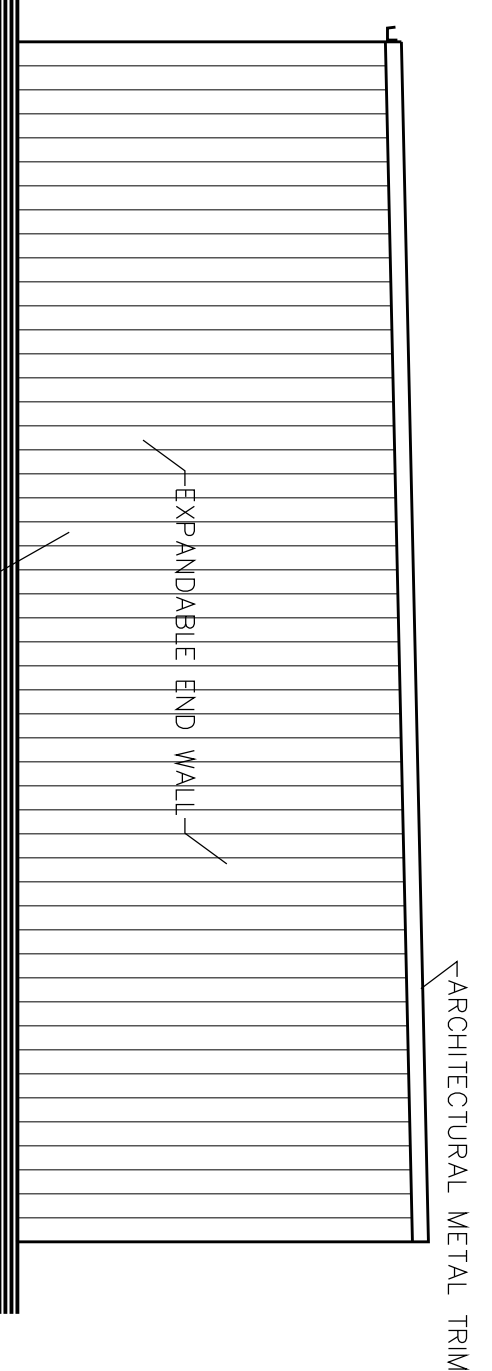
1 FLOOR PLAN
A1.0 1/8" = 1'-0"



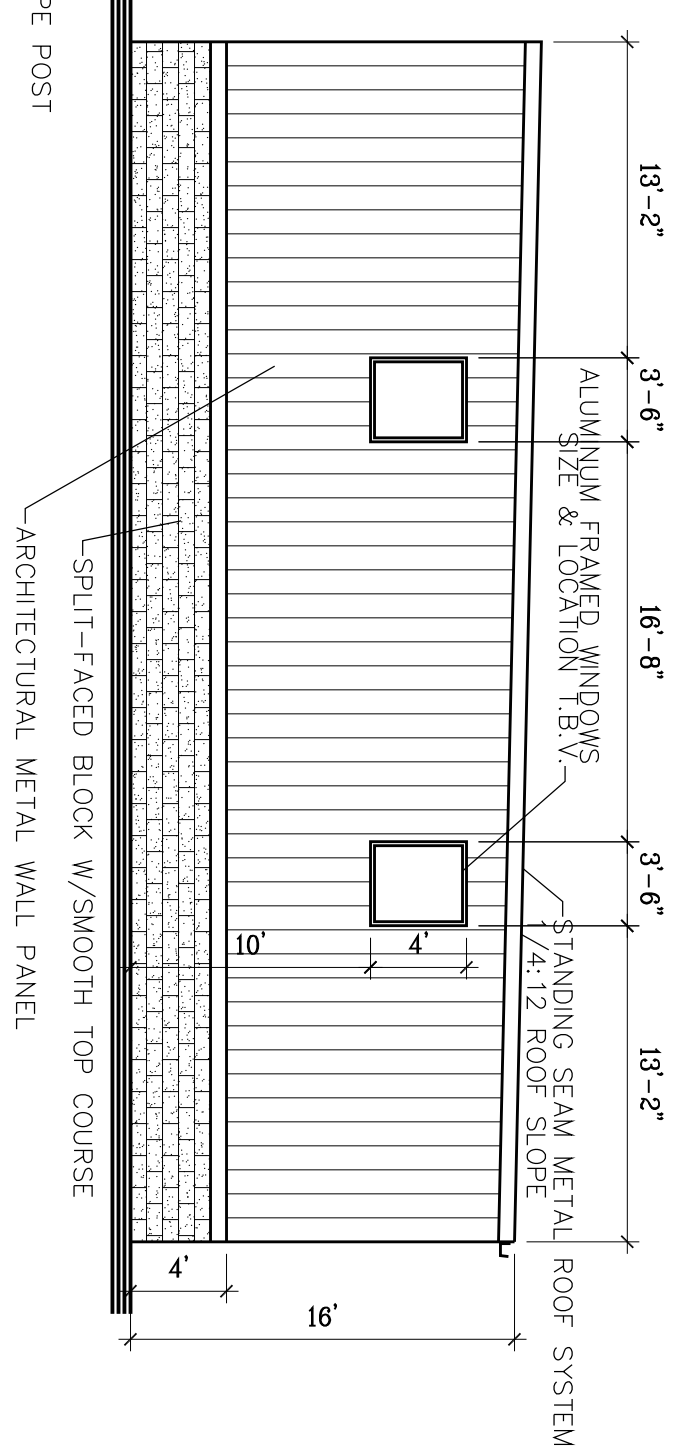
2 WEST ELEVATION
A1.0 1/8" = 1'-0"



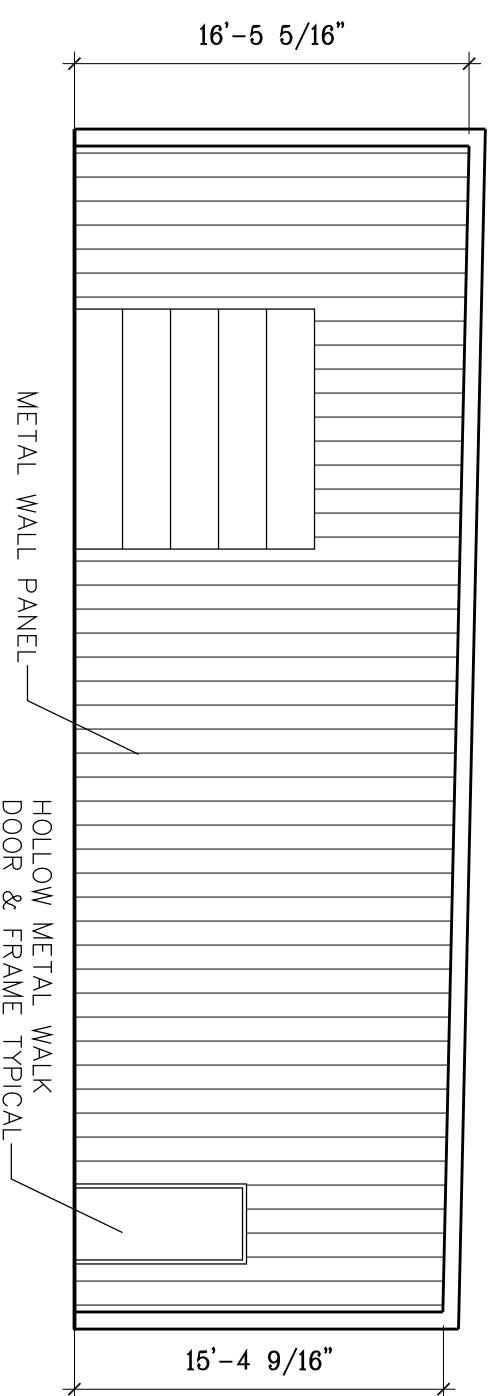
4 EAST ELEVATION
A1.0 1/8" = 1'-0"



3 SOUTH ELEVATION
A1.0 1/8" = 1'-0"



5 NORTH ELEVATION
A1.0 1/8" = 1'-0"



6 INTERIOR ELEVATION
A1.0 1/8" = 1'-0"

DOOR TYPES
SCALE: 1/8" = 1'-0"

FRAME TYPES
SCALE: 1/8" = 1'-0"

<p>1770 EXECUTIVE DRIVE OCONOMOWOC, WI 53066 PHONE: (262) 567-6677 FAX: (262) 567-4676</p>	<p>PROJECT TITLE</p> <p>PROPOSED BUILDING FOR: PORTA-PAINTING, INC.</p> <p>313 TRAVIS LN WAUKESHA, WISCONSIN 53189</p>	<p>PROJECT INFORMATION</p> <p>PROJECT NO. : DATE : 09/11/18 DRAWN BY : RAB SCALE : AS NOTED SHEET TITLE : FLOOR PLAN & ELEVATIONS</p>	<p>REVISIONS</p> <table border="1"> <tr> <td>1</td> <td></td> </tr> </table>	1	
	1				
<p>A1.0</p>					