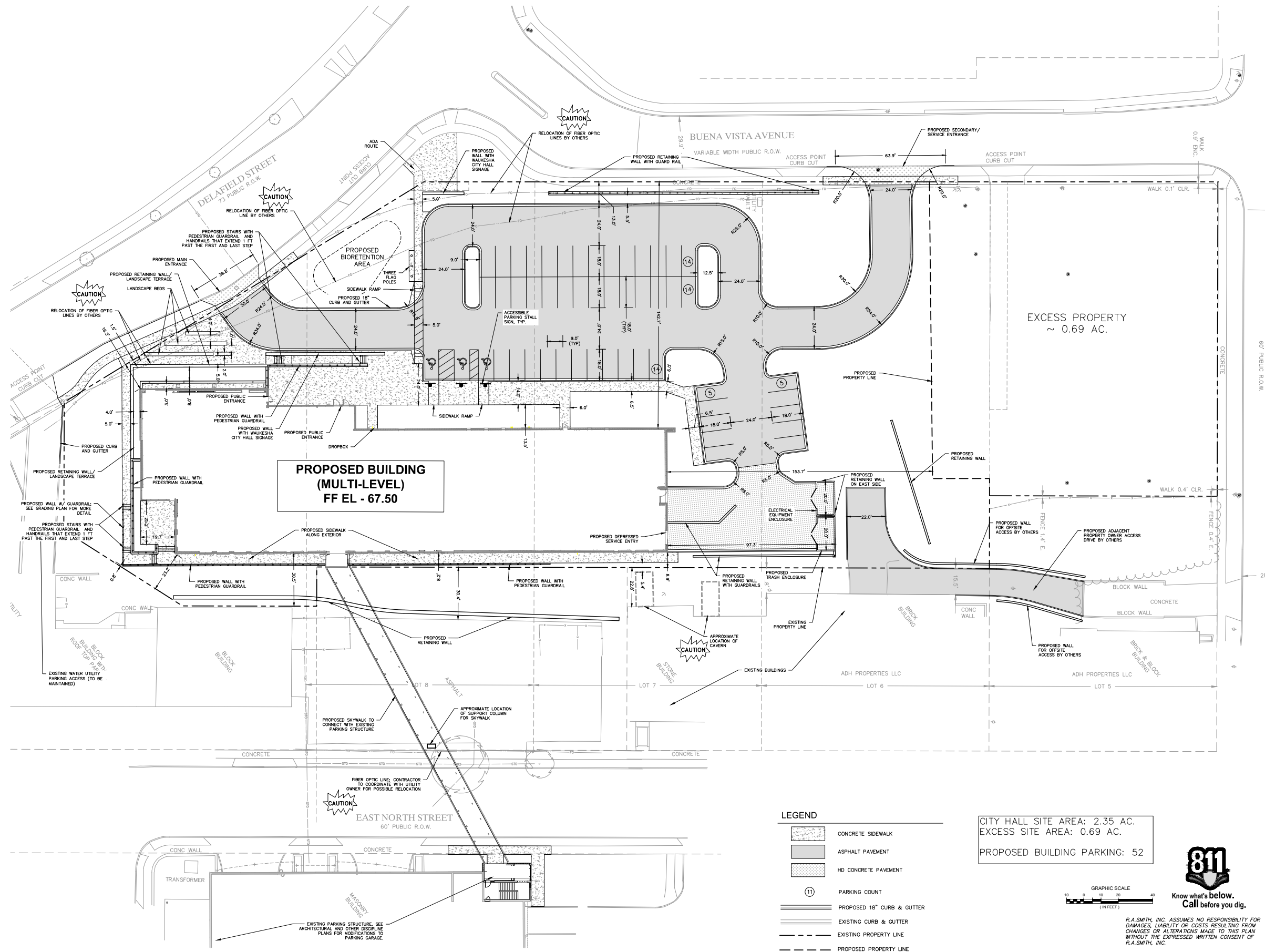


CITY OF WAUKESHA | CITY HALL

COMMON COUNCIL PRESENTATION

04.04.2019





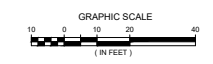
**PROPOSED BUILDING  
(MULTI-LEVEL)  
FF EL - 67.50**

EXCESS PROPERTY  
~ 0.69 AC.

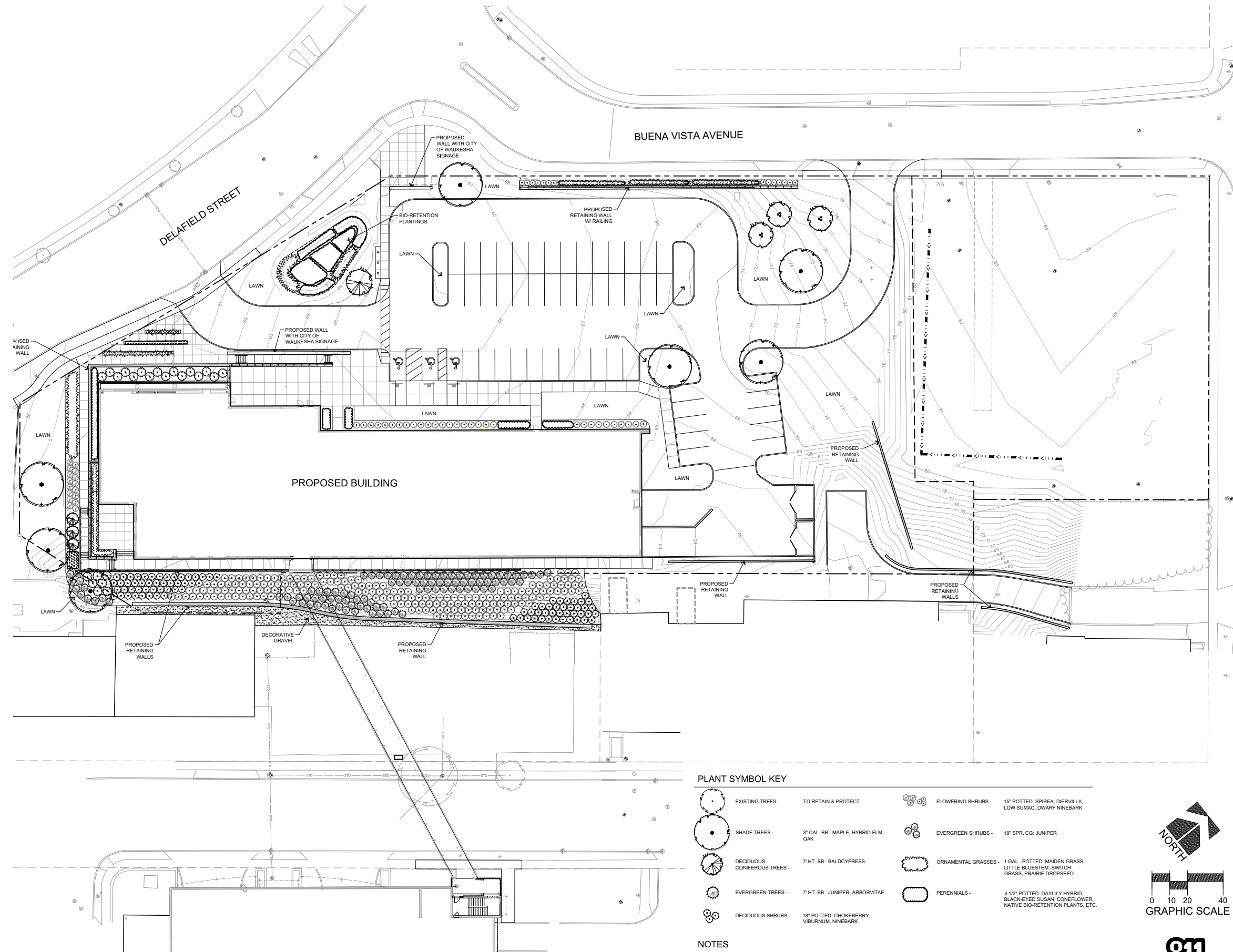
**LEGEND**

- CONCRETE SIDEWALK
- ASPHALT PAVEMENT
- HD CONCRETE PAVEMENT
- PARKING COUNT
- PROPOSED 18" CURB & GUTTER
- EXISTING CURB & GUTTER
- EXISTING PROPERTY LINE
- PROPOSED PROPERTY LINE

CITY HALL SITE AREA: 2.35 AC.  
EXCESS SITE AREA: 0.69 AC.  
PROPOSED BUILDING PARKING: 52



R.A.SMITH, INC. ASSUMES NO RESPONSIBILITY FOR DAMAGES, LIABILITY OR COSTS RESULTING FROM CHANGES OR ALTERATIONS MADE TO THIS PLAN WITHOUT THE EXPRESSED WRITTEN CONSENT OF R.A.SMITH, INC.



PLANT SYMBOL KEY

	EXISTING TREES - TO RETAIN & PROTECT		FLOWERING SHRUBS - 15' POTTED: SPIREA, DIERVILLA, LOW SUMAC, DWARF NINEBARK
	SHADE TREES - 3" CAL. BB: MAPLE, HYBRID ELM, OAK		EVERGREEN SHRUBS - 18" SPR. CG. JUNIPER
	DECIDUOUS CONIFEROUS TREES - 7 HT. BB: BALDCYPRESS		ORNAMENTAL GRASSES - 1 GAL. POTTED: MAIDEN GRASS, LITTLE BLUESTEM, SWITCH GRASS, PRAIRIE DROPSSEED
	EVERGREEN TREES - 7 HT. BB: JUNIPER, ARBORVITAE		PERENNIALS - 4 1/2" POTTED: DAYLILY HYBRID, BLACK-EYED SUSAN, CONEFLOWER, NATIVE BIO-RETENTION PLANTS, ETC.
	DECIDUOUS SHRUBS - 18" POTTED: CHOKEBERRY, VIBURNUM, NINEBARK		

NOTES

- BIORETENTION PLANTINGS SHALL BE CHOSEN IN PART BASED ON ABILITY TO WITHSTAND PERIODS OF INUNDATION AND DROUGHT.

