

# SITE PLAN

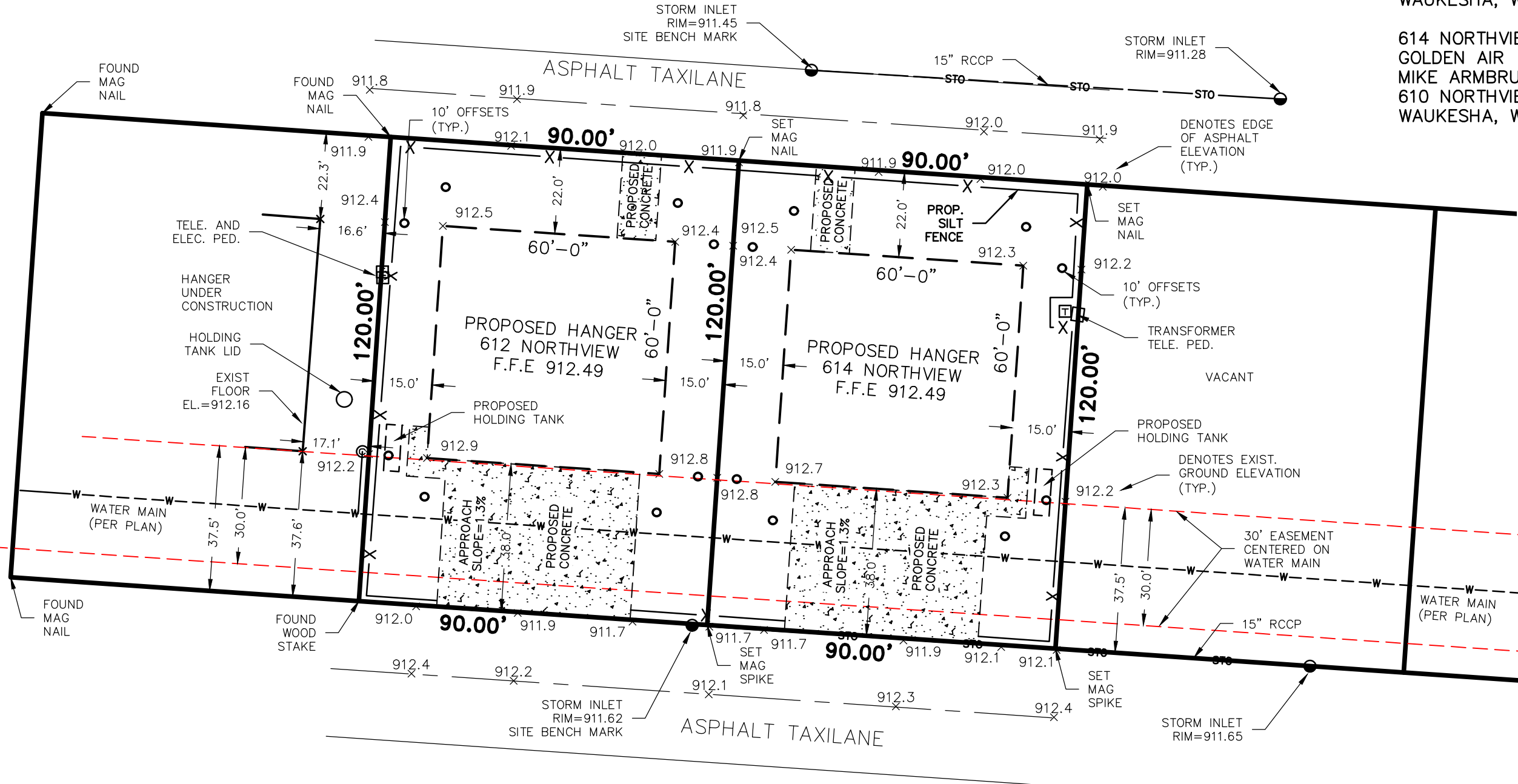
612 AND 614 NORTHVIEW, WAUKESHA COUNTY AIRPORT, WAUKESHA, WISCONSIN

PREPARED BY:  
 raSmith  
 WILLIAM R. HENRICHS PLS  
 16745 W. BLUEMOUND RD.  
 BROOKFIELD, WI. 53005-5938  
 262-317-3265

169420 WRH  
 JULY 8, 2024

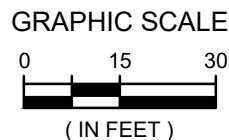
PREPARED FOR:  
 612 NORTHVIEW  
 TEN MILE, LLC  
 MIKE ARMBRUSTER  
 610 NORTHVIEW ROAD  
 WAUKESHA, WI 53188

614 NORTHVIEW  
 GOLDEN AIR  
 MIKE ARMBRUSTER  
 610 NORTHVIEW ROAD  
 WAUKESHA, WI 53188



R.A.SMITH, INC. ASSUMES NO RESPONSIBILITY FOR DAMAGES, LIABILITY OR COSTS RESULTING FROM CHANGES OR ALTERATIONS MADE TO THIS PLAN WITHOUT THE EXPRESSED WRITTEN CONSENT OF R.A.SMITH, INC.

ALL COPYRIGHTS TO THESE DRAWINGS ARE RESERVED. THEY MAY NOT BE COPIED, CHANGED, OR ASSIGNED TO ANY THIRD PARTY IN ANY MANNER WITHOUT OBTAINING THE EXPRESSED WRITTEN PERMISSION OF R.A.SMITH, INC.



**raSmith**  
 CREATIVITY BEYOND ENGINEERING  
 16745 W. Bluemound Road  
 Brookfield, WI 53005-5938  
 (262) 781-1000  
 rasmith.com

S:\5169420\Dwg\169420 POS.dwg, 11 x 17 (B), 7/10/2024 12:07:32 PM, wrh