

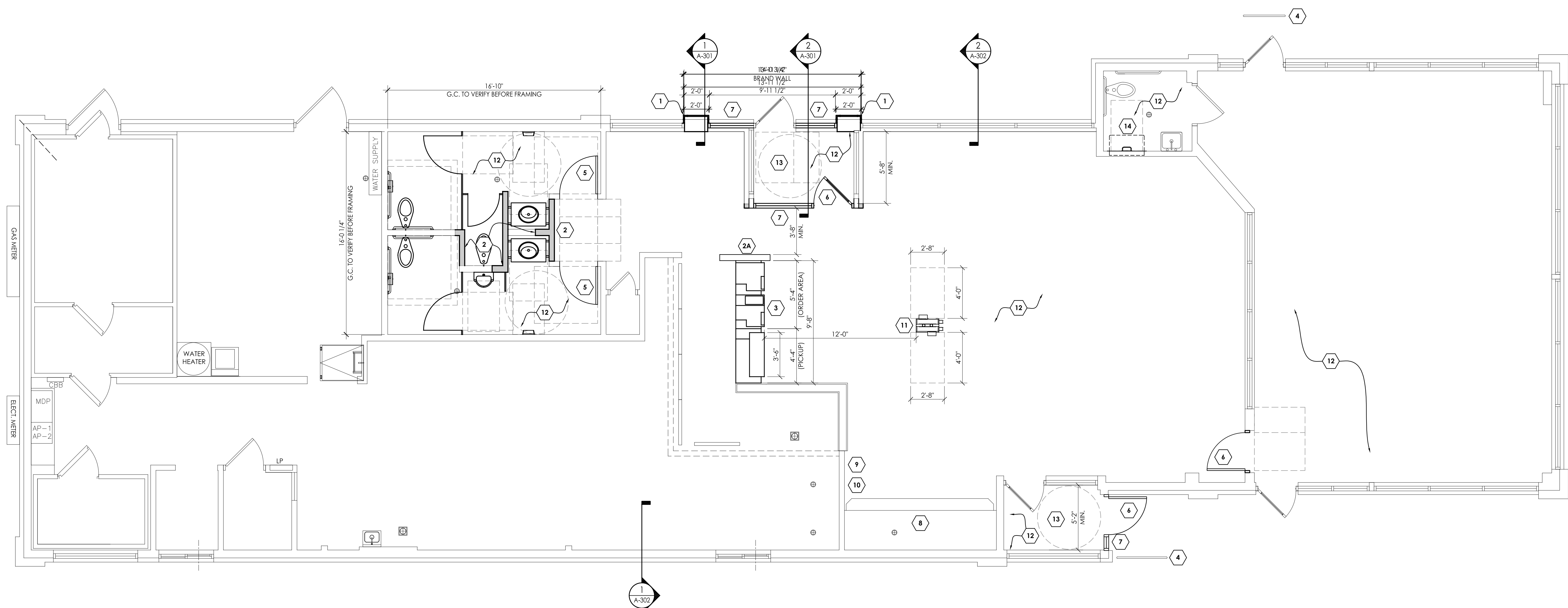


haag müller, inc.

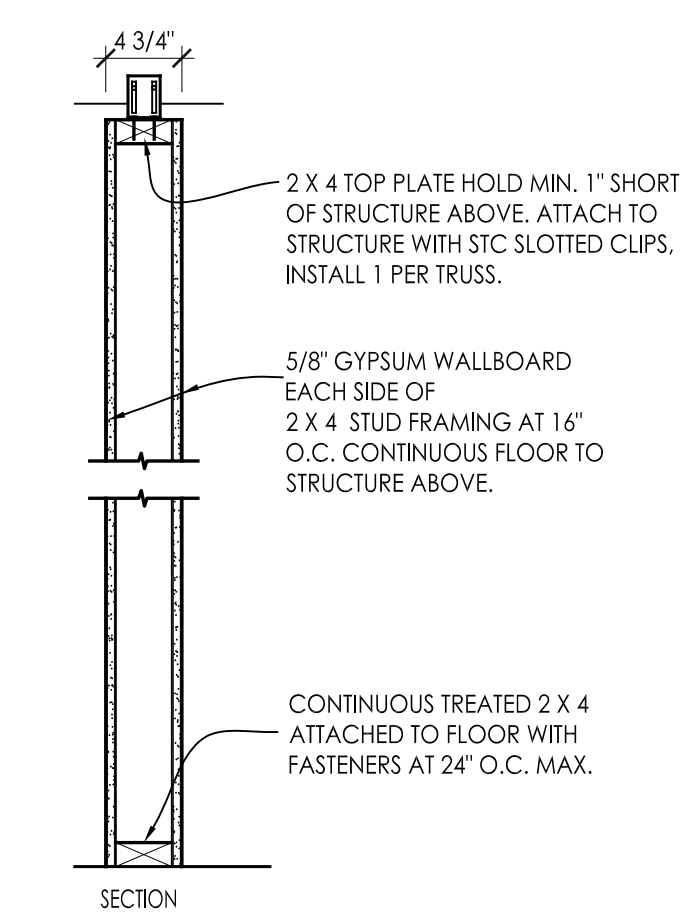
Architecture • Engineering • Interiors

101 East Grand Avenue, Suite 1
Port Washington, Wisconsin 53074
262.268.1200 www.haagmuller.com

© 2018 haag müller, inc.



1 FLOOR PLAN
SCALE: 1/4" = 1'-0"



1 TYP. PARTITION TYPE
1" = 1'-0"
1A 2 X 6 PARTITION TYPE
1" = 1'-0"

FLOOR PLAN GENERAL NOTES:

- 1. ALL INTERIOR FINISHES TO BE PROVIDED BY INTERIOR DESIGNER - BY OTHERS.
2. DECORATIVE MATERIALS SHALL BE FLAME RETARDANT.
3. EXITS, EXIT LIGHTS, FIRE ALARM STATIONS, HOSE CABINETS, AND EXTINGUISHER LOCATIONS SHALL NOT BE CONCEALED BY DECORATIVE MATERIAL.
4. DIMENSIONS ON PLAN ARE NOMINAL. GENERAL CONTRACTOR TO FIELD VERIFY ALL DIMENSIONS.
5. 5% OF DINING ROOM SEATING IS REQUIRED TO BE ACCESSIBLE AND SHALL BE EVENLY DISPERSED.
6. SUPPLIER INFORMATION FOR McDONALD'S ACCESSIBILITY SIGN PACKAGE:

FORREST PERMA-SIGNS, 92 FIRST STREET
P.O. BOX 588
NEW ROCHELLE, NY 10802
ATTN: TOM GIORDANO
OFFICE: 800-214-8765
DIRECT: 914-632-9892
FAX: 914-632-7416

FLOOR PLAN KEYED NOTES:

THE FOLLOWING FLOOR PLAN KEYED NOTES ARE ENCLOSED WITH A SYMBOL ON THE FLOOR PLAN.

- 1. NEW BRAND WALL. SEE SECTIONS 1 & 2/A-301 FOR MORE INFORMATION ON FRAMING AND MATERIALS.
2. NEW INTERIOR WALL CONSTRUCTION. REFER TO PARTITION TYPE DETAILS ON THIS SHEET FOR MORE INFORMATION.
2A. HALF WALL. SEE INTERIOR DRAWINGS.
3. NEW MODULAR DUAL POINT FRONT COUNTER SYSTEM. REFER TO INTERIOR DESIGN DRAWINGS FOR MORE INFORMATION.
4. EXISTING GUARD RAIL: PRIME AND PAINT TO MATCH FIELD COLOR PER COLOR TABLE ON SHEET A-201.
5. NEW INTERIOR DOOR. SEE DOOR AND HARDWARE SCHEDULES ON SHEET A-402. VERIFY W/ INTERIOR DESIGN DRAWINGS.
6. NEW STOREFRONT DOORS: OFFSET PIVOT HINGES, 1" CLEAR LOW-E INSULATED GLASS. FRAMES TO BE THERMALLY BROKEN. DOORS SHALL HAVE 10" BOTTOM STILE AND ACCESSIBLE LOOP HANDLE ON PULL SIDE. COLOR TO BE NATURAL ANODIZED ALUMINIUM (MATCH EXISTING). ADD PANIC HARDWARE AND CLOSER TO ENTRANCE DOORS ONLY. SEE DOOR AND HARDWARE SCHEDULES ON SHEET A-402.

- 7. NEW EXTERIOR GLAZING: 1" CLEAR LOW-E INSULATED GLASS. FRAMES TO BE THERMALLY BROKEN. COLOR TO BE NATURAL ANODIZED ALUM. (PROVIDE TEMPERED GLASS WHERE SILL HEIGHT IS LESS THAN 24" A.F.F. OR IMMEDIATELY ADJACENT TO DOOR)
8. EXISTING SSB LOCATION TO REMAIN AS IS.
9. POSTING OF OCCUPANT LOAD: OCCUPANT LOAD = 126 (SEE COVER SHEET). EVERY ROOM OR SPACE THAT IS AN ASSEMBLY OCCUPANCY SHALL HAVE THE OCCUPANT LOAD OF THE ROOM OR SPACE POSTED IN A CONSPICUOUS PLACE, NEAR THE MAIN EXIT OR EXIT ACCESS DOORWAY FROM THE ROOM OR SPACE. POSTED SIGNS SHALL BE OF AN APPROVED LEGIBLE PERMANENT DESIGN AND SHALL BE MAINTAINED BY THE OWNER OR AUTHORIZED AGENT.
10. ADD STAFF ASSISTANCE SIGNAGE AT SSB.
11. NEW TWO SIDED ORDER KIOSKS. SEE ELECTRICAL SHEETS FOR CONNECTION INFORMATION.
12. NEW FLOOR TILE & BASE PER INTERIOR DESIGN PLANS.
13. WALK-OFF MAT TO REMAIN IF CONDITION WARRANTS.
14. INSTALL BABY CHANGING STATION, AS PER DETAILS ON A-401.

FLOOR PLAN
MAJOR REMODEL PROJECT
MCDONALD'S RESTAURANT (SITE ID # 480505)
801 MEADOWBROOK ROAD
CITY OF WAUKESHA, WISCONSIN

Table with columns: NO., DATE, DESCRIPTION, and revision information. Includes project details like DATE: 1-15-18, PROJ. NO: 1708145, DRAWN BY: TWG, SHEET: A-101.



haag müller, inc.
Architecture • Engineering • Interiors

101 East Grand Avenue, Suite 1
Port Washington, Wisconsin 53074
262.268.1200 www.haagmuller.com

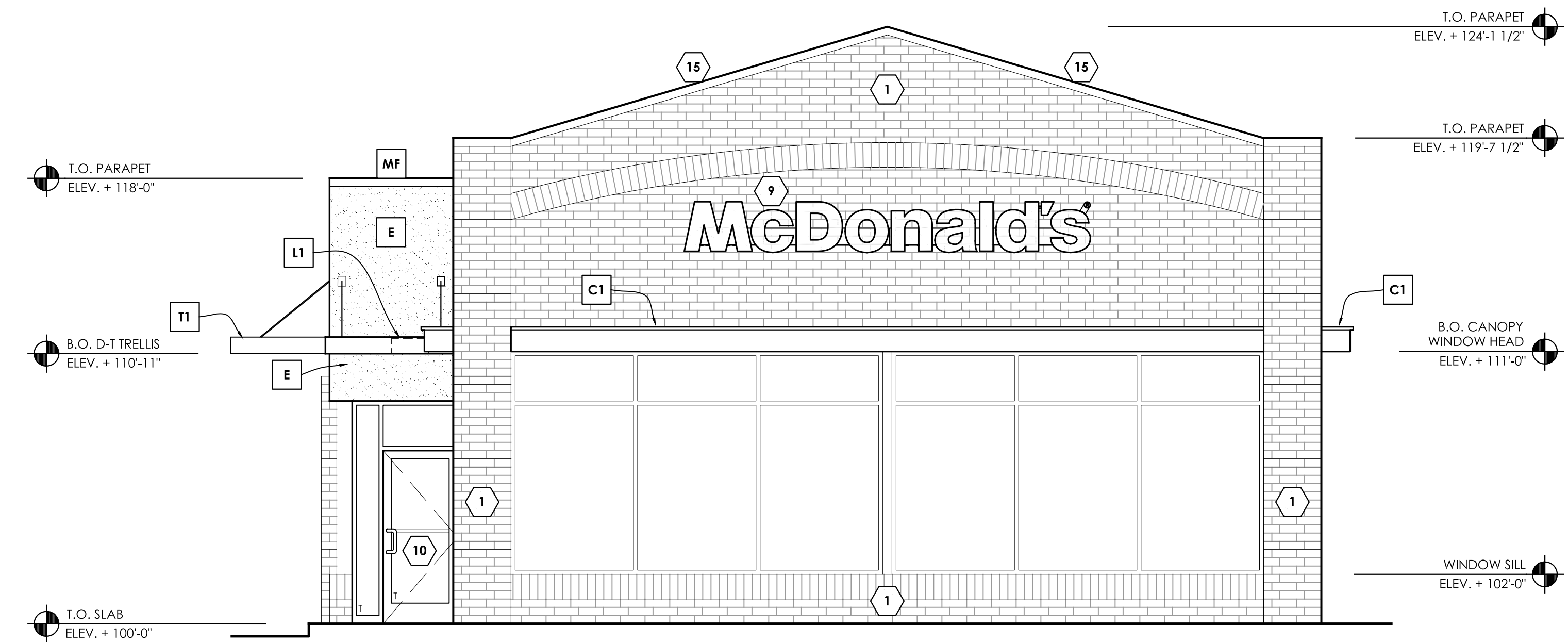
© 2018 haag müller, inc.



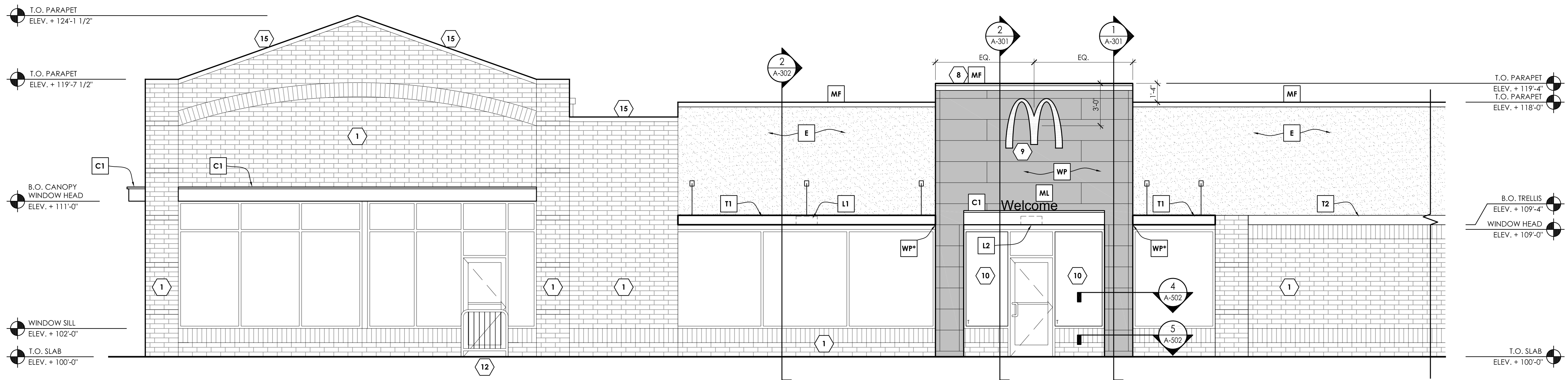
SIGNAGE SUMMARY (PER CH. 27: SIGNS & OUTDOOR ADVERTISING)		
ELEVATION	FLAT SIGNS ALLOWED	PROPOSED
SOUTH / FRONT	79.5 SF	33 SF
EAST / NON DT SIDE	244 SF	14 SF
NORTH / REAR	79.5 SF	14 SF
WEST / DT SIDE	244 SF	33 SF

MATERIAL COLOR TABLE	
1.) ALL COLORS LISTED HERE UNLESS DESCRIBED IN THE KEYED NOTES. 2.) ALL PAINT COLORS LISTED ARE BENJAMIN MOORE	
CORE 16 MRP COLOR SCHEME	CRAFTSMAN
FIELD COLOR: (EIFS)	BENJAMIN MOORE: FAIRVIEW TAUPE HC-85
ACCENT COLOR: (BRAND WALL)	CUSTOM COLOR: BENJAMIN MOORE IRON MOUNTAIN 2134-30

- E.I.F.S. GENERAL NOTES:**
- E.I.F.S. EXPANSION JOINTS PER MFG. THE FOLLOWING REQUIREMENTS ARE BASED ON DRYVIT MANUFACTURING STANDARDS. AS A MINIMUM, EXPANSION JOINTS SHALL BE PLACED AT THE FOLLOWING LOCATIONS:
- WHERE EXPANSION JOINTS OCCUR IN THE SUBSTRATE SYSTEM.
 - WHERE BUILDING EXPANSION JOINTS OCCUR.
 - AT FLOOR LINES IN WOOD FRAME CONSTRUCTION.
 - AT FLOOR LINES OF NON-WOOD FRAMED BUILDINGS WHERE SIGNIFICANT MOVEMENT IS EXPECTED.
 - WHERE THE OUTSULATION PLUS SYSTEM ABUTS DISSIMILAR MATERIALS.
 - WHERE THE SUBSTRATE TYPE CHANGES.
 - WHERE PREFABRICATED PANELS ABUT ONE ANOTHER.
 - IN A CONTINUOUS ELEVATION AT INTERVALS NOT EXCEEDING 75 FEET.
 - WHERE SIGNIFICANT STRUCTURAL MOVEMENT OCCURS, SUCH AS CHANGES IN ROOFLINE, BUILDING SHAPE OR STRUCTURAL SYSTEM.



1 SOUTH/FRONT ELEVATION
SCALE: 1/4" = 1'-0"



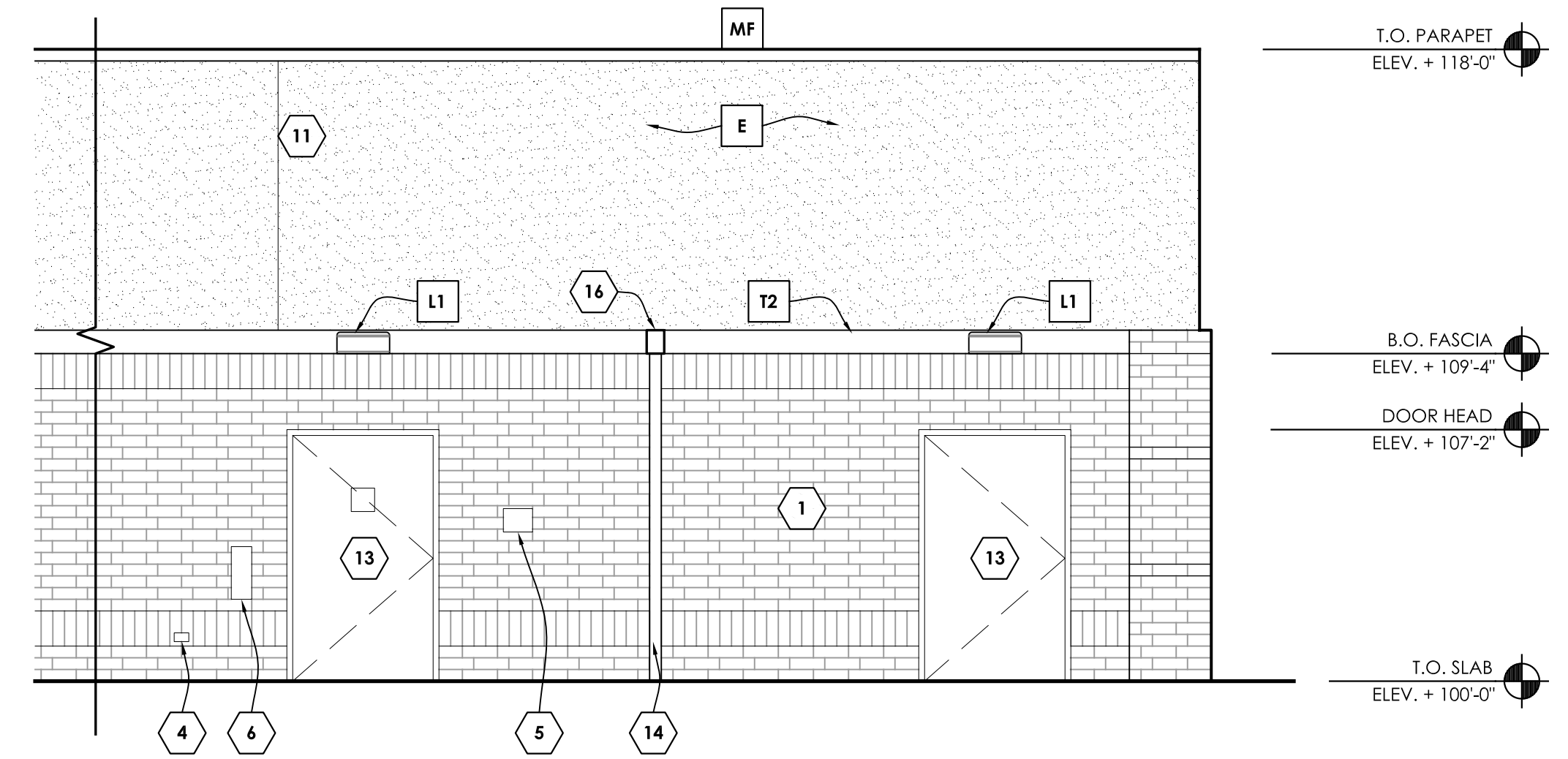
2 PARTIAL EAST/NON-DRIVE-THRU ELEVATION
SCALE: 1/4" = 1'-0"

ELEVATION KEYED NOTES - GROUP ONE NOTES:

- THE FOLLOWING ELEVATION KEYED NOTES ARE ENCLOSED WITH A SYMBOL ON THE ELEVATIONS.
- C1 CANOPY: 1'-6" DEEP BY 12" HIGH ILLUMINATED CANOPY. COLOR: WHITE. SEE DETAILS 2 & 3/A-306 & ROOF PLAN.
 - E WATER MANAGED E.I.F.S. (EXTERIOR INSULATION FINISH SYSTEM) OUTSULATION PLUS MD BY DRYVIT OR EQUAL. PROVIDE PANZER 20 IMPACT MESH IN ALL E.I.F.S BELOW ELEV +108'-0". FINISH: HYDROPHOPIC. TEXTURE: SANDBLAST. IN ADDITION TO EXPANSION JOINTS SHOWN, PROVIDE EXPANSION JOINTS AT INSIDE CORNERS, ALL OTHERS TO BE FIELD LOCATED PER MFG SPECS. COLORS PER COLOR TABLE THIS SHEET. SEE BUILDING SECTIONS & SHEET A-307 FOR DETAILS.
 - L RADIAL WALL SCNCE. DOWNLIGHT ONLY. AVAILABLE THROUGH SECURITY LIGHTING. INSTALL PER MANUFACTURER'S INSTRUCTIONS. SEE ELECTRICAL SHEETS FOR SPECIFICATIONS AND ROOF PLAN FOR SPACING.
COLOR: L1 = SILVER
COLOR: L2 = WHITE
 - MF ALUMINUM EDGE FASCIA: BY METAL-ERA COLOR: COLOR: CITYSCAPE. SEE DETAIL 9/A-304.
 - ML "WELCOME" SIGN. CURRENT SIGN MANUFACTURER FOR SIGNAGE PACKAGE IS: EVERBRITE (414-529-3500).
 - T1 TRELLIS: 4'-0" DEEP BY 8" HIGH ALUM. WITH COLOR COORDINATED TIE-BACKS. COLOR: CITYSCAPE. SEE DETAIL 2/A-304 & ROOF PLAN.
 - T2 2x8 ALUM. FASCIA BAND. COLOR: CITYSCAPE. SEE DETAIL 3/A-304 & ROOF PLAN.
 - WP NICHHA ARCHITECTURAL WALL PANELS: ILLUMINATION SERIES, AWP-3030. COLOR PER COLOR TABLE THIS SHEET.
* PANEL PATTERN SHALL BEGIN W/ FULL PANELS ABOVE/BELOW OPENING HEAD ELEVATION (9'-4").

ELEVATION KEYED NOTES - GROUP TWO NOTES:

- THE FOLLOWING ELEVATION KEYED NOTES ARE ENCLOSED WITH A X SYMBOL ON THE ELEVATIONS.
- EXISTING UTILITY BRICK VENEER TO REMAIN.
 - EXISTING DRIVE-THRU WINDOW TO REMAIN.
 - EXISTING GAS SERVICE METER TO REMAIN.
 - EXISTING HOSE BIBB TO REMAIN.
 - EXISTING BULK OIL FILL BOX TO REMAIN.
 - EXISTING CO2 FILL BOX TO REMAIN.
 - EXISTING ELECTRICAL SERVICE METER/PANELS TO REMAIN.
 - HIRAF LINEAR LED DOWNLIGHT LIGHT TO BE INSTALLED ALONG FRONT OF COPING. AVAILABLE FROM SECURITY LIGHTING. INSTALL PER MANUFACTURER'S SPECIFICATIONS. SEE ELECTRICAL SHEETS AND ROOF PLAN.
 - ILLUMINATED McDONALD'S SIGNAGE: LED ILLUMINATED. SIGNS MUST BE CONTROLLED VIA PHOTOCELL OR A PROGRAMMABLE LIGHTING CONTROL PANEL PER WARRANTY REQUIREMENTS. CONTROLS BY E.C. COORDINATE WITH OWNER CONTROL TYPE: PHOTOCELL OR CONTROL PANEL. CURRENT SIGN MANUFACTURER FOR SIGNAGE PACKAGE IS: EVERBRITE (414-529-3500). UNDER SEPARATE PERMIT. FINAL SIGN PACKAGE TO BE APPROVED BY MUNICIPALITY.
 - NEW STOREFRONT AND/OR GLAZING PER FLOOR PLAN. TEMPERED GLASS INDICATED WITH A 'T'.
 - E.I.F.S. CONTROL JOINTS INSTALLED PER MANUFACTURERS REQUIREMENTS.
 - EXISTING GUARD RAIL: PRIME & PAINT TO MATCH FIELD COLOR PER COLOR TABLE THIS SHEET.
 - EXISTING DOOR AND FRAME: PRIME & PAINT TO MATCH FIELD COLOR PER COLOR TABLE THIS SHEET.
 - EXISTING ROOF DRAIN PIPE: PRIME & PAINT TO MATCH FIELD COLOR PER COLOR TABLE THIS SHEET.
 - PAINT ALL EXISTING COPING ON PLAYPLACE TO MATCH NEW EDGE FASCIA (KEYED NOTE MF)
 - BOX TO COVER PIPE WALL PENETRATION PER DETAIL 6/A-502. COLOR: NATURAL ANODIZED ALUMINUM.



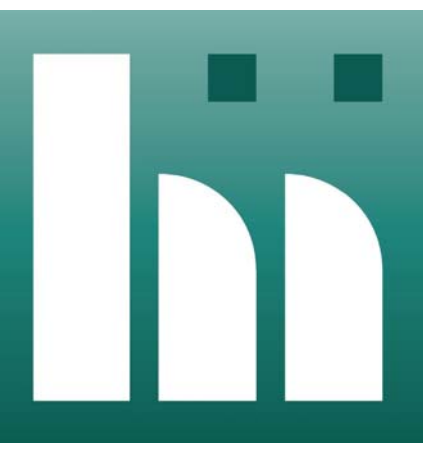
3 PARTIAL EAST/NON-DRIVE-THRU ELEVATION
SCALE: 1/4" = 1'-0"

EXTERIOR ELEVATIONS
MAJOR REMODEL PROJECT
 MCDONALD'S RESTAURANT (SITE ID # 480505)
 801 MEADOWBROOK ROAD
 CITY OF WAUKESHA, WISCONSIN

REVISIONS		DATE	DESCRIPTION
NO.			
1			
2			
3			
4			
5			
6			
7			
8			
9			
10			

DATE: 1-15-18
PROJ. NO: 1708145
DRAWN BY: BW
SHEET

A-201



haag müller, inc.
Architecture • Engineering • Interiors

101 East Grand Avenue, Suite 1
Port Washington, Wisconsin 53074
262.268.1200 www.haagmuller.com

© 2018 haag müller, inc.



SIGNAGE SUMMARY (PER CH. 27: SIGNS & OUTDOOR ADVERTISING)		
ELEVATION	FLAT SIGNS ALLOWED	PROPOSED
SOUTH / FRONT	79.5 SF	33 SF
EAST / NON DT SIDE	244 SF	14 SF
NORTH / REAR	79.5 SF	14 SF
WEST / DT SIDE	244 SF	33 SF

MATERIAL COLOR TABLE

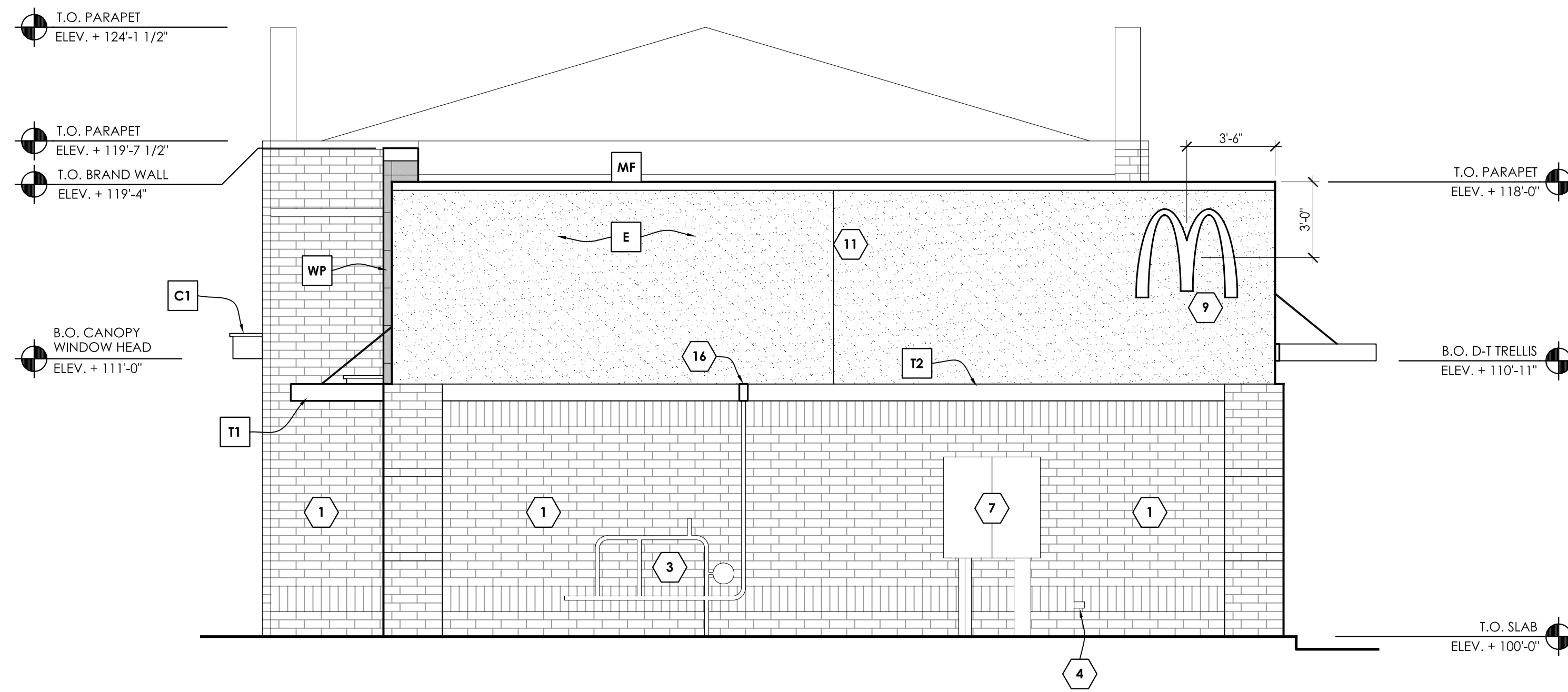
- ALL COLORS LISTED HERE UNLESS DESCRIBED IN THE KEYED NOTES.
- ALL PAINT COLORS LISTED ARE BENJAMIN MOORE

CORE 16 MRP COLOR SCHEME		CRAFTSMAN
FIELD COLOR: (EIFS)	BENJAMIN MOORE: FAIRVIEW TAUPE HC-85	
ACCENT COLOR: (BRAND WALL)	CUSTOM COLOR: BENJAMIN MOORE IRON MOUNTAIN 2134-30	

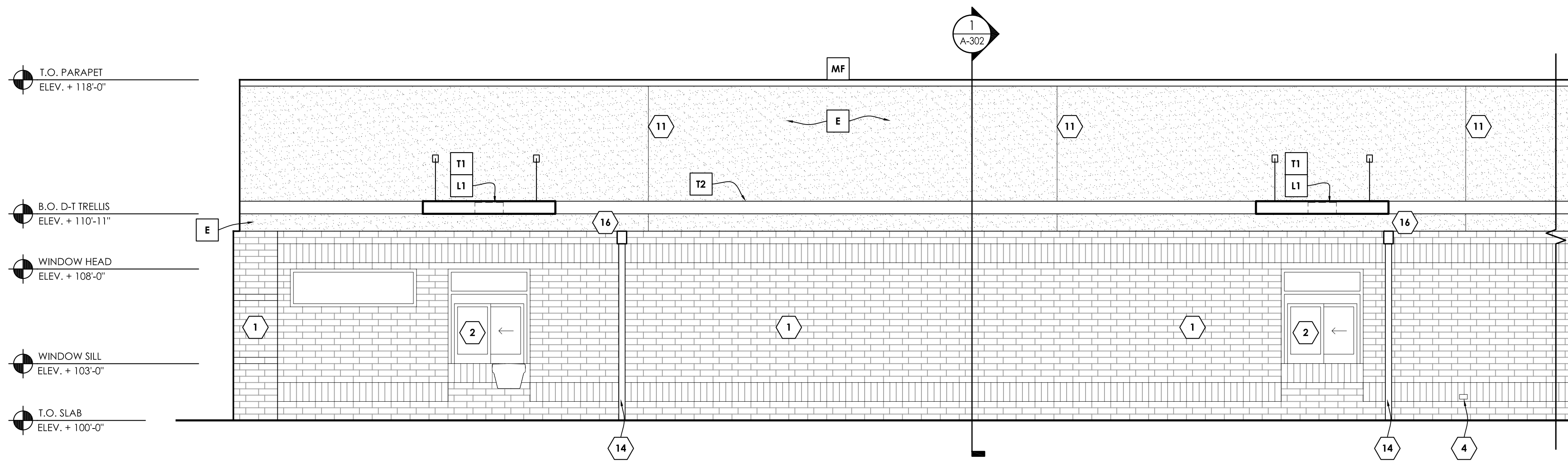
E.I.F.S. GENERAL NOTES:

E.I.F.S. EXPANSION JOINTS PER MFG. THE FOLLOWING REQUIREMENTS ARE BASED ON DRYVIT MANUFACTURING STANDARDS. AS A MINIMUM, EXPANSION JOINTS SHALL BE PLACED AT THE FOLLOWING LOCATIONS:

- WHERE EXPANSION JOINTS OCCUR IN THE SUBSTRATE SYSTEM.
- WHERE BUILDING EXPANSION JOINTS OCCUR.
- AT FLOOR LINES IN WOOD FRAME CONSTRUCTION.
- AT FLOOR LINES OF NON-WOOD FRAMED BUILDINGS WHERE SIGNIFICANT MOVEMENT IS EXPECTED.
- WHERE THE OUTSULATION PLUS SYSTEM ABUTS DISSIMILAR MATERIALS.
- WHERE THE SUBSTRATE TYPE CHANGES.
- WHERE PREFABRICATED PANELS ABUT ONE ANOTHER.
- IN A CONTINUOUS ELEVATION AT INTERVALS NOT EXCEEDING 75 FEET.
- WHERE SIGNIFICANT STRUCTURAL MOVEMENT OCCURS, SUCH AS CHANGES IN ROOFLINE, BUILDING SHAPE OR STRUCTURAL SYSTEM.



1 NORTH/REAR ELEVATION
SCALE: 1/4" = 1'-0"



2 PARTIAL WEST/DRIVE-THRU ELEVATION
SCALE: 1/4" = 1'-0"

ELEVATION KEYED NOTES - GROUP ONE NOTES:

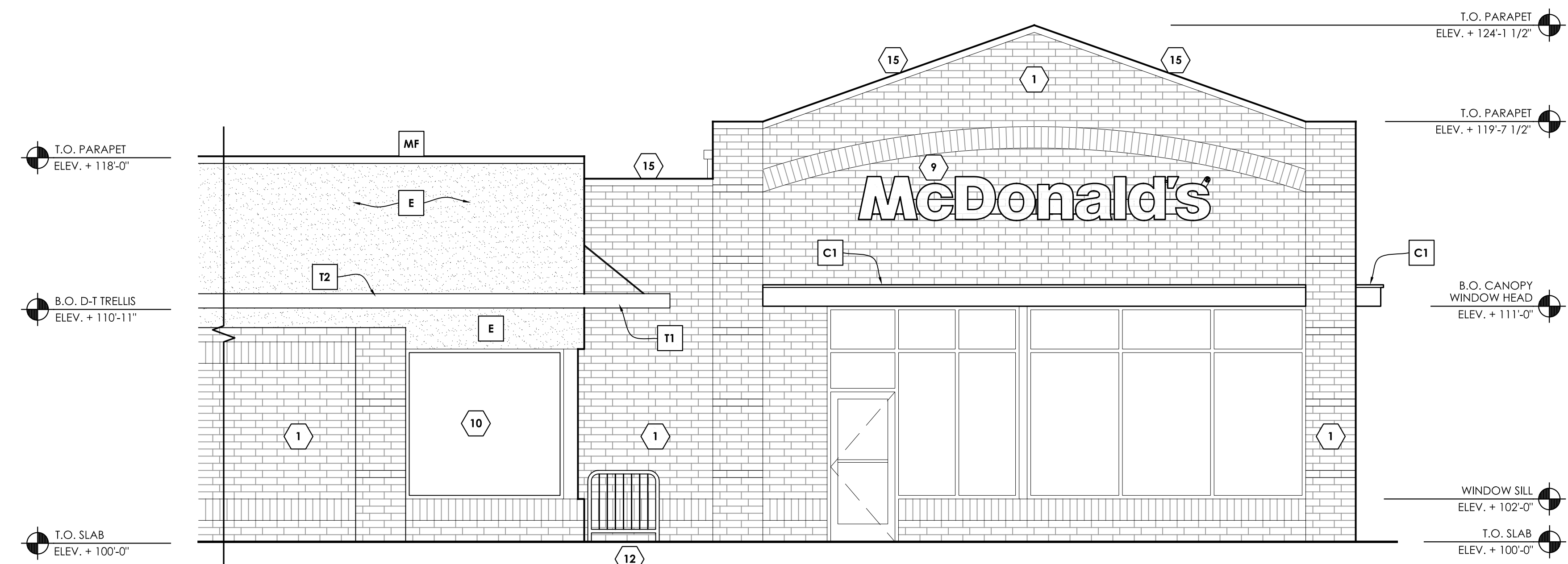
THE FOLLOWING ELEVATION KEYED NOTES ARE ENCLOSED WITH A SYMBOL ON THE ELEVATIONS.

- C1 CANOPY: 1'-6" DEEP BY 12" HIGH ILLUMINATED CANOPY. COLOR: WHITE. SEE DETAILS 2 & 3/A-306 & ROOF PLAN.
- E WATER MANAGED E.I.F.S. (EXTERIOR INSULATION FINISH SYSTEM) OUTSULATION PLUS MD BY DRYVIT OR EQUAL. PROVIDE PANZER 20 IMPACT MESH IN ALL E.I.F.S BELOW ELEV +108'-0". FINISH: HYDROPHOPIC. TEXTURE: SANDBLAST. IN ADDITION TO EXPANSION JOINTS SHOWN, PROVIDE EXPANSION JOINTS AT INSIDE CORNERS. ALL OTHERS TO BE FIELD LOCATED PER MFG SPECS. COLORS PER COLOR TABLE THIS SHEET. SEE BUILDING SECTIONS & SHEET A-307 FOR DETAILS.
- L RADIAL WALL SCONCE: DOWNLIGHT ONLY. AVAILABLE THROUGH SECURITY LIGHTING. INSTALL PER MANUFACTURER'S INSTRUCTIONS. SEE ELECTRICAL SHEETS FOR SPECIFICATIONS AND ROOF PLAN FOR SPACING. COLOR: L1 = SILVER
COLOR: L2 = WHITE
- MF ALUMINUM EDGE FASCIA: BY METAL-ERA COLOR: COLOR: CITYSCAPE. SEE DETAIL 9/A-304.
- ML "WELCOME" SIGN. CURRENT SIGN MANUFACTURER FOR SIGNAGE PACKAGE IS: EVERBRITE (414-529-3500).
- T1 TRELLIS: 4'-0" DEEP BY 8" HIGH ALUM. WITH COLOR COORDINATED TIE-BACKS. COLOR: CITYSCAPE. SEE DETAIL 2/A-304 & ROOF PLAN.
- T2 2x8 ALUM. FASCIA BAND. COLOR: CITYSCAPE. SEE DETAIL 3/A-304 & ROOF PLAN.
- WP NICHIIHA ARCHITECTURAL WALL PANELS: ILLUMINATION SERIES. AWP-3030. COLOR PER COLOR TABLE THIS SHEET. * PANEL PATTERN SHALL BEGIN W/ FULL PANELS ABOVE/BELOW OPENING HEAD ELEVATION (9'-4").

ELEVATION KEYED NOTES - GROUP TWO NOTES:

THE FOLLOWING ELEVATION KEYED NOTES ARE ENCLOSED WITH A X SYMBOL ON THE ELEVATIONS.

- EXISTING UTILITY BRICK VENEER TO REMAIN.
- EXISTING DRIVE-THRU WINDOW TO REMAIN.
- EXISTING GAS SERVICE METER TO REMAIN.
- EXISTING HOSE BIBB TO REMAIN.
- EXISTING BULK OIL FILL BOX TO REMAIN.
- EXISTING CO2 FILL BOX TO REMAIN.
- EXISTING ELECTRICAL SERVICE METER/PANELS TO REMAIN.
- HIRAF LINEAR LED DOWNLIGHT LIGHT TO BE INSTALLED ALONG FRONT OF COPING. AVAILABLE FROM SECURITY LIGHTING. INSTALL PER MANUFACTURER'S SPECIFICATIONS. SEE ELECTRICAL SHEETS AND ROOF PLAN.
- ILLUMINATED McDONALD'S SIGNAGE: LED ILLUMINATED. SIGNS MUST BE CONTROLLED VIA PHOTOCELL OR A PROGRAMMABLE LIGHTING CONTROL PANEL PER WARRANTY REQUIREMENTS. CONTROLS BY E.C. COORDINATE WITH OWNER CONTROL TYPE: PHOTOCELL OR CONTROL PANEL. CURRENT SIGN MANUFACTURER FOR SIGNAGE PACKAGE IS: EVERBRITE (414-529-3500). UNDER SEPARATE PERMIT. FINAL SIGN PACKAGE TO BE APPROVED BY MUNICIPALITY.
- NEW STOREFRONT AND/OR GLAZING PER FLOOR PLAN. TEMPERED GLASS INDICATED WITH A "T".
- E.I.F.S. CONTROL JOINTS INSTALLED PER MANUFACTURERS REQUIREMENTS.
- EXISTING GUARD RAIL: PRIME & PAINT TO MATCH FIELD COLOR PER COLOR TABLE THIS SHEET.
- EXISTING DOOR AND FRAME: PRIME & PAINT TO MATCH FIELD COLOR PER COLOR TABLE THIS SHEET.
- EXISTING ROOF DRAIN PIPE: PRIME & PAINT TO MATCH FIELD COLOR PER COLOR TABLE THIS SHEET.
- PAINT ALL EXISTING COPING ON PLAYPLACE TO MATCH NEW EDGE FASCIA (KEYED NOTE MF)
- BOX TO COVER PIPE WALL PENETRATION PER DETAIL 6/A-502. COLOR: NATURAL ANODIZED ALUMINUM.



3 PARTIAL WEST/DRIVE-THRU ELEVATION
SCALE: 1/4" = 1'-0"

EXTERIOR ELEVATIONS
MAJOR REMODEL PROJECT
 MCDONALD'S RESTAURANT (SITE ID # 480505)
 801 MEADOWBROOK ROAD
 CITY OF WAUKESHA, WISCONSIN

REVISIONS		DESCRIPTION
NO.	DATE	

DATE: 1-15-18
 PROJ. NO: 1708145
 DRAWN BY: BW
 SHEET

A-202