



HVAC ♦ Plumbing ♦ Fire Protection ♦ Electrical ♦ Commissioning

Conditional Use Permit Submittal Exterior Lighting Products

**Waukesha City Hall
Waukesha, WI**

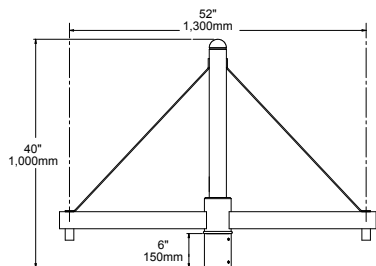
March 21, 2019

R&D Number: 218021.00

Universe® Collection Medium LED – UCM

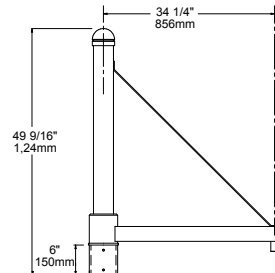
TYPE

SLA17-2 WT: 24 LBS EPA: 2.05



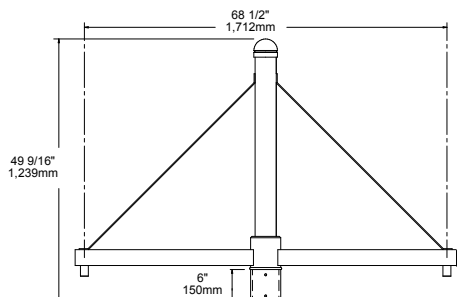
4" POLE

SLA17 (5) WT: 24 LBS EPA: 2.20



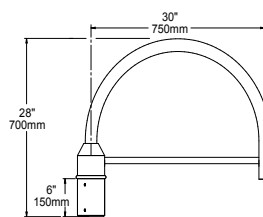
5" POLE

SLA17 (5)-2 WT: 33 LBS EPA: 2.90



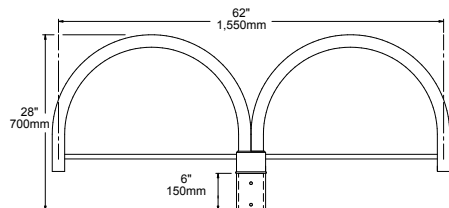
5" POLE

SLA18 WT: 12 LBS EPA: .85



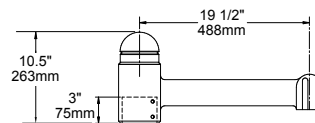
4" POLE

SLA18-2 WT: 22 LBS EPA: 1.59



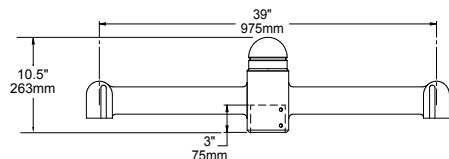
4" POLE

SLA20 WT: 10 LBS EPA: .70



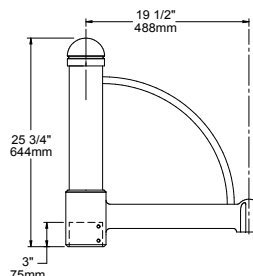
4" POLE

SLA20-2 WT: 18 LBS EPA: 1.25



4" POLE

SLA20A WT: 15 LBS EPA: 1.30



4" POLE



ARCHITECTURAL AREA LIGHTING
17760 Rowland Street | City of Industry | CA 91748
P 626.968.5666 | F 626.369.2695 | www.aal.net
Copyright © 2014 May 11, 2017

JOB	_____
TYPE	_____
NOTES	_____

Application

LED recessed wall luminaire with asymmetrical light distribution for the illumination of ground surfaces, building entrances, stairs and footpaths.

Materials

Luminaire housing constructed of die-cast aluminum marine grade, copper free (≤0.3% copper content) A360.0 aluminum alloy
Clear safety glass
Silicone applied robotically to casting, plasma treated for increased adhesion
High temperature silicone gasket
Mechanically captive stainless steel fasteners
Stainless steel screw clamps
Composite installation housing

NRTL listed to North American Standards, suitable for wet locations
Protection class IP65
Weight: 4.0 lbs

Electrical

Operating voltage	120-277V AC
Minimum start temperature	-30° C
LED module wattage	12.3 W
System wattage	15.0 W
Controlability	0-10V
Color rendering index	Ra > 80
Luminaire lumens	1,000 lumens (3000K)
Lifetime at Ta=15°C	230,000 h (L70)
Lifetime at Ta=35°C	80,000 h (L70)

LED color temperature

2700K - Product number + **K27**
3000K - Product number + **K3**
3500K - Product number + **K35**
4000K - Product number + **K4**

BEGA can supply you with suitable LED replacement modules for up to 20 years after the purchase of LED luminaires - see website for details

Finish

All BEGA standard finishes are matte, textured polyester powder coat with minimum 3 mil thickness.

Available colors	Black (BLK)	White (WHT)	RAL:
	Bronze (BRZ)	Silver (SLV)	CUS :

Type:

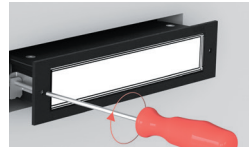
BEGA Product:

Project:

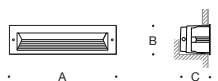
Modified:

WAUKESHA CITY HALL
CITY SUBMITTAL
LIGHTING FIXTURE SELECTIONS

TYPE: OL

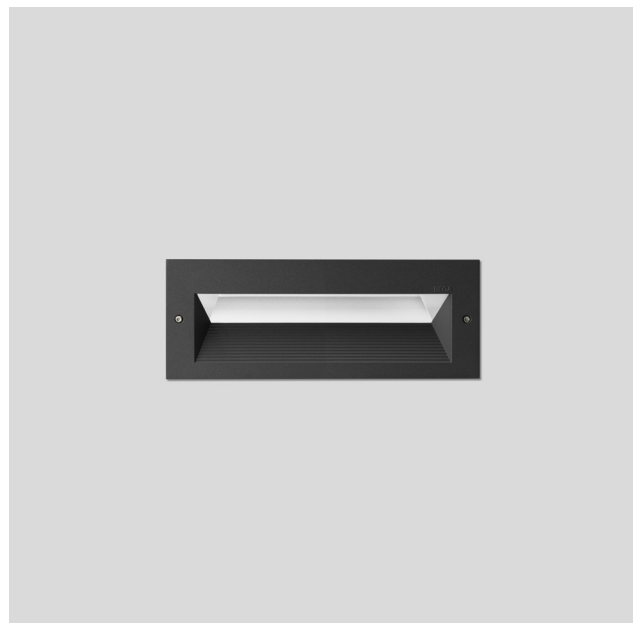


Fully enclosed luminaire with installation housing ensures seamless integration and weathertight operation.



LED recessed wall luminaires · asymmetrical

	LED	A	B	C
33058	12.3W	13	5	5 ½



Compact floodlight

Housing: Luminaire constructed of a one piece die-cast aluminum housing. LED module paired with inner reverse-tapered casting to provide maximum heat transfer to outer housing. Die castings are marine grade, copper free (\leq 0.3% copper content) A360.0 aluminum alloy.

Enclosure: Optical system consists of a reflector of pure anodized aluminum. The lens and optical assembly are secured by a die cast aluminum trim ring using (3) stainless steel captive fasteners.

Mounting: Provided with two piece die-cast aluminum canopy supplied with universal mounting bracket for direct attachment to 3½" or 4" octagonal wiring box. Die-cast aluminum swivel.

Electrical: 19.2 W LED luminaire, 22 total system watts, -40° C start temperature. Integral 120V or 277V electronic LED driver, 0-10V, TRIAC and ELV dimmable. The LED module and driver are mounted on a removable inner assembly for easy replacement. Standard LED color temperature is 4000K with a 90 CRI. Available in 3000K (90 CRI); add suffix K3 to order.

Note: Due to the dynamic nature of LED technology, LED luminaire data in this catalog is subject to change at the discretion of BEGA-US. For the most current technical data, please refer to www.bega-us.com.

Finish: All BEGA standard finishes are polyester powder coat with minimum 3 mil thickness. These luminaires are available in four standard BEGA colors: Black (BLK); White (WHT); Bronze (BRZ); Silver (SLV). To specify, add appropriate suffix to catalog number. Custom colors supplied on special order.

CSA certified to U.S. and Canadian standards for wet locations. Protection class IP65.

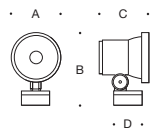
Weight: 5.1 lbs.

EPA (Effective projection area): 0.33 sq. ft.

Luminaire Lumens: 1851

WAUKESHA CITY HALL
CITY SUBMITTAL
LIGHTING FIXTURE SELECTIONS

TYPE: ON
SIGNAGE



Compact floodlight · narrow beam						Accessories			
Lamp		β	A	B	C	D			
77701	19.2W LED	30°	6¼"	87/8"	6½"	37/8"	70060	70796	70757
Exchangeable lenses		flat beam	Louver	180° glare shield	β = Beam angle				

BEGA 1000 BEGA Way, Carpinteria, CA 93013 (805) 684-0533 FAX (805) 566-9474 www.bega-us.com

©copyright BEGA 2019 Updated 03/13/2019

Compact floodlight

WAUKESHA CITY HALL
CITY SUBMITTAL
LIGHTING FIXTURE SELECTIONS

TYPE: OM
LANDSCAPE ACCENT

Housing: Luminaire constructed of a one piece die-cast aluminum housing. LED module paired with inner reverse-tapered casting to provide maximum heat transfer to outer housing. Die castings are marine grade, copper free ($\leq 0.3\%$ copper content) A360.0 aluminum alloy.

Enclosure: Optical system consists of a reflector of pure anodized aluminum. The lens and optical assembly are secured by a die cast aluminum trim ring using (3) stainless steel captive fasteners.

Mounting: Provided with two piece die-cast aluminum canopy supplied with universal mounting bracket for direct attachment to 3/2" or 4" octagonal wiring box. Die-cast aluminum swivel.

Electrical: 19.2W LED luminaire, 22 total system watts, -40° C start temperature. Integral 120V or 277V electronic LED driver, 0-10V, TRIAC and ELV dimmable. The LED module and driver are mounted on a removable inner assembly for easy replacement. Standard LED color temperature is 4000K with a 90 CRI. Available in 3000K (90 CRI); add suffix K3 to order.

Note: Due to the dynamic nature of LED technology, LED luminaire data in this catalog is subject to change at the discretion of BEGA-US. For the most current technical data, please refer to www.bega-us.com.

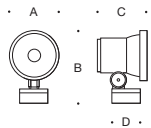
Finish: All BEGA standard finishes are polyester powder coat with minimum 3 mil thickness. These luminaires are available in four standard BEGA colors: Black (BLK); White (WHT); Bronze (BRZ); Silver (SLV). To specify, add appropriate suffix to catalog number. Custom colors supplied on special order.

CSA certified to U.S. and Canadian standards for wet locations. Protection class IP65.

Weight: 5 lbs.

EPA (Effective projection area): 0.33 sq. ft.

Luminaire Lumens: 1782



Compact floodlight · wide beam					Accessories	
Lamp	β	A	B	C	D	
77 702 19.2W LED	44°	6'1/4	8'7/8	6'1/2	3'7/8	70060 70757

Exchangeable lenses flat beam 180° glare shield β = Beam angle

BEGA 1000 BEGA Way, Carpinteria, CA 93013 (805) 684-0533 FAX (805) 566-9474 www.bega-us.com

©copyright BEGA 2019 Updated 03/13/2019

Compact floodlight

Housing: Luminaire constructed of a one piece die-cast aluminum housing. LED module paired with inner reverse-tapered casting to provide maximum heat transfer to outer housing. Die castings are marine grade, copper free ($\leq 0.3\%$ copper content) A360.0 aluminum alloy.

Enclosure: Optical system consists of a reflector of pure anodized aluminum. The lens and optical assembly are secured by a die cast aluminum trim ring using (3) stainless steel captive fasteners.

Mounting: Provided with two piece die-cast aluminum canopy supplied with universal mounting bracket for direct attachment to 3½" or 4" octagonal wiring box. Die-cast aluminum swivel.

Electrical: 48.2W LED luminaire, 51 total system watts, -20°C start temperature. Integral 120V through 277V electronic LED driver, 0-10V dimming. LED module(s) are available from factory for easy replacement. Standard LED color temperature is 4000K with a >90 CRI. Available in 3000K (>90 CRI); add suffix K3 to order.

Note: LEDs supplied with luminaire. Due to the dynamic nature of LED technology, LED luminaire data in this catalog is subject to change at the discretion of BEGA-US. For the most current technical data, please refer to www.bega-us.com.

Finish: All BEGA standard finishes are polyester powder coat with minimum 3 mil thickness. These luminaires are available in four standard BEGA colors: Black (BLK); White (WHT); Bronze (BRZ); Silver (SLV). To specify, add appropriate suffix to catalog number. Custom colors supplied on special order.

CSA certified to U.S. and Canadian standards for wet locations. Protection class IP65.

Weight: 9.7 lbs.

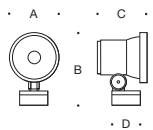
EPA (Effective projection area): 0.54 sq. ft.

Luminaire Lumens: 1723

Tested in accordance with LM-79-08

**WAUKESHA CITY HALL
CITY SUBMITTAL
LIGHTING FIXTURE SELECTIONS**

**TYPE: OP
FLAGPOLE**



Compact floodlight · wide beam					Accessories	
Lamp	β	A	B	C	D	
77 689 48.2W LED	50°	9 1/8	12	8 5/8	5 1/8	70065 70758

Exchangeable lenses  flat beam  180° glare shield β = Beam angle

BEGA 1000 BEGA Way, Carpinteria, CA 93013 (805) 684-0533 FAX (805) 566-9474 www.bega-us.com

©copyright BEGA 2017 Updated 01/19

WAUKESHA CITY HALL
CITY SUBMITTAL
LIGHTING FIXTURE SELECTIONS

Pursuit™ – Direct (Down)

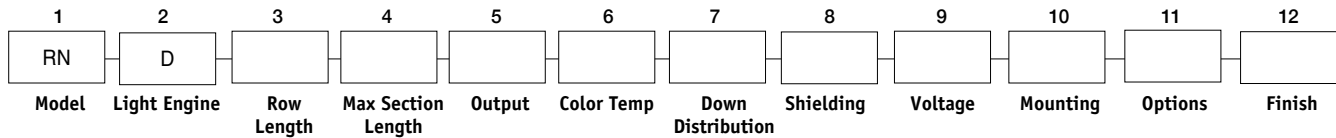
FEATURES

- 2', 3', 4', 6' & 8' housing lengths
- Sections can be joined for runs up to 150' with seamless lens
- IP66 Rated
- Light engine is independently rated IP67
- Electrical connections IP68 rated
- Symmetric, asymmetric & wall graze & wall wash distributions

- TYPE: OD
- wireless control
- Output up to 1,500 lm/ft
- Surface, fixed arm, adjustable arm, pendant, mullion & wall mounting options



ORDERING CODE



1. MODEL

RN Pursuit

2. LIGHT ENGINE

D Direct (Down)

3. ROW LENGTH

Manual input (150' Max length. round up to nearest whole foot)

4. MAXIMUM FIXTURE SECTION LENGTH

- 2 2' Fixture
- 3 3' Fixture
- 4 4' Fixture
- 6 6' Fixture
- 8 8' Fixture

5. OUTPUT

- 5 500 lumens/ft
- 7 750 lumens/ft
- 10 1000 lumens/ft
- 15 1500 lumens/ft

6. COLOR TEMPERATURE

- 3K8 3000K, 80 CRI
- 3K9 3000K, 90 CRI
- 4K8 4000K, 80 CRI
- 4K9 4000K, 90 CRI
- 5K8 5000K, 80 CRI

Consult factory for additional CCT options.

7. DISTRIBUTIONS

- SM Symmetrical
- AS Asymmetrical
- WG Wall graze
- WW Wall wash

8. SHIELDING

- DL Diffuse lens
- CL Clear lens

9. VOLTAGE

- UNV 120-277V
- 347 347V
- 480 480V

10. MOUNTING

- W Wall
- A3 3" Adjustable arm
- A6 6" Adjustable arm
- A12 12" Adjustable arm
- F3 3" Fixed arm
- F6 6" Fixed arm
- F12 12" Fixed arm
- M Mullion
- S Surface
- PSW12 12" Pendant
- PSW24 24" Pendant
- PSW36 36" Pendant

11. OPTIONS

- EMF1 End Power Feed at one end
- EMF2 End Power Feed at both ends

Photocell Options

- PC Button photocell ⁽¹⁾

Control Options - Not available with PC ⁽¹⁾

- SCP Dimming Occupancy Sensor
- SWP SiteSync Wireless
- SWPM SiteSync Wireless with SCP
- NXWE NX Wireless Enabled
- NXOSW NX Wireless, PIR Occupancy Sensor, Dimming Daylight Harvesting

Emergency Battery Option

- EM Battery Backup Unit (-20°C) ⁽²⁾

12. FIXTURE FINISH

Standard Color

- BL Black
- BLT Matte Black
- DB Dark Bronze
- GT Graphite
- MG Medium Grey
- TT Titanium
- WH White
- CUSTOM Custom Color

Note:

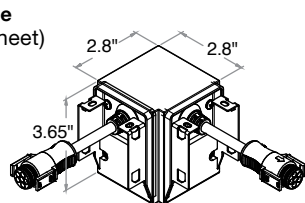
- ⁽¹⁾ Requires auxiliary housing. Fixture length will increase.
- ⁽²⁾ Integral battery backup for 3, 4, 6 and 8 foot versions only. Not available on 2' housing.

ACCESSORIES

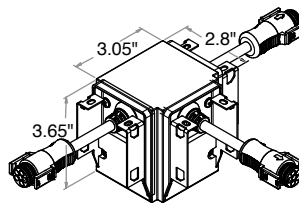
Non Illuminated Connectors - Enable Custom Shapes (see separate spec sheet)

ORDERING PREFIX

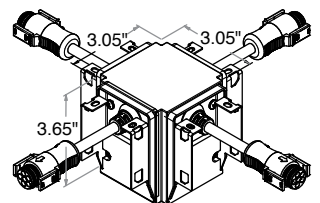
- RNLTX-L-D L shape
- RNLTX-T-D T shape
- RNLTX-X-D X shape



L Shape



T Shape



X Shape



ARCHITECTURAL AREA LIGHTING
17760 Rowland Street | City of Industry | CA 91748
P 626.968.5666 | F 626.369.2695 | www.aal.net
Copyright © 2018 October 10, 2018 9:41 AM

JOB _____
TYPE _____
NOTES _____



**WAUKESHA CITY HALL
CITY SUBMITTAL
LIGHTING FIXTURE SELECTIONS**

**TYPE: OF
LOADING DOCK**

JOB _____ TYPE _____

NOTES _____ APPROVALS _____

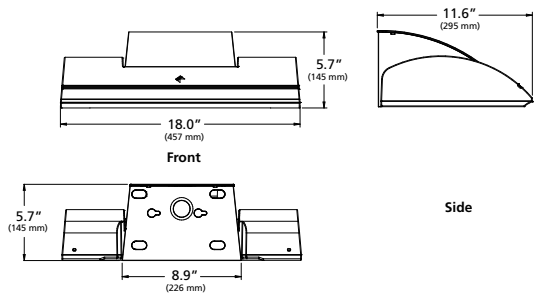
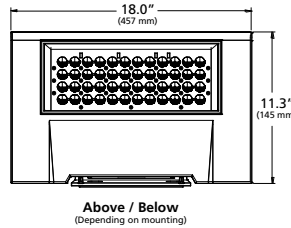
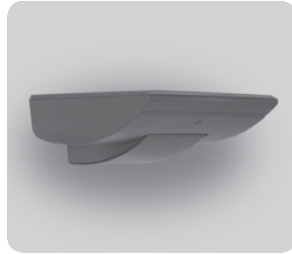
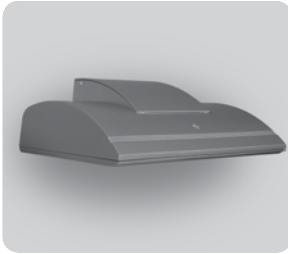
FEATURES

- -5° to +10° tilt adjustment
- High performance optics deliver up to 15,000 lumens
- up or down mountable without modification
- Diffused lens option
- Programmable occupancy sensor (dimming)
- NX and SiteSync wireless controls
- 130+ lumens per watt

Certifications



SPECIFICATIONS



Weight: 35 lbs

ORDERING CODE

<input type="text"/>	<input type="text"/>	<input type="text"/>	<input type="text"/>	<input type="text"/>	<input type="text"/>	<input type="text"/>	<input type="text"/>	<input type="text"/>
Fixture	Mounting	Source	Wattage	Light Engine	Distribution	Voltage	Fixture Finish	
WDM Wall Director Medium	D Down U Up	48L 48 LEDs	55 55 Watts 65 65 Watts 85 85 Watts 105 105 Watts 130 130 Watts	3K7 3000K/70CRI 3K8 3000K/80CRI 4K7 4000K/70CRI 4K8 4000K/80CRI 5K7 5000K/70CRI	1 Type I 2 Type II 3 Type III 4W Type IV Wide 4F Type IV Forward WG ² Wall Graze SP Spot/Column FTD ² Forward Throw Diffuse WTD ² Wide Throw Diffuse	UNV 120-277V 347 347V 480 480V	BL Black DB Dark Bronze GT Graphite LG Light Gray PS Platinum Silver TT Titanium WH White CC Custom Color, consult representative	
Control Options			Options		Accessories			
PC Button Photocell SCP-8F Programmable Occ. Sensor (<9' height) SCP-20F Programmable Occ. Sensor (<9' - 20' height) SWP ³ SiteSync Wireless Pre-Commission SWPM ³ SiteSync Wireless w/ Occupancy Sensor Pre-Commission NXSPW14F ⁴ NX Wireless, PIR Occupancy Sensor, Dimming Daylight Harvesting, 14' NXSP14F ⁴ NX PIR Occupancy Sensor, Dimming Daylight Harvesting, 14' NXWE ⁴ NX Wireless Enabled			EM ³ Internal Emergency Battery Backup SF Single Fuse & Fuse holder DF Double Fuse & Fuse holder 2DR Dual Drivers 2PF Dual Power Feeds		SCPREMOTE SCP configuration tool SWUSB SiteSync Software on USB SWTAB SiteSync Windows® Tablet SWBRG SiteSync Software Bridge Node			

Microsoft, Encarta, MSN, and Windows are either registered trademarks or trademarks of Microsoft Corporation in the United States and/or other countries.



Kim Lighting reserves the right to change specifications without notice.



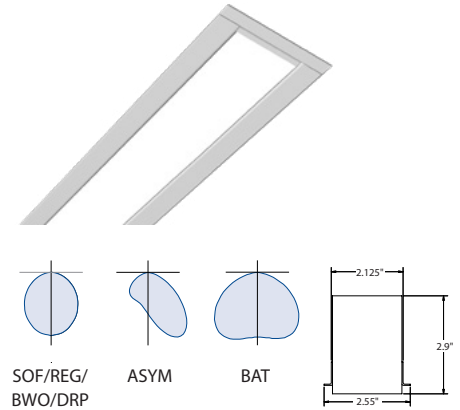
¹ Not available with EM option or with SCP & SWPM sensor options.
² WG, FTD, and WTD come with a diffused lens.
³ Universal voltage only (120-277), not available with PC option.
⁴ 120-347V only

MOD™ 2 LED Recessed Direct

WAUKESHA CITY HALL
CITY SUBMITTAL
LIGHTING FIXTURE SELECTIONS

TYPE: OB

Feature	Code	Options	Description
Series		2L	MOD
Ceiling Type*		DW PT LG NG SS	Drywall Drywall with plaster trim (trimless finish) 15/16 Grid 9/16 Grid 9/16 Screw Slot & 9/16 Tegular *Ceiling Type cannot be retrofitted in the field
Fixture distribution		D AD	Direct Asymmetric Direct
Row length (in feet)		----	Enter in foot increments. Note fixture lengths below.
Row length adder (in inches)		.3 .6 .9	Row length +3" Row length +6" Row length +9"
Max length in row		02 03 04 05 06 08	2', 609mm 3', 914mm 4', 1219mm 5', 1524mm 6', 1829mm 8', 2438mm
Downlight diffuser		SOF REG BWO ASYM BAT DRP	Soft Diffuse Lens Regressed Diffuse Lens* Blade Baffle with Overlay* Asymmetric Diffuser Lens*/** Batwing Lens Drop Lens* *Not Available with Patterns **Must be ordered with AD
Finish/Color		C1 C2 C3 C4 C5 C6 CC	Matte White (Default) Textured Matte White Light Silver Machined Aluminum Carbon Black Textured Camera Black Custom Color
Color temperature		27K 30K 35K 40K 50K 27K9 30K9 35K9 40K9 50K9 2230TD 2750T 2765T	2700K+ 3000K 3500K 4000K 5000K+ 2700K, 90 CRI+ 3000K, 90 CRI 3500K, 90 CRI 4000K, 90 CRI 5000K, 90 CRI+ 2200K-3000K SpectraSync™ Dim-to-Warm* 2700K-5000K SpectraSync™ Tunable White* 2700K-6500K SpectraSync™ Tunable White* *Must be ordered with D05 or DS5 Driver options; excludes 2' lengths and patterns
Direct output/ft (specifiable in 50 lumens/ft increments)		D030 D085	300 850



Key Features

- Variable Intensity technology provides specifiable lumen output/wattage
- End cap design eliminates visible diffuser seams/gaps
- 2 SDCM color variation

Performance

Nomenclature	Lumens/ft	W/ft	Efficacy
D030 (min)	300	2.9	102
D050	500	5.2	96
D085 (max)	850	8.6	99

(wattage may vary up to 5% from published)

+ Additional lead time may be applicable. Contact factory.



Quick Find litecontrol.com

2L-R-D

**WAUKESHA CITY HALL
CITY SUBMITTAL
LIGHTING FIXTURE SELECTIONS**

TYPE: OA

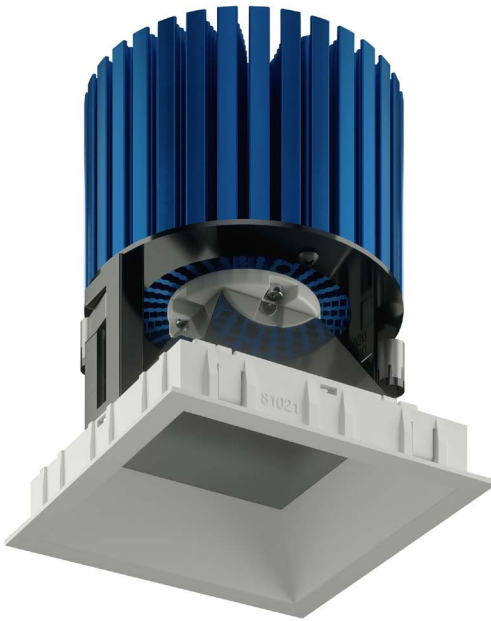
NU4"

**Square Downlight
Xicato**

XICATO



eldoLED
your product | our drive



DESCRIPTION

The NU4QD 4" recessed downlight by ALPHABET offers multiple cutting edge LED technologies, premium performance, thoughtful construction and pleasing aesthetics. Offered standard with premium dimming using EldoLED 1% flicker free drivers in 120V, 277V, and 347V. A minimalistic look is achieved with an ultrathin 1/16" trim that is only 5/16" wide. Color choices of both trim and bezel are offered for a customized look. Several beam angles available, plus an optional high-efficiency BrightView diffused lens for smooth light distribution and obscured LED image.

HOUSING

Electrocoated 16-gauge cold-rolled steel provides enhanced structural reinforcement and rust prevention. Superior, flame-retardant, UL-certified, injection-molded commercial-grade Lexan™ (PC) is used for the frame and regressed bezel trim. Lexan provides unmatched durability and impact resistance, 270°F heat deflection temperature, and is tested for UV resistance and water exposure in outdoor applications. The thermally-advanced, anodized heat sink uses 6063 aluminum alloy. Wet location rated is offered standard. A 90-minute constant-power IOTA emergency battery backup is available.

MOUNTING

An advanced mounting system allows for quick and secure installation with LED and driver serviceability from below the ceiling. The LED assembly uses die-cast aluminum mounting clamp grips (MCG) that swing out to tighten onto variable ceiling thicknesses ranging from 1/8" to 1-5/8". Integrated rubber feet on each MCG provide a non-slip vibration-resistant installation. The hidden MCG system is accessible from below ceiling by removing the snap-in lens/bezel assembly with either the included suction cup or a screwdriver blade. Integrated bar hangers feature integral toothed nails, T-bar mounting slots with locking holes, tabs for joist positioning, and extendibility from 14-3/4" to 26". Retrofit mounting option allows for installation from below ceiling by use of compact driver box. Ceiling cutout size is 4-1/4" square.

LISTINGS

- ETLus Listed to UL1598, cETL Listed to CSA C22.2 #250.0
- Type Non-IC, IC, CP, Airtight ASTM Standard E283
- Suitable for wet locations, IP65
- Non-conductive, Lexan dead-front construction
- Made in the USA – meets the requirements of the Buy American provision within the ARRA

LED INFO

- SDCM = 1X2 MacAdam Ellipse, Duv +/- 0.001

ORDERING CODE

SERIES	NU4	
TYPE	QD	square downlight
LED	XTM19	XTM19
DELIVERED LUMENS	07LM 10LM 13LM 20LM 30LM ⁵ 40LM ^{1,3}	600 lm 860 lm 1120 lm 1720 lm 2570 lm 3430 lm
CCT	27K B27K ² 30K V30K 35K 40K	2700K 2700K beauty 3000K 3000K vibrant 3500K 4000K
CRI	83 98 ¹	83CRI 98CRI
REFLECTOR & LM MULTIPLIER	HE60 HE70 HE80 S60 D65 WH80	60° high efficiency diffused lens (0.97) 70° high efficiency diffused lens (0.94) 80° high efficiency diffused lens (0.98) 60° specular with clear lens (1.00) 65° diffused with clear lens (0.98) 80° brilliant white with clear lens (0.99)
NO LENS OPTION	NL ⁵	no lens
VOLTAGE	120 277	120V 277V See Electrical Options for 347V.
DIMMING	DIM10 ⁶ DIM10Z ⁶ DALI ⁶ DALIZ ⁶ DMXZ LTE ⁹ LUT ⁹ LUTP ¹⁰ ELV ⁷	standard driver with flicker free 0-10V dimming to 1% flicker free 0-10V dimming to 0% flicker free DALI dimming to 1% flicker free DALI dimming to 0% flicker free DMX dimming to 0% Lutron Hi-lume 2-Wire (Triac) dimming to 1% Lutron Hi-lume EcoSystem dimming to 1%, Soft-on & Fade-to-Black Lutron Hi-lume Premier EcoSystem dimming to 0.1%, Soft-on & Fade-to-Black leading & trailing edge dimming (Triac/ELV)
MOUNTING OPTIONS	NC IC ³ ICAT ³ CP ³ RET	new construction with ceiling fitting plate insulation contact housing insulation contact / airtight housing chicago plenum housing retrofit, no ceiling fitting plate
TRIM COLOR	WH MC BK BZ WT	white matte chrome black bronze wheat
BEZEL COLOR	WH MC BK BZ WT	white matte chrome black bronze wheat
ELECTRICAL OPTIONS	EM7 ⁸ EM12 ^{4,8} FOR 347V OPTION	emergency battery backup, 90 minutes at 7 watts to LED emergency battery backup, 90 minutes at 12 watts to LED order separate "347V to 277V" step down transformer p/n: P70489

ORDERING CODE

Follow the steps to specify your fixture, example:

NU4 - QD - XTM19 - 13LM - 35K - 98 - HE60 - 120 - DIM10 - NC - WH - WH - EM7

XTM19	POWER	
	DELIVERED LM	W (83CRI)
600	10	11
860	12	15
1120	17	21
1720	26	33
2570	37	43
3430	49	N/A

Power Factor ≥ 0.9

NOTES

- 1 98 CRI not available for 40LM.
- 2 B27K Beauty Series choose 98 CRI (actual 93). Available for 07LM, 10LM, 13LM, and 20LM only.
- 3 IC/ICAT/CP not available for 98CRI in 30LM or 83/98CRI in 40LM.
- 4 EM12 not available for 83CRI in 07LM, 10LM or 13LM.
- 5 No lens option available for S60, D65, or WH80 and is damp location rated.
- 6 Driver uses logarithmic dimming curve as standard. For linear dimming curve add "LIN" after dimming code, i.e. DIM10LIN.
- 7 Triac/ELV dimming available for 83/98cri in 10LM, 13LM, 20LM, & 83cri only in 30LM. Dimmable to < 10% in 10LM, 13LM. Dimmable to < 1% in 20LM, 30LM.
- 8 For integrated test switch add "ITS" after emergency backup code, i.e. EM12ITS. Test switch is mounted in the bezel of the fixture.
- 9 LTE/LUT not available in 40LM.
- 10 LUTP not available in 20LM, 30LM, or 40LM.