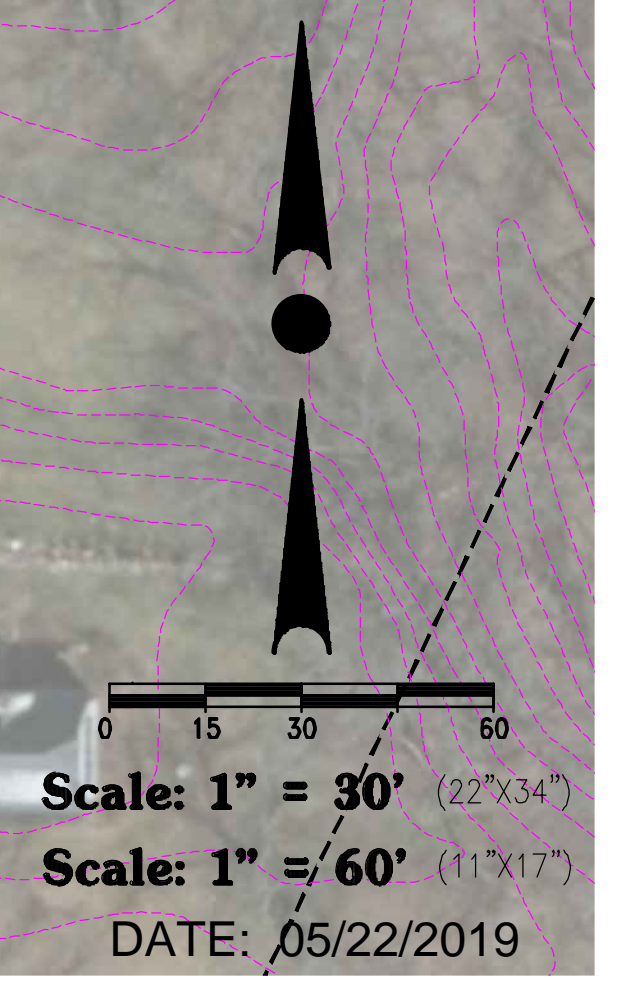


DEVELOPMENT SUMMARY	
Total Area:	4.03 acres (excluding ROW) + 0.50 acres (Koenig St ROW) 4.53 acres (Including ROW)
Proposed Zoning:	Rm-2
Zoning Standards:	Density: 1-bed: 14.5 un/ac; 2-bed: 12.4 un/ac
Setbacks:	Side: 15' Rear: 45' Street: 25'
Proposed Development:	Multi-Family
Proposed Units:	(3) 4-unit Bldgs (2) 6-unit Bldgs 5.95 units/acre
Density:	
Parking Provided:	Garage: 48 spaces Surface: 55 spaces TOTAL: 103 spaces
Parking Spaces per Unit:	4.29 spaces/unit



12660 W. NORTH AVE., BLDG D  
BROOKFIELD, WI 53005  
PHONE: (262) 790-1480  
FAX: (262) 790-1481  
EMAIL: jpuedelko@trioeng.com

P:\c3003\966\101006 - Icedonia concept plans\Icedonia\_sona\_townhomes\_site\_plan\_2019-05-20.dwg