



**STRUCTURES
UNLIMITED_{LLC}**

“Your Fabric Building Specialists”



Structures Unlimited, LLC

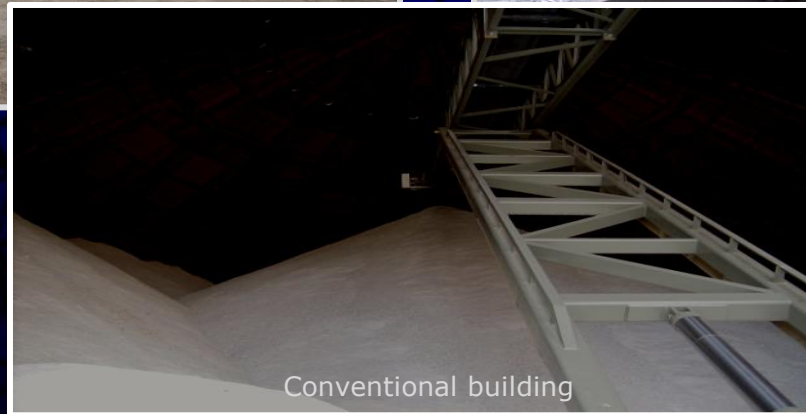
118280 Forward St. | P.O. Box 35 | Stratford, WI 54484

Toll Free: 877-687-2453 | Phone: 715-687-2453 | Fax: 715-687-2331

www.structuresunlim.com



Natural Light



Conventional building



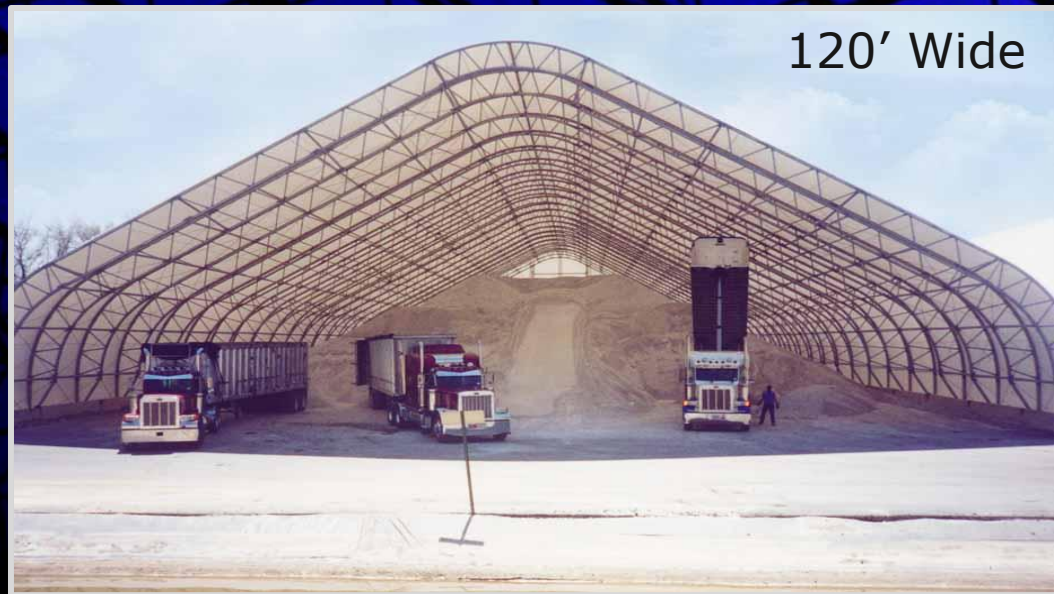


✓ Cover your salt to prevent ground and surface water contamination.

✓ Take advantage of bulk savings with our clear-span area and high ceilings.

✓ Prevent material loss and clumping from precipitation by keeping your road salt covered and dry.

✓ Your Structures Unlimited building may be classified as temporary, meaning you'll pay fewer taxes.





- Design Build
- Foundation Designs
- Construction Meetings
- General Contracting
- CAD Drawings
- State Submittals
- Scheduled Maintenance



150' Wide



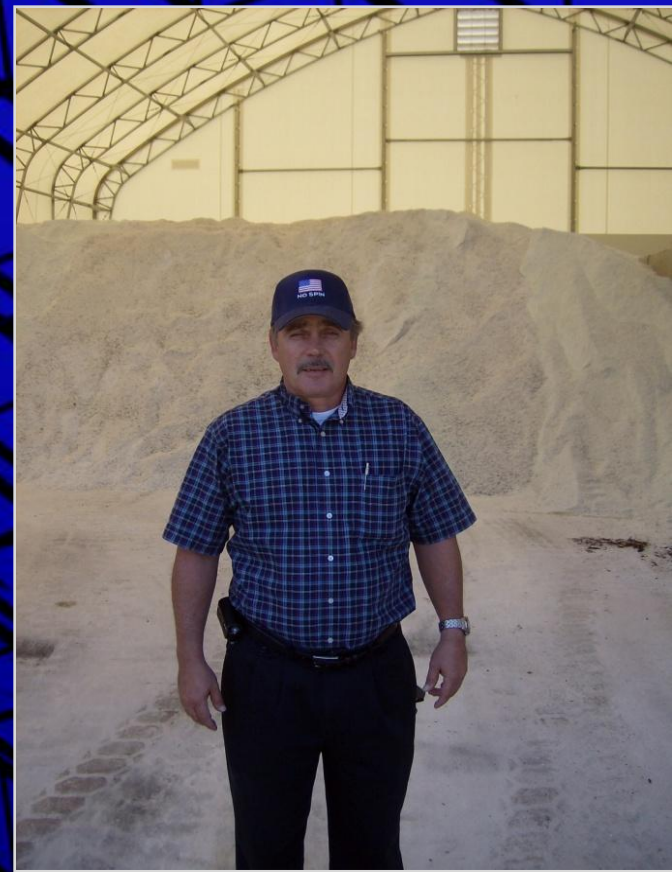
40' Wide



80' Wide

Quotes from Tim Jacobson...

- The building is fool-proof because of the concrete design, high doors, and sidewall clearances.
- It is also very cost effective. Minimal lighting is needed at night.
- Our taxpayers saved \$15,000 over the next lowest alternative structure.
- The crew was great! The whole project was smooth and we never had to look back. We are very pleased.



Tim Jacobson
Director of Public Works
City of Menasha
70' wide x 81' long



40' wide x 64' long



72' wide x 84' long

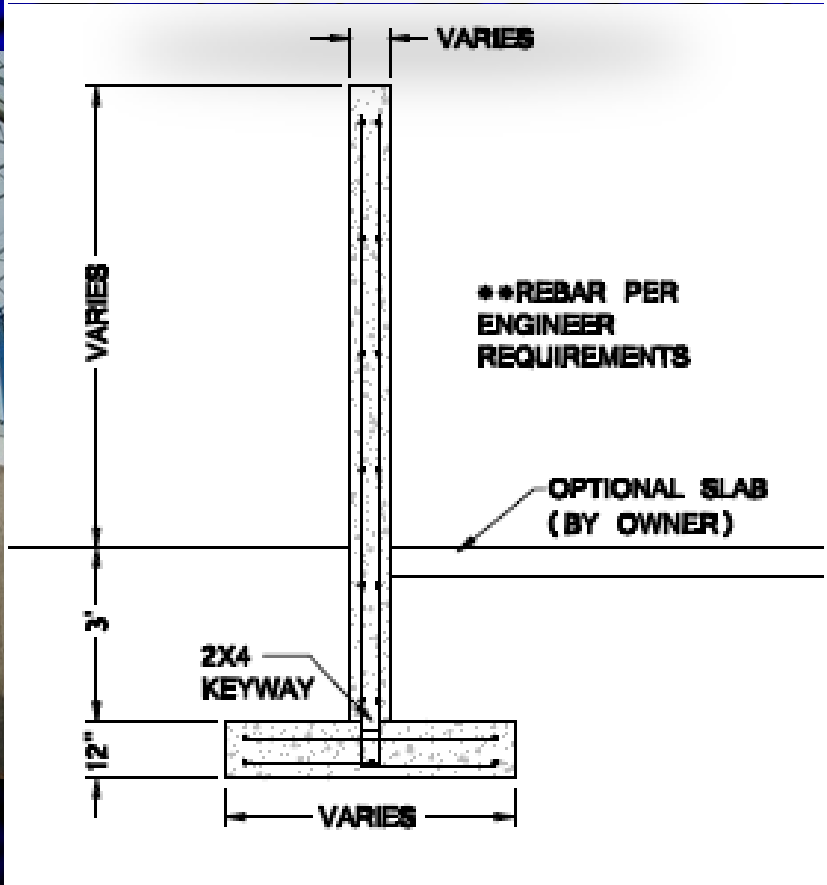
STRUCTURES
UNLIMITED_{LLC}



Sound Familiar....

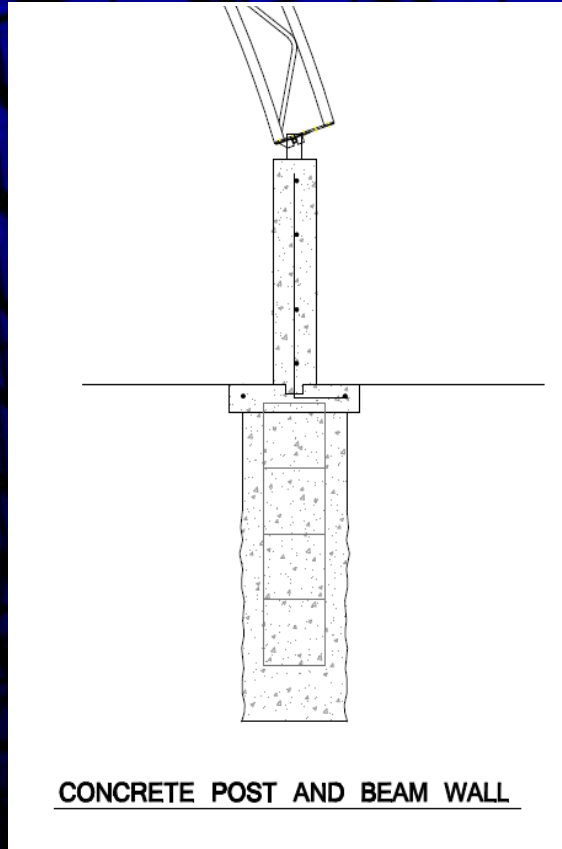
Salt continues to clump up in our wood building and I'm the guy that's out there at 2:00 am while the wind is blowing sideways, poking clumps out of my auger with a stick. Salt doesn't clump up in your building. Now we take salt out of our wood building and store it in the Structures Unlimited so it dries out.



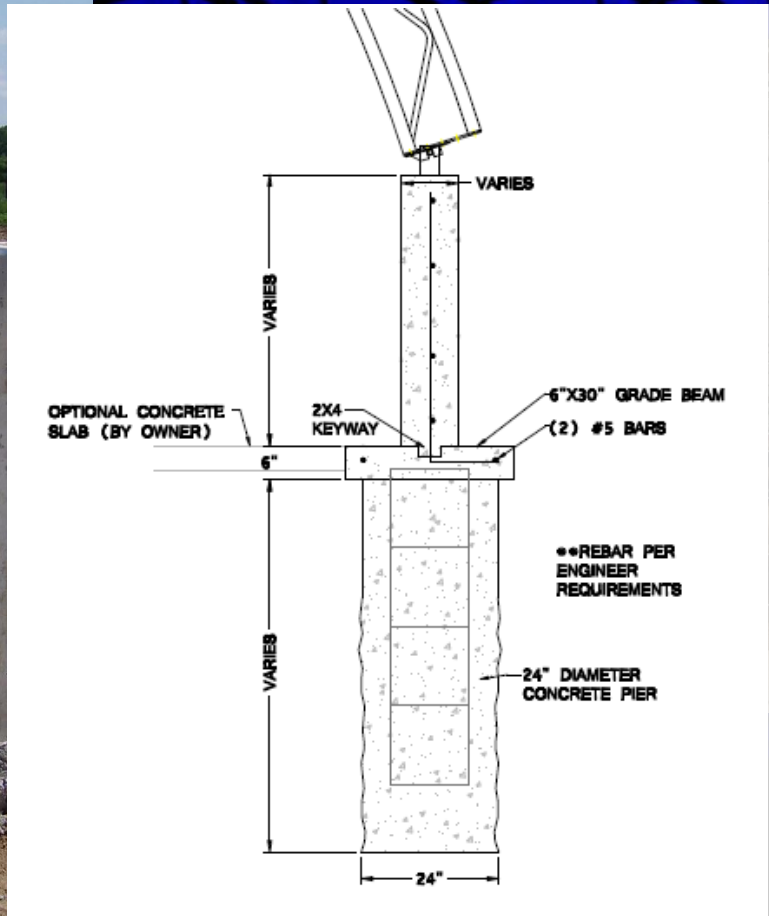




Foundation Option- Concrete Post and Beam

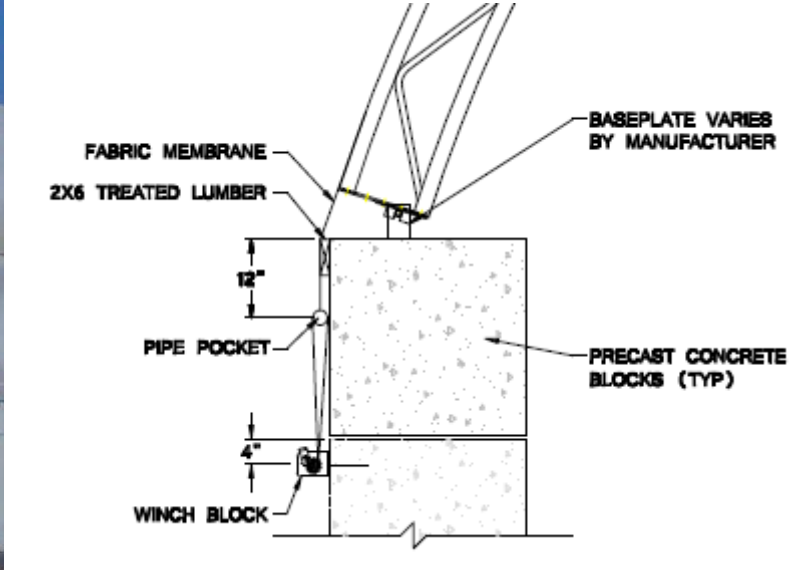


STRUCTURES UNLIMITED LLC



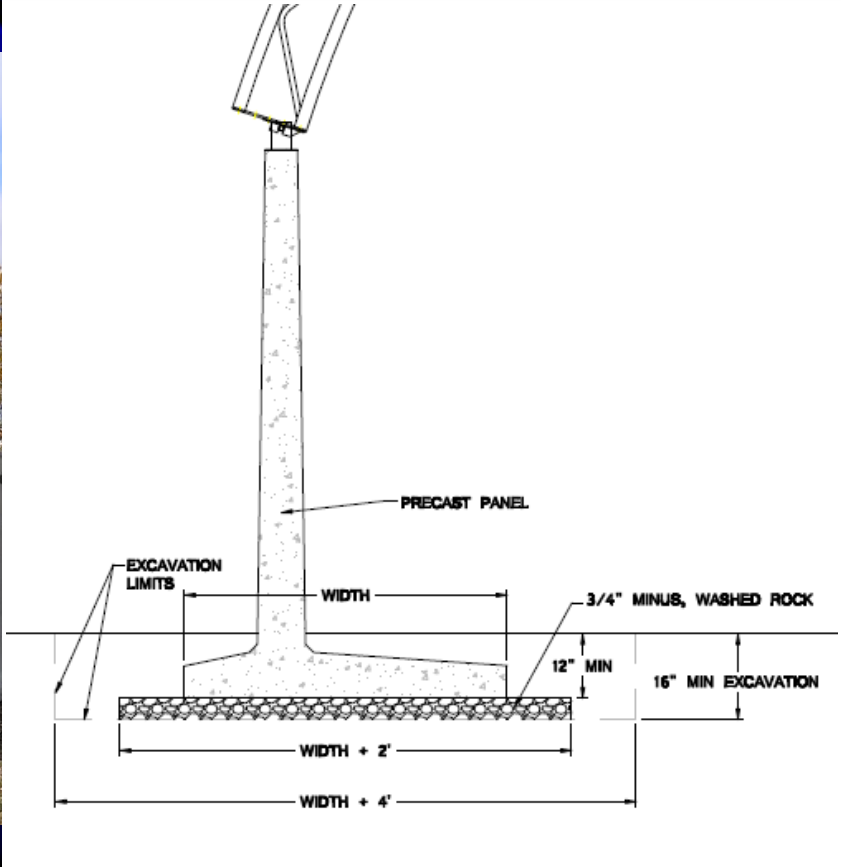
STRUCTURES UNLIMITED LLC

STRUCTURES UNLIMITED LLC



STRUCTURES UNLIMITED LLC

STRUCTURES UNLIMITED LLC



STRUCTURES UNLIMITED LLC



Will the natural light entering the building add heat to the inside space?

Answer: There will always be a slight heat gain in any enclosed structure, but the reflective quality of DuraWeave™ fabric is tremendously advantageous against solar heat gain compared to that of a steel clad building.





A steel clad building will absorb & radiate **5 times** more heat and "cut out" the natural light that we get in a fabric structure. We thus have a cooler – brighter interior!





Heat Transfer

DuraWeave™ has very low conductivity!
Light comes "in" but no ultra violet and
very little radiated heat.

Heat remains in longer in the winter due
to low radiation to the outside!

Little cold radiates in for the same
reason!

Thus **COOLER** in the summer and
WARMER in the winter!

PROJECT MANAGEMENT

- Our Project Management has many years of combined experience in the design, manufacturing, and construction of Tension Fabric Structures.
- Project Supervisors are assigned to each client to ensure all aspects of the project run smoothly and there is a constant line of communication within the team.
- Majority of our on-site installation personnel are long term Structures Unlimited employees.
- Project Managers are directly responsible for completing your facility on time and most importantly on budget – detailed timelines for design, production and installation sequence are provided to client.
- Prior to Structures Unlimited closing out a project, our entire, procurement, production, project management and site supervision team performs an in-depth review of the project to ensure that we have exceeded the client's expectations.
- Each project is thoroughly inspected by our Project Managers and owner's representatives to ensure 100% completion and full acceptance of the finished product.

BENEFITS VS. OTHER FABRIC STRUCTURES

- Widest product range in industry to provide customer-specific solutions and best overall value.
- Retractable sidewalls provide feel of being outdoors and add additional ventilation.
- ISO Quality and Management certification assures you of your investment.
- On time delivery, construction and installation service – on budget.
- Project Management services provide unparalleled, timely service

BENEFITS VS. OTHER CONSTRUCTION

- 100% re-locatable for leased land applications; modular to meet changing needs.
- Virtually maintenance free with excellent resale value.
- Translucent membranes allow natural light and reduce electrical costs.
- Building designs, graphics, colors, and facades to meet your exact needs.
- Bright, airy, and open environment provides year round comfort and versatility.
- Limited footing or foundation requirements – in some cases, none at all!
- 24/7/365 usage guarantees increase productivity, revenues, and versatility.
- Accelerated depreciation (Personal vs. Real Property) and lower insurance costs.

HOW STRONG IS OUR FABRIC?



IT'S THAT STRONG.





Make Structures
Unlimited your building
of choice.



Contact Us:

Toll Free: (877) 687-2453

Email:
sales@structuresunlim.com

Website:
www.structuresunlim.com

