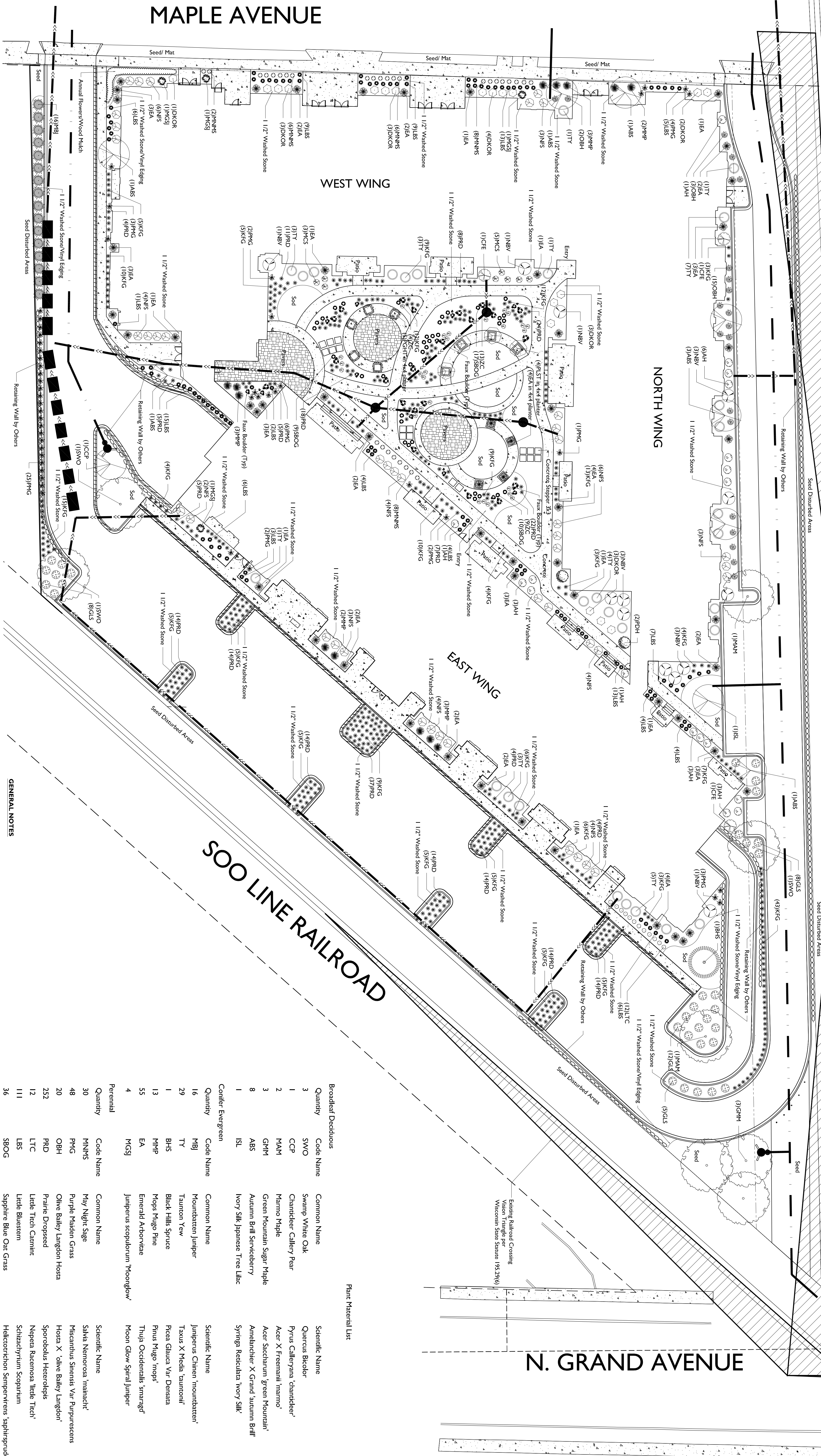


C&NW RAILROAD

Existing Railroad Crossing
Vision Triangle per
Wisconsin State Statute 193.29(6)

Existing Railroad Crossing
Vision Triangle per
Wisconsin State Statute 193.29(6)



N. GRAND AVENUE

SOO LINE RAILROAD

MAPLE AVENUE

WEST WING

NORTH WING

EAST WING

GENERAL NOTES

A) Areas labeled "Red B Colored Wood Mulch" to receive a mixture of recycled wood mulch, colored brown, spread to a 3" depth over pre-emergent herbicide.

B) Individual trees (and shrub groupings) found along perimeter of property as well as those found within lawn areas to receive wood mulch rings (and wood mulch beds) consisting of a mixture of recycled wood mulch, colored brown, spread to a minimum 3" depth (3" wide beds for shrub groupings).

C) "Viny Edging" to be Valley View Black Diamond Viny Edging or equivalent.

D) Areas labeled "washed stone" to receive 1-1/2" washed stone spread to a 3" depth over 40lb weed barrier.

E) "Seed" areas shall be finish-graded and seeded at a rate of 4 lbs. per 1,000 sq. ft.

F) Seed shall consist of the following mixture:
10% Pioneer IV Perennial Ryegrass
20% Oregon Kentucky Bluegrass
20% Pox II Perennial Ryegrass
15% Vol II Perennial Ryegrass
15% Gintey Kentucky Bluegrass

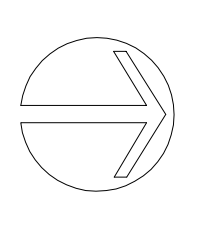
G) Areas labeled "Seed Mat" shall be seeded with the above-noted premium lawn seed mixture and overlaid with D575 straw erosion control matting that is then pegged into the soil with metal staples.

H) Areas labeled "Sod" shall receive only No. 1 grade nursery-grown bluegrass sod.

I) Plant beds adjacent to building foundation to be mulched with 1-1/2" diameter washed stone mulch spread to a 3" depth over fabric weed barrier.

Plant Material List

Quantity	Code Name	Common Name	Scientific Name	Planting Size
16	MJL	Mountain Juniper	Juniperus chinensis 'mountain'	5' B&B
29	TY	Taxus Yew	Taxus X Media 'tauntoni'	18" B&B
1	BHS	Black Hills Spruce	Picea Glauca Var. Distensa	5' B&B
13	MHP	Mopis Mugo Pine	Pinus Mugo 'mopis'	#3 CONT.
55	EA	Eternal Arborvitae	Thuja Occidentalis 'samaragd'	4' B&B
4	MGSJ	Jumpers scopulorum 'Meonglow'	Meon Glow Spiral Juniper	4' B&B
30	MNKS	May Night Sage	Salvia nemorosa 'mainacht'	#1 CONT.
48	PHG	Purple Maiden Grass	Miscanthus sinensis Var. Purpureus	#1 CONT.
20	OBH	Oliver Bailey Langdon Hosta	Hosta X Olive Bailey Langdon	#1 CONT.
22	PRD	Prarie Dropseed	Sporobolus heterolepis	#1 CONT.
12	LTC	Little Torch Canna	Nepeta racemosa 'little torch'	#1 CONT.
111	LBS	Little Bluestem	Schizachyrium scoparium	#1 CONT.
36	SBOG	Sapphire Blue Out Grass	Helictotrichon sempervirens 'sapphireblue'	#1 CONT.
26	ZC	Zagreb Coreopsis	Coreopsis verticillata 'zagreb'	#1 CONT.
233	KFG	Karl Foerster's Feather Reed Grass	Chamaegrass acutiflora 'karl foerster'	#1 CONT.
4	PLST	Pallidus Lilac (std)	Syringa 'meyerii pallidus' (std)	Planting Size 1 3/4" B&B
3	CFE	Chicago Fire Winged Euonymus	Euonymus alatus 'timber creek'	3' B&B
2	PDH	Pink Diamond Hydrangea	Hydrangea paniculata 'pink diamond'	#5 CONT.
8	MCS	Magic Carpet Spirea	Spiraea japonica 'wallisana'	#3 CONT.
18	AH	Amabelle Hydrangea	Hydrangea arborescens 'amabelle'	#3 CONT.
43	NFS	Neon Fish Spirea	Spiraea japonica 'neon fish'	#2 CONT.
19	DKOR	Double Knock Out Rose	Rosa 'trouble'	#3 CONT.
13	NBV	Northern Burgundy Arwd Viburnum	Viburnum dentatum 'northern burgundy'	4' B&B
33	GLS	Gro-Low Fragrant Suncac	Rhus aromatica 'gro-low'	#2 CONT.
5	PGHT	Pragee Hydrangea (fl)	Hydrangea paniculata 'grandiflora' (fl)	1 1/2" B&B



SCALE: 1/8"=1'-0"

FOX HEAD RESIDENCE - LANDSCAPE PLAN

City of Waukesha
Waukesha County, Wisconsin

Checked By: SS
Drawn By: 10/27/14
SR

Revised: 11/11/14 SR
Revised: 12/01/14 RS
Revised: 1/14/15 RS
Revised: 2/05/15 RS
Revised: 4/8/15
Revised: 4/2/15
Revised: 4/2/15
Revised: 4/2/15

L1

LANDSCAPE ARCHITECTS
2000 MANHATTAN STREET
WILSON, WI 53190
TEL: (262) 832-2941
FAX: (262) 831-0566

