



333 East Chicago Street, Milwaukee, WI 53202

PROJECT: PHC-WMH-Heart and Vascular Clinic
416375 DATE: 3/29/2017

SUBJECT: ProHealth Care Preliminary Plan Commission Submisson TRANSMITTAL ID: 00008

PURPOSE: For your approval VIA: Hand

FROM

NAME	COMPANY	EMAIL	PHONE
Tony Breitlow 333 East Chicago Street Milwaukee WI 53202 United States	Eppstein Uhen Architects, Inc.	tonyb@eua.com	+1(414)291-8171

TO

NAME	COMPANY	EMAIL	PHONE
Jennifer Andrews 201 Delafield Street, Room 200 Waukesha WI 53188	City of Waukesha - Planning Dept	jmandrew@ci.waukesha.wi.us	

REMARKS: The following documents are respectfully submitted by ProHealth Care and Eppstein Uhen Architects for preliminary Plan Commission review and approval.

- Completed Application for Review
- Plan commission Checklist
- Written project statement
- Light Fixture Cut Sheets
- Four (4) full size drawing sets
- Seven (7) reduced size drawing sets
- USB flash drive containing electronic copies of all documents
- Review fee check #77514 in the amount of \$855.00

Please note: The Plat of Survey is currently being prepared and will be submitted separately when ready.

Please don't hesitate to contact me if there are any issues with our submission.

Thank you,
Tony Breitlow

COPIES: John McGinnis (ProHealth Care)

PLAN COMMISSION CHECKLIST COMMERCIAL and INDUSTRIAL PRELIMINARY PLAN REVIEW

Four (4) full-size, (one of which must be in COLOR) and seven (7) reduced copies unless waived by the department. The reduced set of copies should include the project location map showing a ½ mile radius, a COLORED landscape plan, COLORED building elevations, and exterior light fixture cut sheets.

One digital copy of all plans (JPG or PDF) including the colored plans.

Written Statement - A written statement containing a general description of the project, including ownership, the number of phases for development, if more than one, the number of buildings, the area of each building, and the number of parking stalls.

Plat of Survey - A plat of survey by a registered land surveyor, showing thereon the exact net area of the site, and of each phase, if more than one phase.

Site Plan. An accurate scale map of the proposed development at an engineers scale of at least 1" = 40' showing the following where applicable:

Existing topography referenced to City datum and platted at 2 foot contour intervals, except that five foot intervals may be accepted where warranted by extremes in topography. These contours must extend at least 20 feet onto surrounding properties;

All existing rights-of-way, easements, pavements, structures, utilities, drainage facilities, lot lines and natural features such as wooded areas, streams, ponds, wetlands, and floodplain;

Locations, dimensions and grades of all proposed structures, with each structure referenced to the building plans, and including (on drawing) the locations and grade of all buildings within 100' of property;

Proposed topography showing grading of all proposed roadways, drives, walks, parking areas, and stormwater management facilities;

Generalized landscaping plan showing areas to be planted and nature of plantings; and

General utility system plans, including sanitary sewer, storm drainage, water distribution, telephone, gas, and electric in sufficient detail to allow evaluation of their adequacy. The developer shall consult with the Engineering Department and the Water Utility for direction.

Building Plans. Of sufficient detail to illustrate the architectural character of every building including the following:

Partial building elevation sketches indicating representative materials, finishes, and architectural style, with reference to all sides of every building;

Representative floor plans indicating layout of each floor.

Review Fee. A review fee equal to \$300 plus \$15.00 per 1000 sq. ft. of floor area.

FEE: 37,000 SF @ \$15.00 PER 1,000 SF = \$555

+\$300

\$855 TOTAL FEE Modified October 28, 2014

SUSTAINABILITY CHECKLIST FOR NEW COMMERCIAL CONSTRUCTION MAJOR RENOVATION

PROJECT NAME:

DATE:

SUSTAINABILITY CHECKLIST FOR NEW COMMERCIAL CONSTRUCTION MAJOR RENOVATION

PROJECT NAME:

DATE:

SUSTAINABLE SITES	Notes	SUSTAINABLE SITES CONT'D	Notes
Construction Activity Pollution Prevention		Stormwater Quantity & Quality Design	
Chapter 32 permit		Chapter 32 permit	
Site Selection		Heat Island Effect-Nonroof	
Not farmland		50% shade in 5 years	
Not lower than 5 feet above 100 year flood elevation		Materials with SRI of at least 29	
Protect species habitat		Heat Island Effect-Roof	
Not within 100 feet of wetlands		High albedo roof surface	
Not within 50 feet of water body		Green Roof	
Not previously parkland		Light Pollution Reduction	
Dev. Density and Community Connectivity		Indoor Lighting	
Previously developed site		Reduced lighting 11pm-5am	
1/2 mile to basic services		Meet ANSI/ASHRAE/IESNA standards	
Pedestrian access to services		Exterior Lighting	
W/in 1/2 mile of dense neighborhood		WATER EFFICIENCY	
Brownfield Redevelopment		Water Use Reduction	
Site documented as contaminated		Toilets	
Defined as brownfield by gov't agency		Faucets	
Alternative Transportation		Prerise spray valves	
Public Transportation Access		Water Efficient Landscaping	
Bicycle Storage & Changing Rooms		Reduce water consumption by 50% for landscaping	
Low Emitting & Fuel-Efficient Vehicles		Use no potable water for irrigation	
Parking Capacity		ENERGY & ATMOSPHERE	
Provide no new parking		On-site Renewable Energy	
Sized to no exceed minimum zoning requirement		MATERIALS & RESOURCES	
Preserve future parking in greenspace		Storage & Collection of Recyclables	
Protect or Restore Habitat		Building Reuse	
Limit site disturbance		Construction Waste Management	
Restore greenspace		Materials Reuse	
Maximize Open Space		Recycled Content	
20% open space		Regional Materials	
Vegetated roof		Rapidly Renewable Materials	
25% Pedestrian oriented hardscape areas			
Wetlands or naturally designed pond			



PROJECT DESCRIPTION

Project Name: ProHealth Care – Heart and Vascular
Waukesha Memorial Hospital Campus, Waukesha, Wisconsin

Date: April 26, 2017

PROJECT SUMMARY

ProHealth Care and Eppstein Uhen Architects respectfully submit designs for a proposed new free-standing clinic building on a portion of the Waukesha Memorial Hospital Campus. The new clinic will be a center of excellence for heart and vascular outpatient services. The building will be approximately 37,000 square feet in size and be located along the west side of the campus site, north of the existing parking structure and south of the existing daycare building. A partial lower level will be provided to house mechanical and electrical services. The building will be designed so that it can accommodate a second floor if so pursued in the future by ProHealth Care and approved by the City of Waukesha.

A new surface parking lot containing 53 stalls is to be provided at the east side of the new building. An access ramp/drive is proposed from this east lot up to the upper level of the existing parking structure. The existing surface parking lot in the northwest corner of the site has 74 stalls which are to be re-paved and striped but otherwise left as is in anticipation of future utility work. Patients and staff will have the ability to park in the parking structure and have direct access to the new building via an enclosed connector.

A cantilevered canopy will be provided at a front drop-off drive. Small cantilevered canopies will also be provided at the exterior doors located at the north and west sides of the building. Patio space will be provided along the west elevation for staff to step outside during their break or lunch hour.

To provide an enclosed path of travel from the hospital to the new building, the connector that runs between the new building and the parking structure will also tie into the existing access tunnel that runs between the parking structure and the lower level of the hospital.

Programmed elements for the clinic will include the following: Cardiac Rehabilitation facilities, Cardiology & Cardio Thoracic Surgery clinics, Cardiovascular Disease (CVD) treatment spaces, department offices, and community education spaces.

Sincerely,

Tony Breitlow
Project Manager, Eppstein Uhen Architects

333 E Chicago St.
Milwaukee, WI 53202
414 271 5350 : main
414 271 7794 : fax

222 W. Washington Ave
Suite 650
Madison, WI 53703
608 442 5350 : main
608 442 6680 : fax



PROJECT DESCRIPTION

Project Name: ProHealth Care – Heart and Vascular
Waukesha Memorial Hospital Campus, Waukesha, Wisconsin

Date: April 26, 2017

PROJECT SUMMARY

ProHealth Care and Eppstein Uhen Architects respectfully submit designs for a proposed new free-standing clinic building on a portion of the Waukesha Memorial Hospital Campus. The new clinic will be a center of excellence for heart and vascular outpatient services. The building will be approximately 37,000 square feet in size and be located along the west side of the campus site, north of the existing parking structure and south of the existing daycare building. A partial lower level will be provided to house mechanical and electrical services. The building will be designed so that it can accommodate a second floor if so pursued in the future by ProHealth Care and approved by the City of Waukesha.

A new surface parking lot containing 53 stalls is to be provided at the east side of the new building. An access ramp/drive is proposed from this east lot up to the upper level of the existing parking structure. The existing surface parking lot in the northwest corner of the site has 74 stalls which are to be re-paved and striped but otherwise left as is in anticipation of future utility work. Patients and staff will have the ability to park in the parking structure and have direct access to the new building via an enclosed connector.

A cantilevered canopy will be provided at a front drop-off drive. Small cantilevered canopies will also be provided at the exterior doors located at the north and west sides of the building. Patio space will be provided along the west elevation for staff to step outside during their break or lunch hour.

To provide an enclosed path of travel from the hospital to the new building, the connector that runs between the new building and the parking structure will also tie into the existing access tunnel that runs between the parking structure and the lower level of the hospital.

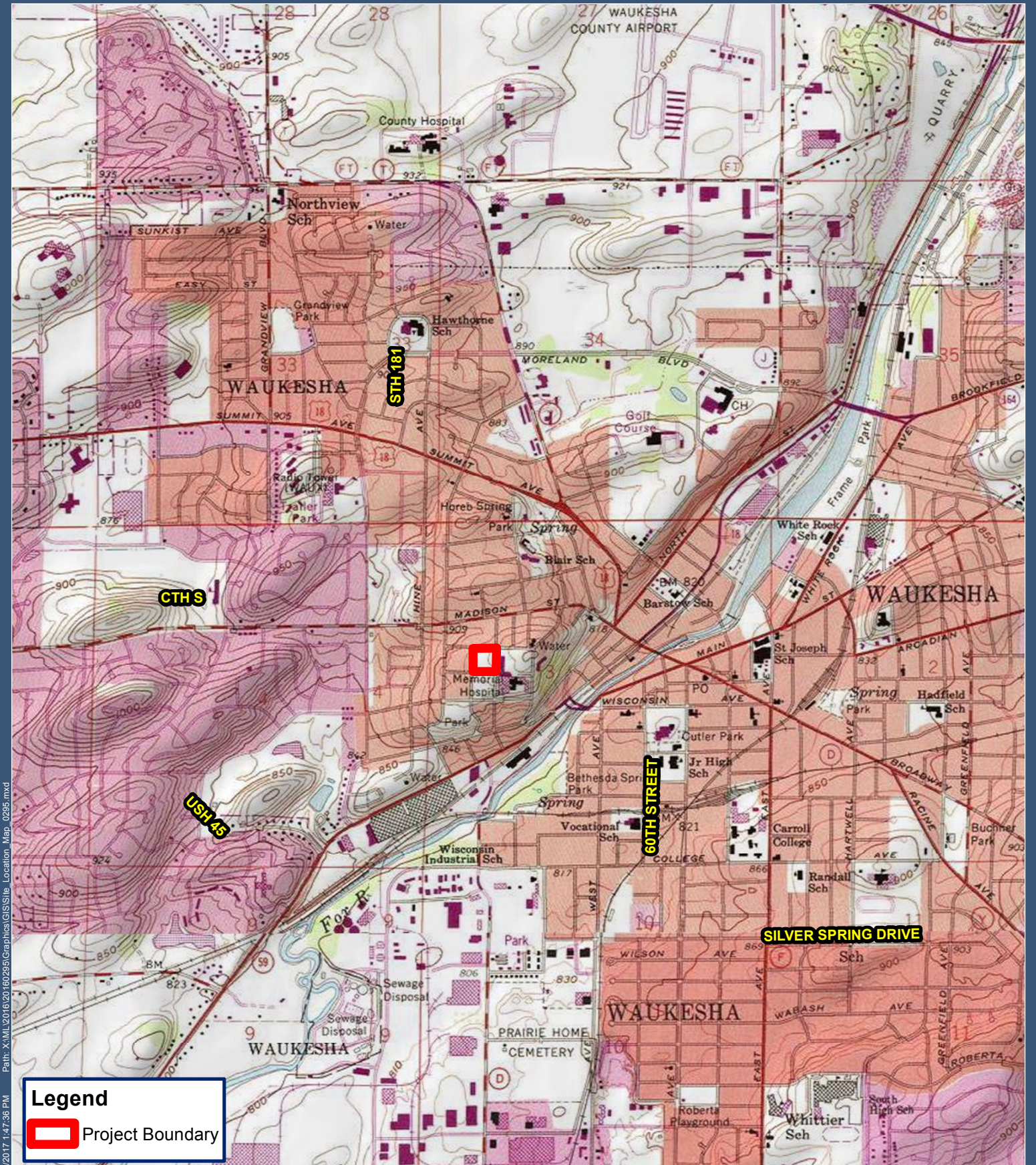
Programmed elements for the clinic will include the following: Cardiac Rehabilitation facilities, Cardiology & Cardio Thoracic Surgery clinics, Cardiovascular Disease (CVD) treatment spaces, department offices, and community education spaces.

Sincerely,


Tony Breitlow
Project Manager, Eppstein Uhen Architects

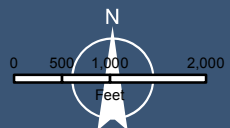
333 E. Chicago St.
Milwaukee, WI 53202
414 271 5350 : main
414 271 7794 : fax

222 W. Washington Ave.
Suite 650
Madison, WI 53703
608 442 5350 : main
608 442 6680 : fax



Legend

 Project Boundary



0 500 1,000 2,000
Feet

1 in = 2,000 ft

SITE LOCATION MAP

**PROHEALTH CARE WAUKESHA MEMORIAL HOSPITAL
HEART AND VASCULAR CLINIC
WAUKESHA COUNTY, WISCONSIN**

FIGURE # 1

GRAEF

User: 1391 Date Saved: 3/28/2017 1:47:36 PM Path: X:\MIL2016\20160229\5\Graphics\CIS\Site_Location_Map_0295.mxd



AEL

*Architectural Egress Luminaire
Fluorescent*

Luminaire Led

Vandal Resistant

Path of Egress

Path of egress lighting presents a particularly tough challenge requiring precise optical performance, excellent energy efficiency, high reliability and the ability to withstand extreme environmental conditions. The AEL Fluorescent meets these challenges with a wet location listing, AC or AC with Emergency backup and toughness that comes with over thirty years of experience designing and producing Vandal Resistant Lighting. The Emergency battery backup can be remotely mounted or integral to the fixture.



LIFETIME WARRANTY

Luminaire Vandal Resistant fixtures feature a lifetime warranty. Luminaire Lighting Corporation will repair or replace any fixture damaged due to vandalism for the lifetime of the installation.

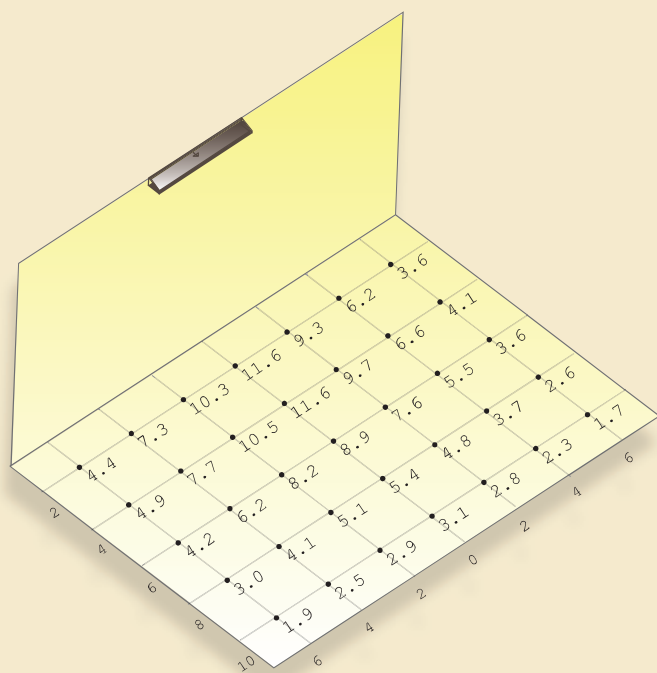
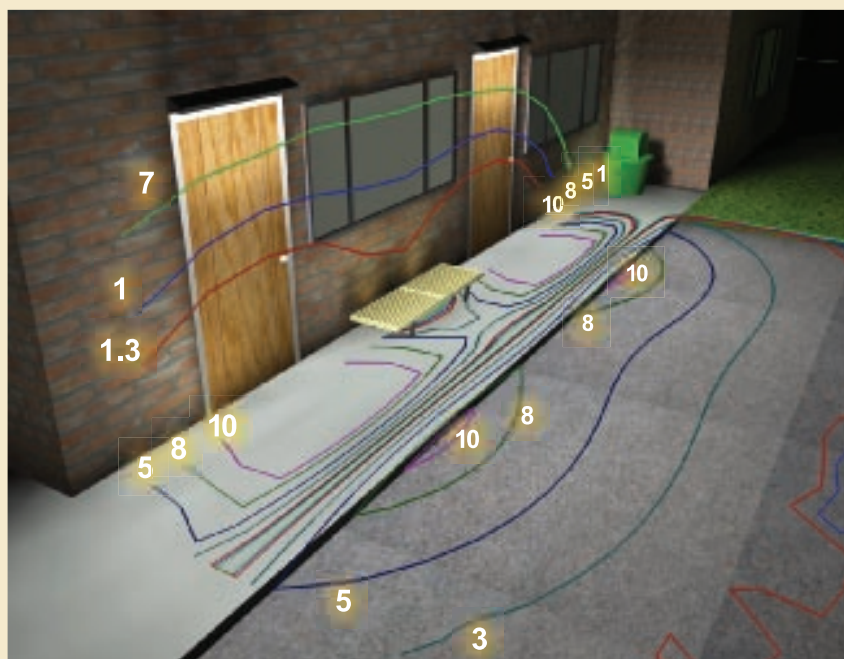


Photometrically Superior

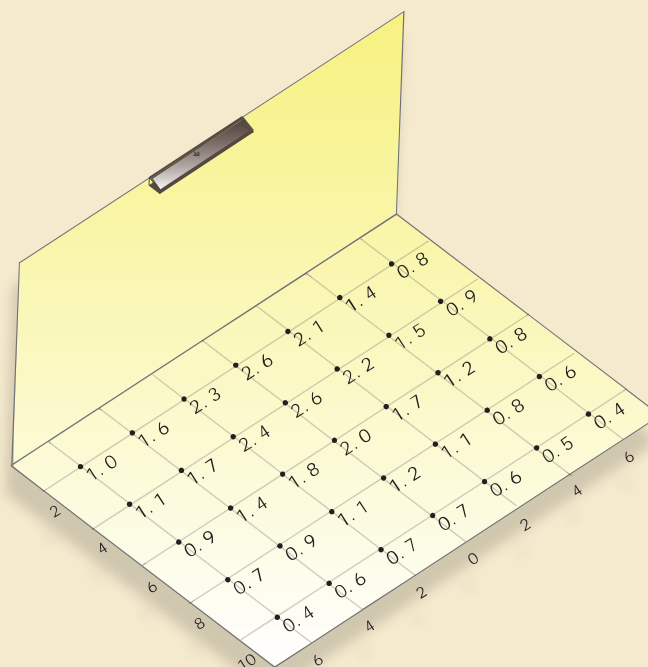
Precise optical design allows the AEL to provide exceptional photometric performance.

Although small in size, the

AEL is able to maintain a well defined forward throw while still providing security illumination to the door over which it is mounted. The full cut-off distribution eliminates unwanted light pollution and therefore can help achieve the LEED Sustainable Site credit 8 for Zones 1 thru 4.



AEL 36-139HO mounted at 7'6"
Avg fc 6.69



AEL36-139HO-EMB mounted at 7'6"
Avg fc 1.53

Fast Installation & Maintenance

Quick Mount

Installation and field maintenance is made easy with the integrated quick mount system. The result is reduced installation costs and simplified maintenance procedures. The integral angled design of the quick mount bracket actually draws the fixture to the mounting surface and assures a tight, secure vandal resistant installation.

Easy Quick Mount System



1. Release Quick Mount by loosening the two vandal resistant screws



2. Quick Mount detaches from AEL body easily

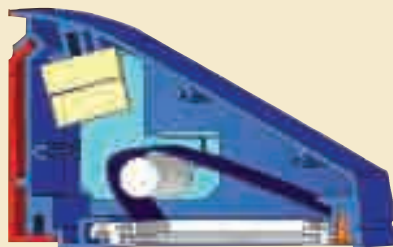


3. Level and secure Quick Mount to wall



4. AEL attaches to Quick Mount and is secured with two vandal resistant screws

Cut Away Views



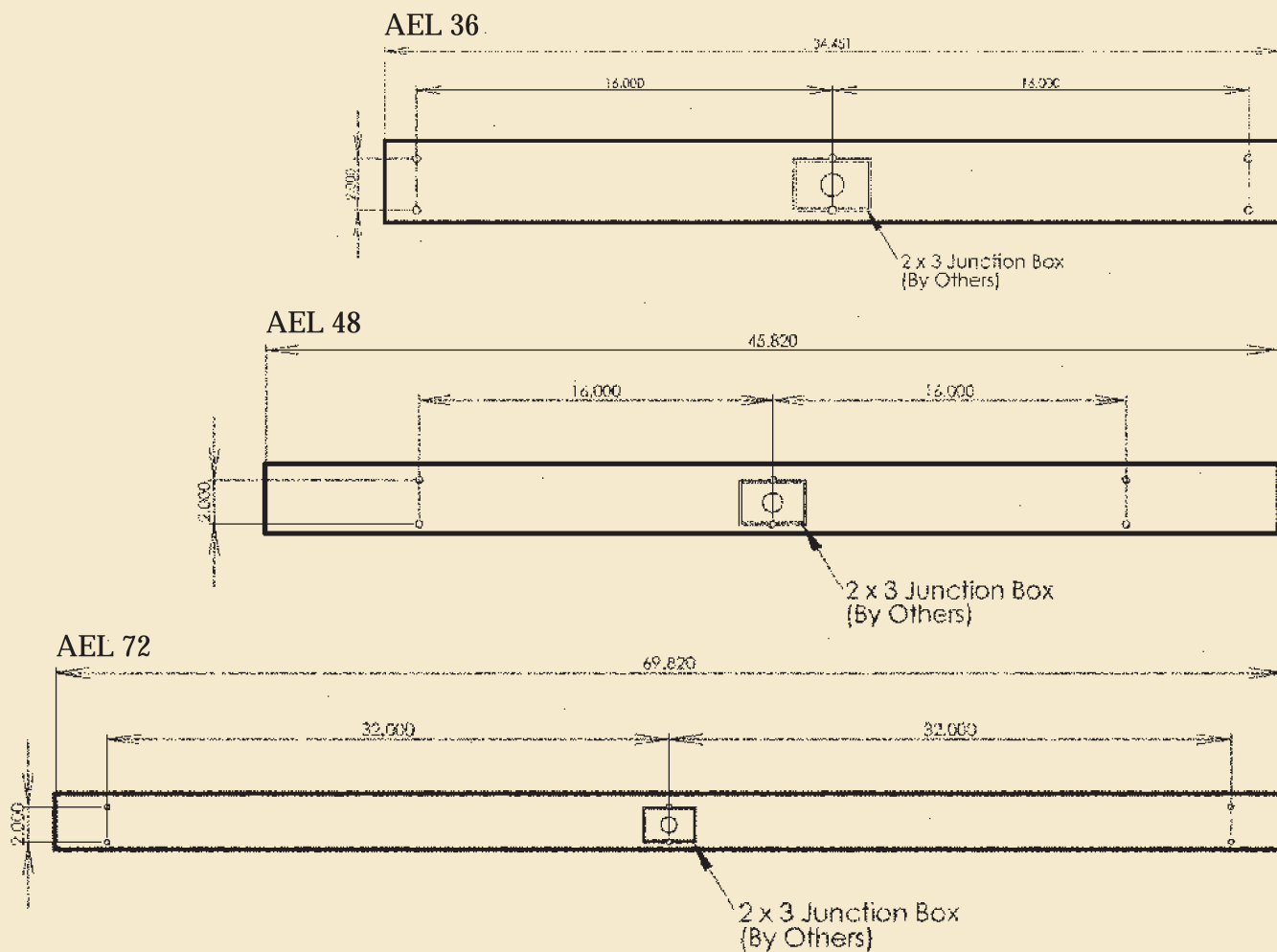
The quick mount bracket, shown in red, is integrated to the fixture body with a carefully calculated angle that draws the body close to the mounting surface for a tight fit.



The lens door features an integral concealed hinge that allows for easy re-lamping.

Details & Options

Mounting Bracket Details



Battery Options

The AEL is available with both an integral or remote battery providing 90 minutes of illumination for the path of egress. The AEL 48 offers an option for an integral or remote emergency battery to provide illumination of two lamps for municipalities requiring lamp redundancy.

LED Options

The LED version of our AEL will be available in October 2009. Please see AEL LED brochure for details.

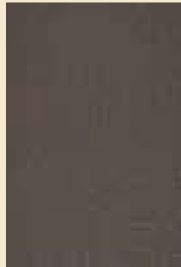
Ordering Information

Color Samples

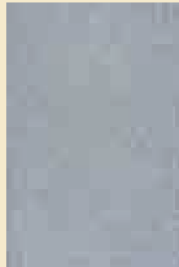
Due to printing variances, the colors as represented are not an exact match to the product. For an exact match, we strongly recommend obtaining a free color sample prior to ordering.



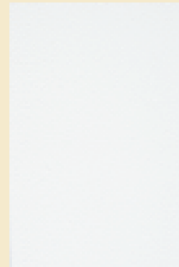
Black Hammertone



Bronze Hammertone



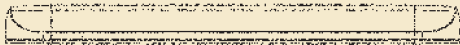
Silver Hammertone



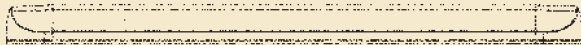
White Orange Peel



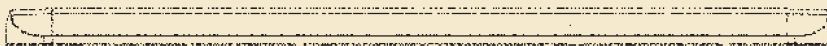
Prime Coat (Paintable)



AEL 36						
Series	Lamps (Not included) 121-(1) F21T5 139HO-(1) F39T5HO	Volts 120 277	Lens CL-Clear Polycarbonate	Colors BKH-Black Hammertone BZH-Bronze Hammertone SVH-Silver Hammertone WOP-White Orange Peel PCP-Prime coat, paintable CUST-Custom color, consult factory.	Options PC-Photoelectric switch GLR-Fuse and fuse holder EMB700-Specification grade emergency battery EMB1125R-Specification grade emergency battery pack remote OCC-Occupancy sensor ST/SC-Slotted screws	Accessories TX/SD-TORX® head bit



AEL 48						
Series	Lamps (Not included) 214-(2) F14T5 224HO-(2) F24T5HO 128-(1) F28T5 154HO-(1) F54T5HO	Volts 120 277	Lens CL-Clear Polycarbonate	Colors BKH-Black Hammertone BZH-Bronze Hammertone SVH-Silver Hammertone WOP-White Orange Peel PCP-Prime coat, paintable CUST-Custom color, consult factory.	Options PC-Photoelectric switch GLR-Fuse and fuse holder EMB1250-Specification grade emergency battery pack EMB1250R-Specification grade emergency battery pack remote OCC-Occupancy sensor ST/SC-Slotted screws	Accessories TX/SD-TORX® head bit



AEL 72						
Series	Lamps (Not included) 221-(2) F21T5 239HO-(2) F39T5HO	Volts 120 277	Lens CL-Clear Polycarbonate	Colors BKH-Black Hammertone BZH-Bronze Hammertone SVH-Silver Hammertone WOP-White Orange Peel PCP-Prime coat, paintable CUST-Custom color, consult factory.	Options PC-Photoelectric switch GLR-Fuse and fuse holder EMB1125-Specification grade emergency battery pack EMB1125R-Specification grade 90 minute emergency battery pack remote OCC-Occupancy sensor ST/SC-Slotted screws	Accessories TX/SD-TORX® head bit



Luminaire Led

Date:	Approved:
Type: MAIN ENTRANCE SIDEWALK LIGHTING	
Fixture:	
Project: WMH HEART & VASCULAR	

FCB450, FCB451

Exterior die-cast aluminum bollard.



ORDERING

EXAMPLE: FCB450-120V-70W MH-WH-LD

SERIES	VOLTAGE	SOURCE/TEMPERATURE/LAMP	FINISH	ACCESSORIES
FCB450	120V	PL 26T 32T	BK Black	LD LED Dimming
FCB451	277V 347V [△]	HID 50W MH 70W MH 100W MH	BZ Bronze	EMR Emergency Backup Remote
		LED 3K 350 lumens (28W) FCB451	CC Custom Color	PE Photo Eye
		35K 500 lumens (28W) FCB450	SL Silver	
		4K	WH White	

[△]contact factory

SPECIFICATION

MOUNTING

- A thick die-cast base plate is provided and anchored through with a set of three 12" length x 3/8" diameter hot dipped anchor bolts. Heavy gauge base bracketing for bollard installation.
- Installation:** <http://tinyurl.com/jthbwvx>

CONSTRUCTION

- Marine grade, corrosion resistant, heavy walled, high pressure die-cast aluminum. Tubular housing is extruded aluminum.
- Impact resistant, UV stabilized, frosted, polycarbonate diffuser.
- Neoprene continuous closed cell gasket to seal out contaminants. Captive and recessed stainless steel, tamper resistant hex socket screws.

LED

- Lumens stated are the minimum delivered out of the luminaire. LED lifetime is greater than or equal to 70,000 hours with the lumen depreciation greater than L70. All of our luminaires are LM-80 tested and are ≥ CRI80, with a 4-step MacAdam Ellipse color consistency. Integral power supply standard. Input voltage 120V or 277V standard.

FINISH

- Six stage chemical pre-treatment process that includes iron phosphate, to prepare the substrate for a UV stable, super durable standard polyester powder coat.

ELECTRICAL

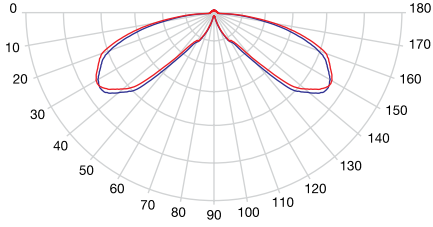
- Socket** PL: Four pin plug-in type compact fluorescent lamp holder. HID: Medium base pulse rated 4KV porcelain socket.
- Ballast** PL: Fluorescent high power factor electronic, UL listed ballast standard. HID: Electronic ballast standard. Ballast has a manufacturer issued 5 year warranty. Electronic voltage universal 120V-277V is standard. Please consult factory for other voltage options.

LISTING

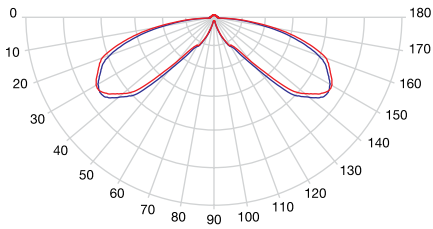
- UL & cUL/ETL, U.S. and CA listed for wet locations. IP65 rating.

PHOTOMETRY

FCB450

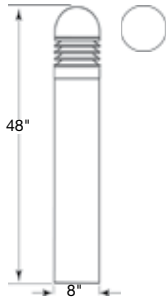


FCB451

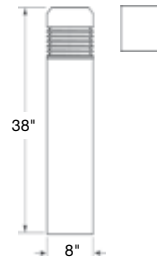


DIMENSIONS

FCB450



FCB451



DESCRIPTION

The Impact Elite family of wall luminaires is the ideal complement to site design. Incorporating modular LightBAR™ technology, the Impact Elite luminaire provides outstanding uniformity and energy-conscious illumination. Combined with a rugged construction, the Impact Elite luminaire is the ideal facade and security luminaire for zones surrounding schools, office complexes, apartments and recreational facilities. UL/cUL listed for wet locations.

Catalog #		Type
Project	WMH HEART & VASCULAR	
Comments	GENERAL OUTDOOR BUILDING LIGHTING	Date
Prepared by		

SPECIFICATION FEATURES

Construction

Heavy-wall, die-cast aluminum housing and removable hinged door frame for precise tolerance control and repeatability. Hinged door inset for clean mating with housing surface and secured via two captive fasteners. Optional tamper-resistant Torx™ head fasteners offer vandal resistant access to the electrical chamber.

Optics

Choice of six patented, high-efficiency AccuLED Optics™ distributions. Optics are precisely designed to shape the light output, maximizing efficiency and application spacing. AccuLED Optics technology creates consistent distributions with the scalability to meet customized application requirements. Offered Standard in 4000K (+/- 275K) CCT and minimum 70 CRI. Optional 3000K CCT, 5000K CCT and 5700K CCT.

Electrical

LED drivers mount to die-cast aluminum back housing for optimal heat sinking, operation efficacy, and prolonged life. Standard drivers feature electronic universal voltage (120-277V 50/60Hz), 347V 60Hz or 480V 60Hz operation, greater than 0.9 power factor, less than 20% harmonic distortion, and are suitable for operation in -40°C to 40°C ambient environments. All fixtures are shipped standard with 10kV/10kA common – and differential – mode surge protection. LightBARs feature an IP66 enclosure rating and maintain greater than 95% lumen maintenance at 60,000 hours per IESNA TM-21. Emergency egress options for -20°C ambient environments and occupancy sensor available.

Mounting

Gasketed and zinc plated rigid steel mounting attachment fits directly to 4" j-box or wall with the Impact Elite "Hook-N-Lock" mechanism for quick installation. Secured with two captive corrosion resistant black oxide coated allen head set screws concealed but accessible from bottom of fixture.

Finish

Cast components finished in a five-stage super TGIC polyester powder coat paint, 2.5 mil nominal thickness for superior protection against fade and wear. Standard colors include black, bronze, grey, white, dark platinum and graphite metallic. RAL and custom color matches available. Consult the McGraw-Edison Architectural Colors brochure for the complete selection.

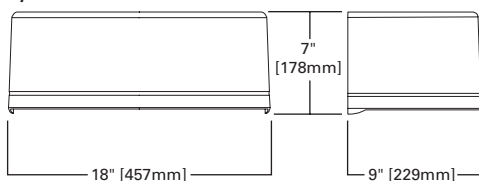
Warranty

Five-year warranty.

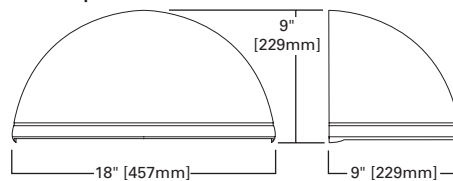


DIMENSIONS

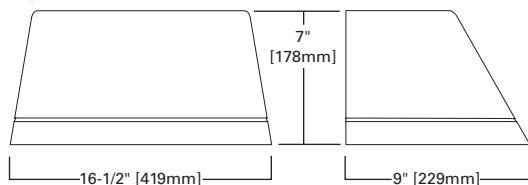
Cylinder



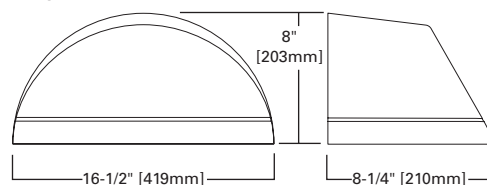
Quarter Sphere



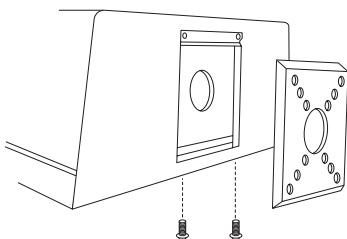
Trapezoid



Wedge



HOOK-N-LOCK MOUNTING



ISC/ISS/IST/ISW IMPACT ELITE LED



1 - 2 LightBARs
Solid State LED

WALL MOUNT LUMINAIRE

CERTIFICATION DATA

UL/cUL Listed
LM79 / LM80 Compliant
IP66 LightBARs
ISO 9001
DesignLights Consortium® Qualified*

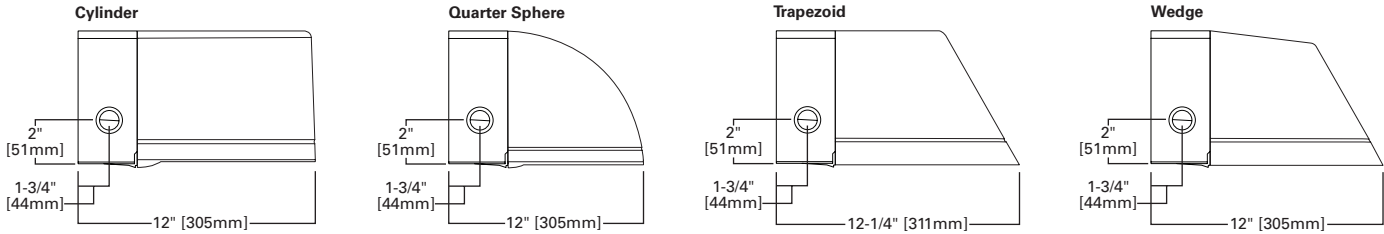
ENERGY DATA

Electronic LED Driver
>0.9 Power Factor
<20% Total Harmonic Distortion
120-277V/50 & 60Hz, 347V/60Hz,
480V/60Hz
-40°C Minimum Temperature
40°C Ambient Temperature Rating

SHIPPING DATA

Approximate Net Weight:
18 lbs. (8 kgs.)

THRUWAY BACK BOX



POWER AND LUMENS BY BAR COUNT

Number of LightBARs	E01		E02		F01		F02	
	21 LED LightBAR				7 LED LightBAR			
Drive Current	350mA				1A			
Power (Watts)	120-277V	25W	47W	26W	50W			
Current (A)	120V	0.22	0.40	0.22	0.42			
	277V	0.10	0.18	0.10	0.19			
Power (Watts)	347V or 480V	31W	52W	32W	55W			
Current (A)	347V	0.11	0.16	0.11	0.17			
	480V	0.16	0.18	0.16	0.18			
Optics								
BL2	Lumens	2,738	5,476	2,260	4,521			
	Bug Rating	B1-U0-G1	B1-U0-G1	B1-U0-G1	B1-U0-G1			
BL3	Lumens	2,702	5,405	2,231	4,462			
	Bug Rating	B1-U0-G1	B1-U0-G2	B1-U0-G1	B1-U0-G1			
BL4	Lumens	2,613	5,225	2,157	4,313			
	Bug Rating	B1-U0-G1	B1-U0-G2	B1-U0-G1	B1-U0-G1			
GZW	Lumens	2,785	5,570	2,299	4,598			
	Bug Rating	B2-U0-G2	B3-U0-G3	B1-U0-G1	B2-U0-G2			
SLR/SL	Lumens	2,435	4,869	2,010	4,020			
	Bug Rating	B1-U0-G1	B1-U0-G2	B1-U0-G1	B1-U0-G2			

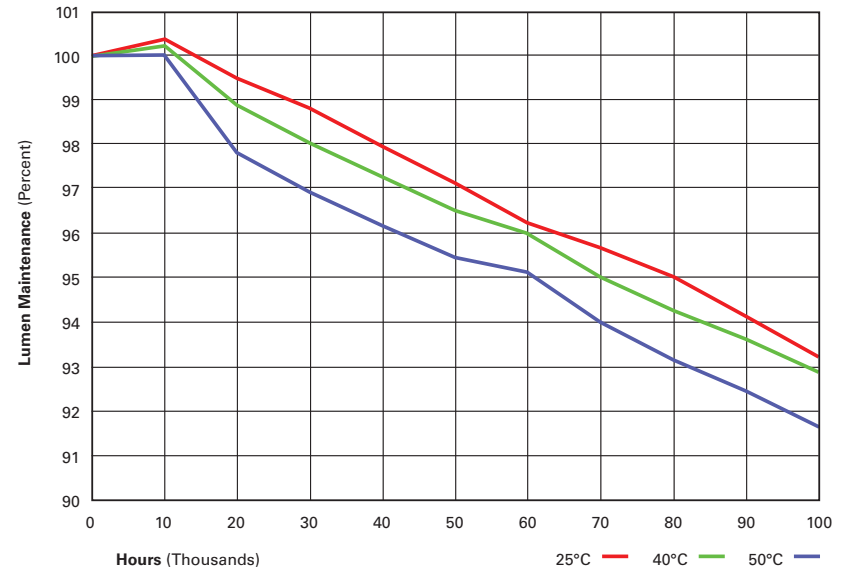
LUMEN MAINTENANCE

Ambient Temperature	25,000 Hours*	50,000 Hours*	60,000 Hours*	100,000 Hours	Theoretical L70 (Hours)
25°C	> 99%	> 97%	> 96%	> 93%	> 450,000
40°C	> 98%	> 97%	> 96%	> 92%	> 425,000
50°C	> 97%	> 96%	> 95%	> 91%	> 400,000

* Per IESNA TM-21 data.

LUMEN MULTIPLIER

Ambient Temperature	Lumen Multiplier
10°C	1.02
15°C	1.01
25°C	1.00
40°C	0.99



ORDERING INFORMATION

Sample Number: ISC-E02-LED-E1-BL3-GM

Product Family ¹	Number of LightBARs ^{2,3}	Lamp Type	Voltage	Distribution	Color ⁵
ISC=Impact Elite LED Small Cylinder ISS=Impact Elite LED Small Quarter Sphere IST=Impact Elite LED Small Trapezoid ISW=Impact Elite LED Small Wedge	E01=(1) 21 LED LightBAR E02=(2) 21 LED LightBARs F01=(1) 7 LED LightBAR F02=(2) 7 LED LightBARs	LED=Solid State Light Emitting Diodes	E1=Electronic (120-277V) 347=347V 480=480V ⁴	BL2=Type II w/Back Light Control BL3=Type III w/Back Light Control BL4=Type IV w/Back Light Control GZW=Wall Grazer Wide SLL=90° Spill Light Eliminator Left SLR=90° Spill Light Eliminator Right	AP=Grey BZ=Bronze BK=Black DP=Dark Platinum GM=Graphite Metallic WH=White
Options (Add as Suffix)				Accessories (Order Separately) ¹¹	
2L=Two Circuits ⁶ 7030=70 CRI / 3000K CCT ⁷ 7050=70 CRI / 5000K CCT ⁷ 7060=70 CRI / 5700K CCT ⁷ 8030=80 CRI / 3000K CCT ⁷ P=Button Type Photocontrol (Available in 120, 208, 240 or 277V. Must Specify Voltage) OSB=Occupancy Sensor with Back Box (Specify 120V or 277V) ⁸ BBB-XX=Battery Pack with Back Box (Specify 120V or 277V) ⁹ CWB-XX=Cold Weather Battery Pack with Back Box (Specify 120V or 277V) ¹⁰ DIM=0-10V Dimming Drivers LCF=LightBAR Cover Plate Matches Housing Finish ULG=Uplight Glow TR=Tamper Resistant Hardware				MA1253=10kV Circuit Module Replacement MA1254-XX=Thruway Back Box - Impact Elite Trapezoid MA1255-XX=Thruway Back Box - Impact Elite Cylinder MA1256-XX=Thruway Back Box - Impact Elite Quarter Sphere MA1257-XX=Thruway Back Box - Impact Elite Wedge	

- NOTES:**
- DesignLights Consortium® Qualified. Refer to www.designlights.org Qualified Products List under Family Models for details.
 - Standard 4000K CCT and greater than 70 CRI. LightBARs for downlight use only.
 - 21 LED LightBAR powered by 350mA and 7 LED LightBAR powered by 1A.
 - Only for use with 480V Wye systems. Per NEC, not for use with ungrounded systems, impedance grounded systems or corner grounded systems (commonly known as Three Phase Three Wire Delta, Three Phase High Leg Delta and Three Phase Corner Grounded Delta systems).
 - Custom and RAL color matching available upon request. Consult your lighting representative at Eaton for more information.
 - Low-level output varies by bar count. Consult factory. Not available with 347V or 480V. Available with two bars (E02 or F02) only.
 - Extended lead times apply.
 - Available with E02 or F02, only one bar on street side will be wired to sensor. Time delay factory setting 15-minutes. When ordered with PC option, both bars are connected to photocontrol as primary switching means. Standard sensor lens covers 8" mounting height, 360° coverage, maximum 48" diameter. Not available in all configurations or with BBB or CWB options.
 - Specify 120V or 277V. LED standard integral battery pack is rated for minimum operating temperature 32°F (0°C). Operates one bar for 90-minutes. Not available in all configurations or with OSB option. Consult factory.
 - Specify 120V or 277V. LED cold weather integral battery pack is rated for minimum operating temperature -4°F (-20°C). Operates one bar for 90-minutes. Not available in all configurations or with OSB option. Consult factory.
 - Replace XX with color suffix.



Eaton
1121 Highway 74 South
Peachtree City, GA 30269
P: 770-486-4800
www.eaton.com/lighting

Specifications and dimensions subject to change without notice.

Architectural Egress

AEL

Full Cut-off
Vandal Resistant LED

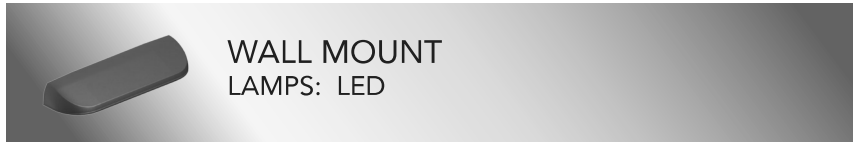
Project Information

Fixture Type _____ Date _____

Job Name **WMH HEART & VASCULAR**

Approved By **OUTDOOR OVER THE DOOR
EGRESS LIGHTING**

Catalog No. **AEL - - - - -**

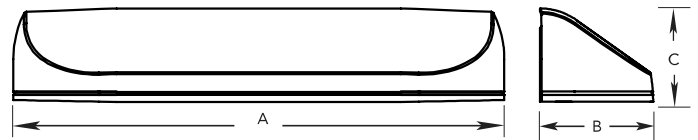


SPECIFICATIONS

Description	The Architectural Egress Luminaire combines a unique, patented design shaped with high performance, full cut-off optics to achieve completely unobtrusive illumination of a space or path of egress. When mounted over a doorway, the fixture is perceived as an element of the building structure and, additionally, provides water protection in the form of a drip cap over the doorway. Multiple lengths are available to match a given door opening and our unique quick mount system facilitates installation and maintenance.
Housing	Marine grade heat treated extruded aluminum. Chemically primed and finished with robotically applied polyester powder coat.
Wall Mount	Marine grade heat treated extruded aluminum. Chemically primed and finished with robotically applied polyester powder coat. Designed to provide quick mounting to housing and secured with (2) captive stainless steel TORX® head screws.
Lens Frame	Marine grade heat treated extruded aluminum, clear anodized. Secured to fixture via integral concealed hinge and (3) captive stainless steel TORX® head screws.
Lens	UV stabilized diffused extruded polycarbonate.
End Caps	Die-cast marine grade aluminum continuously welded to housing. All welds ground smooth.
Reflector	Electrostatically brightened anodized aluminum PVD coated and absolutely color-free of iridescence. Shaped to provide full cutoff, LED point dispersion and maximum efficiency.
Drivers	Constant current drivers at 350mA. High output version utilizes 700mA.
LED	Samsung LM561B Series @ 3000K, 3500K, 4000K and 82 CRI wired in parallel-series. L ₇₀ projected life of 130,000 hours at 50°C. Tested in accordance with LM-80. Ten year warranty on LED boards against operational defects.
Gaskets	Closed cell self-adhesive neoprene to provide watertight seal between fixture and wall and between fixture and lens frame.
UL Listing	U.L., C.U.L., Wet standard.
Lifetime Warranty	Luminaire LED Incorporated will repair or replace any fixture damaged due to vandalism for the lifetime of the installation

DIMENSIONAL DATA

	A	B	C
AEL12	20.79	5.40	3.60
AEL24	32.04	5.40	3.60
AEL36	43.29	5.40	3.60
AEL48	54.75	5.40	3.60
AEL72	78.75	5.40	3.60



ORDERING INFORMATION

SERIES	LENGTH	LED	VOLTS	CCT	LENS	COLORS	OPTIONS	TX/SD (REQUIRED)
AEL								

LENGTH	LED	VOLTS	CCT	LENS	COLORS	OPTIONS
12"	12"	120-277	3000K	DP	BKH -	DIM
24"	10W	347	3500K	Diffused	Black	A/B
36"	24"		4000K	Polycarbonate	Hammertone	PC
48"	10W				BZH -	2B
72"	20W HO				Bronze	SD2
	36"				Hammertone	SD3
	15W				SVH -	GLR
	30W HO				Silver	EMB310
	48"				Hammertone	EMB310ST
	20W				WOP -	EMB20R
	35W HO				White Orange	EMB125R
	72"				Peel	EMB250R
	30W				PCP -	EMBDA
	55W HO				Black Prime	OCC
					Coat, Paintable	ST/SC
					CUST -	
					Custom color,	
					Consult factory	

OPTIONS

DIM	0-10V dimming driver N/A with AEL12.
A/B	Aluminum surface back box. Finished with polyester powder coat to match the fixture.
PC	Photoelectric switch.
2B	(2) LED drivers for independent LED board operation. N/A with AEL12. N/A with the OCC option.
SD2	Tri-level Step-dimming: 25-50-100 light output. Not available in 12". Not available with EMB310.
SD3	Tri-level Step-dimming: 33-66-100 light output. Not available in 12". Not available with EMB310.
GLR	Fuse and fuse holder.
EMB310	1000 lumen self-contained, 90 minute emergency battery pack. Available for 36", 48" and 72" lengths only. 0°C (32°F) to 55°C (131°F). Not available in 347V.
EMB310ST	1000 lumen self-testing, self-contained, 90 minute emergency battery pack. Available for 36", 48" and 72" lengths only. 0°C (32°F) to 55°C (131°F). Not available in 347V.
EMB20R	Remote mounted micro inverter that will operate a 25W maximum load for 90 minutes. 0°C (32°F) to 45°C (113°F).
EMB125R	Stand-alone inverter that will operate a 125W maximum load for 90 minutes. 20°C (68°F) to 30°C (86°F). Not available in 347V.
EMB250R	Stand-alone inverter that will operate a 250W maximum load for 90 minutes. 20°C (68°F) to 30°C (86°F). Not available in 347V.
EMBDA	Two drivers and two emergency battery packs self-contained within fixture for independent light engine operation. Each battery pack will operate each light engine for a minimum of 90 minutes. Available in the 72" length only. Not available in 347V.
OCC	Occupancy sensor. Maximum coverage of 10' radius from 8' height.



PHOTOMETRIC DATA

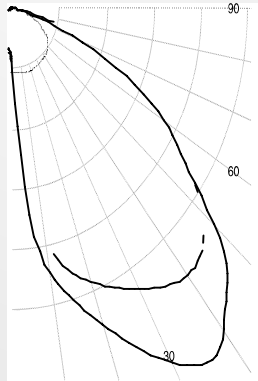
Lumen Output

Model	Input Watts	Delivered Lumens
AEL12 - 10W	10.8W	726
AEL24 - 10W	9.4W	809
AEL24 - 20W	17.6W	1513
AEL36 - 15W	14.1W	1213
AEL36 - 30W	28.6W	2911
AEL48 - 20W	18.8W	1880
AEL48 - 35W	35.2W	3515
AEL72 - 30W	27.9W	3072
AEL72 - 55W	52.2W	5744

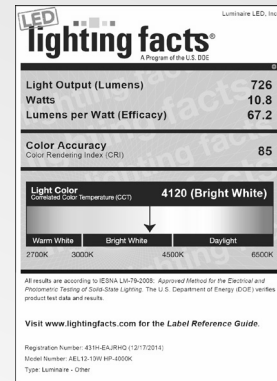
MODEL AEL12-10W-4000K IES FILE: AEL12-10W HP-4000K

Delivered Lumens: 726 Lumens Total Power: 10.8W

Testing was performed in accordance with IES LM-79-08



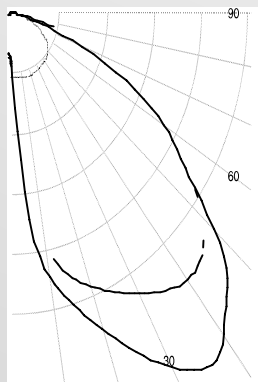
Zone	Lumens	% Lamps
0 - 30	153	21.1
0 - 40	287	39.5
0 - 60	585	80.6
60 - 90	726	100.0
90 - 180	0	0.0
0 - 180	726	100.0



MODEL AEL36-14W-4000K IES FILE: AEL36-14W HP-4000K

Light Output: 1213 Lumens Total Power: 14.09W

Testing was performed in accordance with IES LM-79-08



Zone	Lumens	% Lamps
0 - 30	380.5	31.4
0 - 40	634.8	52.3
0 - 60	1063	87.7
60 - 90	149.6	12.3
0 - 90	1213	100.0
90 - 180	0.0	0.0
0 - 180	1213	100.0

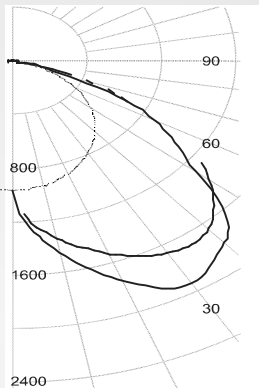


PHOTOMETRIC DATA CONTINUED...

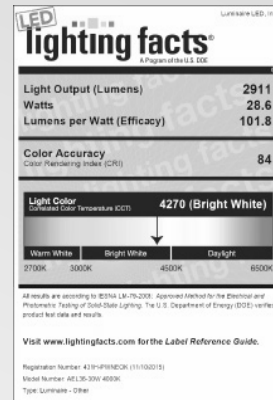
MODEL AEL36-30W-4000K IES FILE: LLI-15268-1

Light Output: 2911 Lumens Total Power: 28.6W

Testing was performed in accordance with IES LM-79-08



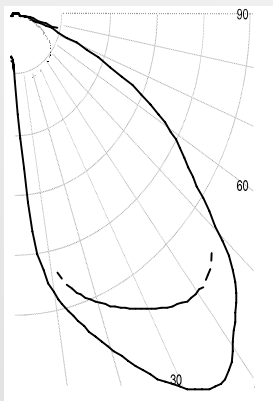
Zone	Lumens	% Lamps
0 - 30	754	25.9
0 - 40	1308	44.9
0 - 60	2417	83.0
60 - 90	494	17.0
0 - 90	2911	100.0
90 - 180	0.0	0.0
0 - 180	2911	100.0



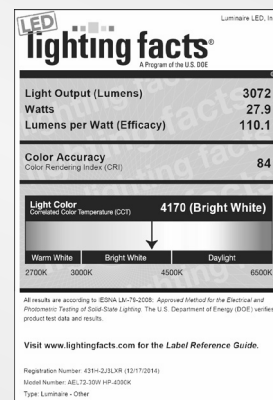
MODEL AEL72-30W-4000K IES FILE: AEL72-30W HP-4000K

Delivered Lumens: 3,072 Lumens Total Power: 27.9W

Testing was performed in accordance with IES LM-79-08

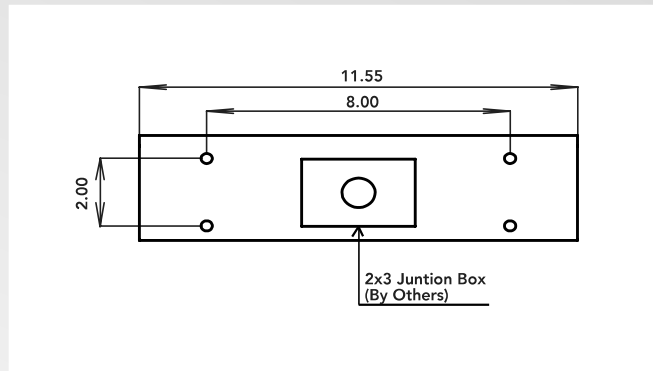


Zone	Lumens	%Lamps
0 - 30	771	25.1
0 - 40	1353	44.1
0 - 60	2529	82.3
60 - 90	3072	100.0
0 - 90	1718	17.7
90 - 180	542	0.0
0 - 180	3072	100.0

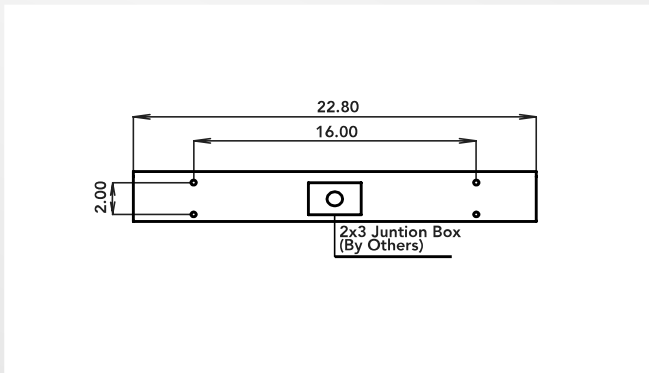


WALL MOUNTING BRACKET DETAIL

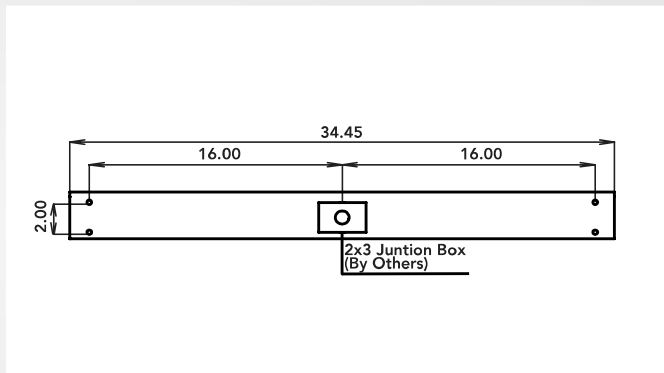
AEL 12



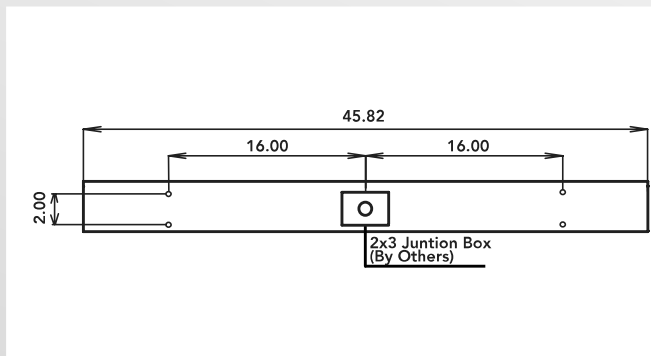
AEL24



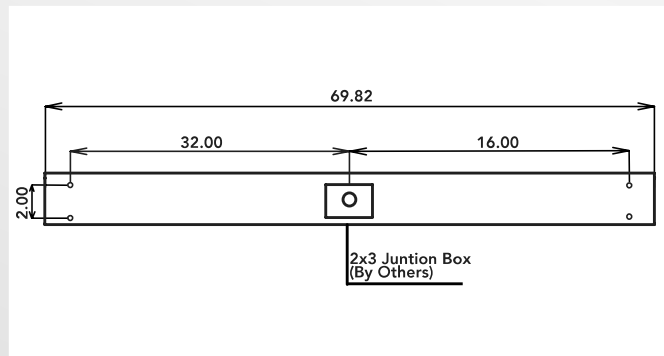
AEL36



AEL48



AEL72



LED AREA LIGHTS - AEROMAX™ MEDIUM (XAMU)



DOE LIGHTING FACTS

Department of Energy has verified representative product test data and results in accordance with its Lighting Facts Program. Visit www.lightingfacts.com for specific catalog strings.

US patent 7828456, 7952293, 8002428 and CAN 2693131 & 2701653 and US & Int'l. patents pending

SMARTTEC™ - LSI drivers feature integral sensor which reduces drive current, when ambient temperatures exceed rated temperature.

ENERGY SAVING CONTROL OPTIONS – DIM – 0-10 volt dimming enabled with controls by others. BLS – Bi-level switching responds a 120-277V signal from separate controller or sensor (by others). Low light level decreased to 30% maximum drive current.

OCCUPANCY SENSOR (IMS) - Optional internal passive infrared motion sensor activates switching of luminaire light levels. High level light activated and increased to full bright in 1-2 seconds upon detection of motion. Low light level (30% maximum drive current) activated when target zone is absent of motion activity for ~ 2 minutes and ramps down (10-15 sec.) to low level. Sensor located on the front of optical assembly. Sensor optic has a detection cone of approximately 45°. Examples of detection - occurs 30' out from a 30' mounting height pole.

LEDS - Select high-brightness LEDs in Cool White (5000K) or Neutral White (4000K) color temperature. 70 CRI.

DISTRIBUTION/PERFORMANCE - Types 3, FT and 5. Exceptional uniformity creates bright environment at lower light levels. Improved backlight cutoff minimizes light trespass.

HOUSING - One-piece, die-formed aluminum, weather-tight housing contains factory prewired driver and field connections. Extruded one-piece EPDM gasketed wiring access door (with safety lanyard) located underneath and utilizes tool-less thumbscrew fastener. Fixture is IP65 rated.

OPTICAL UNIT - Clear tempered flat glass lens sealed to aluminum optics housing creates a sealed optical unit (includes pressure-stabilizing breather). Optical unit is recessed into housing cavity and sealed to the housing with extruded one-piece EPDM gasket. Optical unit lanyard serves dual purposes of safety and provides positive ground between unit and housing.

MOUNTING - Tapered rear design allows fixtures to be mounted in a quad pattern without the need for extension arms. Use with 3" reduced drilling pattern on round and square poles. A round pole plate (X4RPP, X5RPP) is required for mounting to round poles. Wall mount available by ordering wall mounting bracket (BKS-XBO-WM-* -CLR). See Accessory Ordering Information chart for all brackets.

ELECTRICAL - A terminal block for attachment of incoming primary wiring is supplied. Two-stage surge protection (including separate surge protection built into electronic driver) meets IEEE C62.41.2-2002, Location Category C. Available with universal voltage power supply 120-277VAC (50/60Hz input), and 347-480 VAC. Optional twistlock photocell receptacle is available. Photocell must be ordered separately.

DRIVER - Available in SS (Super Saver) and HO (High Output) drive currents (Drive currents are factory programmed). Components are fully encased in potting material for moisture resistance. Driver complies with IEC and FCC standards. Driver and key electronic components can easily be accessed.

OPERATING TEMPERATURE - -40°C to +50°C (-40°F to +122°F).

FINISH - Fixtures are finished with LSI's DuraGrip® polyester powder coat finishing process. The DuraGrip finish withstands extreme weather changes without cracking or peeling.

WARRANTY - LSI LED fixtures carry a limited 5-year warranty.

PHOTOMETRICS - Please visit our web site at www.lsi-industries.com for detailed photometric data.

SHIPPING WEIGHT (in carton) - 39 lbs. / 17.7 Kg

LISTING - ETL listed to U.S. and International safety standards. Suitable for wet locations. For a list of the specific products in this series that are DLC listed, please consult the LED Lighting section of our website or the Design Lights website at www.designlights.org.

LIGHT OUTPUT - XAMU						
		# of LEDs	Lumens (Nominal)			Watts (Nominal)
			Type 3	Type FT	Type 5	
Cool White	SS	128	13500	14100	12100	139
	HO	128	16500	17300	14800	176
Neutral White	SS	128	12400	13200	11200	139
	HO	128	15000	15800	12500	176

LED Chips are frequently updated therefore values may increase.

This product, or selected versions of this product, meet the standards listed below. Please consult factory for your specific requirements.



Fixtures comply with ANSI C136.31-2010 American National Standard for Roadway Lighting Equipment - Luminaire Vibration 3G requirements.



Project Name _____ Fixture Type _____
 Catalog # _____

LED AREA LIGHTS - AEROMAX™ MEDIUM (XAMU)

LUMINAIRE ORDERING INFORMATION

TYPICAL ORDER EXAMPLE: **XAMU FT LED 128 HO CW UE WHT PCR**

Prefix	Distribution	Light Source	# of LEDs	Drive Current	Color Temperature	Input Voltage	Finish	Optional Controls	Optional Sensor/Options
XAMU	3 - Type III 5 - Type V FT - Forward Throw	LED	128	SS - Super Saver HO - High Output	CW - Cool White (5000K) NW - Neutral White (4000K)	UE - Universal Voltage (120-277) 347-480 - Universal Voltage (347-480V)	BLK - Black BRZ - Bronze GPT - Graphite MSV - Metallic Silver PLP - Platinum Plus SVG - Satin Verde Green WHT - White	Wireless Control System^{1,2} (blank) - None PCM - Platinum Control System PCMH - Host/Satellite Platinum Control System GCM - Gold Control System GCMH - Host/Satellite Gold Control System DIM - 0-10 volt dimming (required for satellite fixtures) Stand-Alone Control (blank) - None DIM - 0-10 volt dimming ³ (from external signal) BLS - Bi-level Switching ⁴ (from external signal - required 120-277V controls system voltage)	Sensor IMS - Integral Motion Sensor ⁵ Options PCR - Photoelectric Control Receptacle ⁶

LUMINAIRE EPA CHART - XAMU

	Single	1.4
	D180°	2.8
	D90°	2.4
	T90°	4.0
	TN120°	4.0
	Q90°	4.7

Note: House Side Shield adds to fixture EPA. Consult Factory.

ACCESSORY ORDERING INFORMATION¹

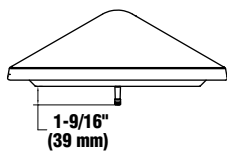
(Accessories are field installed)

Description	Order Number	Description	Order Number
BKA-XBO-EC-6-CLR 6" Extension Arm	382136CLR	FK120 Single Fusing (120V)	FK120 ⁹
BKS-XBO-WM-* -CLR Wall Mounting Bracket	382132CLR	FK277 Single Fusing (277V)	FK277 ⁹
XAMU-HSS House Side Shield (Black only)	524670BLK ⁷	DFK208, 240 Double Fusing (208V, 240V)	DFK208,240 ⁹
X4RPP Round Pole Plate for 4" Poles	379967CLR	DFK480 Double Fusing (480V)	DFK480 ⁹
X5RPP Round Pole Plate for 5" Poles	379968CLR	FK347 Single Fusing (347V)	FK347 ⁹
PC120 Photocell for use with PCR option (120V)	122514 ⁸	PMOS120 120V Pole-Mount Occupancy Sensor	518030CLR ¹⁰
PC208-277 Photocell for use with PCR option (208V, 240V, 277V)	122515 ⁸	PMOS208/240 208V, 240V Pole-Mount Occupancy Sensor	534239CLR ¹⁰
PC347 Photocell for use with PCR option (347V)	159516 ⁸	PMOS277 277V Pole-Mount Occupancy Sensor	518029CLR ¹⁰
PC480 Photocell for use with PCR option (480V)	122518 ⁹	PMOS480 480V Pole-Mount Occupancy Sensor	534240CLR ¹⁰

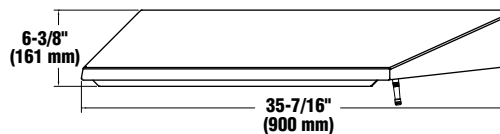
FOOTNOTES:

- For wireless controls information and accessories, see Controls section.
- Requires a SiteManager and override switch. Not compatible with BLS or IMS option.
- Not compatible with IMS or BLS option.
- Not compatible with wireless controls system, DIM or IMS option.
- Not compatible with wireless controls system, DIM or BLS option.
- Photocell must be ordered separately. See Accessories.
- House Side Shields add to fixture EPA. Consult factory.
- Factory installed PCR option required. See Options.
- Fusing must be located in the hand hole of pole.
- To be used in conjunction with any of the PCM/GCM wireless controls systems in fixture. Consult factory.

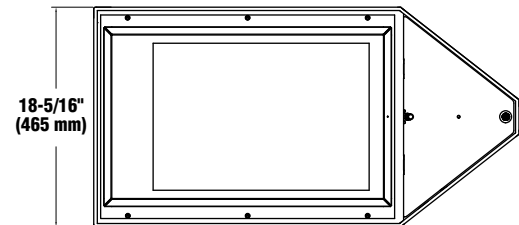
DIMENSIONS (shown with PCM/GCM controls)



Front View

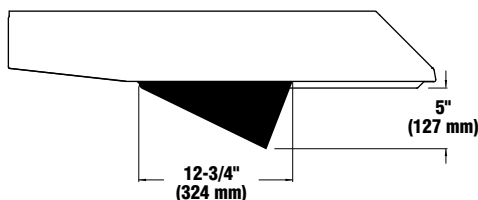


Side View



Bottom View

XAMU HSS - House Side Shield



Project Name _____ Fixture Type _____
Catalog # _____

10/19/16
© 2016
LSI INDUSTRIES INC.

LED AREA LIGHTS - AEROMAX™ MEDIUM (XAMU)

BUG LISTING

XAMU - Type 3

Drive Current	Color Temp.*	Lumens	Watts	LER	BUG Rating
HO	CW	16,518	177	93	B2-U0-G2
	CW-HSS	10,690	179	60	B1-U0-G2
	NW	15,024	186	81	B2-U0-G2
	NW-HSS	9823	188	52	B1-U0-G2
SS	CW	13,460	136	99	B2-U0-G2
	CW-HSS	8711	136	64	B1-U0-G2
	NW	12,446	142	88	B2-U0-G2
	NW-HSS	8137	142	57	B1-U0-G2

XAMU - Type 5

Drive Current	Color Temp.*	Lumens	Watts	LER	BUG Rating
HO	CW	14,788	175	85	B3-U0-G2
	NW	12,543	176	71	B3-U0-G2
SS	CW	12,132	135	90	B3-U0-G2
	NW	11,224	142	79	B3-U0-G2

XAMU - Type FT

Drive Current	Color Temp.*	Lumens	Watts	LER	BUG Rating
HO	CW	17,332	176	98	B1-U0-G3
	CW-HSS	12,527	179	70	B1-U0-G2
	NW	15,787	176	90	B1-U0-G3
	NW-HSS	11,496	190	61	B1-U0-G2
SS	CW	14,088	136	104	B1-U0-G2
	CW-HSS	10,181	136	75	B1-U0-G2
	NW	13,182	142	93	B1-U0-G2
	NW-HSS	9599	142	68	B1-U0-G2

* Color Temperature: WW-3000K, NW-4000K, CW-5000K



Project Name _____ Fixture Type _____
 Catalog # _____

10/19/16
 © 2016
 LSI INDUSTRIES INC.



PROHEALTH CARE

**WAUKESHA MEMORIAL
HOSPITAL HEART AND
VASCULAR CENTER**

725 American Avenue
Waukesha, WI 53188



eppstein uhen : architects

**PRELIM PLAN COMMISSION
SUBMISSION**

04/26/2017

PROJECT NUMBER: 16375

ABBREVIATIONS

A air condition	C (continued) counter	F female	I ID inside diameter	P PL plastic laminate	T TAM time & materials
AC air condition	CL centerline	F filler	INSUL insulation	PLYWD plywood	TEMP temperature
ACT acoustical ceiling tile	CLG ceiling	FA fire alarm	INT intarior	PAL panel	TER terrace
ADOL additional	CLJ crier	FA fluid applied	J JS	PREFAB prefabricated	TERB terrazzo base
ADOM addendum	CM construction management	FAB fabric	J JS	PREFIN prefinished	TFF top of finish floor
ADJ adjustable	CMU concrete masonry unit	FD floor drain	J JS	PTI paint, painted	TIBSD top of
AFC above finished	COL column	FE fire extinguisher	LAM laminate	PT partition	TOB top of beam
AFF above finished	CONC concrete	FEC fire extinguisher cabinet	LAV lavatory	PTI paint, painted	TOC top of concrete
AFG above finished	CORR corridor	FHC fire hose cabinet	LI live load	PTN partition	TOU top of joist
AGF above finished	CONT continuous	FM floor	LT	QTY quantity	TOG topography
AFS above finished	CPT carpet	FM floor mat	LT	QTY quantity	TOS top of slab, top of steel
ALT alternate	CSWK casework	FO finished opening	MAX maximum	QTY quantity	TYP typical
ALUM aluminum	CW cold water	FP fire protection	MCM modular carpet tile	UN unless noted otherwise	
APD approved	CTS ceramic tile base	FP fireproof	MCR mechanical		
APT apartment	DEMO demolition	FR fireproof	MFR manufacturer		
AP acoustic panel	DEPT department	FT fire treated, feet, foot	MGR micro		
ASC above suspended ceiling	DF drinking fountain	FTG flooring	MIN minimum		
	DA diameter		MIS miscellaneous		
	DP decorative panel		MO masonry opening		
	DR door		MS mop sink		
	DR FR door frame		MTL metal		
	DTL detail				
	DS downsout				
	DW dishwasher				
	DWG drawing				
	E east				
	E exterior insulation				
	E & finish system				
	EL elevation				
	EL expansion joint				
	ELEC electric, electrical				
	ELEV elevator				
	EP epoxy				
	EPSP expanded polystyrene board				
	EQ equal				
	EQ corner guard				
	EQ casting-in-place				
	EQ existing to remain				
	EQ existing				
	EQ expand, expansion				
	EQ exterior				

PROJECT TEAM

ARCHITECTURAL EPPSTEIN UHEN ARCHITECTS, INC.

333 East Chicago Street
Milwaukee, WI 53202
Phone: (414) 271-5350
www.eua.com

PROJECT CONTACT: Tony Breittow
DIRECT PHONE: (414) 291-8171
EMAIL ADDRESS: tonyb@eua.com

STRUCTURAL GRAEF-USA, INC

125 South 84th Street, Suite 401
Milwaukee, WI 53214
PHONE: (414) 259-1500

PROJECT CONTACT: Daniel Kilbert, PE
DIRECT PHONE: (414) 266-9148
EMAIL ADDRESS: dan.kilbert@graef-usa.com

LANDSCAPE GRAEF-USA, INC

125 South 84th Street, Suite 401
Milwaukee, WI 53214
PHONE: (414) 259-1500

PROJECT CONTACT: Joseph Pepitone Jr.
DIRECT PHONE: (414) 266-9039
EMAIL ADDRESS: joe.pepitone@graef-usa.com

CIVIL GRAEF-USA, INC

125 South 84th Street, Suite 401
Milwaukee, WI 53214
PHONE: (414) 259-1500

PROJECT CONTACT: Steven Fisco, PE
DIRECT PHONE: (414) 266-9168
EMAIL ADDRESS: steven.fisco@graef-usa.com

ELECTRICAL RTM ENGINEERING CONSULTANTS, LLC

316 N. Milwaukee Street
Milwaukee, WI 53202
PHONE: (414) 930-1703
FAX: (414) 273-1437

PROJECT CONTACT: Tim Larson
DIRECT PHONE: (414) 930-1703
EMAIL ADDRESS: timothy.larson@rtmassociates.com

PLUMBING RTM ENGINEERING CONSULTANTS, LLC

316 N. Milwaukee Street
Milwaukee, WI 53202
PHONE: (414) 930-1715
FAX: (262) 547-0817

PROJECT CONTACT: Steven Skattebo
DIRECT PHONE: (414) 930-1715
EMAIL ADDRESS: steven.skattebo@rtmassociates.com

MECHANICAL PEARSON ENGINEERING, LLC

14 Ellis Potter Court
Madison, WI 53711
PHONE: (608) 274-3339
FAX: (608) 274-0373

PROJECT CONTACT: Jeremy Bartell
DIRECT PHONE: (608) 274-3339
EMAIL ADDRESS: jeremy@pearsonengineering.com

OWNER PROHEALTH CARE

725 American Avenue
Waukesha, WI 53188
PHONE: (262) 928-5657

PROJECT CONTACT: John McGinnis, Dir of Facilities
DIRECT PHONE: (262) 928-5657
EMAIL ADDRESS: john.mcginnis@phci.org

SHEET INDEX

G000	INDEX
C300	PRELIMINARY SITE LAYOUT, GRADING, AND UTILITY PLAN
L100	PRELIMINARY SITE LANDSCAPE PLAN
DS100	PRELIMINARY SITE PLAN
DO100	SCHEMATIC FLOOR PLAN
DE200	DESIGN EXTERIOR ELEVATIONS
DE201	DESIGN EXTERIOR ELEVATIONS



eppstein uhen : architects

milwaukee 333 East Chicago Street
Milwaukee, Wisconsin 53202
telephone 414.271.5350
madison 309 West Johnson Street, Suite 202
Madison, Wisconsin 53703
telephone 608.442.5350

PROJECT INFORMATION

WMH HEART AND VASCULAR CENTER

725 American Avenue
Waukesha, WI 53188

ISSUANCE AND REVISIONS

PRELIM PLAN COMMISSION SUBMISSION

#	DATE	DESCRIPTION
---	------	-------------

KEY PLAN

SHEET INFORMATION

PROGRESS DOCUMENTS NOT FOR CONSTRUCTION
These documents reflect progress and intent and may be subject to change, including additional detail. These are not final construction documents and should not be used for final bidding or construction-related purposes.

PROJECT MANAGER	TB
PROJECT NUMBER	16375
DATE	04/26/2017

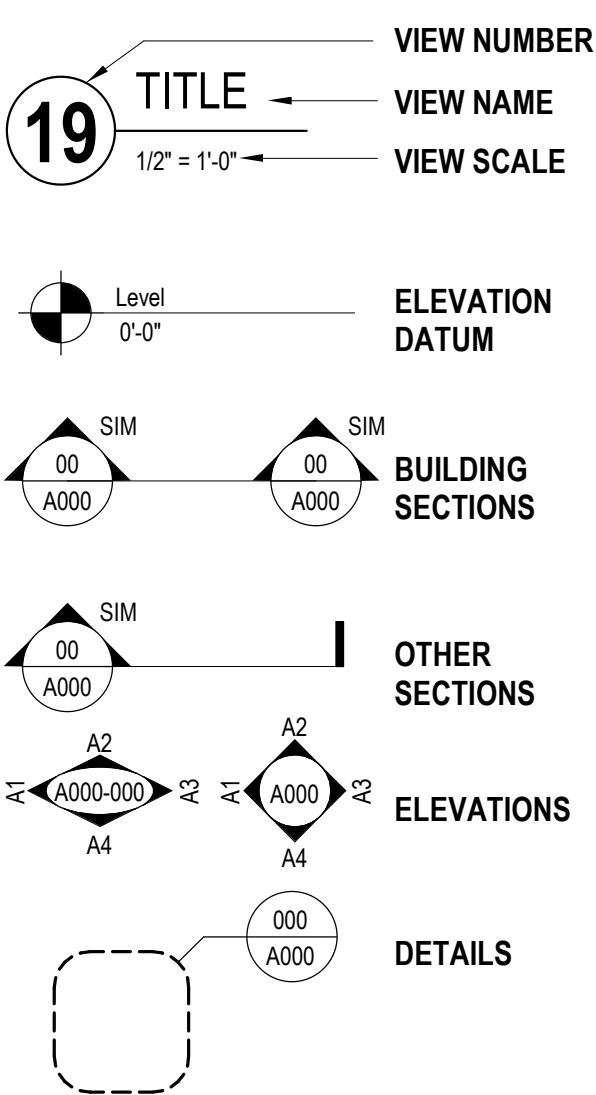
INDEX

G000

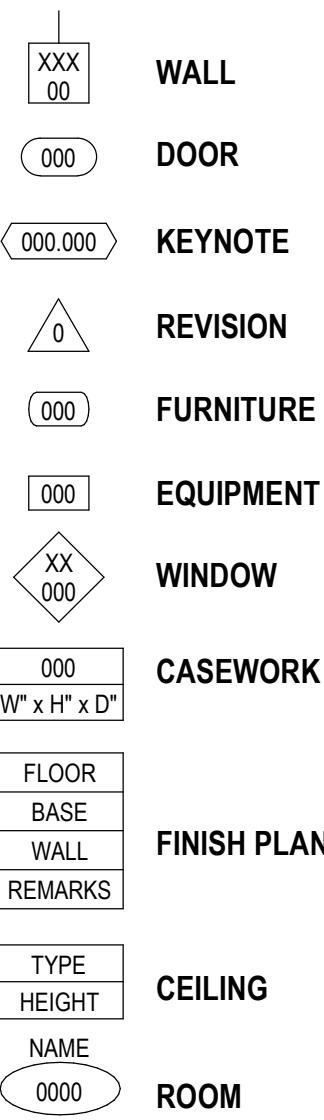
© Eppstein Uhen Architects, Inc.

SYMBOL LEGEND

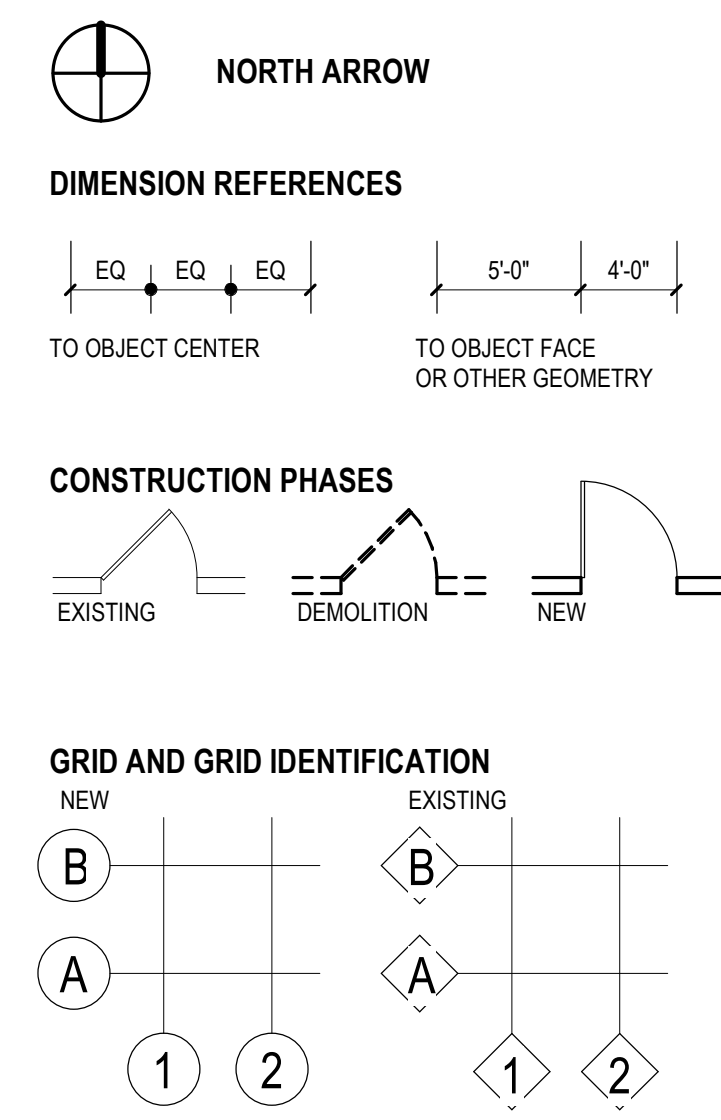
CALLOUTS



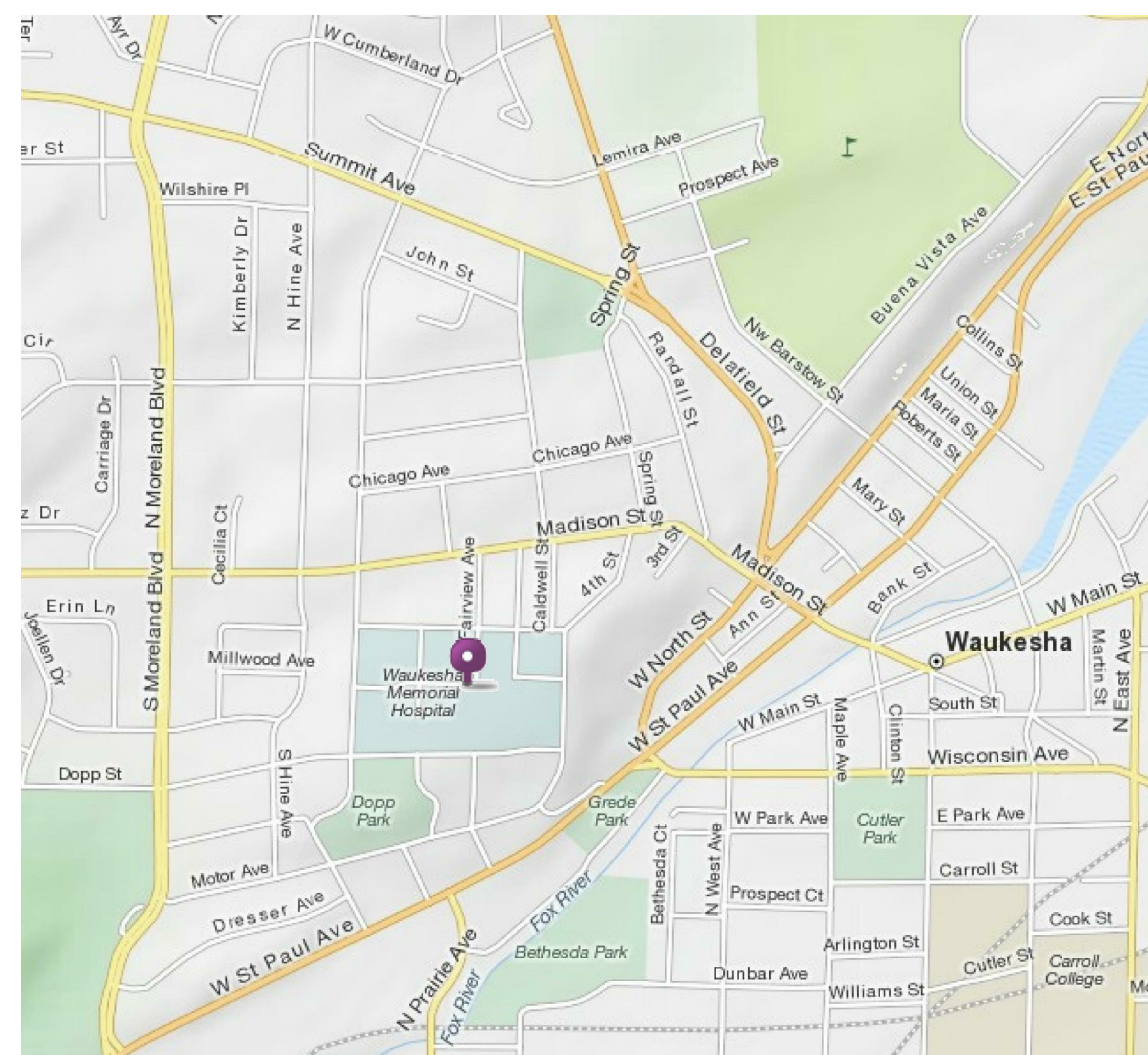
TAGS



GRAPHICS



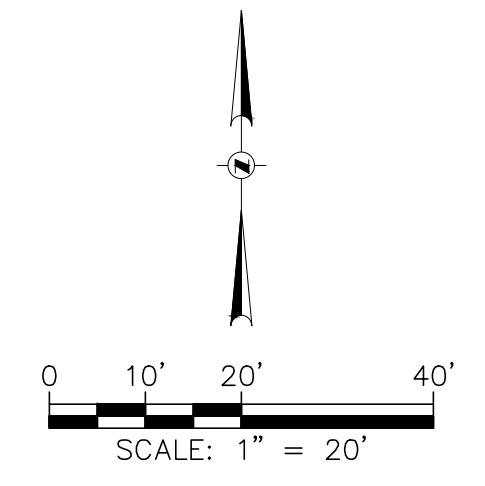
VICINITY MAP





eppstein uhen : architects

milwaukee 333 East Chicago Street
Milwaukee, Wisconsin 53202
telephone 414.271.5350
madison 309 West Johnson Street, Suite 202
Madison, Wisconsin 53703
telephone 608.442.5350



LEGEND

- PROPOSED ASPHALT PAVEMENT
- PROPOSED CONCRETE SIDEWALK
- PROPOSED CONCRETE PAVEMENT
- PROPOSED CONCRETE CURB AND GUTTER
- EXISTING CONTOUR
- PROPOSED CONTOUR
- ELEVATION AT TOP OF RETAINING WALL
- ELEVATION AT BOTTOM OF RETAINING WALL
- PROPOSED STORM SEWER
- PROPOSED SANITARY SEWER
- PROPOSED WATER MAIN
- PROPOSED CATCH BASIN
- PROPOSED MANHOLE

GENERAL NOTES

1. THE BASE SURVEY WAS PREPARED BY JAHNKE & JAHNKE ASSOCIATES, INC. EXISTING CONDITIONS HAVE CHANGED SINCE THE INITIAL JAHNKE & JAHNKE SURVEY. ADDITIONAL SYMBOLS AND FEATURES HAVE BEEN ADDED TO REPRESENT APPROXIMATE EXISTING CONDITIONS. ALL UNDERGROUND UTILITIES AND STRUCTURES HAVE BEEN SHOWN TO A REASONABLE DEGREE OF ACCURACY AND IT SHALL BE THE CONTRACTOR'S RESPONSIBILITY TO VERIFY THEIR EXACT LOCATION AND TO AVOID DAMAGE THERETO.
2. REFER TO JAHNKE & JAHNKE ASSOCIATES, INC. SURVEY FOR BENCHMARKS, DATUM, AND TOPOGRAPHIC ELEMENTS.
3. CONTRACTOR SHALL VERIFY LOCATION OF WORK AND REPORT ANY DISCREPANCIES TO THE ENGINEER PRIOR TO COMMENCING WORK.

PARKING SUMMARY

NUMBER OF STANDARD PARKING STALLS: 101
 NUMBER OF ACCESSIBLE PARKING STALLS: 25
 TOTAL NUMBER OF PARKING STALLS: 126

STORM WATER MANAGEMENT NOTES

1. WAUKESHA MEMORIAL HOSPITAL AND CITY OF WAUKESHA ARE CURRENTLY ENGAGED IN DISCUSSIONS FOR THE IMPLEMENTATION OF LARGER SCALE STORM WATER IMPROVEMENTS TO REDUCE DOWNSTREAM FLOODING.
2. THE PROPOSED PROJECT MEETS THE WATER QUALITY REQUIREMENTS OF CH.32.10 BY THE CREATION OF 0.20 ACRES OF ADDITIONAL PERVIOUS SURFACE. THIS ADDITIONAL PERVIOUS SURFACE MAINTAINS THE PEAK FLOW RATES FOR THE 2, 10, AND 100-YEAR EVENTS. THIS ADDED PERVIOUS SURFACE ALSO OVERCOMPENSATES FOR THE 0.05 ACRES OF ADDED IMPERVIOUS SURFACE CREATED WITH THE CENTRAL UTILITY PLANT PROJECT.

PROJECT INFORMATION

WMH HEART AND VASCULAR

725 American Avenue
Waukesha, WI 53188

ISSUANCE AND REVISIONS

PRELIMINARY PLANNING
COMMISSION SUBMISSION

#	DATE	DESCRIPTION

KEY PLAN

SHEET INFORMATION

PROGRESS DOCUMENTS
NOT FOR CONSTRUCTION

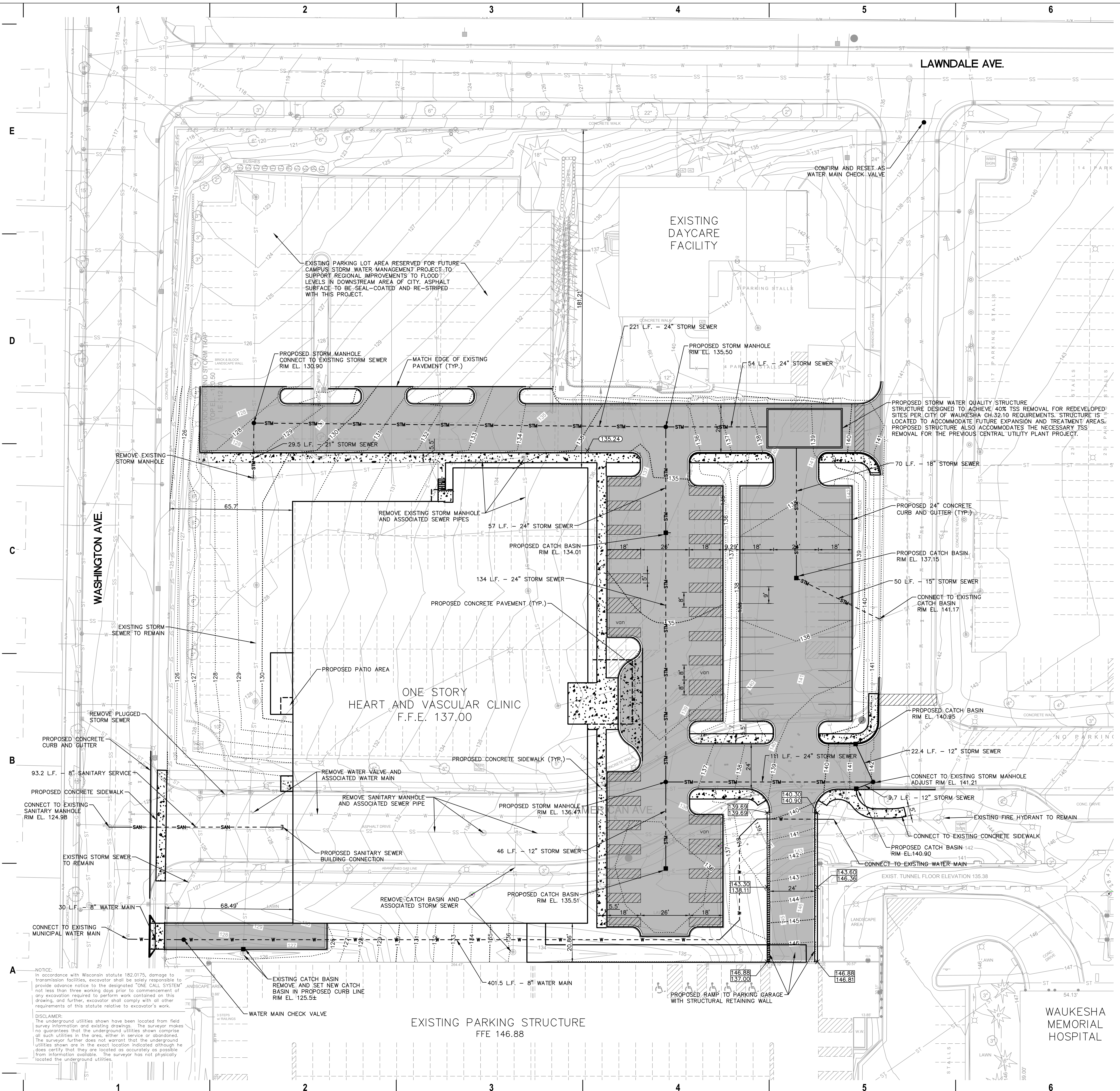
These documents reflect progress and intent and may be subject to change, including additional detail. These are not final construction documents and should not be used for final bidding or construction-related purposes.

PROJECT MANAGER TB
 PROJECT NUMBER 16375
 DATE 04/26/2017

SITE LAYOUT, GRADING,
AND UTILITY PLAN

C300

© Eppstein Uhen Architects, Inc.



NOTICE:
 In accordance with Wisconsin statute 182.0175, damage to transmission facilities, excavator shall be solely responsible to provide advance notice to the designated "ONE CALL SYSTEM" not less than three working days prior to commencement of any excavation required to perform work contained on this drawing, and further, excavator shall comply with all other requirements of this statute relative to excavator's work.

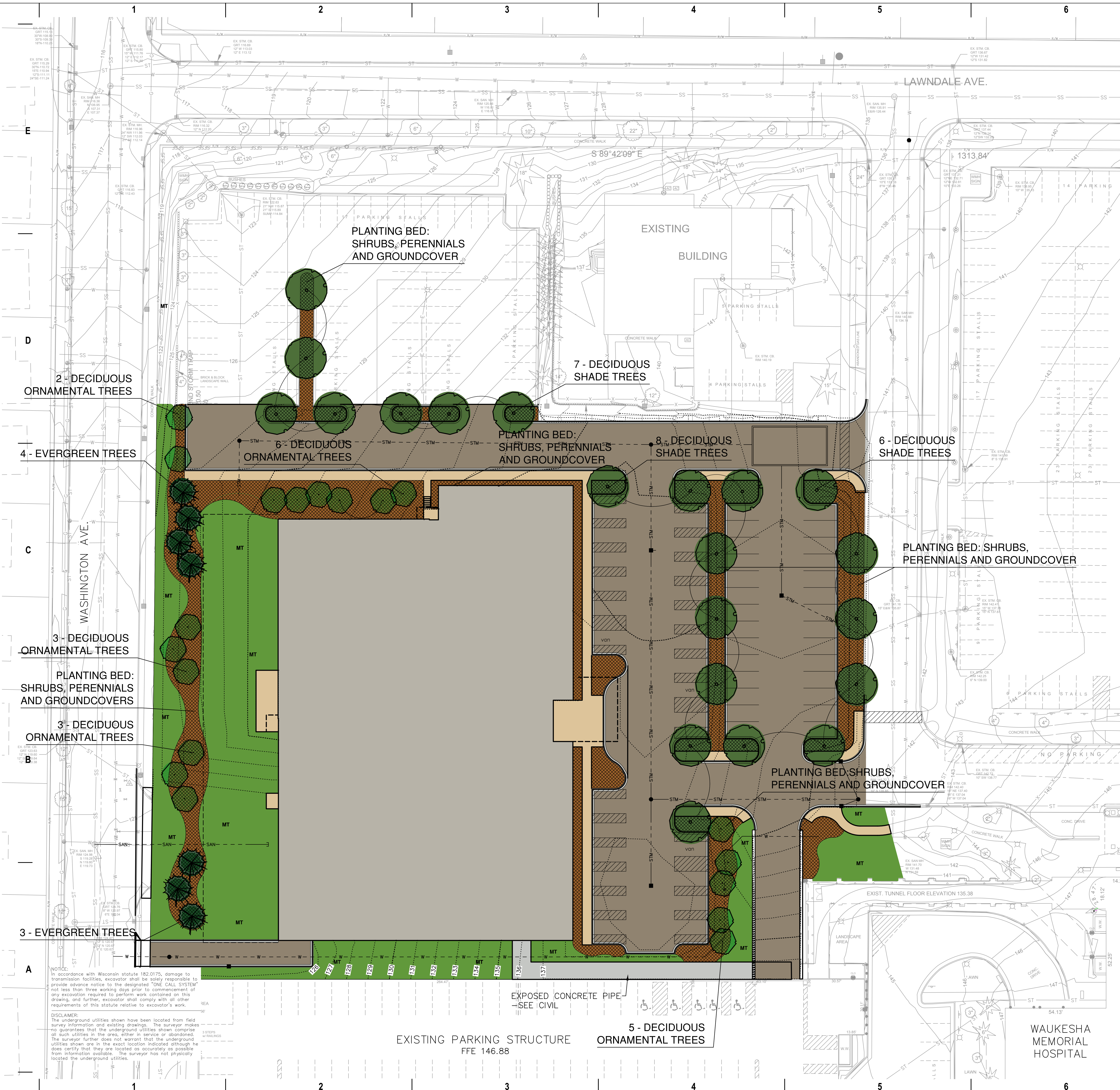
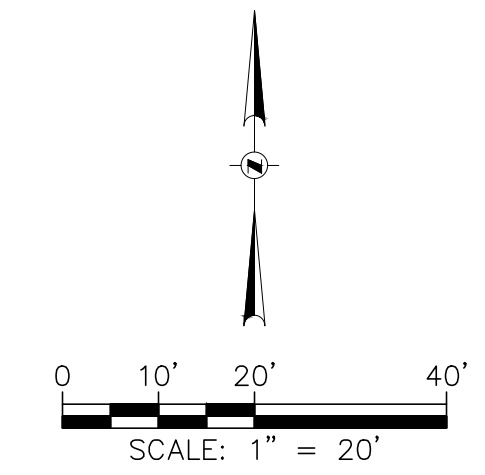
DISCLAIMER:
 The underground utilities shown have been located from field survey information and existing drawings. The surveyor makes no guarantee that the underground utilities shown comprise all such utilities in the area, either in service or abandoned. The surveyor further does not warrant that the underground utilities shown are in the exact location indicated although he does certify that they are located as accurately as possible from information available. The surveyor has not physically located the underground utilities.

EXISTING PARKING STRUCTURE
FFE 146.88

ONE STORY
HEART AND VASCULAR CLINIC
F.F.E. 137.00

EXISTING
DAYCARE
FACILITY

WAUKESHA
MEMORIAL
HOSPITAL



LANDSCAPE LEGEND

- LIMIT OF LANDSCAPE CONSTRUCTION
- PROPOSED ALUMINUM EDGER
- EXISTING TREES TO REMAIN
- EXISTING DECIDUOUS SHRUB TO REMAIN
- EXISTING EVERGREEN SHRUB TO REMAIN
- SHADE TREE
- ORNAMENTAL TREE
- EVERGREEN TREE
- DECIDUOUS SHRUB
- EVERGREEN SHRUB
- ORNAMENTAL GRASS
- PERENNIALS
- NO MOW TURF SEED MIX
- MT MANICURED TURF - SOD or SEED
- BM SHREDDED BARK MULCH

PROJECT INFORMATION

WMH HEART AND VASCULAR

725 American Avenue
 Waukesha, WI 53188

ISSUANCE AND REVISIONS

PRELIMINARY PLANNING
 COMMISSION SUBMISSION

#	DATE	DESCRIPTION
---	------	-------------

GENERAL NOTES

- THE BASE SURVEY WAS PREPARED BY JAHNKE & JAHNKE ASSOCIATES, INC. EXISTING CONDITIONS HAVE CHANGED SINCE THE INITIAL JAHNKE & JAHNKE SURVEY. ADDITIONAL SYMBOLS AND FEATURES HAVE BEEN ADDED TO REPRESENT APPROXIMATE EXISTING CONDITIONS. ALL UNDERGROUND UTILITIES AND STRUCTURES HAVE BEEN SHOWN TO A REASONABLE DEGREE OF ACCURACY AND IT SHALL BE THE CONTRACTOR'S RESPONSIBILITY TO VERIFY THEIR EXACT LOCATION AND TO AVOID DAMAGE THERETO.
- REFER TO JAHNKE & JAHNKE ASSOCIATES, INC. SURVEY FOR BENCHMARKS, DATUM, AND TOPOGRAPHIC ELEMENTS.
- CONTRACTOR SHALL VERIFY LOCATION OF WORK AND REPORT ANY DISCREPANCIES TO THE ENGINEER PRIOR TO COMMENCING WORK.

KEY PLAN

SHEET INFORMATION

**PROGRESS DOCUMENTS
 NOT FOR CONSTRUCTION**

These documents reflect progress and intent and may be subject to change, including additional detail. These are not final construction documents and should not be used for final bidding or construction-related purposes.

PROJECT MANAGER	TB
PROJECT NUMBER	16375
DATE	04/26/2017

Site Landscape Plan

L100

X:\M\2016\20160295\CAD\Site\dwg\00_L100_Landscape_Plan_295-COLOR 3/29/2017 10:42 AM

NOTICE:
 In accordance with Wisconsin statute 182.0175, damage to transmission facilities, excavator shall be solely responsible to provide advance notice to the designated "ONE CALL SYSTEM" not less than three working days prior to commencement of any excavation required to perform work contained on this drawing, and further, excavator shall comply with all other requirements of this statute relative to excavator's work.

DISCLAIMER:
 The underground utilities shown have been located from field survey information and existing drawings. The surveyor makes no guarantee that the underground utilities shown comprise all such utilities in the area, either in service or abandoned. The surveyor further does not warrant that the underground utilities shown are in the exact location indicated although he does certify that they are located as accurately as possible from information available. The surveyor has not physically located the underground utilities.

EXISTING PARKING STRUCTURE
 FFE 146.88

EXPOSED CONCRETE PIPE
 -SEE CIVIL

5 - DECIDUOUS ORNAMENTAL TREES

WAUKESHA MEMORIAL HOSPITAL

2 - DECIDUOUS ORNAMENTAL TREES

4 - EVERGREEN TREES

3 - DECIDUOUS ORNAMENTAL TREES

3 - DECIDUOUS ORNAMENTAL TREES

3 - EVERGREEN TREES

PLANTING BED:
 SHRUBS, PERENNIALS
 AND GROUNDCOVER

PLANTING BED:
 SHRUBS, PERENNIALS
 AND GROUNDCOVER

7 - DECIDUOUS SHADE TREES

8 - DECIDUOUS SHADE TREES

PLANTING BED: SHRUBS,
 PERENNIALS AND GROUNDCOVER

PLANTING BED: SHRUBS,
 PERENNIALS AND GROUNDCOVER

6 - DECIDUOUS SHADE TREES

PLANTING BED: SHRUBS,
 PERENNIALS AND GROUNDCOVER

6 - DECIDUOUS SHADE TREES



eppstein uhen : architects

milwaukee 333 East Chicago Street
Milwaukee, Wisconsin 53202
telephone 414.271.5350
madison 309 West Johnson Street, Suite 202
Madison, Wisconsin 53703
telephone 608.442.5350

PROJECT INFORMATION

WMH HEART AND VASCULAR CENTER

725 American Avenue
Waukesha, WI 53188

ISSUANCE AND REVISIONS

PRELIM PLAN COMMISSION SUBMISSION

#	DATE	DESCRIPTION

KEY PLAN

SHEET INFORMATION

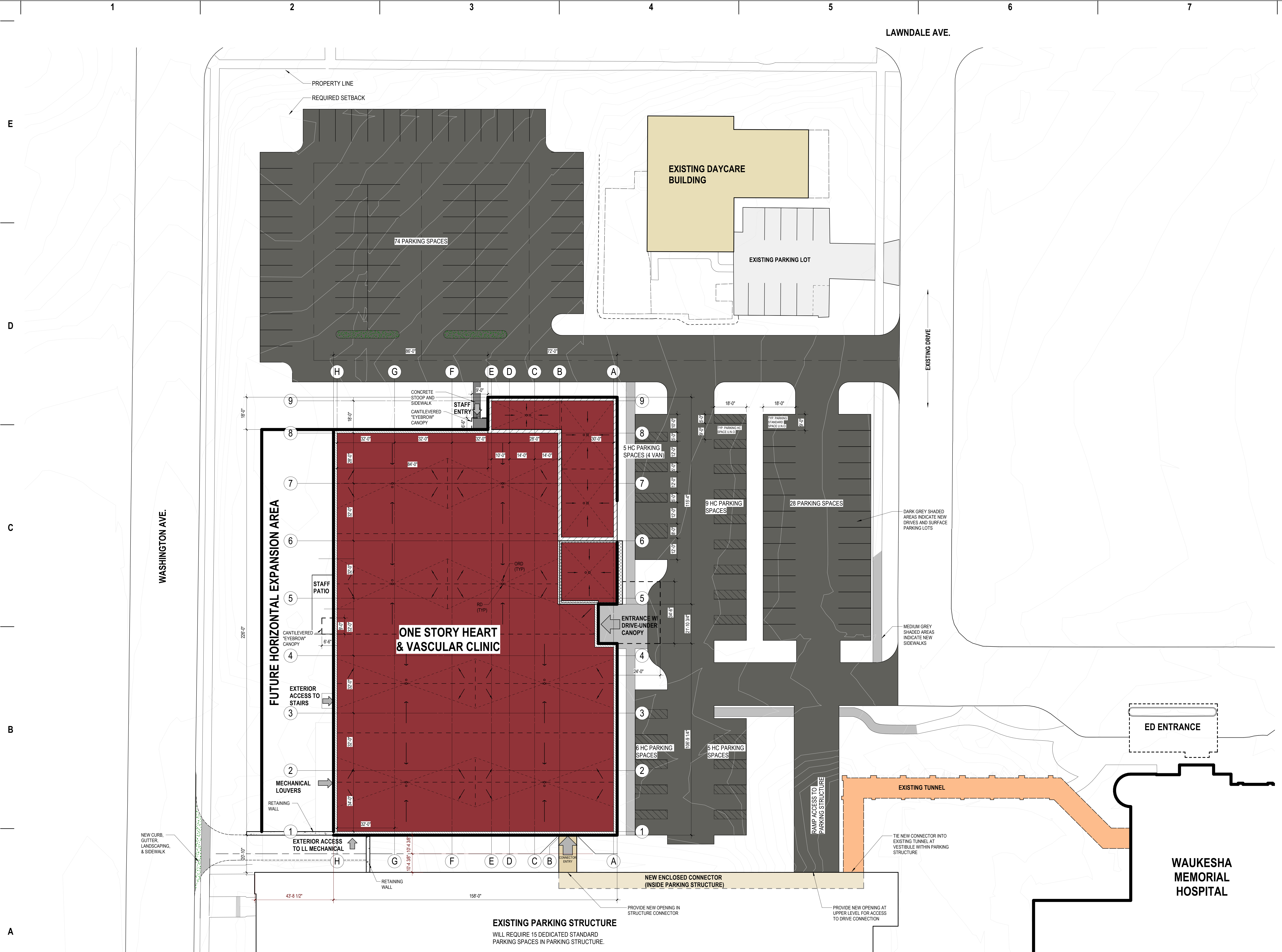
**PROGRESS DOCUMENTS
NOT FOR CONSTRUCTION**
These documents reflect progress and intent and may be subject to change, including additional detail. These are not final construction documents and should not be used for final bidding or construction-related purposes.

PROJECT MANAGER TB
PROJECT NUMBER 16375
DATE 04/26/2017

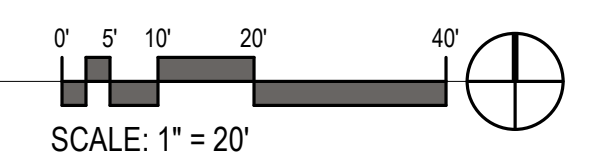
PRELIMINARY SITE PLAN

DS100

© Eppstein Uhen Architects, Inc.



A7 ARCHITECTURAL SITE PLAN
1" = 20'-0"





eppstein uhen : architects

milwaukee 333 East Chicago Street
Milwaukee, Wisconsin 53202
telephone 414.271.5350
madison 309 West Johnson Street, Suite 202
Madison, Wisconsin 53703
telephone 608.442.5350

PROJECT INFORMATION

WMH HEART AND
VASCULAR CENTER

725 American Avenue
Waukesha, WI 53188

ISSUANCE AND REVISIONS

PRELIM PLAN COMMISSION
SUBMISSION

#	DATE	DESCRIPTION
---	------	-------------

KEY PLAN

SHEET INFORMATION

**PROGRESS DOCUMENTS
NOT FOR CONSTRUCTION**
These documents reflect progress and intent and may be subject to change, including additional detail. These are not final construction documents and should not be used for final bidding or construction-related purposes.

PROJECT MANAGER TB
PROJECT NUMBER 16375
DATE 04/26/2017

SCHEMATIC FLOOR
PLAN

DO100

© Eppstein Uhen Architects, Inc.

E

D

C

B

A

E

D

C

B

A

1

2

3

4

5

6

7

STAFF
ENTRY

ADMINISTRATIVE OFFICES
3,326 SF

CARDIAC REHAB
6,519 SF

HSKP
164 SF

STAFF LOUNGE/
STORAGE
922 SF

MECHANICAL/UTILITIES/
STORAGE
1,018 SF

CLINIC
11,152 SF

VESTIBULE
268 SF

PATIENT ENTRY
FROM SURFACE LOT

PUBLIC TOILETS
395 SF

RECEPTION
649 SF

WAITING
2,010 SF

CVD
1,282 SF

CVD
342 SF

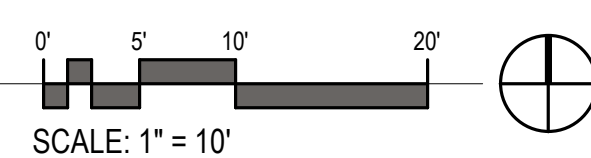
CONF & EDUCATION
1,010 SF

CVD
2,176 SF

CONNECTION TO EXISTING
TUNNEL TO HOSPITAL

PATIENT ENTRY FROM
PARKING STRUCTURE

A4 SCHEMATIC FLOOR PLAN
1" = 10'-0"



1

2

3

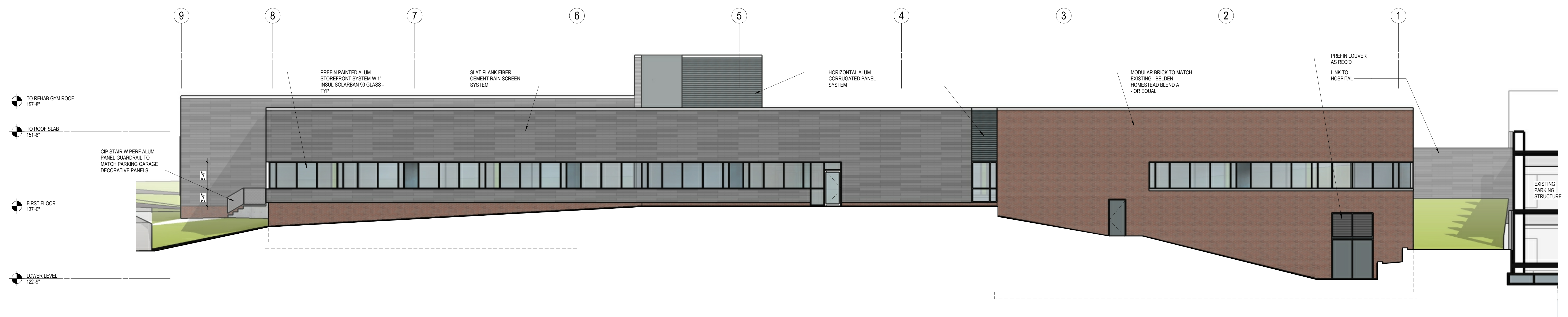
4

5

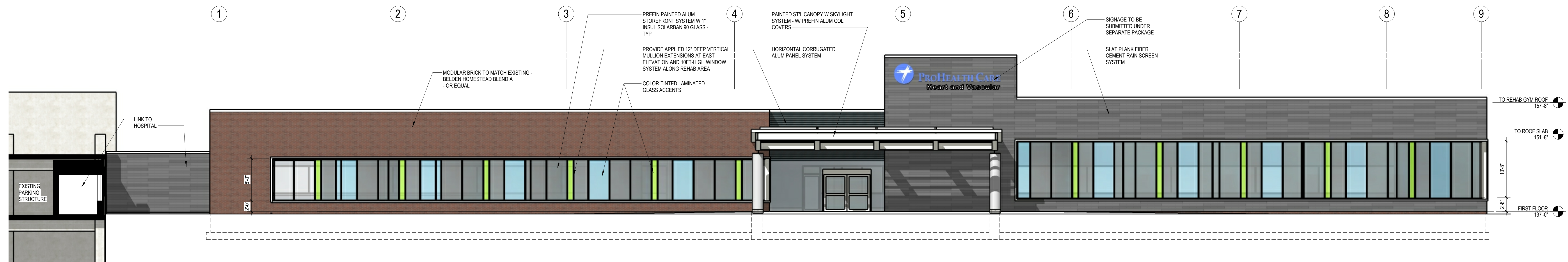
6

7

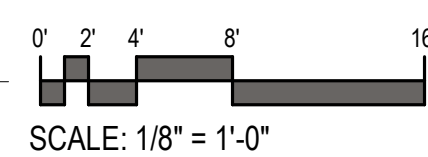
8



C1 West Elevation
1/8" = 1'-0"



A1 East Elevation
1/8" = 1'-0"



epstein uhen : architects

milwaukee 333 East Chicago Street
Milwaukee, Wisconsin 53202
telephone 414.271.5350

madison 309 West Johnson Street, Suite 202
Madison, Wisconsin 53703
telephone 608.442.5350

KEY PLAN



ISSUANCE AND REVISIONS

DATE	DESCRIPTION

**PROGRESS DOCUMENTS
NOT FOR CONSTRUCTION**

These documents reflect progress and intent and may be subject to change, including additional detail. These are not final construction documents and should not be used for final bidding or construction-related purposes.

PROJECT INFORMATION

WMH HEART AND VASCULAR CENTER

725 American Avenue
Waukesha, WI 53188

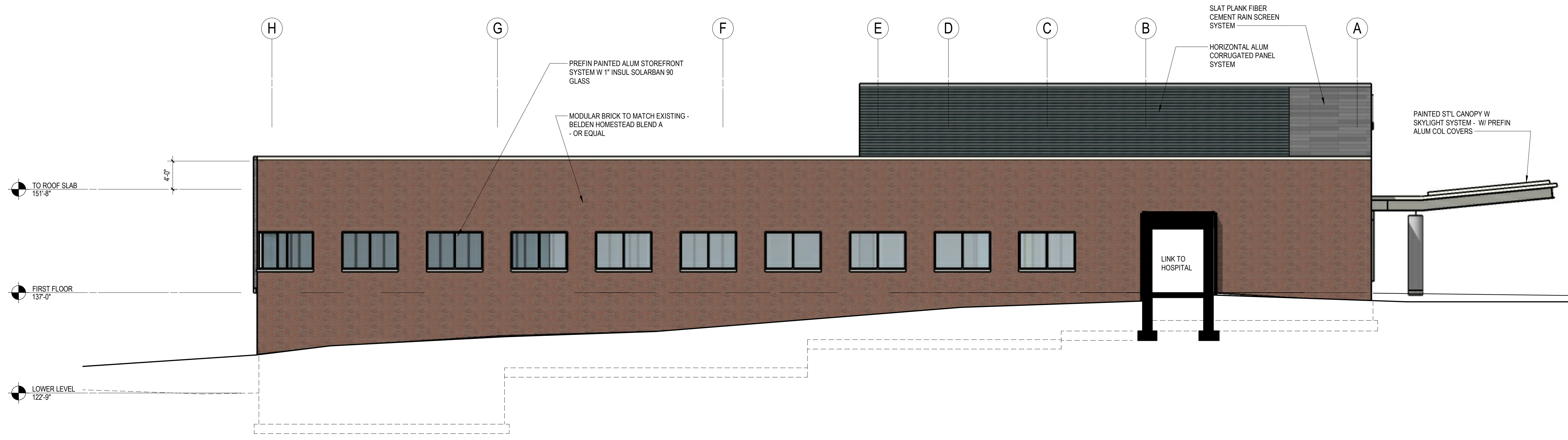
PROJECT NUMBER: 16375
PROJECT MANAGER: TB

SHEET INFORMATION

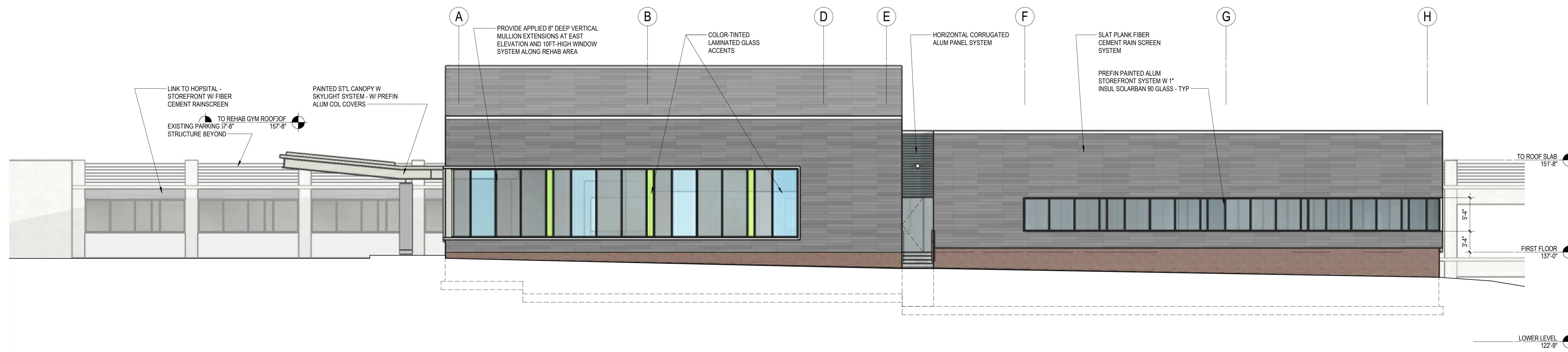
SHEET NAME:
SHEET NUMBER:

DESIGN EXTERIOR
ELEVATIONS
DE200

© Epstein Uhen Architects, Inc.



C1 South Elevation
1/8" = 1'-0"



A1 North Elevation
1/8" = 1'-0"

SCALE: 1/8" = 1'-0"



eppstein uhen : architects

milwaukee 333 East Chicago Street
Milwaukee, Wisconsin 53202
telephone 414.271.5350

madison 309 West Johnson Street, Suite 202
Madison, Wisconsin 53703
telephone 608.442.5350

KEY PLAN

ISSUANCE AND REVISIONS

DATE	DESCRIPTION

**PROGRESS DOCUMENTS
NOT FOR CONSTRUCTION**

These documents reflect progress and intent and may be subject to change, including additional detail. These are not final construction documents and should not be used for final bidding or construction-related purposes.

PROJECT INFORMATION

WMH HEART AND VASCULAR CENTER

725 American Avenue
Waukesha, WI 53188

PROJECT NUMBER: 16375
PROJECT MANAGER: TB

SHEET INFORMATION

SHEET NAME:
SHEET NUMBER:

DESIGN EXTERIOR
ELEVATIONS
DE201