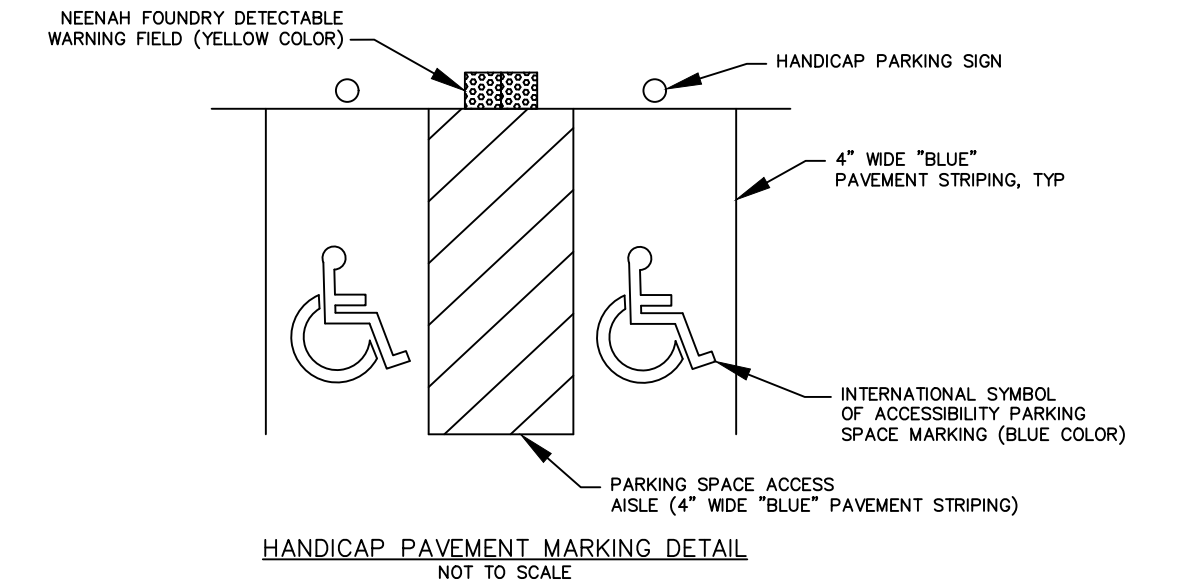
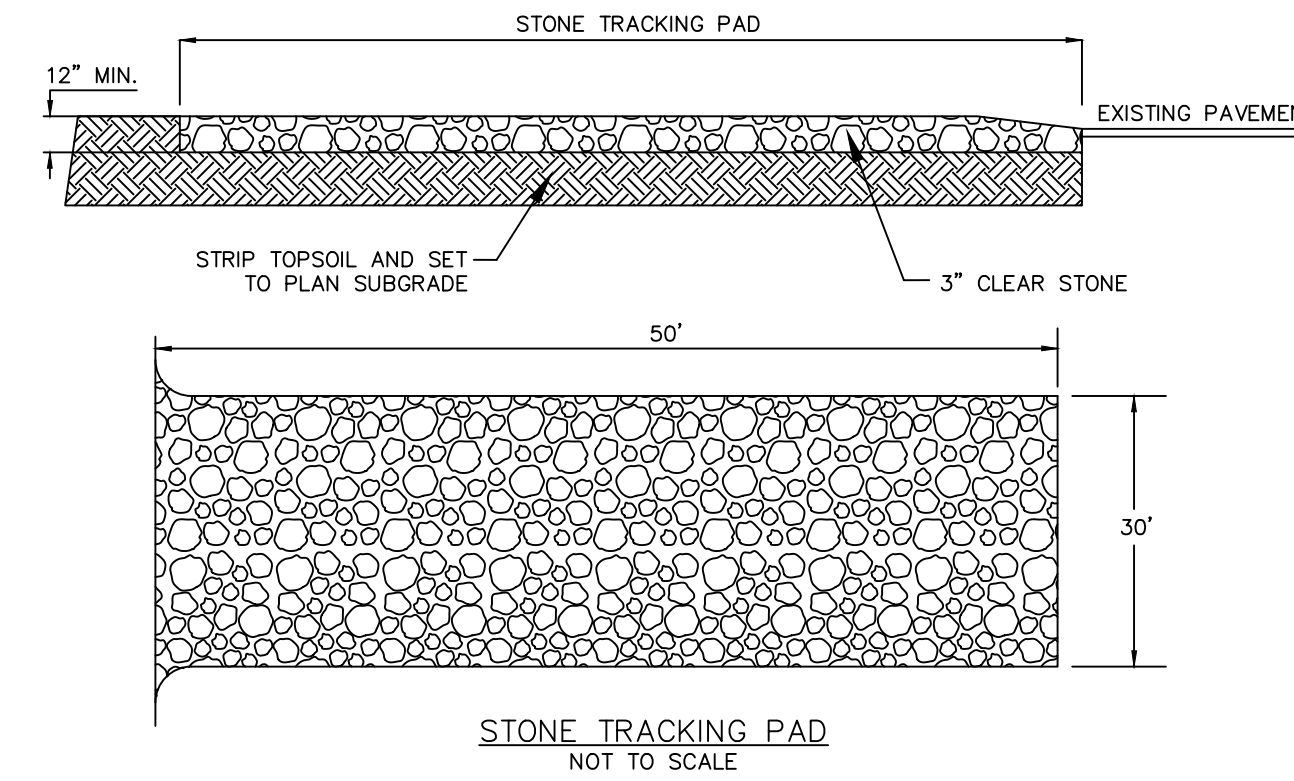
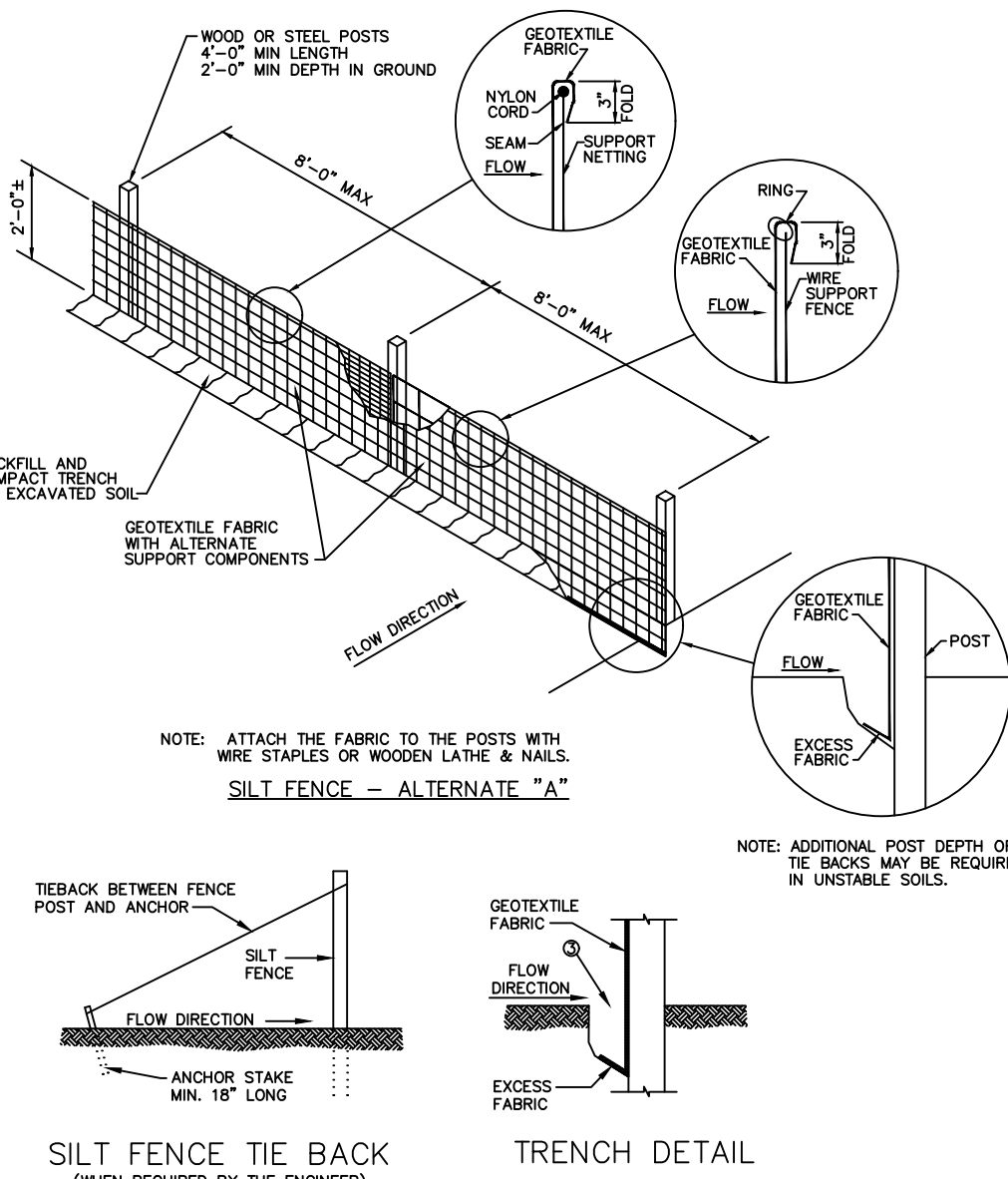
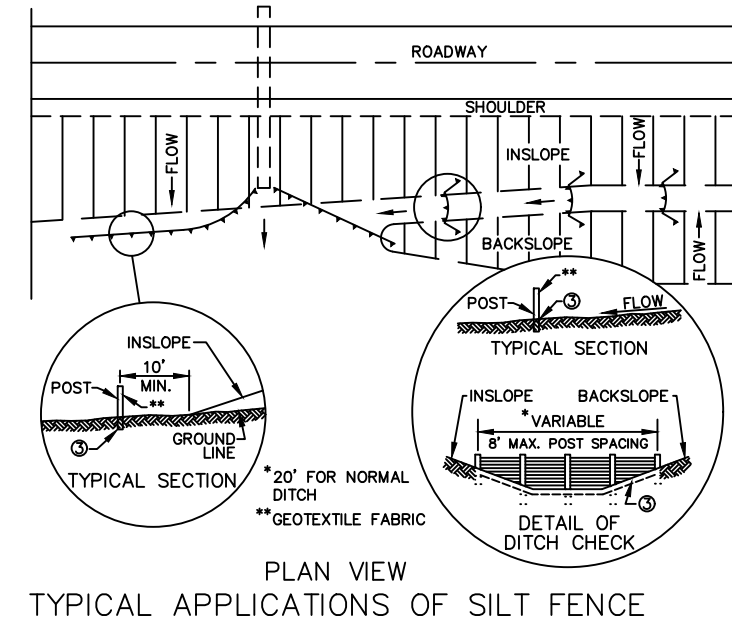
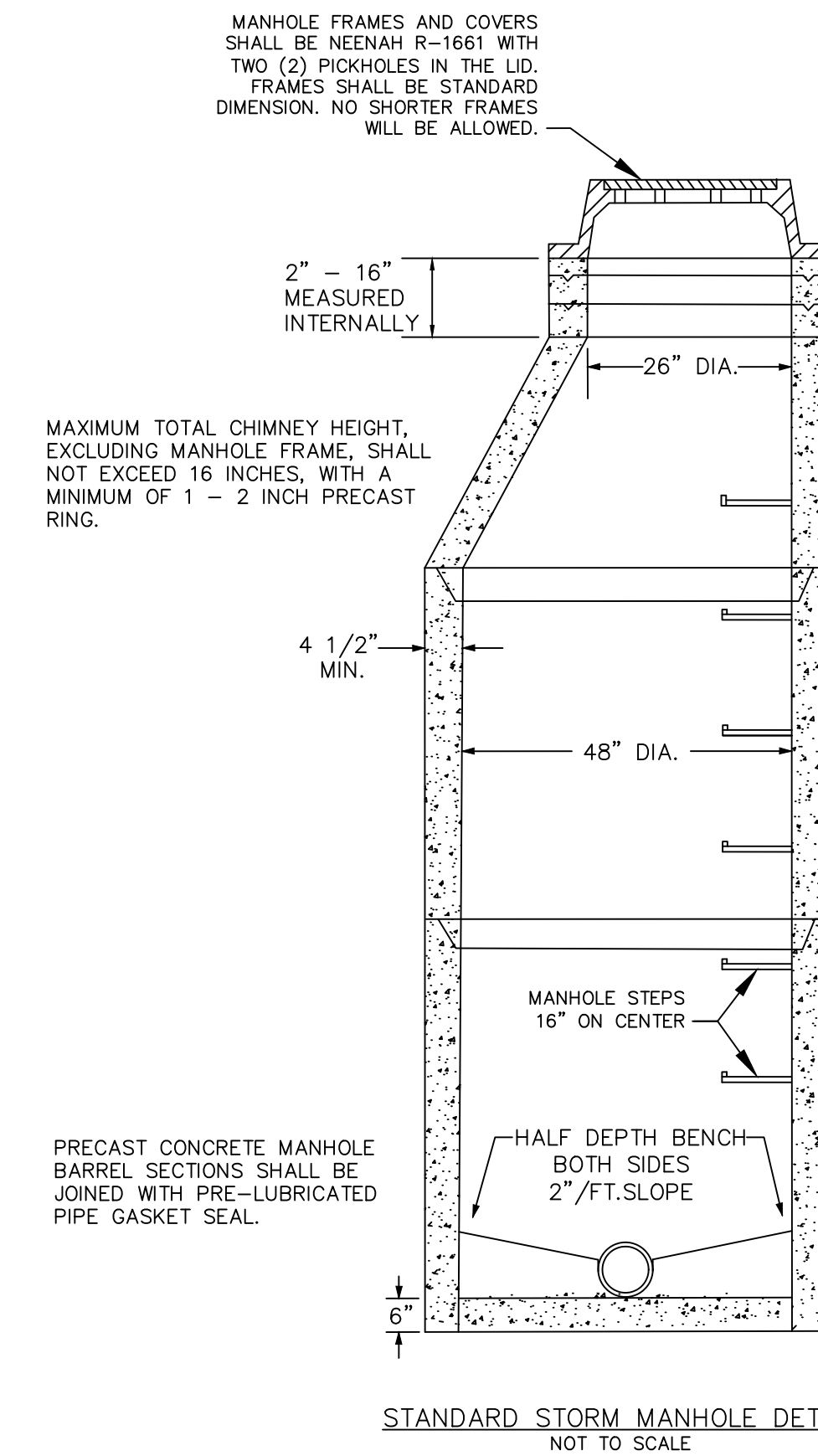
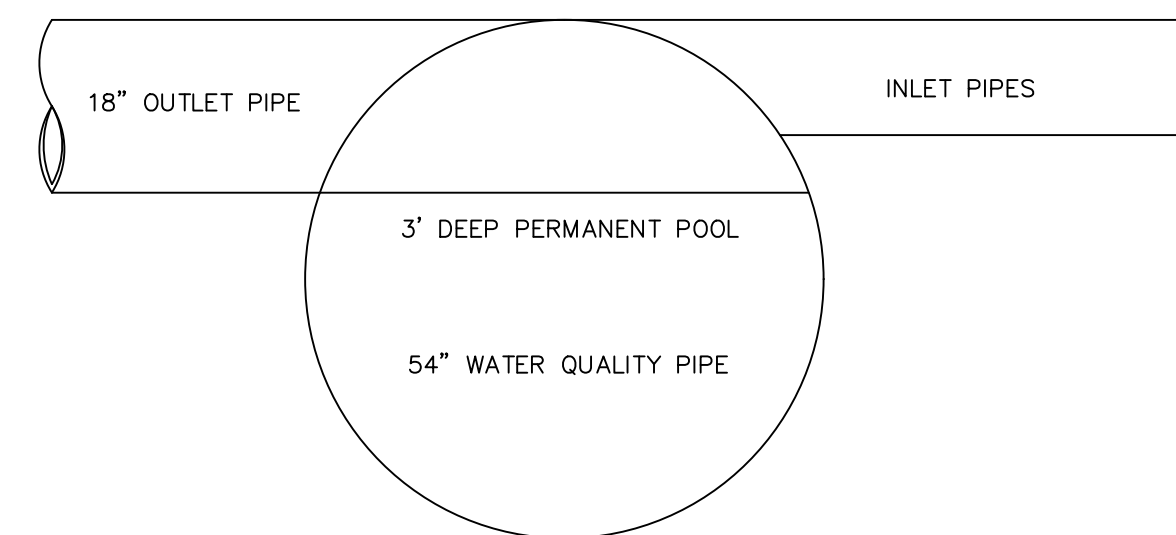
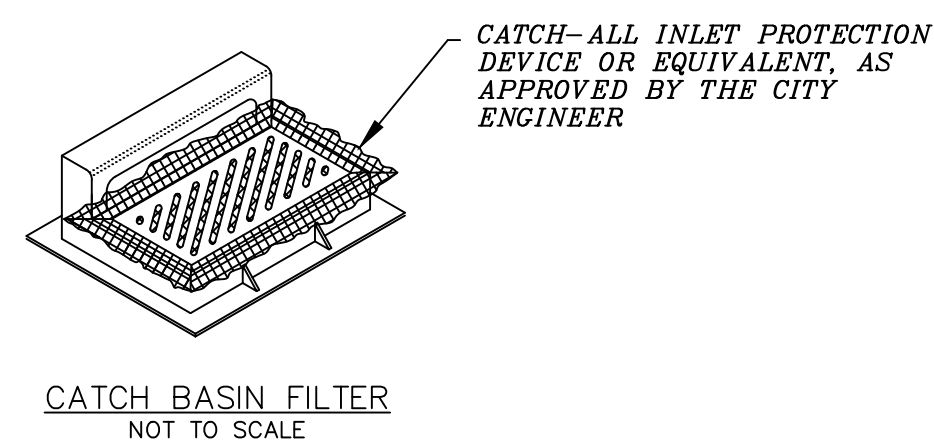
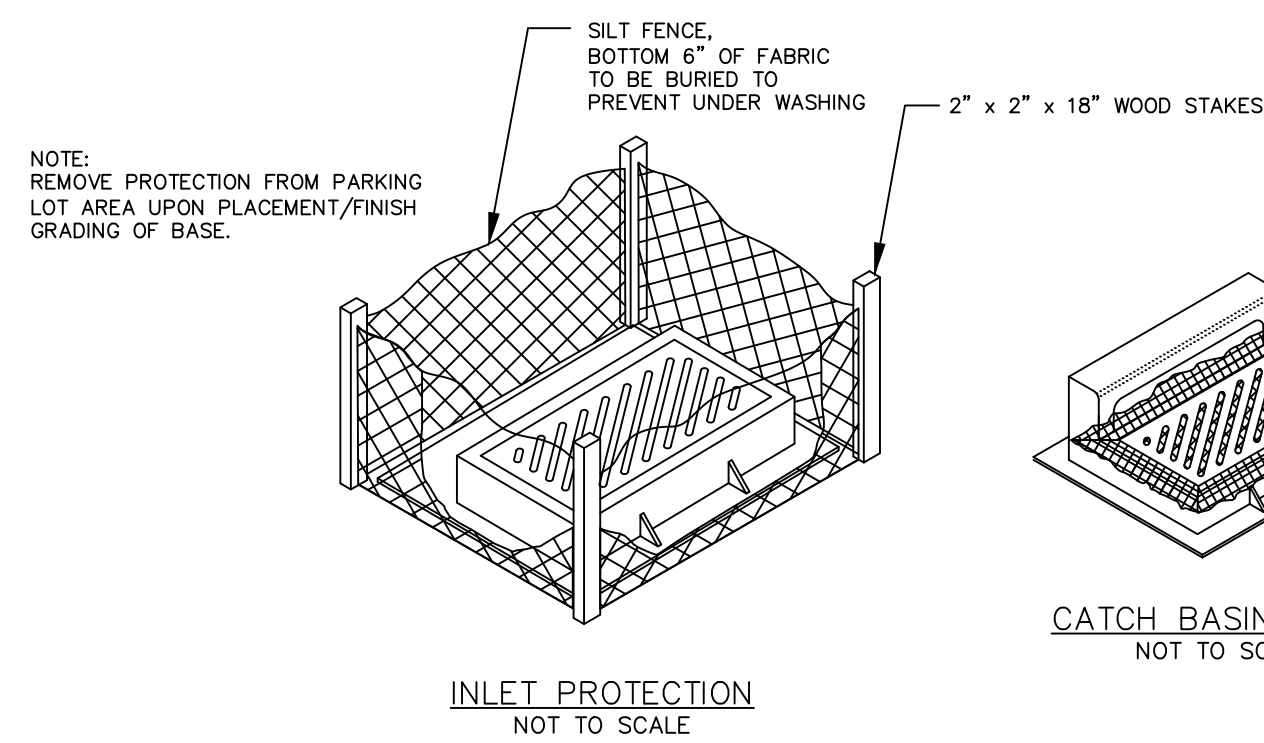
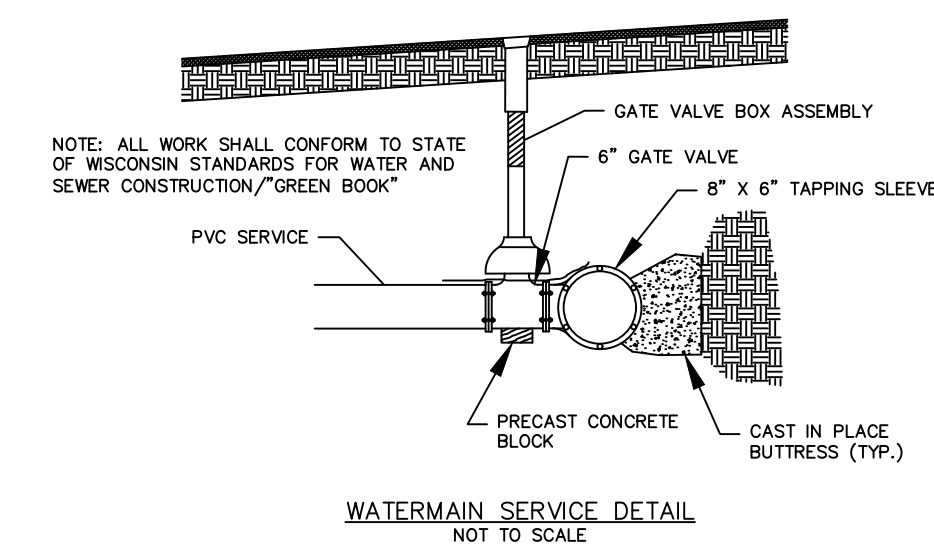
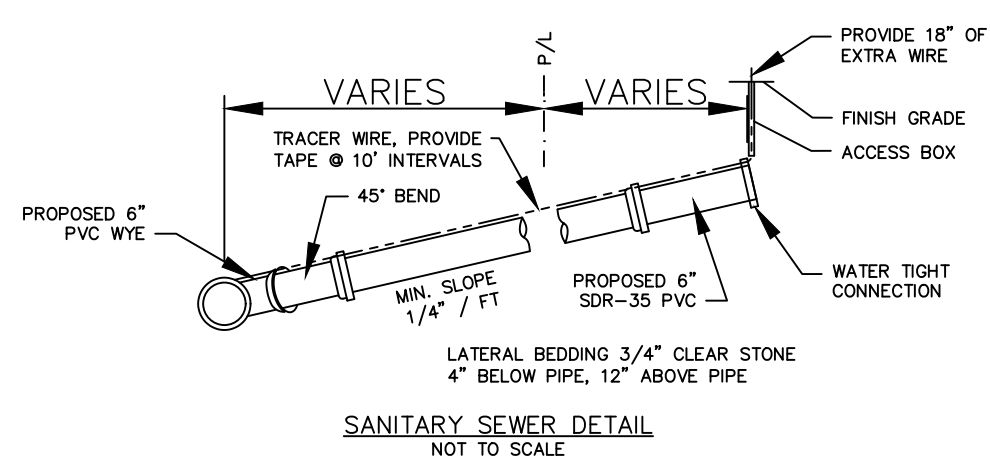


**SILT FENCE GENERAL NOTES:**  
 DETAIL OF CONSTRUCTION NOT SHOWN ON THIS DRAWING SHALL CONFORM TO THE PERTINENT REQUIREMENTS OF THE STANDARD SPECIFICATIONS AND APPLICABLE SPECIAL PROVISIONS.  
 WHEN POSSIBLE THE SILT FENCE SHOULD BE CONSTRUCTED IN AN ARC OR HORSESHOE SHAPE, WITH THE ENDS POINTING UPSLOPE TO MAXIMIZE BOTH STRENGTH AND EFFECTIVENESS.  
 1. CROSS BRACE WITH 2" x 4" WOODEN FRAME OR EQUIVALENT AT TOP OF POSTS AS DIRECTED BY THE ENGINEER.  
 2. MINIMUM 14 GAUGE WIRE REQUIRED, FOLD FABRIC 3" OVER THE WIRE AND STAPLE OR PLACE WIRE ENDS ON 12" C-C.  
 3. EXCAVATE A TRENCH A MINIMUM OF 4" WIDE AND 6" DEEP TO BURY AND ANCHOR THE GEOTEXTILE FABRIC. FILL MATERIAL TO FIT TRENCH AND BACKFILL AND COMPACT TRENCH WITH EXCAVATED SOIL.  
 4. WIRE SUPPORT FENCE SHALL BE 14 GAUGE MINIMUM WOVEN WIRE WITH A MAXIMUM MESH SPACING OF 6". SECURE TOP OF GEOTEXTILE FABRIC TO TOP OF FENCE WITH STAPLES OR WIRE RINGS AT 12" C-C.  
 5. GEOTEXTILE FABRIC SHALL BE REINFORCED WITH AN INDUSTRIAL POLY-PROPYLENE NETTING WITH A MAXIMUM MESH SPACING OF 3/4" OR EQUAL. A HEAVY DUTY NYLON TOP SUPPORT CORD OR EQUIVALENT IS REQUIRED.  
 6. STEEL POSTS SHALL BE STUCCOED "FEET" OR "1/2 FEET" WITH A MINIMUM HEIGHT OF 1.25 INCHES (WITHOUT ANCHOR). FIN ANCHORS SUITABLE TO RESIST POST MOVEMENT ARE REQUIRED. WOOD POSTS SHALL BE A MINIMUM SIZE OF 4" DIA. OR 1 1/2" x 2-1/2" EXCEPT WOOD POSTS FOR GEOTEXTILE FABRIC REINFORCED WITH NETTING SHALL BE A MINIMUM SIZE OF 1-1/2" x 1-1/2" OAK OR HICKORY.  
 ALTERNATIVES A AND B ARE EQUAL AND EITHER MAY BE USED.



SILT FENCE INSTALLATION DETAIL NOT TO SCALE



REVISION NO.	DESCRIPTION	DATE	BY	DESIGNED BY	DATE
				R/JN	5/26/2017
				R/JN	5/26/2017
				JBM	5/26/2017
				CADFILE	
				JREF	
				LMAN	

**PROPOSED STANDARD DETAILS**  
 2720 N GRANDVIEW BLVD  
 CFT NV DEVELOPMENTS, LLC  
 WAUKESHA, WI



KEY PROJECT NUMBER	2502017
PROJECT SCALE	
SHEET NUMBER	C-5