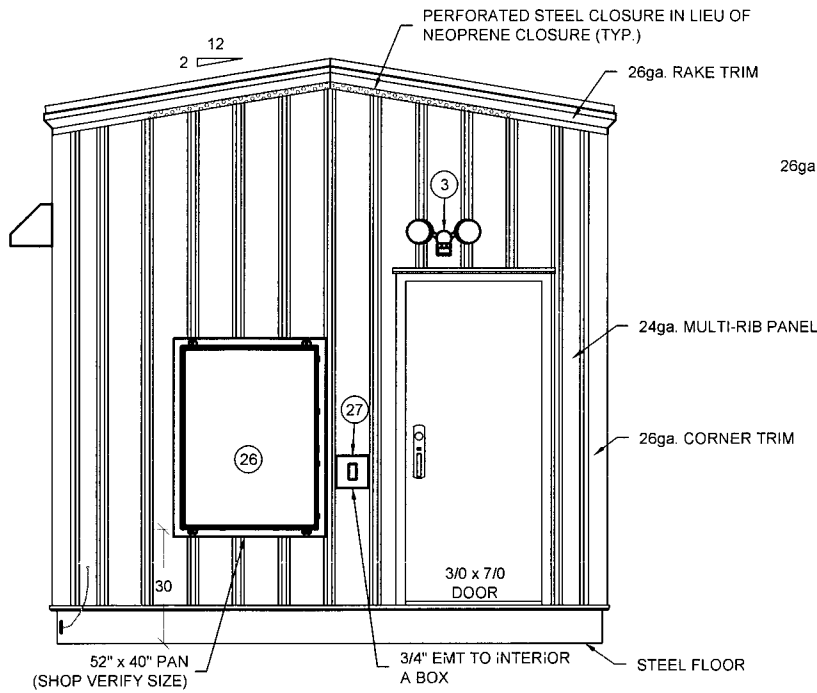


N:\1 Project Files\11600PROJ\11695-96 LAYOUT.dwg, 10/18/2013 1:42:51 PM, , DWG To PDF.pc3

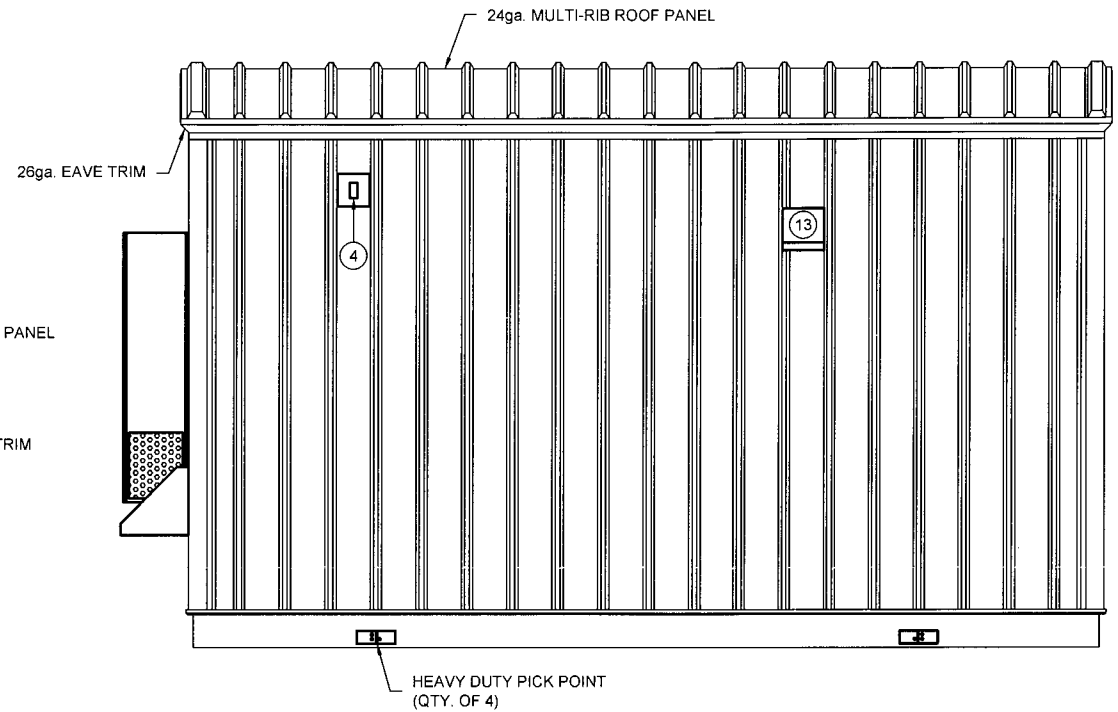
QTY	DOOR SCHEDULE
2	3'-0" x 7'-0", 18ga. DOOR, 16ga. FRAME, R12.5 DOOR INSULATION - UPGRADE (URETHANE), RHR, PANIC DEVICE: LOCKWOOD - SERIES RIM PANIC N500 - 4 - W/ OT51C EXT. TRIM AND 26D FINISH THUMBLATCH PULL W/ YALE CONSTRUCTION CORE - 1109 PE KEYWAY ELECTRIC STRIKE - HES 9600 - 12/24VDC-630
4	KEYS, (2) PER LOCKSET
6	HINGE - 4 1/2" NRP - SS (32D) - BALL BEARING (BB51)
2	DOOR CLOSER W/ HOLD OPEN LCN4111HEDA (UP TO 4' DOOR)
2	STAINLESS STEEL PULL HANDLE MOUNTED TO THE INSIDE OF THE DOOR
2	WEATHERSTRIP - REESE
2	THRESHOLD - REESE
4	WATERSHED - REESE (2) 202C & (2) 203C
2	SWEEP

GENERAL NOTES:

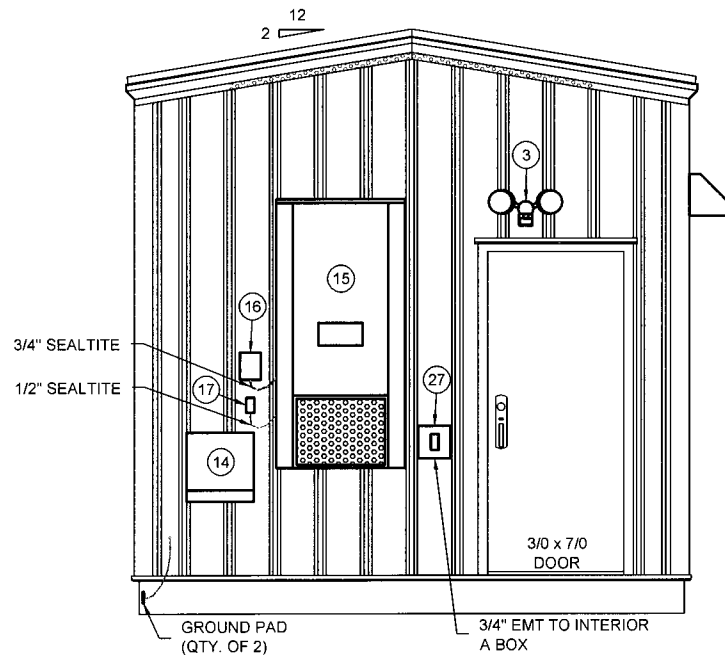
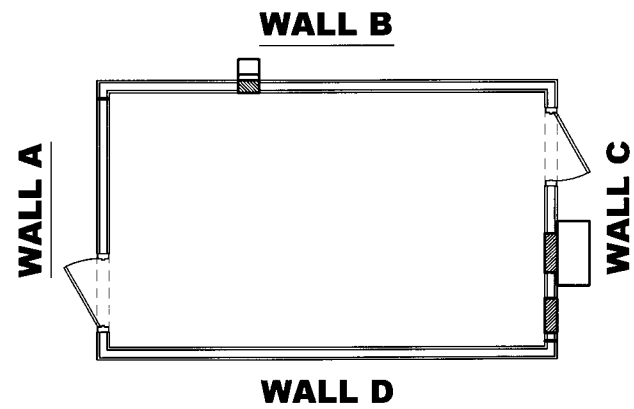
- REFER TO THE EQUIPMENT SCHEDULE ON E1 FOR DESCRIPTIONS OF THE NUMBERED ITEMS.
- EXTERIOR ITEMS REMOVED FOR SHIPPING:
- NONE
- OUTSIDE BUILDING SHIPPING DIMENSIONS NOT TO EXCEED 13'-4" x 24'-0" x 12'-8".
- EXTERIOR END WALL FASTENER PATTERN:
- BASE, GIRTS, & TOP CHANNEL 5-7-5 PATTERN
- 20" O.C. STITCHING AT VERTICAL LAPS
EXTERIOR SIDE WALL FASTENER PATTERN:
- BASE & TOP CHANNEL 5-7-5 PATTERN, GIRTS 12" O.C.
- 20" O.C. STITCHING AT VERTICAL LAPS
- SEE SHEET E1 FOR INTERIOR ELECTRICAL ITEMS NOT INSTALLED, SHIPPED LOOSE.



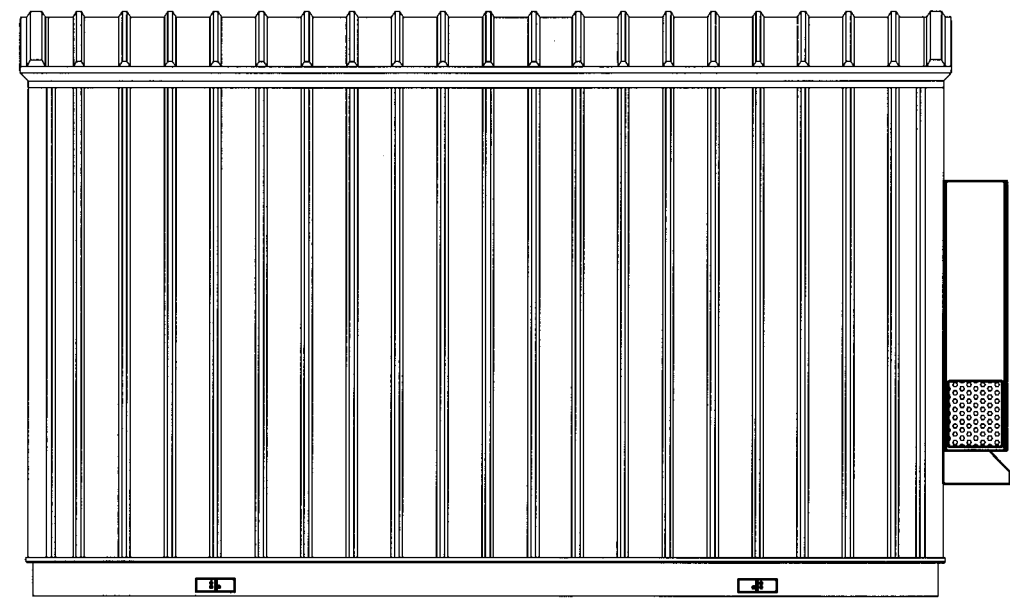
WALL A



WALL B



WALL C



WALL D

RELEASE	DATE
RELEASED TO WELD	XX-XXX-XX
RELEASED TO STRUCTURE	XX-XXX-XX
RELEASED TO ELECTRICAL	XX-XXX-XX

DATE	DRAWING HISTORY	DWG/APP	DATE	DRAWING HISTORY	DWG/APP
18-OCT-13	INITIAL STRUCTURAL DRAWINGS	SJO/ELZ			
18-OCT-13	INITIAL ELECTRICAL DRAWINGS	SJO/PJS			

JOB DESCRIPTION: WE ENERGIES
12'-0" x 20'-0" x 10'-6"

SHEET TITLE: EXTERIOR ELEVATIONS
WALLS A, B, C & D

TRACHTE Trachte, Inc. © 2013
ALL RIGHTS RESERVED

422 NORTH BURR OAK AVENUE
OREGON, WI 53575
PHONE: 608-835-5707 FAX: 608-835-7279
E-MAIL: DESIGN@TRACHTEUSA.COM

MODEL # WE1220
TRACHTE JOB #
11695-96
SHEET # 10 OF 21
S7