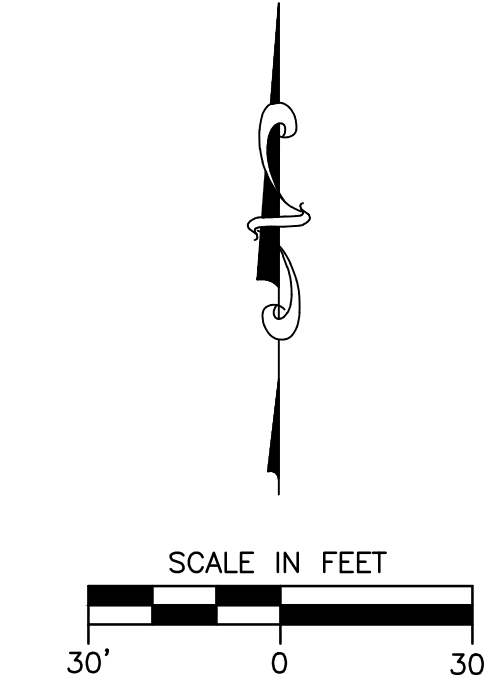
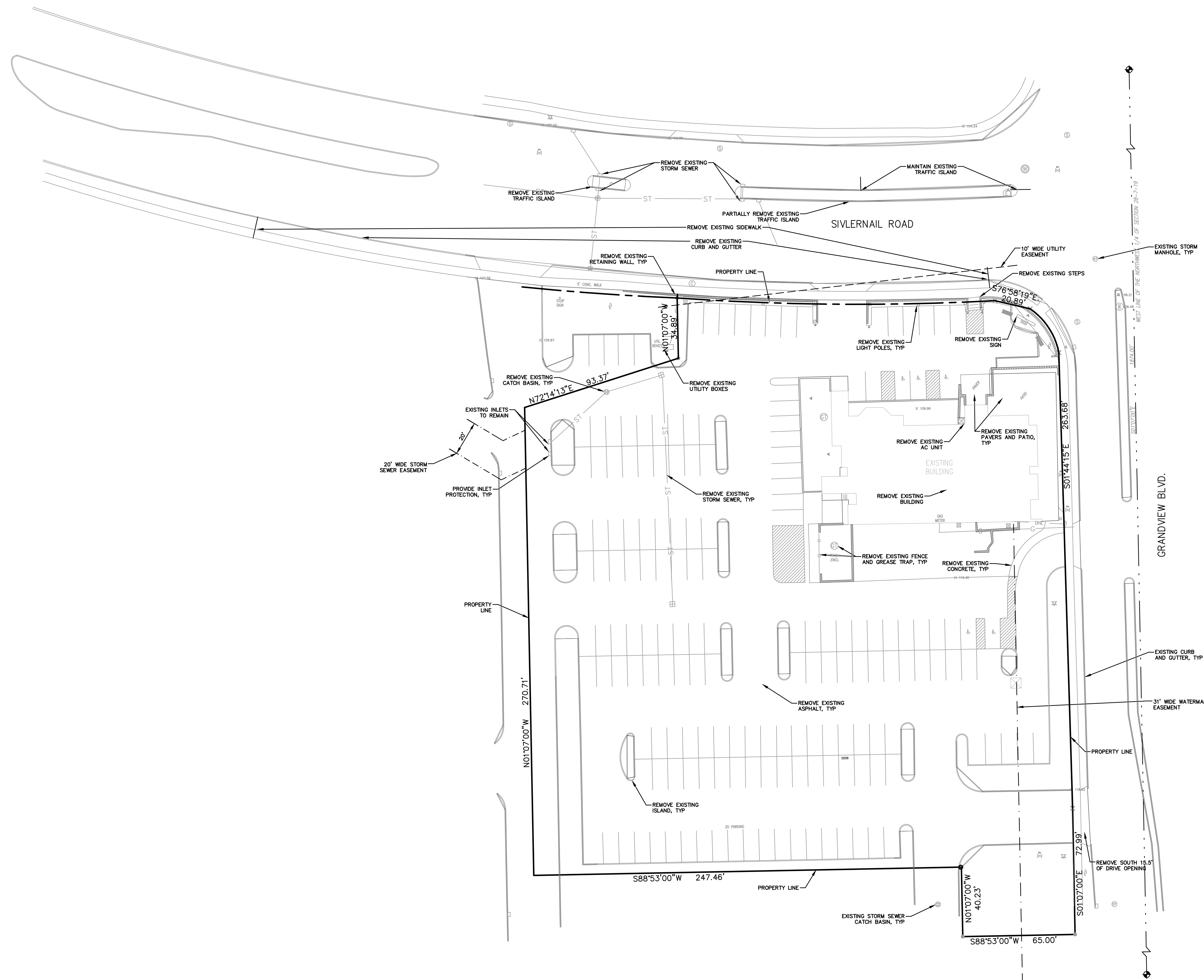


- NOTES:
- 1.) CONTRACTOR TO INSTALL ALL EROSION CONTROL DEVICES PRIOR TO ANY LAND DISTURBANCE ACTIVITIES.
 - 2.) GENERAL CONTRACTOR TO COORDINATE ALL UTILITY DISCONNECTS AND REMOVALS WITH PUBLIC UTILITY COMPANIES.
 - 3.) ALL WORK WITHIN PUBLIC RIGHT OF WAY SHALL BE COORDINATED WITH THE CITY OF WAUKESHA AND SHALL ADHERE TO CITY SPECIFICATIONS. ALL RESTORATION WORK WITHIN RIGHT OF WAY SHALL ADHERE TO CITY SPECIFICATIONS.



REVISION NO.	DESCRIPTION	DATE	BY	DESIGNED BY	DATE
				RCM	03/14/16
				MTS	03/14/16
				SAO	03/14/16
				CADFILE	
				WREF	
				LMAN	

DEMOLITION PLAN
2720 N GRANDVIEW BLVD
CFT NV DEVELOPMENTS, LLC
WAUKESHA, WI

"THE INFORMATION SHOWN ON THIS DRAWING CONCERNING TYPE AND LOCATION OF UNDERGROUND UTILITIES IS NOT GUARANTEED TO BE ACCURATE OR ALL INCLUSIVE. THE CONTRACTOR IS RESPONSIBLE FOR MAKING HIS OWN DETERMINATIONS AS TO THE TYPE AND LOCATION OF UNDERGROUND UTILITIES AS MAY BE NECESSARY TO AVOID DAMAGE THERETO."
 © 2005 Key Engineering Group Ltd.



KEY PROJECT NUMBER	2502017
PROJECT SCALE	1" = 30'
SHEET NUMBER	C-1