

CITY OF WAUKESHA - PLAN COMMISSION SUBMITTAL

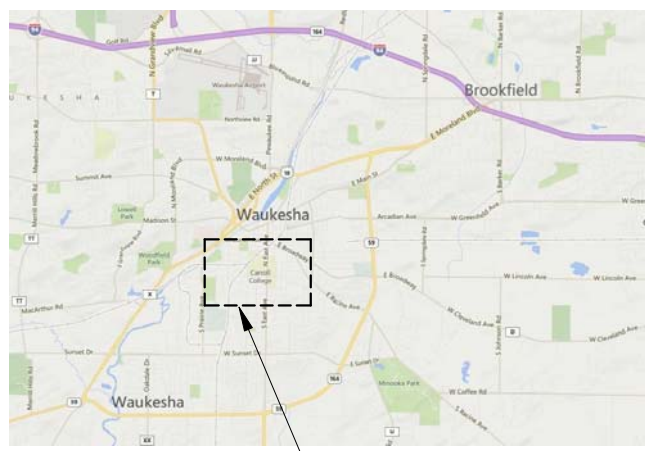
HAERTEL FIELD - TEAM CENTER

465 W Newhall Ave, Waukesha, WI 53186

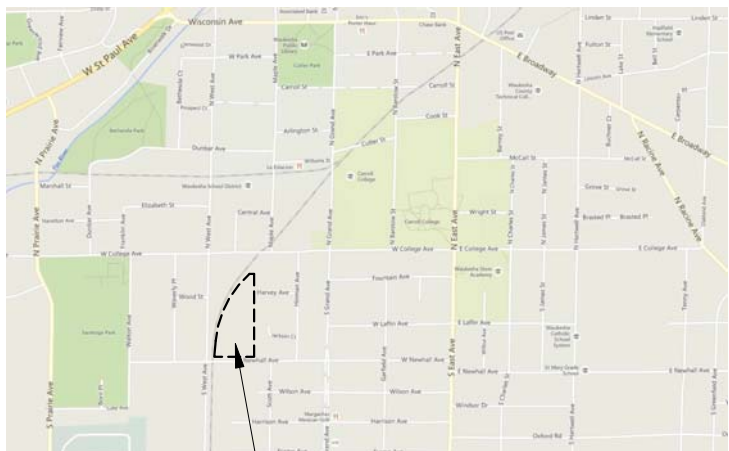
KAHLER SLATER PROJECT: 214074.00



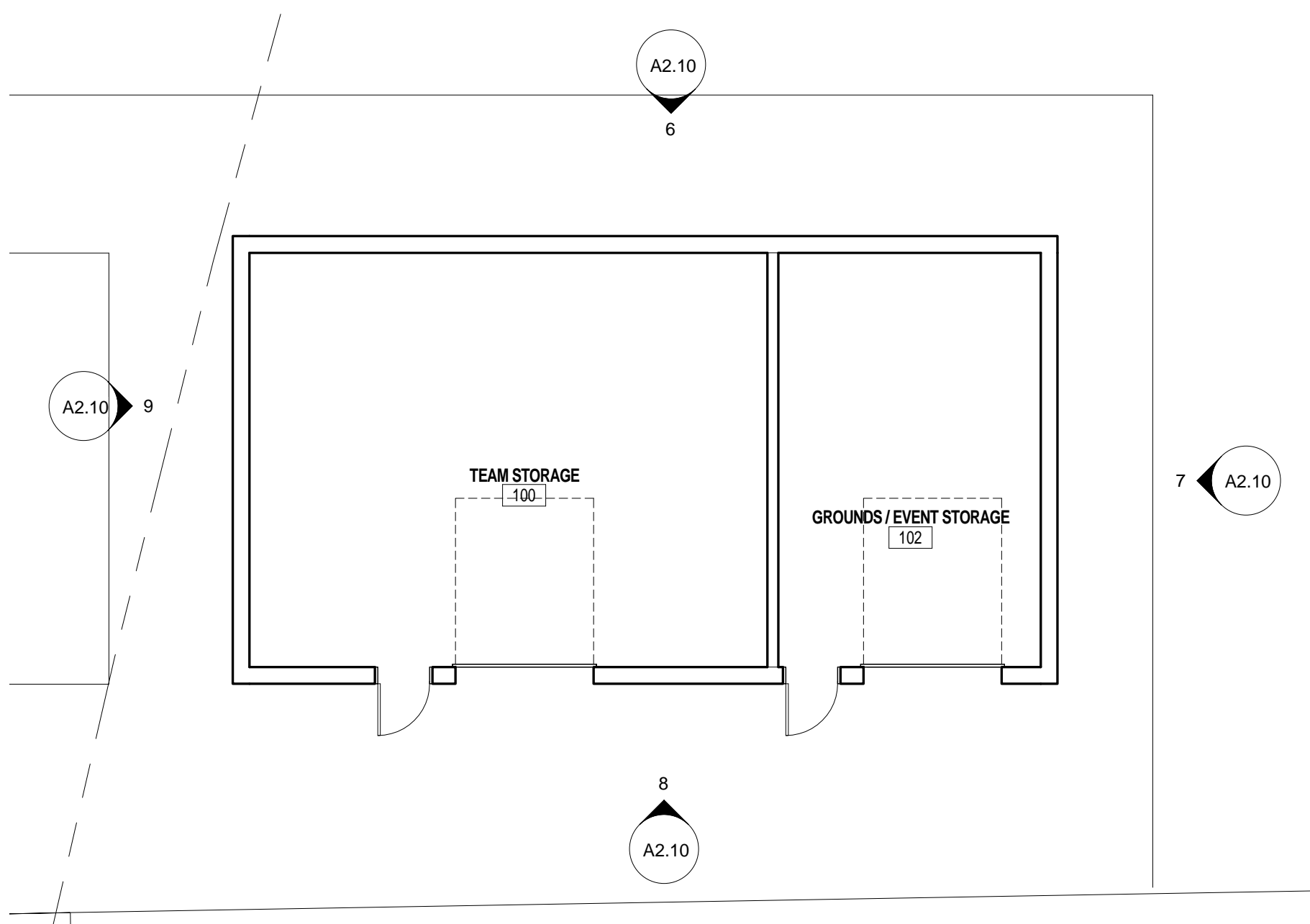
IMAGE IS AN ARTISTIC IMPRESSION ONLY AND MAY NOT EXACTLY REFLECT THE ACTUAL CONSTRUCTION AS DELINEATED BY THE CONSTRUCTION DRAWINGS



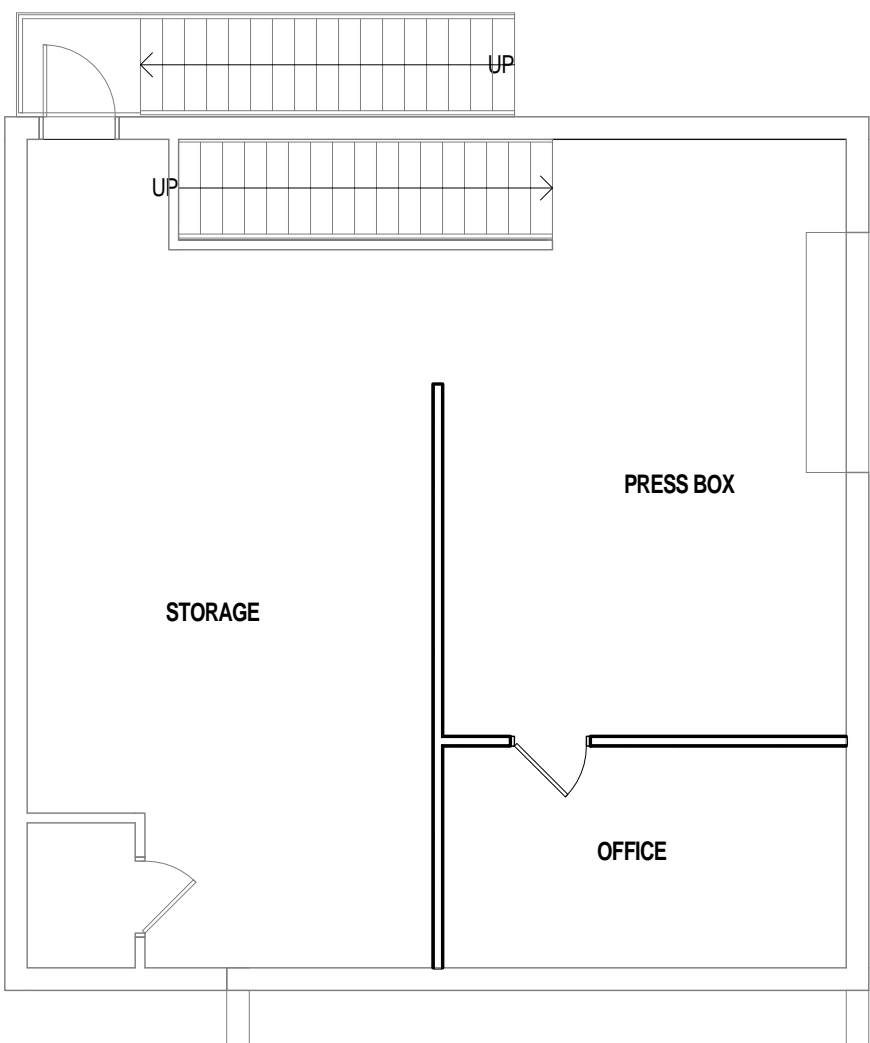
SEE ENLARGED MAP
WAUKESHA MAP



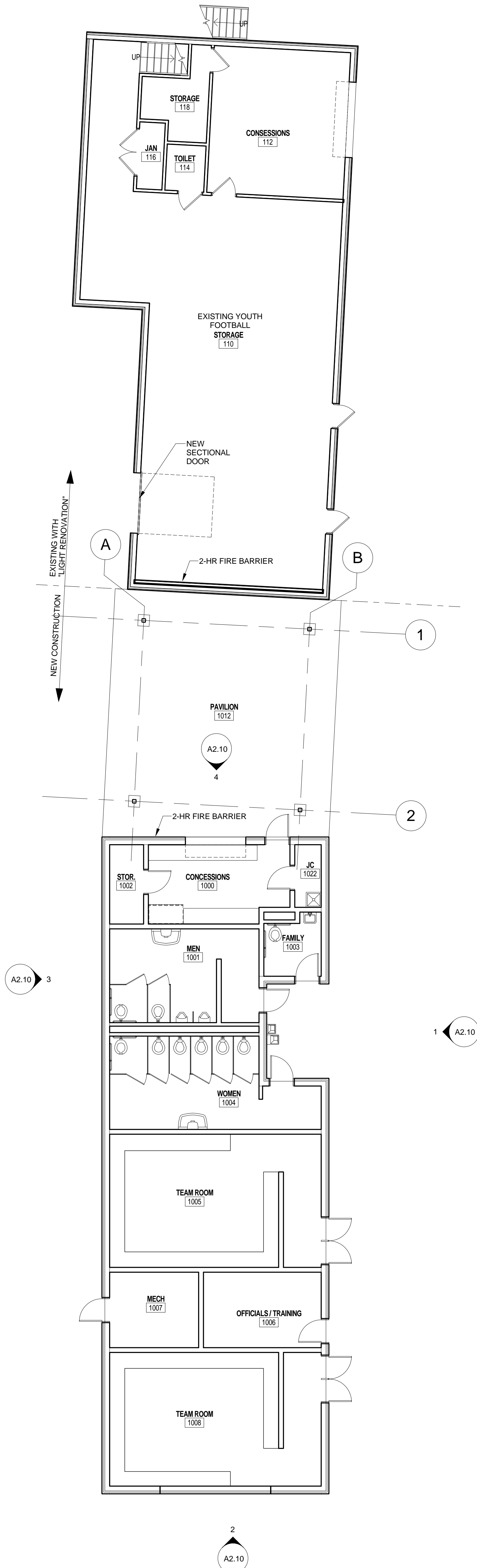
PROJECT SITE
WAUKESHA MAP - ENLARGED



2 STORAGE BUILDING
1/8" = 1'-0"



3 SECOND FLOOR PLAN - TEAM CENTER
1/8" = 1'-0"



1 FIRST FLOOR PLAN - TEAM CENTER
1/8" = 1'-0"

NOT FOR
CONSTRUCTION

Revisions

CITY OF WAUKESHA - PLAN
COMMISSION SUBMITTAL

Drawing Date
4/27/14

HAERTEL FIELD - TEAM
CENTER

465 W Newhall Ave, Waukesha, WI 53186

Project No. 214074.00
CARROLL
UNIVERSITY

Sheet Title
FLOOR PLANS

111 West Wisconsin Avenue, Milwaukee, Wisconsin 53203
Telephone 414.272.2000 Fax 414.272.2001
44 East Miller Street, Suite 700, Madison, Wisconsin 53703
Telephone 608.283.6300 Fax 608.283.6317

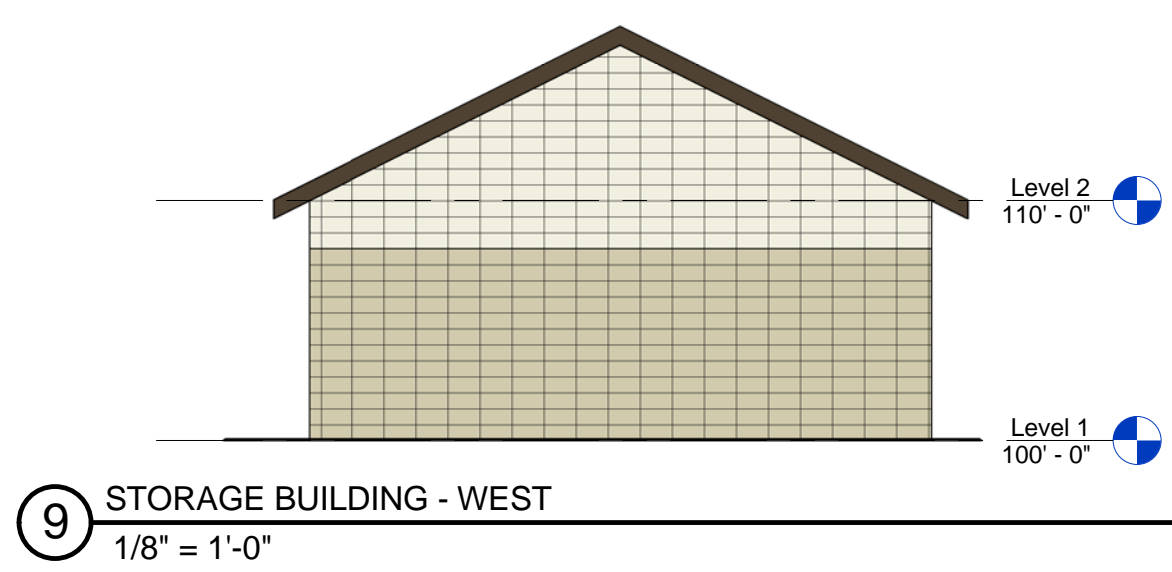
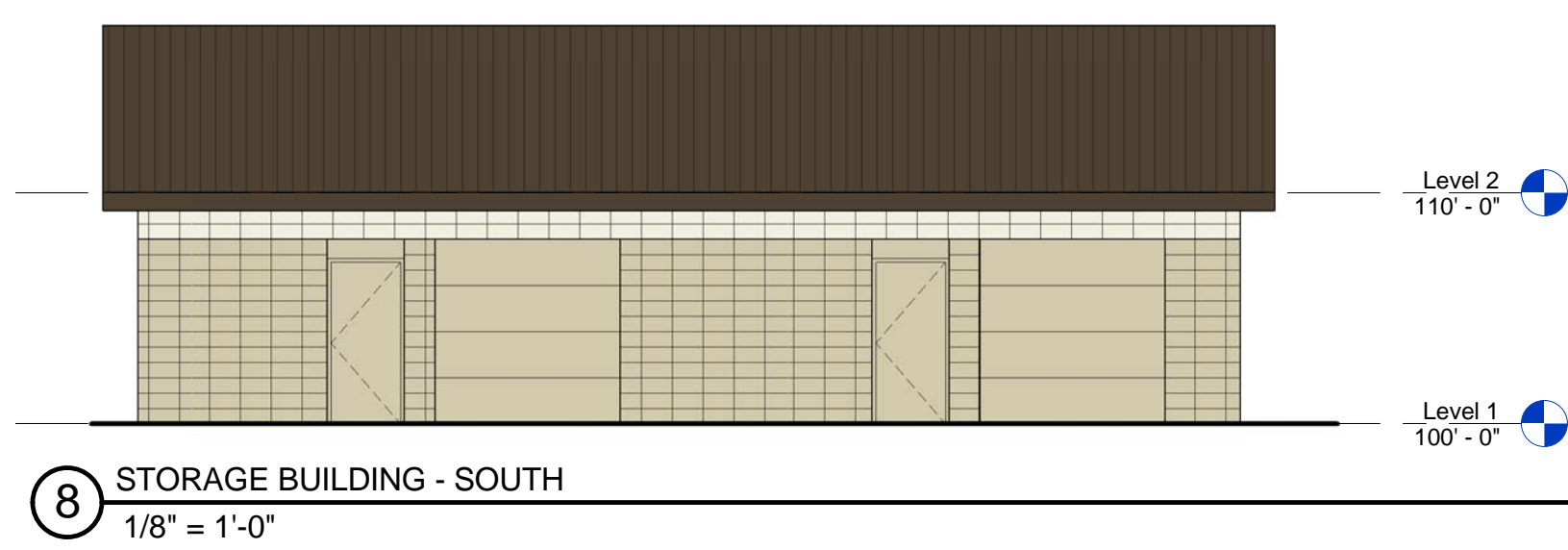
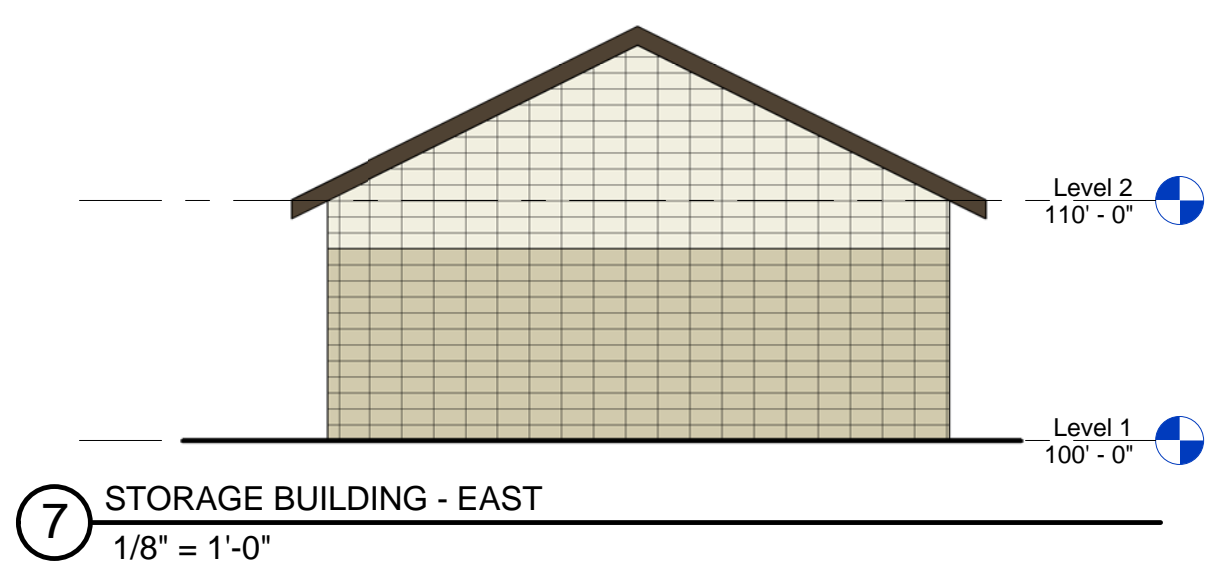
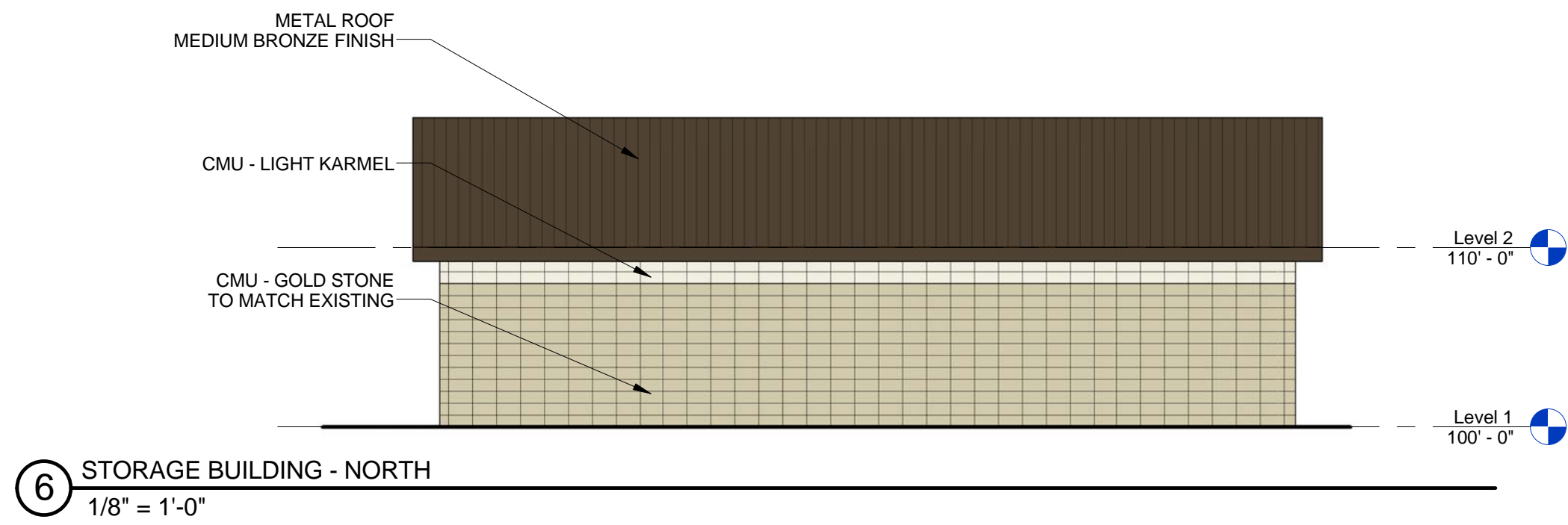
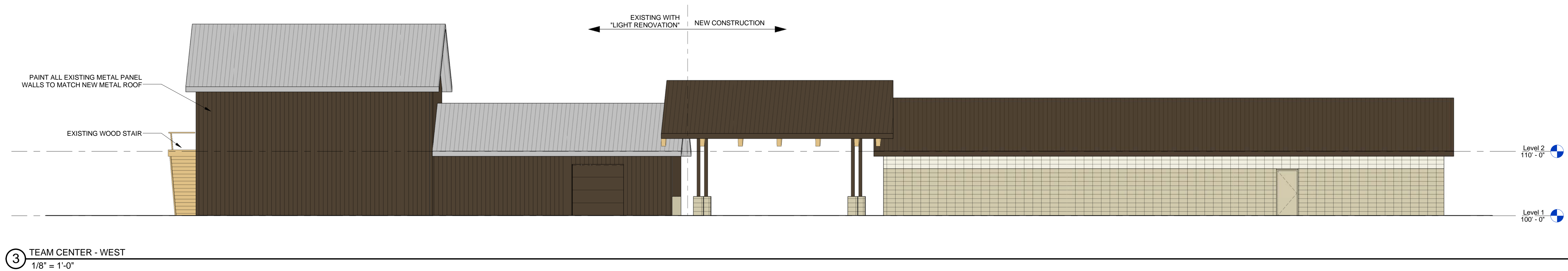
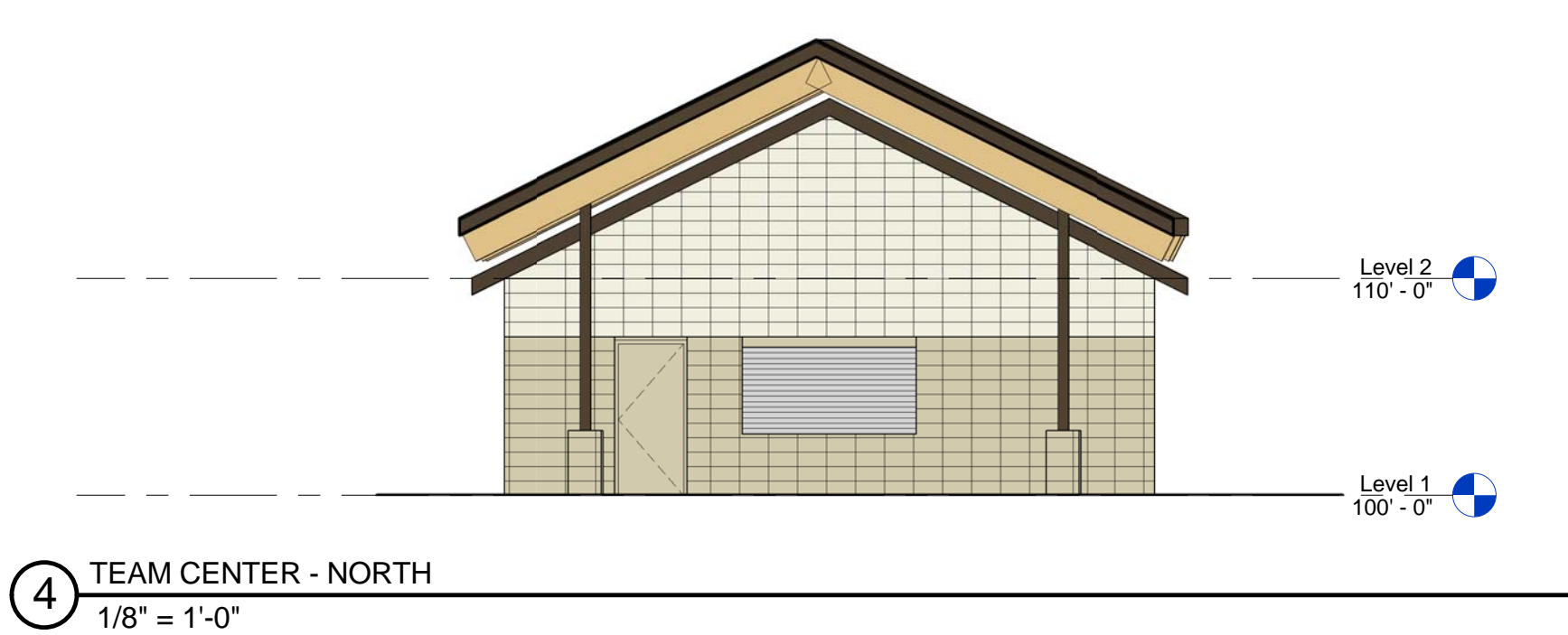
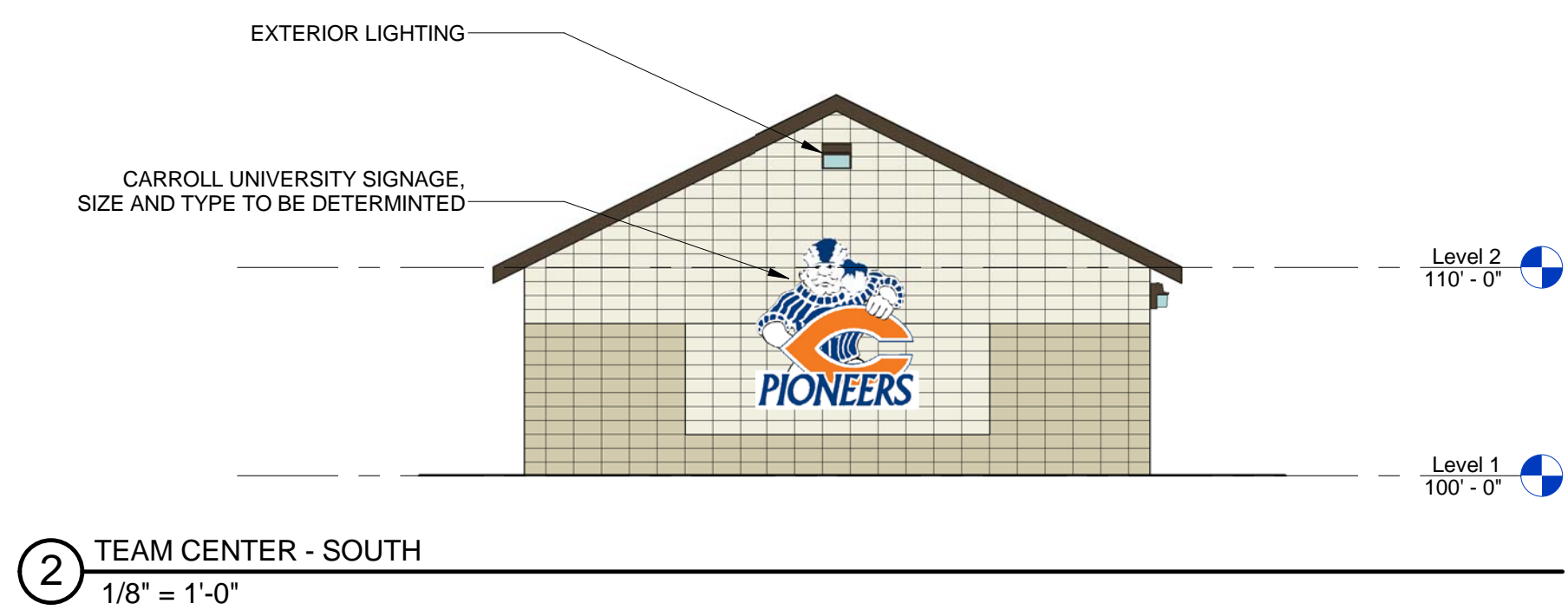
Sheet No.
A1.10

GENERAL ELEVATION NOTES

1. ALL METAL SURFACES EXPOSED TO VIEW (INCLUDING MISCELLANEOUS METALS, PIPING, MECHANICAL EQUIPMENT, LADDERS, STAIRS, RAILINGS, COLUMNS, PLATFORMS, ETC.) SHALL BE PAINTED, U.N.O.

EXTERIOR MATERIAL KEY:

- CMU - STACK BOND - TRENDSTONE - GOLD STONE
- CMU - STACK BOND - TREND STONE - LIGHT KARMEI
- NEW METAL ROOF - PAC CLAD - MEDIUM BRONZE
- STRUCTURAL WOOD TIMBERS - NATURAL FINISH



NOT FOR
CONSTRUCTION

Revisions

CITY OF WAUKESHA - PLAN
COMMISSION SUBMITTAL

Drawing Date
4/27/14

HAERTEL FIELD - TEAM
CENTER

465 W Newhall Ave, Waukesha, WI 53186

Project No. 214074.00
CARROLL
UNIVERSITY

Sheet Title
EXTERIOR
ELEVATIONS

111 West Wisconsin Avenue, Milwaukee, Wisconsin 53203
Telephone 414.272.2000 Fax 414.272.2001
44 East Millin Street, Suite 700, Madison, Wisconsin 53703
Telephone 608.283.6300 Fax 608.283.6317

Sheet No.
A2.10