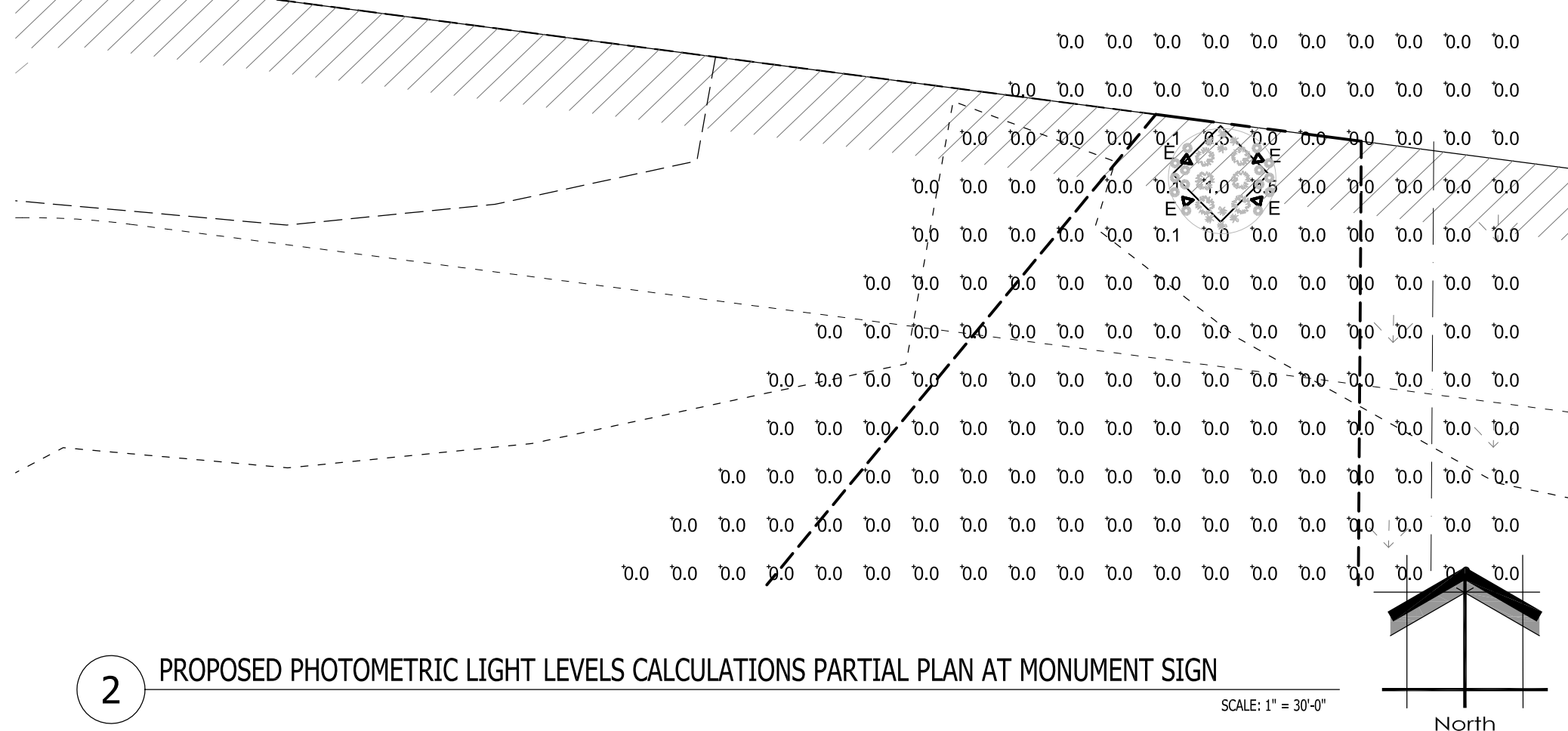


1 PROPOSED PHOTOMETRIC LIGHT LEVELS CALCULATIONS PLAN
SCALE: 1" = 30'-0"



2 PROPOSED PHOTOMETRIC LIGHT LEVELS CALCULATIONS PARTIAL PLAN AT MONUMENT SIGN
SCALE: 1" = 30'-0"

Symbol	Label	Qty	Catalog Number	Description	Lamp	File	Lumens	LLF	Watts
☐	A	2	CPY250-A-DM-F-CUL-CS	Cree CPY250 Canopy / Soffit Luminaire w- Flat Lens, 122W, 4000K Platinum Silver Factory Finish, Provide Canopy Mounting Plate	72 type XTE AW7 LEDs on white square PCB, 4000K color temperature.	CPY250-A-xx-F-A-UL-xx-40K_RESTL-2013-0002.ies	Absolute	1.00	81.5
☐	B	9	XSPW-A-0-3-M-CUL-CS	Cree XSPW Series Wallpack Luminaire, Type III Medium, 4000K, C Input Power Designator, Platinum Silver factory Finish, U.L. listed for Wet Locations	4 type MDA LEDs	XSPWx3FC-U_RESTL-2014-0018.IES	Absolute	1.00	42.96
☐	C	5	OSQ A NM 4ME A 40K-UL-CS w/OSQ BLSMF-DA-CS, CL-SSP-4011-25 -D6-PS-ABL	CONFIGURED FROM Cree OSQ Series Area Luminaire, Type IV Medium w/ Backlight Shield, A Input Power Designator, 4000K on NEW concrete base	CONFIGURED FROM Eight type MDA 4000K LEDs	OSQ A xx 4ME A w- OSQ-BLSMF 40K_CONFIGU RED.ies	Absolute	1.00	112
☐	D	1	OSQ A NM 4ME A 40K-UL-CS w/OSQ DA-CS, CL-SSP-4011-25 -D6-PS-ABL	CONFIGURED FROM Cree OSQ Series Area Luminaire, Type IV Medium, A Input Power Designator, 4000K on NEW concrete base	CONFIGURED FROM Eight type MDA 4000K LEDs	OSQ A xx 4ME A w- OSQ-40K_CONFIGU RED.ies	Absolute	1.00	112
☐	E	8	dCrest-10-K30-FL-BZ	HOLM LIGHTING 1,000 LUMEN 10.5" X 5" W, X 12.75" H, LED 40 DEGREE BEAM SPREAD DIRECTIONAL FLOOD ON 12" RISER AND w/ LONG SHROUD		dcrest-10-k30-fl-bz.ies	Absolute	1.00	10.77
☐	F	3	nBEC-27-20-K30-FL-BZ	HOLM LIGHTING nBECKON 1,300 LUMEN 10.5" DIA. X 15.5" H, LED IN-GRADE UPLIGHT FIXTURE w/ 20 DEGREE BEAM SPREAD w/ SHROUD		nbec-27-20-k30-fl-bz.ies	Absolute	1.00	23.66

Description	Symbol	Avg	Max	Min	Max/Min	Avg/Min	UG	CV	Avg/Max
Calc Zone #6	+	0.7 fc	8.5 fc	0.0 fc	N/A	N/A	-1.0	2.2	0.0:1

LUMINAIRE NOTES

- FIXTURE "C" [5] AND "D" [1] ARE NEW POLE MOUNTED FIXTURES (SINGLE HEAD AND TENON) TO BE INSTALLED ON A NEW 18'-0" LIGHT POLE AND 24" POURED CONCRETE LIGHT POLE BASE FOUNDATION.
- ALL NEW CONCRETE LIGHT POLE BASES ARE TO HAVE ALL EXPOSED FORM MARKS REMOVED, GROUND FLUSH AND THE SURFACE IS TO BE PROPERLY PREPARED TO RECEIVE A HAND TROWELED, MASONRY SKIM COAT OF APPROPRIATE THICKNESS TO ACHIEVE A DURABLE SURFACE AND LONG LASTING AESTHETIC.
- ALL PROPOSED FIXTURE HEADS ARE TO BE DARK-SKY COMPLIANT AND HAVE HARDWARE WITH IESNA FULL CUTOFF HOUSE SIDE SHIELDING WHERE REQUIRED. NEW PROPOSED POLE MOUNTED FIXTURES (HEADS AND TENONS) FINISH IS TO MATCH EXISTING W/ OPTIONAL PHOTOCELL CONTROL.
- REFER TO ARCHITECTURAL ELEVATION FOR BUILDING MOUNTED FIXTURES MOUNTING HEIGHTS

THIS LIGHTING PLAN REPRESENTS ILLUMINATION LEVELS ARE CALCULATED VALUES INCLUDE DIRECT AND INTER-REFLECTED COMPONENTS.

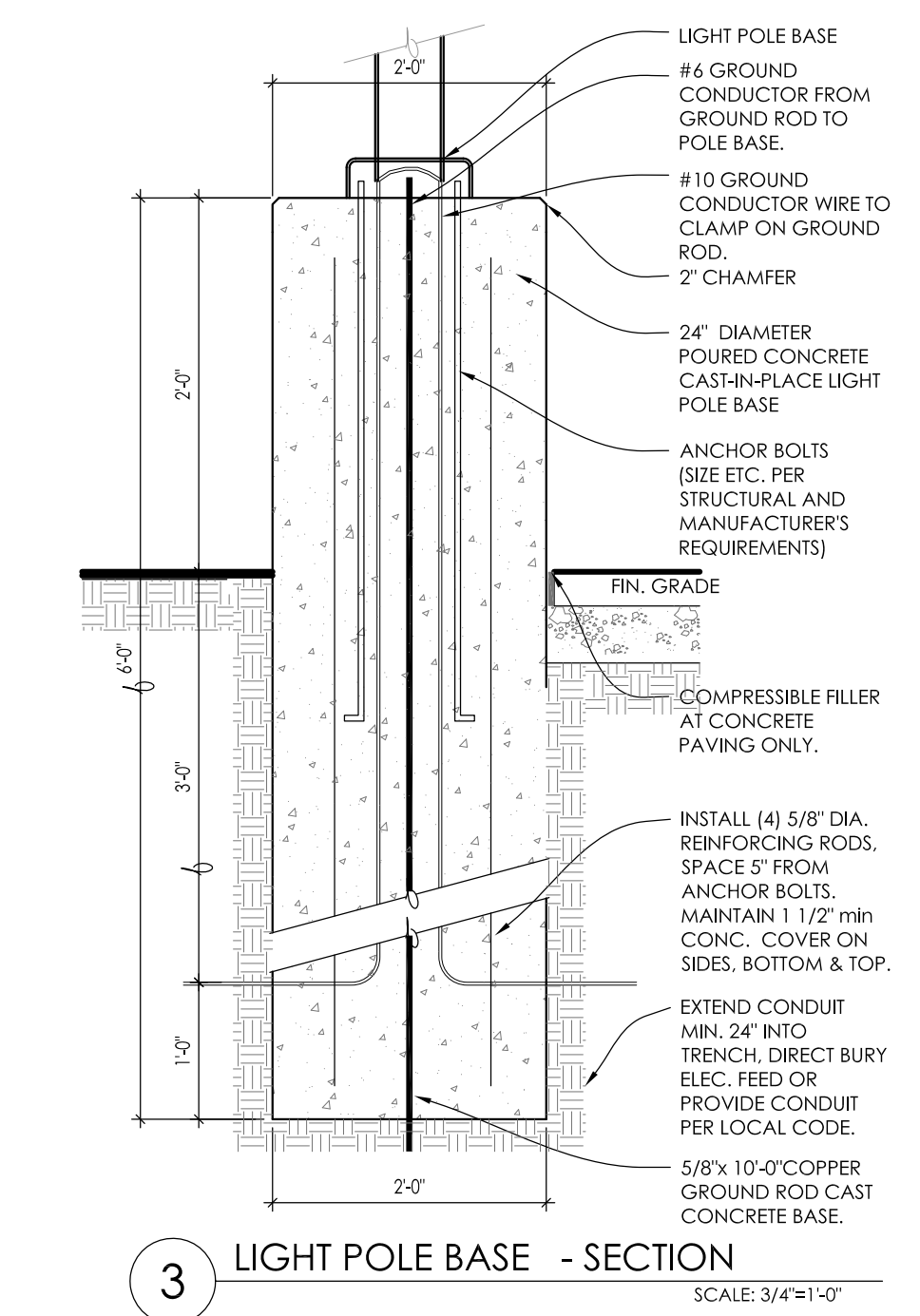
THIS LIGHTING PLAN REPRESENTS ILLUMINATION LEVELS CALCULATED FROM LABORATORY DATA TAKEN UNDER CONTROLLED CONDITIONS IN ACCORDANCE WITH THE ILLUMINATING ENGINEERING SOCIETY (IES) APPROVED METHODS. ACTUAL PERFORMANCE OF ANY MANUFACTURER'S LUMINAIRES MAY VARY DUE TO CHANGES IN ELECTRICAL VOLTAGE, TOLERANCE IN LAMPS/LEDS AND OTHER MAY VARY DUE TO CHANGES IN ELECTRICAL VOLTAGE, TOLERANCE IN LAMPS/LEDS AND OTHER VARIABLE FIELD CONDITIONS. CALCULATIONS DO NOT INCLUDE OBSTRUCTIONS SUCH AS BUILDINGS CURBS, LANDSCAPING, OR ANY OTHER ARCHITECTURAL ELEMENTS UNLESS NOTED.

PHOTOMETRIC GENERAL NOTES:

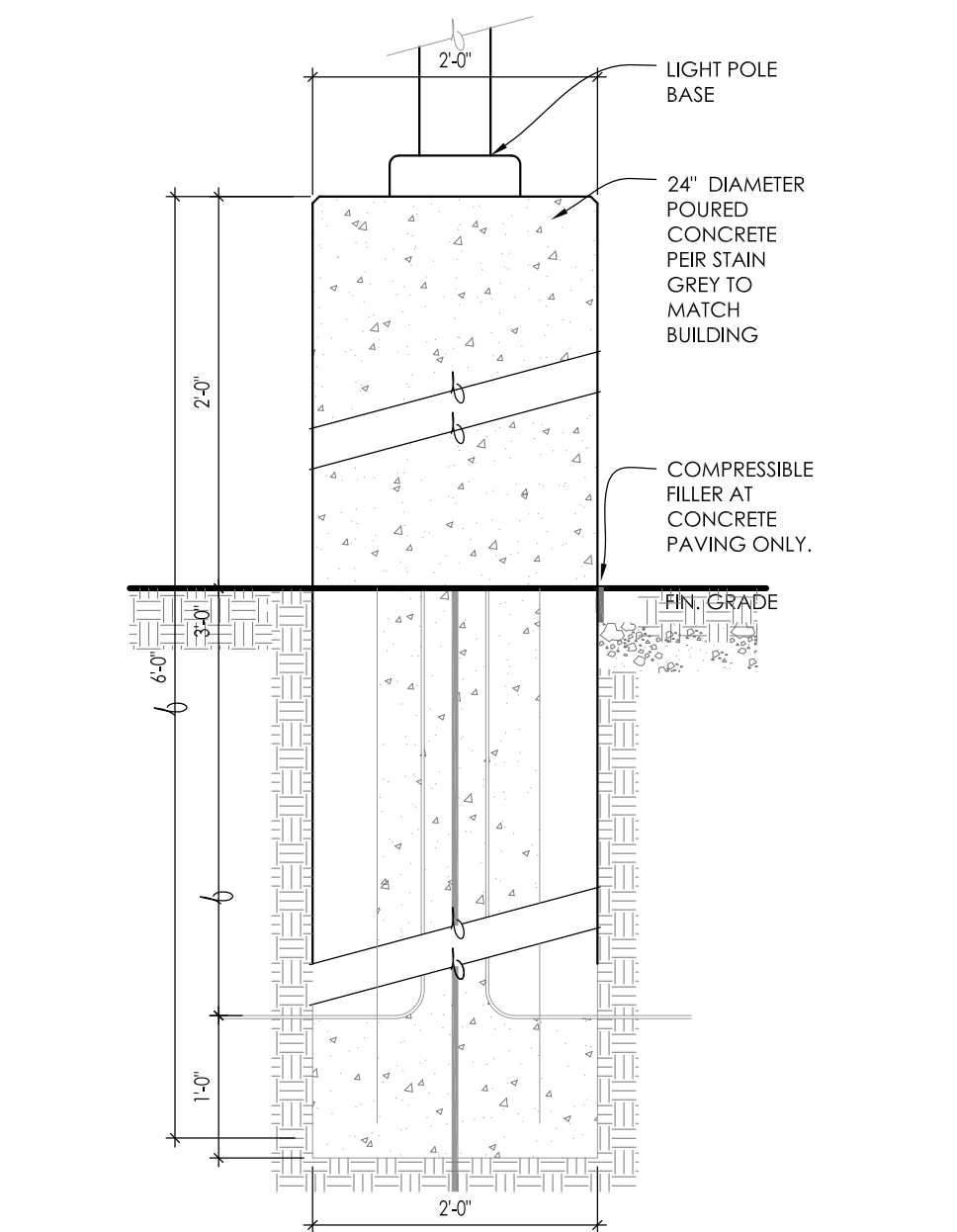
- BASED ON THE INFORMATION PROVIDED, ALL DIMENSIONS AND LUMINAIRE LOCATIONS SHOWN REPRESENT RECOMMENDED POLE PLACEMENTS AND LUMINAIRE ORIENTATION. THE ENGINEER AND/OR ARCHITECT MUST DETERMINE APPLICABILITY OF THE LAYOUT TO RELEVANT FIELD CONDITIONS.
- THE DEPICTED ILLUMINATION RESULTS ARE BASED UPON ILLUMINATION MEASUREMENTS AS CALCULATED BY AN INDEPENDENT LABORATORY. LUMINAIRE CHARACTERISTICAL DATA WAS MEASURED UNDER CONTROLLED CONDITIONS IN ACCORDANCE WITH APPROVED ILLUMINATION ENGINEERING SOCIETY METHODS. ACTUAL ON-SITE PERFORMANCE OF ANY MANUFACTURER'S LUMINAIRES MAY VARY FROM LABORATORY TEST RESULTS DUE TO VARIATIONS IN ELECTRICAL VOLTAGE, TOLERANCE IN LAMPS, AND OTHER VARIABLE FIELD CONDITIONS.
- IF EXISTING LUMINAIRES ARE INCLUDED IN THIS REPORT, THEIR ILLUMINATION CHARACTERISTICS ARE BASED UPON A COMBINATIONS OF CUSTOMER'S PROVIDED SPECIFICATIONS & OUR BEST ESTIMATIONS.
- ALL EXISTING AND NEW CONCRETE LIGHT POLE BASES ARE TO HAVE ALL FORM MARKS REMOVED, GROUND FLUSH AND THE SURFACE IS TO BE PROPERLY PREPARED TO RECEIVE A HAND TROWELED, MASONRY SKIM COAT OF APPROPRIATE THICKNESS TO ACHIEVE A DURABLE SURFACE AND LONG LASTING AESTHETIC.

EXISTING CONDITIONS GENERAL NOTES:

- INFORMATION PERTAINING TO EXISTING CONDITIONS GIVEN ON THESE ARCHITECTURAL DRAWINGS REPRESENTS TO THE BEST OF OUR KNOWLEDGE THE ACTUAL EXISTING FIELD CONDITIONS. INSITE LANDSCAPE DESIGN, INC. MAKES NO WARRANTY AS TO THEIR ACCURACY. CONTRACTOR TO FIELD VERIFY EXISTING CONDITIONS IMPERATIVE TO THEIR NEW WORK. REPORT ANY DISCREPANCIES BETWEEN THE DRAWINGS AND FIELD CONDITIONS TO THE LANDSCAPE ARCHITECT FOR REVIEW. ANY WORK PERFORMED PRIOR TO RESOLUTION OF DISCREPANCIES BY THE LANDSCAPE ARCHITECT IS SUBJECT TO REMOVAL AND REPLACEMENT AT NO ADDITIONAL COST TO THE CONTRACT.
- VERIFY ALL EXISTING CONDITIONS, DIMENSIONS, AND ALIGNMENT OF WALLS. BRING ANY DISCREPANCIES TO THE LANDSCAPE ARCHITECTS ATTENTION PRIOR TO FABRICATION / CONSTRUCTION BEGINS.
- VERIFY LOCATION OF ALL EXISTING UNDERGROUND UTILITIES I.E. WATER, SEWER, TELECOMMUNICATION AND ACCESS PANELS w/ MECHANICAL AND ELECTRICAL EQUIPMENT FOR ACCESSIBILITY OF MECHANICAL & ELECTRICAL ITEMS.



3 LIGHT POLE BASE - SECTION
SCALE: 3/4" = 1'-0"



4 LIGHT POLE BASE - ELEVATION
SCALE: 3/4" = 1'-0"

Project:
SOFT WATER INC.
Corporate Drive
Waukesha, WI 53189

Issuance and Revisions:

Date	Number	Description
03/26/18		Client Review Submittal
03/27/18		Plan Commission Submittal
05/02/18		Revisions Based on Plan Commission Comments

COPYRIGHT InSite Landscape Design Inc. 2018
ALL RIGHTS RESERVED
THIS DRAWING IS NOT TO BE REPRODUCED, CHANGED, COPIED OR ASSIGNED TO ANY THIRD PARTY IN ANY FORM OR MANNER WITHOUT FIRST OBTAINING THE EXPRESSED WRITTEN PERMISSION OF InSite Landscape Design, Inc. THE CLIENT AGREES TO INDEMNIFY AND HOLD THE LANDSCAPE ARCHITECT HARMLESS FROM ANY DAMAGES, LIABILITY, OR COST, INCLUDING ATTORNEYS FEES AND COSTS OF DEFENSE ARISING FROM ANY CHANGES OR ALTERATIONS MADE BY ANYONE OTHER THAN THE LANDSCAPE ARCHITECT, OR FROM ANY REUSE OF THE DRAWINGS OR DATA WITHOUT THE PRIOR WRITTEN CONSENT OF THE LANDSCAPE ARCHITECT.

Sheet Title:
PROPOSED PHOTOMETRIC LIGHT LEVEL CALCULATIONS PLAN, GENERAL NOTES, AND LIGHT FIXTURE TABLE

Date of Drawing: 05/02/18
Scale: 1" = 20'-0"
Drawn By: MCD
Job Number: L18-032
Sheet Number:

PHO1.1

TO OBTAIN LOCATION OF PARTICIPANT'S UNDERGROUND FACILITIES BEFORE YOU DIG IN WISCONSIN

DIGGERS HOT LINE

WISCONSIN STATUTE 182.0175 (1974) REQUIRES A MINIMUM OF 3 DAYS NOTICE BEFORE YOU EXCAVATE (NOT INCLUDING SATURDAY, SUNDAY OR LEGAL HOLIDAYS)

UNDERGROUND SEWER AND UTILITY INFORMATION AS SHOWN IS OBTAINED FROM THE RECORDS OF MUNICIPALITY AND LOCAL UTILITY COMPANIES, THE ACCURACY OF WHICH CAN NOT BE GUARANTEED OR CERTIFIED TO.

TO OBTAIN LOCATION OF PARTICIPANT'S UNDERGROUND FACILITIES BEFORE YOU DIG IN WISCONSIN CALL THE MILWAUKEE UTILITY ALERT NETWORK

811
Know what's below. Call before you dig.

THE LOCATIONS OF EXISTING UTILITY INSTALLATIONS AS SHOWN ON THIS SURVEY ARE APPROXIMATE. THERE MAY BE OTHER UNDERGROUND UTILITY INSTALLATIONS WITHIN THE PROJECT AREA THAT ARE NOT SHOWN.

(800)-242-8511, (262) 432-7910
(877) 500-9592
www.DiggersHotLine.com

NOT FOR CONSTRUCTION - PRELIMINARY - FOR ESTIMATING AND REVIEW ONLY - DO NOT SCALE THESE DRAWINGS - These documents reflect progress & intent & may be subject to change, including additional notes and detail. These are not final construction documents and should not be used for final bidding or construction-related purposes.