

SITE PLAN SHEET INDEX	
C-100	DEMOLITION PLAN
C-101	PAVEMENT ID PLAN
C-102	EROSION CONTROL PLAN
C-103	GRADING PLAN
C-104	UTILITY PLAN
C-105	DETAILS
C-106	DETAILS
C-107	DETAILS
C-108	DETAILS
C-109	DETAILS
C-110	DETAILS



MSI GENERAL CORPORATION
 P.O. BOX 7
 OCONOMOWOC, WI 53066
 PHONE: 262-367-3661
 FAX: 262-367-7390
 WWW.MSIGENERAL.COM
 SINGLE SOURCE RESPONSIBILITY™

ISSUE DATES:
 Proposal: 10/31/18
 Bid:
 Contract:
 State Submittal / Permit:
 As-Built:

REVISIONS:	
1	P. C. SUBMITTAL 02-25-19
2	ADDR. CITY COMMENTS 05-10-19
3	
4	
5	
6	
7	
8	
9	
10	
11	
12	
13	
14	
15	
16	
17	
18	
19	
20	
21	
22	
23	
24	
25	
26	
27	
28	
29	
30	

KEY PLAN



PROJECT ADDRESS:
 PROJECT NAME
 avid™ hotels
 STREET ADDRESS
 Marshview Street
 CITY / STATE / ZIP
 Waukesha, WI 53186

ALL WORK TO BE COMPLETED AS SHOWN, AND IN ACCORDANCE WITH THE LATEST EDITION OF THE MSI GENERAL MASTER SPECIFICATION

Architect: CJO
 Engineer: JSD
 Reviewed By: XXX
 Sheet Title: DEMOLITION PLAN
 Sheet Number: C-100
 Project Number: P12269
P12269

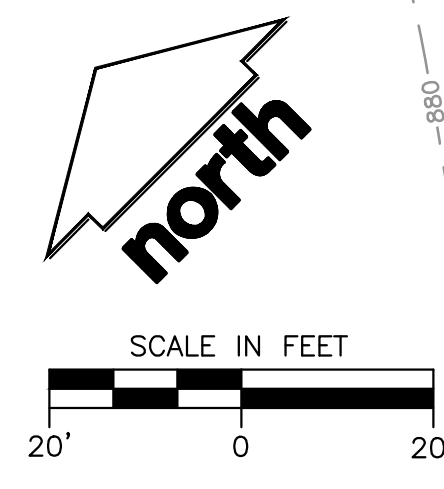
- DEMOLITION NOTES**
- REFER TO EROSION CONTROL PLAN COMPLETE SITE EROSION CONTROL NOTES.
 - ALL DEMOLITION WORK SHALL BE IN COMPLIANCE WITH CITY OF WAUKESHA REQUIREMENTS.
 - ALL DEBRIS SHALL BE REMOVED FROM THE SITE DAILY.
 - CONTRACTOR IS RESPONSIBLE TO NOTIFY CITY OF WAUKESHA OFFICIALS FOR ANY WORK WITHIN PUBLIC RIGHTS-OF WAY AND APPLY FOR ALL APPROPRIATE PERMITS.
 - CONTRACTOR SHALL PROTECT CITY OF WAUKESHA PAVEMENTS AND REPLACE IN ACCORDANCE WITH CITY REQUIREMENTS IF DAMAGED.
 - THE CONTRACTOR SHALL ASSUME SOLE RESPONSIBILITY FOR THE COMPUTATIONS OF ALL DEMOLITION ITEMS AND QUANTITIES.
 - CONTRACTOR IS RESPONSIBLE FOR CONTACTING APPROPRIATE UTILITY COMPANIES TO DETERMINE IF RELOCATION OF UTILITY POLES, TELEPHONE AND FIBER OPTICS BOXES, AND/OR OTHER UTILITIES WILL BE REQUIRED. CONTRACTOR SHALL NOTIFY OWNER FOR APPROVAL PRIOR TO RELOCATION OF SAID UTILITIES.
 - CONTRACTOR IS RESPONSIBLE FOR PROPER DISPOSAL OF MATERIALS.
 - CONTRACTOR SHALL RETAIN, ON-SITE, ALL AGGREGATE MATERIALS REMOVED DURING DEMOLITION. THE RE-PURPOSED AGGREGATE IS TO BE USED FOR NEW CONSTRUCTION WHERE APPROPRIATE. ANY UNUSED OR UNUSABLE PORTION OF MATERIALS SHALL BE REMOVED FROM THE CONSTRUCTION SITE AND SHALL BE RE-PURPOSED ELSEWHERE OR SHALL BE PROPERLY DISPOSED OF.
 - THE CONTRACTOR IS RESPONSIBLE FOR ANY ITEMS IN ADJACENT PROPERTIES THAT MAY BE DAMAGED DURING DEMOLITION OR CONSTRUCTION.

WETLAND DELINEATED BY
 DAVE MEYER OF WETLAND
 & WATERWAY CONSULTING,
 LLC ON OCT. 4, 2018
 FIELD LOCATED BY JSD
 PROFESSIONAL SERVICES
 ON OCT. 7, 2018
 22,734 SF (0.52 AC.)

LEGEND	
⊕	MANHOLE, TYPE UNKNOWN
⊙	SANITARY MANHOLE
⊗	STORM MANHOLE
⊚	CATCH BASIN ROUND
⊞	CATCH BASIN SQUARE
•	METAL POST
•	BOLLARD
Ⓜ	MAILBOX
CMP	CORRUGATED METAL PIPE
RCPC	REINFORCED CONCRETE PIPE
PVC	POLYVINYL CHLORIDE (PIPE)
CPP	CORRUGATED PLASTIC PIPE
⊥	POST INDICATOR VALVE
⊙	SIAMESE
⊥	OUTFALL PIPE
⊥	LIGHT POLE
⊥	FLOOD LIGHT
⊙	SPRINKLER CONTROL VALVE
⊕	WATER VALVE
⊙	FIRE HYDRANT
⊗	TELEPHONE PEDESTAL
⊗	SIGN
⊞	ELECTRICAL PED/TRANSFORMER
•	GAS VALVE
⊙	CONIFEROUS TREE
⊙	DECIDUOUS TREE
— W —	WATER MAIN
— SAN —	SANITARY SEWER
— ST —	STORM SEWER
— FIB —	FIBER OPTIC
— T —	UNDERGROUND TELEPHONE
— E —	UNDERGROUND ELECTRIC
— G —	UNDERGROUND GAS
— OH —	OVERHEAD UTILITY
— X —	FENCE LINE
⊗	EXISTING TREE REMOVAL
⊗	EXISTING CONCRETE REMOVAL
⊗	EXISTING PAVEMENT REMOVAL
— —	SAWCUT

DIGGERS HOTLINE
 Call 811 or (800) 242-8511
 Milwaukee Area (262) 432-7910
 Hearing Impaired TDD (800) 542-2289
 www.DiggersHotline.com

JSD Professional Services, Inc.
 Engineers • Surveyors • Planners
 MILWAUKEE REGIONAL OFFICE
 W238 N1610 BUSSE RD., STE 100
 WAUKESHA, WISCONSIN 53188
 262.513.0668 PHONE | 262.513.1232 FAX
 www.jsdinc.com
 JSD JOB NO.: 18-8713A
 JSD PROJ. MGR.: RWI



DEMOLITION PLAN 1" = 20'-0"

MANAGERS

ENGINEERS

CONTRACTORS

ARCHITECTS