

Waukesha Area Summary			V8 Prototype
Occupancy Use	Room Name	Square Footage	Square Footage
MERCANTILE (M)	SALES / VESTIBULE	14,053	14,809
	MEN'S ROOM	95	107
	WOMEN'S ROOM	108	107
	HALL	68	151
	EXIT CORRIDOR	356	
	SUBTOTAL (MERCANTILE)		14,680
BUSINESS (B)	OFFICE	323	289
	BREAK ROOM	352	419
SUBTOTAL (BUSINESS)		675	708
STORAGE / STOCK (S-1)	BACKROOM	7,034	3,376
	COOLER	1,045	1,313
	FREEZER	730	648
	MEAT COOLER	253	
	VMT CLOSET	121	
SUBTOTAL (STORAGE / STOCK)		9,183	5,337
SUBTOTAL (OCCUPANCIES)		24,538	21,219
EXTERIOR / INTERIOR WALLS / UNOCCUPIED SPACE		1,189	1,180
BUILDING SQUARE FOOTAGE		25,727	22,399
EXTERIOR CANOPY		499	1,283
TOTAL SQUARE FOOTAGE (INCLUDING CANOPY)		26,226	23,682

ITEM	OPERATIONS DATA	
	Waukesha	V8.0 Prototype
LINEAR FOOTAGE OF BASE (PRODUCE INCLUDED)	887'-8"	906'-2"
ASSUMED PALLET STORAGE	95	76
BUILDING DIMENSIONS	100'-0" x 248'-0"	119'-4" x 178'-0"
SALES FLOOR DIMENSIONS	83'-10 1/4" x 170'-6 3/4"	74'-6" x 175'-9"
LENGTH OF MULTIDECK	104'	116'
COOLER MILK DOORS	4	4
COOLER GENERAL DOORS	12	12
FREEZER GENERAL DOORS	16	16
SPOT MERCHANDISERS	7	13
CART STORAGE	(120) MODEL 563W	(144) MODEL 563W

Issued:	Date:
A Issued for Use/Reference	04/03/18
B Revised for Code and Comments	04/05/18
C Issued for Planning Review	04/23/18
D	
E	

Revisions:	Date:
1	
2	
3	
4	
5	
6	
7	
8	
9	

Seal	Seal
PROJECT ARCHITECT/ENGINEER	DATE
PROJECT LEAD	DATE
PROJECT DESIGNER	DATE

Copyright © 2017  
 APD Engineering & Architecture, PLLC  
 Drawing Alteration  
 It is a violation of law for any person, unless acting under the direction of licensed Architect, Professional Engineer, Landscape Architect, or Land Surveyor to alter any item on this document in any way. Any licensee who alters this document is required by law to affix his or her seal and to add the notation "Altered By" followed by his or her signature and the specific description of the alteration or revision.  
 [DO NOT SCALE PLANS]  
 Copying, Printing, Software and other processes required to produce these prints can stretch or shrink the actual paper or layout. Therefore, scaling of this drawing may be inaccurate. Contact APD E&A with any need for additional dimensions or clarifications.

**APD ENGINEERING & ARCHITECTURE, PLLC**  
 615 Fishers Run  
 Victor, NY 14564  
 585.742.2222  
 585.924.4914 fax  
 www.apd.com

**ALDI Inc.**  
 1200 N. Kirk Road  
 Batavia, IL 60510  
 (630) 879-8100  
 (630) 879-8152 fax

ALDI Inc. Store #: 49  
 Waukesha WI  
 Waukesha, WI  
 Waukesha County  
 Project Name & Location:

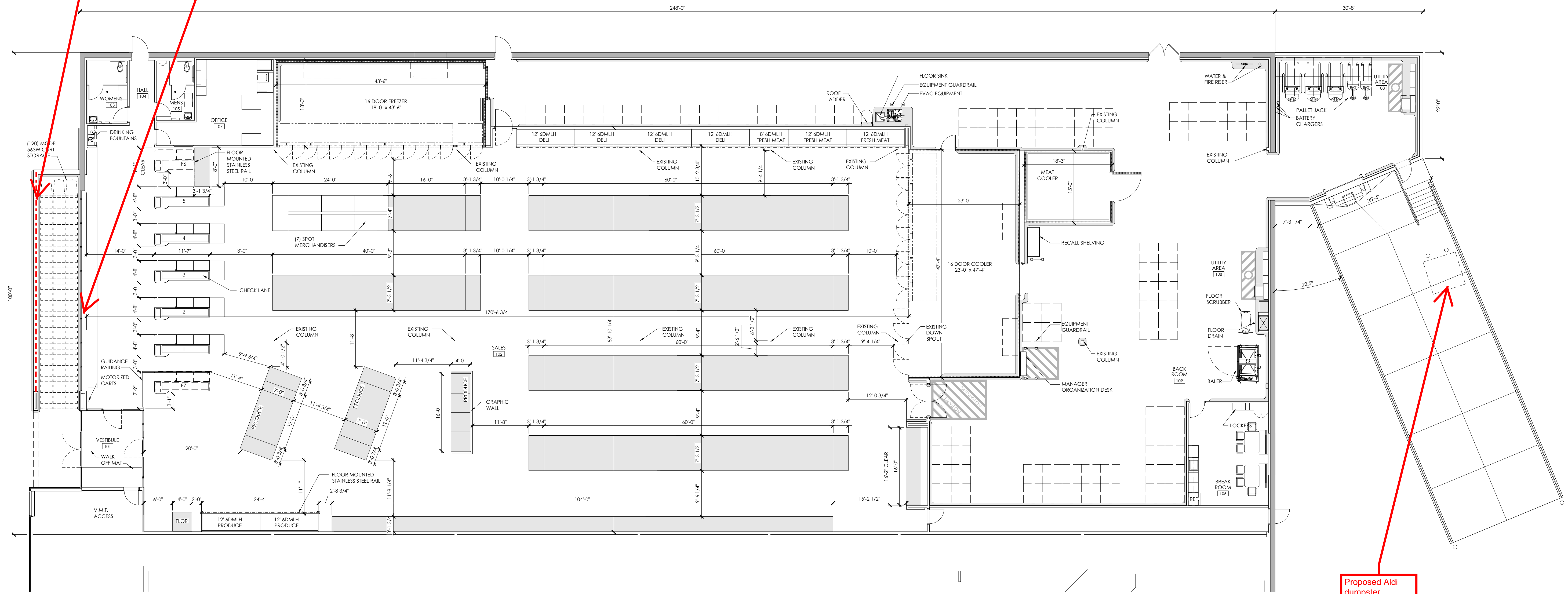
CONCEPT PLAN	
Drawing Name:	Project No.
Date: 09/20/17	18-0173A
Type: RETROFIT	
Drawn By: JDB	CFP-2
Scale: As Noted	Drawing No.

Cart corral under cover of canopy and enclosed by non-insulated glass on low masonry wall

Insulated window line

Proposed Aldi dumpster

PLOTTED: 4/23/2018 11:05 AM \\APD6-FPA-VN\Jobs\173 - ALDI - OAK 49 - SW Waukesha WI\Buildings\CAD\Drawings\Concept\Waukesha WI - CFP-1.dwg



1 Operations Plan  
 SCALE: 3/32" = 1'-0"