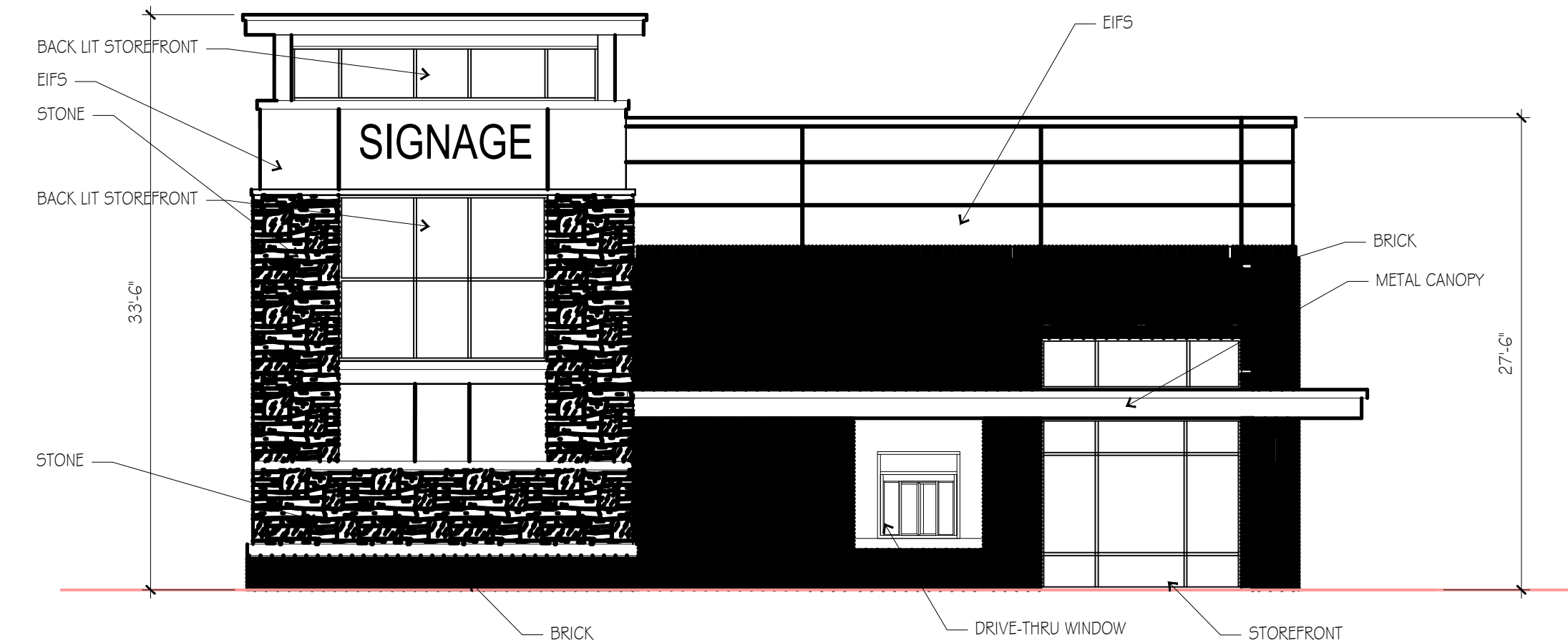
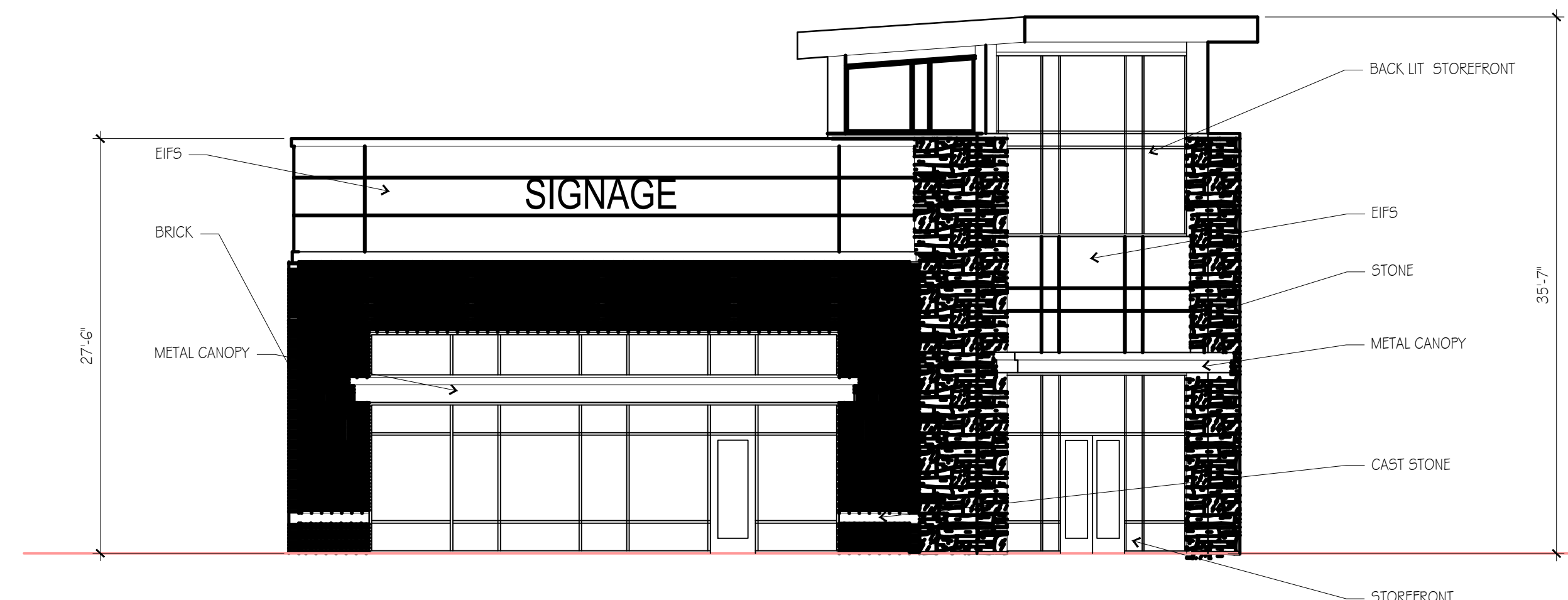


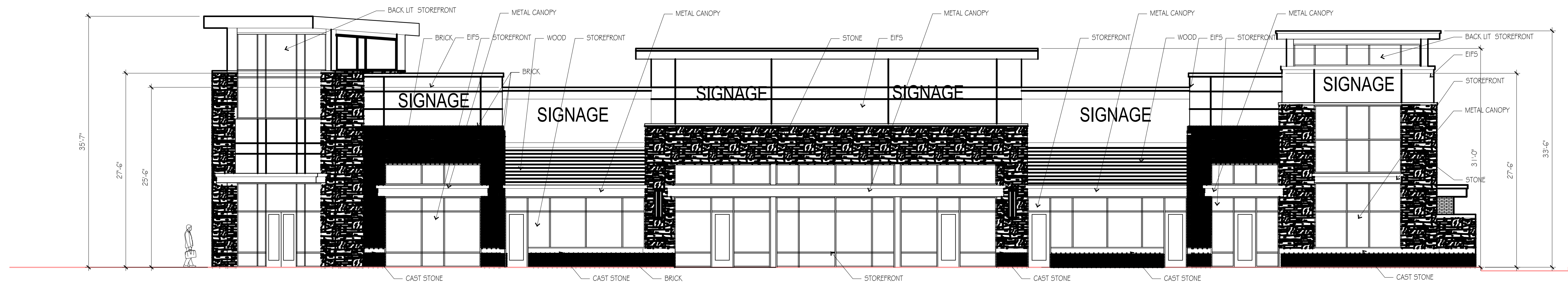
ANGLED ENTRANCE (12)
SCALE: 3/16" = 1'-0"



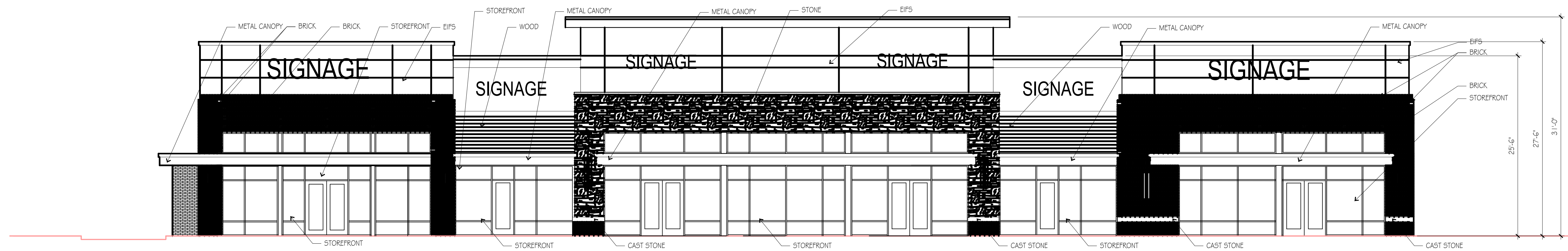
WEST ELEVATION (8)
SCALE: 3/16" = 1'-0"



EAST ELEVATION (4)
SCALE: 3/16" = 1'-0"



NORTH ELEVATION (2)
SCALE: 3/16" = 1'-0"



SOUTH ELEVATION (1)
SCALE: 1/8" = 1'-0"

THIS DRAWING has been prepared by the Architect, or prepared under his direct supervision as an instrument of service and is intended for use only on this project. All Drawings, Specifications, Ideas and designs, including the overall layout, form, arrangement, and composition of spaces and elements portrayed, constitute the original, unpublished Work of the Architect. Any reproduction, use, or disclosure of the information contained herein without the written consent of the Architect is strictly prohibited.

© 2019 H.C. KLOVER ARCHITECT

THE ARCHITECT DISCLAIMS responsibility for the existing building structure, site conditions, existing construction elements, or any documents, drawings or other instruments used for any part of this Project which do not bear the Architect's seal. The Architect's services are undertaken only in the interest of the Project Owner. No obligation is assumed by the Architect for the benefit of any other entity.

RELATED DOCUMENTS: This Drawing is a single component of an integrated set of Construction Documents. General and Supplementary Conditions of the Contract, General Requirements, Specifications and other Drawings may affect the Work described. Failure to review and integrate the entire set of the whole of its Construction Documents does not relieve the Contractor from providing a complete Project.

COMPLY with all laws, codes, ordinances and regulations with authorities having jurisdiction and with requirements of the Contract, if applicable. Do not start Work until all permits and required approvals are obtained.

VERIFY ALL CONDITIONS and dimensions prior to construction. Commencement of work constitutes verification and acceptance of all existing conditions. Application of a material or equipment item to Work installed by others constitutes acceptance of that Work, and acceptance of responsibility for satisfactory installation.

DIMENSIONS SHOWN on to each face of a material unless otherwise indicated. EXCLUDE a 3/8" dimension - 30 NOT SHOWN always unless otherwise directed.

project title

CFT & PANDA
WAWKESHA
2720 N GRANDVIEW BLVD
WAWKESHA, WI 53188

project number 14045.004

drawing issuance	PRELIM PLANNING	05.15.17
drawing revisions	No.	Description Date

professionalseal

drawing title PRELIMINARY ELEVATIONS
drawing number **A200**