



Job Name:
Boucher Lots - 3 Combined

Catalog Number:
GLEON-AF-09-LED-E1-5WQ-WH-EA
MA1197-WH
Notes:

Type:
OA

ELL17-70049

McGraw-Edison

DESCRIPTION

The Galleon™ LED Flood luminaire combines the low-profile design of the Galleon with the mounting angle flexibility of a pole or wall-mounted floodlight. With a maximum tilt angle of 60° from horizontal, and patented, high-efficiency AccuLED Optics™ technology, it provides uniform and energy conscious illumination for parking lots, container/rail yards and highway projects. Mounts direct to pole or to a, bullhorn or pole-top tenon. IP66 rated and UL/cUL Listed for wet locations.

Catalog #		Type	
Project		Date	
Comments			
Prepared by			

SPECIFICATION FEATURES

Construction

Extruded aluminum driver enclosure thermally isolated from Light Squares for optimal thermal performance. Heavy-wall, die-cast aluminum and caps enclose housing and die-cast aluminum heat sinks. A unique, patent pending interlocking housing and heat sink provides scalability with superior structural rigidity, 3G vibration and IP66 rated up to 60° from horizontal. Optional tool-less hardware available for ease of entry into electrical chamber.

Optics

Patented, high-efficiency injection-molded AccuLED Optics technology. Optics are precisely designed to shape the distribution maximizing efficiency and application spacing. AccuLED Optics create consistent distributions with the scalability to meet customized application requirements. Offered standard in 4000K (+/- 275K) CCT 70 CRI.

Optional 6000K CCT, 5000K CCT and 3000K CCT.

Electrical

LED drivers are mounted to removable tray assembly for ease of maintenance. 120-277V 50/60Hz, 347V 60Hz or 480V 60Hz operation. 480V is compatible for use with 480V Wye systems only. Standard with 0-10V dimming. Shipped standard with our proprietary circuit module designed to withstand 10kV of transient line surge. The Galleon LED Flood luminaire is suitable for operation in -40°C to 40°C ambient environments. For applications with ambient temperatures exceeding 40°C, specify the HA (High Ambient) option. Light Squares are IP66 rated. Greater than 90% lumen maintenance expected at 60,000 hours. Available in standard 1A drive current and optional 600mA, 800mA and 1200mA drive currents (nominal).

Mounting

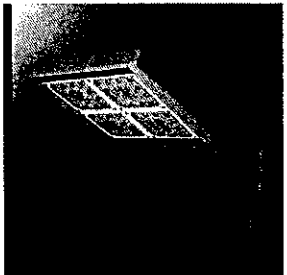
Cast aluminum knuckle arm mounts directly to fixture housing, and is available with either commercial pole mount or slipfitter for bullhorn, pipe or tenon mount. Can be tilted up to 60° from horizontal without compromising vibration or IP rating.

Finish

Housing finished in super durable TGIC polyester powder coat paint, 2.5 mil nominal thickness for superior protection against fade and wear. Heat sink is powder coated black. Standard housing colors include black, bronze, grey, white, dark platinum and graphite metallic. RAL and custom color matches available.

Warranty

Five-year warranty.

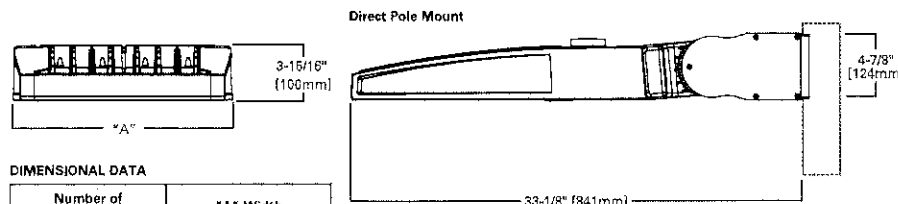


GLEON GALLEON LED FLOOD

1-10 Light Squares
Solid State LED

FLOODLIGHT LUMINAIRE

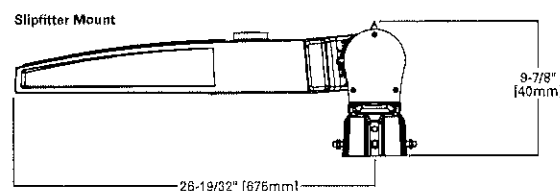
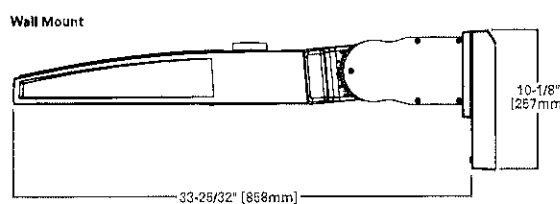
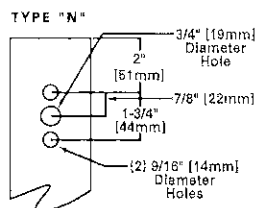
DIMENSIONS



DIMENSIONAL DATA

Number of Light Squares	"A" Width
1-4	16-1/2" (394mm)
6-8	21-5/8" (549mm)
7-8	27-6/8" (702mm)
9-10	33-3/4" (857mm)

DRILLING PATTERN



CERTIFICATION DATA

UL/cUL Wet Location Listed
ISO 9001
LM79 / LM80 Compliant
3G Vibration Rated up to 60° from Horizontal
IP66 Rated up to 60° from Horizontal
DesignLights Consortium™ Qualified*

ENERGY DATA

Electronic LED Driver
>0.9 Power Factor
<20% Total Harmonic Distortion
120V-277V 50/60Hz
347V & 480V 60Hz
-40°C Min. Temperature
40°C Max. Temperature
60°C Max. Temperature (HA Option)



*www.designlights.org



TD506001EN
2016-09-28 16:04:29