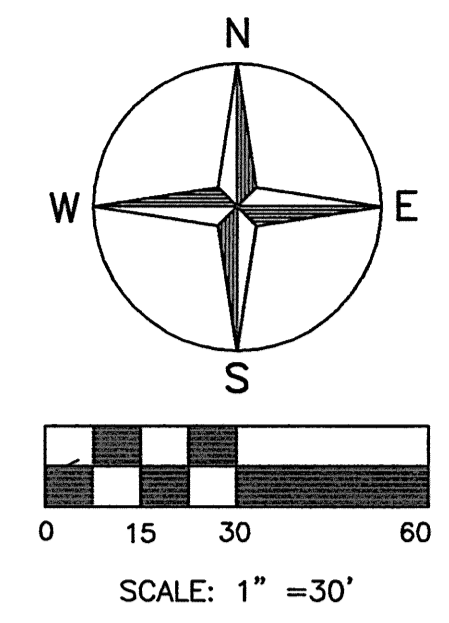


- LEGEND**
- IRON PIPE FOUND
  - × 62.69 EXISTING SPOT ELEVATION
  - 59.8 EXISTING TOPOGRAPHY
  - 60.1
  - ⊕ HYDRANT
  - ⊕ CATCH BASIN
  - ⊕ SANITARY SEWER
  - ⊕ LIGHT POLE
  - ⊕ UTILITY POLE
  - ⊕ GUY WIRE
  - ⊕ TELEPHONE PEDESTAL
  - ⊕ MONITOR WELL
  - ⊕ GAS METER
  - ⊕ GAS VALVE
  - ⊕ WATER VALVE
  - ⊕ SIGN POST
  - ⊕ GAS LATERAL
  - ⊕ WATER MAIN
  - ⊕ 4" DIA HOLLOW POST CUT OFF @ GROUND
  - ⊕ EXISTING FENCE

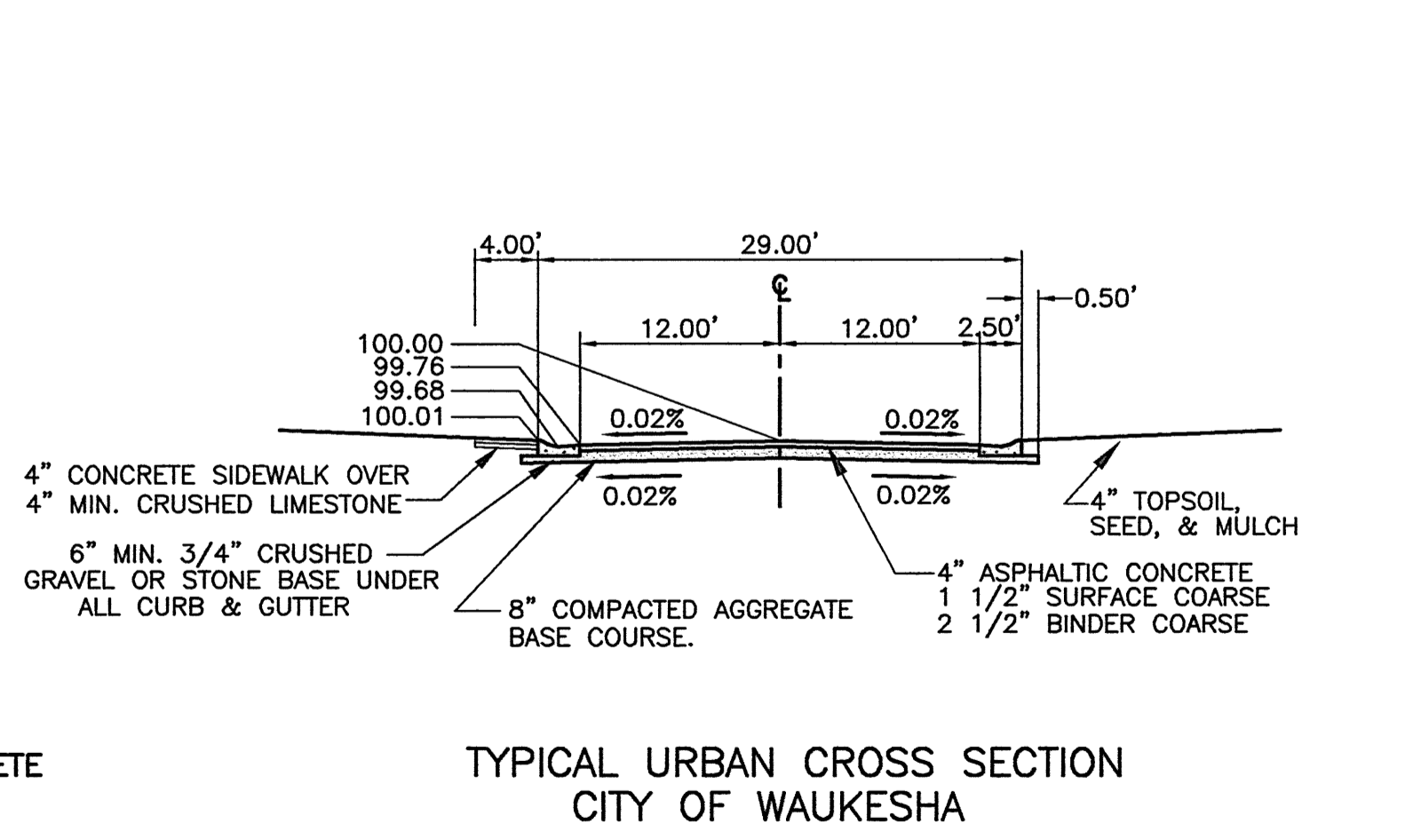
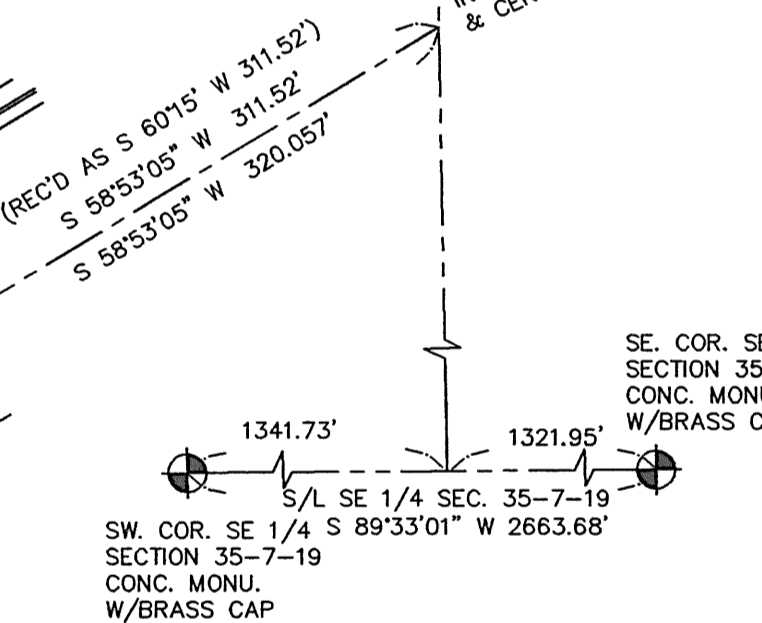
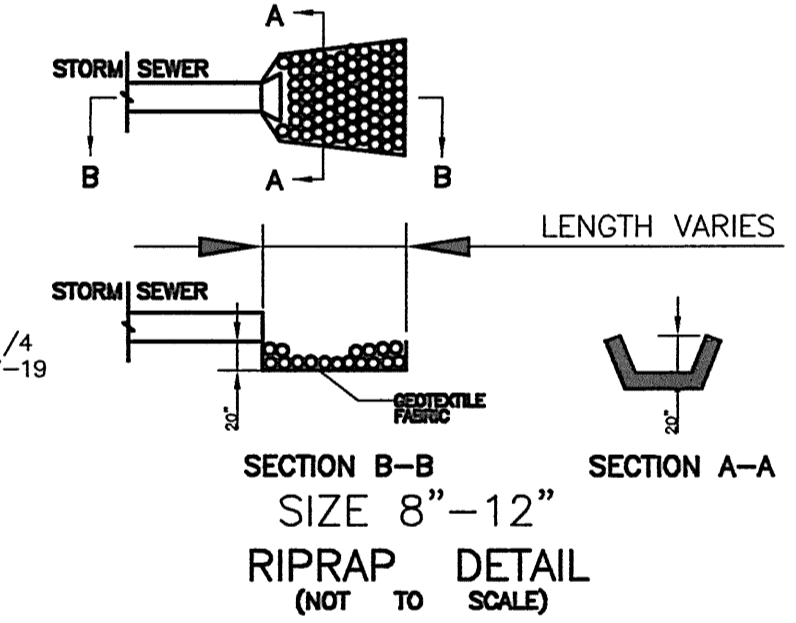


**PLAN INDEX:**

PAGE 1 STORM SEWER & PAVING SYSTEM PLAN  
 PAGE 2 IN: RIDGE CREEK CIRCLE &  
 IN: EASEMENTS  
 PAGE 3 IN: EASEMENTS  
 PAGE 4 DETAILED PAVING PLAN

**CASTING SCHEDULE**

STRUCTURE #	CASTING #
C.B. 132	R-3501-TR
C.B. 131	R-3501-TR
C.B. 130	R-3501-TL
MH 126	R-2561
C.B. 125	R-3228-K
C.B. 124	R-3501-TL
MH 123A	R-3501-TR
MH 123	R-3501-TL
MH 122	R-3228-K
C.B. 122A	R-3228-K
C.B. 121A	R-3228-K
MH 121	R-3228-K
C.B. 113A	R-3501-TL
C.B. 113	R-3501-TL
C.B. 112C	R-3501-TL
C.B. 112B	R-3501-TR
C.B. 112A	R-3501-TR
MH 111	R-3501-TR
MH 111	R-1661



NO.	REVISIONS	BY	DATE
1	ADDED OWNERS REVISIONS	KKK	8-04-06
2	ADDED GENERAL REVISIONS	KKK	11-07-06
3	ADDED GENERAL REVISIONS	KKK	12-20-06

DESIGNED BY:  
K. K. KLIMECK

DRAWN BY:  
K. K. KLIMECK

CHECKED BY:  
K. K. KLIMECK

SCALE:  
1" = 30' HORIZ.

DATE:  
FEBRUARY 24, 2006

**PIONEER ENGINEERING AND SURVEYING, LLC.**  
 CONSULTANTS IN SUBDIVISIONS AND COMMERCIAL DEVELOPMENTS  
 3902 C.T.H. "B"  
 JOHNSON CREEK, WI. 53038  
 (920) 699 - 3330 FAX: 699 - 3332

**STORM SEWER SYSTEM PLAN FOR THE RIDGE AT WOODLAND CREEK CONDOMINIUMS**

MUNIC. PROJ. NO.	PIONEER PROJ. NO.
CITY OF WAUKESHA	05-05
APPROVED BY	PIONEER SHT. NO.
	PAGE 1 OF 4
CITY ENGINEER DATE	PIONEER FILE NO.
	05-05

THE LOCATION OF UNDERGROUND STRUCTURES OR FACILITIES SHOWN ON THE PLANS ARE BASED ON AVAILABLE RECORDS AT THE TIME OF PLAN PREPARATION & ARE NOT GUARANTEED TO BE COMPLETE OR CORRECT. THE CONTRACTOR IS RESPONSIBLE FOR CONTACTING ALL UTILITIES 72 HOURS PRIOR TO CONSTRUCTION TO DETERMINE THE EXACT LOCATION OF ALL FACILITIES AND TO PROVIDE ADEQUATE PROTECTION DURING THE COURSE OF THE WORK.