



MSI GENERAL CORPORATION  
 P.O. BOX 7  
 OCONOMOWOC, WI 53066  
 PHONE: 262-367-3661  
 WWW.MSIGENERAL.COM  
 SINGLE SOURCE RESPONSIBILITY

Date	Description
2017/09/18	DETAILED PROTOTYPE DRAWINGS



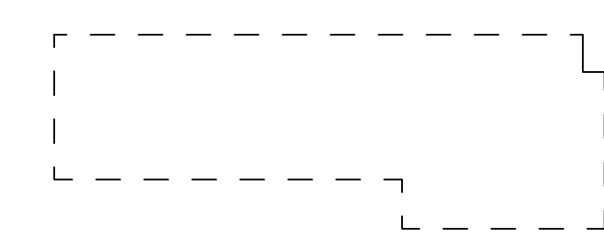
ALL WORK TO BE COMPLETED AS SHOWN AND IN ACCORDANCE WITH THE LATEST EDITION OF THE MSI GENERAL MASTER SPECIFICATION.

- 01 PROVIDE 2 HOUR SHAFT TERMINATION AT CEILING PER IBC 713.11
- 02 FIRE ALARM PULL STATION

**GENERAL NOTES**

- FLOOR PLAN:**
- A. RE: G0.10 FOR LEGENDS, SYMBOLS AND ABBREVIATIONS.
  - B. RE: G0.20 FOR CODE ANALYSIS RELATED TO PROJECT.
  - C. MULTIPLE DOORS INTO A SINGLE ROOM HAVE AN ALPHABETICAL DESIGNATION. RE: A10.10 FOR DOOR SCHEDULE AND TYPES.
  - D. COORDINATE AND PROVIDE BLOCKING FOR MILLWORK AND ITEMS ATTACHED OR MOUNTED TO PARTITIONS OR CEILINGS.
  - E. PARTITIONS ARE DIMENSIONED FROM FINISH FACE TO FINISH FACE. UNO. MAINTAIN DIMENSIONS MARKED "CLEAR". ALLOW FOR THICKNESSES AND MOUNTING OF FINISHES.
  - F. RE: A9.00 FOR PARTITION TYPES
  - G. RE: A3.00 SERIES FOR ENLARGED PUBLIC/BOH AND GUESTROOM PLANS.
  - H. FEC - RECESSED FIRE EXTINGUISHER CABINETS. PROVIDE RATED CABINETS WHEN INSTALLED IN RATED PARTITIONS.
  - I. PROVIDE FLOOR NUMBER SIGNS ON DOORS WITHIN EACH STAIRWAY.
  - J. PROVIDE FLOOR DRAINS AND WATER SUPPLY LINES AS REQUIRED FOR ALL PROPOSED EQUIPMENT.
  - K. COORDINATE WITH ELECTRICAL FOR SITE LIGHTING.
  - L. COORDINATE WITH IHG FOR APPROVAL OF MARKINGS FOR FLOOR TO CEILING WINDOWS, GLASS WALLS AND GLASS DOORS.

**KEY PLAN**



**NOT FOR CONSTRUCTION**

Project Name  
 avid™ hotels

Project Number  
 05/13/19

Description  
 LEVEL 01 - FLOOR PLAN

Scale  
 1/8" = 1'-0"

**A2.01**



**LEVEL 01 - FLOOR PLAN**  
 SCALE: 1/8" = 1'-0"



MSI GENERAL CORPORATION  
P.O. BOX 7  
OCONOMOWOC, WI 53066  
PHONE: 262-367-3661

WWW.MSIGENERAL.COM  
SINGLE SOURCE RESPONSIBILITY

Date Description  
2017/09/18 DETAILED PROTOTYPE DRAWINGS



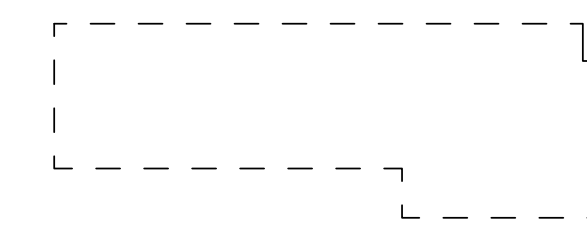
ALL WORK TO BE COMPLETED AS SHOWN AND IN ACCORDANCE WITH THE LATEST EDITION OF THE MSI GENERAL MASTER SPECIFICATION.

**GENERAL NOTES**

**FLOOR PLAN:**

- A. RE: G0.10 FOR LEGENDS, SYMBOLS AND ABBREVIATIONS.
- B. RE: G0.20 FOR CODE ANALYSIS RELATED TO PROJECT.
- C. MULTIPLE DOORS INTO A SINGLE ROOM HAVE AN ALPHABETICAL DESIGNATION. RE: A10.10 FOR DOOR SCHEDULE AND TYPES.
- D. COORDINATE AND PROVIDE BLOCKING FOR MILLWORK AND ITEMS ATTACHED OR MOUNTED TO PARTITIONS OR CEILINGS.
- E. PARTITIONS ARE DIMENSIONED FROM FINISH FACE TO FINISH FACE. UNO. MAINTAIN DIMENSIONS MARKED "CLEAR". ALLOW FOR THICKNESSES AND MOUNTING OF FINISHES.
- F. RE: A9.00 FOR PARTITION TYPES
- G. RE: A3.00 SERIES FOR ENLARGED PUBLIC/BOH AND GUESTROOM PLANS.
- H. FEC - RECESSED FIRE EXTINGUISHER CABINETS. PROVIDE RATED CABINETS WHEN INSTALLED IN RATED PARTITIONS.
- I. PROVIDE FLOOR NUMBER SIGNS ON DOORS WITHIN EACH STAIRWAY.
- J. PROVIDE FLOOR DRAINS AND WATER SUPPLY LINES AS REQUIRED FOR ALL PROPOSED EQUIPMENT.
- K. COORDINATE WITH ELECTRICAL FOR SITE LIGHTING.
- L. COORDINATE WITH IHG FOR APPROVAL OF MARKINGS FOR FLOOR-TO-CEILING WINDOWS, GLASS WALLS AND GLASS DOORS.

**KEY PLAN**



**NOT FOR CONSTRUCTION**

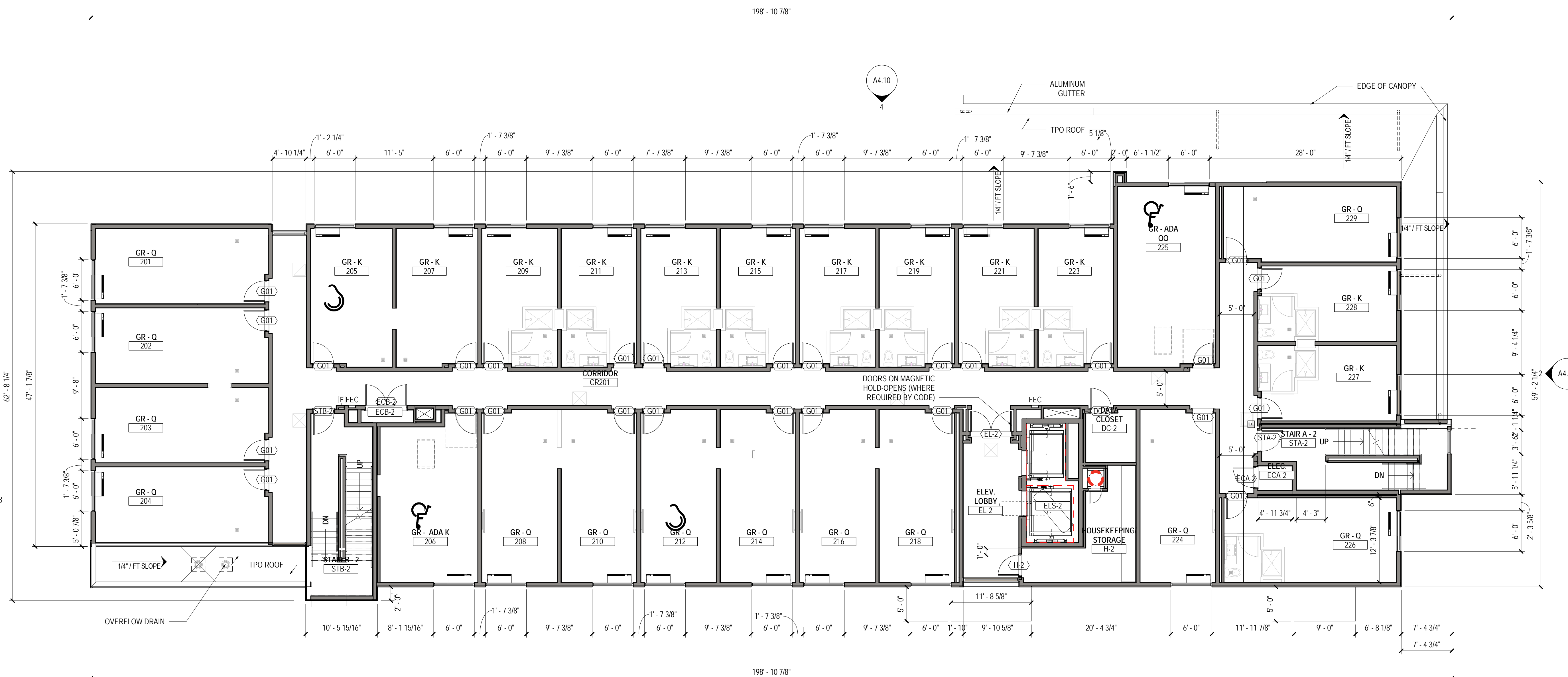
Project Name  
avid™ hotels

Project Number  
05/13/19

Description  
LEVEL 02 - FLOOR PLAN

Scale  
1/8" = 1'-0"

**A2.02**



**LEVEL 02 - FLOOR PLAN**

SCALE: 1/8" = 1'-0"

**01**





MSI GENERAL CORPORATION  
 P.O. BOX 7  
 OCONOMOWOC, WI 53066  
 PHONE: 262-367-3661  
 WWW.MSIGENERAL.COM  
 SINGLE SOURCE RESPONSIBILITY

Date	Description
2017/09/18	DETAILED PROTOTYPE DRAWINGS



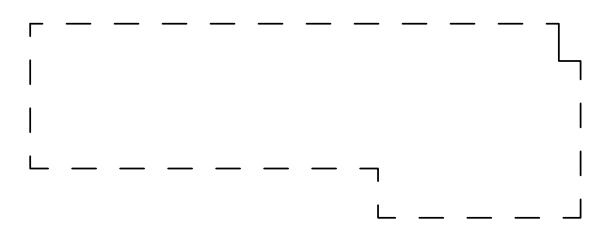
ALL WORK TO BE COMPLETED AS SHOWN AND IN ACCORDANCE WITH THE LATEST EDITION OF THE MSI GENERAL MASTER SPECIFICATION.

### GENERAL NOTES

#### FLOOR PLAN:

- A. RE: G0.10 FOR LEGENDS, SYMBOLS AND ABBREVIATIONS.
- B. RE: G0.20 FOR CODE ANALYSIS RELATED TO PROJECT.
- C. MULTIPLE DOORS INTO A SINGLE ROOM HAVE AN ALPHABETICAL DESIGNATION. RE: A10.10 FOR DOOR SCHEDULE AND TYPES.
- D. COORDINATE AND PROVIDE BLOCKING FOR MILLWORK AND ITEMS ATTACHED OR MOUNTED TO PARTITIONS OR CEILINGS.
- E. PARTITIONS ARE DIMENSIONED FROM FINISH FACE TO FINISH FACE. UNO. MAINTAIN DIMENSIONS MARKED "CLEAR". ALLOW FOR THICKNESSES AND MOUNTING OF FINISHES.
- F. RE: A9.00 FOR PARTITION TYPES
- G. RE: A3.00 SERIES FOR ENLARGED PUBLIC/BOH AND GUESTROOM PLANS.
- H. FEC - RECESSED FIRE EXTINGUISHER CABINETS. PROVIDE RATED CABINETS WHEN INSTALLED IN RATED PARTITIONS.
- I. PROVIDE FLOOR NUMBER SIGNS ON DOORS WITHIN EACH STAIRWAY.
- J. PROVIDE FLOOR DRAINS AND WATER SUPPLY LINES AS REQUIRED FOR ALL PROPOSED EQUIPMENT.
- K. COORDINATE WITH ELECTRICAL FOR SITE LIGHTING.
- L. COORDINATE WITH IHG FOR APPROVAL OF MARKINGS FOR FLOOR-TO-CEILING WINDOWS, GLASS WALLS AND GLASS DOORS.

### KEY PLAN



**NOT FOR CONSTRUCTION**

Project Name  
 avid™ hotels

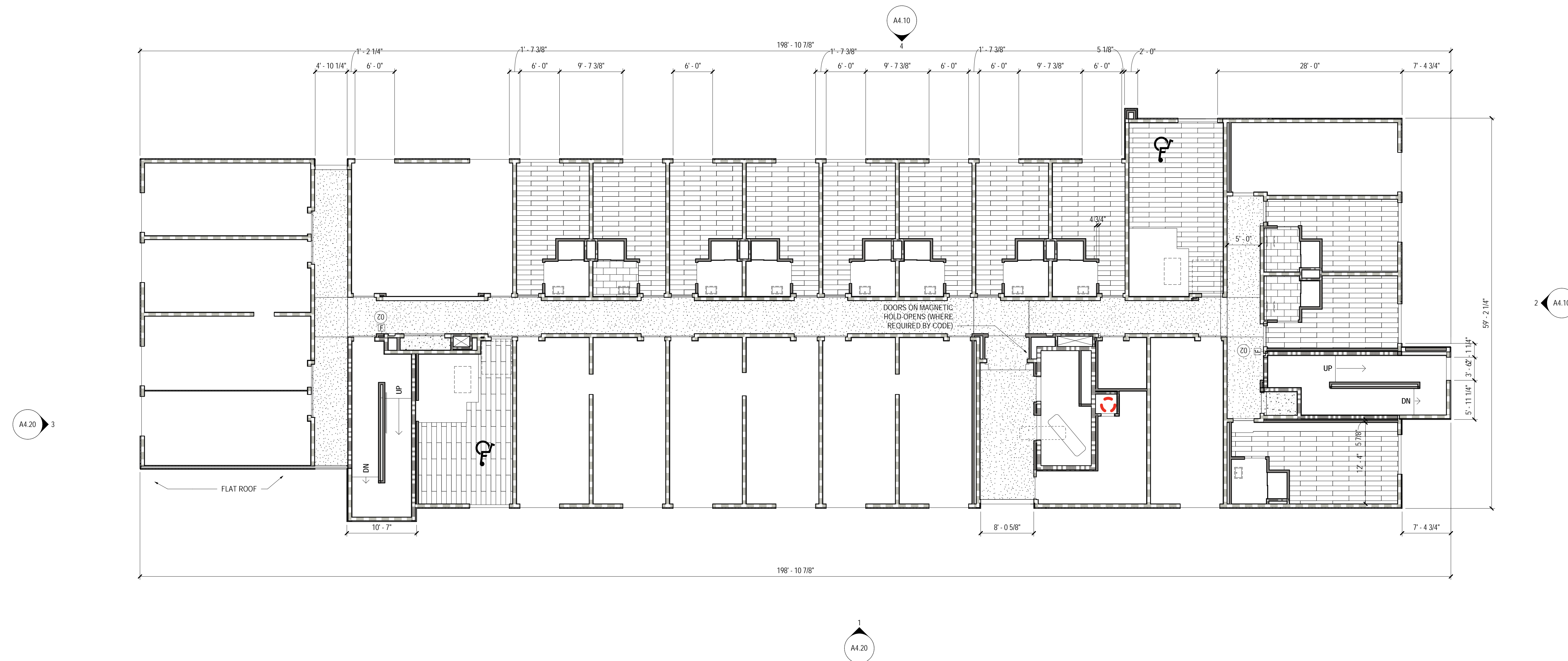
Project Number  
 05/13/19

Description  
 LEVEL 03 - FLOOR PLAN

Scale  
 1/8" = 1'-0"

**A2.03**

© 2018 IHG



**LEVEL 03 - FLOOR PLAN**  
 SCALE: 1/8" = 1'-0"



MSI GENERAL CORPORATION  
P.O. BOX 7  
OCONOMOWOC, WI 53066  
PHONE: 262-367-3661

WWW.MSIGENERAL.COM  
SINGLE SOURCE RESPONSIBILITY

Date	Description
2017/09/18	DETAILED PROTOTYPE DRAWINGS



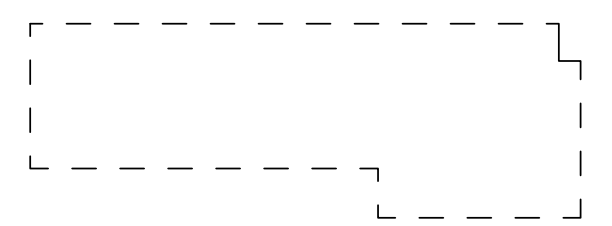
ALL WORK TO BE COMPLETED AS SHOWN AND IN ACCORDANCE WITH THE LATEST EDITION OF THE MSI GENERAL MASTER SPECIFICATION.

### GENERAL NOTES

#### FLOOR PLAN:

- A. RE: G0.10 FOR LEGENDS, SYMBOLS AND ABBREVIATIONS.
- B. RE: G0.20 FOR CODE ANALYSIS RELATED TO PROJECT.
- C. MULTIPLE DOORS INTO A SINGLE ROOM HAVE AN ALPHABETICAL DESIGNATION. RE: A10.10 FOR DOOR SCHEDULE AND TYPES.
- D. COORDINATE AND PROVIDE BLOCKING FOR MILLWORK AND ITEMS ATTACHED OR MOUNTED TO PARTITIONS OR CEILINGS.
- E. PARTITIONS ARE DIMENSIONED FROM FINISH FACE TO FINISH FACE. UNO. MAINTAIN DIMENSIONS MARKED "CLEAR" ALLOW FOR THICKNESSES AND MOUNTING OF FINISHES.
- F. RE: A9.00 FOR PARTITION TYPES
- G. RE: A3.00 SERIES FOR ENLARGED PUBLIC/BOH AND GUESTROOM PLANS.
- H. FEC - RECESSED FIRE EXTINGUISHER CABINETS. PROVIDE RATED CABINETS WHEN INSTALLED IN RATED PARTITIONS.
- I. PROVIDE FLOOR NUMBER SIGNS ON DOORS WITHIN EACH STAIRWAY.
- J. PROVIDE FLOOR DRAINS AND WATER SUPPLY LINES AS REQUIRED FOR ALL PROPOSED EQUIPMENT.
- K. COORDINATE WITH ELECTRICAL FOR SITE LIGHTING.
- L. COORDINATE WITH IHG FOR APPROVAL OF MARKINGS FOR FLOOR TO CEILING WINDOWS, GLASS WALLS AND GLASS DOORS.

### KEY PLAN



**NOT FOR CONSTRUCTION**

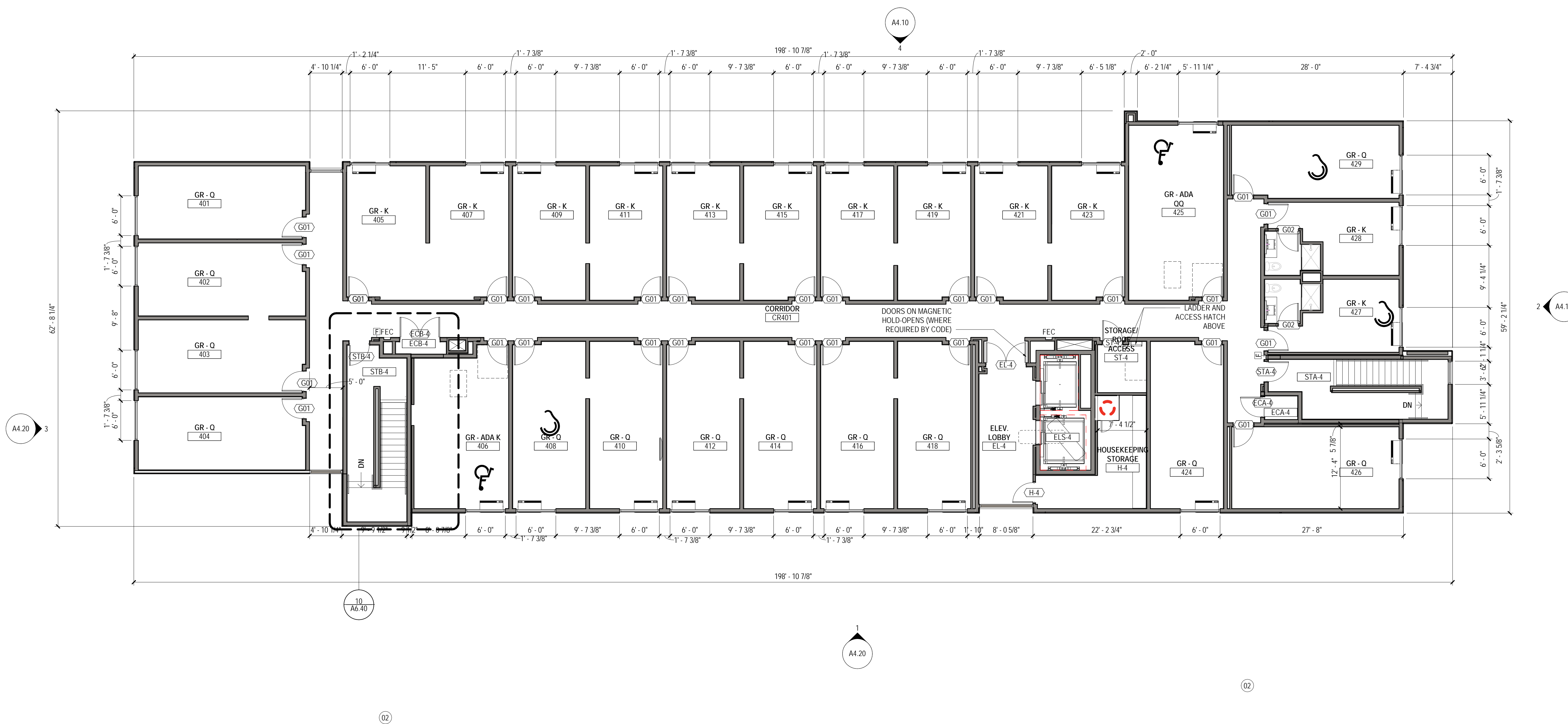
Project Name  
avid™ hotels

Project Number  
05/13/19

Description  
LEVEL 04 - FLOOR PLAN

Scale  
1/8" = 1'-0"

**A2.04**



LEVEL 04 - FLOOR PLAN  
SCALE: 1/8" = 1'-0"





MSI GENERAL CORPORATION  
P.O. BOX 7  
OCONOMOWOC, WI 53066  
PHONE: 262-367-3661

WWW.MSIGENERAL.COM  
SINGLE SOURCE RESPONSIBILITY

Date	Description
2017/09/18	DETAILED PROTOTYPE DRAWINGS



ALL WORK TO BE COMPLETED AS SHOWN AND IN ACCORDANCE WITH THE LATEST EDITION OF THE MSI GENERAL MASTER SPECIFICATION.

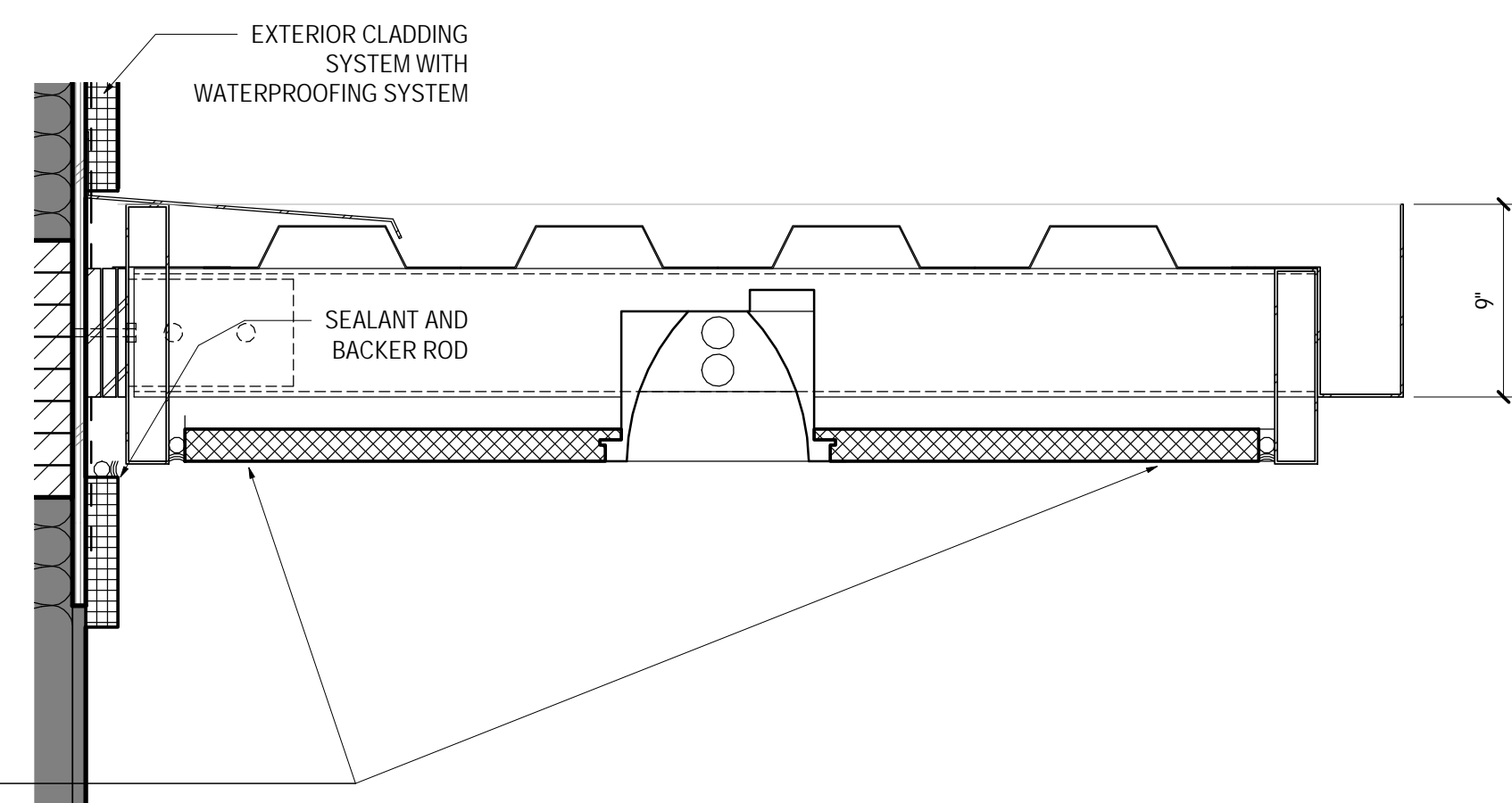
**SHEET NOTES**

- 01 INTEGRATED EXTERIOR WINDOW AND PTAC LOUVER
- 02 EXTERIOR CLADDING WITH WATERPROOFING SYSTEM
- 03 METAL COPING
- 04 EXTERIOR STOREFRONT WINDOWS
- 05 EXTERIOR CLADDING SYSTEM BENEATH CANOPY AND ADJACENT WING WALLS
- 06 SINGLE SLIDING GLASS DOOR
- 07 ELEVATOR OVERRUN BEYOND
- 08 8" CAST STONE BASE
- 09 EXTERIOR ALUMINUM WINDOW, TYP.
- 10 EXTERIOR HOLLOW METAL DOORS PAINTED TO MATCH WALLS, TYP.
- 11 3/4" CONTROL JOINT
- 12 3/4" REVEAL
- 14 ENTRANCE CANOPY WITH TPO ROOF
- 15 STOREFRONT DOOR
- 17 3'-0"x3'-0" HOT WATER TANK INTAKE EXHAUST
- 18 LAUNDRY EXHAUST, COORDINATE WITH MANUFACTURER FOR LOUVER SIZES AND LOCATIONS - ALIGN EDGES OF LOUVER WITH WINDOW ABOVE IF FEASIBLE
- 20 PREFABRICATED CANOPY
- 21 SCUPPER, PAINTED TO MATCH ADJACENT WALL
- 23 EXTERIOR LIGHT FIXTURE, RE: ELECT. AND LIGHTING DWGS
- 24 POTENTIAL LOCATION FOR BUILDING SIGNAGE, PROVIDE ELECTRICAL SERVICE TO LOCATIONS WHERE SIGNAGE TO BE INSTALLED. REFER IHG SIGNAGE GUIDELINES FOR MORE INFORMATION.
- 25 BURNISHED BLOCK VENEER 16" X 24"
- 26 NICHHA PANEL SYSTEM

**GENERAL NOTES**



**SOUTH ELEVATION**  
SCALE: 1/8" = 1'-0" **4**



EXTERIOR CLADDING SYSTEM EC-04 (AQUA COLOR ON THE UNDERSIDE OF THE CANOPY)  
**EXTERIOR WALL DETAIL - CANOPY**  
SCALE: 1 1/2" = 1'-0" **3**

EXTERIOR CLADDING SYSTEM EC-4 (AQUA COLOR ON THE UNDERSIDE OF THE CANOPY)

EXTERIOR CLADDING SYSTEM EC-4 (AQUA COLOR ON THE UNDERSIDE OF THE CANOPY)



**EAST ELEVATION**  
SCALE: 1/8" = 1'-0" **2**

**3D - PORTE COCHERE**  
SCALE:

**NOT FOR CONSTRUCTION**

Project Name

avid™ hotels

Project Number

05/13/19

Description

**BUILDING ELEVATIONS - EAST & SOUTH**

Scale

As indicated

**A4.10**



**SHEET NOTES**

- 01 INTEGRATED EXTERIOR WINDOW AND PTAC LOUVER
- 02 EXTERIOR CLADDING WITH WATERPROOFING SYSTEM
- 03 METAL COPING
- 04 EXTERIOR STOREFRONT WINDOWS
- 05 EXTERIOR CLADDING SYSTEM BENEATH CANOPY AND ADJACENT WING WALLS
- 06 SINGLE SLIDING GLASS DOOR
- 07 ELEVATOR OVERRUN BEYOND
- 08 8" CAST STONE BASE
- 09 EXTERIOR ALUMINUM WINDOW, TYP.
- 10 EXTERIOR HOLLOW METAL DOORS PAINTED TO MATCH WALLS, TYP.
- 11 3/4" CONTROL JOINT
- 12 3/4" REVEAL
- 14 ENTRANCE CANOPY WITH TPO ROOF
- 15 STOREFRONT DOOR
- 17 3'-0"x3'-0" HOT WATER TANK INTAKE EXHAUST
- 18 LAUNDRY EXHAUST, COORDINATE WITH MANUFACTURER FOR LOUVER SIZES AND LOCATIONS - ALIGN EDGES OF LOUVER WITH WINDOW ABOVE IF FEASIBLE
- 20 PREFABRICATED CANOPY
- 21 SCUPPER, PAINTED TO MATCH ADJACENT WALL
- 23 EXTERIOR LIGHT FIXTURE, RE: ELECT. AND LIGHTING DWGS
- 24 POTENTIAL LOCATION FOR BUILDING SIGNAGE, PROVIDE ELECTRICAL SERVICE TO LOCATIONS WHERE SIGNAGE TO BE INSTALLED. REFER IHG SIGNAGE GUIDELINES FOR MORE INFORMATION.
- 25 BURNISHED BLOCK VENEER 16" X 24"
- 26 NICHHA PANEL SYSTEM



MSI GENERAL CORPORATION  
P.O. BOX 7  
OCONOMOWOC, WI 53066  
PHONE: 262-367-3661

WWW.MSIGENERAL.COM  
SINGLE SOURCE RESPONSIBILITY

Date	Description
2017/09/18	DETAILED PROTOTYPE DRAWINGS



ALL WORK TO BE COMPLETED AS SHOWN AND IN ACCORDANCE WITH THE LATEST EDITION OF THE MSI GENERAL MASTER SPECIFICATION.

**GENERAL NOTES**

**NOT FOR CONSTRUCTION**

Project Name  
avid™ hotels

Project Number  
05/13/19

Description  
**BUILDING ELEVATIONS - WEST & NORTH**

Scale  
1/8" = 1'-0"

**A4.20**



**NORTH ELEVATION**  
SCALE: 1/8" = 1'-0" **1**



**WEST ELEVATION**  
SCALE: 1/8" = 1'-0" **3**