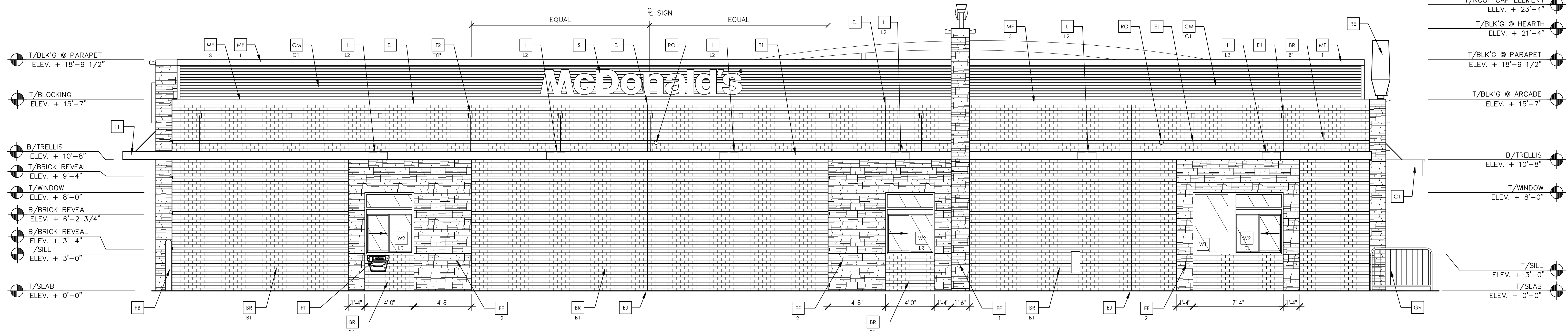




haag müller, inc.  
Architecture • Engineering • Interiors

101 East Grand Avenue, Suite 1  
Port Washington, Wisconsin 53074  
262.268.1200 www.haagmuller.com

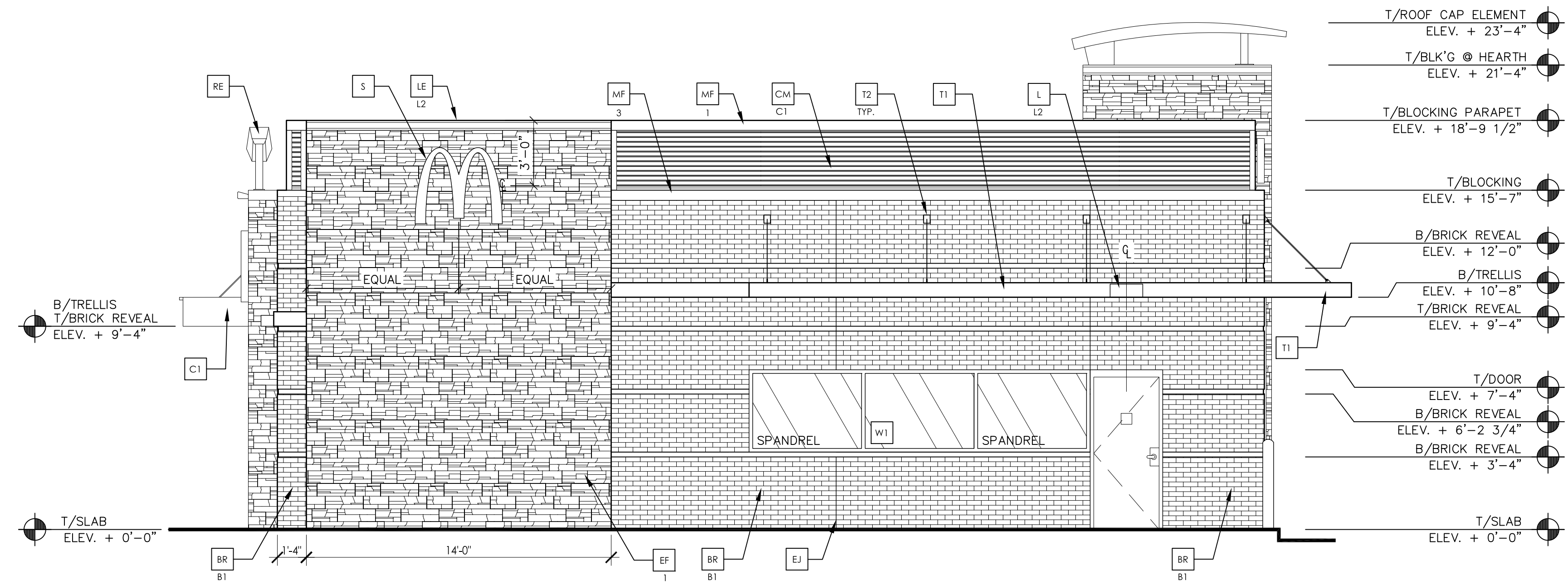
© 2017 haag müller, inc.



- T/BLK'G @ PARAPET  
ELEV. + 18'-9 1/2"
- T/BLOCKING  
ELEV. + 15'-7"
- B/TRELLIS  
ELEV. + 10'-8"
- T/BRICK REVEAL  
ELEV. + 9'-4"
- T/WINDOW  
ELEV. + 8'-0"
- B/BRICK REVEAL  
ELEV. + 6'-2 3/4"
- B/BRICK REVEAL  
ELEV. + 3'-4"
- T/SILL  
ELEV. + 3'-0"
- T/SLAB  
ELEV. + 0'-0"

- T/ROOF CAP ELEMENT  
ELEV. + 23'-4"
- T/BLK'G @ HEARTH  
ELEV. + 21'-4"
- T/BLK'G @ PARAPET  
ELEV. + 18'-9 1/2"
- T/BLK'G @ ARCADE  
ELEV. + 15'-7"
- B/TRELLIS  
ELEV. + 10'-8"
- T/WINDOW  
ELEV. + 8'-0"
- T/SILL  
ELEV. + 3'-0"
- T/SLAB  
ELEV. + 0'-0"

1 SOUTH ELEVATION (E. MORELAND BLVD.)  
SCALE: 1/4" = 1'-0"



- B/TRELLIS  
T/BRICK REVEAL  
ELEV. + 9'-4"
- T/SLAB  
ELEV. + 0'-0"

- T/ROOF CAP ELEMENT  
ELEV. + 23'-4"
- T/BLK'G @ HEARTH  
ELEV. + 21'-4"
- T/BLOCKING PARAPET  
ELEV. + 18'-9 1/2"
- T/BLOCKING  
ELEV. + 15'-7"
- B/BRICK REVEAL  
ELEV. + 12'-0"
- B/TRELLIS  
ELEV. + 10'-8"
- T/BRICK REVEAL  
ELEV. + 9'-4"
- T/DOOR  
ELEV. + 7'-4"
- B/BRICK REVEAL  
ELEV. + 6'-2 3/4"
- B/BRICK REVEAL  
ELEV. + 3'-4"
- T/SLAB  
ELEV. + 0'-0"

2 SOUTH ELEVATION (E. MORELAND BLVD.)  
SCALE: 1/4" = 1'-0"

KEY NOTES:

- BR FACEBRICK  
B1 - COLOR:  
B1 = "RUBIGO RED VELOUR" BY BELDEN OR EQUAL
- C1 ALUMINUM CANOPY SYSTEM (COLOR: GOLD)
- C2 ALUMINUM CANOPY TIE-BACK SYSTEM
- CJ CONTROL JOINT  
X - TYPE: 1 = EFS
- CM CORRUGATED METAL PANEL - SEE 18/AS.0  
C1 - COLOR:  
C1 = "CITYSCAPE" BY METAL-ERA
- D HOLLOW METAL DOOR - PAINT TO MATCH COLOR OF SURROUNDING MATERIAL
- EF EXTERIOR FINISH (STONE) = BORAL STONE PRODUCTS  
1. MCD PFSW BLEND  
2. MCD APFW BLEND
- EJ EXPANSION JOINT, SEE DETAIL 7/A4.1
- FB PIPE BOLLARD - PAINTED YELLOW
- CO2 - CO2 = BULK CO2 FILL BOX (EOPM SCHEDULE ITEM 49.00)  
BO = BULK OIL FILL BOX (EOPM SCHEDULE ITEM 700.18) -  
MCD PROJECT MANAGER CONFORM USE WITH
- GR GUARD RAIL - SEE SITE PLAN FOR EXACT LOCATION AND LENGTH
- L LIGHT FIXTURE (WALL SCONCE) - SEE ELECTRICAL  
L1 - L1 = UP AND DOWN FIXTURE  
L2 = DOWN ONLY FIXTURE
- LE ACCENT LIGHTING - SEE ELECTRICAL  
L1 - LED LIGHT  
L1 = UP AND DOWN FIXTURE  
L2 = DOWN ONLY FIXTURE  
L3 = INTEGRAL CANOPY FIXTURE  
L4 = UP ONLY FIXTURE  
METAL LETTERING - BY OTHERS
- ML METAL FASCIA - COLOR TO MATCH CORRUGATED METAL PANEL -  
SEE 1/AS.0  
1 - TYPE:  
1 = PRE-FAB ANCHOR-TITE FASCIA  
2 = PRE-FAB CUSTOM ARCADE FASCIA  
3 = PRE-FAB MASONRY CAP FASCIA
- PB PIPE BOLLARD - PAINTED YELLOW
- PT (RMHC) COIN COLLECTOR UNIT #HWPT 072000 STD CALL 1-888-743-7435 TO ORDER
- RE ROOF CAP ELEMENT BY OTHERS
- RO ROOF DRAIN OVERFLOW PIPE PAINT TO MATCH SURROUNDING MATERIAL
- T1 ALUMINUM TRELLIS SYSTEM
- T2 TRELLIS TIE-BACK SYSTEM
- T3 ALUMINUM TRELLIS 2" x 3" WALL FASCIA SYSTEM - REFER TO SM. DETAIL 3 ON SHEET AS.1
- S MCDONALD'S SIGNAGE BY OTHERS - UNDER SEPARATE PERMIT.
- W1 EXTERIOR WINDOW ASSEMBLY - TEMPERED GLASS - SEE ASSEMBLY NOTES
- W2 DRIVE-THRU WINDOW BY READY ACCESS 600 SERIES, 36" SERVICE HEIGHT WITH TRANSOM - MANUAL OPEN; ELECTRONIC RELEASE  
SLIDE DIRECTION: RL = RIGHT TO LEFT  
LR = LEFT TO RIGHT

EXTERIOR ELEVATIONS

MCDONALD'S REBUILD PROJECT  
MCDONALD'S RESTAURANT (SITE ID # xxxxxx)  
2340 EAST MORELAND BOULEVARD  
CITY OF WAUKESHA, WISCONSIN

NO.	DATE	DESCRIPTION

DATE: 01-23-16  
PROJ. NO: 1701102  
DRAWN BY: AY  
SHEET

A-2.2