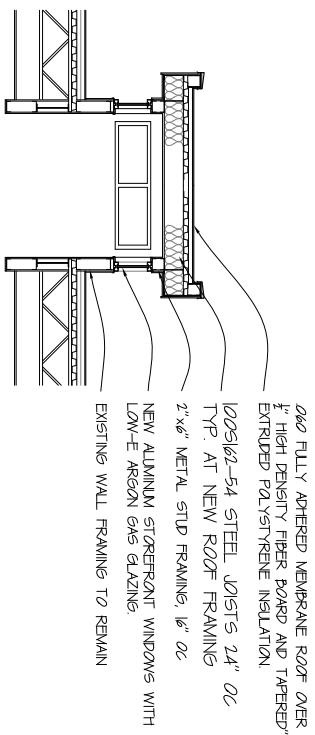
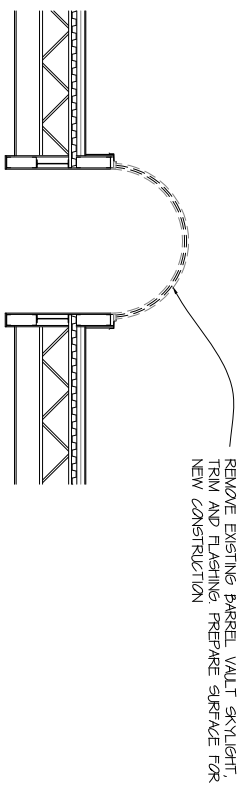


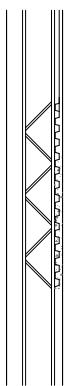
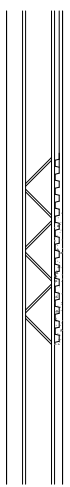
2 EXISTING SKYLIGHT  
 SCALE : 1/4" = 1'-0" FOR 24"x36" SHEETS  
 SCALE : 1/8" = 1'-0" FOR 11"x17" SHEETS

1 EXISTING BUILDING SECTION AT ADDITION  
 SCALE : 1/4" = 1'-0" FOR 24"x36" SHEETS  
 SCALE : 1/8" = 1'-0" FOR 11"x17" SHEETS



REMOVE EXISTING BARREL VAULT SKYLIGHT TRUSS AND FINISHING PRESERVE SURFACE FOR NEW CONSTRUCTION

100S162-54 STEEL JOISTS 24" OC TYP. AT NEW ROOF FRAMING  
 2" x 6" METAL STUD FRAMING 16" OC  
 NEW ALUMINUM STOREFRONT WINDOWS WITH LOW-E ARGON GAS GLAZING  
 EXISTING WALL FRAMING TO REMAIN



3 EXISTING SKYLIGHT  
 SCALE : 1/4" = 1'-0" FOR 24"x36" SHEETS  
 SCALE : 1/8" = 1'-0" FOR 11"x17" SHEETS

4 EXISTING SKYLIGHT  
 SCALE : 1/4" = 1'-0" FOR 24"x36" SHEETS  
 SCALE : 1/8" = 1'-0" FOR 11"x17" SHEETS

ADDITION & ALTERATIONS  
 For  
 TRUE LIFE CHURCH  
 1615 SILVERNAIL RD  
 WAUKESHA, WI 53188

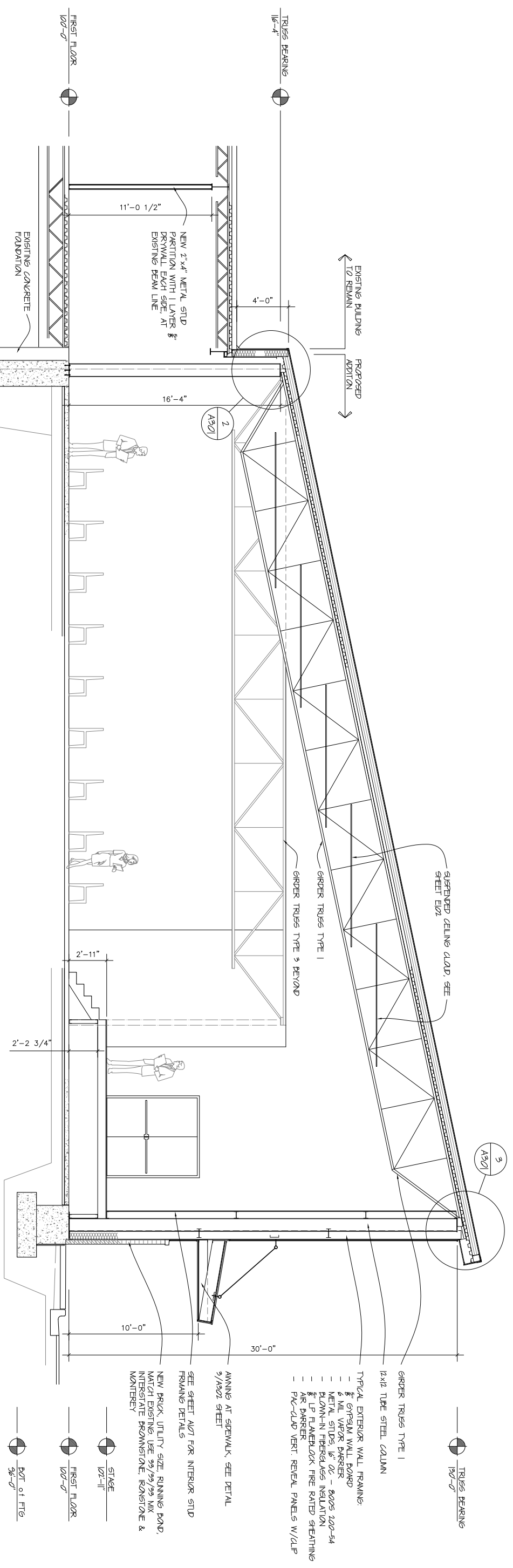
BUILDING SECTIONS  
 &  
 CONSTRUCTION DETAILS

arc central llc.  
 James Lucas  
 architecture construction management interior design  
 1930 1st N wisconsin rapids, WI 54494  
 arccentralinc@outlook.com 715-572-2698

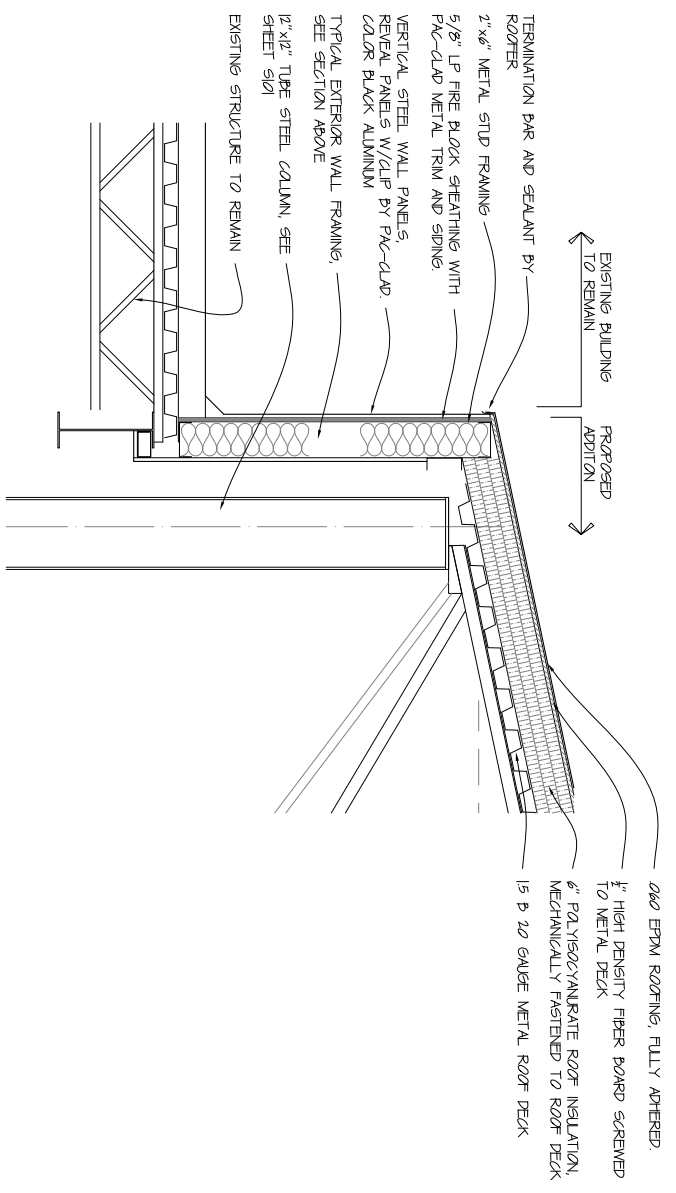
REVISIONS	DATE	DESCRIPTION
2/21	2/21	SCHEM DES.
3/21	3/21	DES DEV.
5/11	5/11	CONST DOCS
6/21	6/21	APPROVAL

DATE: Jan 6, 2021  
 PROJECT NO: 21 007

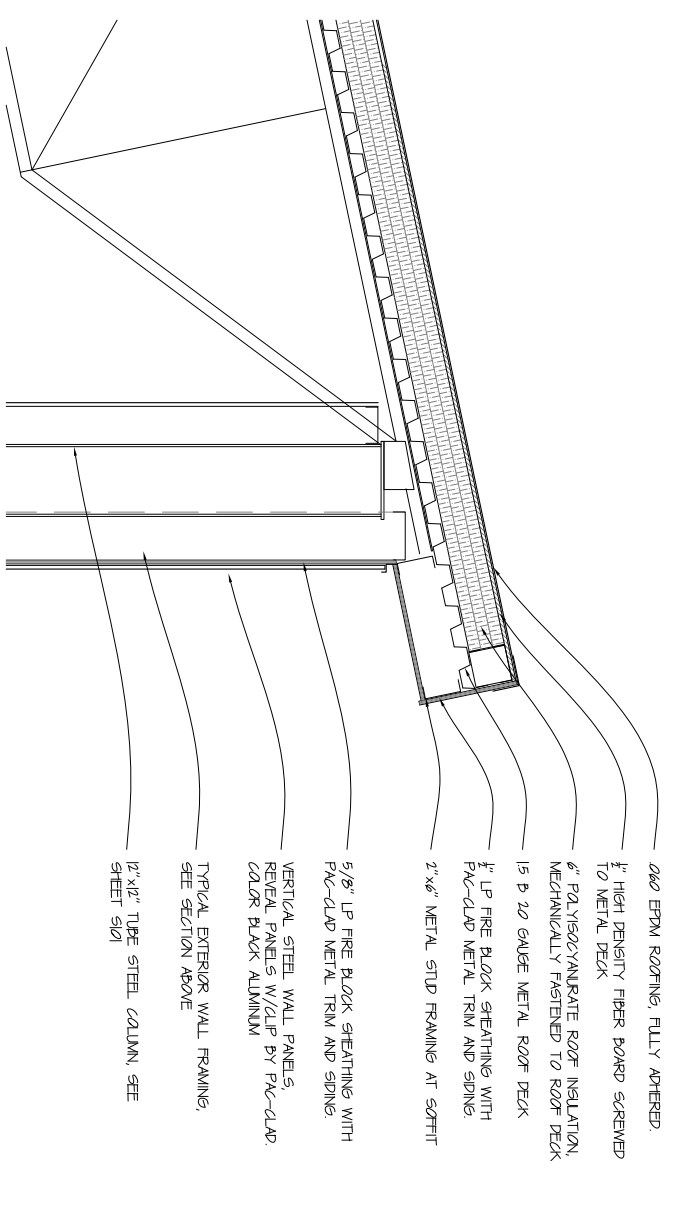
A300



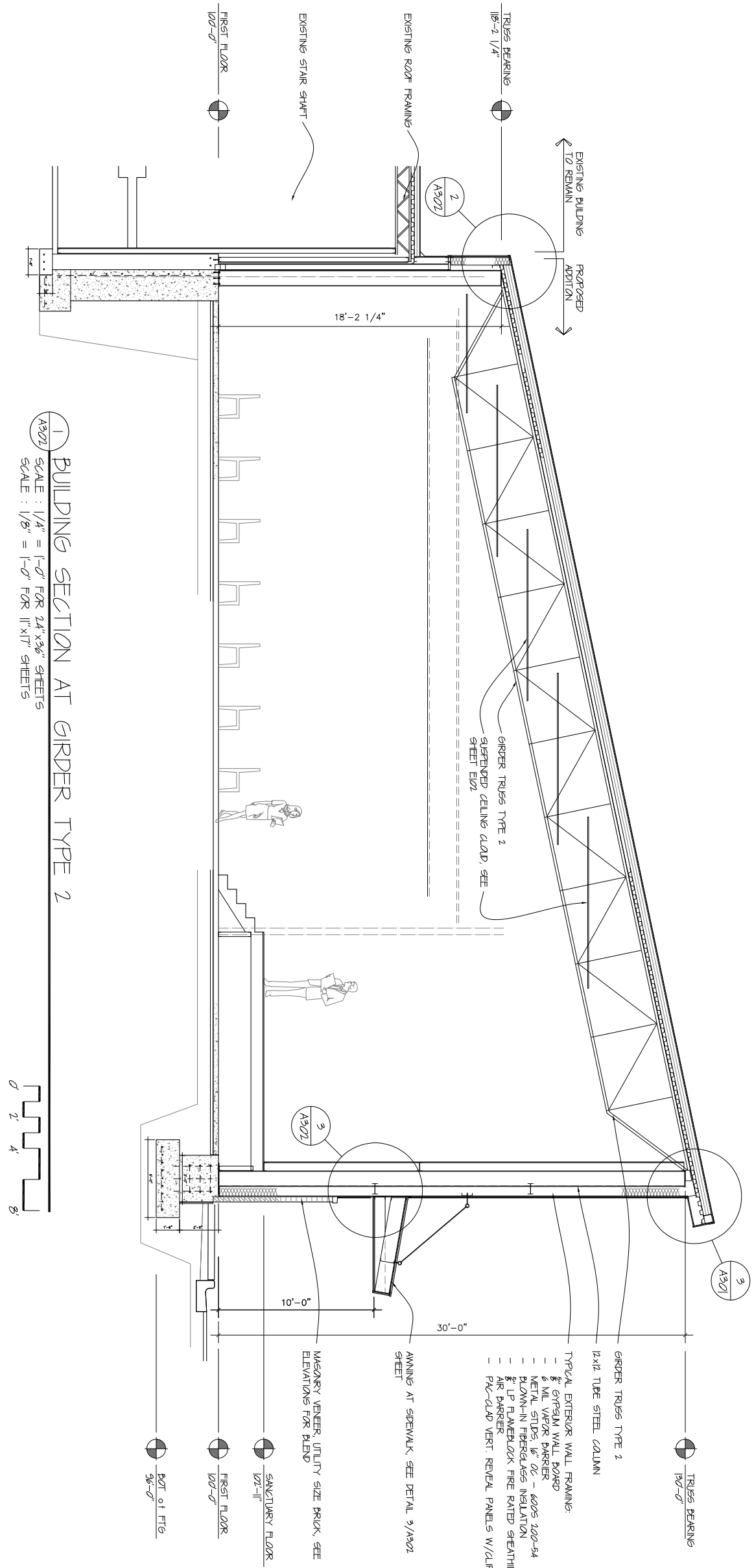
**1 BUILDING SECTION AT GIRDER TYPE 1**  
 SCALE : 1/4" = 1'-0" FOR 24" x 36" SHEETS  
 SCALE : 1/8" = 1'-0" FOR 11" x 17" SHEETS



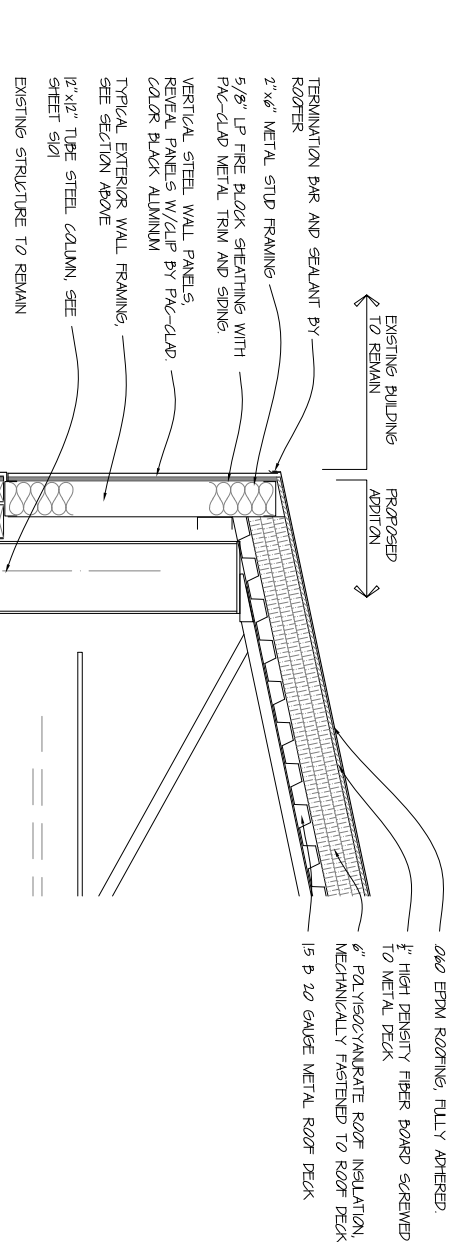
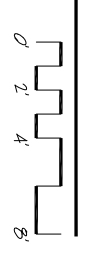
**2 BUILDING DETAIL**  
 SCALE : 3/4" = 1'-0" FOR 24" x 36" SHEETS  
 SCALE : 3/8" = 1'-0" FOR 11" x 17" SHEETS



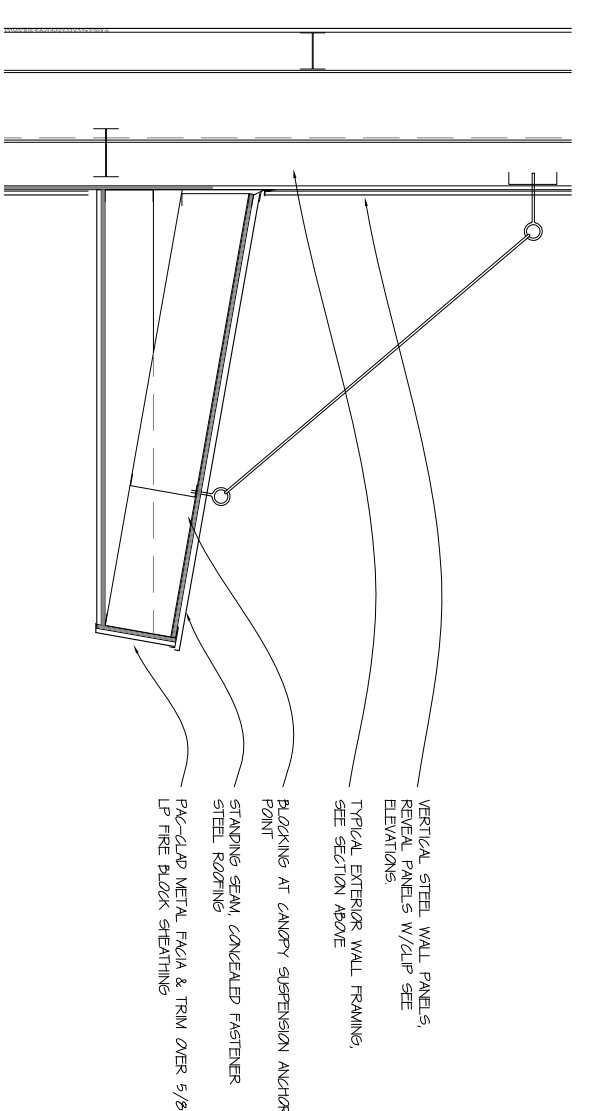
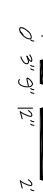
**3 BUILDING DETAIL**  
 SCALE : 3/4" = 1'-0" FOR 24" x 36" SHEETS  
 SCALE : 3/8" = 1'-0" FOR 11" x 17" SHEETS



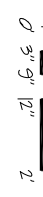
**1 BUILDING SECTION AT GIRDER TYPE 2**  
 SCALE : 1/4" = 1'-0" FOR 24"x36" SHEETS  
 SCALE : 1/8" = 1'-0" FOR 11"x17" SHEETS

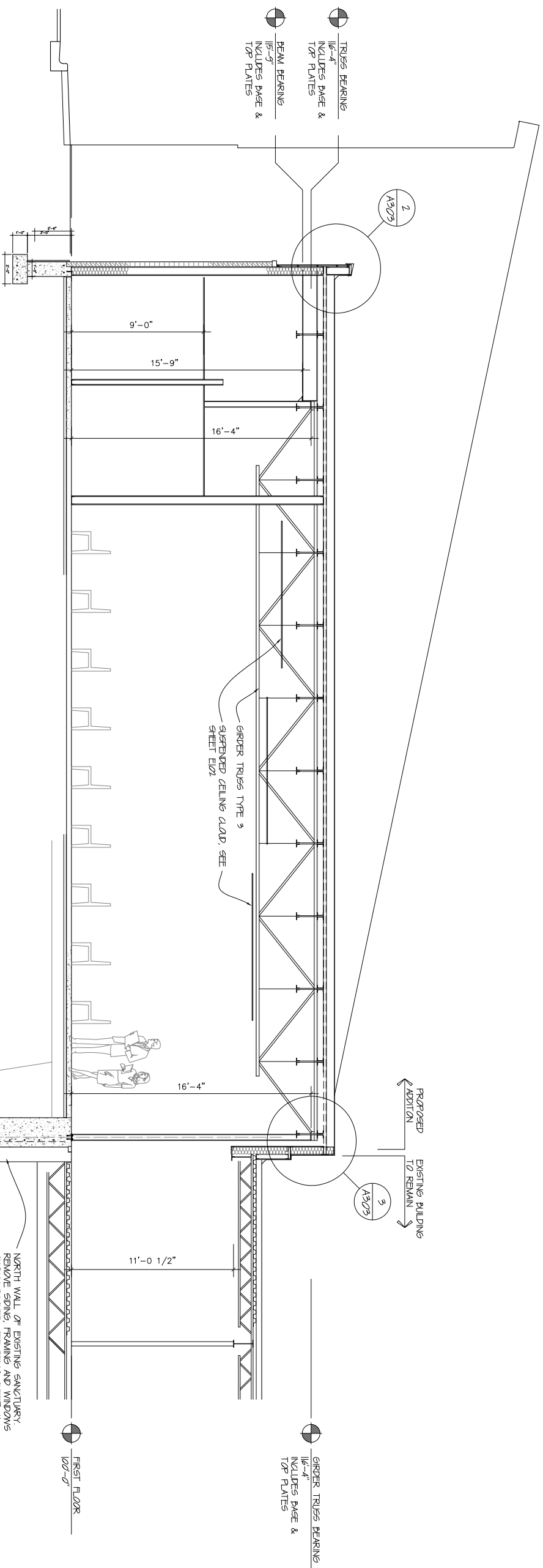


**2 BUILDING DETAIL**  
 SCALE : 3/4" = 1'-0" FOR 24"x36" SHEETS  
 SCALE : 3/8" = 1'-0" FOR 11"x17" SHEETS

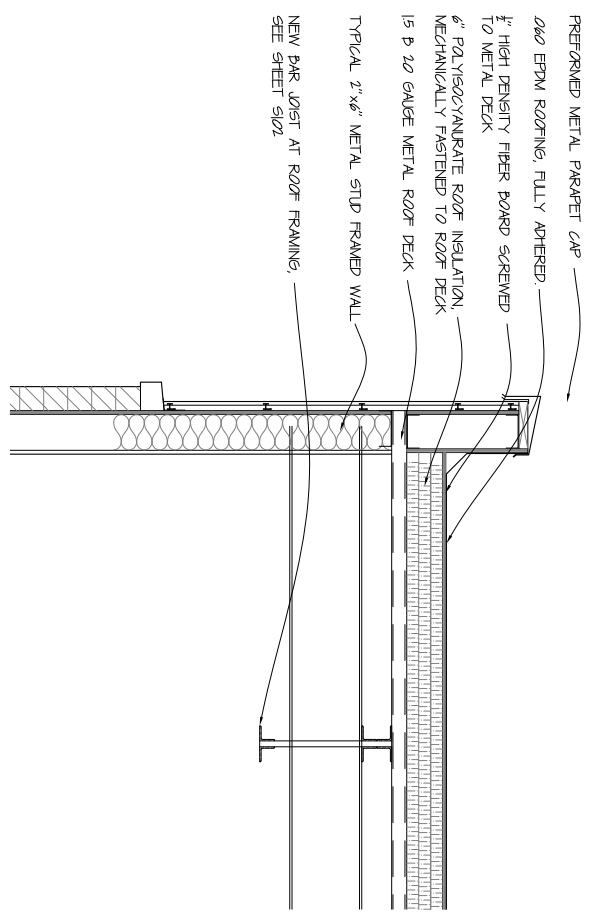


**3 BUILDING DETAIL**  
 SCALE : 3/4" = 1'-0" FOR 24"x36" SHEETS  
 SCALE : 3/8" = 1'-0" FOR 11"x17" SHEETS

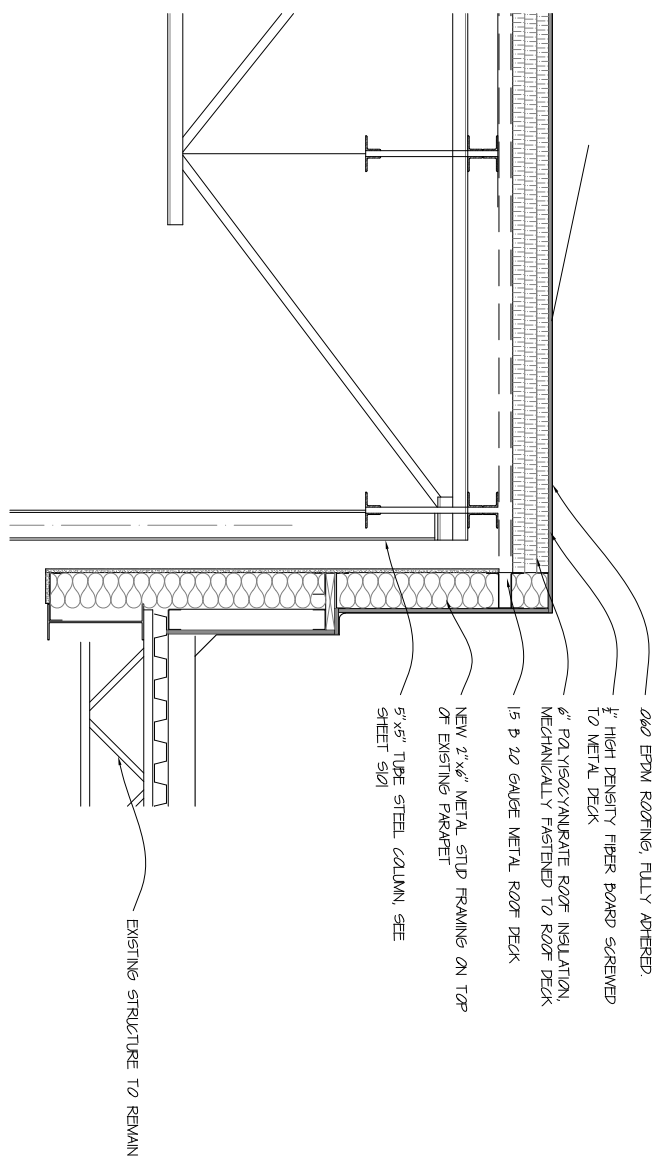




1 BUILDING SECTION AT GIRDER TYPE 3  
 SCALE : 1/4" = 1'-0" FOR 24"x36" SHEETS  
 SCALE : 1/8" = 1'-0" FOR 11"x17" SHEETS



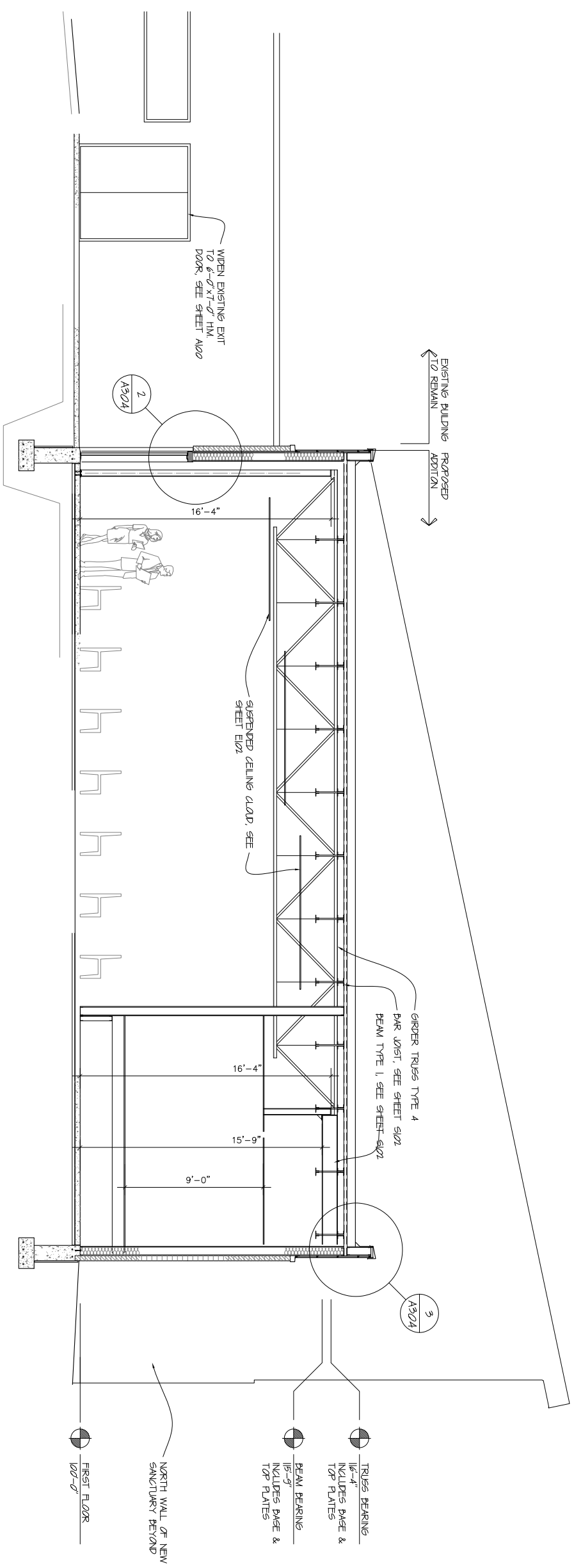
2 BUILDING DETAIL  
 SCALE : 3/4" = 1'-0" FOR 24"x36" SHEETS  
 SCALE : 3/8" = 1'-0" FOR 11"x17" SHEETS



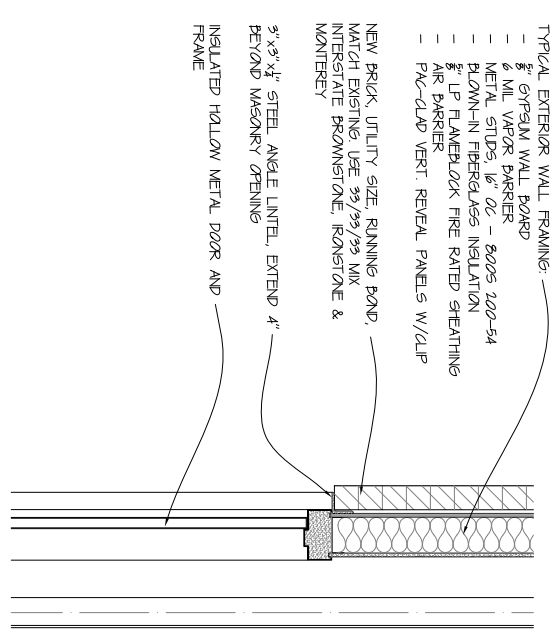
3 BUILDING DETAIL  
 SCALE : 3/4" = 1'-0" FOR 24"x36" SHEETS  
 SCALE : 3/8" = 1'-0" FOR 11"x17" SHEETS

REVISIONS	DATE	DESCRIPTION
2/12/21	2/12/21	SCHEM DES.
3/22/21	3/22/21	DES DEV.
5/11/21	5/11/21	CONST DOC'S
6/9/21	6/9/21	APPROVAL

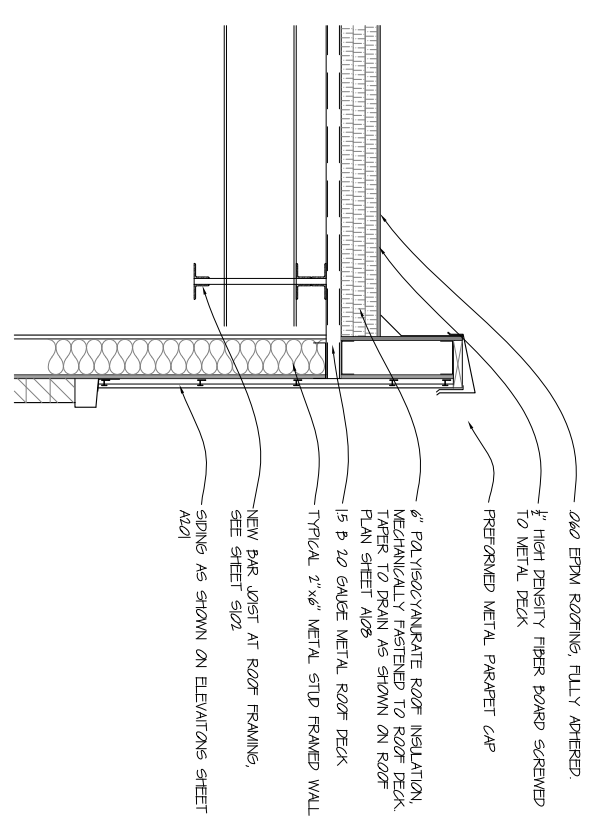
Jan 6, 2021  
 PROJECT NO. 21 001



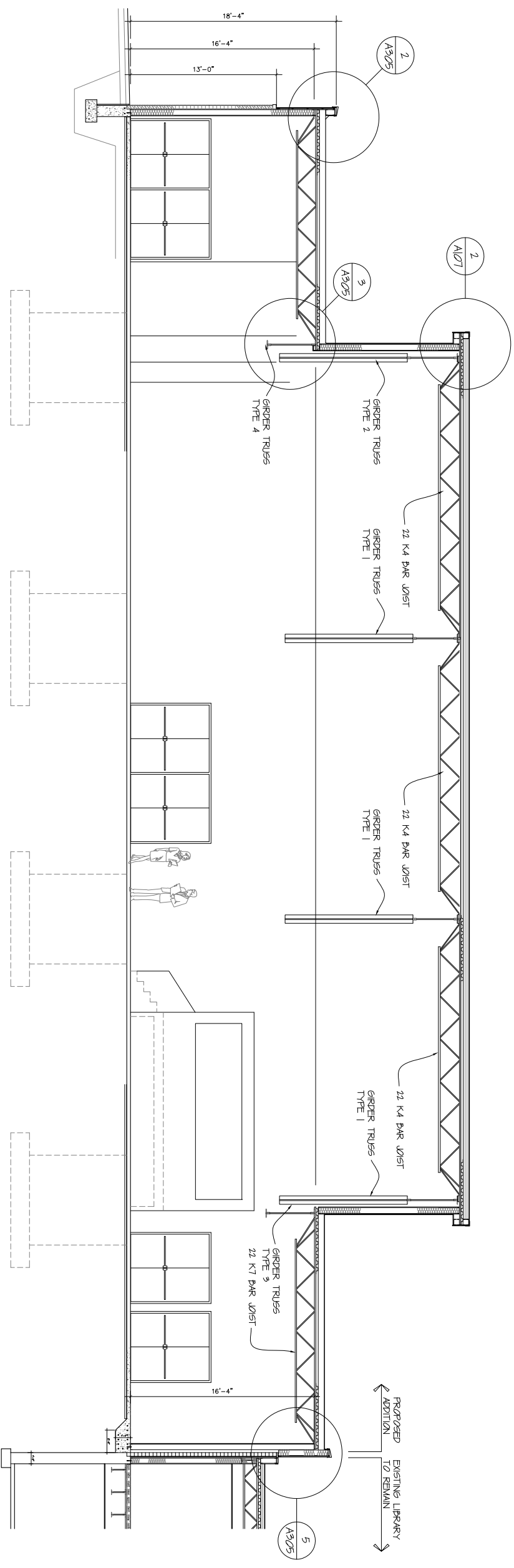
1 BUILDING SECTION AT GIRDER TYPE 4  
 SCALE : 1/8" = 1'-0" FOR 24"x36" SHEETS  
 SCALE : 1/8" = 1'-0" FOR 11"x17" SHEETS



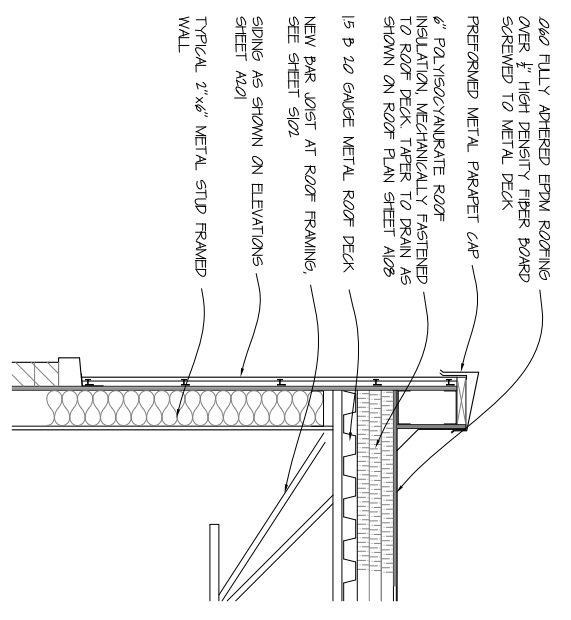
2 BUILDING DETAIL  
 SCALE : 3/4" = 1'-0" FOR 24"x36" SHEETS  
 SCALE : 3/8" = 1'-0" FOR 11"x17" SHEETS



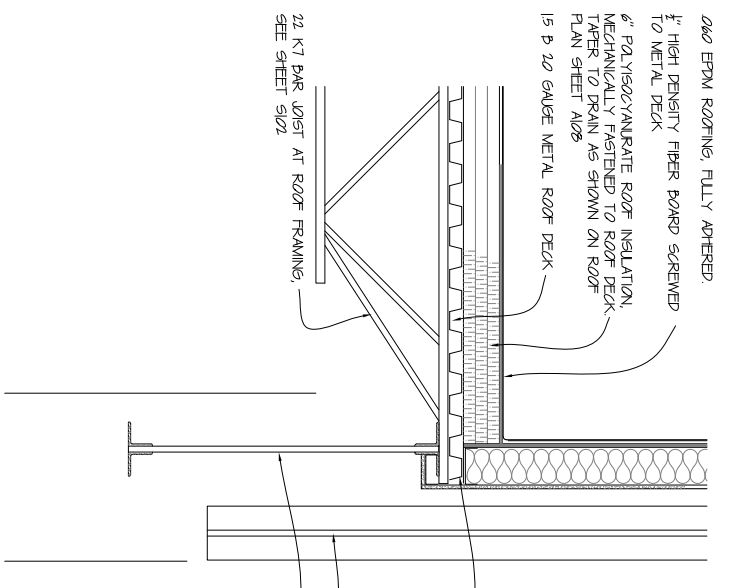
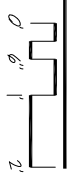
3 BUILDING DETAIL  
 SCALE : 3/4" = 1'-0" FOR 24"x36" SHEETS  
 SCALE : 3/8" = 1'-0" FOR 11"x17" SHEETS



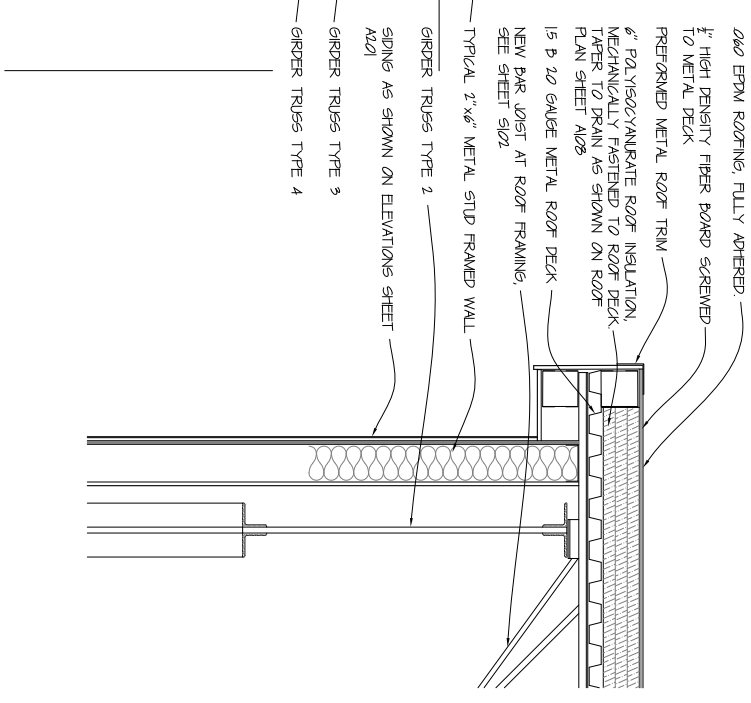
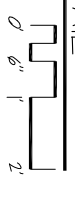
1 BUILDING SECTION AT ADDITION  
 A305 SCALE : 1/8" = 1'-0" FOR 24"x36" SHEETS  
 SCALE : 1/8" = 1'-0" FOR 11"x17" SHEETS



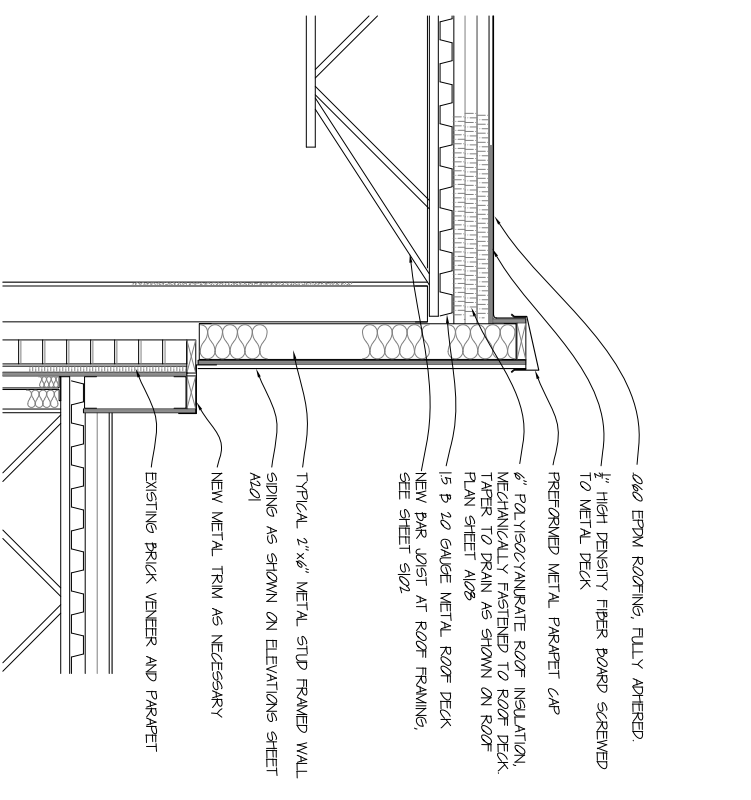
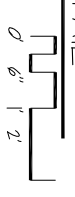
2 PARAPET DETAIL  
 A305 SCALE : 3/4" = 1'-0"



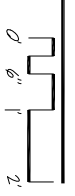
3 CONSTRUCTION DETAIL  
 A305 SCALE : 3/4" = 1'-0"

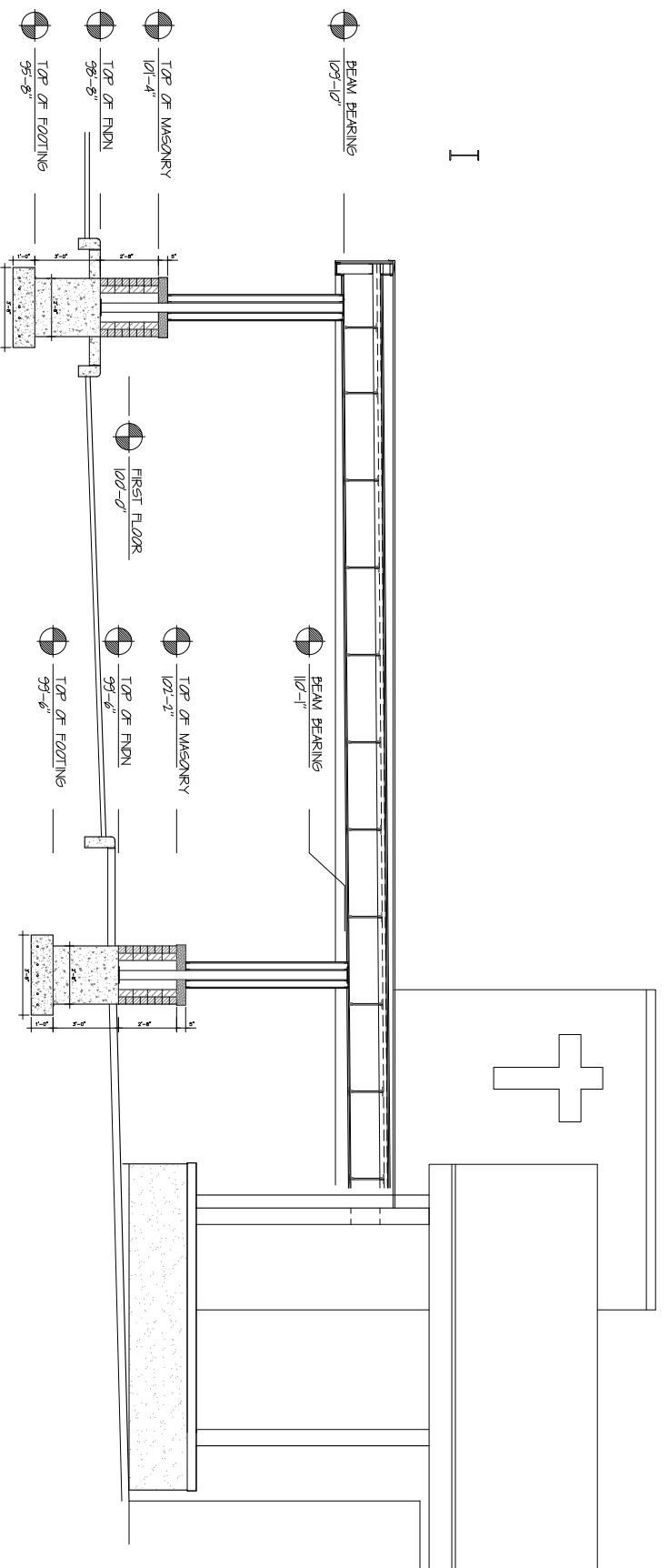
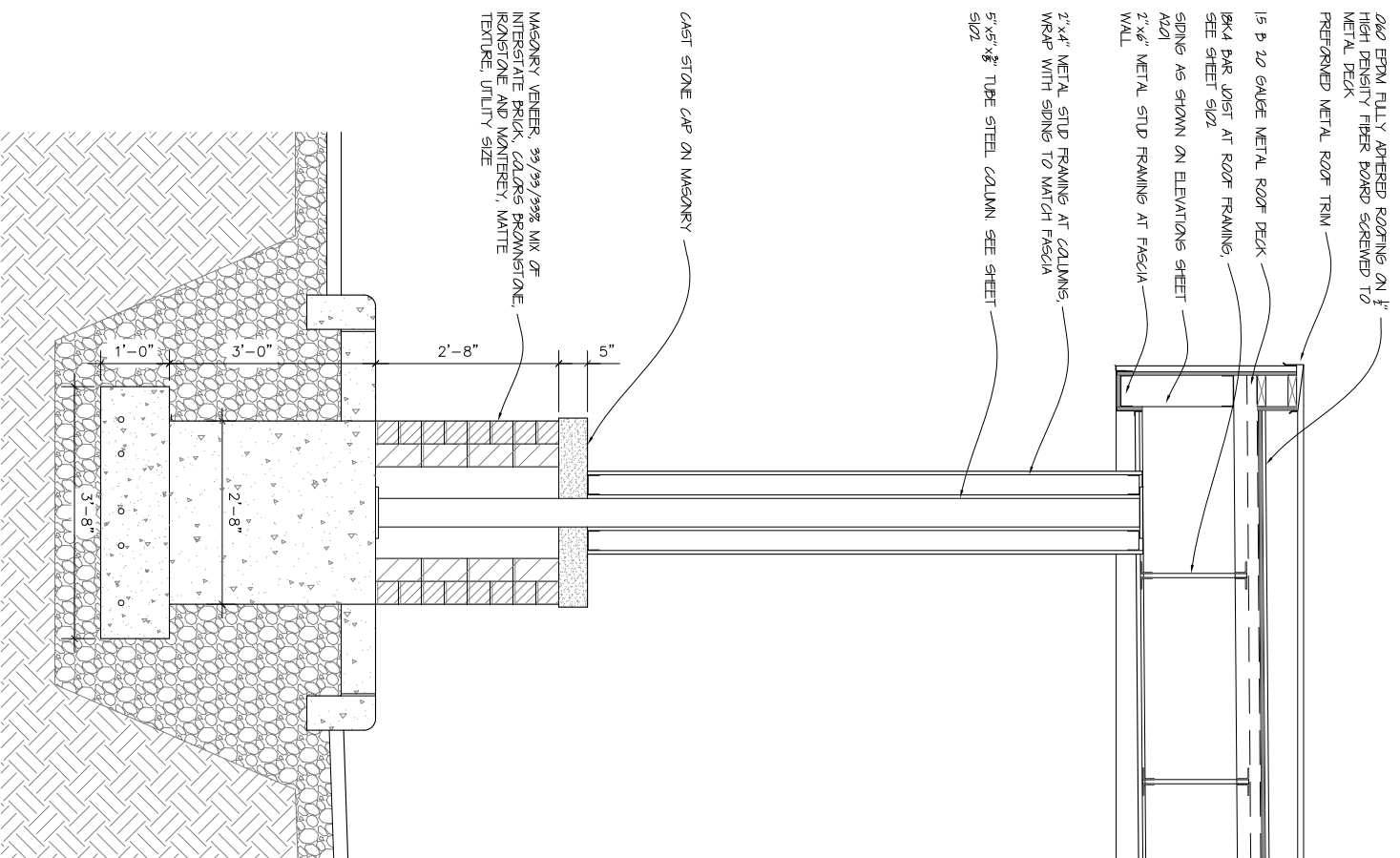


4 CONSTRUCTION DETAIL  
 A305 SCALE : 3/4" = 1'-0"

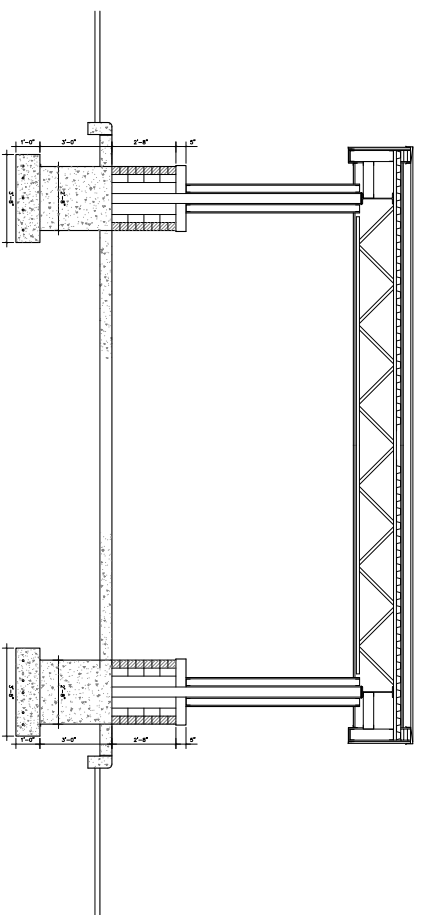


5 PARAPET DETAIL  
 A305 SCALE : 3/4" = 1'-0"



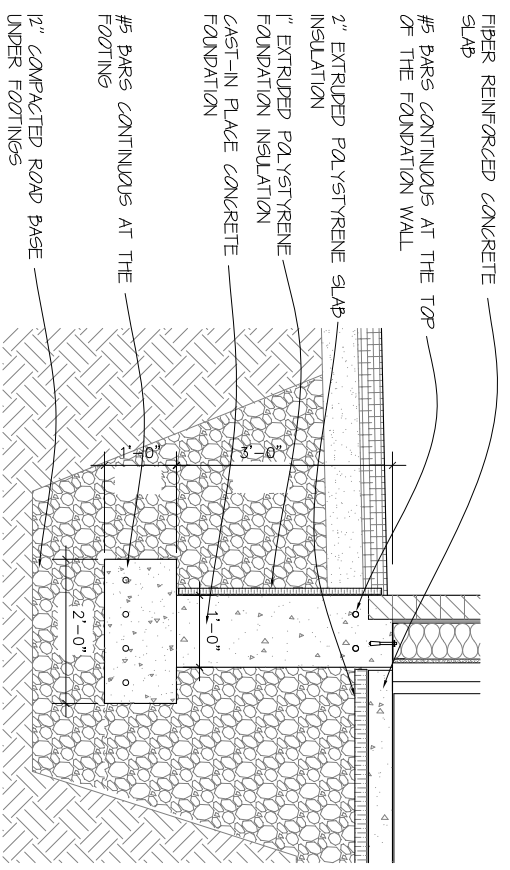


1 COVERED DRIVE CANOPY SECTION  
 SCALE : 1/4" = 1'-0" FOR 24"x36" SHEETS  
 SCALE : 1/8" = 1'-0" FOR 11"x17" SHEETS

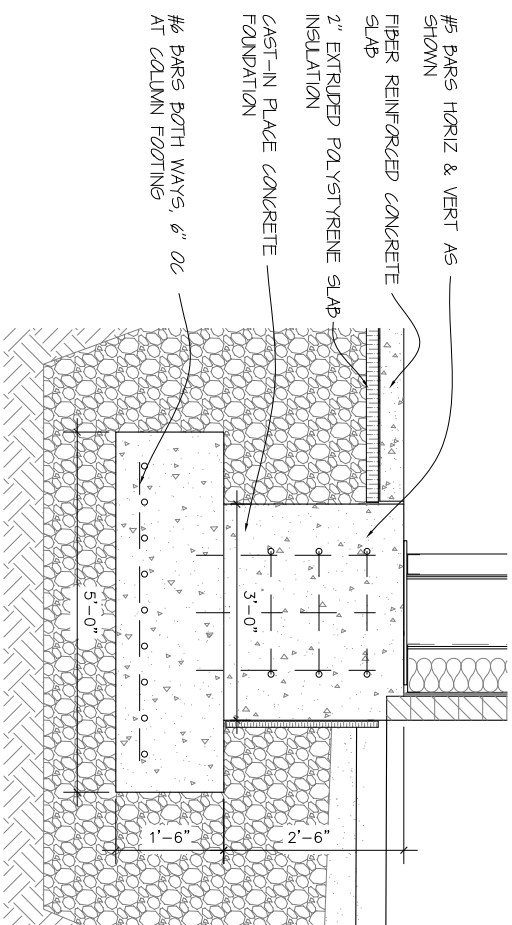


2 COVER DRIVE CANOPY SECTION  
 SCALE : 1/4" = 1'-0" FOR 24"x36" SHEETS  
 SCALE : 1/8" = 1'-0" FOR 11"x17" SHEETS

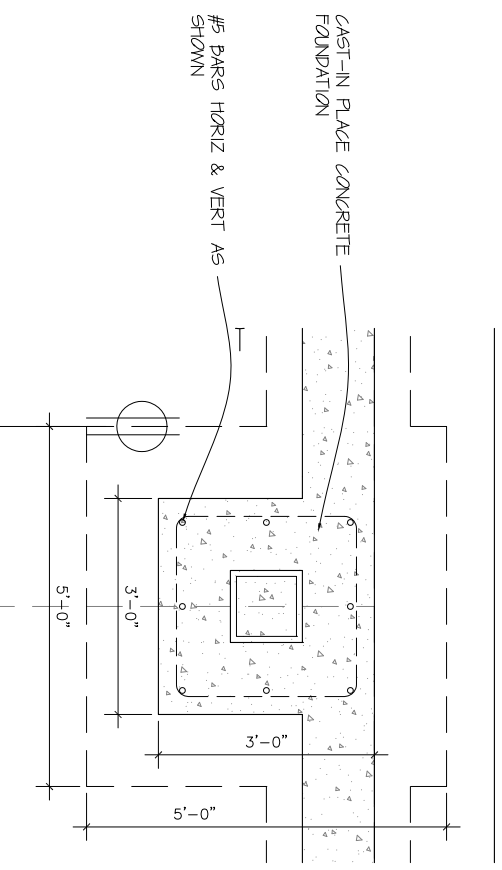
MASONRY VENEER, 3/32/3/32 MIX OF INTERGATE BRICK, COLORS BRUNNISTONE, RAINSTONE AND MANTREY, MATTE TEXTURE, UTILITY SIZE



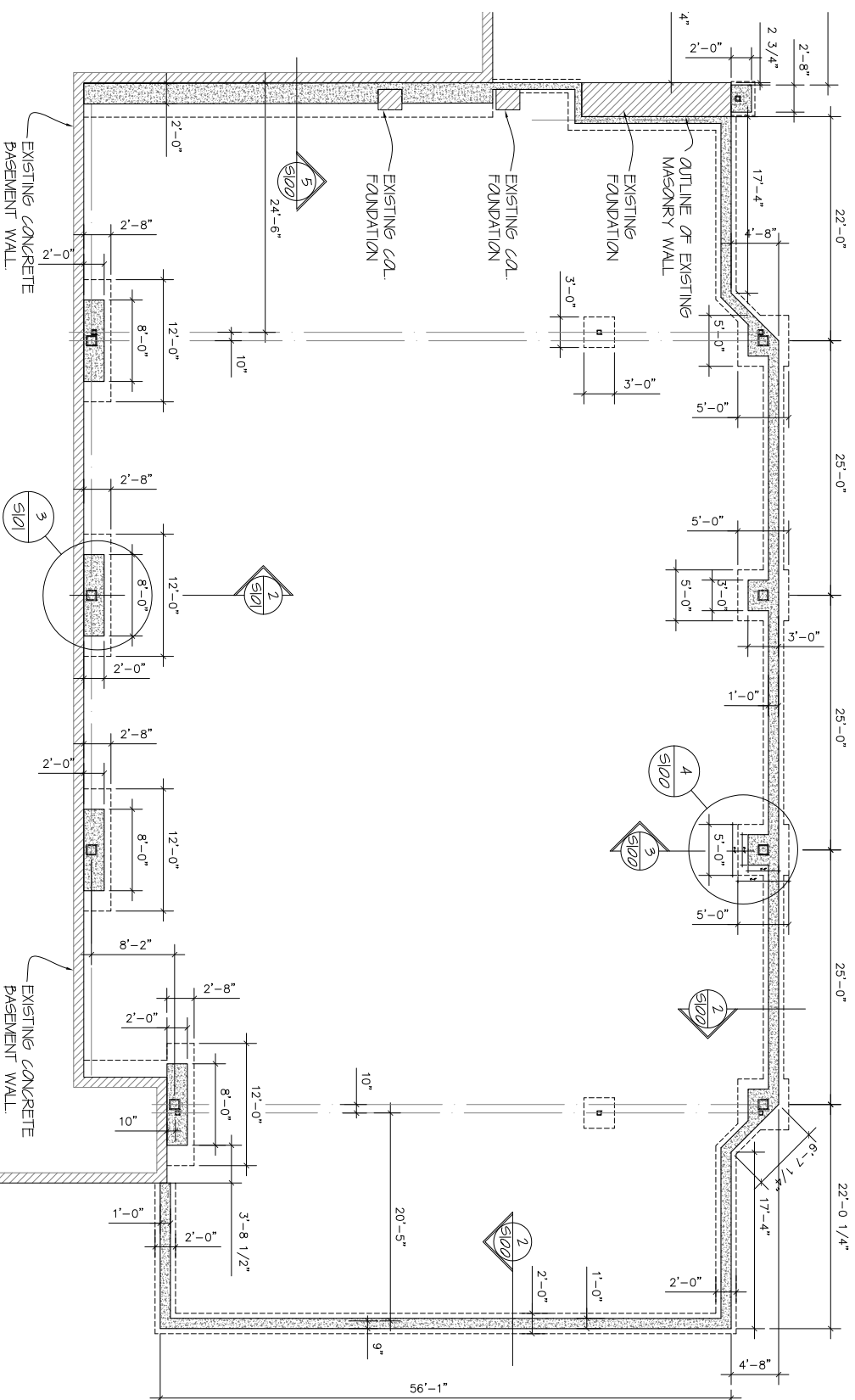
2 FOUNDATION DETAIL  
SCALE: 3/4" = 1'-0"  
1/2" COMPACTED ROAD BASE UNDER FOOTINGS



3 FOUNDATION DETAIL  
SCALE: 3/4" = 1'-0"  
#6 BARS BOTH WAYS, 6" OC AT COLUMN FOOTINGS

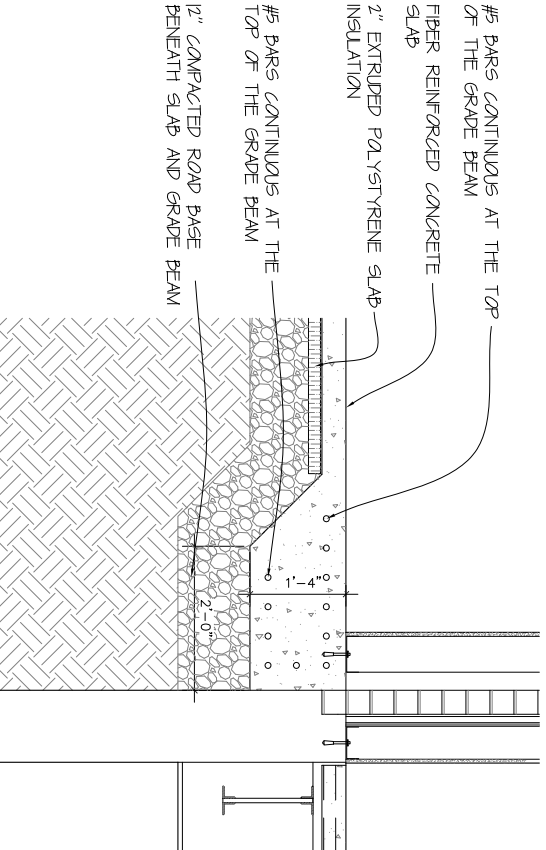
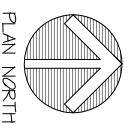


4 FOUNDATION DETAIL  
SCALE: 3/4" = 1'-0"

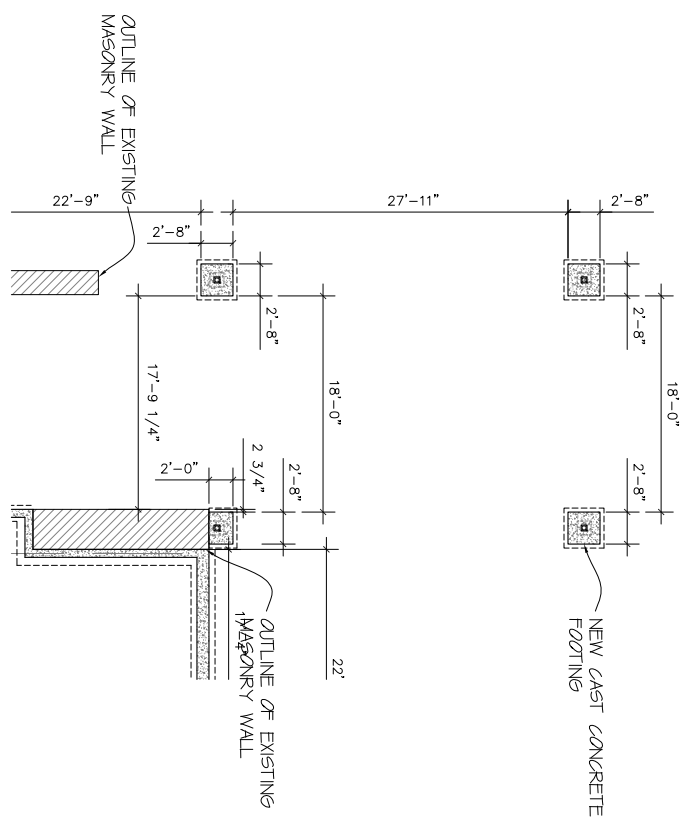


1 FOUNDATION PLAN  
SCALE: 1/8" = 1'-0"

ALL CAST-IN-PLACE CONCRETE SLAB FOOTINGS AND GRADE BEAMS SHALL BE MIXED TO ACHIEVE A COMPRESSIVE STRENGTH 4,000 PSI MINIMUM, AND SHALL BE AIR ENTRAINED. CONCRETE MIX SHALL CONTAIN FIBRILLATED FIBERWESH REINFORCING, 15 LBS PER CUBIC YARD.



5 FOUNDATION DETAIL  
SCALE: 3/4" = 1'-0"

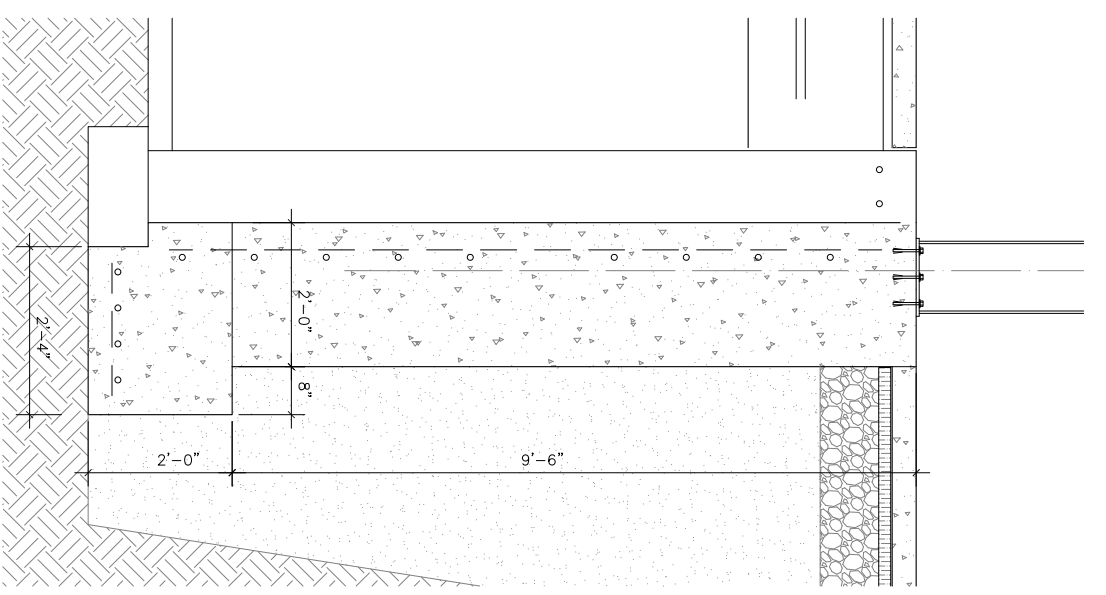


6 CANOPY FOUNDATION PLAN  
SCALE: 1/8" = 1'-0"

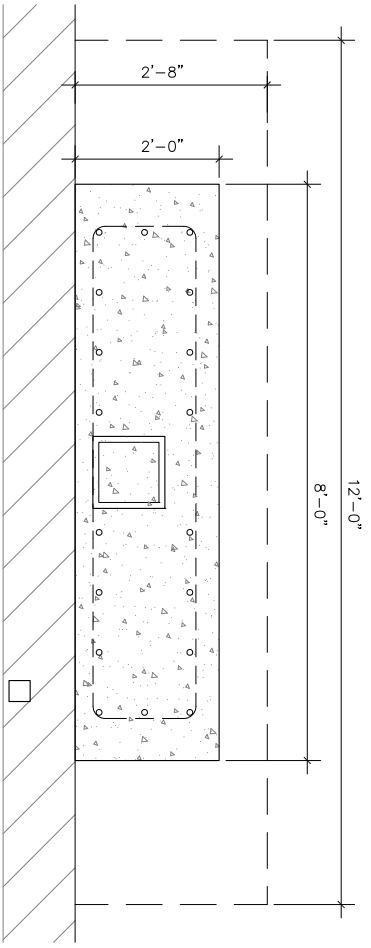
REVISIONS	DATE	APPROVAL
SCHM DES 2/21		
DES DEV 3/21		
CONST DOCS 5/11		
APPROVAL 6/21		

DATE: Jan 6, 2021  
PROJECT NO: 21 001

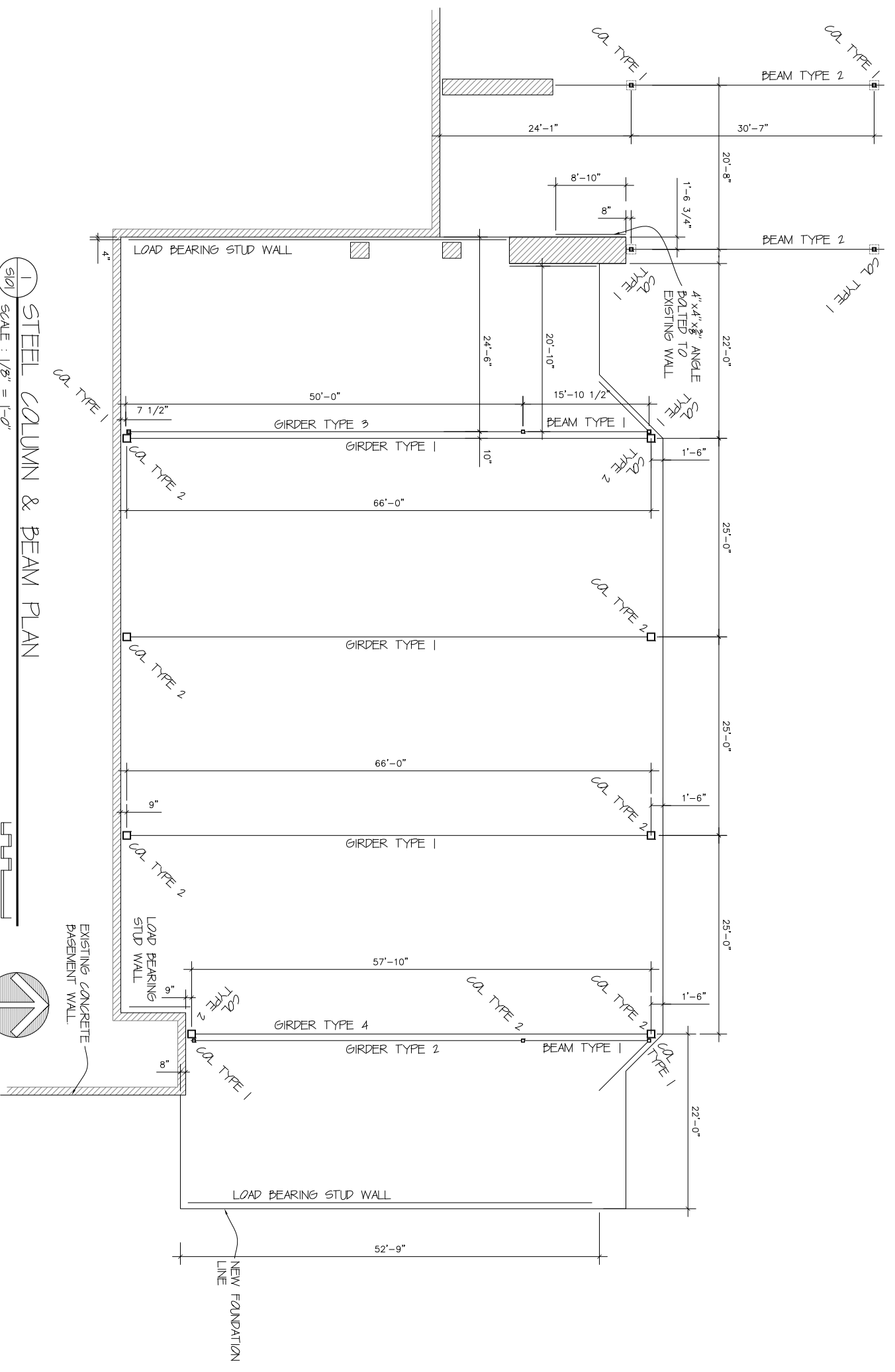




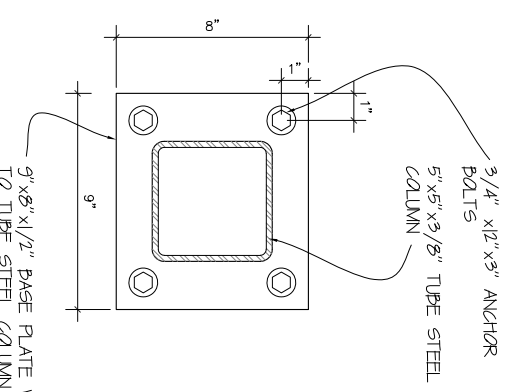
1 FOUNDATION DETAIL  
 S/D SCALE: 3/4" = 1'-0"



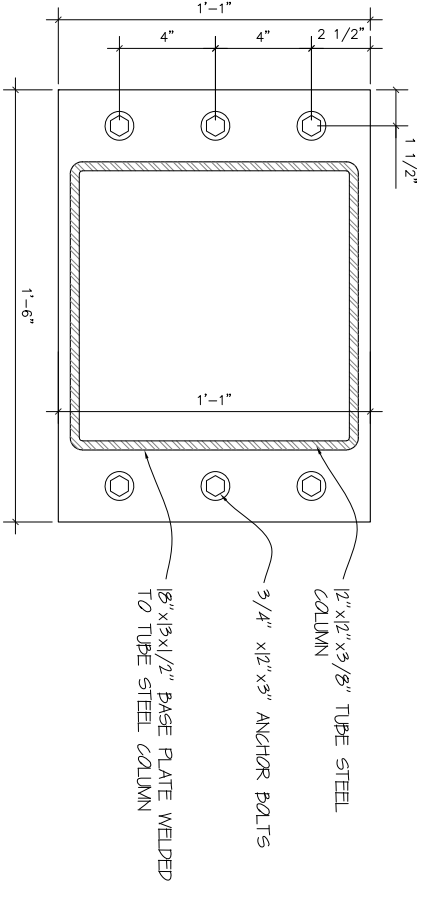
3 FOUNDATION DETAIL  
 S/D SCALE: 3/4" = 1'-0"



1 STEEL COLUMN & BEAM PLAN  
 S/D SCALE: 1/8" = 1'-0"



4 COL 1 BASEPLATE  
 S/D SCALE: 3" = 1'-0"



5 COL 2 BASEPLATE  
 S/D SCALE: 3" = 1'-0"

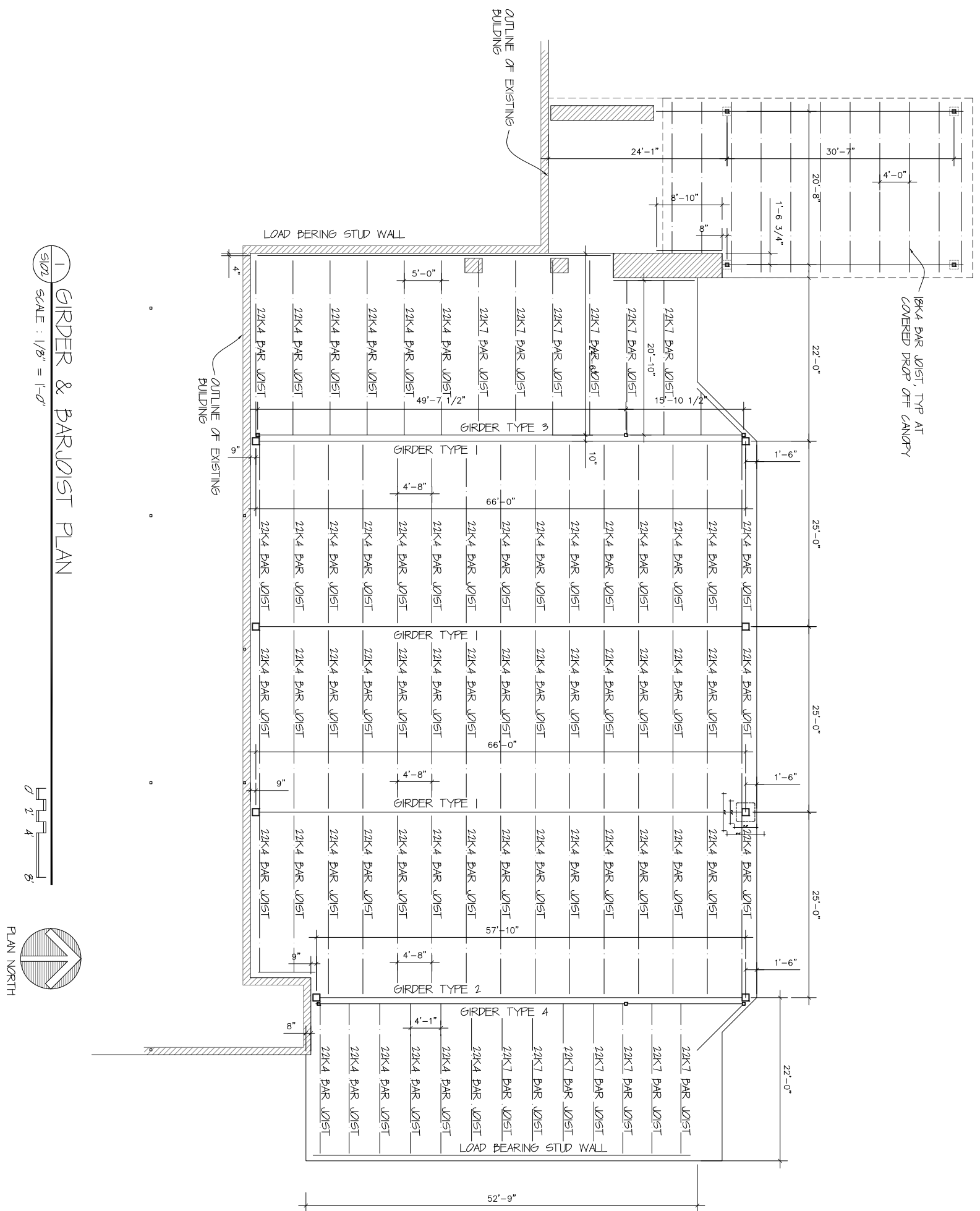
BEARING WALL	USE 6005 200-54 STUDS
GIRDER TYPE 1	6' SPAN, 546 IAN 8K
GIRDER TYPE 2	56'-10" SPAN, 506 IAN 8K
GIRDER TYPE 3	50' SPAN, 506 IAN 8K
GIRDER TYPE 4	42' SPAN, 506 IAN 8K
BEAM TYPE 1	W12x19 STEEL BEAM
BEAM TYPE 2	W16x31 STEEL BEAM
BEAM TYPE 3	W12x15 STEEL BEAM
BEAM TYPE 4	W12x15 STEEL BEAM
BEAM TYPE 5	W12x15 STEEL BEAM
BEAM TYPE 6	W12x15 STEEL BEAM
BEAM TYPE 7	W12x15 STEEL BEAM
BEAM TYPE 8	W12x15 STEEL BEAM
BEAM TYPE 9	W12x15 STEEL BEAM
BEAM TYPE 10	W12x15 STEEL BEAM
BEAM TYPE 11	W12x15 STEEL BEAM
BEAM TYPE 12	W12x15 STEEL BEAM
BEAM TYPE 13	W12x15 STEEL BEAM
BEAM TYPE 14	W12x15 STEEL BEAM
BEAM TYPE 15	W12x15 STEEL BEAM
BEAM TYPE 16	W12x15 STEEL BEAM
BEAM TYPE 17	W12x15 STEEL BEAM
BEAM TYPE 18	W12x15 STEEL BEAM
BEAM TYPE 19	W12x15 STEEL BEAM
BEAM TYPE 20	W12x15 STEEL BEAM
BEAM TYPE 21	W12x15 STEEL BEAM
BEAM TYPE 22	W12x15 STEEL BEAM
BEAM TYPE 23	W12x15 STEEL BEAM
BEAM TYPE 24	W12x15 STEEL BEAM
BEAM TYPE 25	W12x15 STEEL BEAM
BEAM TYPE 26	W12x15 STEEL BEAM
BEAM TYPE 27	W12x15 STEEL BEAM
BEAM TYPE 28	W12x15 STEEL BEAM
BEAM TYPE 29	W12x15 STEEL BEAM
BEAM TYPE 30	W12x15 STEEL BEAM
BEAM TYPE 31	W12x15 STEEL BEAM
BEAM TYPE 32	W12x15 STEEL BEAM
BEAM TYPE 33	W12x15 STEEL BEAM
BEAM TYPE 34	W12x15 STEEL BEAM
BEAM TYPE 35	W12x15 STEEL BEAM
BEAM TYPE 36	W12x15 STEEL BEAM
BEAM TYPE 37	W12x15 STEEL BEAM
BEAM TYPE 38	W12x15 STEEL BEAM
BEAM TYPE 39	W12x15 STEEL BEAM
BEAM TYPE 40	W12x15 STEEL BEAM
BEAM TYPE 41	W12x15 STEEL BEAM
BEAM TYPE 42	W12x15 STEEL BEAM
BEAM TYPE 43	W12x15 STEEL BEAM
BEAM TYPE 44	W12x15 STEEL BEAM
BEAM TYPE 45	W12x15 STEEL BEAM
BEAM TYPE 46	W12x15 STEEL BEAM
BEAM TYPE 47	W12x15 STEEL BEAM
BEAM TYPE 48	W12x15 STEEL BEAM
BEAM TYPE 49	W12x15 STEEL BEAM
BEAM TYPE 50	W12x15 STEEL BEAM
BEAM TYPE 51	W12x15 STEEL BEAM
BEAM TYPE 52	W12x15 STEEL BEAM
BEAM TYPE 53	W12x15 STEEL BEAM
BEAM TYPE 54	W12x15 STEEL BEAM
BEAM TYPE 55	W12x15 STEEL BEAM
BEAM TYPE 56	W12x15 STEEL BEAM
BEAM TYPE 57	W12x15 STEEL BEAM
BEAM TYPE 58	W12x15 STEEL BEAM
BEAM TYPE 59	W12x15 STEEL BEAM
BEAM TYPE 60	W12x15 STEEL BEAM
BEAM TYPE 61	W12x15 STEEL BEAM
BEAM TYPE 62	W12x15 STEEL BEAM
BEAM TYPE 63	W12x15 STEEL BEAM
BEAM TYPE 64	W12x15 STEEL BEAM
BEAM TYPE 65	W12x15 STEEL BEAM
BEAM TYPE 66	W12x15 STEEL BEAM
BEAM TYPE 67	W12x15 STEEL BEAM
BEAM TYPE 68	W12x15 STEEL BEAM
BEAM TYPE 69	W12x15 STEEL BEAM
BEAM TYPE 70	W12x15 STEEL BEAM
BEAM TYPE 71	W12x15 STEEL BEAM
BEAM TYPE 72	W12x15 STEEL BEAM
BEAM TYPE 73	W12x15 STEEL BEAM
BEAM TYPE 74	W12x15 STEEL BEAM
BEAM TYPE 75	W12x15 STEEL BEAM
BEAM TYPE 76	W12x15 STEEL BEAM
BEAM TYPE 77	W12x15 STEEL BEAM
BEAM TYPE 78	W12x15 STEEL BEAM
BEAM TYPE 79	W12x15 STEEL BEAM
BEAM TYPE 80	W12x15 STEEL BEAM
BEAM TYPE 81	W12x15 STEEL BEAM
BEAM TYPE 82	W12x15 STEEL BEAM
BEAM TYPE 83	W12x15 STEEL BEAM
BEAM TYPE 84	W12x15 STEEL BEAM
BEAM TYPE 85	W12x15 STEEL BEAM
BEAM TYPE 86	W12x15 STEEL BEAM
BEAM TYPE 87	W12x15 STEEL BEAM
BEAM TYPE 88	W12x15 STEEL BEAM
BEAM TYPE 89	W12x15 STEEL BEAM
BEAM TYPE 90	W12x15 STEEL BEAM
BEAM TYPE 91	W12x15 STEEL BEAM
BEAM TYPE 92	W12x15 STEEL BEAM
BEAM TYPE 93	W12x15 STEEL BEAM
BEAM TYPE 94	W12x15 STEEL BEAM
BEAM TYPE 95	W12x15 STEEL BEAM
BEAM TYPE 96	W12x15 STEEL BEAM
BEAM TYPE 97	W12x15 STEEL BEAM
BEAM TYPE 98	W12x15 STEEL BEAM
BEAM TYPE 99	W12x15 STEEL BEAM
BEAM TYPE 100	W12x15 STEEL BEAM

REVISIONS	DATE	APPROVAL
1	Jan 6, 2021	2121
2		3221
3		51121
4		6921

ADDITION & ALTERATIONS  
 For  
 TRUE LIFE CHURCH  
 1615 SILVERNAIL RD  
 WAUKESHA, WI 53188

# STRUCTURAL STEEL FRAMING PLAN & DETAILS

**arc central llc.**  
 James Lucas  
 architecture construction management interior design  
 1930 1st N wisconsin rapids, WI 54494  
 arccentralinc@outlook.com 715-572-2698

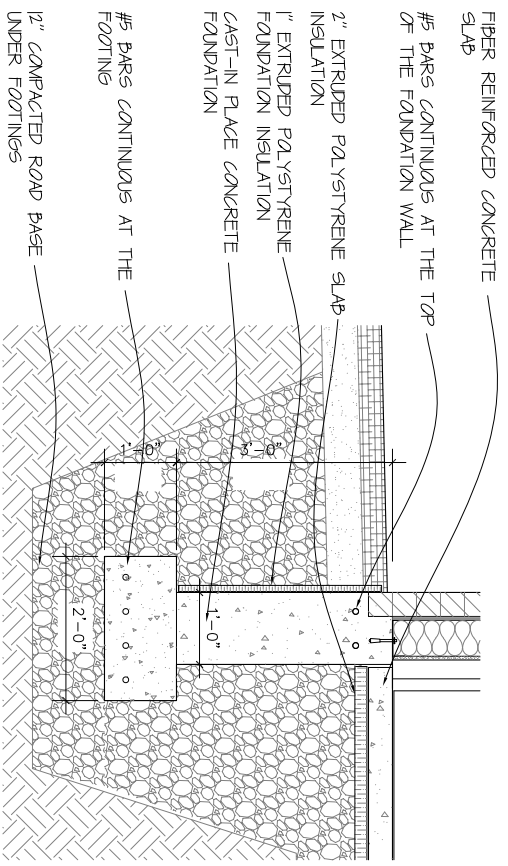


REVISIONS	DATE	DESCRIPTION
2121	2/21	SCHEM DES.
3221	3/21	DES DEV.
51121	5/11/21	CONST DOC'S
6921	6/9/21	APPROVAL

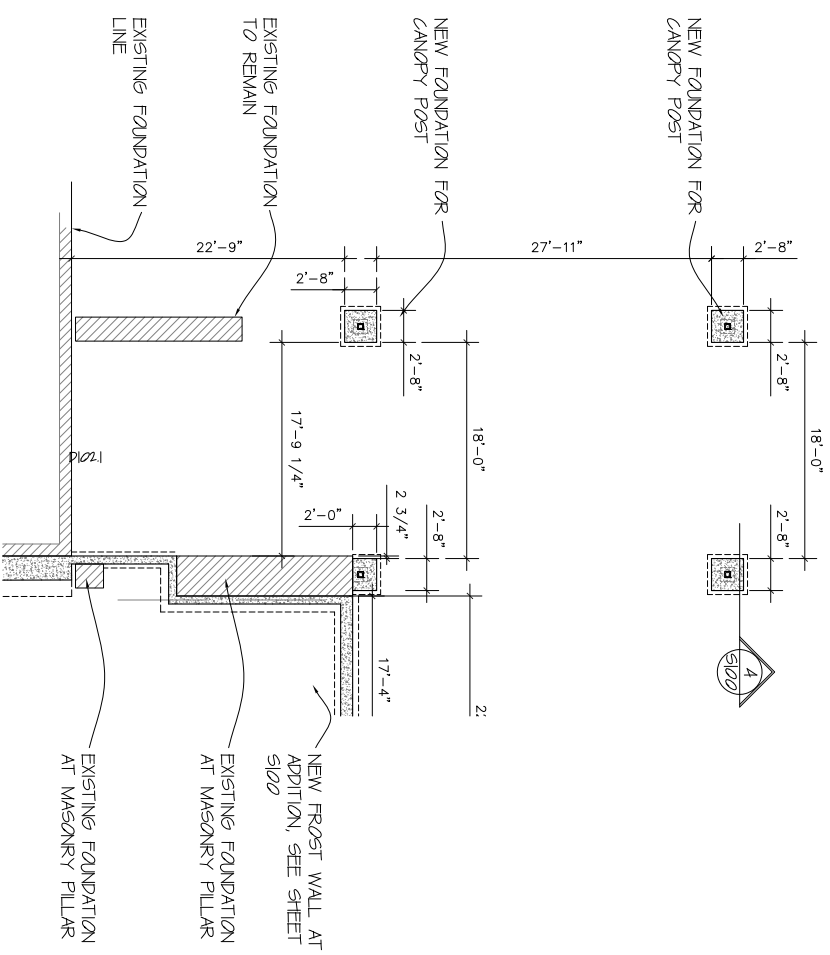
PROJECT NO. 21 001  
DATE: Jan 6, 2021

ADDITION & ALTERATIONS  
For  
TRUE LIFE CHURCH  
1615 SILVERNAIL RD  
WAUKESHA, WI 53188

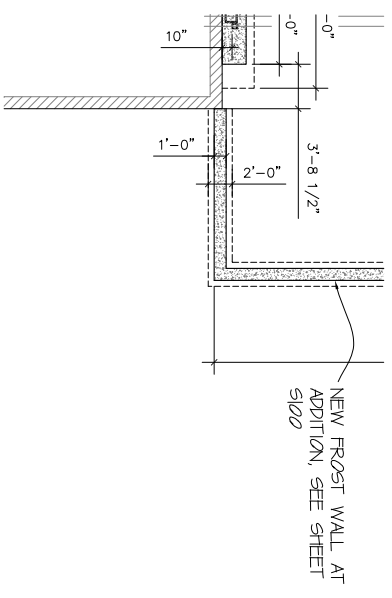
STRUCTURAL STEEL  
FRAMING PLAN &  
DETAILS



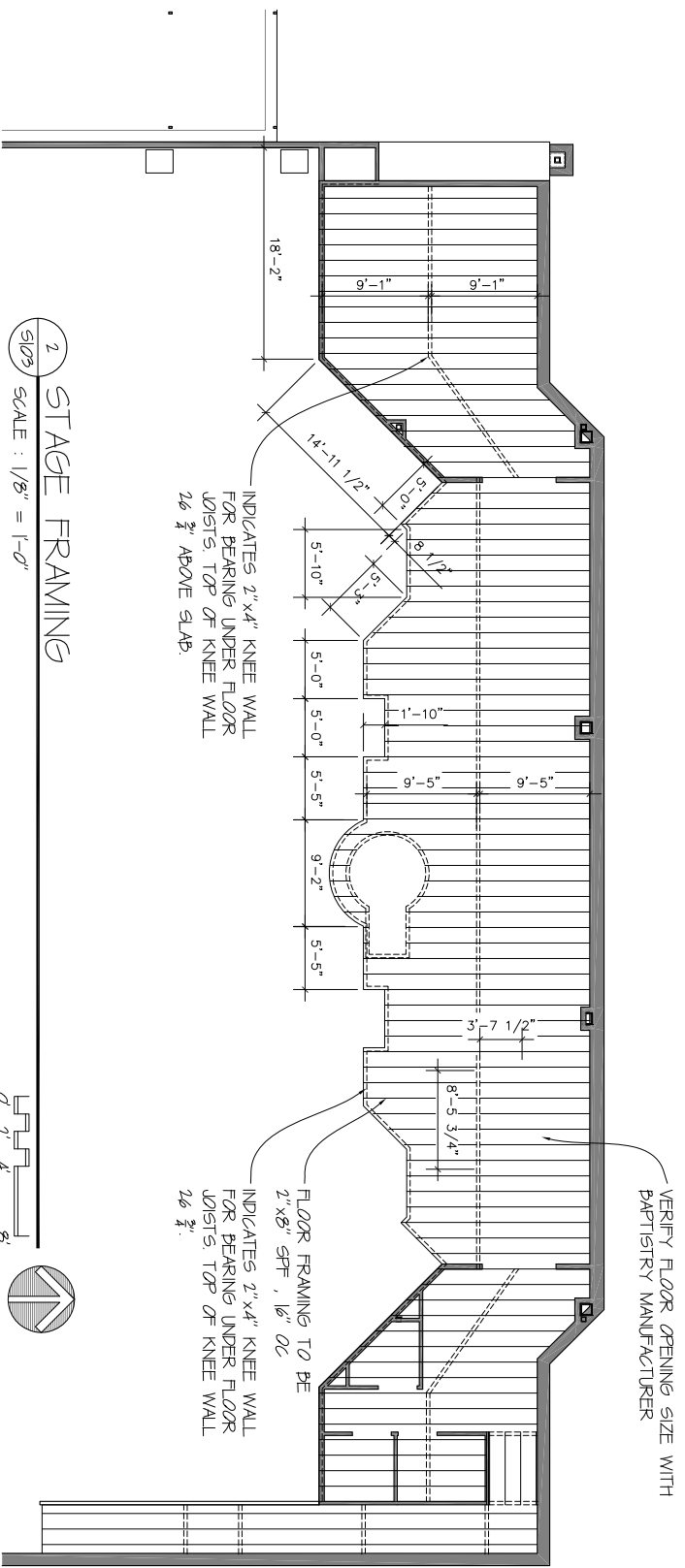
3 FOUNDATION DETAIL  
 S103 SCALE : 3/4" = 1'-0"  
 0 2' 4' 8' 12'



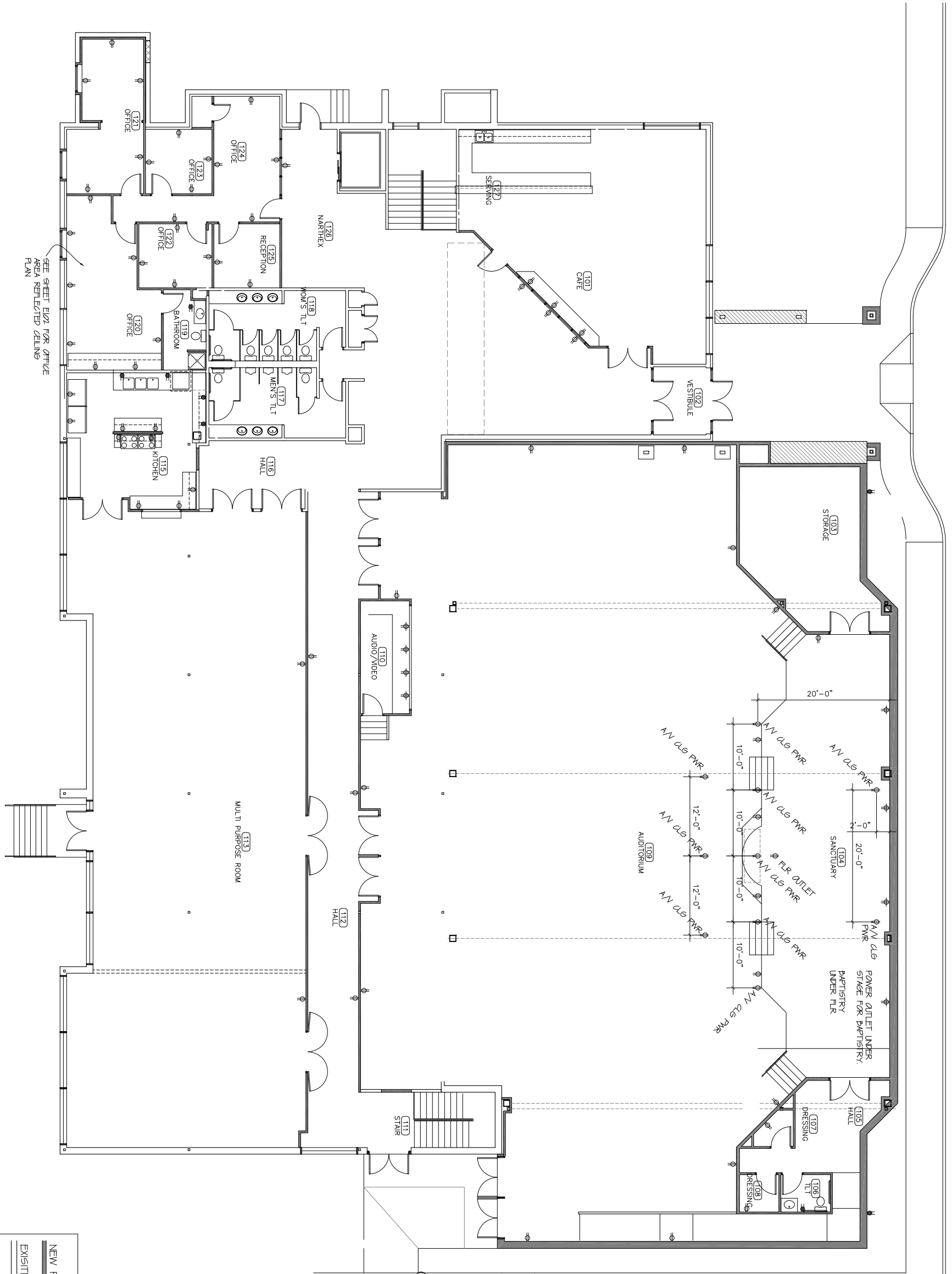
2 FOUNDATION AT COVERED ENTRY  
 S103 SCALE : 1/8" = 1'-0"  
 0 2' 4' 8' NORTH



1 FOUNDATION AT SE EXIT  
 S103 SCALE : 1/8" = 1'-0"  
 0 2' 4' 8' NORTH



2 STAGE FRAMING  
 S103 SCALE : 1/8" = 1'-0"  
 0 2' 4' 8' NORTH



**1** FIRST FLOOR POWER PLAN  
 SCALE: 1/4" = 1'-0" FOR 24"x36" SHEETS  
 SCALE: 1/8" = 1'-0" FOR 11"x17" SHEETS

NEW PARTITION
EXISTING PARTITION TO REMAIN
TO BE DEMOLISHED

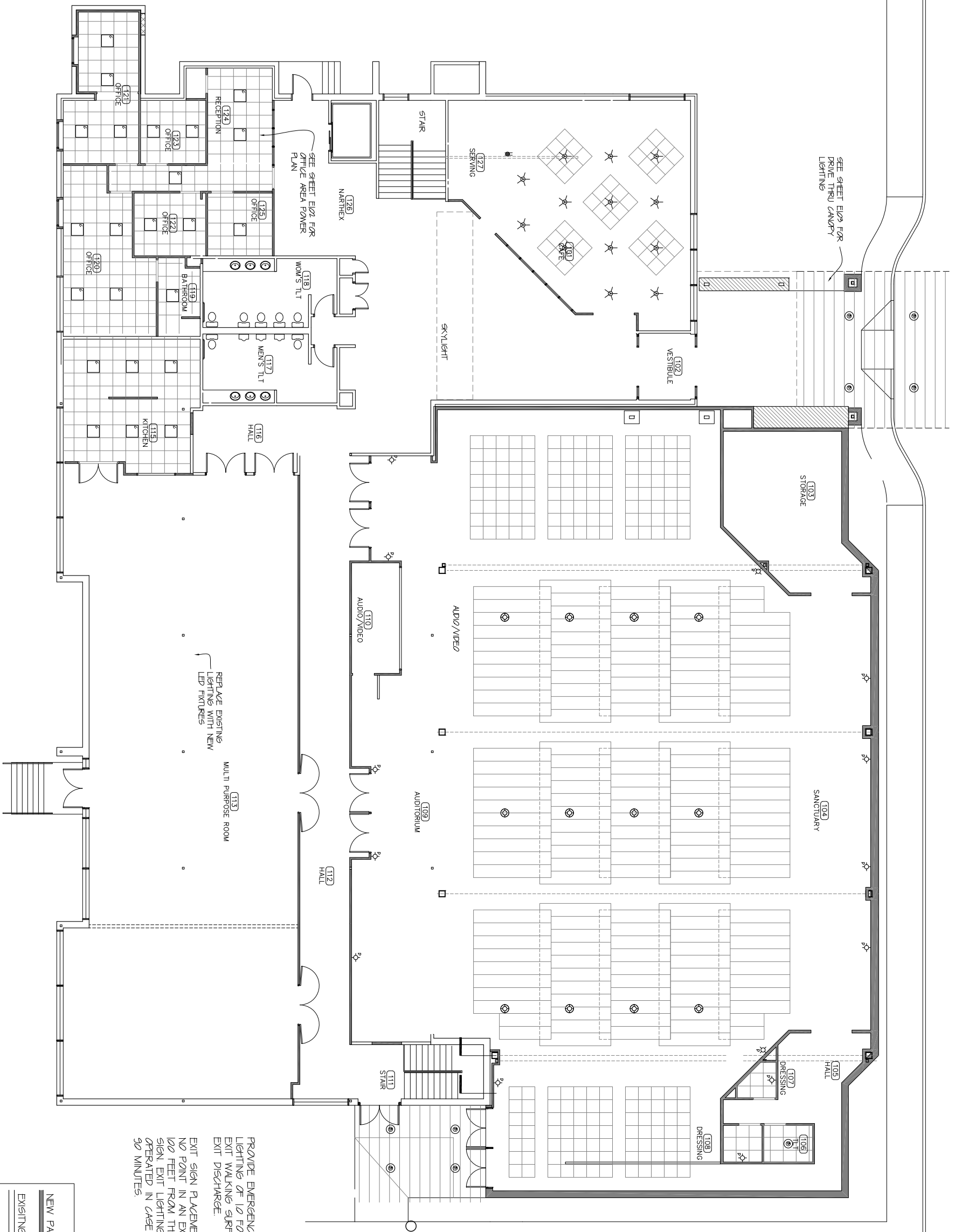
	GFCI DUPLEX OUTLET
	DUPLEX OUTLET
	4-PRX OUTLET
	240 VOLT OUTLET
	TILE OR DATA OUTLET
	PWR, TILE OR DATA OUTLET

E101

REVISIONS	
DATE	DESCRIPTION
21.001	PROJECT NO.
6.2021	DATE
5.11.21	CONSTRUCTION DOCUMENTS
3.2.21	DESIGN DEVELOPMENT
2.1.21	SCHEMATIC DESIGN

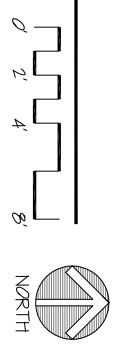
ADDITION & ALTERATIONS  
 For  
 TRUE LIFE CHURCH  
 1615 SILVERNAIL RD  
 WAUKESHA, WI 53188

FIRST FLOOR  
 POWER PLAN



**1** FIRST FLOOR POWER PLAN

SCALE : 1/4" = 1'-0" FOR 24"x36" SHEETS  
 SCALE : 1/8" = 1'-0" FOR 11"x17" SHEETS



PROVIDE EMERGENCY BATTERY POWERED EXIT LIGHTING OF 10 FOOT CANDLE MINIMUM AT ALL EXIT WALKING SURFACES TO AND INCLUDING EXIT DISCHARGE.

EXIT SIGN PLACEMENT SHALL BE SUCH THAT NO POINT IN AN EXIT PASSAGE IS MORE THAN 100 FEET FROM THE NEAREST VISIBLE EXIT SIGN. EXIT LIGHTING SHALL BE BATTERY OPERATED IN CASE OF POWER OUTAGE FOR 90 MINUTES.

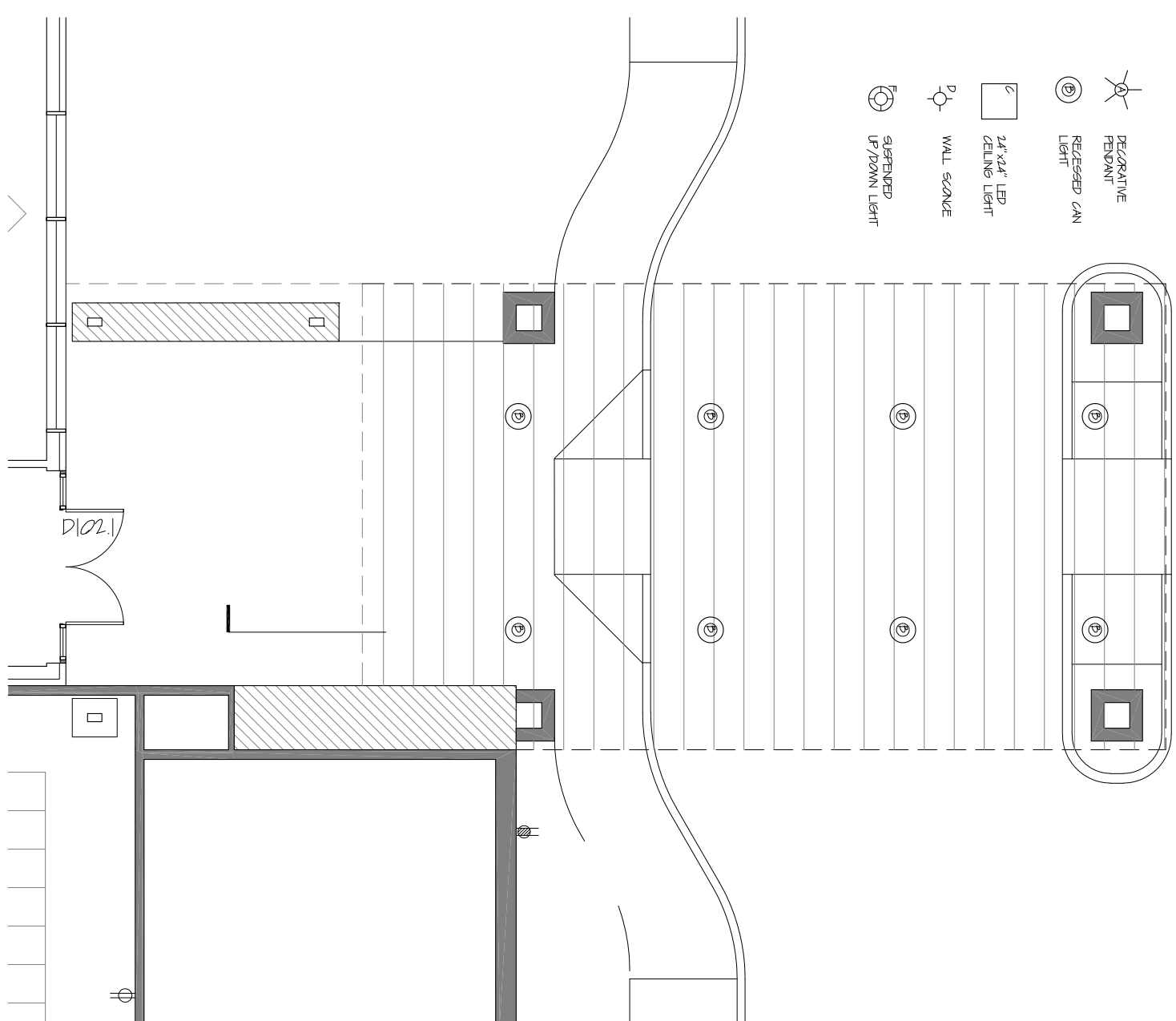
NEW PARTITION
EXISTING PARTITION TO REMAIN
TO BE DEMOLISHED



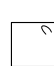
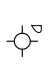



REVISIONS	SCHM DES.	2 21
	DES DEV.	3 21
	CONST DOC'S	5 121
	APPROVAL	6 21
DATE	Jan 6, 2021	
PROJECT NO	21 002	

ADDITION & ALTERATIONS  
 For  
 TRUE LIFE CHURCH  
 1615 SILVERNAIL RD  
 WAUKESHA, WI 53188

FIRST FLOOR  
 REFLECTED CEILING



-  DECORATIVE PENDANT LIGHT
-  RECESSED CAN LIGHT
-  24"x24" LED CEILING LIGHT
-  WALL SCONCE
-  SUSPENDED UP/DOWN LIGHT

**1 COVERED ENTRY PLAN**  
 E103 SCALE : 1/4" = 1'-0" FOR 24"x36" SHEETS  
 SCALE : 1/8" = 1'-0" FOR 11"x17" SHEETS  
 NORTH

REVISIONS

SCHM DES.	2.121
DES DEV.	3.2.21
CONST DOC'S	5.11.21
DATE	6.9.21
APPROVAL	
PROJECT NO.	21 001

ADDITION & ALTERATIONS  
 For  
 TRUE LIFE CHURCH  
 1615 SILVERNAIL RD  
 WAUKESHA, WI 53188

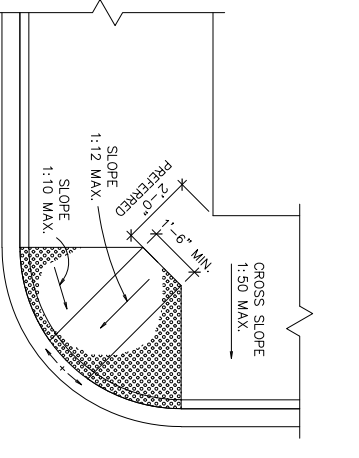
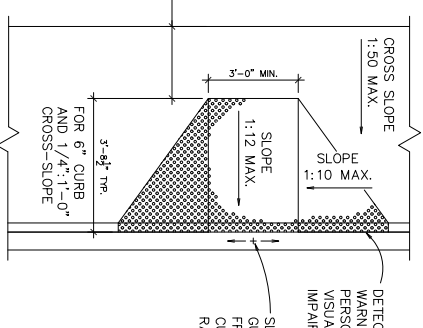
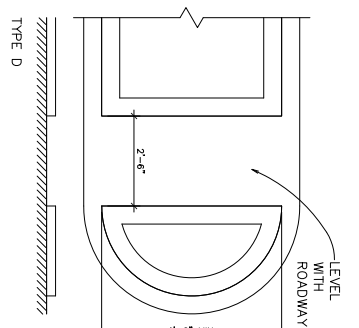
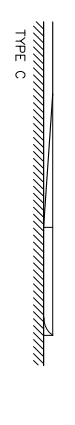
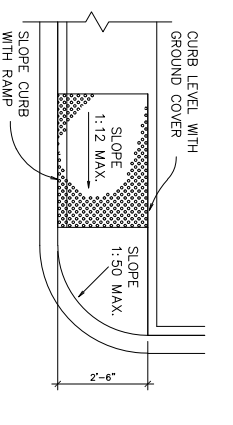
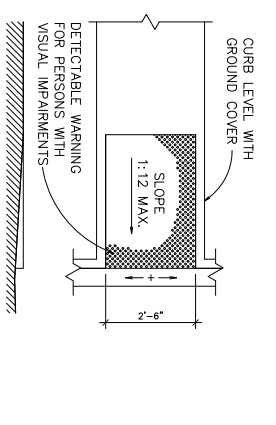
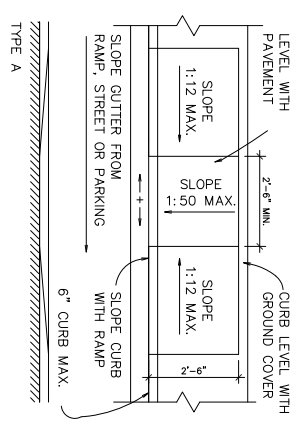
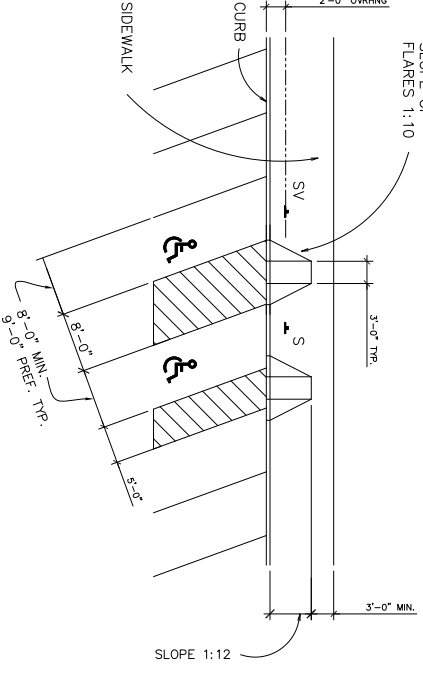
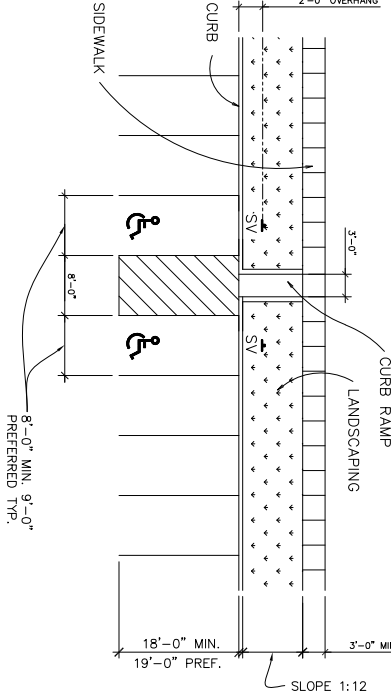
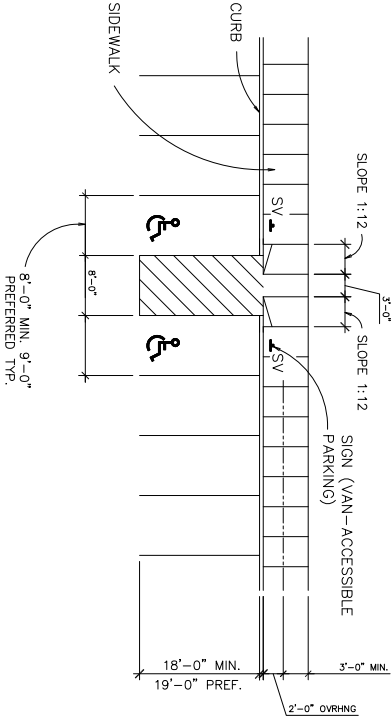
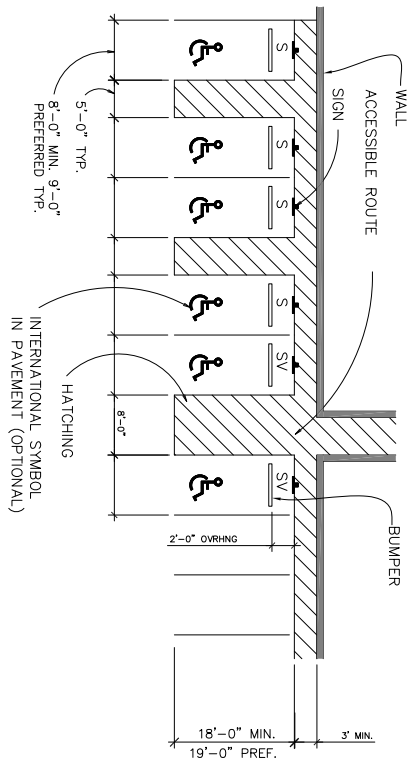
NEW COVERED  
 ENTRY ELECTRICAL  
 PLAN


 James Lucas  
 architecture construction management interior design  
 1930 1st N wisconsin rapids, WI 54494  
 arccentralinc@outlook.com 715-572-2698









NOTE  
If the 4 ft 0 in. preferred dimension cannot be met for type F, the 1:10 slope becomes 1:12 maximum.

