

SIGN SPECIFICATIONS

DIMENSIONAL LETTERS

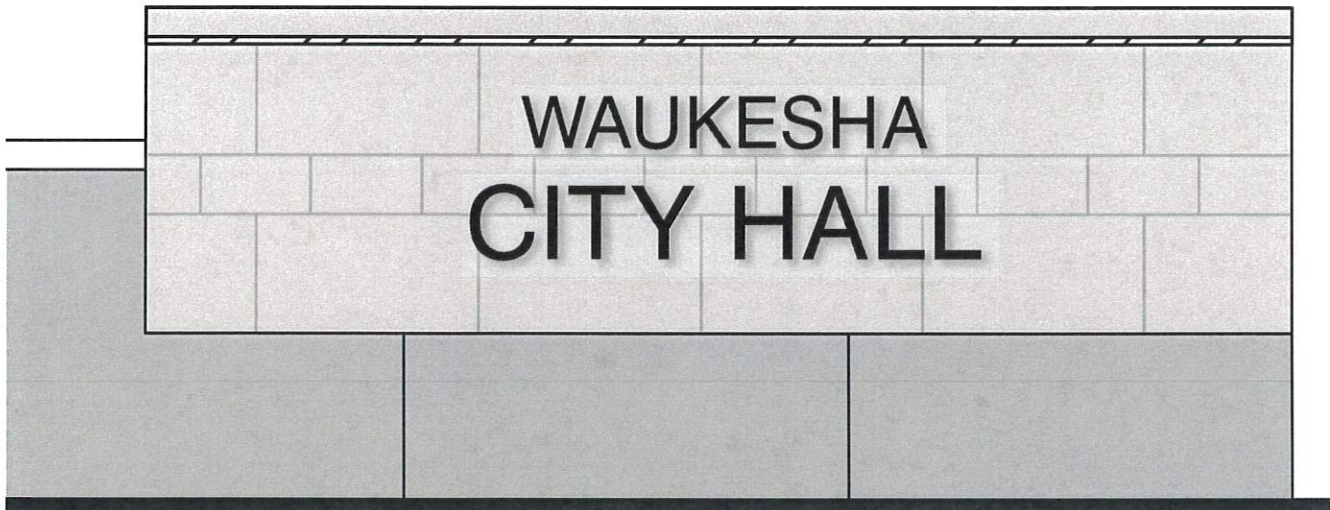
Material: 1/4" deep FCO Aluminum,
Painted to match Sherwin Williams
SW7069 Iron Ore

Font: Swis721 Win95BT - Roman

MOUNTING

Stud, Silicone [SL]

10.54 ↗



NTS



922 S. 70th St., Milwaukee, WI 53214
414.453.4010 • www.poblocki.com

This document is owned by and the information contained in it is proprietary to Poblocki Sign Company, LLC. By receipt hereof, the holder agrees not to use the information, disclose it to any third party or reproduce this document without the prior written consent of Poblocki Sign Company, LLC. Holder also agrees to immediately return this document upon request by Poblocki Sign Company, LLC.

This document represents only an approximation of material colors specified. Actual product colors may vary from this print or digital image.

Project



Waukesha
City Hall
Waukesha, WI

Scale: 3/4" = 1'

Original Page Size: 8 1/2" x 11"

Notes

Revisions

REV	DESCRIPTION	BY	DATE
-----	-------------	----	------

Rep.: Dan Schumann

Drawn By: Tim Kopp Orig. Date: 07/28/20

Sign Loc. No.

NL-01

Dimensional Letters

Sign. Type

85674

OPP - Project - Job No.

J01

Design

SIGN SPECIFICATIONS

DIMENSIONAL LETTERS

Material: 1/4" deep FCO Aluminum, Painted to match Sherwin Williams SW7069 Iron Ore
 Font: Swis721 Win95BT - Roman

MOUNTING

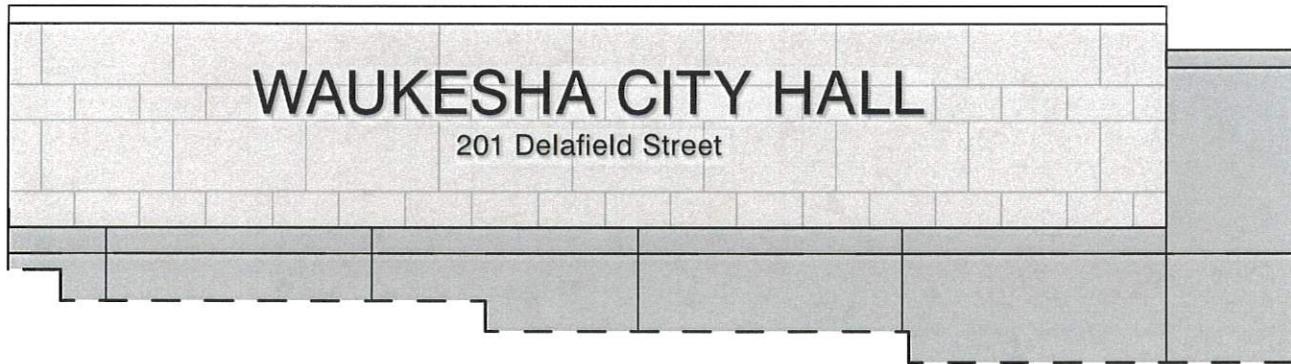
Stud, Silicone (SL)

20.19

Approx. 151"

10"
 4 1/2"
 4 3/4"

WAUKESHA CITY HALL
 201 Delafield Street



NTS



922 S. 70th St., Milwaukee, WI 53214
 414.453.4916 • www.poblockki.com

This document is owned by and the information contained in it is proprietary to Poblacki Sign Company, LLC. By accept hereof, the holder agrees not to use the information, disclose it to any third party or reproduce this document without the prior written consent of Poblacki Sign Company, LLC. Holder also agrees to immediately return this document upon request by Poblacki Sign Company, LLC.

This document represents only an approximation of material colors specified. Actual product colors may vary from this print or digital image.

Project



Waukesha
 City Hall
 Waukesha, WI

Scale: 3/4" = 1'

Original Page Size: 11" x 17"

Notes

Revisions

REV	DESCRIPTION	BY	DATE

Rep. Dan Schumann

Drawn By: Tim Kopp

(Orig. Date: 07/28/20)

Sign Loc. No. ,

NL-02

Dimensional Letters

Signs Type

85674

OPP - Project - Job No.

J01

Design

SIGN SPECIFICATIONS

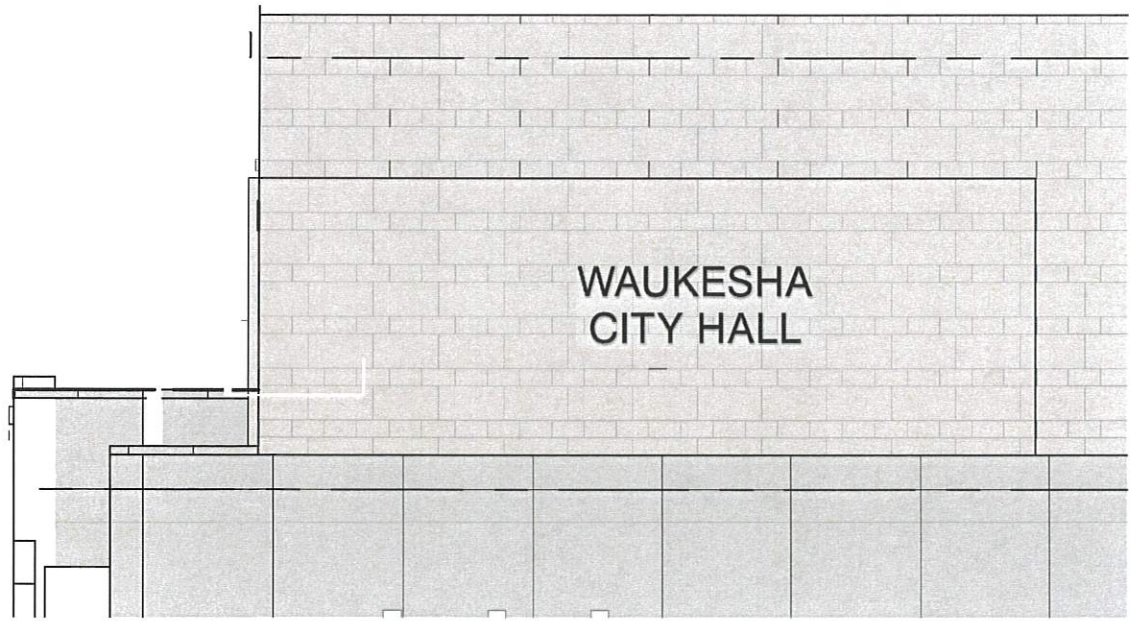
DIMENSIONAL LETTERS

Material: 1/4" deep FCO Aluminum, Painted to match Sherwin Williams SW7069 Iron Ore
 Font: Swis721 Win95BT - Roman

MOUNTING

Stud, Silicone (SL)

26.5 →



NTS



922 S. 75th St., Milwaukee, WI 53214
 414.453.4910 • www.poblocki.com

This document is owned by and the information contained in it is proprietary to Poblocki Sign Company, LLC. By receipt hereof, the holder agrees not to use the information, disclose it to any third party or reproduce this document without the prior written consent of Poblocki Sign Company, LLC. Holder also agrees to immediately return this document upon request by Poblocki Sign Company, LLC.

This document represents only an approximation of material colors specified. Actual product colors may vary from this print or digital image.

Project



Waukesha
 City Hall
 Waukesha, WI

Scale: 3/4" = 1'

Original Page Size: 11" x 17"

Notes

Revisions

REV	DESCRIPTION	BY	DATE
01	elevation	TK	9/11/20

Rep.: Dan Schumann
 Drawn By: Tim Kopp
 Date: 07/28/20

Sign Loc. No. .

NL-03

Dimensional Letters

Sign. Type

85674

OPP - Project - Job No.

J01

Design

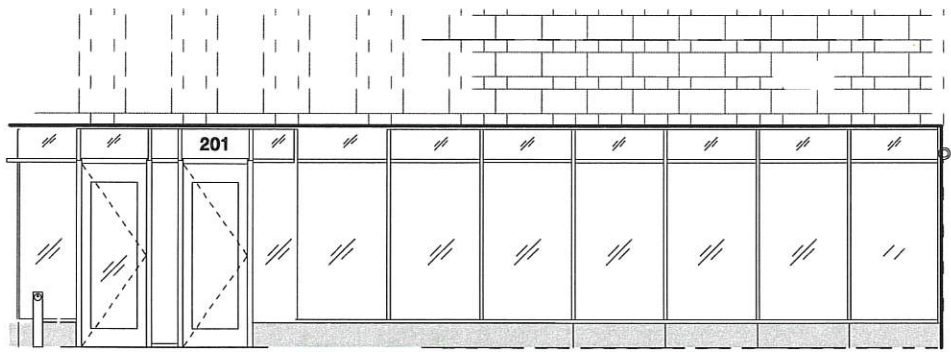
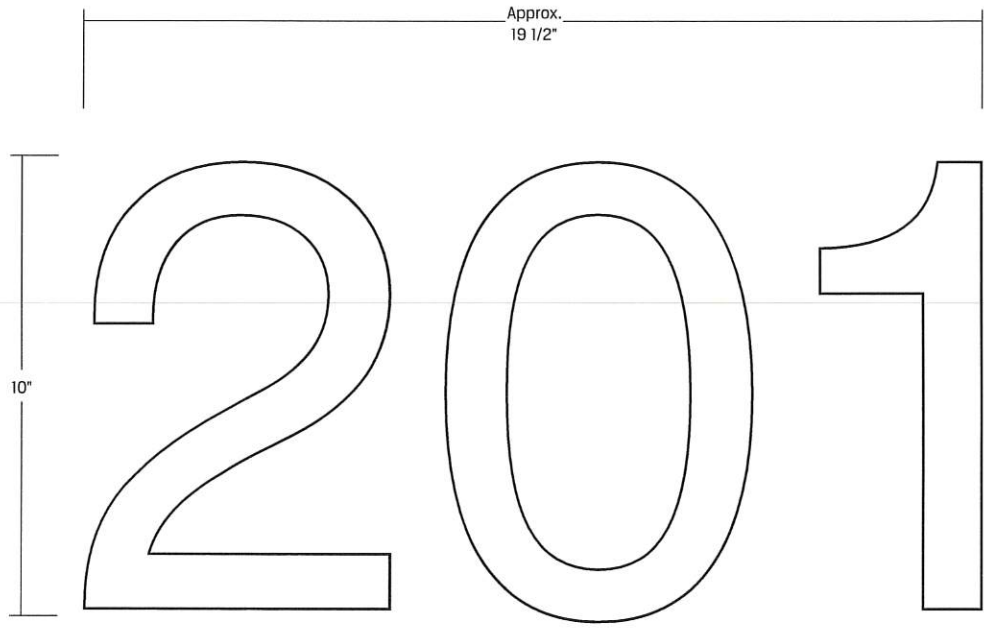
SIGN SPECIFICATIONS

VINYL LETTERS

Material: 3M Matte White Vinyl,
1st-Surface

Font: Swis721 Win95BT - Roman

1,35 ↗



Scale: 3/32"=1'



922 S. 70th St., Milwaukee, WI 53214
414.453.4010 • www.poblocki.com

This document is owned by and the information contained in it is proprietary to Poblocki Sign Company, LLC. By receipt hereof, the holder agrees not to use the information, disclose it to any third party or reproduce this document without the prior written consent of Poblocki Sign Company, LLC. Holder also agrees to immediately return this document upon request by Poblocki Sign Company, LLC.

This document represents only an approximation of material colors specified. Actual product colors may vary from this print or digital image.

Project



Waukesha
City Hall
Waukesha, WI

Scale: 1/4" = 1"

Original Page Size: 8 1/2" x 11"

Notes

Revisions

REV	DESCRIPTION	BY	DATE
01	add elevation	TK	8/3/20
01	move to transom	TK	9/11/20

Rep.: Dan Schumann

Drawn By: Tim Kopp Orig. Date: 07/28/20

Sign Loc. No.

VIN-03

Vinyl Letters
Sign. Type

85674

OPP - Project - Job No.

J01

Design

