

1 EAST ELEVATION  
CUP1 N.T.S.



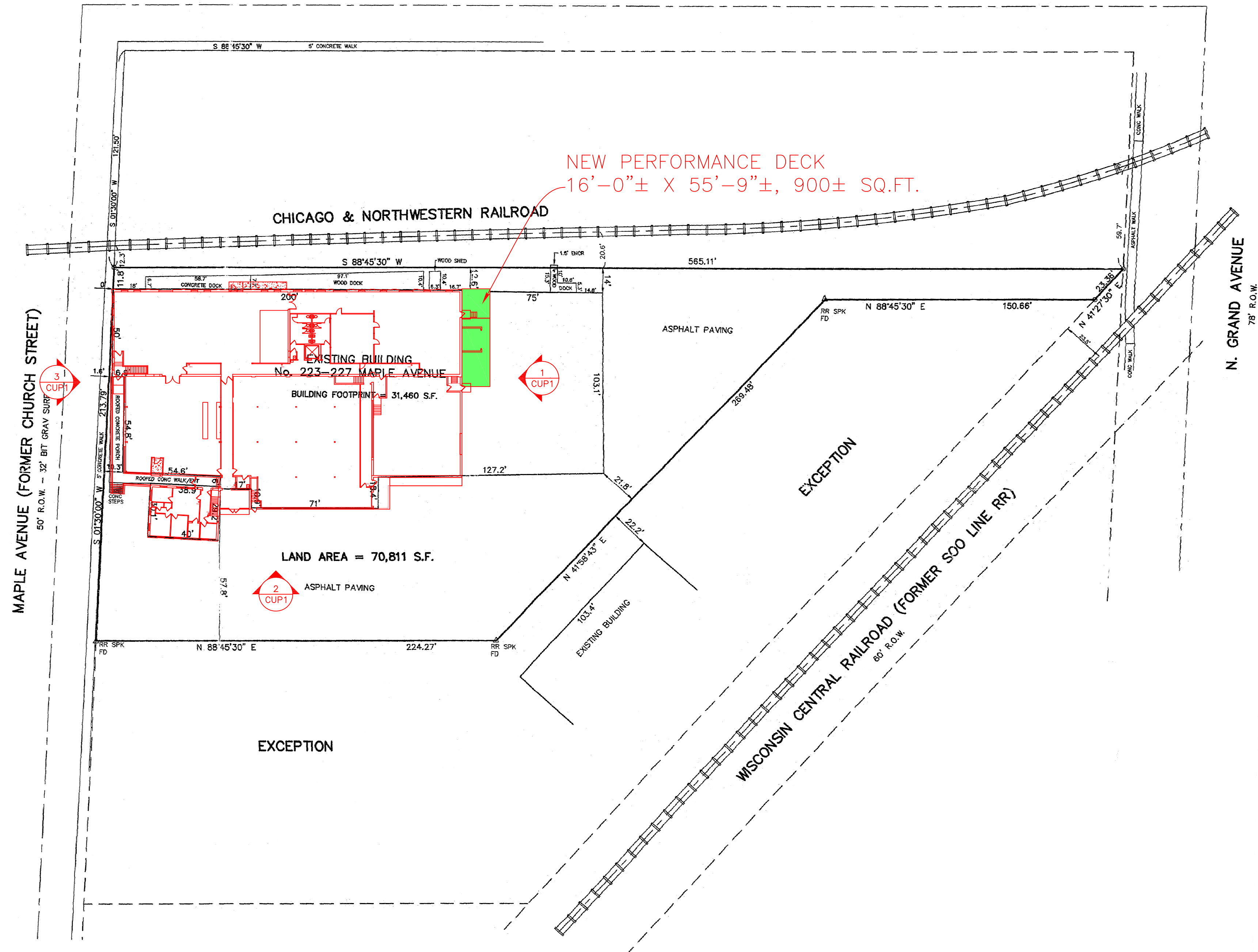
2 SOUTH ELEVATION  
CUP1 N.T.S.



3 WEST ELEVATION  
CUP1 N.T.S.

NEW PERFORMANCE DECK  
16'-0"± X 55'-9"±, 900± SQ.FT.

WILLIAMS STREET  
50' R.O.W.



SHEET INDEX	
SHEET #	SHEET TITLE
CUP-1	SURVEY AND SITE PLAN
CUP-2	PARKING PLAN
CUP-3	BASEMENT PLAN
CUP-4	FIRST FLOOR PLAN
CUP-5	SECOND FLOOR PLAN

TRUE NORTH PLAN NORTH

**SURVEY AND SITE PLAN**

1" = 40'-0"

0 40' 80' 120'

ATTRIBUTION OF SOURCE (SURVEY)

THIS SURVEY THAT IS INCORPORATED INTO THIS DRAWING WAS PREPARED BY JAHNKE & JAHNKE ASSOCIATES INC. IN 1999.

PRELIMINARY DRAWING  
NOT FOR CONSTRUCTION  
DATE PRINTED: 09/07/2018

**FISCHER-FISCHER-THEIS, INC.** ARCHITECTS • ENGINEERS • PLANNERS  
S22 W22660 BROADWAY • WAUKESHA, WISCONSIN 53186-8199  
(262) 547-6969 • FAX (262) 547-6960 • E-MAIL: [ff@ffarchitects.com](mailto:ff@ffarchitects.com)

INTERIOR ALTERATIONS  
**FISCHER CREATIVE ARTS CENTER**  
223 MAPLE AVENUE  
WAUKESHA, WISCONSIN

CONSULTANT

DATE	BY	REV #
09/10/2018	MTP	

PROJECT NO.  
**17048**

SHEET NO.  
**CUP-1**



Fischer Creative Arts Center  
223 Maple Ave  
Waukesha, WI 53186  
9/1/2018

**Parking Space Availability**

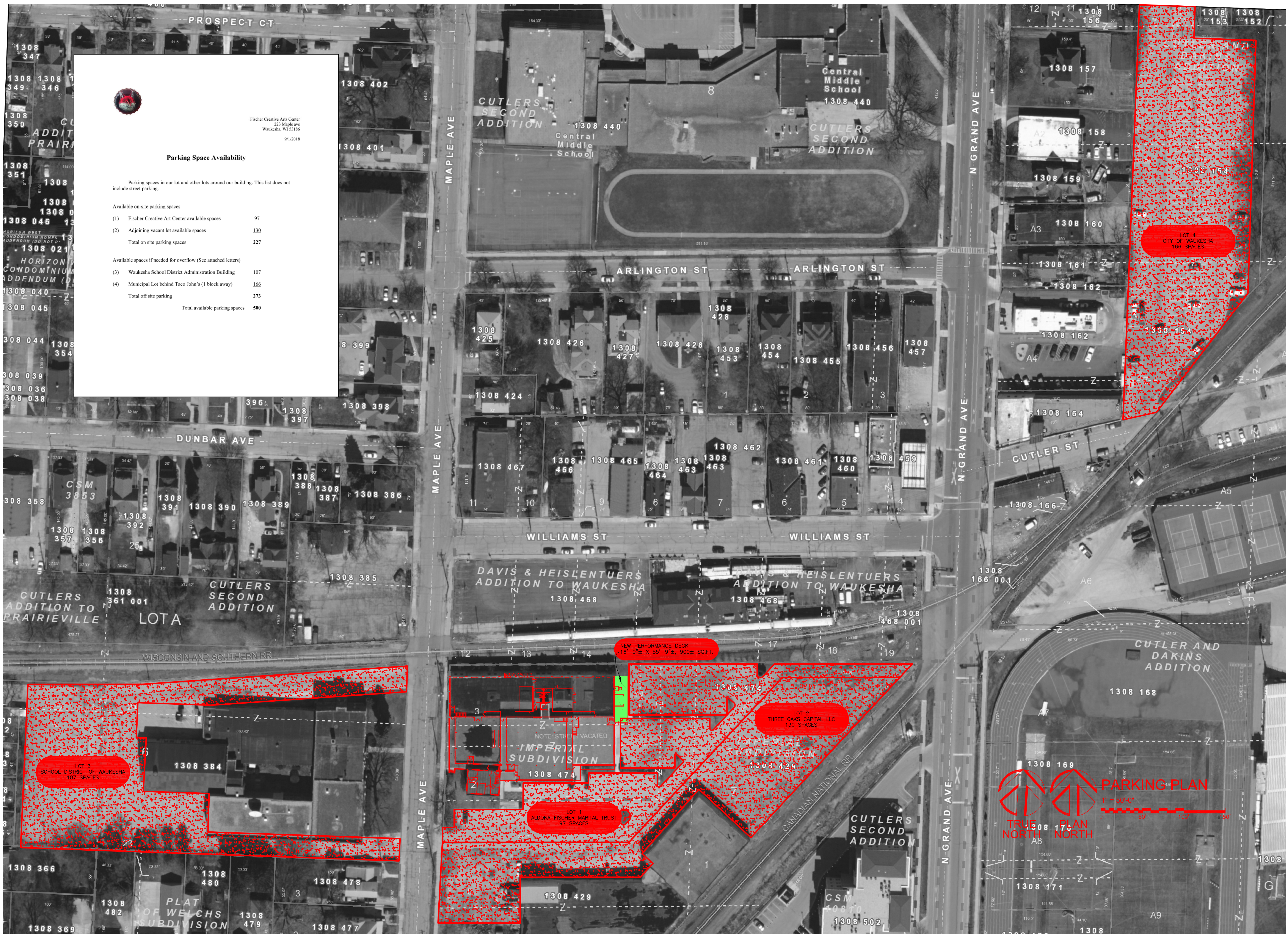
Parking spaces in our lot and other lots around our building. This list does not include street parking.

Available on-site parking spaces

- (1) Fischer Creative Art Center available spaces 97
- (2) Adjoining vacant lot available spaces 130
- Total on site parking spaces 227

Available spaces if needed for overflow (See attached letters)

- (3) Waukesha School District Administration Building 107
- (4) Municipal Lot behind Taco John's (1 block away) 166
- Total off site parking 273
- Total available parking spaces 500



PRELIMINARY DRAWING  
NOT FOR CONSTRUCTION  
DATE PRINTED: 09/07/2018

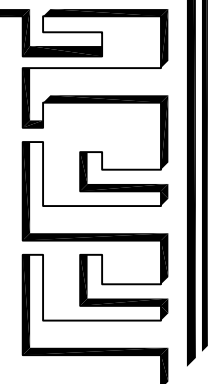
INTERIOR ALTERATIONS  
FISCHER CREATIVE ARTS CENTER  
223 MAPLE AVENUE  
WAUKESHA, WISCONSIN

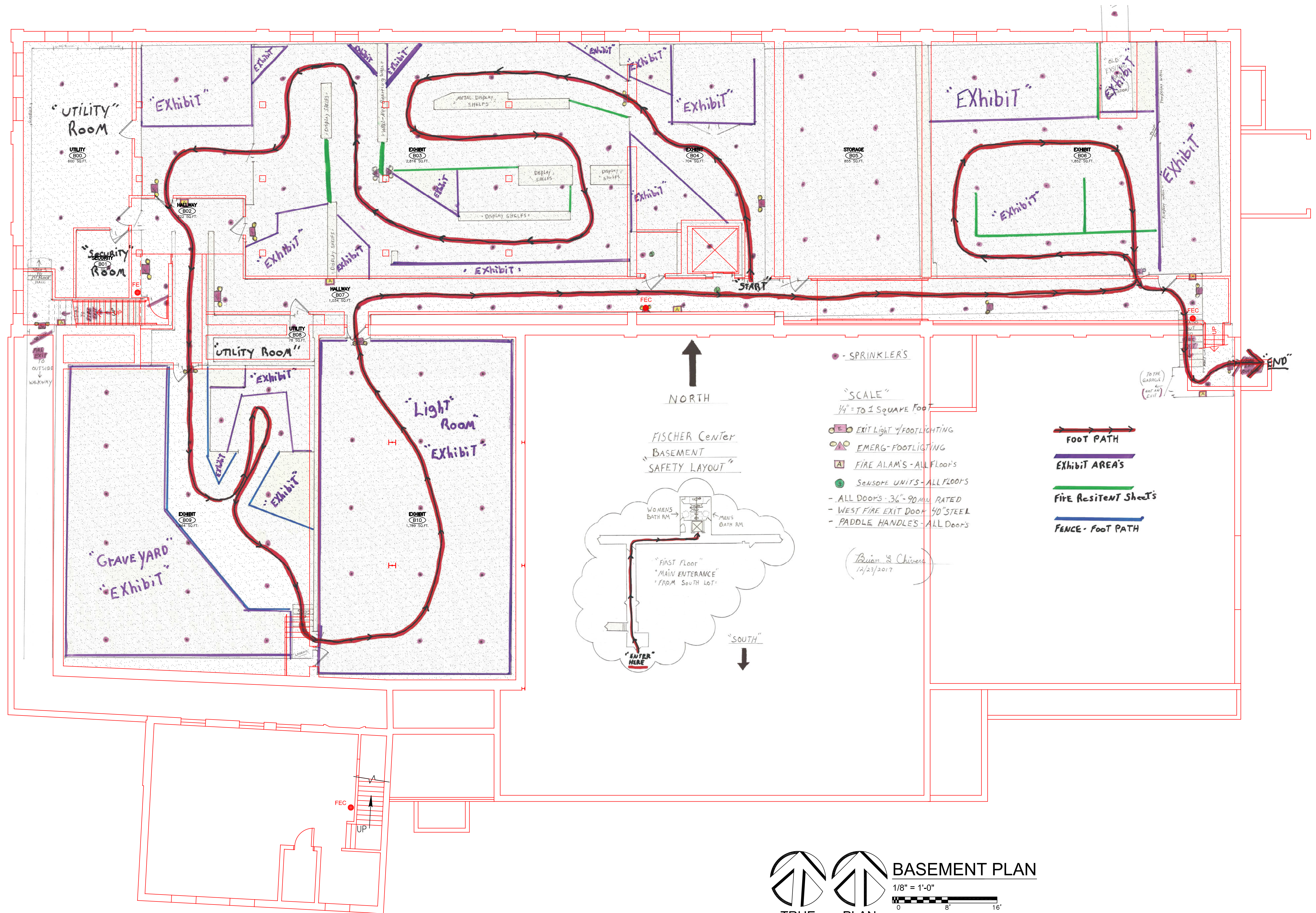
CONSULTANT

TYPE	DATE	BY	REV #
	09/10/2018	MTP	

PROJECT NO.  
17048  
SHEET NO.  
CUP-2

FISCHER-FISCHER-THESIS, INC. ARCHITECTS - ENGINEERS - PLANNERS  
S22 W22660 BROADWAY • WAUKESHA, WISCONSIN 53186-1199  
(262) 547-6969 • FAX (262) 547-6960 • E-MAIL: ffr@ftrarchitects.com





**ATTRIBUTION OF SOURCE (BASE DRAWING)**

THIS DRAWING WAS ORIGINALLY PREPARED BY PATERA, LLC IN 2005 (OR THEREABOUTS) AND REFERENCED TO THEIR PROJECT NO. 05-354. IT WAS OBTAINED BY FISCHER-FISCHER-THEIS, INC. (WITH THE KNOWLEDGE OF PATERA, LLC) AND MODIFIED, IN PART, TO REFLECT EXISTING CONDITIONS AS OF AUGUST, 2016.

**ATTRIBUTION OF SOURCE (FREEHAND DRAWING AND NOTES)**

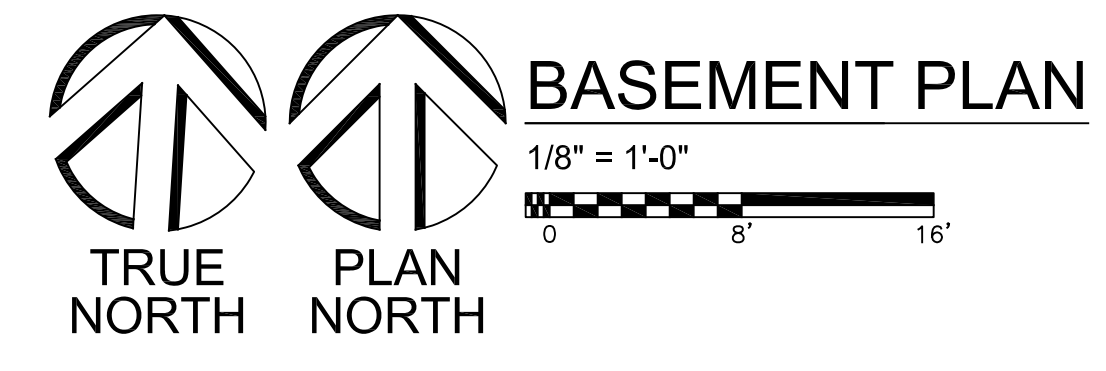
THIS DRAWING WAS PREPARED BY BRIAN CHIVERS, ACTING ON BEHALF OF FISCHER CREATIVE ARTS CENTER, AND GIVEN TO FISCHER-FISCHER-THEIS, INC. FOR INTEGRATION INTO THE BASE DRAWING.

**LEGEND**

1-HOUR SEPARATION  
2-HOUR SEPARATION

**LEGEND**

OCCUPANCY/USE: ASSEMBLY GROUP A-1  
OCCUPANCY/USE: ASSEMBLY GROUP A-2  
OCCUPANCY/USE: ASSEMBLY GROUP A-3  
OCCUPANCY/USE: BUSINESS GROUP B  
OCCUPANCY/USE: STORAGE GROUP S-2



**INTERIOR ALTERATIONS  
FISCHER CREATIVE ARTS CENTER**  
223 MAPLE AVENUE  
WAUKESHA, WISCONSIN

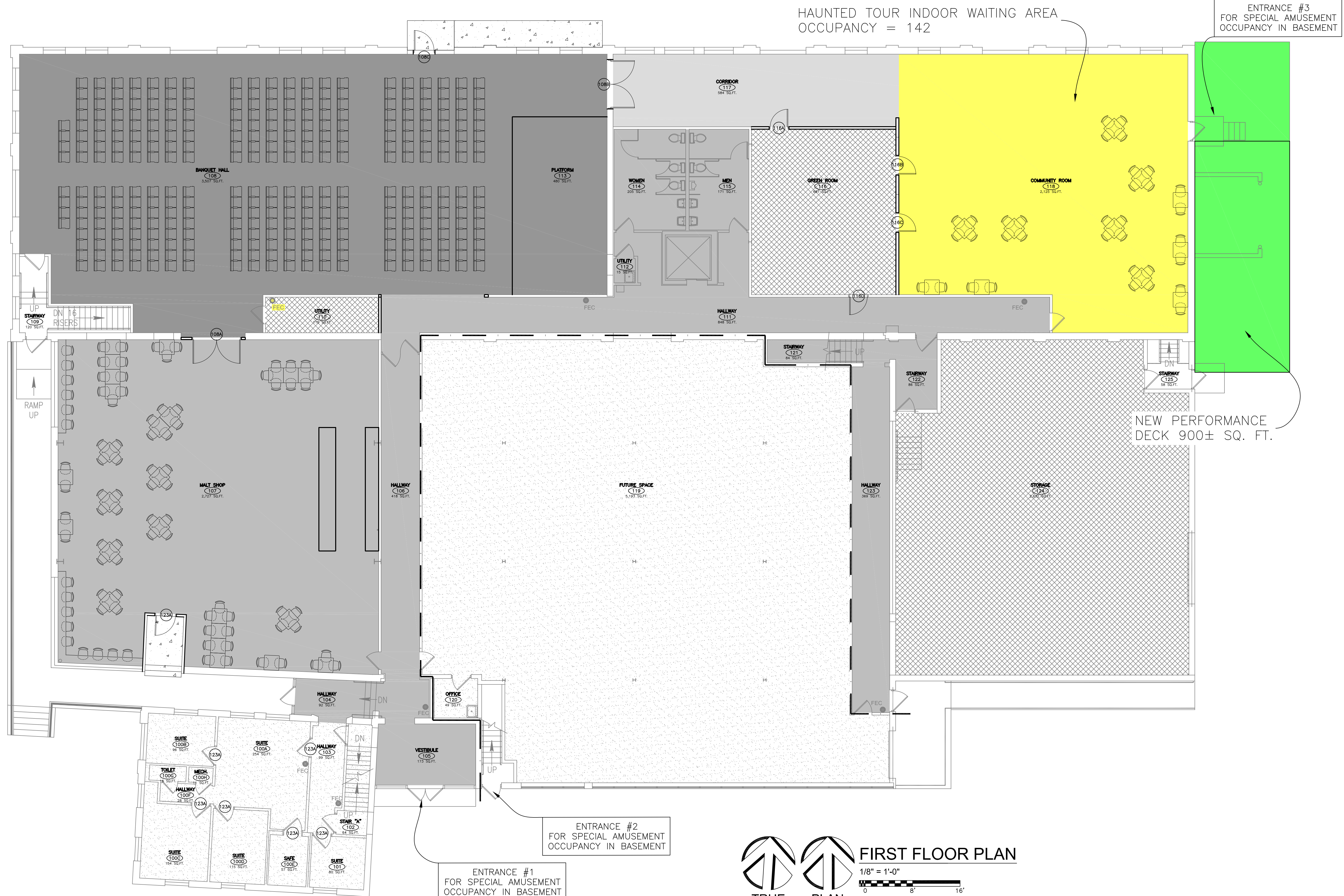
CONSULTANT

DATE	BY	REV #
09/10/2018	MTP	

PROJECT NO.  
**17048**  
SHEET NO.  
**CUP-3**

**PRELIMINARY DRAWING  
NOT FOR CONSTRUCTION**  
DATE PRINTED: 10/08/2018

**FISCHER-FISCHER-THEIS, INC.** ARCHITECTS • ENGINEERS • PLANNERS  
S22 W22660 BROADWAY • WAUKESHA, WISCONSIN 53186-8199  
(262) 547-6969 • FAX (262) 547-6960 • E-MAIL: [ff@fischertheis.com](mailto:ff@fischertheis.com)



TRUE NORTH PLAN NORTH  
 1/8" = 1'-0"  
 0 8' 16'

**ATTRIBUTION OF SOURCE (BASE DRAWING)**

THIS DRAWING WAS ORIGINALLY PREPARED BY PATERA, LLC IN 2005 (OR THEREABOUTS) AND REFERENCED TO THEIR PROJECT NO. 05-354. IT WAS OBTAINED BY FISCHER-FISCHER-THIS, INC. (WITH THE KNOWLEDGE OF PATERA, LLC) AND MODIFIED, IN PART, TO REFLECT EXISTING CONDITIONS AS OF AUGUST, 2016.

**DESIGN INFORMATION**

OCCUPANCY/USE: BUSINESS GROUP B  
 CONSTRUCTION CLASSIFICATION: TYPE III-B  
 ALLOWABLE AREA: UNLIMITED  
 FIRE PROTECTION: FULLY SPRINKLERED  
 SEISMIC DESIGN CATAGORY: A  
 BUILDING IMPORTANCE CATAGORY: IV

**LEGEND**

— — — — — 1-HOUR SEPARATION  
 - - - - - 2-HOUR SEPARATION

**LEGEND**

- OCCUPANCY/USE: ASSEMBLY GROUP A-1
- OCCUPANCY/USE: ASSEMBLY GROUP A-2
- OCCUPANCY/USE: ASSEMBLY GROUP A-3
- OCCUPANCY/USE: BUSINESS GROUP B
- OCCUPANCY/USE: STORAGE GROUP S-2

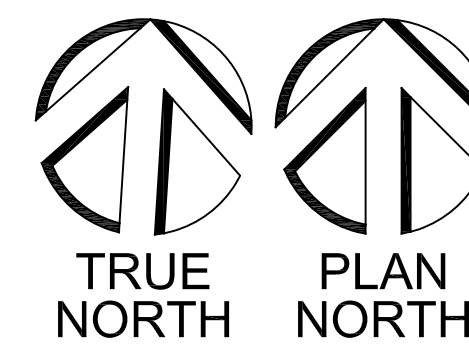
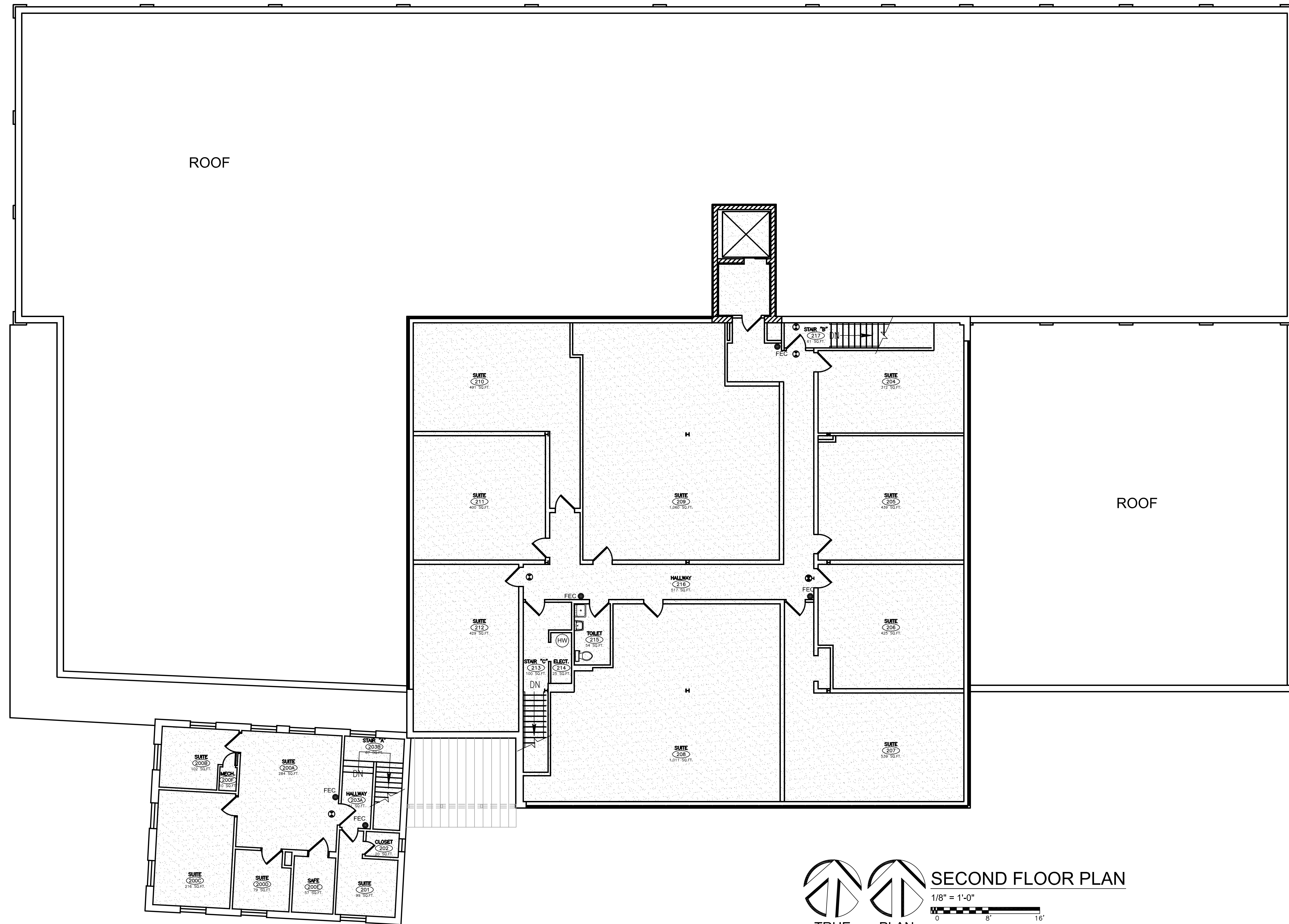
**PRELIMINARY DRAWING**  
 NOT FOR CONSTRUCTION  
 DATE PRINTED: 10/08/2018  
**FISCHER-FISCHER-THIS, INC.** ARCHITECTS • ENGINEERS • PLANNERS  
 S22 W22660 BROADWAY • WAUKESHA, WISCONSIN 53186-8199  
 (262) 547-6969 • FAX (262) 547-6960 • E-MAIL: [ff@fischerthis.com](mailto:ff@fischerthis.com)

**INTERIOR ALTERATIONS**  
**FISCHER CREATIVE ARTS CENTER**  
 223 MAPLE AVENUE  
 WAUKESHA, WISCONSIN

CONSULTANT

DATE	BY	REV #
09/10/2018	MTP	

PROJECT NO.  
**17048**  
 SHEET NO.  
**CUP-4**



**SECOND FLOOR PLAN**

1/8" = 1'-0"  
0 8' 16'

LEGEND	
— — — — —	1-HOUR SEPARATION
— — — — —	2-HOUR SEPARATION

LEGEND	
	OCCUPANCY/USE: ASSEMBLY GROUP A-1
	OCCUPANCY/USE: ASSEMBLY GROUP A-2
	OCCUPANCY/USE: ASSEMBLY GROUP A-3
	OCCUPANCY/USE: BUSINESS GROUP B
	OCCUPANCY/USE: STORAGE GROUP S-2

PRELIMINARY DRAWING  
NOT FOR CONSTRUCTION  
DATE PRINTED: 10/08/2018

INTERIOR ALTERATIONS  
FISCHER CREATIVE ARTS CENTER  
223 MAPLE AVENUE  
WAUKESHA, WISCONSIN

FISCHER-FISCHER-THESIS, INC. ARCHITECTS • ENGINEERS • PLANNERS  
S22, W22660 BROADWAY • WAUKESHA, WISCONSIN 53186-8199  
(262) 547-6969 • FAX (262) 547-6960 • E-MAIL: [ff@ffarchitects.com](mailto:ff@ffarchitects.com)

CONSULTANT

DATE	BY	REV
09/10/2018	MTP	

PROJECT NO.  
**17048**

SHEET NO.  
**CUP-5**

# MULTIPLE OCCUPANCIES

□- I AM USING SEPARATED USES IN MY DESIGN. (BC 302.3.3)  
 X- I AM USING NON-SEPARATED USES IN MY DESIGN. (BC 302.3.2)  
 ◻- I AM USING A COMBINATION OF SEPARATED AND NON-SEPARATED USES IN MY DESIGN.

SEPARATED USES			NON-SEPARATED USES			CONSTRUCTION TYPE: VB		
LOCATION (STORY OR SIDE OF BUILDING)	OCCUPANCIES SEPARATED (BOTH CLASSIFICATIONS)	FIRE RATING (HOURLY RATING)	LOCATION (STORY OR SIDE OF BUILDING)	OCCUPANCIES NOT SEPARATED (ALL CLASSIFICATIONS)	MOST RESTRICTIVE			
ENTIRE BUILDING					B			

# BUILDING AREAS

TOTAL AREA                      xx,xxx GSF

TOTAL VOLUME                  xxx,xxx GCF

# DESIGN INFORMATION

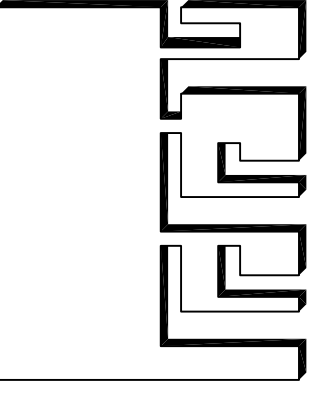
ALLOWABLE AREA CALCULATION	ROOM DESCRIPTION		OCCUPANT LOAD					EGRESS WIDTH				SANITARY FIXTURE DETERMINATION																
	ALLOWABLE AREA (A <sub>o</sub> ) BUILDING AREA	xx,xxx GSF xx,xxx GSF	ROOM OR SPACE DESIGNATION	OCCUPANCY OR USE	FLOOR AREA (SQUARE FEET)	DENSITY SF/PERSON	OCCUPANT LOAD BY CALCULATION	OCCUPANT LOAD BY ACTUAL NUMBER	OCCUPANT LOAD BY COMBINATION	ROOM OR SPACE TOTAL	OCCUPANTS ACCOUNTED FOR IN OTHER SPACES Y/N	OCCUPANT LOAD	STAIR WIDTH FACTOR	REQUIRED STAIR WIDTH	OTHER EGRESS COMPONENT FACTOR	OTHER EGRESS COMPONENT WIDTH	OCCUPANT LOAD	WATER CLOSETS			LAVATORIES		TUB / SHWR	D F		OTHER		
	THE BUILDING AREA IS LESS THAN THE ALLOWABLE AREA CALCULATED																	FACTORS	FIXTURES # MALE	FIXTURES # FEMALE	FACTORS	NUMBER FIXTURES	NUMBER FIXTURES	FACTORS	NUMBER FIXTURES	LIST THE TYPE		
$A_o = A_c + [(A_c)(I_r) / 100] + [(A_c)(I_s) / 100]$ $A_c = x,xxx$ $I_r = xx.x$ $I_s = xxx$ (SPRINKLER INCREASE FOR ONE-STORY BLDG = 300 SPRINKLER INCREASE FOR MULTI-STORY BLDG = 200 BUILDING NOT COMPLETELY SPRINKLER PROTECTION = 0) $I_r = (100) [F / P - 0.25] (W / 30)$ $F = xxx'-x"$ $W = xx'$ $P = xxx'-x"$ BUILDING FRONTAGE LENGTH:     xxx'-x"     xxx'-x"     xxx'-x"     xxx'-x" NORTH WALL     EAST WALL     SOUTH WALL     WEST WALL MIN WIDTH OF OPEN SPACE:     xx'     xx'     xx'     xx' NORTH WALL     EAST WALL     SOUTH WALL     WEST WALL			B00	MECHANICAL	600 GSF	300 GSF	2																					
			B01	BUSINESS	94 GSF	100 GSF	1																					
			B02	NONE	-	-	-																					
			B03	BUSINESS	2,816 GSF	100 GSF	29																					
			B04	BUSINESS	704 GSF	100 GSF	8																					
			B05	ACC. STORAGE	855 GSF	300 GSF	3																					
			B06	BUSINESS	1,852 GSF	100 GSF	19																					
			B07	NONE	-	-	-																					
			B08	ACC. STORAGE	78 GSF	300 GSF	1																					
			B09	BUSINESS	1,964 GSF	100 GSF	20																					
			B10	BUSINESS	1,789 GSF	100 GSF	18																					

xxx = TOTAL OCCUPANT LOAD FOR THIS BUILDING

TOTAL BUILDING DESIGN OCCUPANCY = xxx

COMPLIANCE CHECK	MEN		WOMEN		LAVATORIES	BATH TUB / SHOWER	DRINKING FOUNTAIN	OTHER (LIST)
	URINALS	WATER CLOSETS	WATER CLOSETS	WATER CLOSETS				
REQUIRED	x	x	x	x	x	x	x	x SERV. SINK
PROVIDED	x	x	x UNISEX	x	x	x	x	x SERV. SINK

PRELIMINARY DRAWING  
 NOT FOR CONSTRUCTION  
 DATE PRINTED: 10/08/2018



INTERIOR ALTERATIONS  
 FISCHER CREATIVE ARTS CENTER  
 223 MAPLE AVENUE  
 WAUKESHA, WISCONSIN

CONSULTANT

DATE	BY	REV #
09/10/2018	MTP	

PROJECT NO.  
 17048  
 SHEET NO.  
 CUP-6

ARCHITECTS • ENGINEERS • PLANNERS  
 FISCHER-FISCHER-THEIS, INC.  
 S22 W22660 BROADWAY • WAUKESHA, WISCONSIN 53186-8199  
 (262) 547-6969 • FAX (262) 547-6960 • E-MAIL: ffr@ftrarchitects.com