

Waukesha
City Hall
Waukesha, WI

BWB R

1241 John Q Hammons Dr., Ste. 503

TLOW ROOF FRAMING - ZONE 1

608.829.3700

TSKY WALK ROOF FRAMING - ZONE 2

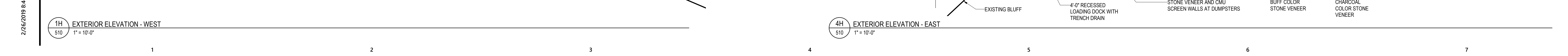
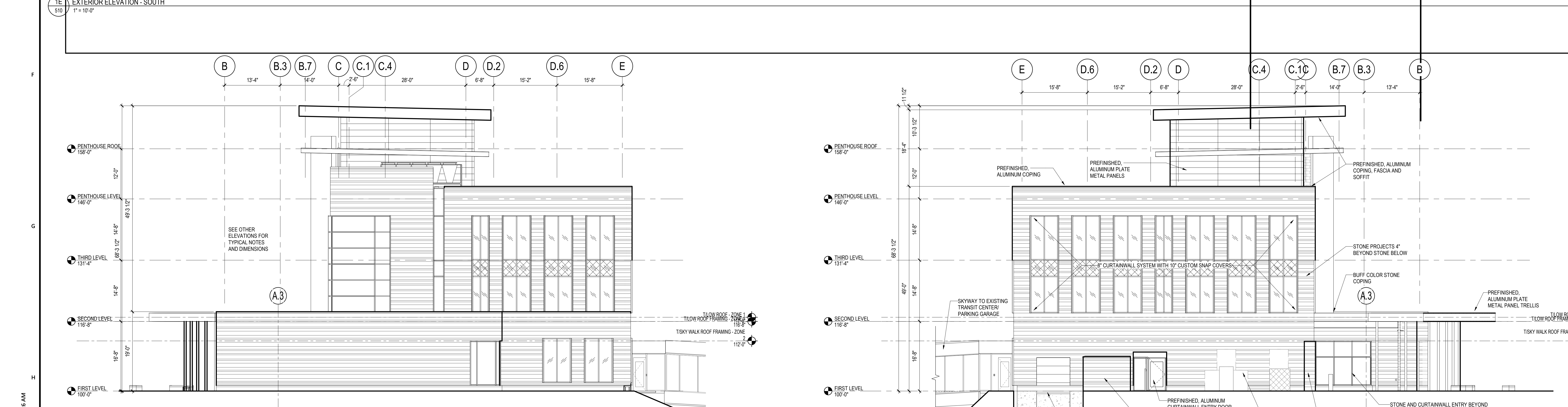
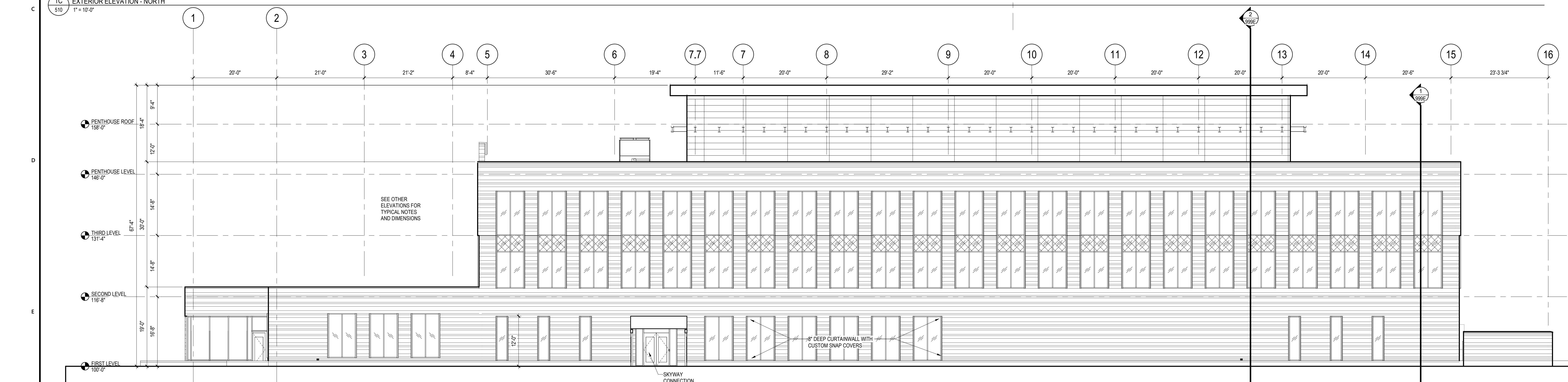
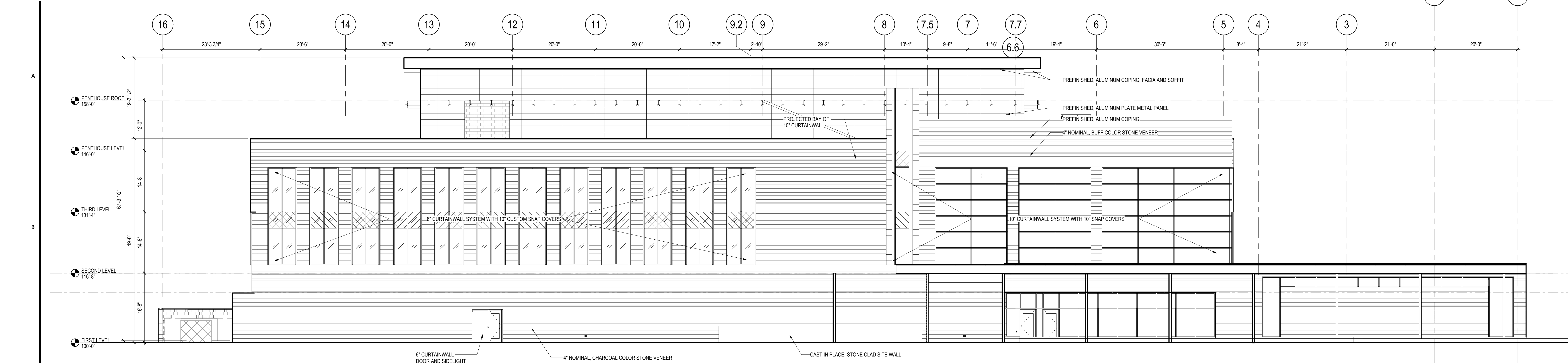
112.4

Consultants

This document may be an electronic file or may be printed from an electronic file provided to the user. It is the sole responsibility of the user to ensure that the content and quality is consistent with the content and quality of the original documents on file at BWBR.

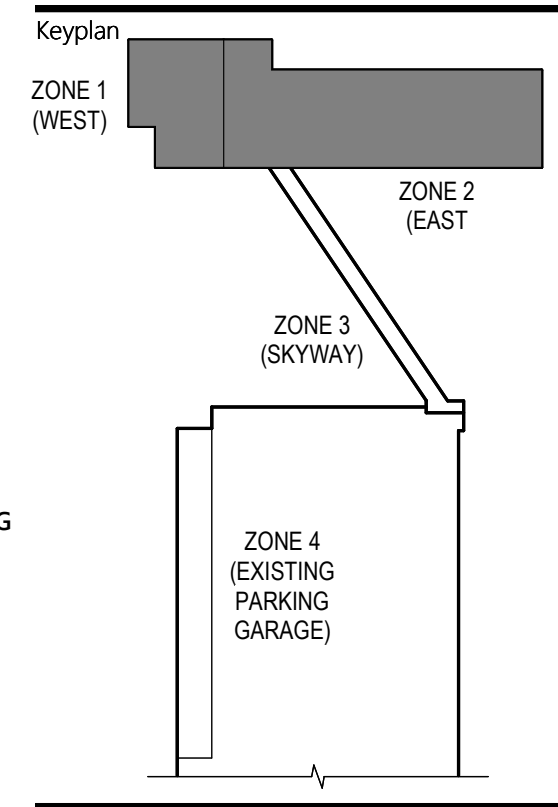
Issued For

Item Date



NOT FOR CONSTRUCTION

This sheet may be a Reduced Copy. The bar above is 1" long on a Full Size Sheet. Drawing Scales apply to Full Size Sheets.



Comm. No. 3.2018006.00

Drawn PH, AS

EXTERIOR ELEVATIONS - CITY HALL

Sheet No.

510

2/26/2019 8:46:26 AM

Copyright, BWBR