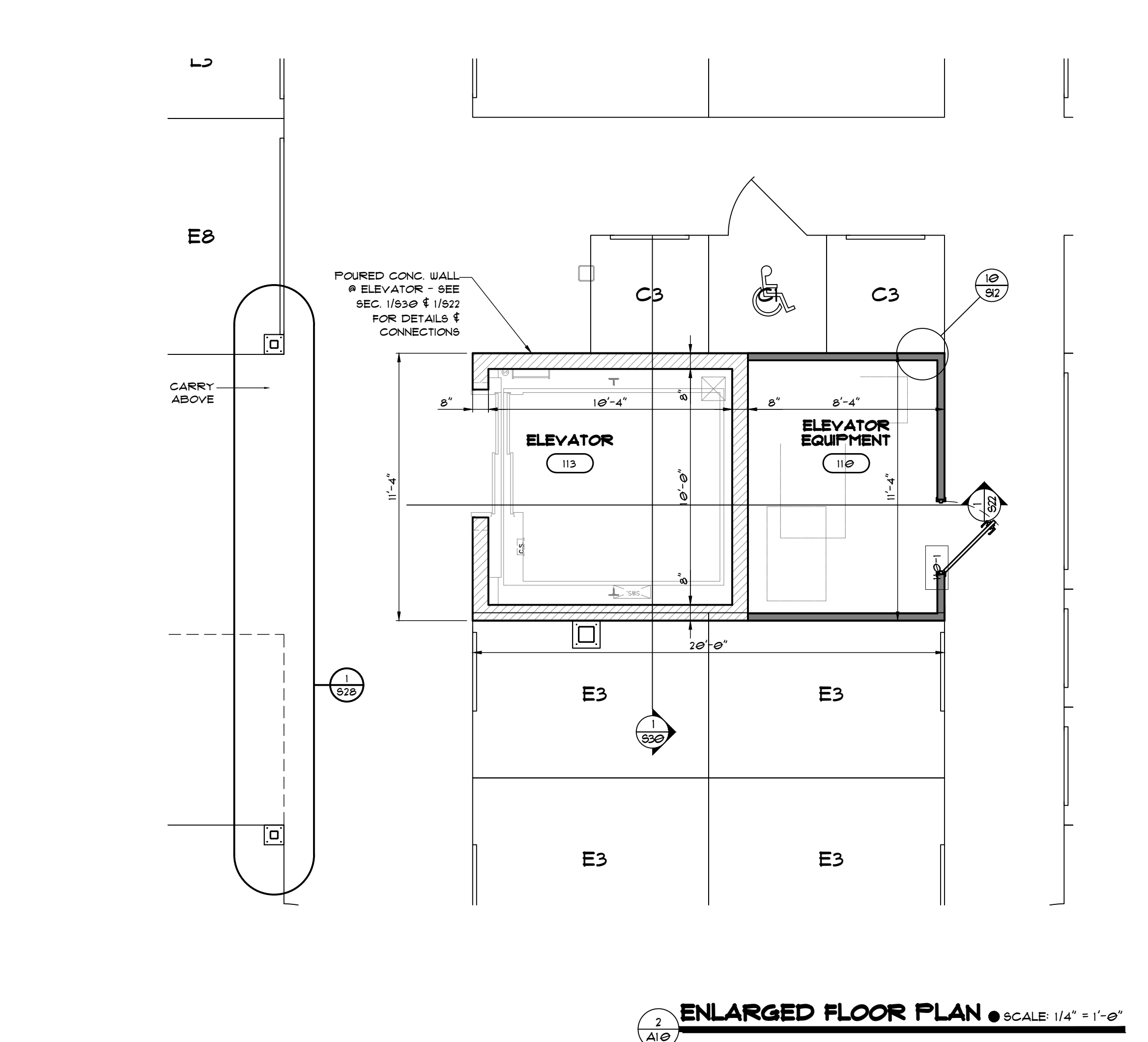
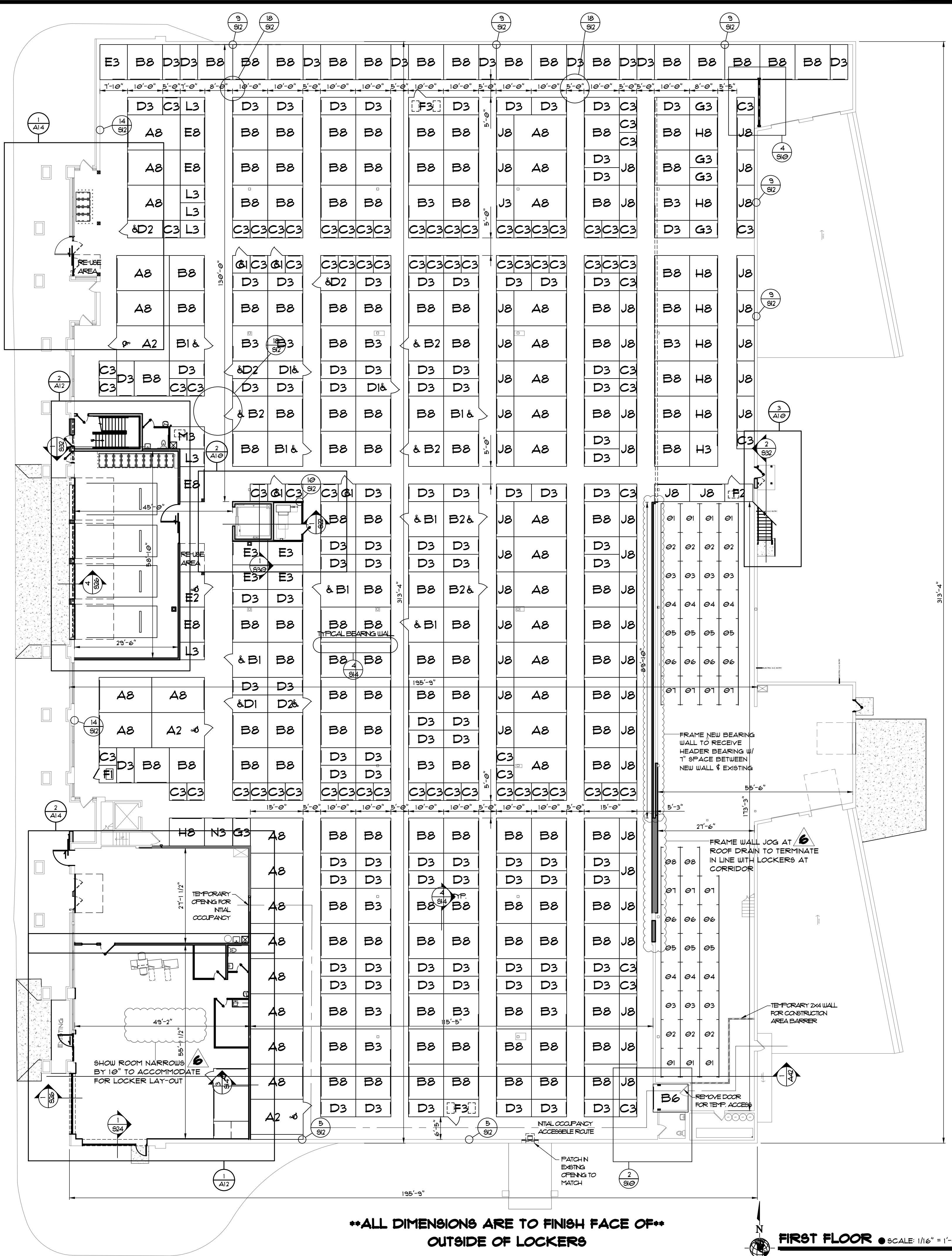


**TOTAL: 418 LOCKER UNIT CALL OUTS**

UNIT MARK	DOOR TYPE	FLOOR QTY.	UNITS SIZE
A2	LEFT HAND SWING 3'-4" X 1'-0" DOOR	3	10'-0" X 15'-0"
A3	3'-4" X 1'-0" ROLL UP DOOR	0	10'-0" X 15'-0"
A8	8'-0" X 1'-0" ROLL UP DOOR	32	10'-0" X 15'-0"
B1	RIGHT HAND SWING 3'-4" X 1'-0" DOOR	1	10'-0" X 10'-0"
B2	LEFT HAND SWING 3'-4" X 1'-0" DOOR	5	10'-0" X 10'-0"
B3	3'-4" X 1'-0" ROLL UP DOOR	12	10'-0" X 10'-0"
B6	6'-0" X 1'-0" ROLL UP DOOR	1	8'-0" X 10'-0"
B8	8'-0" X 1'-0" ROLL UP DOOR	138	10'-0" X 10'-0"
C1	LEFT HAND SWING 3'-4" X 1'-0" DOOR	4	5'-0" X 5'-0"
C3	3'-4" X 1'-0" ROLL UP DOOR	82	5'-0" X 5'-0"
D1	RIGHT HAND SWING 3'-4" X 1'-0" DOOR	3	5'-0" X 10'-0"
D2	LEFT HAND SWING 3'-4" X 1'-0" DOOR	4	5'-0" X 10'-0"
D3	3'-4" X 1'-0" ROLL UP DOOR	108	5'-0" X 10'-0"
E2	LEFT HAND SWING 3'-4" X 1'-0" DOOR	1	10'-0" X 1'-0"
E3	3'-4" X 1'-0" ROLL UP DOOR	5	1'-0" X 10'-0"
E8	8'-0" X 1'-0" ROLL UP DOOR	4	10'-0" X 1'-0"
F1	LEFT HAND SWING 3'-4" X 1'-0" DOOR - OFFSET DOOR AS SHOWN ON PLAN	1	5'-0" X 5'-0"
F2	LEFT HAND SWING 3'-4" X 1'-0" DOOR - OFFSET DOOR AS SHOWN ON PLAN	1	8'-0" X 5'-0"
F3	LEFT HAND SWING 3'-4" X 1'-0" DOOR - OFFSET DOOR AS SHOWN ON PLAN	2	10'-0" X 5'-0"
G3	3'-4" X 1'-0" ROLL UP DOOR	5	5'-0" X 8'-0"
H3	3'-4" X 1'-0" ROLL UP DOOR	1	10'-0" X 8'-0"
H8	8'-0" X 1'-0" ROLL UP DOOR	8	10'-0" X 8'-0"
J3	3'-4" X 1'-0" ROLL UP DOOR	1	10'-0" X 5'-0"
J8	8'-0" X 1'-0" ROLL UP DOOR	48	10'-0" X 5'-0"
L3	3'-4" X 1'-0" ROLL UP DOOR	6	5'-0" X 1'-0"
M3	3'-4" X 1'-0" ROLL UP DOOR	1	MOP COM ROOM SIZE VARIES
N3	3'-4" X 1'-0" ROLL UP DOOR	1	8'-0" X 8'-0"





**CONSTRUCTION & DESIGN**  
 1050 BROADWAY STREET, WRIGHTSTOWN, WI  
 Telephone: 920-336-3400 / Fax: 920-336-3401  
 WWW.ALLIANCEBUILDS.COM

---

**PROJECT INFO:**

11-005 - PROPOSED BUILDING REMODEL  
 UHAUL OF LES PAUL PKWY  
 SITE # 150013  
 925 HWY 164 S  
 WAUKESHA, WI 53186

---

**PROFESSIONAL SEAL(S)**

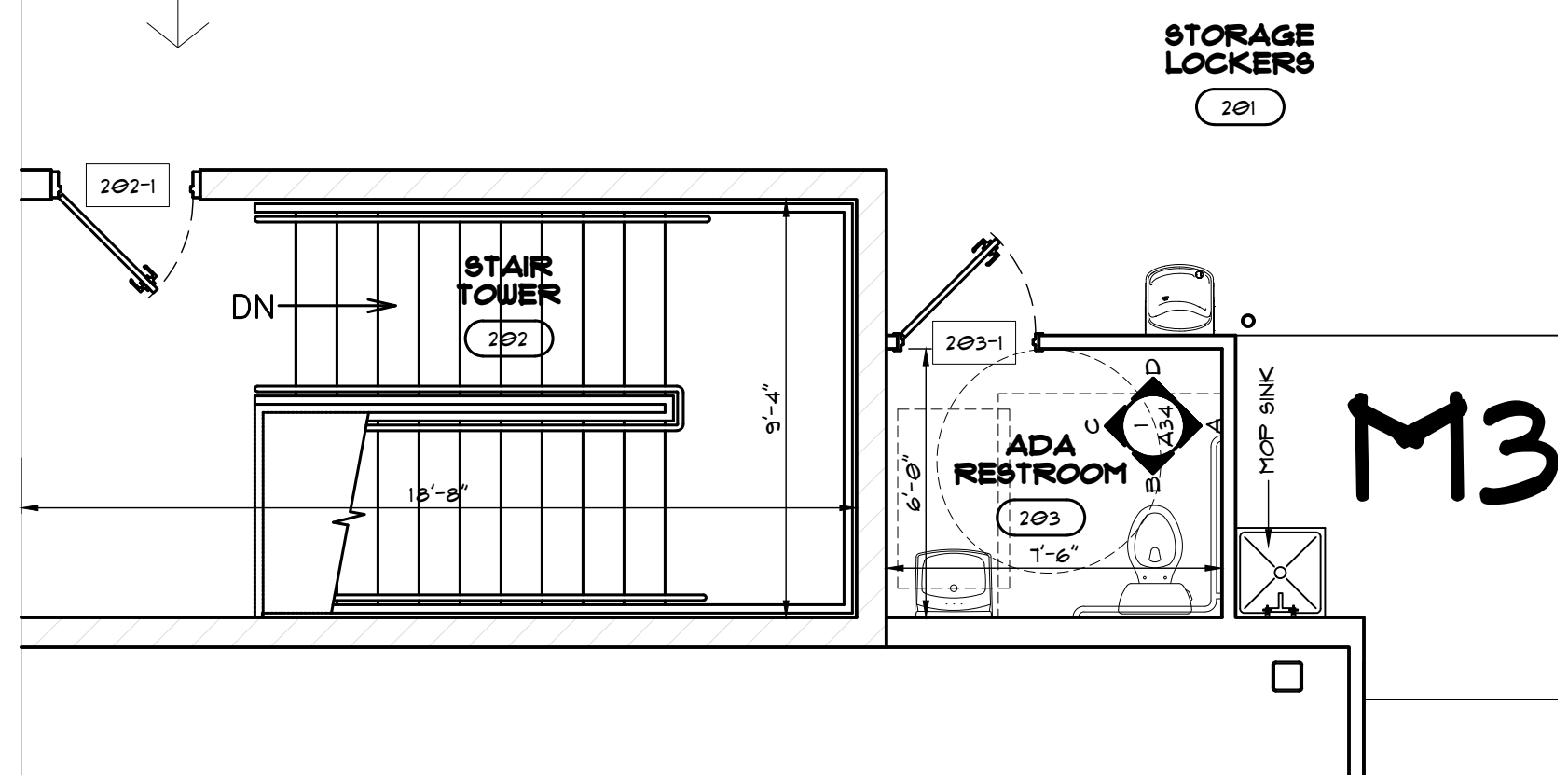
---

**REVISIONS**

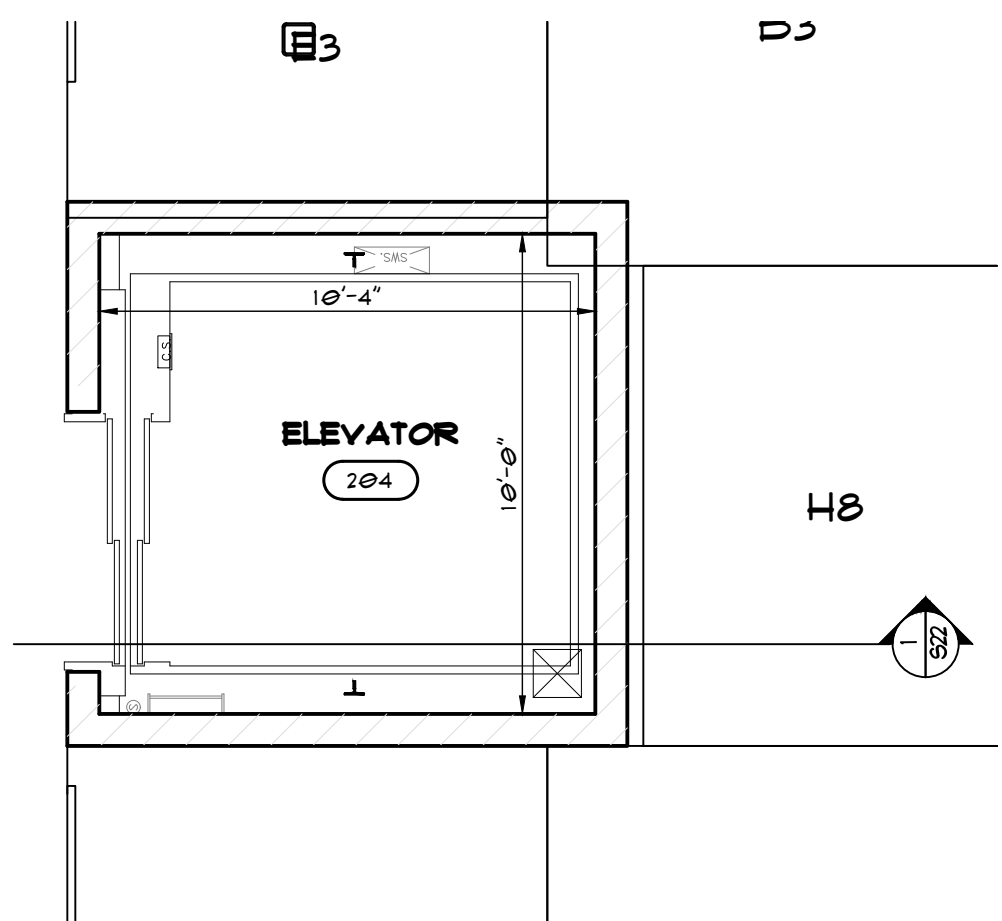
1	23-JAN-11	ISSUED FOR WINDOWS
2	02-JUN-11	ISSUED FOR BID
3	02-JUN-11	ISSUED FOR CONSTR.
4	18-JUN-11	ISSUED FOR CONSTR.
5	06-JUL-11	ISSUED FOR CONSTR.
6	12-JUL-11	ISSUED FOR SUBS
7	17-JUL-11	ISSUED FOR CONSTR.
8	26-JUL-11	MIRRORED DISPLAY LOCKERS
9	-	-
10	-	-
11	-	-
12	-	-
13	-	-

---

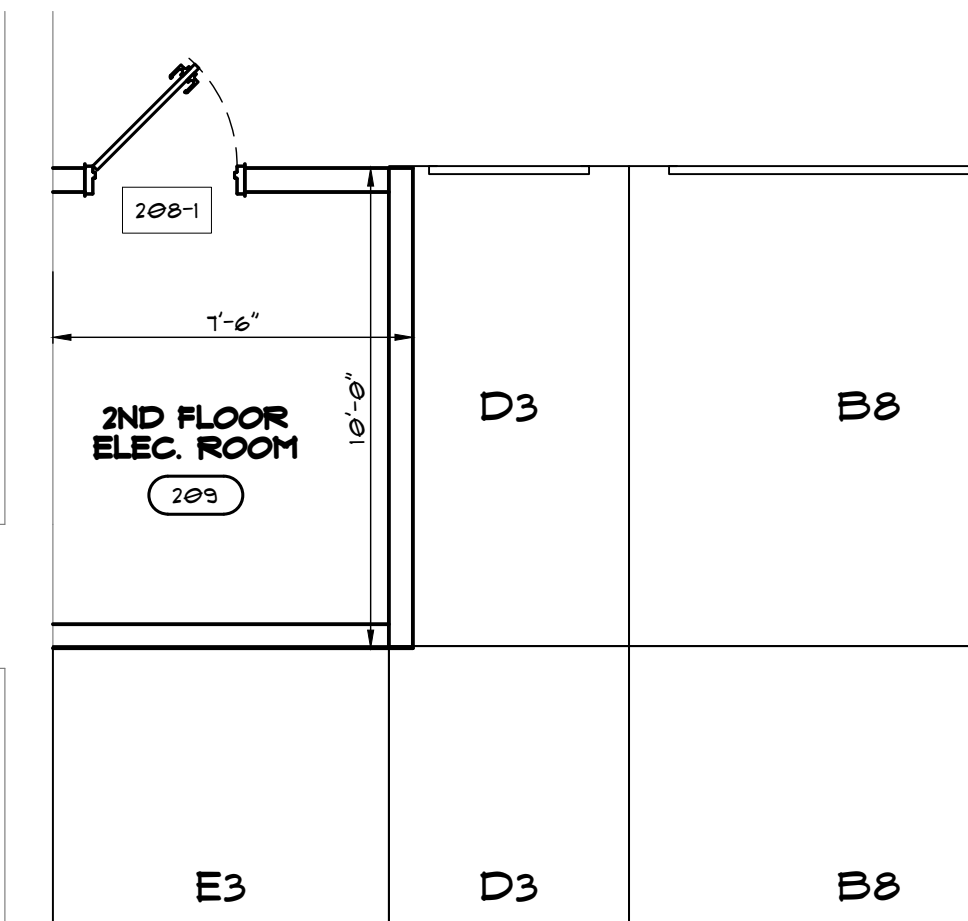
PLAN CURRENT AS OF: 08.14.11 @ 15:11  
 DATE: JANUARY 11TH, 2011  
 DRAWING NO: 11-005  
 TITLE: **FIRST FLOOR**  
 SHEET: **A10**



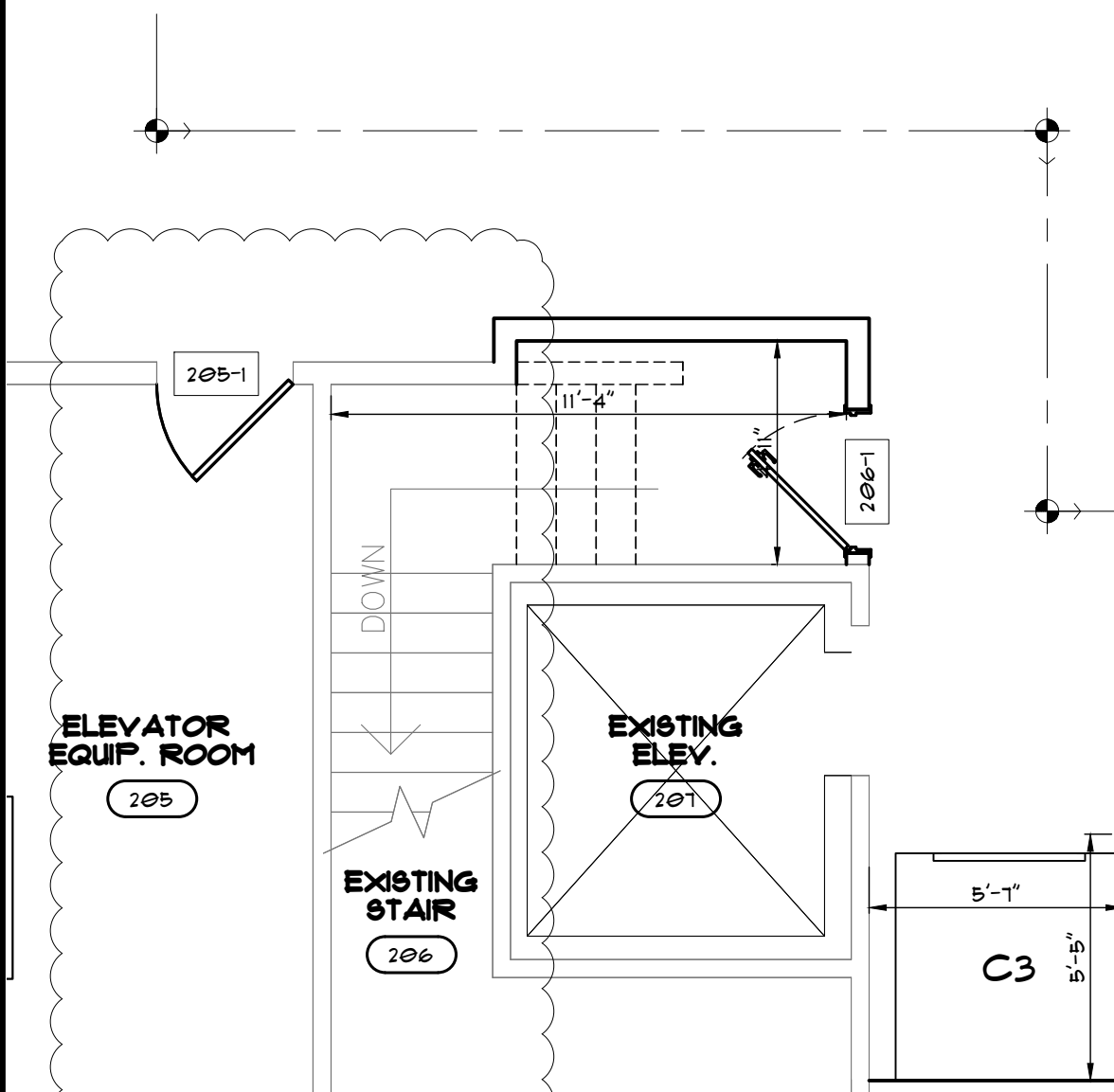
1 A20 ENLARGED FLOOR PLAN • SCALE: 1/4" = 1'-0"



2 A20 ENLARGED FLOOR PLAN • SCALE: 1/4" = 1'-0"



4 A20 ENLARGED FLOOR PLAN • SCALE: 1/4" = 1'-0"



3 A20 ENLARGED FLOOR PLAN • SCALE: 1/4" = 1'-0"

TOTAL: 415 LOCKER UNIT CALL OUTS			
UNIT MARK	DOOR TYPE	FLOOR QTY.	UNITS SIZE
A2	LEFT HAND SWING 3'-4" X 1'-0" DOOR	0	10'-0" X 15'-0"
A3	3'-4" X 1'-0" ROLL UP DOOR	0	10'-0" X 15'-0"
A8	8'-0" X 1'-0" ROLL UP DOOR	31	10'-0" X 15'-0"
B1	RIGHT HAND SWING 3'-4" X 1'-0" DOOR	0	10'-0" X 10'-0"
B2	LEFT HAND SWING 3'-4" X 1'-0" DOOR	0	10'-0" X 10'-0"
B3	3'-4" X 1'-0" ROLL UP DOOR	4	10'-0" X 10'-0"
B6	6'-0" X 1'-0" ROLL UP DOOR	1	8'-0" X 10'-0"
B8	8'-0" X 1'-0" ROLL UP DOOR	162	10'-0" X 10'-0"
C1	LEFT HAND SWING 3'-4" X 1'-0" DOOR	0	5'-0" X 5'-0"
C3	3'-4" X 1'-0" ROLL UP DOOR	13	5'-0" X 5'-0"
D1	RIGHT HAND SWING 3'-4" X 1'-0" DOOR	0	5'-0" X 10'-0"
D2	LEFT HAND SWING 3'-4" X 1'-0" DOOR	0	5'-0" X 10'-0"
D3	3'-4" X 1'-0" ROLL UP DOOR	150	5'-0" X 10'-0"
E2	LEFT HAND SWING 3'-4" X 1'-0" DOOR	0	10'-0" X 1'-0"
E3	3'-4" X 1'-0" ROLL UP DOOR	3	1'-0" X 10'-0"
E8	8'-0" X 1'-0" ROLL UP DOOR	5	10'-0" X 1'-0"
F1	LEFT HAND SWING 3'-4" X 1'-0" DOOR - OFFSET DOOR AS SHOWN ON PLAN	0	5'-0" X 5'-0"
F2	LEFT HAND SWING 3'-4" X 1'-0" DOOR - OFFSET DOOR AS SHOWN ON PLAN	0	8'-0" X 5'-0"
F3	LEFT HAND SWING 3'-4" X 1'-0" DOOR - OFFSET DOOR AS SHOWN ON PLAN	0	10'-0" X 5'-0"
G3	3'-4" X 1'-0" ROLL UP DOOR	4	5'-0" X 8'-0"
H3	3'-4" X 1'-0" ROLL UP DOOR	0	10'-0" X 8'-0"
H8	8'-0" X 1'-0" ROLL UP DOOR	8	10'-0" X 8'-0"
J3	3'-4" X 1'-0" ROLL UP DOOR	0	10'-0" X 5'-0"
J8	8'-0" X 1'-0" ROLL UP DOOR	30	10'-0" X 5'-0"
L3	3'-4" X 1'-0" ROLL UP DOOR	2	5'-0" X 1'-0"
M3	3'-4" X 1'-0" ROLL UP DOOR	1	MOP ROOM SIZE VARIES
N3	3'-4" X 1'-0" ROLL UP DOOR	1	8'-0" X 8'-0"

ADJUST LOCKER SIZES THIS AREA TO MAINTAIN 5'-0" CLEAR CORRIDOR TO FIT NEATLY AROUND ELEC. ROOM



ADJUST LOCKER WIDTH TO FIT THIS OPEN AREA

**\*\*ALL DIMENSIONS ARE TO FINISH FACE OF\*\*  
OUTSIDE OF LOCKERS**

SECOND FLOOR • SCALE: 1/16" = 1'-0"

**Alliance**  
CONSTRUCTION & DESIGN  
1050 BROADWAY STREET, WRIGHTSTOWN, WI  
Telephone: 920-336-3400 / Fax: 920-336-3401  
WWW.ALLIANCEBUILDS.COM

PROJECT INFO:

PROFESSIONAL SEAL(S)

11-005 - PROPOSED BUILDING REMODEL  
HAUL OF LES PAUL PKWY  
SITE #150013  
925 HWY 164 S  
WAUKESHA, WI 53186

REVISIONS

NO.	DATE	DESCRIPTION
1	23-JAN-11	ISSUED FOR WINDOWS
2	02JUN11	ISSUED FOR BID
3	02JUN11	ISSUED FOR CONSTR.
4	19JUN11	ISSUED FOR CONSTR.
5	06JUL11	ISSUED FOR CONSTR.
6	12-JUL-11	ISSUED FOR SUBS
7	11-JUL-11	ISSUED FOR CONSTR.
8	26-JUL-11	MIRRORED DISPLAY LOCKERS
9	-	-
10	-	-
11	-	-
12	-	-
13	-	-

PLAN CURRENT AS OF: 08.14.11 @ 15:18  
DATE: JANUARY 11TH, 2011  
DRAWING NO: 11-005

TITLE: **SECOND FLOOR**  
SHEET: **A20**