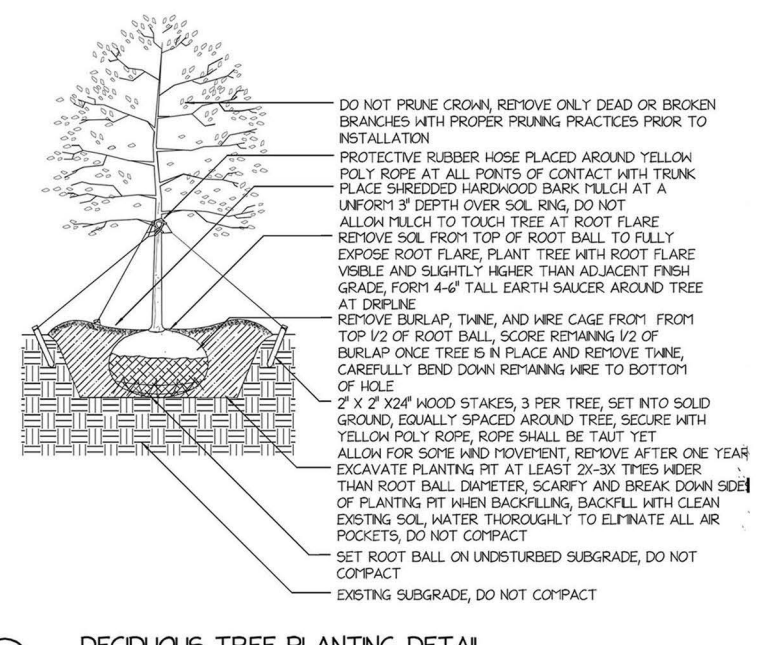
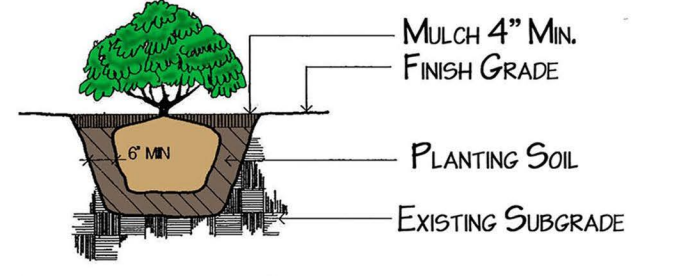
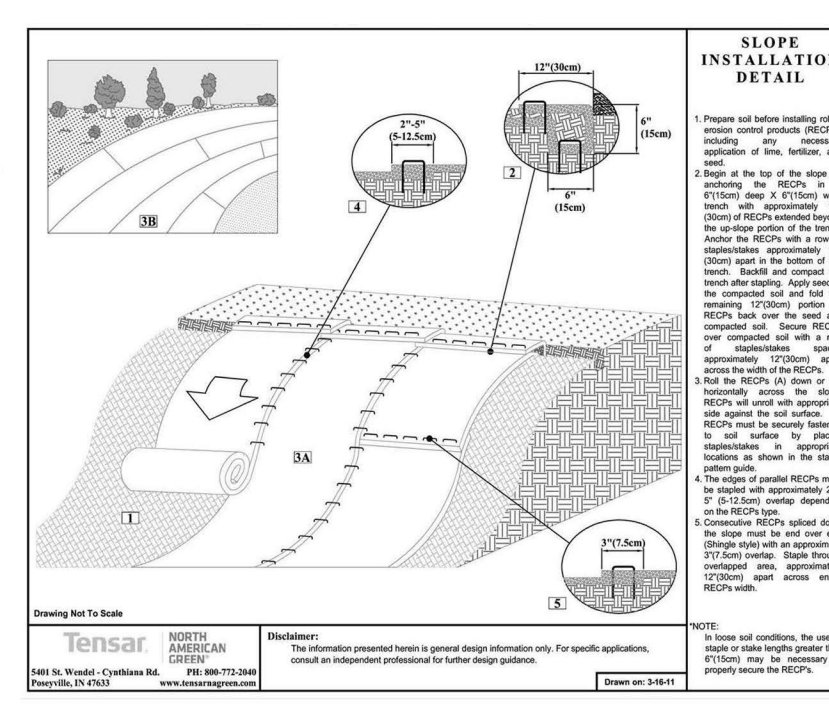
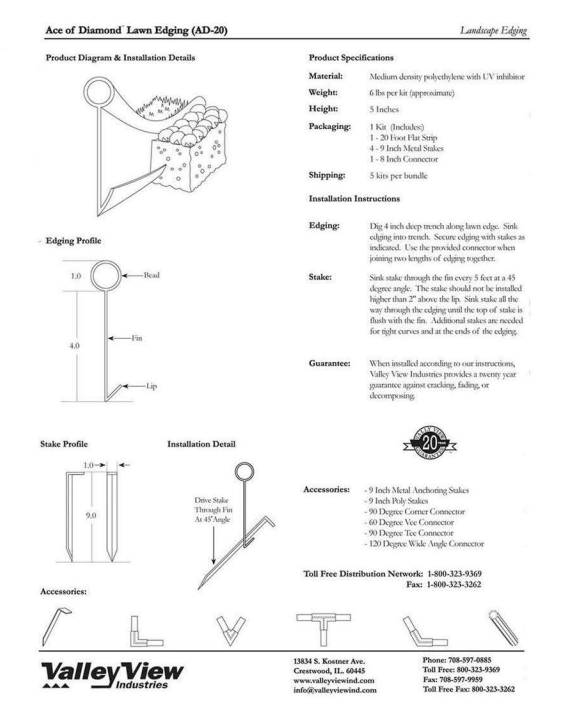


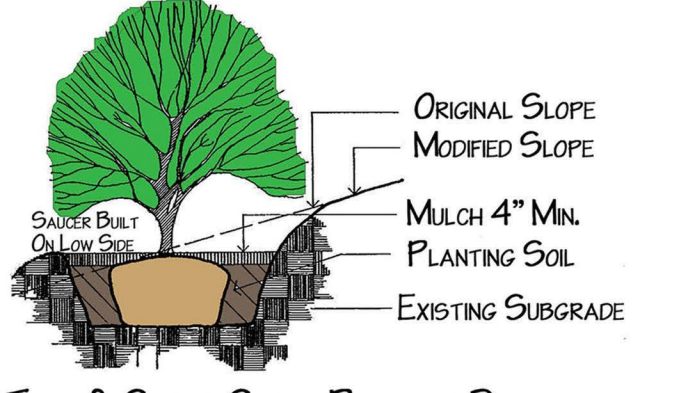
CONFEROUS TREE PLANTING DETAIL
TYPICAL INSTALLATION- NOT TO SCALE



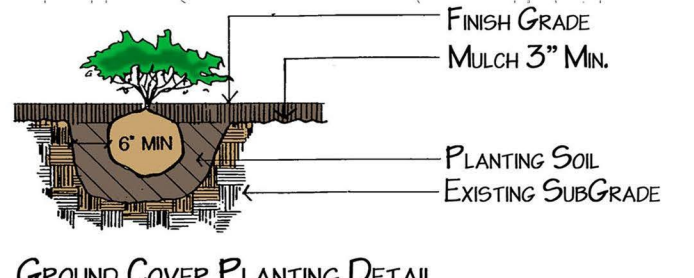
DECIDUOUS TREE PLANTING DETAIL
TYPICAL INSTALLATION- NOT TO SCALE



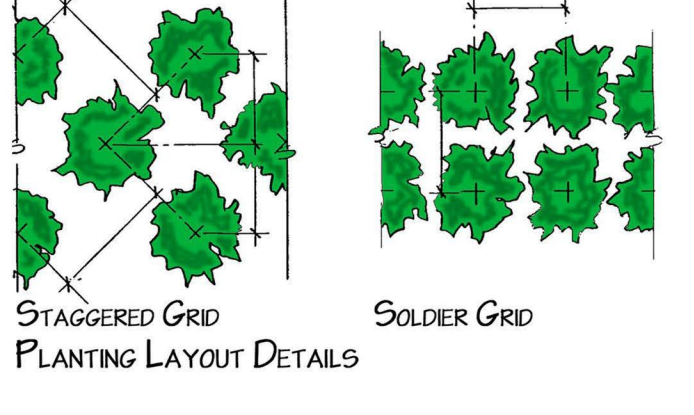
SHRUB PLANTING DETAIL



TREE & SHRUB SLOPE PLANTING DETAIL



GROUND COVER PLANTING DETAIL



STAGGERED GRID PLANTING LAYOUT DETAILS

APPROVED BY: _____ DATE: _____
DISCLAIMER: Information on this plan is deemed to be accurate, but is not guaranteed. "As Built" dimensions may vary slightly.

Qty	Botanical Name	Common Name	Size/Condition
Shrubs			
10	<i>Aronia melanocarpa</i> Morton'	ROQUOS BEAUTY BLACK BERRIED ARONIA	B-24'/cont.
2	<i>Dierilla lonicera</i>	BUSH HONEYSUCKLE	B-24'/cont.
3	<i>Juniperus virginiana</i> Grey Out	GREY OAK BURK EASTERN RED CEDAR	B-24'/cont.
4	<i>Juniperus x pfitzeriana</i> Kallay's Compact'	KALLAY'S COMPACT PFITZER JUNPER	B-24'/cont.
Perennials and Annuals			
8	<i>Hemerocallis x 'Swirling Water'</i>	SHRILING WATER DAYLILY	#1 cont.
8	<i>Iris germanica</i>	TALL BEARDED IRIS	#1 cont.
20	<i>Napeta x faassenii</i> Walkers Low'	WALKERS LOW CAT'N'T	#1 cont.
6	<i>Penstemon digitalis</i> Husker Red	HUSKER RED PENSTEMON	#1 cont.
6	<i>Perovskia atriplicata</i> Little Spire'	LITTLE SPIRE RUSSIAN SAGE	#1 cont.

PLANTING NOTES:
 1) CONTRACTOR SHALL VERIFY LOCATION OF ALL ON-SITE UTILITIES PRIOR TO COMMENCING ANY WORK ON-SITE. WI STATE STATUTE 182.0175 REQUIRES THREE WORK DAYS NOTICE BEFORE YOU EXCAVATE. CALL Digger's Hotline at 1-800-242-8511.
 2) SUPPLY AND INSTALL ALL WISCONSIN GROWN NURSERY STOCK. GUARANTEE ALL STOCK FOR A PERIOD OF ONE YEAR. ALL PLANTING MATERIAL IS TO MEET AMERICAN STANDARDS FOR NURSERY STOCK ANSI Z60.1-2004. ALL PLANT MATERIAL IS TO BE PLANTED IMMEDIATELY AFTER ARRIVAL AND UNLOADING ON SITE. PLANT TYPES, SIZES, AND QUANTITIES ARE ACCORDING TO THE PROPOSED PLANS. IF ANY DISCREPANCIES ARE PRESENT BETWEEN PLANT LEGEND AND GRAPHIC DEPICTION, GRAPHICALLY DEPICTED QUANTITIES SHALL HOLD PRECEDENCE.
 3) ACTUAL LOCATIONS OF PLANT MATERIAL ARE SUBJECT TO FINAL SITE LAYOUT AND CONDITIONS AND MAY BE ADJUSTED ACCORDINGLY.
 4) GUY AND STAKE ALL LARGE TREES AND EVERGREENS.
 5) ALL PLANTS ARE TO BE BACKFILLED WITH A 50/50 MIX OF PLANT STARTER AND TOPSOIL BLEND AND IS TO BE FREE OF ROOTS, ROCKS LARGER THAN 1" IN DIAMETER, SUBSOIL DEBRIS, AND WEEDS.
 6) OPEN AND REMOVE THE TOP BURLAP AND TWINE OR STRING FROM ALL BALLED AND BURLAPPED PLANTS AND SET ALL PLANTS AT FINISHED GRADE.
 7) SUPPLY AND INSTALL 3-4" OF SHREDDED HARDWOOD BARK MULCH IN ALL PLANTING BEDS, AND 1-1 1/2" IN ALL PERENNIAL BEDS. TREAT ALL AREAS WITH A PRE-EMERGENT HERBICIDE (GRANULAR FORM) 'TREFLAN' OR APPROVED EQUAL FOLLOWING ALL MANUFACTURER'S WRITTEN INSTALLATION INSTRUCTIONS PRIOR TO PLACING MULCH.
 8) SUPPLY AND INSTALL 3-4" OF SHREDDED HARDWOOD MULCH 1' PAST THE DRIP LINE OF ALL INDIVIDUAL TREES. DO NOT PLACE MULCH AGAINST TRUNK OF TREE.
 9) SUPPLY AND INSTALL BLACK VINYL EDGING 'ACE OF DIAMOND' MANUFACTURED BY VALLEYVIEW INDUSTRIES OR APPROVED EQUAL IN ALL PLANTING BEDS THAT ADJOIN TURF AREAS ACCORDING TO THE MANUFACTURER'S WRITTEN INSTALLATION INSTRUCTIONS.
 10) ALL TURF AREAS ARE TO BE FINE-GRADED. ALL TURF AREAS ARE TO BE SEEDED, AREAS ARE TO BE SOWN AT THE MANUFACTURER'S RECOMMENDED RATES AND COVERED WITH A CLEAN OAT STRAW. TURF AREAS ARE TO BE SOWN WITH NELSON LANDSCAPE'S CUSTOM BLENDED SEED FOR LAWNS AND IS TO BE APPLIED AT THE RECOMMENDED RATE, A STARTER FERTILIZER APPLIED, AND COVERED WITH A CLEAN OAT STRAW. ANY AREAS WHERE POTENTIAL EROSION EXISTS DUE TO WIND OR WATER OR OTHER MEANS INCLUDING ALL SLOPES OF 3:1 OR GREATER SHALL BE COVERED WITH STRAW EROSION CONTROL BLANKETS 'DS-75' MANUFACTURED BY NORTH AMERICAN GREEN, INSTALLED TO MANUFACTURER'S WRITTEN INSTALLATION INSTRUCTIONS.



DIGGERS' HOTLINE
 14 STATE STATUTE 182.0175 REQUIRES
 THREE WORK DAYS NOTICE BEFORE YOU EXCAVATE
 CALL DIGGER'S HOTLINE 1-800-242-8511



Post Office Box 823
 Waukesha, WI 53187-0823
 262-549-6111
 262-549-9229
 www.nelsonlandscape.com

Copyright © 2016.
 Nelson Landscape Incorporated
 This landscape design plan is the sole property of Nelson Landscape Incorporated and may not be reproduced, altered, or copied in any manner or form without the permission of Nelson Landscape Incorporated. This plan may not be used for bidding purposes without prior consent by Nelson Landscape Incorporated.

This plan is subject to final on-site conditions and may be modified to account for unforeseen obstacles, other changes, or site modifications that were not made known at the time of preparation dated on this plan.

Rev	Date	Description	By

GERALD NELL INC.
 W229 N1680 WESTWOOD DRIVE
 WAUKESHA, WI 53186-1152
 262-521-3750

H.A.W.S.
 701 NORTHVIEW ROAD
 WAUKESHA, WISCONSIN

Drawn By
Date
05-09-16
Scale
1" = 30'-0"
Job Number
Sheet Name
LANDSCAPE PLAN
Sheet Number
L1.1
SHEET OF TOTAL SHEETS

COPYRIGHT GERALD NELL INC., 2016. ALL RIGHTS RESERVED. THIS DRAWING IS NOT TO BE REPRODUCED, CHANGED, COPIED, DISSEMINATED OR ASSIGNED TO ANY PARTY IN ANY FORM OR MANNER WITHOUT FIRST OBTAINING THE WRITTEN PERMISSION OF GERALD NELL INC. THE CLIENT AGREES TO INDEMNIFY AND HOLD GERALD NELL INC. HARMLESS FROM ANY DAMAGES, LIABILITY, OR COST, INCLUDING ATTORNEY'S FEES AND COSTS OF DEFENSE ARISING FROM ANY CHANGES OR ALTERATIONS MADE BY ANYONE OTHER THAN GERALD NELL INC. OR FROM ANY EDGE OF THE DRAWINGS OR DATA WITHOUT THE PRIOR WRITTEN CONSENT OF GERALD NELL INC.