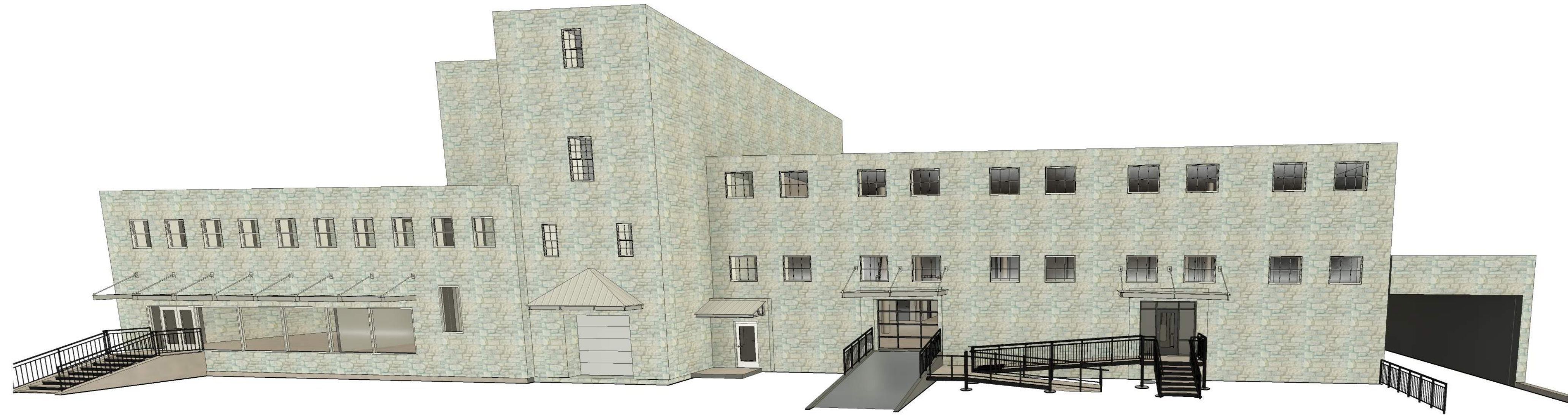


# Exterior Awnings & ADA Ramp

212 E. North Street  
Waukesha, WI  
Plan Commission



ALL DRAWINGS AND WRITTEN MATERIAL APPEARING HEREIN CONSTITUTE ORIGINAL AND UNPUBLISHED WORK OF THE DESIGN PROFESSIONAL AND MAY NOT BE DUPLICATED, USED OR DISCLOSED WITHOUT WRITTEN CONSENT OF STRUCRITE, INC.

## Exterior Awnings & ADA Ramp

212 E. North Street  
Waukesha, WI

DESIGNER/  
SUPERVISING PROFESSIONAL

StrucRite, Inc.  
Boyd E. Coleman, P.E.  
President, Engineer  
707 N. Grand Ave. Suite 102  
Waukesha, WI 53186  
262.549.3222

### OWNER

ADH Properties  
Alan Huelman  
235 W. Broadway St.  
Waukesha, WI

### ABBREVIATIONS

AC AIR CONDITIONING	FGL FIBERGLASS	PREFAB PREFABRICATED
ACS ACCESS PANEL	FHC FIRE HOSE CABINET	PRELIM PRELIMINARY
ACT ACUSTICAL CEILING TILE	FN FINISH	PRKG PARKING
ADDM ADDENDUM	FXT FIXTURE	PSF POUNDS PER SQUARE FOOT
ADJ ADJUSTABLE	FL FLOOR LINE	PT PAINT
ADO AUTOMATIC DOOR OPERATOR	FLR FLOOR	PTD PAPER TOWEL DISPENSER
AFD ABOVE FINISH FLOOR	FLUR FLUORESCENT	PTRD PAPER TOWEL DISPENSER WITH RECEPTACLE
ATL ALTERNATE	FO_ FACE OF (ITEM)	PTM PAINT TO MATCH
ALUM ALUMINIUM	FOF FACE OF FINISH	QT QUARRY TILE
ANOD ANODIZED	FOM FACE OF MASONRY	R RADIUS
APPROX APPROXIMATE	FP FIRE PROOF, FIRE PROTECTION	R RISER
ARCH ARCHITECT	FR FRAME	RA RETURN AIR
AUX AUXILIARY	FT FOOT OR FEET	RD ROOF DRAIN
AVG AVERAGE	FTG FOOTING	REF REFLECTOR
	FLRG FURRING	REFL REFLECTED
	FLRV FIELD VERIFY	REIN REINFORCED
BD BOARD	GA GAGE	REQD REQUIRED
BITUM BITUMINOUS	GAL GALVANIZED	REV REVISION
BLKG BLOCKING	GB GRAB BAR	RFI REQUEST FOR INFORMATION
BLKHD BULKHEAD	GC GENERAL CONTRACTOR	RM ROOM
BM BEAM	GL GLASS	RO ROUGH OPENING
BO_ BOTTOM OF (ITEM)	GYP BD GYPSUM BOARD	ROF RIGHT OF WAY
BO BY OTHERS		RTU ROOF TOP UNIT
BS BOTH SIDES		
BT_JNT BUTT JOINT	HB HOSE BIB	SAB SOUND ATTENUATION BATTS
BTWN BETWEEN	HDW HARDWARE	SAG SUPPLY AIR GRILL
	HDWD HARDWOOD	SC SOLID CORE
CAS CARD ACCESS SYSTEM	HM HOLLOW METAL	SCHED SCHEDULE
CB CATCH BASIN	HORZ HORIZONTAL	SD SOAP DISPENSER
CFCI CONTRACTOR	HP HORSE POWER	SECT SECTION
	HR HOUR	SHR SHOWER
	HTR HEATER	SHT SHEET
CG CORNER GUARD	HVAC HEATING, VENTILATION & AIR CONDITIONING	SHT MTL SHEET METAL
CH COAT HOOK		SHV SHELF SHELVING
CJ CONTROL JOINT	ID INSIDE DIAMETER	SIM SIMILAR
CL CENTER LINE	IN INCH	S&P SHELF & POLE
CLG CEILING	INCL INCLUDE, INCLUDING	SPEC SPECIFICATION
CLO CLOSET	INT INTERIOR	SPKR SPEAKER
CLR CLEAR		SQ SQUARE
CMU CONCRETE MASONRY UNIT	JAN JANITOR	SS SOLID SURFACE
CO CASED OPENING	JNT JOINT	SSK SERVICE SINK
COL COLUMN		STC SOUND TRANSMISSION COEFFICIENT
CONC CONCRETE	KO KNOCK OUT	STD STANDARD
CONT CONTINUE, CONTINUOUS	KS KNEE SPACE	STL STEEL
CORR CORRIDOR		STOR STORAGE
CPT CARPET	L LENGTH LONG	STRUC STRUCTURAL
CRS COURSE, COURSES	LAV LAVATORY	SUSP SUSPENDED
CT CERAMIC TILE	LBS POUND(S)	
CTR CENTER	LKR LOCKER	T TREAD
CUH CABINET UNIT HEATER	LT WT LIGHT WEIGHT	TEMP TEMPORARY
		T&G TONGUE & GROOVE
DBL DOUBLE	MASONRY MASONRY	THK THICKNESS
DEFS ERECT APPLIED EXTERIOR FINISH SYSTEM	MAT MATERIAL	TLT TOILET
DEMO DEMOLITION	MAX MAXIMUM	TO TO OF (ITEM)
DEP DEPRESSED	MECH MECHANICAL	TOC TOP OF CONCRETE
DF DRINKING FOUNTAIN	MED MEDIUM	TOF TOP OF FOOTING
DIA DIAMETER	MFR MANUFACTURER	TOP TOP OF PAVEMENT
DIAG DIAGONAL	MH MANHOLE	TOS TOP OF STEEL
DIM DIMENSION	HD HD	TOW TOP OF WALL
DISP DISPENSER	MIN MINIMUM	TPD TOILET PAPER DISPENSER
DIV DIVISION	MIRR MIRROR	TYP TYPICAL
DN DOWN	MISC MISCELLANEOUS	
DR_PNGDR OR OPENING	MO MASONRY OPENING	UCR UNDERCOUNTER REFRIGERATOR
DS DOWNSPOUT	MSB MOP SERVICE BASIN	UL UNDERWRITERS LABORATORY
DT DRAIN TILE	MTD MOUNTED	UNO UNLESS NOTED OTHERWISE
DW DISHWASHER	MTL METAL	UR URINAL
DWG DRAWING		VAV VARIABLE AIR VOLUME
DWR DRAWER	NIC NOT IN CONTRACT	VB VAPOR BARRIER
EA EACH	NOM NOMINAL	VCT VINYL COMPOSITE TILE
EIFS EXTERIOR INSULATION FINISH SYSTEM	NTS NOT TO SCALE	VERT VERTICAL
		VEST VESTIBULE
EJ EXPANSION JOINT	OV OVER	VIF VERIFY IN FIELD
EL ELEVATION	OVERALL OVERALL	VR VAPOR RETARDER
ELEC ELECTRICAL/ELECTRICAL	OC ON CENTER	VWC VINYL WALL COVERING
ELEV ELEVATOR	OD OUTSIDE DIAMETER	
EMER EMERGENCY	OFICI OWNER FURNISHED/ CONTRACTOR INSTALLED	w WITH
EP ELECTRICAL PANEL	OFD OVERFLOW DRAIN	wc WATERCLOSET
EQ EQUAL	OH OVERHEAD	wd WOOD
EQU EQUIPMENT	OPNG OPENING	wf WIDE FLANGE
ES ELECTRIC STRIKE	OPP OPPOSITE	wh WATER HEATER
ETR EXISTING TO REMAIN	PED PEDESTAL	wid WITOUT
EWC ELECTRIC WATER COOLER	PERIM PERIMETER	ws WORKSTATION
EXH FN EXHAUST FAN	PL PLATE	WWF WELDED WIRE FABRIC
EXIST EXISTING	PL PL PROPERTY LINE	WWM WEDED WIRE MESH
EXP EXPANSION	PLAM PLASTIC LAMINATE	YD YARD(S)
EXPO EXPOSED	PLBG PLUMBING	
EXT EXTERIOR	PLYWD PLYWOOD	
	PML_JNT PANEL JOINT	
FA FIRE ALARM	POC POINT OF CONNECTION	
FD FLOOR DRAIN	PR PAIR	
FE FIRE EXTINGUISHER		
FEC FIRE EXTINGUISHER CABINET		
FF FINISH FACE		

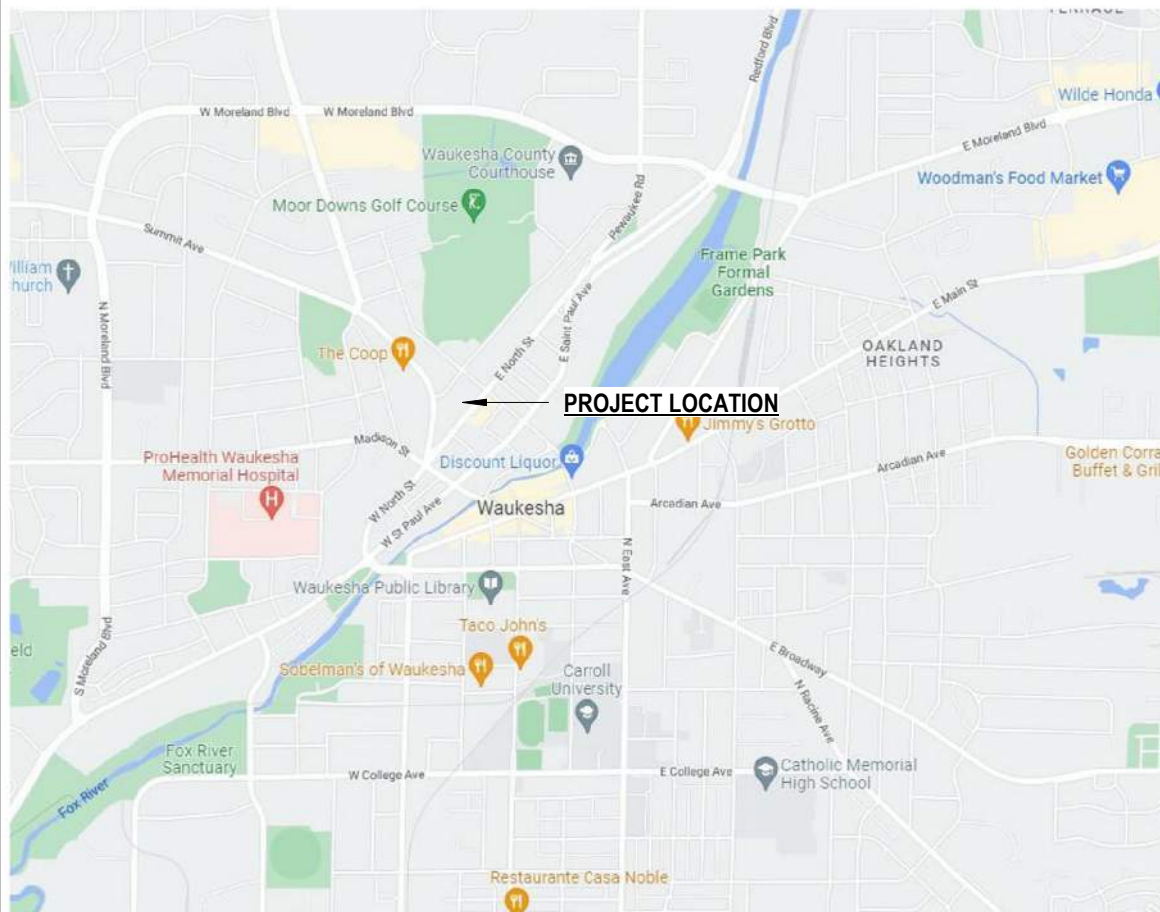
### SYMBOLS LEGEND

	DOOR TAG
	WINDOW TAG
	WALL TAG
	PROJECT KEYED NOTE
	EMERGENCY EXIT SIGN
	FIRE EXTINGUISHER
	EXISTING CONSTRUCTION
	NEW CONSTRUCTION
	DIMENSION SHOWING FINISH TO FINISH
	DIMENSION SHOWING STUD TO STUD

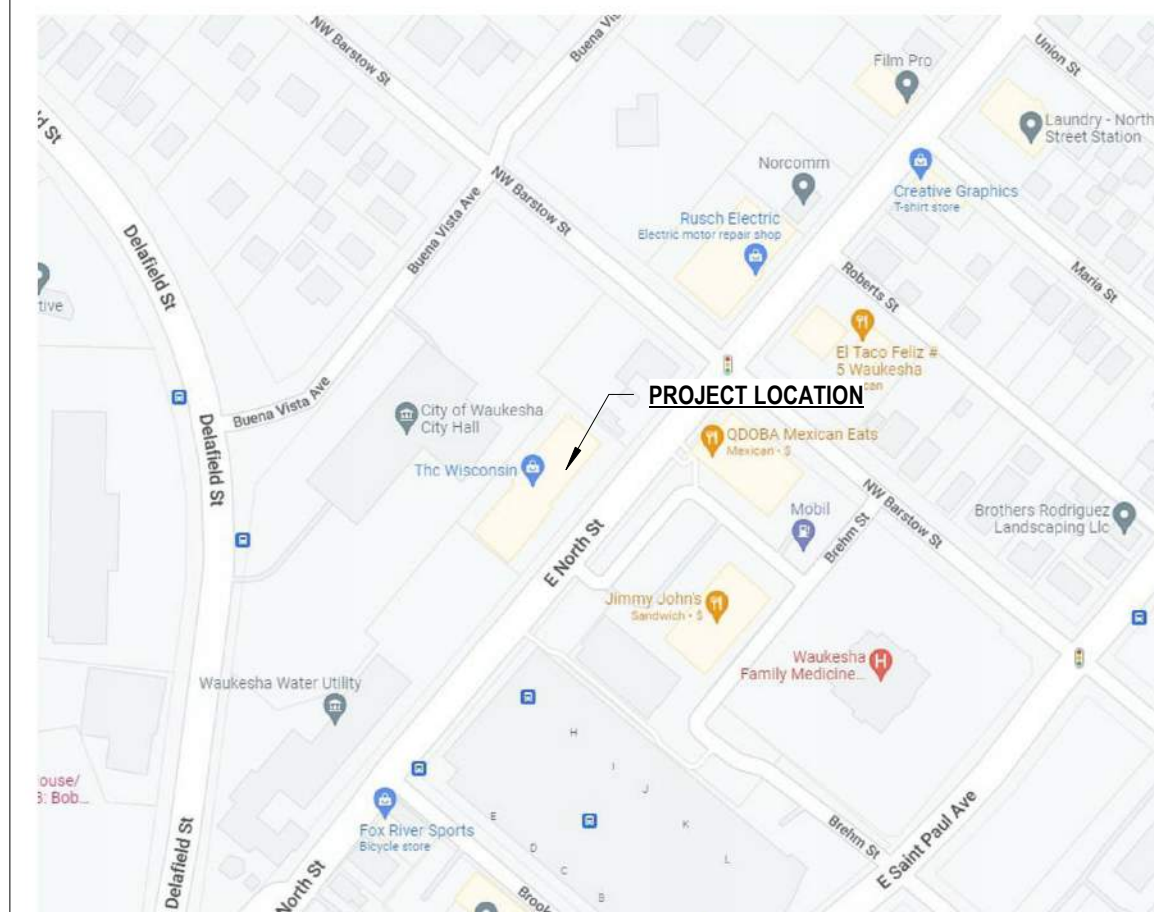
### GENERAL NOTES

- ALL WORK SHALL COMPLY WITH ALL LOCAL, STATE & NATIONAL CODES HAVING JURISDICTION OVER THIS PROJECT.
- ALL WORK SHALL BE DONE IN ACCORDANCE WITH BUILDING REGULATIONS AND IN A QUALITY WORKMANSHIP MANNER.
- DO NOT SCALE DRAWINGS.
- SEE GENERAL CONDITIONS OF THE CONTRACT FOR FULL SCOPE OF PROJECT.
- UNLESS NOTED OTHERWISE, ALL DETAILS, SECTION AND NOTES ON THE DRAWINGS ARE INTENDED TO BE TYPICAL FOR SIMILAR SITUATIONS ELSEWHERE.
- THE PLANS AND SPECIFICATIONS ARE INTENDED TO GIVE A DESCRIPTION OF THE WORK. NO DEVIATION FROM THE PLANS AND SPECIFICATIONS SHALL BE MADE WITHOUT THE WRITTEN CONSENT OF STRUCRITE, INC.
- ANY DISCREPANCIES WITHIN THE CONTRACT DOCUMENTS SHALL BE BROUGHT TO THE ATTENTION OF STRUCRITE, INC. IN WRITING.
- THE TERMS "NOT IN CONTRACT" OR "BY OWNER" OR "BY OTHERS" DO NOT PRECLUDE OTHER WORK ASSOCIATED WITH THE CONTRACT WHICH MUST OCCUR IN THE VICINITY OF THE AREA OR THROUGH THE SPACE.
- BEFORE COMMENCING WORK, THE CONTRACTOR SHALL VERIFY ALL DIMENSIONS AND CONDITIONS IN THE FIELD. ANY DISCREPANCIES BETWEEN EXISTING CONDITIONS AND THE CONSTRUCTION DOCUMENTS SHALL BE BROUGHT TO THE ATTENTION OF STRUCRITE, INC PRIOR TO BIDDING.
- IF FIELD CONDITIONS NECESSITATE ANY CHANGES OR MODIFICATIONS, THE CHANGES OR MODIFICATIONS MUST BE APPROVED BY STRUCRITE, INC. PRIOR TO PROCEEDING WITH WORK.
- ALL CHANGE ORDERS MUST BE APPROVED BY THE OWNER PRIOR TO PROCEEDING WITH ANY WORK. FAILURE TO FOLLOW THIS STEP MIGHT RESULT IN NON-PAYMENT.
- THE GENERAL CONTRACTOR SHALL BE RESPONSIBLE FOR FINAL CLEAN-UP.
- GENERAL AND SUB CONTRACTS SHALL EXERCISE ALL REASONABLE PRECAUTIONS FOR THE PROTECTION OF PERSONS AND PROPERTY ON THE SITE. ALL SAFETY PROVISIONS AND APPLICABLE LAWS FOR BUILDING AND CONSTRUCTION CODES SHALL BE OBSERVED.
- GENERAL CONTRACTOR SHALL SUBMIT SHOP DRAWINGS TO STRUCRITE INC. FOR APPROVAL BEFORE PROCEEDING WITH ANY FABRICATION OR INSTALLATION.
- MANUFACTURERS DIRECTIONS FOR APPLICATION, INSTALLATION AND METHODS SHALL BE FOLLOWED ARE HEREWITH MADE PART OF THE CONSTRUCTION DOCUMENTS.
- ALL WOOD IN CONTACT WITH CONCRETE OR MASONRY TO BE PRESSURE TREATED

### LOCATION MAP



### VICINITY MAP



### SHEET INDEX

- 1-GENERAL
- G1.0 COVER PAGE
- 3-ARCHITECTURAL
- A1.2 SITE PLAN & ELEVATIONS
- A2.0 COLORED ELEVATIONS

### REVISIONS

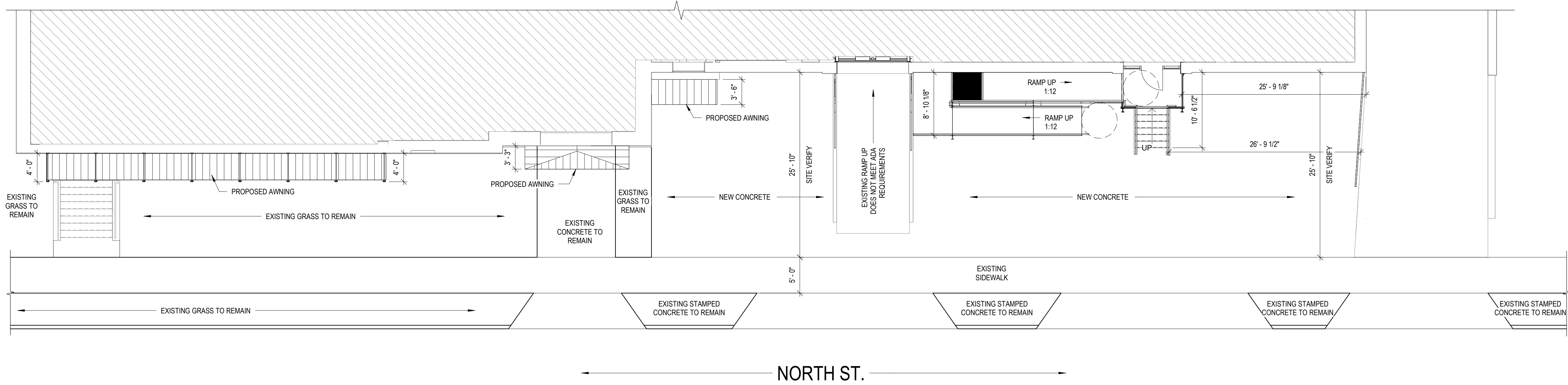
No.	DATE	DESCRIPTION
-----	------	-------------

### Plan Commission

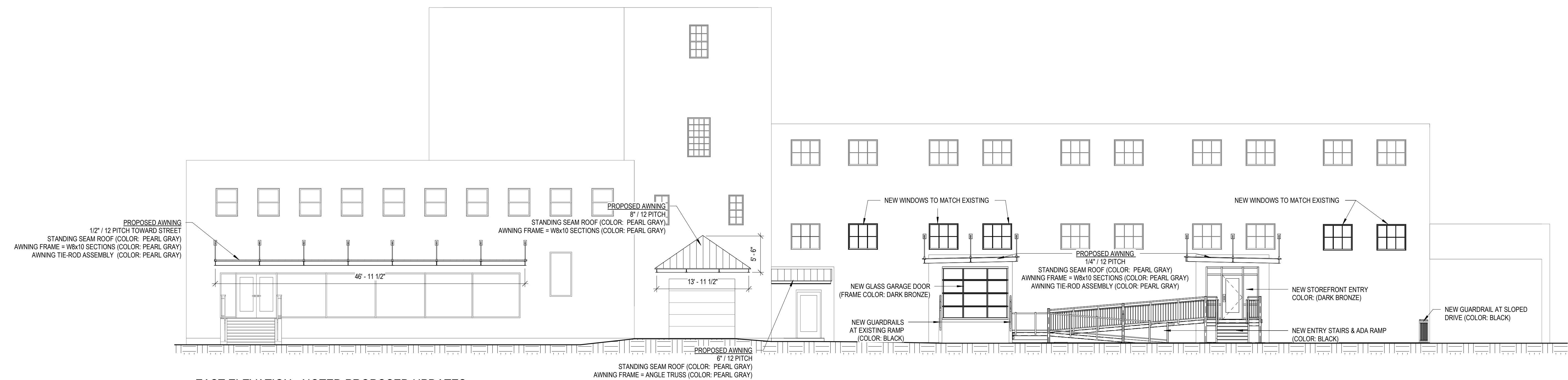
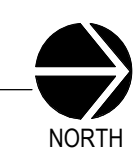
SHEET TITLE:	COVER PAGE
JOB NUMBER:	22181
ISSUED DATE:	04.24.2023
DRAWN BY:	JJR
SHEET NUMBER:	G1.0

**G1.0**

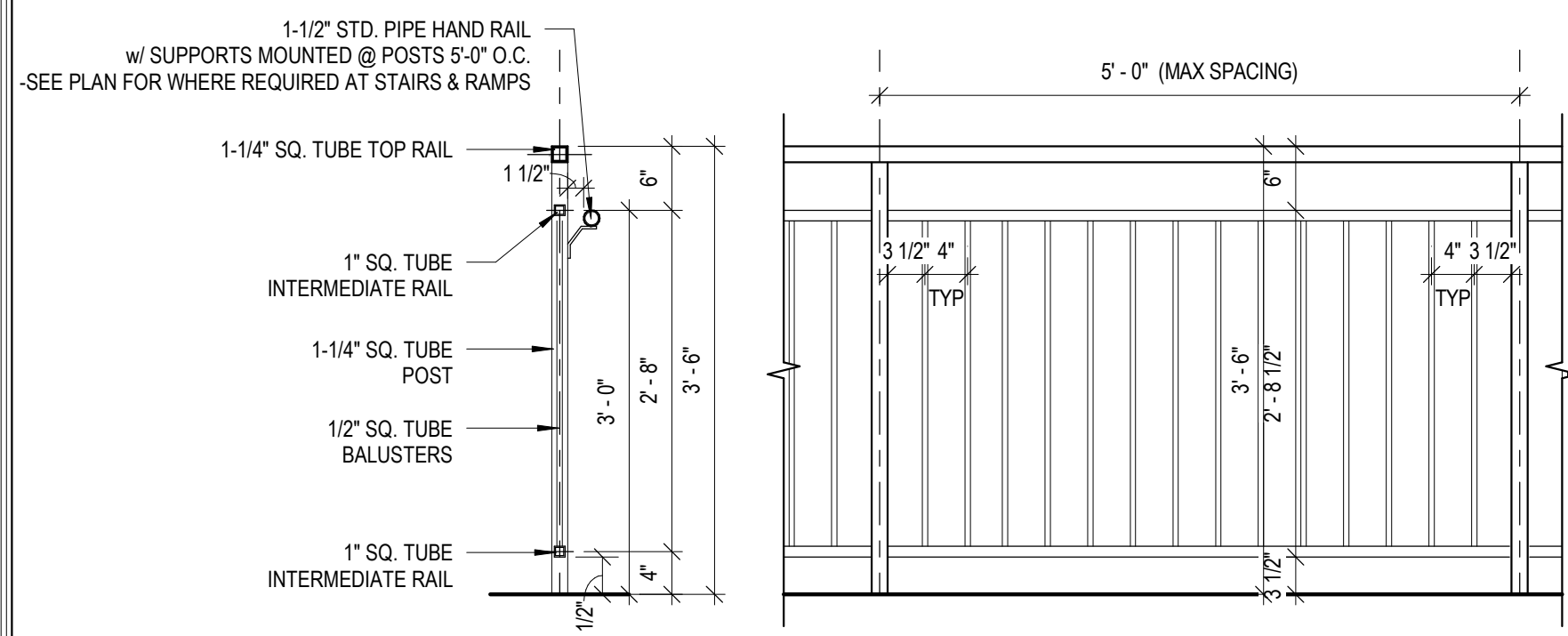
**Exterior Awnings & ADA Ramp**  
212 E. North Street  
Waukesha, WI



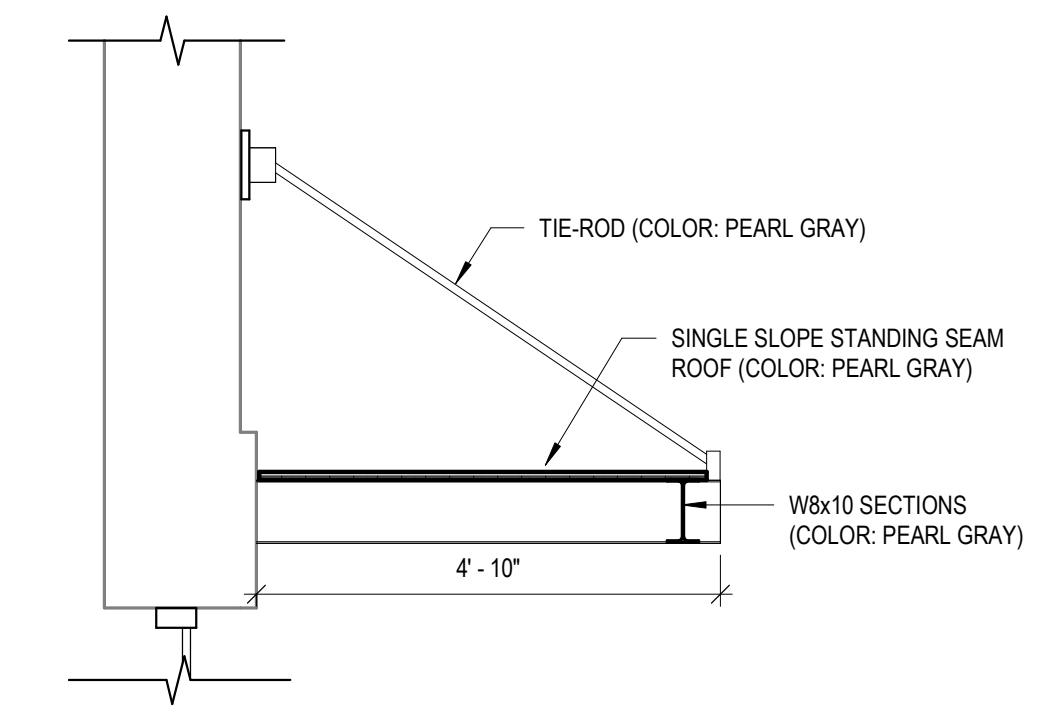
1 LOCAL SITE PLAN @ NORTH ST.  
1/8" = 1'-0"



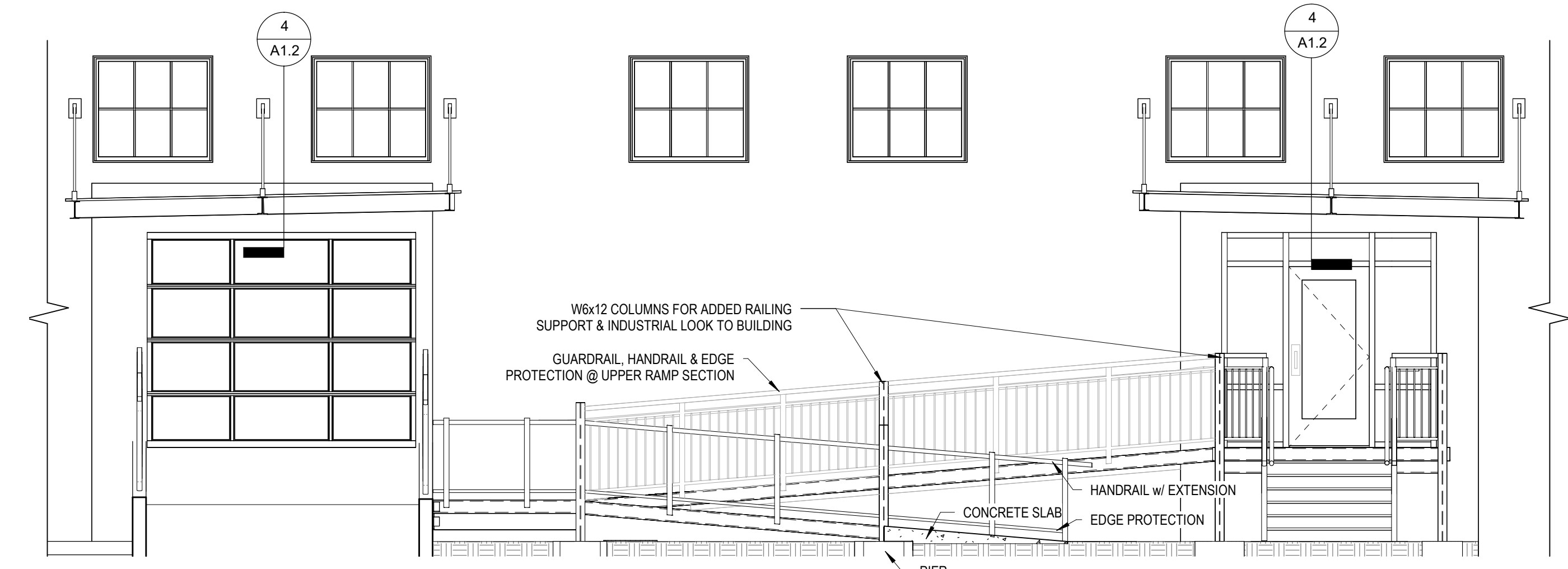
2 EAST ELEVATION - NOTED PROPOSED UPDATES  
1/8" = 1'-0"



5 TYP. GUARDRAIL w/ HANDRAIL  
3/4" = 1'-0"



4 SINGLE SLOPED AWNING  
1/2" = 1'-0"



3 ENLARGED RAMP ELEVATION  
1/4" = 1'-0"

REVISIONS		
No.	DATE	DESCRIPTION

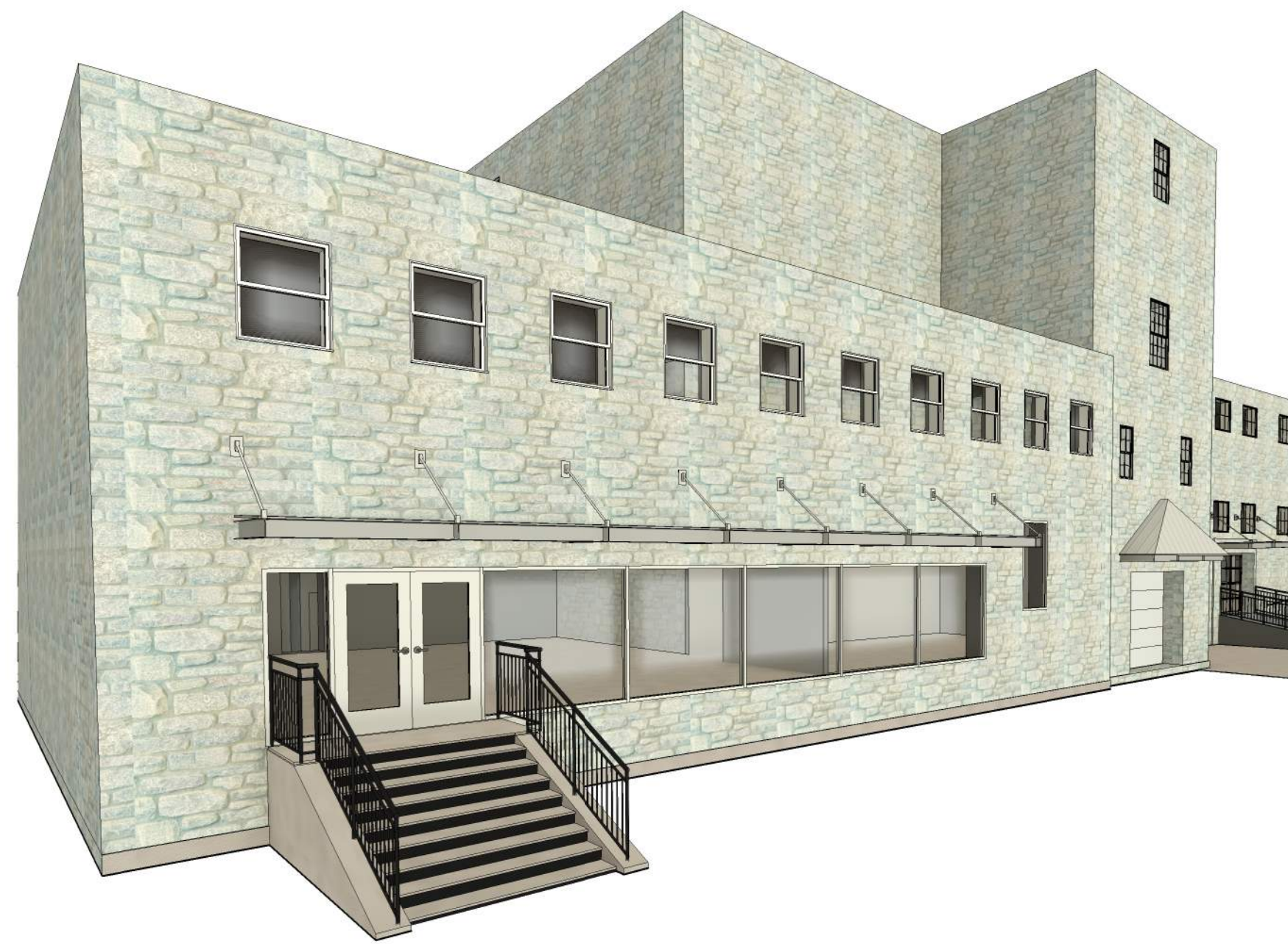
Plan Commission	
SHEET TITLE:	SITE PLAN & ELEVATIONS
JOB NUMBER:	22181
ISSUED DATE:	04.24.2023
DRAWN BY:	JJR
SHEET NUMBER:	A1.2

**A1.2**

4/24/2023 3:40:00 PM



1 EAST ELEVATION  
 1/8" = 1'-0"



2 PROPOSED AWNING - SOUTH EAST ENTRANCE



3 PROPOSED STAIR & ADA RAMP



4 OVERALL PERSPECTIVE VIEW

**Exterior Awnings & ADA Ramp**

212 E. North Street  
 Waukesha, WI

**REVISIONS**

No.	DATE	DESCRIPTION

**Plan Commission**

SHEET TITLE: **COLORED ELEVATIONS**  
 JOB NUMBER: 22181  
 ISSUED DATE: 04.24.2023  
 DRAWN BY: JJR  
 SHEET NUMBER:

**A2.0**