



NELSON
LANDSCAPE INC.

Post Office Box 823
Waukesha, WI 53187-0823
☎ 262-549-6111
☎ 262-549-9229
🌐 www.nelsonlandscape.com

Sheet Title:
LANDSCAPE PLAN

Project:
LOT D
THE SHOPPES
AT FOX RIVER
WAUKESHA, WI

Client:
RAMCO-GERSHENSON, INC.
31500 NORTHWESTERN HWY.,
SUITE 300
FARMINGTON HILLS, MI 48334

Plan Notes:
Designed By: C. J. N.
Drawn By: C. J. N.
Date: 6-15-14
Revisions: 5-20-14, 6-27-14, 7-09-14

Notice:
Copyright © 2014,
Nelson Landscape Incorporated

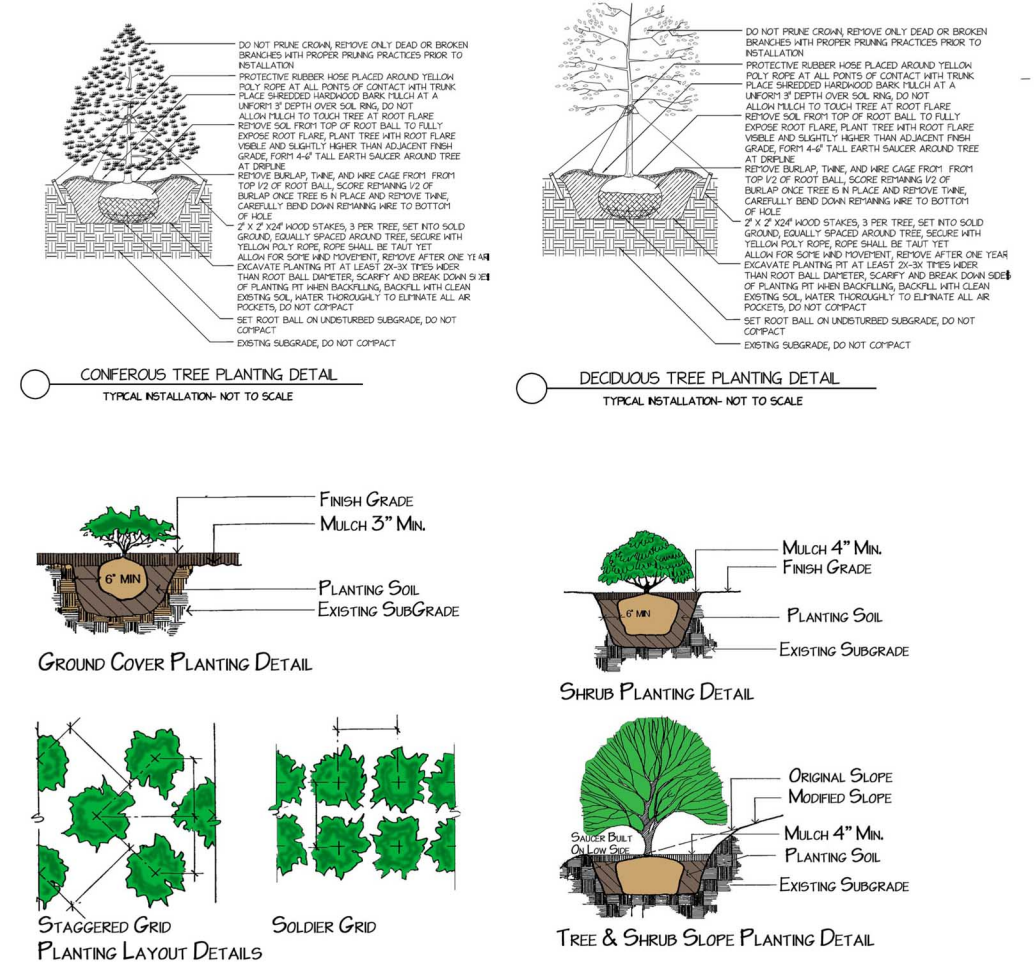
This landscape design plan is the sole property of Nelson Landscape Incorporated and may not be reproduced, altered, or copied in any manner or form without the permission of Nelson Landscape Incorporated. This plan may not be used for bidding purposes without prior consent by Nelson Landscape Incorporated.

This plan is subject to final on-site conditions and may be modified to account for unforeseen obstacles, other changes, or site modifications that were not made known at the time of preparation dated on this plan.

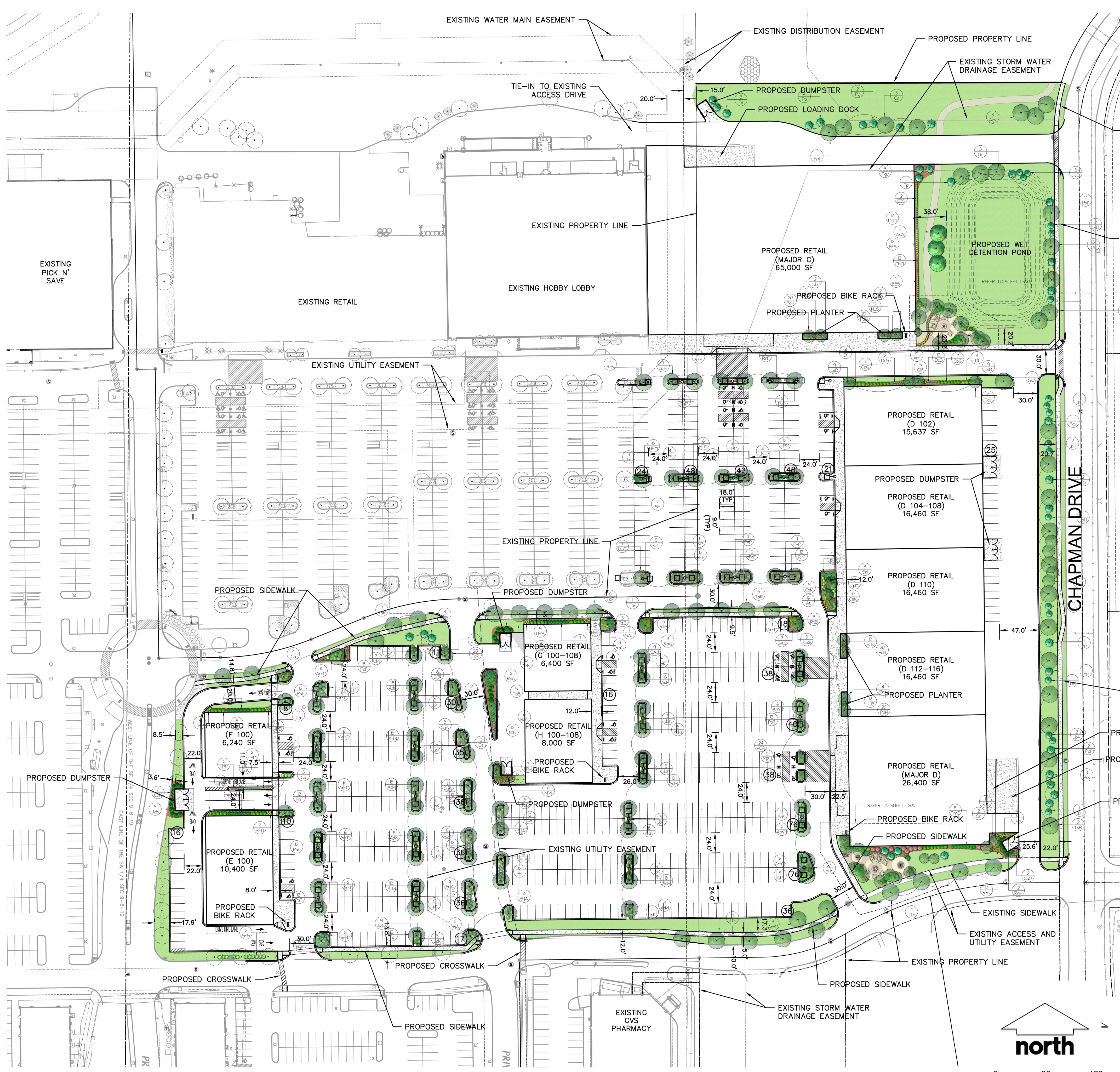
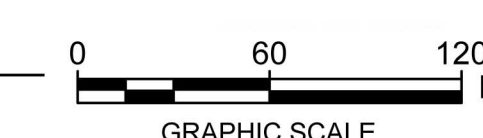


PLANTING NOTES:

- CONTRACTOR SHALL VERIFY LOCATION OF ALL ON-SITE UTILITIES PRIOR TO COMMENCING ANY WORK ON-SITE.
- STATE STATUTE 182.0175 REQUIRES THREE WORK DAYS NOTICE BEFORE YOU EXCAVATE. CALL DIGGER'S HOTLINE AT 1-800-242-8511.
- SUPPLY AND INSTALL ALL WISCONSIN GROWN NURSERY STOCK. GUARANTEE ALL STOCK FOR A PERIOD OF ONE YEAR. ALL PLANTING MATERIAL IS TO MEET AMERICAN STANDARDS FOR NURSERY STOCK ANSI Z601-2004. ALL PLANT MATERIAL IS TO BE PLANTED IMMEDIATELY AFTER ARRIVAL AND UNLOADING ON SITE. PLANT TYPES, SIZES, AND QUANTITIES ARE ACCORDING TO THE PROPOSED PLANS. IF ANY DISCREPANCIES ARE PRESENT BETWEEN PLANT LEGEND AND GRAPHIC DEPICTION, GRAPHICALLY DEPICTED QUANTITIES SHALL HOLD PRECEDENCE.
- ACTUAL LOCATIONS OF PLANT MATERIAL ARE SUBJECT TO FINAL SITE LAYOUT AND CONDITIONS AND MAY BE ADJUSTED ACCORDINGLY.
- STAKE AND STAKE ALL LARGE TREES AND EVERGREENS.
- ALL PLANTS ARE TO BE BACKFILLED WITH A 50/50 MIX OF PLANT STARTER AND TOPSOIL BLEND AND IS TO BE FREE OF ROOTS, ROCKS LARGER THAN 1" IN DIAMETER, SUBSOIL DEBRIS, AND WEEDS.
- OPEN AND REMOVE THE TOP BURLAP AND TWINE OR STRING FROM ALL BALLED AND BURLAPPED PLANTS AND SET ALL PLANTS AT FINISHED GRADE.
- SUPPLY AND INSTALL 3-4" OF SHREDDED HARDWOOD BARK MULCH IN ALL PLANTING BEDS, AND 1-1 1/2" IN ALL PERENNIAL BEDS. TREAT ALL AREAS WITH A PRE-EMERGENT HERBICIDE (GRANULAR FORM) 'TRIFLAN' OR APPROVED EQUAL FOLLOWING ALL MANUFACTURER'S WRITTEN INSTALLATION INSTRUCTIONS PRIOR TO PLACING MULCH.
- SUPPLY AND INSTALL 3-4" OF SHREDDED HARDWOOD MULCH 1' PAST THE DRIP LINE OF ALL INDIVIDUAL TREES. DO NOT PLACE MULCH AGAINST TRUNK OF TREE.
- SUPPLY AND INSTALL BLACK VINYL EDGING 'ACE OF DIAMOND' MANUFACTURED BY VALLEYVIEW INDUSTRIES OR APPROVED EQUAL IN ALL PLANTING BEDS THAT ADJOIN TURF AREAS ACCORDING TO THE MANUFACTURER'S WRITTEN INSTALLATION INSTRUCTIONS.
- ALL TURF AREAS ARE TO BE FINE-GRADED. ALL TURF AREAS ARE TO BE SEEDED, AREAS ARE TO BE SOWN AT THE MANUFACTURER'S RECOMMENDED RATES AND COVERED WITH A CLEAN OAT STRAW. TURF AREAS ARE TO BE SOWN WITH NELSON LANDSCAPE'S CUSTOM BLENDED SEED FOR LAWNS AND IS TO BE APPLIED AT THE RECOMMENDED RATE, A STARTER FERTILIZER APPLIED, AND COVERED WITH A CLEAN OAT STRAW. ANY AREAS WHERE POTENTIAL EROSION EXISTS DUE TO WIND OR WATER OR OTHER MEANS INCLUDING ALL SLOPES OF 3:1 OR GREATER SHALL BE COVERED WITH STRAW EROSION CONTROL BLANKETS 'DS-75' MANUFACTURED BY NORTH AMERICAN GREEN, INSTALLED TO MANUFACTURER'S WRITTEN INSTALLATION INSTRUCTIONS.



Key	Qty	Botanical Name	Common Name	Size/Condition	Remarks
Tr	1	Acer rubra 'Floratino'	STATE STREET NYRARE MAPLE	2 1/2-3 1/2" b.	
Tr	1	Acer glabrum 'Spectabile'	PACIFIC SUNSET MAPLE	2 1/2-3 1/2" b.	
Tr	1	Aesculus glabra var. pallida	OHIO BUCKEYE	2 1/2-3 1/2" b.	
Tr	1	Amelanchier x grandiflora 'Autumn Brilliance'	AUTUMN BRILLIANCE APPLE SERVICEBERRY	6-8 1/2" b.	multi-stem
Tr	1	Betula nigra	RIVER BIRCH	6-8 1/2" b.	multi-stem
Tr	1	Carpinus caroliniana var. virginiana	AMERICAN HORNEBUSH	2-2 1/2" b.	
Tr	1	Celastrus occidentalis	COTTON HACKBERRY	2 1/2-3 1/2" b.	
Tr	1	Ginkgo biloba 'Autumn Gold'	AUTUMN GOLD HAZELNUT TREE	6-8"	
Tr	1	Gleditsia triacanthos f. inermis 'Skyline'	SKYLINE THORNLESS HONEY LOCUST	2 1/2-3 1/2" b.	
Tr	1	Juniperus virginiana 'Burkii'	BURKII BURK EASTERN RED CEDAR	5-6 1/2" b.	
Tr	1	Juniperus x pfitzeriana 'Neltzi'	HETZ BLUE JUNIPER	5-6 1/2" b.	
Tr	1	Malus x Profusion'	PROFUSION FLOWERING CRAB	8-10 1/2" b.	multi-stem
Tr	1	Malus x Red Jewel'	RED JEWEL FLOWERING CRAB	2-2 1/2" b.	
Tr	1	Prunella alba	NORWAY SPRUCE	7-8 1/2" b.	
Tr	1	Prunella glabra	WHITE SPRUCE	7-8 1/2" b.	
Tr	1	Prunella glabra var. demissa	BLACK HILLS SPRUCE	7-8 1/2" b.	
Tr	1	Prunella juncea	COLORADO GREEN SPRUCE	7-8 1/2" b.	
Tr	1	Prunella juncea f. glauca	COLORADO BLUE SPRUCE	7-8 1/2" b.	
Tr	1	Pinus sylvestris	SCOTCH PINE	7-8 1/2" b.	
Tr	1	Prunus avium	APRIL CHOCOLATE	6-8 1/2" b.	multi-stem
Tr	1	Prunus pennsylvanica 'Redspire'	REDSPIRE CALLERY PEAR	2 1/2-3 1/2" b.	
Tr	1	Quercus bicolor	SHAPP WHITE OAK	2 1/2-3 1/2" b.	
Tr	1	Syringia reticulata	JAPANESE TREE LILAC	8-10 1/2" b.	multi-stem
Tr	1	Syringia reticulata ' Ivory Silk'	IVORY SILK JAPANESE TREE LILAC	8-10 1/2" b.	multi-stem
Tr	1	Taxodium distichum	BALD CYPRESS	2 1/2-3 1/2" b.	
Tr	1	Thuja occidentalis 'Emerald Green'	EMERALD ARBORVITAE	5-6 1/2" b.	
Tr	1	Thuja occidentalis 'Sunkist'	SUNKIST ARBORVITAE	5-6 1/2" b.	
Tr	1	Tilia americana 'Rainford'	REDFORD AMERICAN BASSWOOD	2 1/2-3 1/2" b.	
Tr	1	Tilia tomentosa 'Sterling'	STERLING SILVER LINDEN	2 1/2-3 1/2" b.	
Tr	1	Ulmus americana 'Prospector'	PROSPECTOR ELM	2 1/2-3 1/2" b.	
Gr	30	Aranis melanocephala 'Horizon'	RODONS BEAUTY BLACK BERRIED AROMA	8-24"/cont.	
Gr	14	Ceanothus americanus	NEW JERSEY TEA	24-36"/b.	
Gr	14	Chamaecyparis ptilera 'Golden Hope'	GOLDEN HOPE JAPANESE FALSE CYPRESS	8-24"/cont.	
Gr	35	Cornus alternifolia 'Kobold'	KELSEYS DOGWOOD	8-24"/cont.	
Gr	8	Diervilla lonicera	BUSH HONEYSUCKLE	8-24"/cont.	
Gr	15	Juniperus horizontalis 'Hughes'	HUGHES CREEPING JUNIPER	8-24"/cont.	
Gr	15	Juniperus x pfitzeriana 'Kallay's Compact'	KALLAY'S COMPACT JUNIPER	8-24"/cont.	
Gr	15	Juniperus x pfitzeriana 'Horizon P.P. #1722'	SEA OF GOLD/JUNIPER	8-24"/cont.	
Gr	15	Rhus aromatica 'Fraxinifolia'	GO-LOM FRAGRANT SUMAC	8-24"/cont.	
Gr	15	Rhus typhina	TIGER EYES SUMAC	8-24"/cont.	
Gr	15	Rosa 'Rozara'	KNOCK OUT ROSE	8"/cont.	
Gr	15	Rosa rugosa 'Fru Dagbon' 'Holland'	FRAU DAGMAR HESTRUP JAPANESE ROSE	8"/cont.	
Gr	15	Spiraea japonica 'Anthony Waterer'	ANTHONY WATERER SPIREA	8-24"/cont.	
Gr	15	Spiraea nipponica 'Emuand'	SNOWGLOBE NIPPON SPIREA	24-36"/b.	
Gr	15	Taxus canadensis 'Tussock'	EVERDAM TAXUS	8-24"/cont.	
Gr	15	Thuja occidentalis 'Little Giant'	LITTLE GIANT ARBORVITAE	8-24"/cont.	
Gr	30	Calamagrostis x acutiflora 'Karl Foerster'	KARL FOERSTER FEATHER REED GRASS	8"/cont.	
Gr	24	Deschampsia cespitosa 'Isotrientalis'	SCOTLAND TUFTED HAIR GRASS	8"/cont.	
Gr	15	Panicum virgatum 'Prairie Sky'	PRAIRIE SKY SWITCH GRASS	8"/cont.	
Gr	15	Phalaris arundinacea 'Feesey'	FEESSEY GARDENERS GARTER GRASS	8"/cont.	
Gr	15	Schizanthus scaberrimus	PRAIRIE GRASS	8"/cont.	
Gr	24	Sporobolus heterostachyus	PRAIRIE DROPSSEED GRASS	8"/cont.	
Gr	24	Miscanthus sinensis 'Majestic'	MAJESTIC TALL GRASS	8"/cont.	
Gr	12	Calamagrostis x acutiflora 'Overdam'	OVERDAM FEATHER REED GRASS	8"/cont.	
Gr	15	Alchemilla mollis	LADYS MANTLE	8"/cont.	
Gr	15	Asclepias tuberosa	INDIAN PAINTBRUSH	8"/cont.	
Gr	15	Aster amurensis 'Hokus Purple'	HOKUS PURPLE ASTER	8"/cont.	
Gr	15	Geranium 'Rozanne'	ROZANNE GERANIUM	8"/cont.	
Gr	24	Hemerocallis 'Chicago Apache'	CHICAGO APACHE DAYLILY	8"/cont.	
Gr	15	Hemerocallis 'Joan Sear'	JOAN SEAR DAYLILY	8"/cont.	
Gr	15	Hemerocallis 'Parade'	PARADE DAYLILY	8"/cont.	
Gr	15	Hemerocallis 'Prarie Blue Eyes'	PRAIRIE BLUE EYES DAYLILY	8"/cont.	
Gr	15	Leucanthemum x superbum 'Becky'	BECKY SHASTA DAISY	8"/cont.	
Gr	15	Nepeta x faassenii 'Walker's Low'	WALKERS LOW CATMINT	8"/cont.	
Gr	15	Penstemon digitalis 'Walker's Red'	WALKERS RED PENSTEMON	8"/cont.	
Gr	15	Rubus odoratus 'Herbstsonne'	HERBSTSONNE AUTUMN SUN	8"/cont.	
Gr	15	Rubus odoratus 'Black Eye Susan'	GOLDEN TRUMPET BLACK EYE SUSAN	8"/cont.	
Gr	15	Sedum 'Autumn Joy'	AUTUMN JOY SEDUM	8"/cont.	



Landscape Designers & Contractors Celebrating Over Fifty Years of Outstanding Results

- Residential
- Commercial
- Design/Build