

Project:
Milwaukee Motorwerks
Corporate Ct. & Corporate Dr.
Waukesha, WI 53189

Contractor: _____

COPYRIGHT Keller Architectural Design, LLC. 2019
ALL RIGHTS RESERVED
THIS DRAWING IS NOT TO BE REPRODUCED, CHANGED,
COPIED OR ASSIGNED TO ANY THIRD PARTY IN ANY
FORM OR MANNER WITHOUT FIRST OBTAINING THE
EXPRESSED WRITTEN PERMISSION OF Keller Architectural
Design, LLC. THE CLIENT AGREES TO INDEMNIFY AND
HOLD THE ARCHITECT HARMLESS FROM ANY
DAMAGES, LIABILITY, OR COST, INCLUDING
ATTORNEY'S FEES AND COSTS OF DEFENSE ARISING
FROM ANY CHANGES OR ALTERATIONS MADE BY
ANYONE OTHER THAN THE ARCHITECT, OR FROM ANY
REUSE OF THE DRAWINGS OR DATA WITHOUT THE
PRIOR WRITTEN CONSENT OF THE ARCHITECT.

Revisions: _____

Date	Number	Description

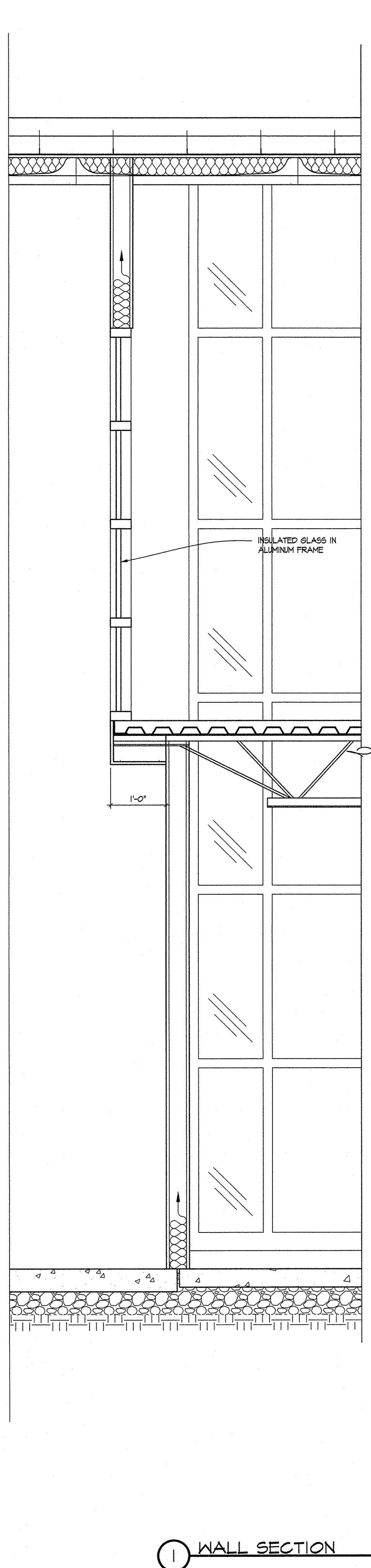
Sheet Title: _____

WALL SECTIONS

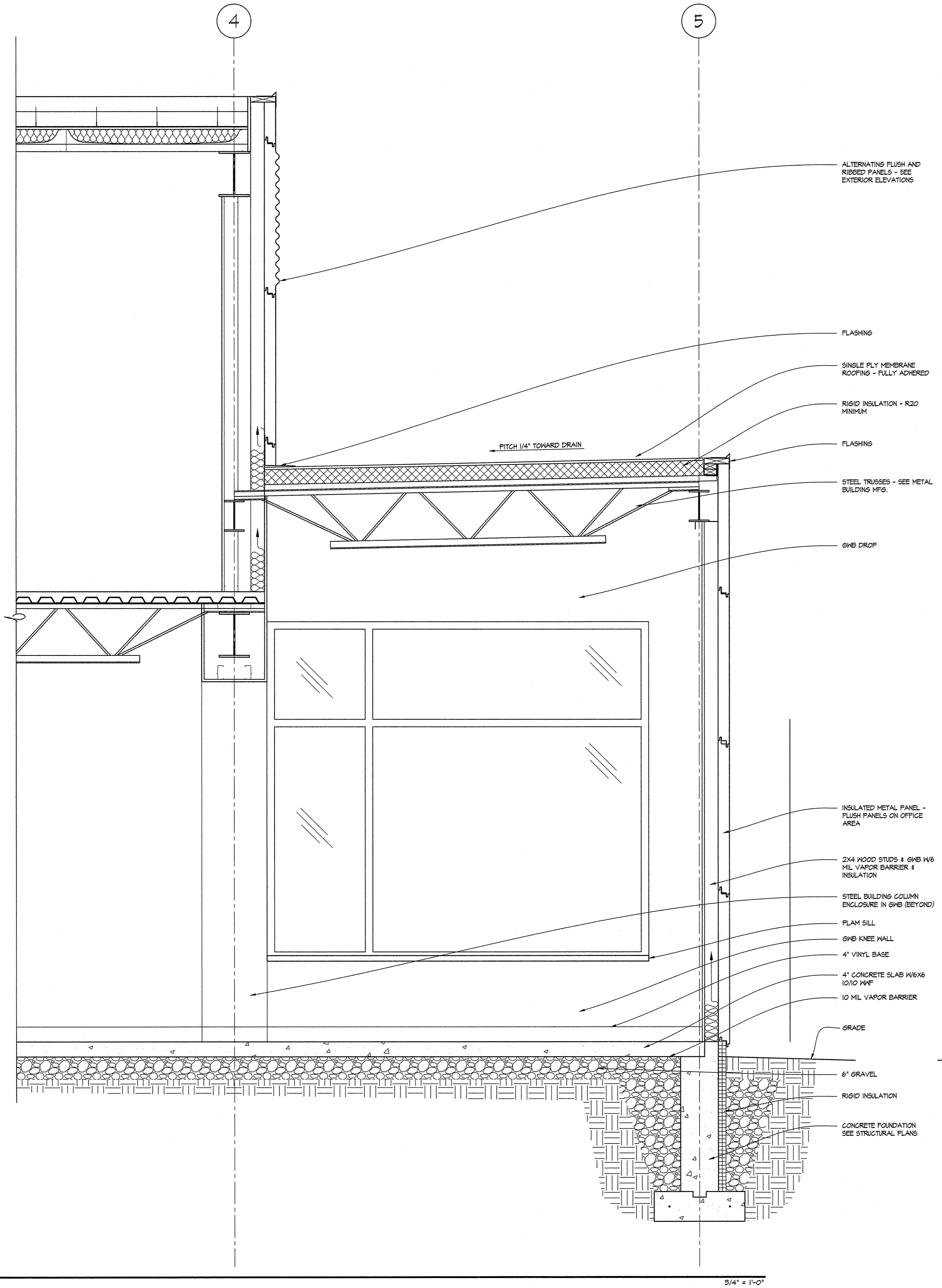
Project No.: 19.2

Date: September 12, 2019

Sheet No.: _____

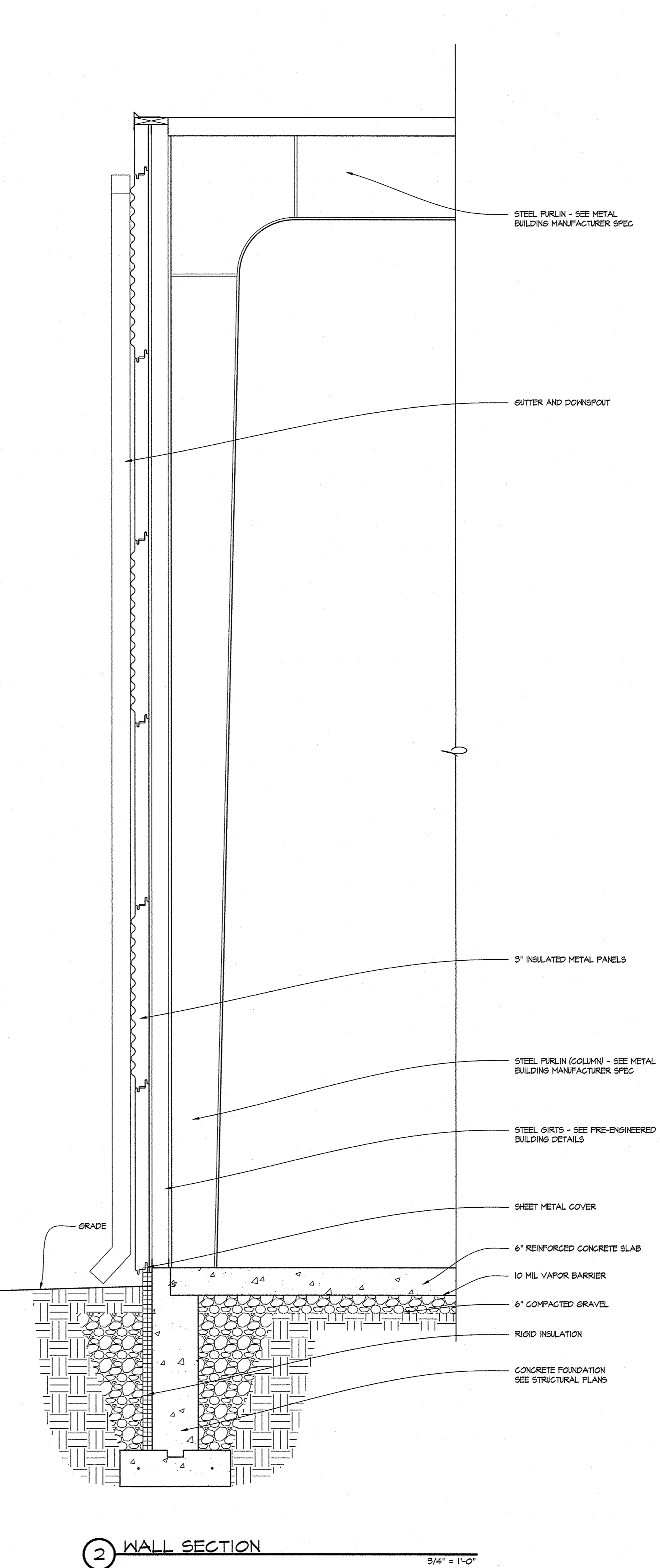


① WALL SECTION



5

3/4" = 1'-0"



② WALL SECTION

3/4" = 1'-0"

- ALTERNATING FLUSH AND RIBBED PANELS - SEE EXTERIOR ELEVATIONS
- FLASHING
- SINGLE PLY MEMBRANE ROOFING - FULLY ADHERED
- RIGID INSULATION - R20 MINIMUM
- FLASHING
- STEEL TRUSSES - SEE METAL BUILDINGS MFG.
- 6x8 DROP

- INSULATED METAL PANEL - FLUSH PANELS ON OFFICE AREA
- 2x4 WOOD STUDS & 6x8 W6 MIL VAPOR BARRIER & INSULATION
- STEEL BUILDING COLUMN ENCLOSURE IN 6x8 (BEYOND)
- FLAM SILL
- 6x8 KNEE WALL
- 4" VINYL BASE
- 4" CONCRETE SLAB W/6x6 10/10 W/F
- 10 MIL VAPOR BARRIER
- GRADE
- 6" GRAVEL
- RIGID INSULATION
- CONCRETE FOUNDATION SEE STRUCTURAL PLANS

- STEEL FURLIN - SEE METAL BUILDING MANUFACTURER SPEC
- GUTTER AND DOWNSPOUT
- 3" INSULATED METAL PANELS
- STEEL FURLIN (COLUMN) - SEE METAL BUILDING MANUFACTURER SPEC
- STEEL GIRTS - SEE PRE-ENGINEERED BUILDING DETAILS
- SHEET METAL COVER
- 6" REINFORCED CONCRETE SLAB
- 10 MIL VAPOR BARRIER
- 6" COMPACTED GRAVEL
- RIGID INSULATION
- CONCRETE FOUNDATION SEE STRUCTURAL PLANS