

eppstein uhlen · architects  
 Milwaukee 333 East Chicago Street  
 Milwaukee Wisconsin 53202  
 Telephone 414.271.2500 Fax 414.271.2501  
 Madison Wisconsin 53703  
 Telephone 608.442.5500

PROJECT INFORMATION  
**PHC WMH -  
 CENTRAL UTILITY  
 PLANT**  
 725 AMERICAN  
 AVENUE,  
 WAUKESHA, WI  
 53188

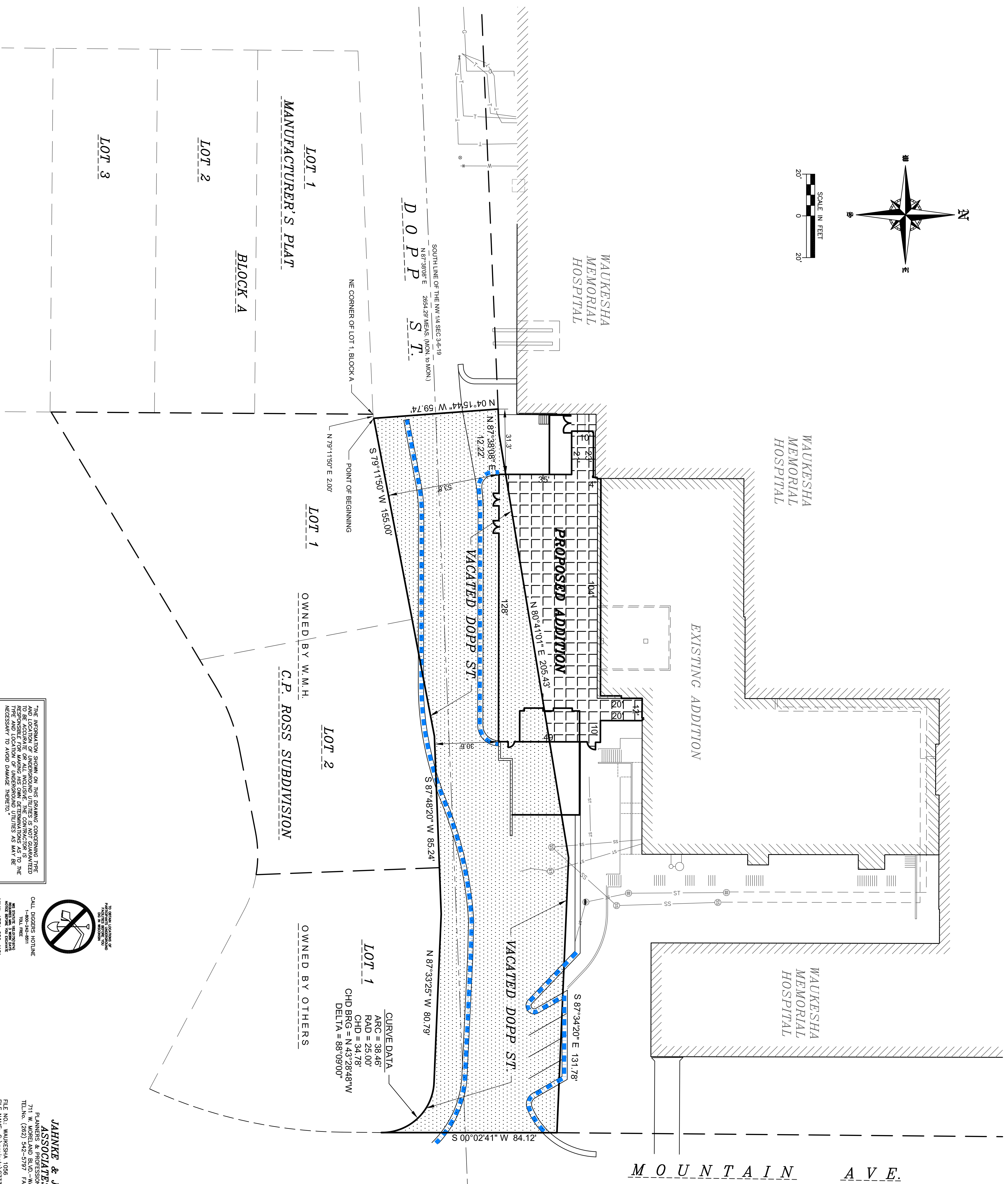
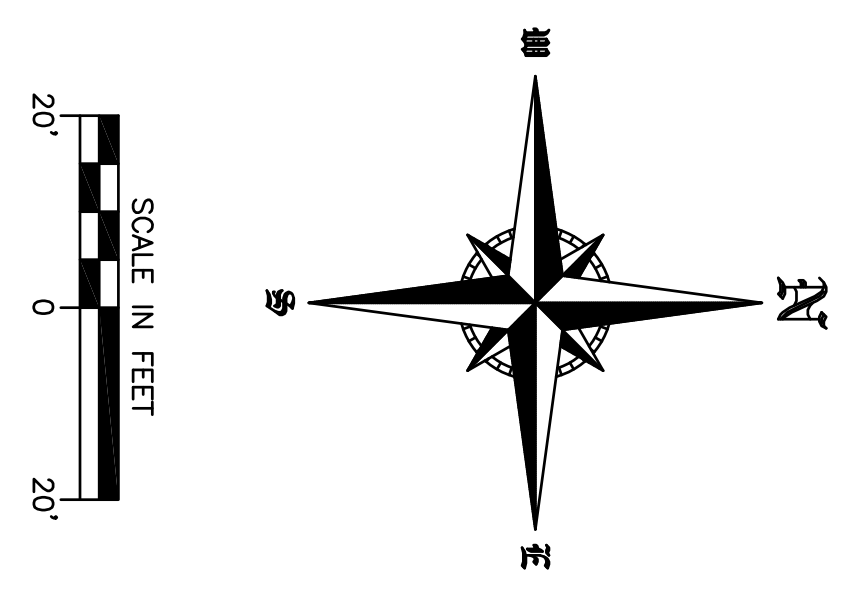
ISSUANCE AND REVISIONS  
 CONSTRUCTION DOCUMENTS  
 BID PACKAGE 1 - SITEWORK,  
 FOOTINGS & FOUNDATIONS  
 # DATE DESCRIPTION

KEY PLAN

SHEET INFORMATION

PROJECT MANAGER RK  
 PROJECT NUMBER 413059  
 DATE NOVEMBER 11, 2015

PLAT OF SURVEY  
**C100**



THE INFORMATION SHOWN ON THIS DRAWING CONCERNING THE LOCATION OF UNDERGROUND UTILITIES IS NOT GUARANTEED. THE CONTRACTOR SHALL VERIFY THE LOCATION AND DEPTH OF ALL UTILITIES PRIOR TO CONSTRUCTION. THE CONTRACTOR SHALL BE RESPONSIBLE FOR ANY DAMAGE TO UTILITIES THAT MAY BE NECESSARY TO AVOID DAMAGE THEREIN.



JAHNKE & JAHNKE  
 PLANNING ENGINEERS  
 711 W. MORELAND BLVD. - WAUKESHA, WI 53188  
 TEL: (262) 542-5797 FAX: (262) 542-7698  
 FILE NO. WAUKESHA 1056 BOOK NO. WAUKESHA 179  
 FILE NAME: S:\072\1056\1056.dwg  
 SCALE: 1" = 20'