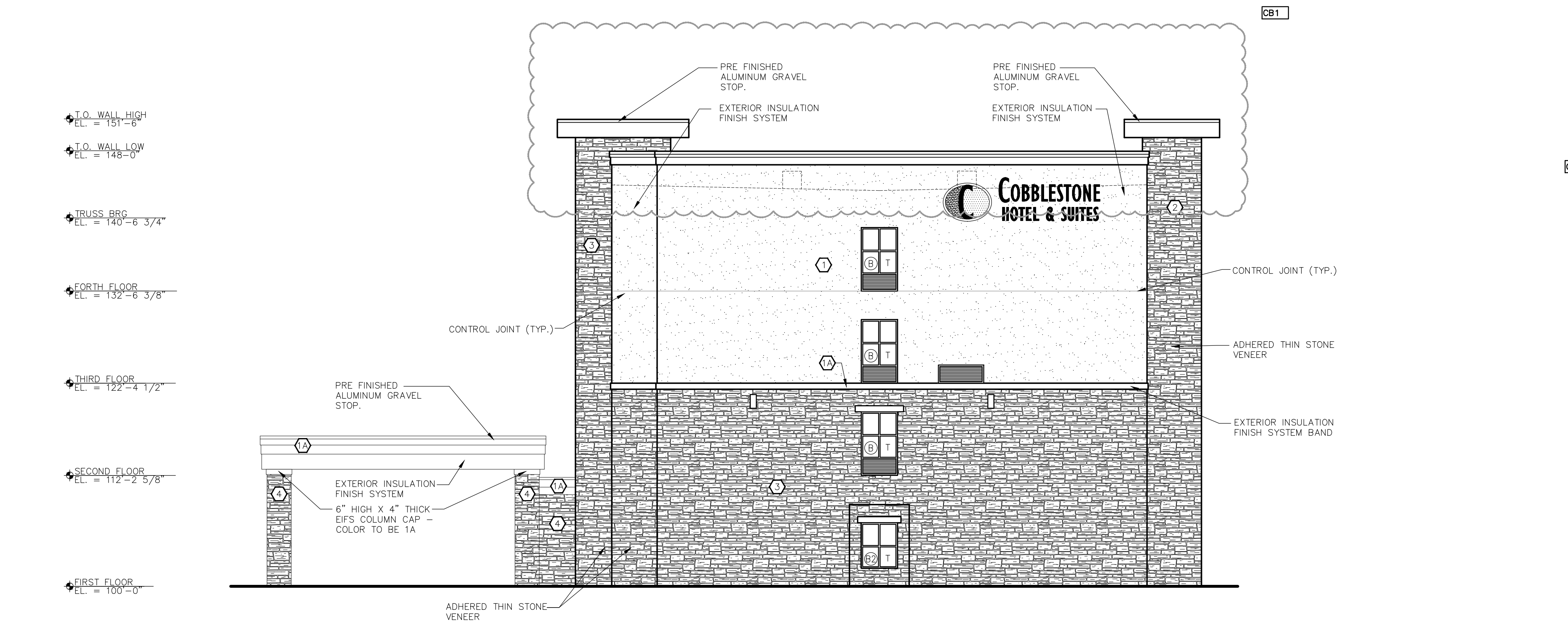


NORTH ELEVATION
 SCALE: 1/8" = 1'-0"



WEST ELEVATION
 SCALE: 1/8" = 1'-0"

| EXTERIOR COLORS | | |
|-----------------|---|---|
| EIFS COLOR #1 | 1 | TOTAL WALL, NATURAL SILK #2060 |
| EIFS COLOR #2 | 2 | TOTAL WALL, CUSTOM DARK BROWN TO MATCH ROOF COPING |
| BILTMORE | 2 | BILTMORE - SAND |
| NOT USED | 3 | TBD |
| STONE | 4 | ADHERED STONE VENEER CENTURION 'CATHEDRAL STONE' COLOR: PLAIN |
| STONE | 5 | DESIGNER SERIES - KENTUCKY |

NOTE: #5 STONE ONLY APPEARS ON PATIO FIREPLACE AND INSIDE RESTAURANT. SEE A4.4 AND A9.0 FOR DETAILS.

| WINDOW SCHEDULE | | | |
|-----------------|----------|---------------------------------------|--|
| SYM. | MAT'L | DESCRIPTION | ROUGH OPENING UNIT SIZE W/PT. |
| A | ALUMINUM | FIXED WINDOW | UNIT: (1) 5'-0" X 5'-0" + PTAC GRILLE |
| B | ALUMINUM | FIXED WINDOW | UNIT: (1) 4'-0" X 5'-0" + PTAC GRILLE |
| B2 | ALUMINUM | FIXED WINDOW | UNIT: (1) 4'-0" X 5'-0" NO PTAC GRILLE |
| C | ALUMINUM | FIXED WINDOW | UNIT: (1) 5'-0" X 7'-0" NO PTAC GRILLE |
| D | ALUMINUM | FIXED WINDOW W/ BRONZE TINTED GLAZING | UNIT: (1) 5'-0" X 7'-0" NO PTAC GRILLE |
| E | ALUMINUM | FIXED WINDOW | UNIT: (1) 4'-0" X 7'-0" NO PTAC GRILLE |
| F | ALUMINUM | NOT USED | NOT USED |
| | | | UNIT: (1) 5'-0" X 5'-0" NO PTAC GRILLE |

- PER IBC 2406.3.6 SAFETY GLAZING ADJACENT TO A DOOR WHERE THE NEAREST EXPOSED EDGE OF THE GLAZING IS WITHIN 24"
 - WINDOW MANUFACTURER SHALL REVIEW WINDOW LOCATIONS AND PROVIDE SAFETY GLAZING IN ALL LOCATIONS REQUIRED BY IBC CHAPTER 24.
 - WINDOW COLOR: QUAKER TRADITIONAL SERIES T200, DARK BRONZE (TYP.)