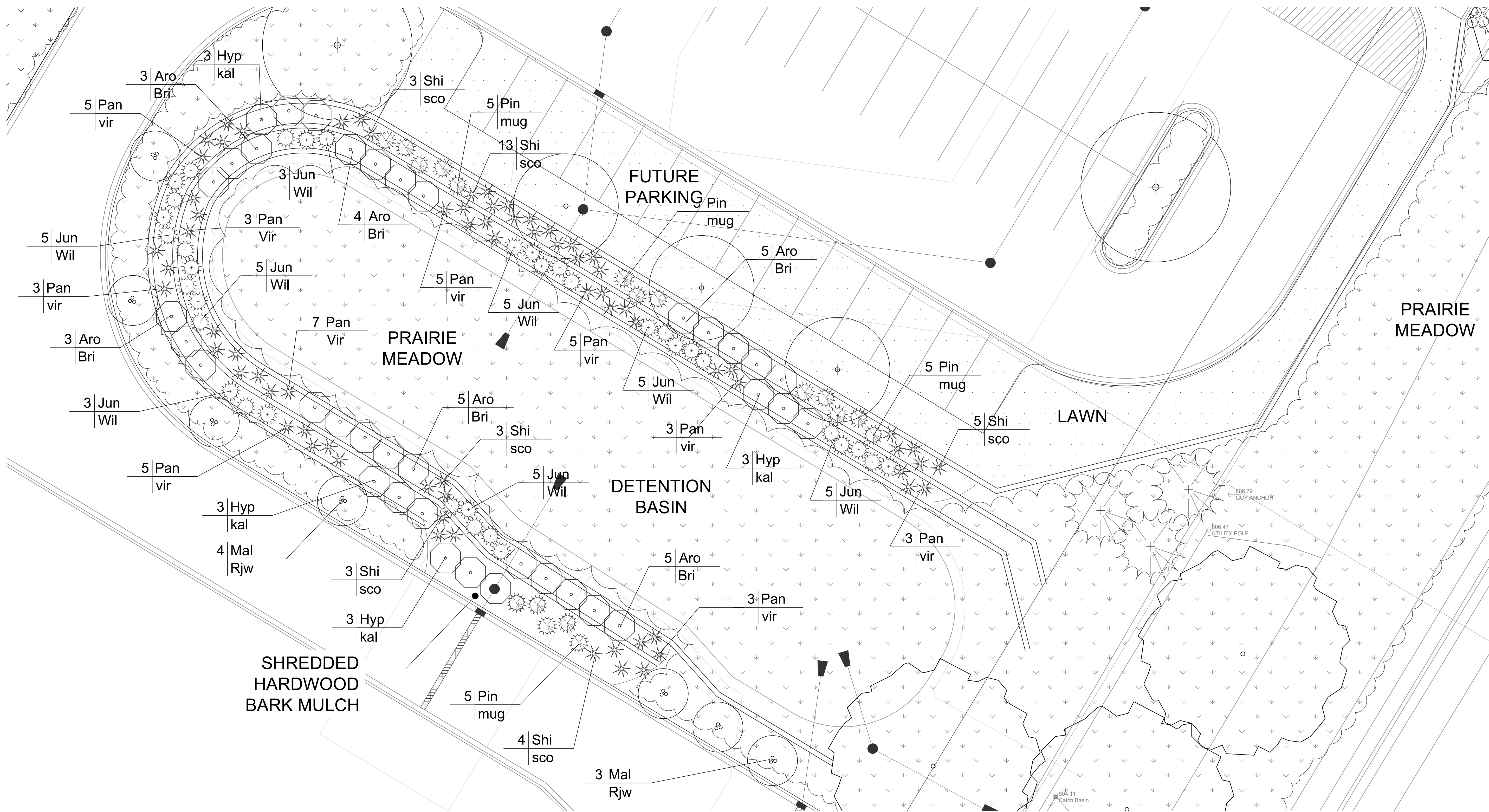


NOT FOR
CONSTRUCTION



1 Landscape Details Basin

L.3 SCALE: 1" = 10'-0"

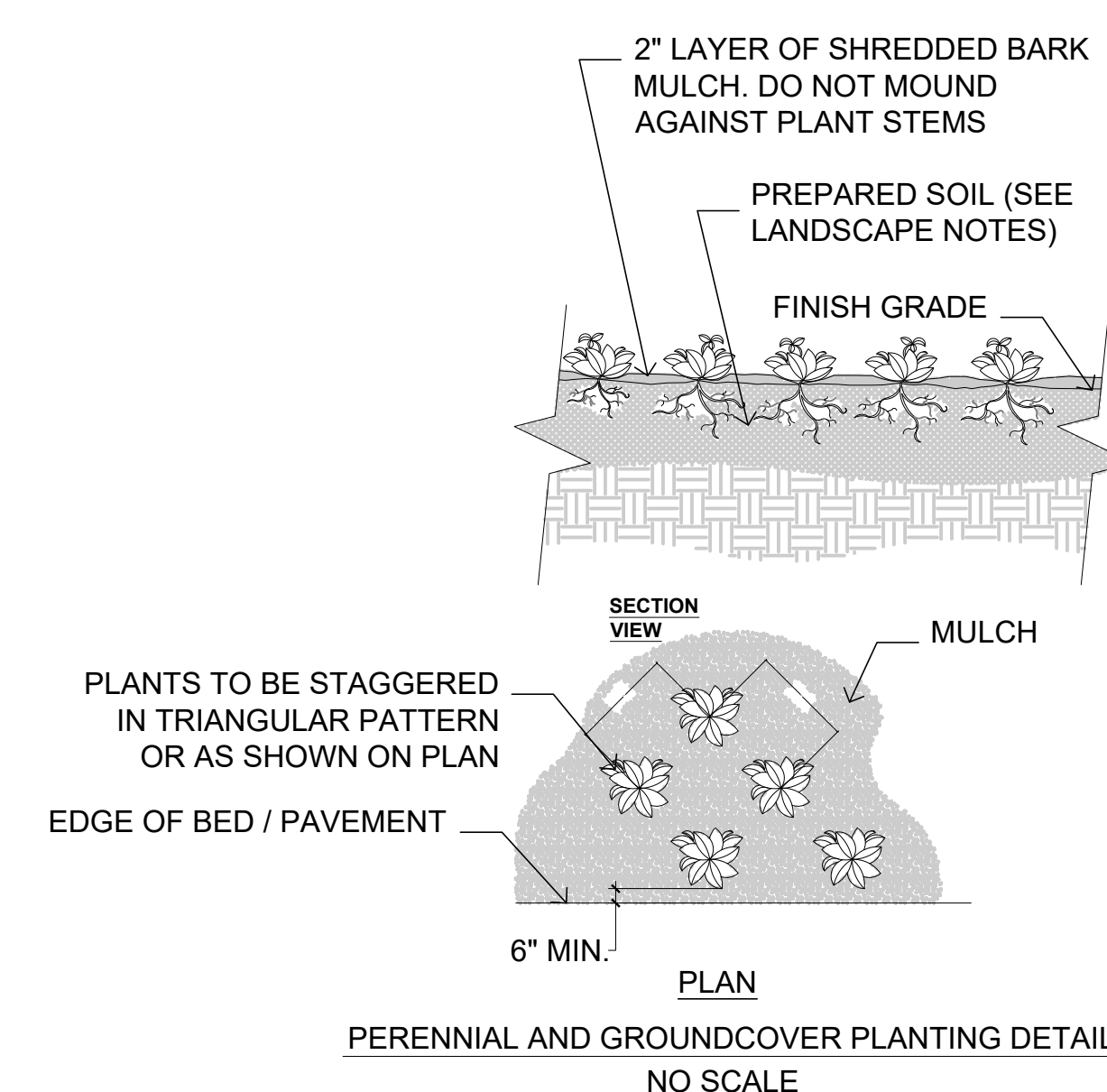
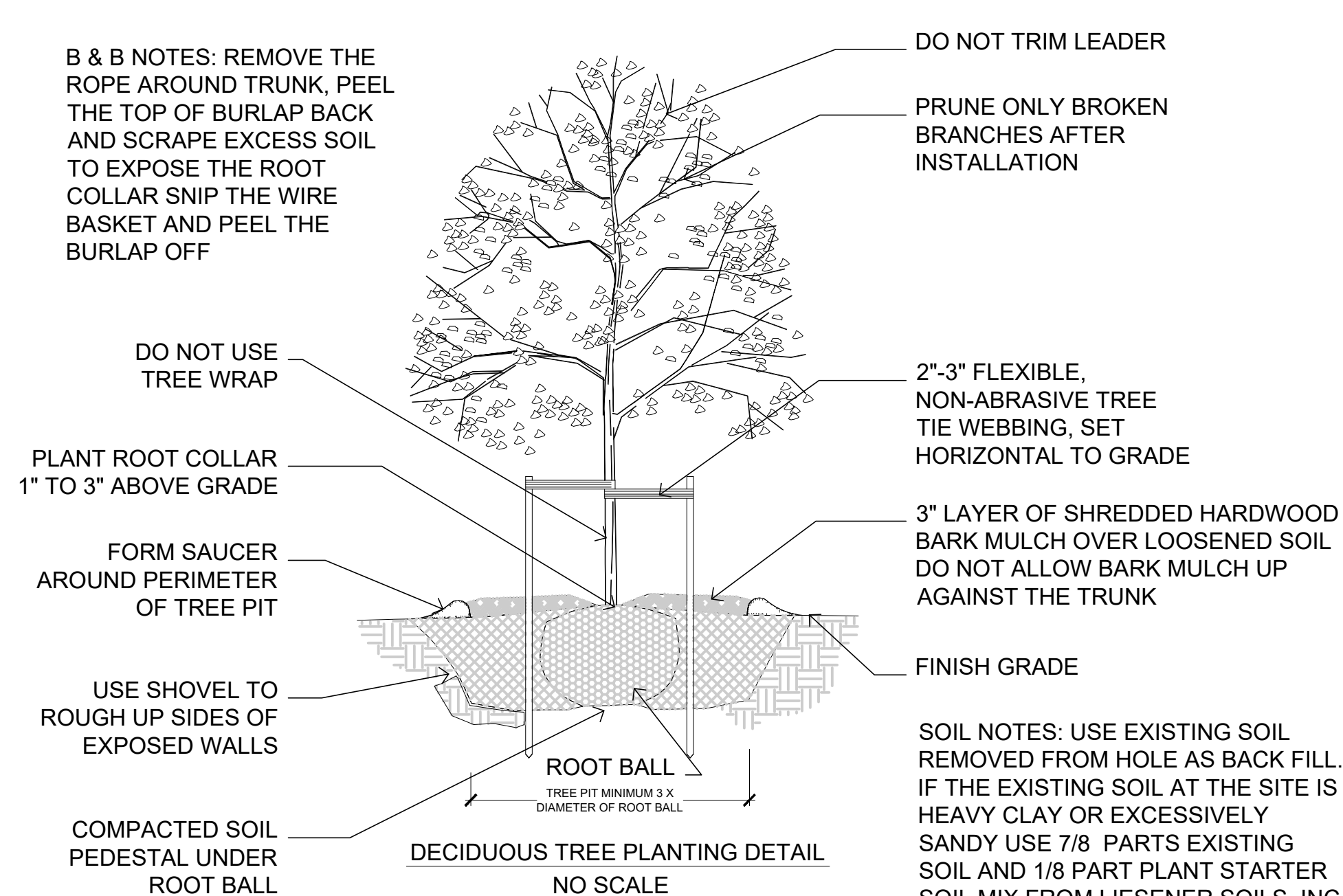
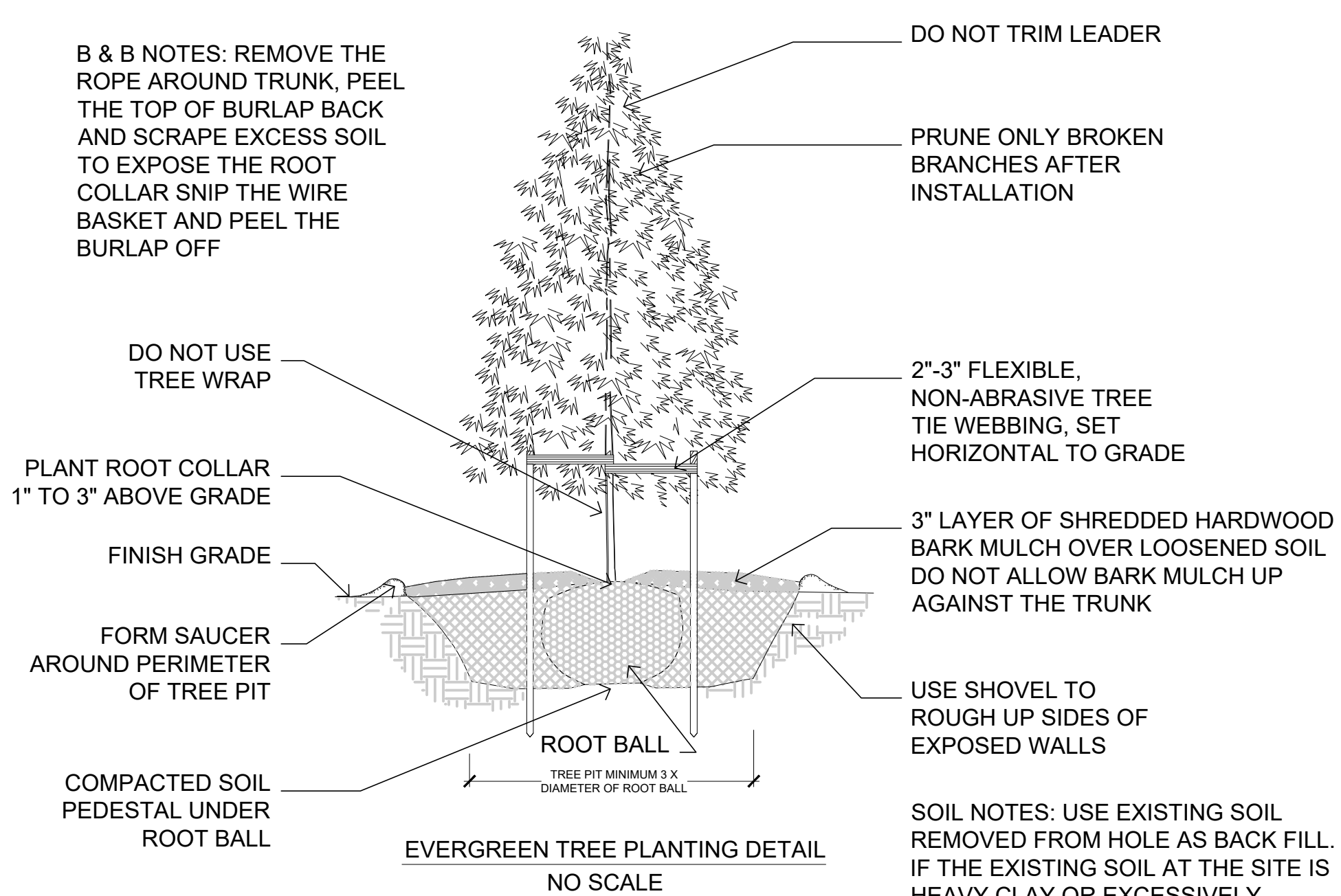
THE UNDERGROUND UTILITY INFORMATION SHOWN ON THIS MAP IS BASED ON FIELD MARKINGS AND INFORMATION FURNISHED BY UTILITY COMPANIES AND THE LOCAL MUNICIPALITY. WHILE THIS INFORMATION IS BELIEVED TO BE RELIABLE, ITS ACCURACY AND COMPLETENESS CANNOT BE GUARANTEED.



Revisions

DNR NOTES: THIS PLANTING DETAIL CONFORMS TO TREE PLANTING GUIDELINES AS SPECIFIED IN DNR DOCUMENT, 'DEVELOPING PLANTING SPECIFICATIONS' REVISED 10/25

DNR NOTES: THIS PLANTING DETAIL CONFORMS TO TREE PLANTING GUIDELINES AS SPECIFIED IN DNR DOCUMENT, 'DEVELOPING PLANTING SPECIFICATIONS' REVISED 10/25



PLANTING NOTES: REMOVE PLANT FROM CONTAINER. LOOSEN THE ROOTS WITHING THE ROOT BALL AND CUT ROOT-BOUND ENCIRCLING ROOTS ON THE PERIMETER OF THE ROOT BALL PRIOR TO PLANTING. SETTLE SOIL AROUND THE LOOSENEED ROOT BALL PRIOR TO MULCHING. UPON PLANTING, GENEROUSLY WATER TO MINIMIZE TRANSPLANT SHOCK.



CALL DIGGERS HOTLINE
1-800-242-8511
TOLL FREE

CITY OF WAUKESHA PLAN COMMISSION REVIEW

SCOPE DOCUMENTS

Drawing Date
5/31/2019

FROEDTERT SUNSET DRIVE CLINIC

Project No. FROEDTERT HEALTH
218082.00

Sheet Title

Landscape Details & Basin Plan

Copyright © 2019 Kahler Slater, Inc. All rights reserved.
111 West Wisconsin Avenue, Milwaukee, Wisconsin 53203
Telephone 414.272.2300, Fax 414.272.2031
44 East Mifflin Street, Suite 700, Madison, Wisconsin 53703
Telephone 608.253.6300, Fax 608.253.6317

Sheet No.

L.3