





Waukesha Civic Theatre



301 N BROOM STREET #100, MADISON, WI 53703
 P. 608.819.0260 F. 608.819.0261 www.opnarchitects.com

ARCHITECT
 OPN ARCHITECTS
 301 N BROOM ST, SUITE 100
 MADISON, WI 53703

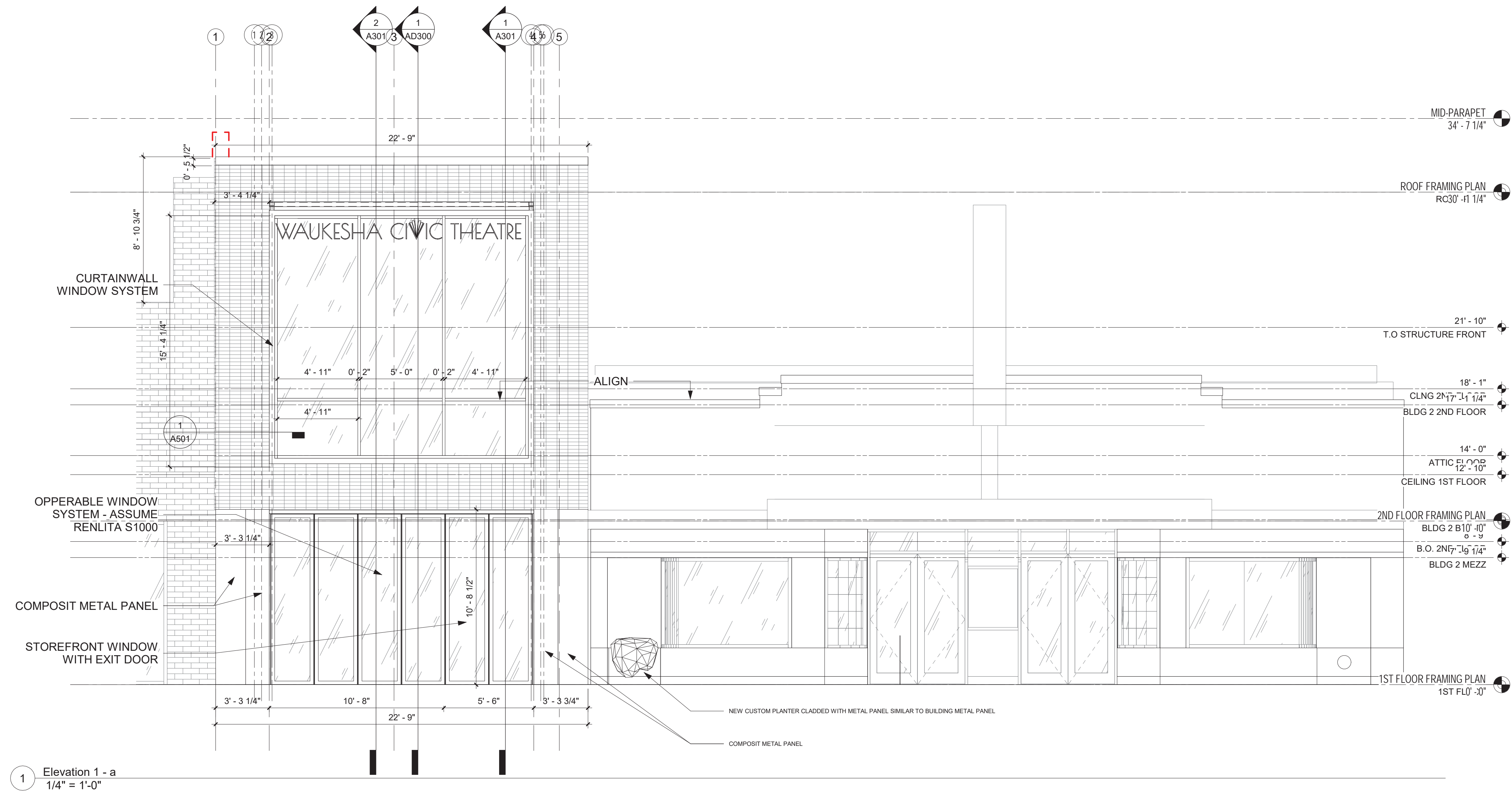
CONSTRUCTION MANAGER

MECHANICAL ENGINEER
 Design Engineers
 437 S Yellowstone Dr, Suite 110
 Madison, WI 53719

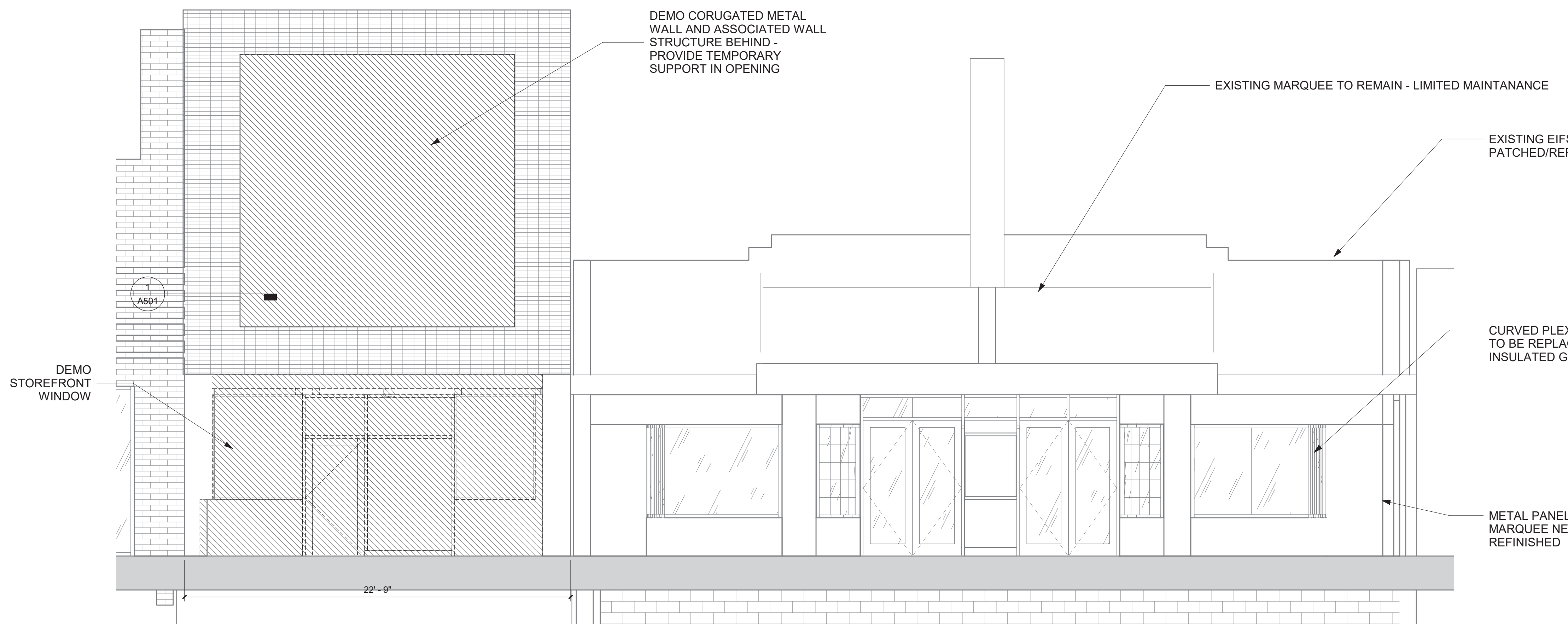
STRUCTURAL ENGINEER
 Strategic Structural Design
 8517 Excelsior Dr., Suite 201
 Madison, WI 53717

ELECTRICAL ENGINEER
 Design Engineers
 437 S Yellowstone Dr, Suite 110
 Madison, WI 53719

PRINTED: 9/21/2021 5:30:38 PM



1 Elevation 1 - a
1/4" = 1'-0"



2 Elevation 1 - a Copy 1
1/4" = 1'-0"



EIFS REPAIR



EIFS REPAIR

REPLACE CURVED PLEXI GLASS WITH GLASS



DEMO BLUE CORRUGATED METAL

DEMO EXISTING STOREFRONT AND AWNING



REPLACE NEON

STUCCO REQUIRES MAINTENANCE

CANOPY/MARQUEE REQUIRE MINOR MAINTENANCE

REFINISH ALL METAL PANEL

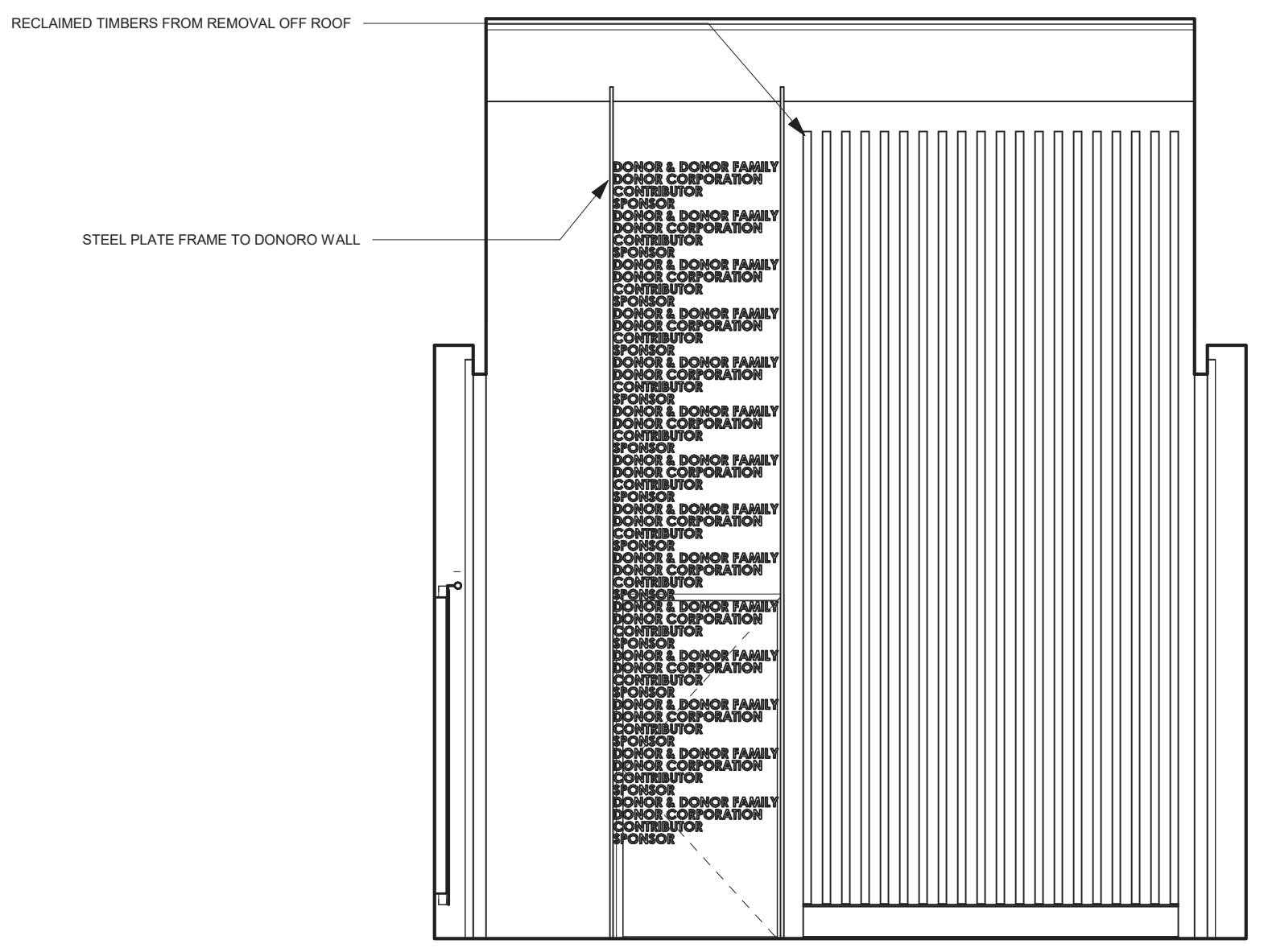
REPLACE NEON



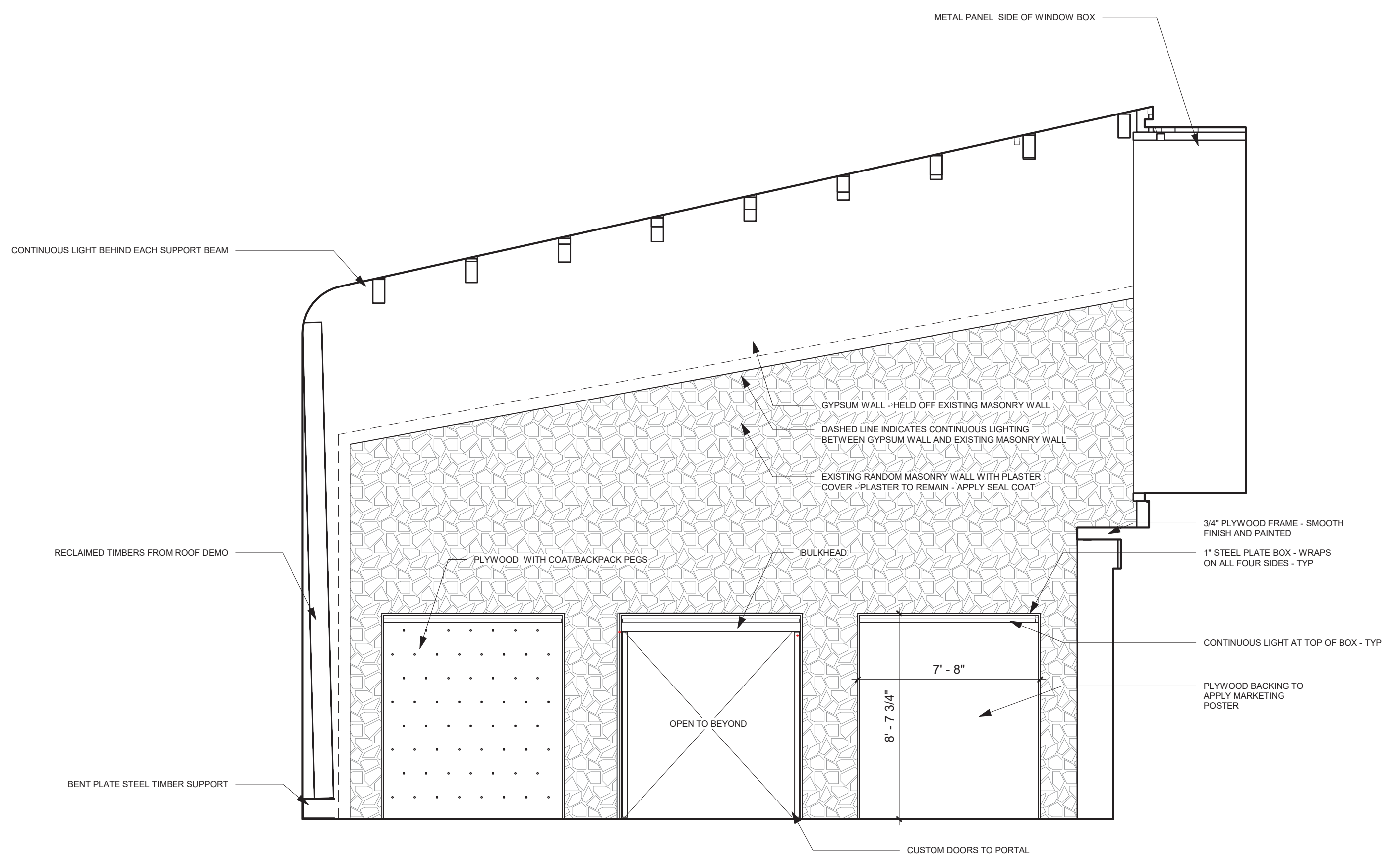
EXISTING BACK EXTERIOR OF THEATRE - ASSUME MINOR MAINTENANCE

PRELIMINARY. NOT FOR CONSTRUCTION.

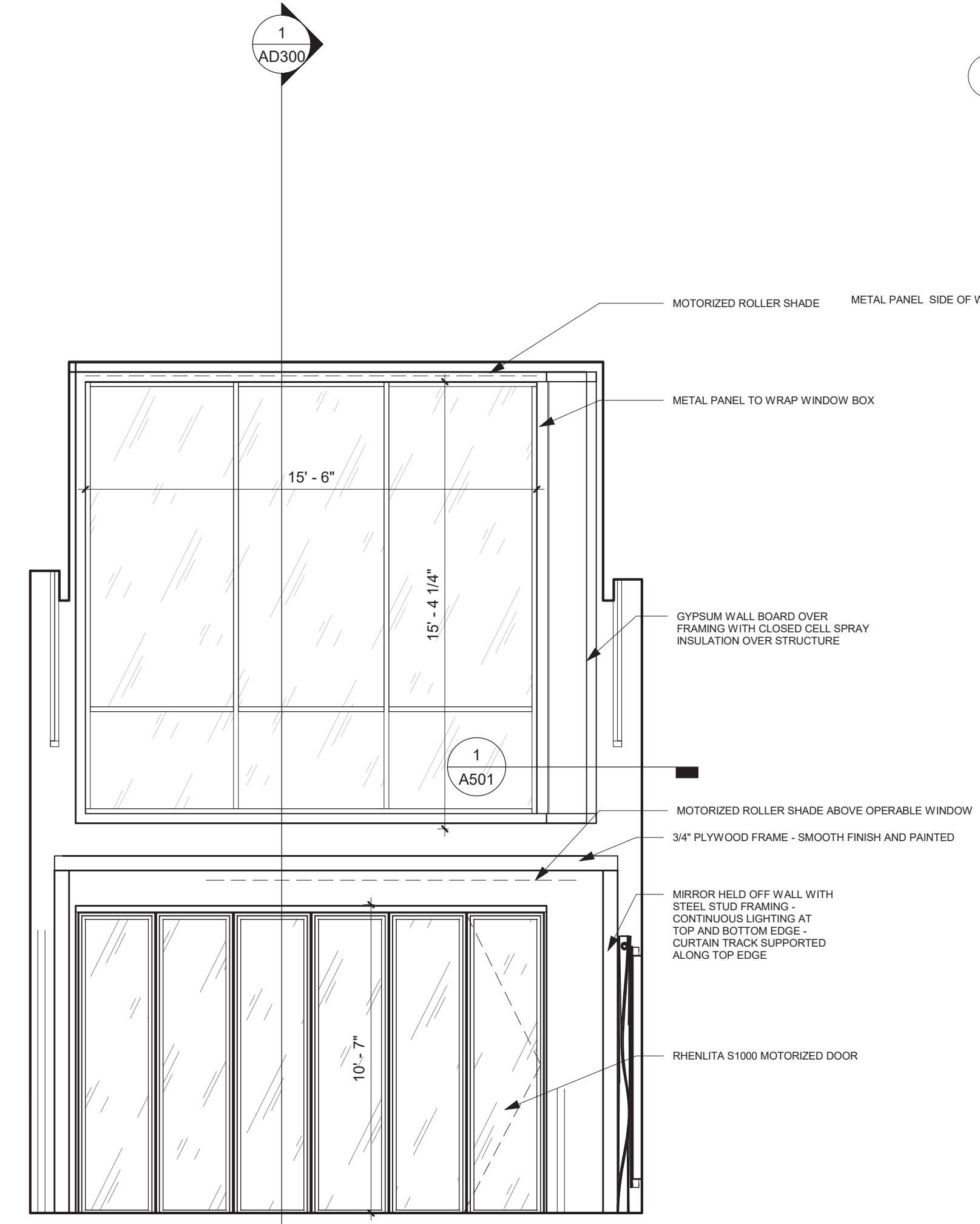
ACCESSORIES LEGEND



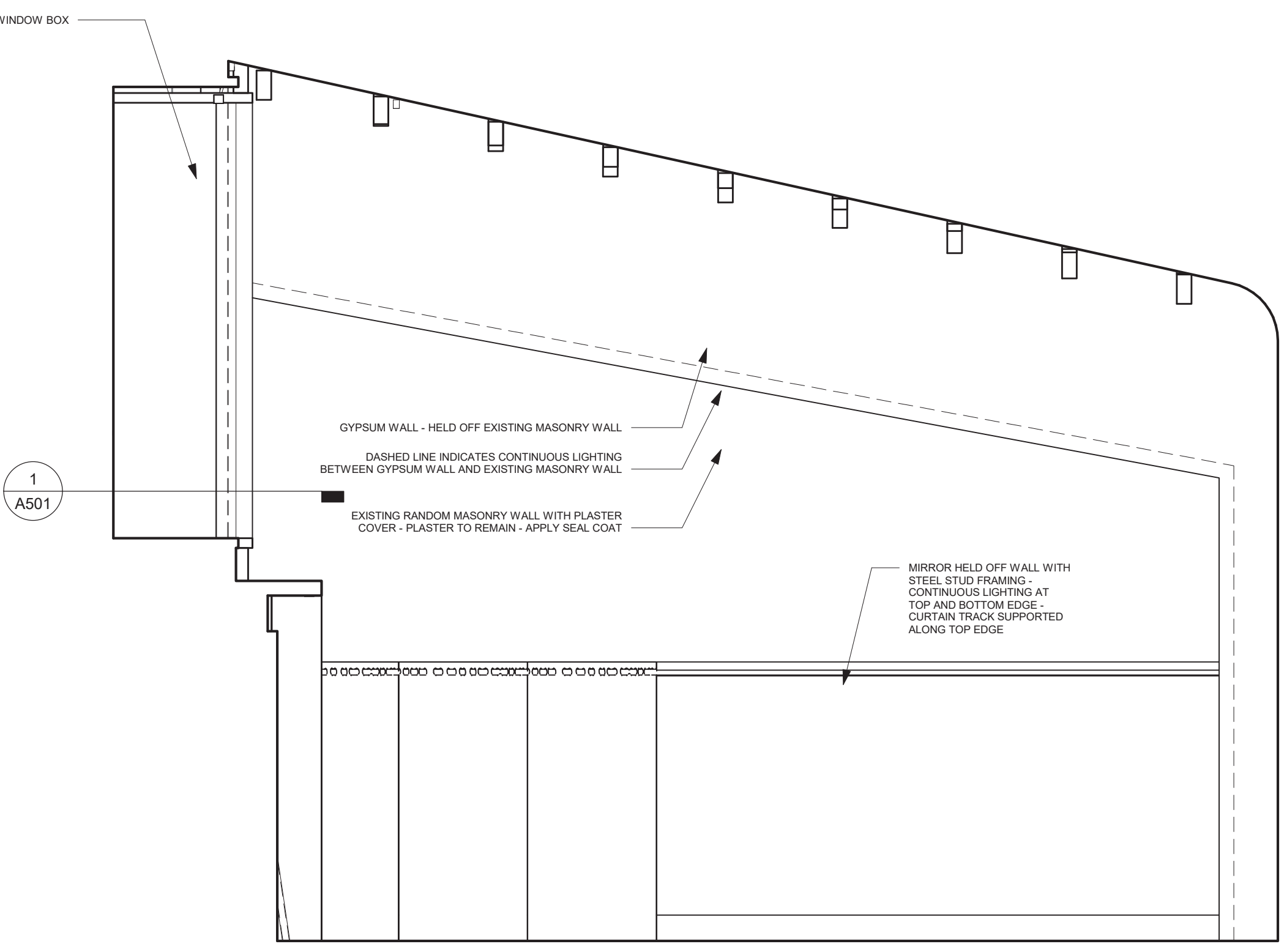
12 REHERSAL - EAST
1/4" = 1'-0"



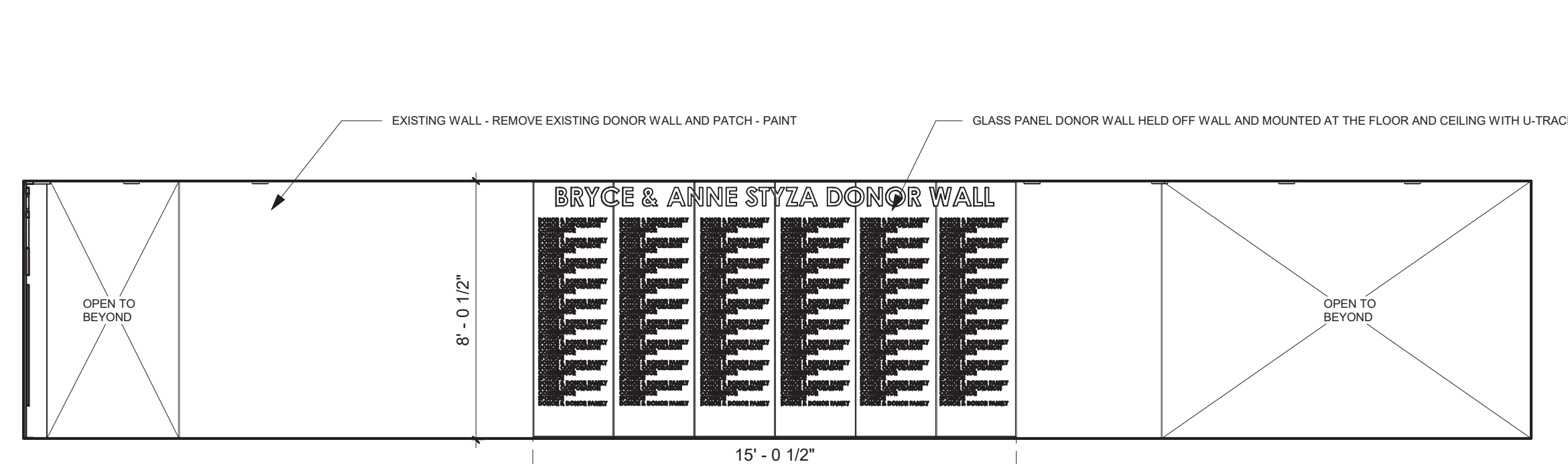
11 REHERSAL - SOUTH
1/4" = 1'-0"



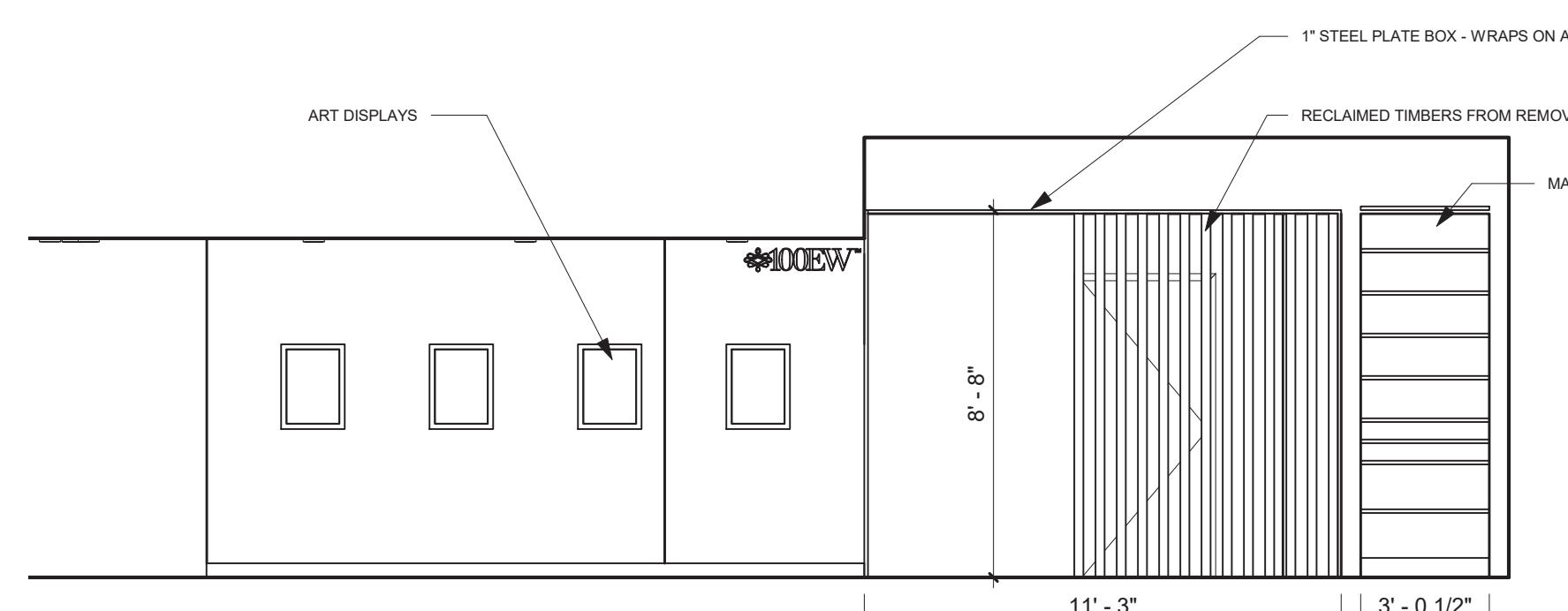
10 REHERSAL - WEST
1/4" = 1'-0"



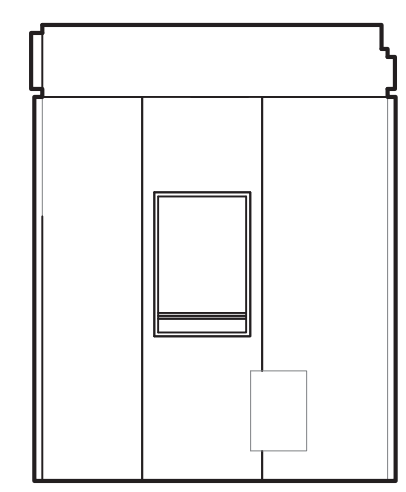
9 REHERSAL - NORTH
1/4" = 1'-0"



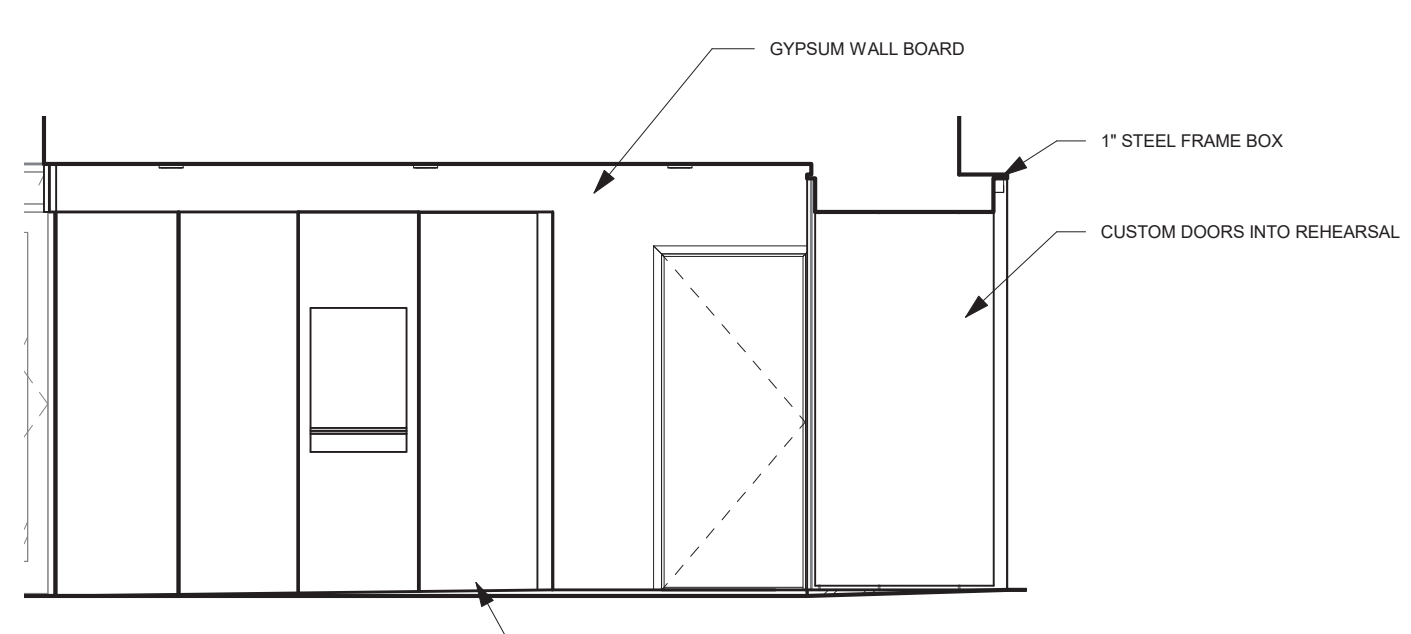
8 LOBBY - WEST
1/4" = 1'-0"



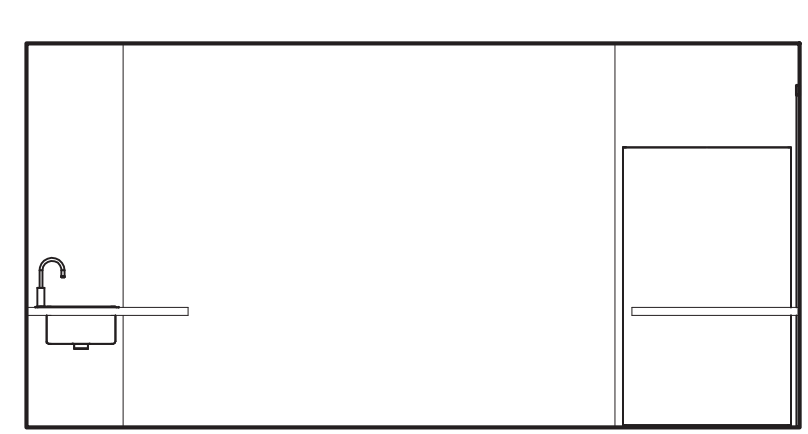
7 LOBBY - SOUTH
1/4" = 1'-0"



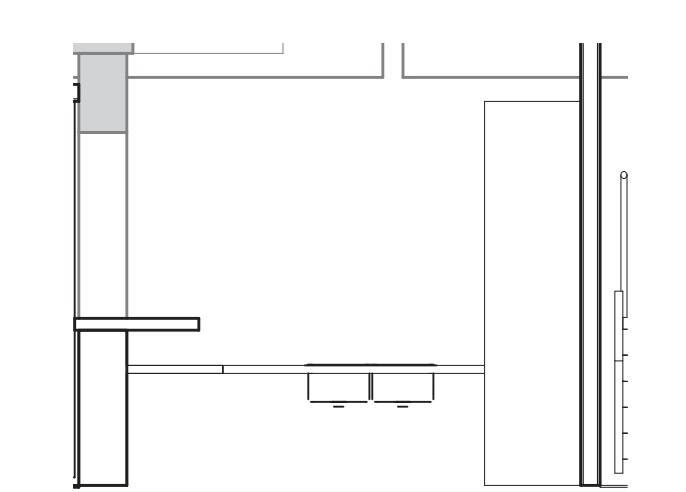
14 INTERIOR ELEVATION - VESTIBULE NORTH
1/4" = 1'-0"



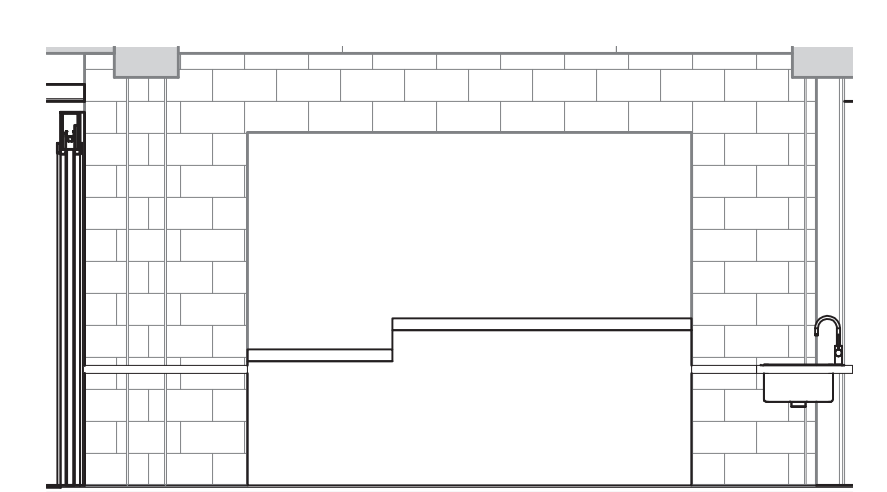
6 TICKET WINDOW - EAST
1/4" = 1'-0"



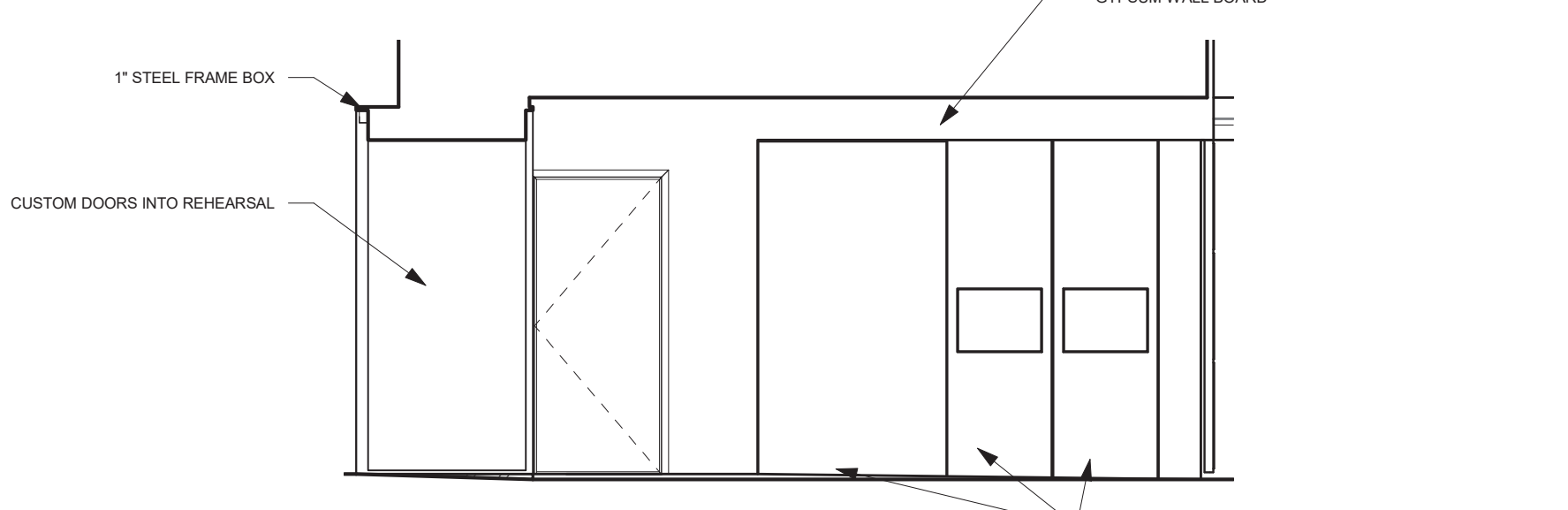
5 CONCESSIONS INTERIOR - NORTH
1/4" = 1'-0"



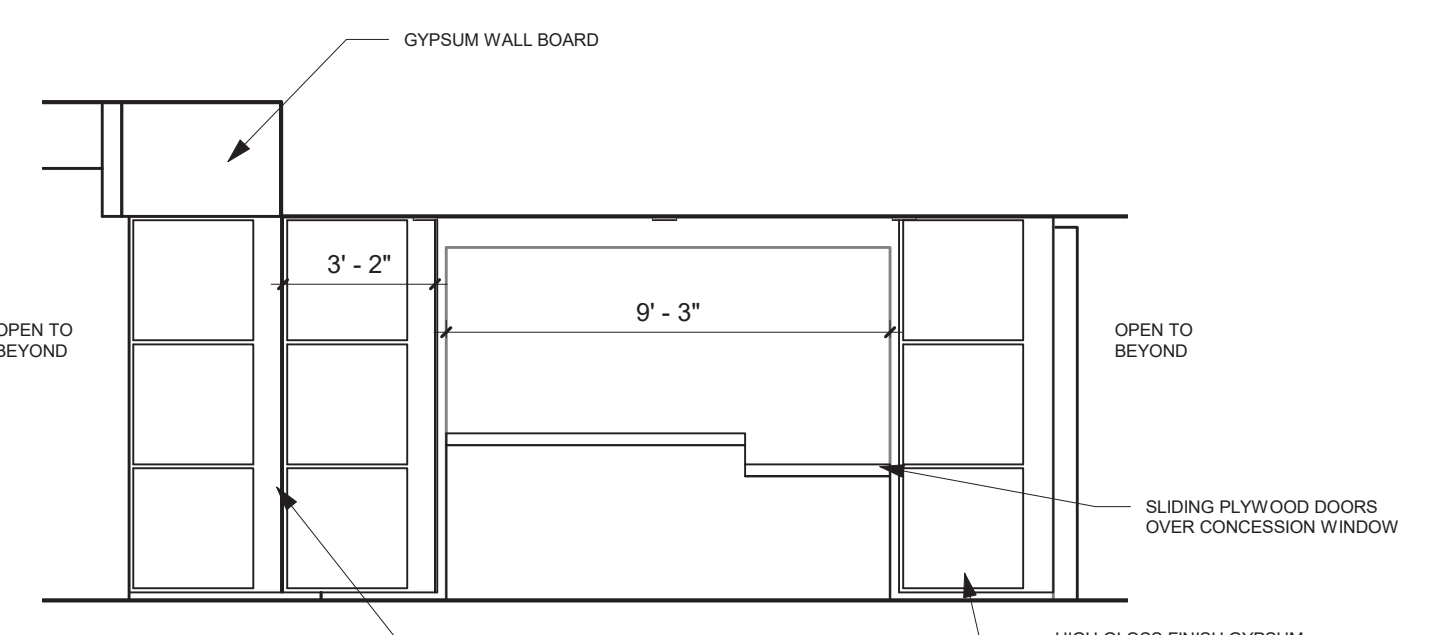
4 CONCESSIONS INTERIOR - WEST
1/4" = 1'-0"



3 CONCESSIONS INTERIOR - SOUTH
1/4" = 1'-0"



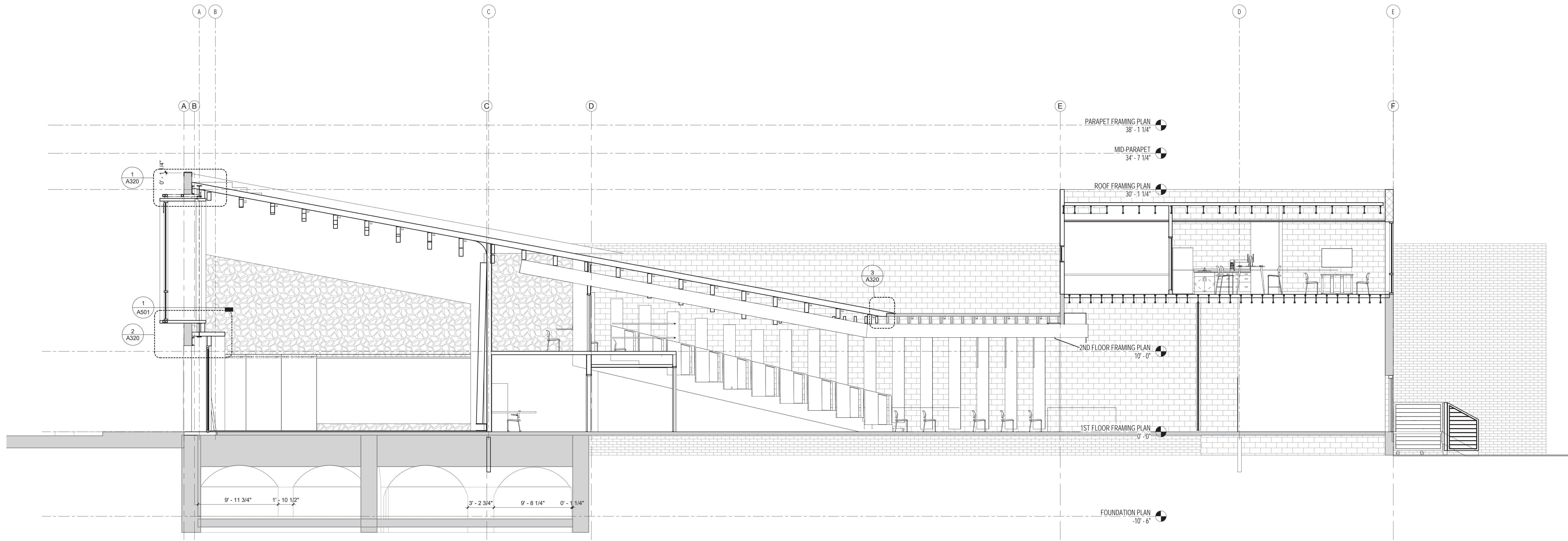
2 CONCESSIONS - WEST
1/4" = 1'-0"



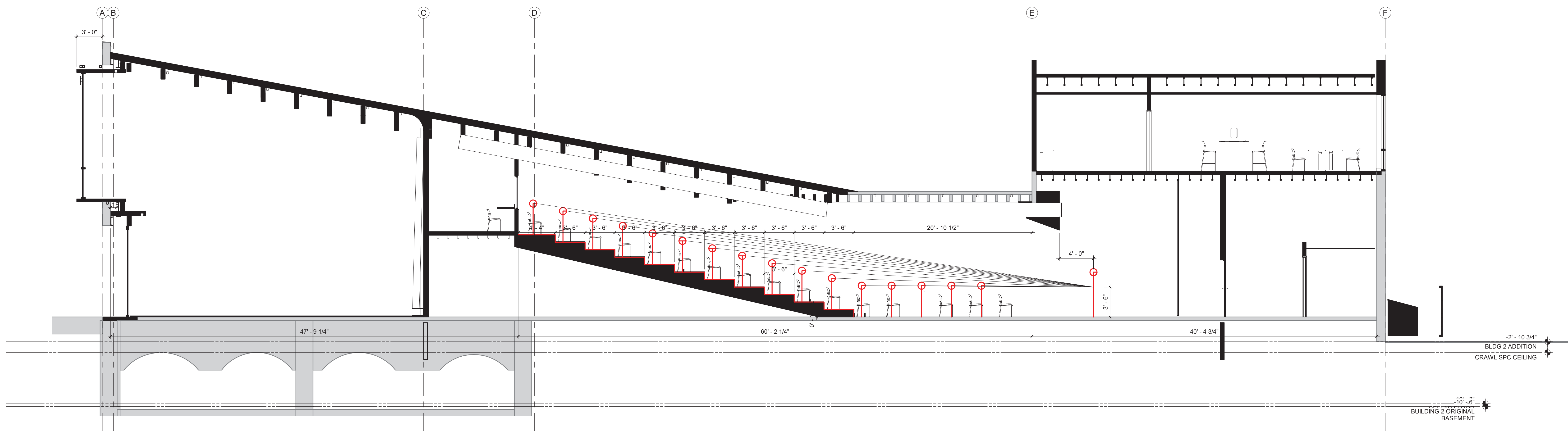
1 CONCESSIONS - SOUTH
1/4" = 1'-0"

PRELIMINARY. NOT FOR CONSTRUCTION.

PRINTED: 9/21/2021 5:30:48 PM



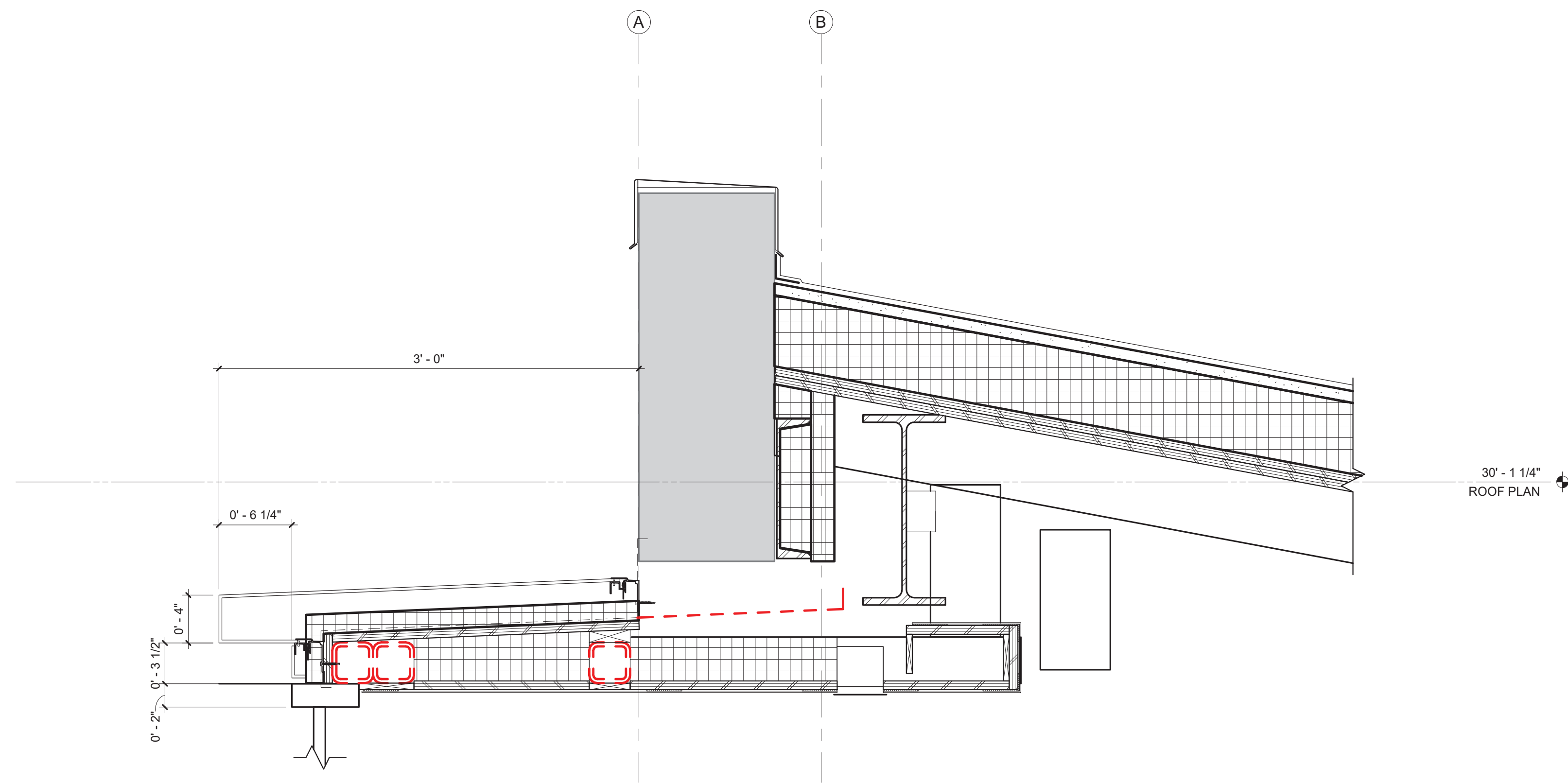
1 Section 24
3/16" = 1'-0"



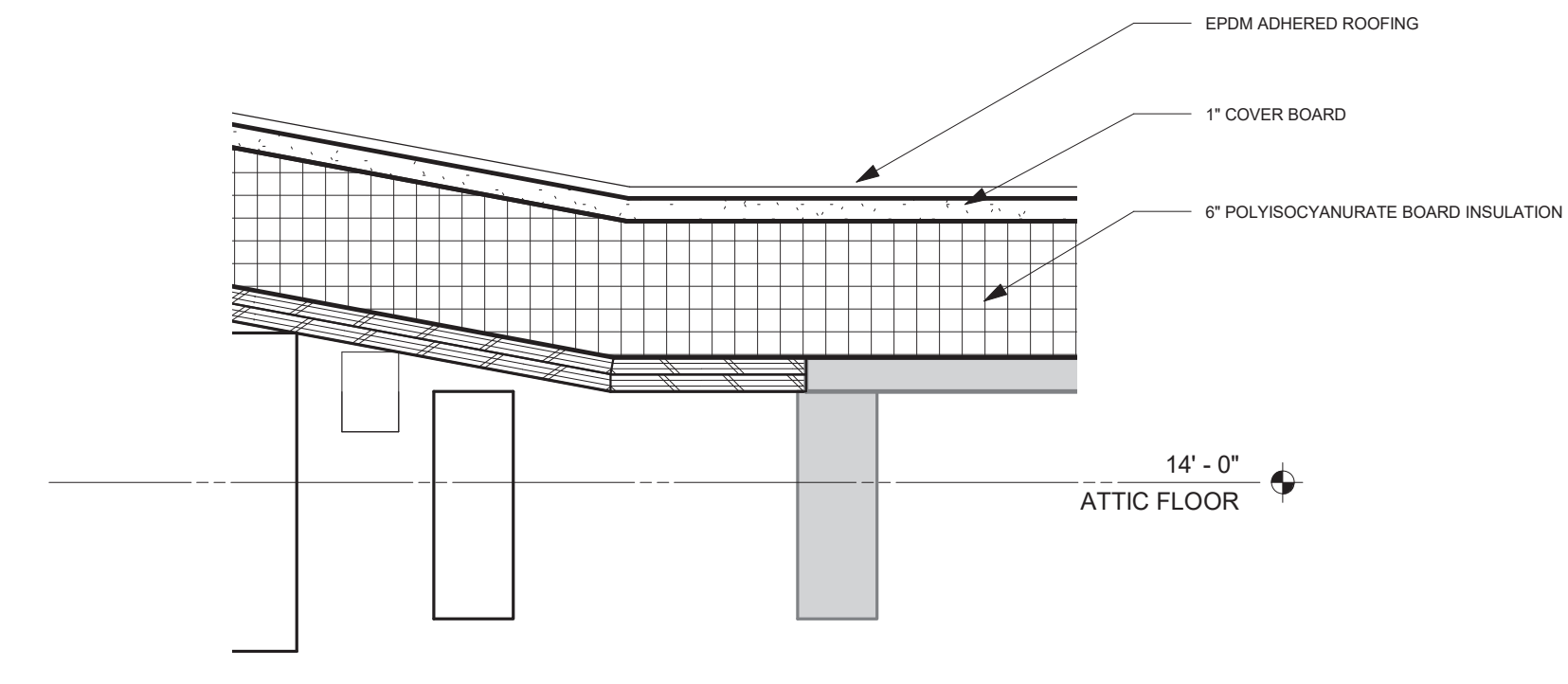
2 Section 12
3/16" = 1'-0"

PRELIMINARY. NOT FOR CONSTRUCTION.

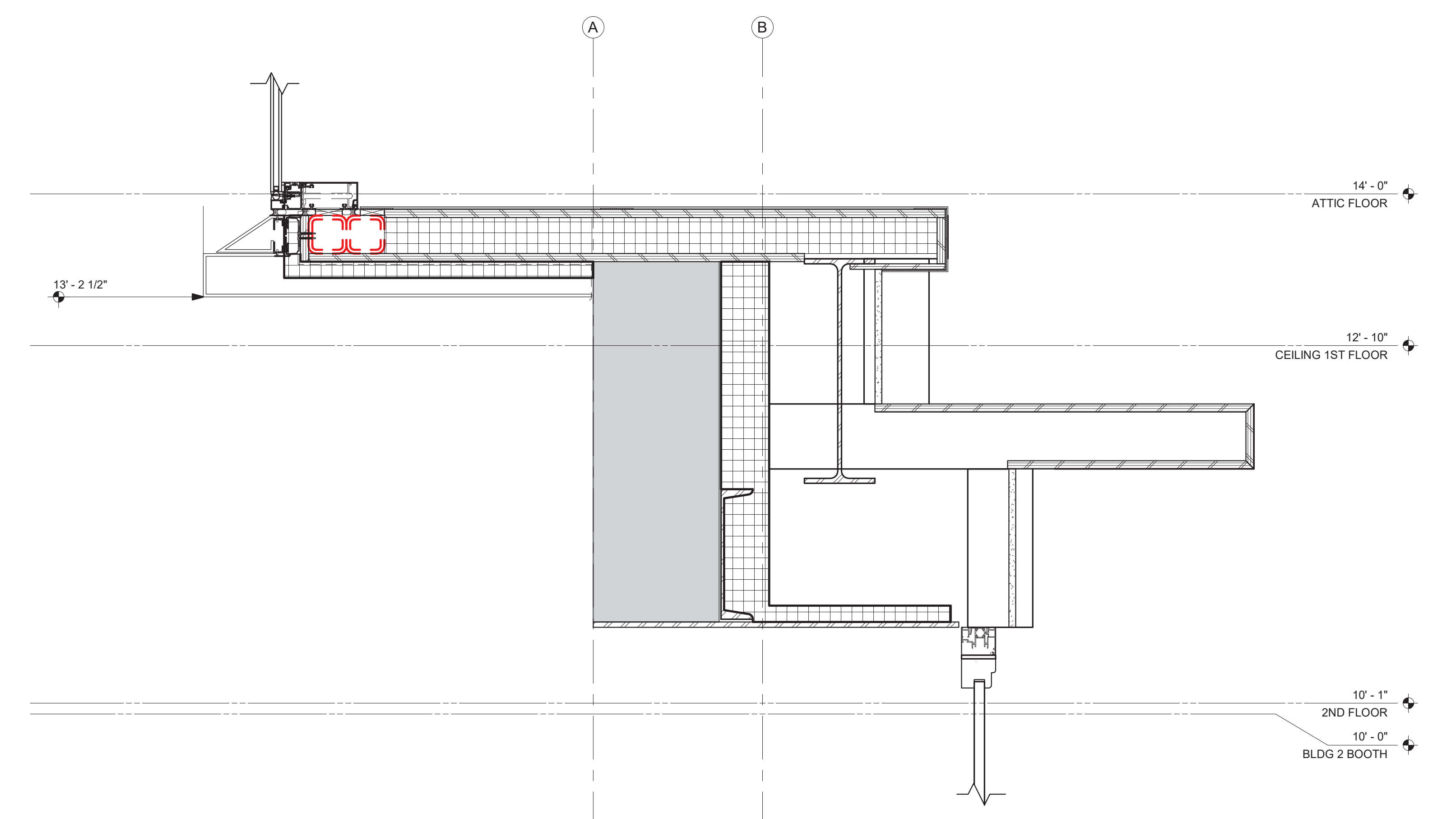
PRINTED: 9/21/2021 5:30:48 PM



1 SECTION DETAIL - HEAD OF PORTAL WINDOW
 1 1/2" = 1'-0"



3 Section 24 - Callout 1
 1 1/2" = 1'-0"



2 SECTION DETAIL - SILL OF PORTAL WINDOW
 1 1/2" = 1'-0"

PRELIMINARY. NOT FOR CONSTRUCTION.