

BUILDING ALTERATION / BUILDING ADDITION FOR: BGS GLASS SERVICES

WAUKESHA, WISCONSIN

PROJECT TEAM

OWNER BGS GLASS SERVICES

W314S7944 HIGHVIEW CIRCLE PROJECT CONTACT: SHANNON WILLIAMS
MUKWONAGO, WI 53149
PHONE: 262-513-2806

GENERAL CONTRACTOR FORD CONSTRUCTION CO.

1419 POPLAR DRIVE PROJECT CONTACT: JIM WARZINSKI
WAUKESHA, WI 53188 CELL PHONE: 970-903-6639
PHONE: 262-896-9370 EMAIL ADDRESS: jim@fordconstructioninc.com
FAX: 262-896-9371

ARCHITECTURAL MORPH DESIGNS, LLC

W10953 DEAD END ROAD PROJECT CONTACT: ROGER SCHREGARDUS
WAUPUN, WI 53963 CELL PHONE: (920) 948-7975
EMAIL ADDRESS: cadmanroger@sbcglobal.net

STRUCTURAL / SUPERVISING PROFESSIONAL TBD

TBD

CIVIL ENGINEERING ELLENA ENGINEERING CONSULTANTS, LLC

700 PILGRIM PARKWAY, SUITE 100 PROJECT CONTACT: MARK ELLENA
ELM GROVE, WI 53122 DIRECT PHONE: (262) 719-6183
EMAIL ADDRESS: mellenae@ecceng.com

SHEET INDEX			
SHEET	DESCRIPTION	CITY SUBMITTAL FOR PLAN COMMISSION	
G-100	TITLE SHEET, PROJECT DATA	11-8-2018	
CIVIL ENGINEERING			
C100	SITE, PAVING, & DRAINAGE PLAN	11-6-2018	
L-101	LANDSCAPE PLAN		
LITE	LIGHTING PLAN		
ARCHITECTURAL			
A-100	FLOOR PLAN	11-8-2018	
A-200	EXTERIOR BUILDING ELEVATIONS	11-8-2018	
A-201	EXTERIOR BUILDING ELEVATIONS	11-8-2018	

SCOPE OF WORK:
BGS GLASS SERVICE IS A COMPANY THAT OFFERS A WIDE VARIETY OF CUSTOM GLASS REPAIR AND INSTALLATION SERVICES INCLUDING:
HOME WINDOW REPLACEMENT
CUSTOM FINISHED SHOWER DOORS
COMMERCIAL GLAZING
DECORATIVE GLASS
THERMOPANE REPLACEMENT
CABINET GLASS

THE EXISTING BUILDING IS A MIX OF RETAIL/SALES IN THE FRONT / SOUTH PORTION OF THE FACILITY. THE SHOP & STORAGE IS IN THE REAR / NORTH SIDE OF THE FACILITY. THIS ADDITION IS TO EXPAND THE SHOP & STORAGE AREA.

PROJECT DATA:

BUILDING CODE:

2015 INTERNATIONAL BUILDING CODE (IBC), USING WISCONSIN SPS 362 AMENDMENTS
2015 INTERNATIONAL EXISTING BUILDING CODE (IEBC), USING WISCONSIN SPS 366 AMENDMENTS
2015 INTERNATIONAL ENERGY CONSERVATION CODE (IECC), USING WISCONSIN SPS 363 AMENDMENTS
AMERICAN NATIONAL STANDARDS (ICC/ANSI A117.1-2009)

PLUMBING CODE:

WISCONSIN COMMERCIAL BUILDING CODE CHAPTER 81-84

MECHANICAL CODE:

2015 INTERNATIONAL MECHANICAL CODE

ELECTRICAL CODE:

NEC 2008

FIRE / LIFE SAFETY CODE:

NFPA-1 2015

BUILDING SIZE:

EXISTING BUILDING FOOTPRINT: 7,000 sqft
EXISTING BUILDING MEZZANINE: 913 sqft
NEW ADDITION FOOTPRINT: 4,505 sqft

TOTAL BUILDING FOOTPRINT: 11,505 sqft

PER TABLE 503 ALLOWABLE AREA: 12,000 sqft (2 STORIES USING F-1 OCCUPANCY)

BUILDING DATA:

COUNTY LOCATION: WAUKESHA
PROJECT TYPE: LEVEL 2 ALTERATION / ADDITION
REQUIRED SEPARATION: UNSEPARATED USES

CONSTRUCTION CLASSIFICATION:

PER IBC 602 -
NEW BUILDING: TYPE IIIB - METAL FRAME W/ COMBUSTIBLE INTERIOR & COMBUSTIBLE EXTERIOR FRAMING, 1 STORY WITH COMPLETE, NFPA 13 AUTOMATIC SPRINKLER SYSTEM

OCCUPANCY CLASSIFICATION:

PER IBC 311 -
BUILDING - F-1 FACTORY, S-1 STORAGE, B BUSINESS (ACCESSORY USE)

EXIT DISTANCE:

PER IBC TABLE 1016.1 - 250 FT. DISTANCE (SPRINKLERED BUSINESS / S-1 STORAGE)
IBC 1014.3 COMMON PATH OF TRAVEL - 100'-0" (SPRINKLERED BUSINESS / S-1 STORAGE)
IBC 1018.4 DEAD ENDS - 50'-0" (SPRINKLERED BUSINESS / S-1 STORAGE)

ENVELOPE COMPLIANCE ENERGY CODE USED:

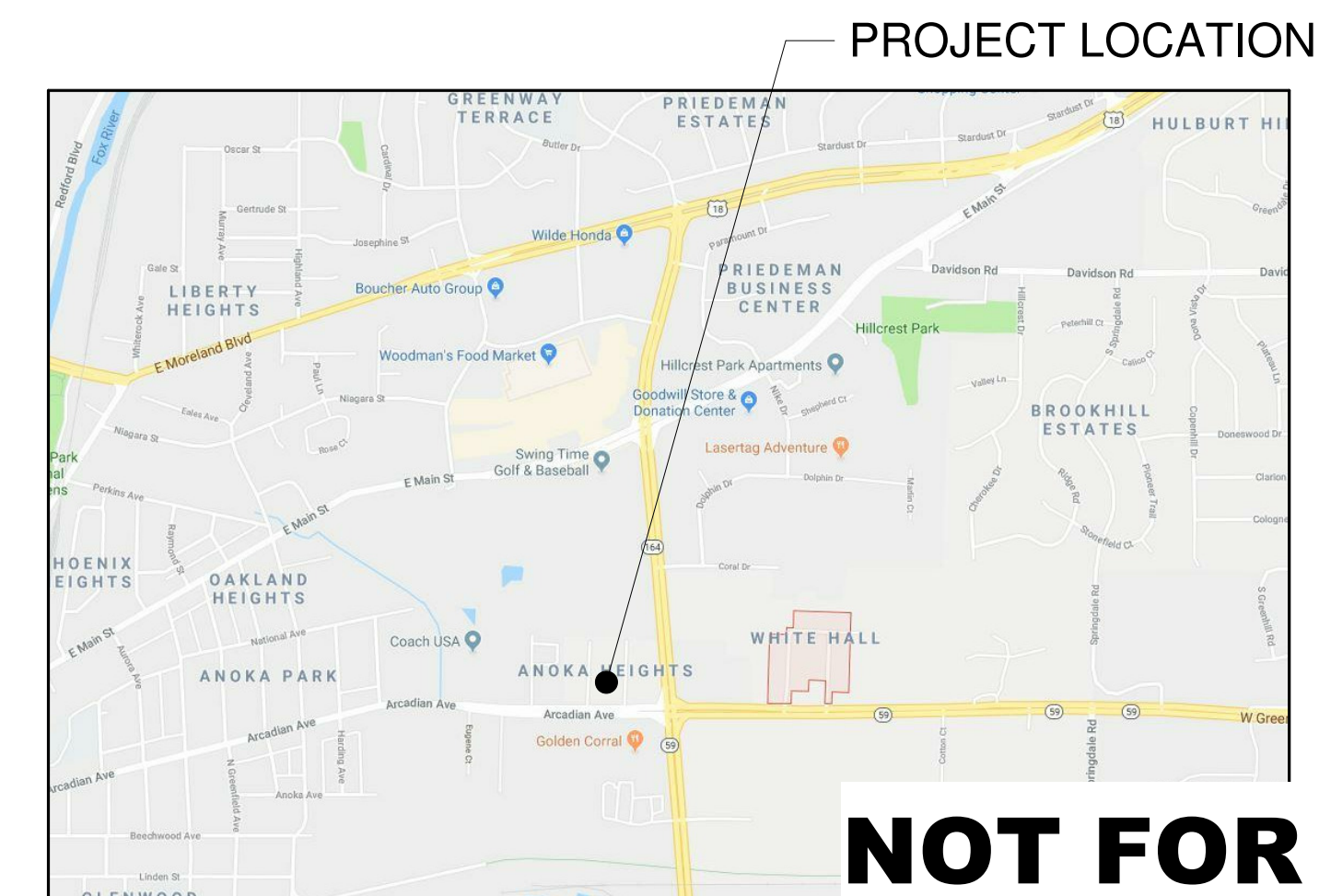
90.1 (2013) ASHRAE STANDARD
2015 INTERNATIONAL ENERGY CONSERVATION CODE (IECC), USING WISCONSIN SPS 363 AMENDMENTS

TOILETS:

MEN's - () WC () LAV () URINAL
WOMEN's - () WC () LAV

MOP SINK
DRINKING FOUNTAINS (HI-LOW)

LOCATION MAP



NOT FOR CONSTRUCTION



MORPH DESIGNS, LLC
Commercial & Residential
Building & Structural
Design Services
Phone: 920-948-7975
morphdesigns@sbcglobal.net

1419 POPLAR DRIVE
WAUKESHA, WI 53188-5976
262-896-9370
info@fordconstructioninc.com

PRELIMINARY

11-8-2018

BGS GLASS SERVICE
NEW BUILDING ADDITION
1620 ARCADIAN AVENUE
WAUKESHA, WI 53186

SHEET TITLE

TITLE SHEET, PROJECT DATA

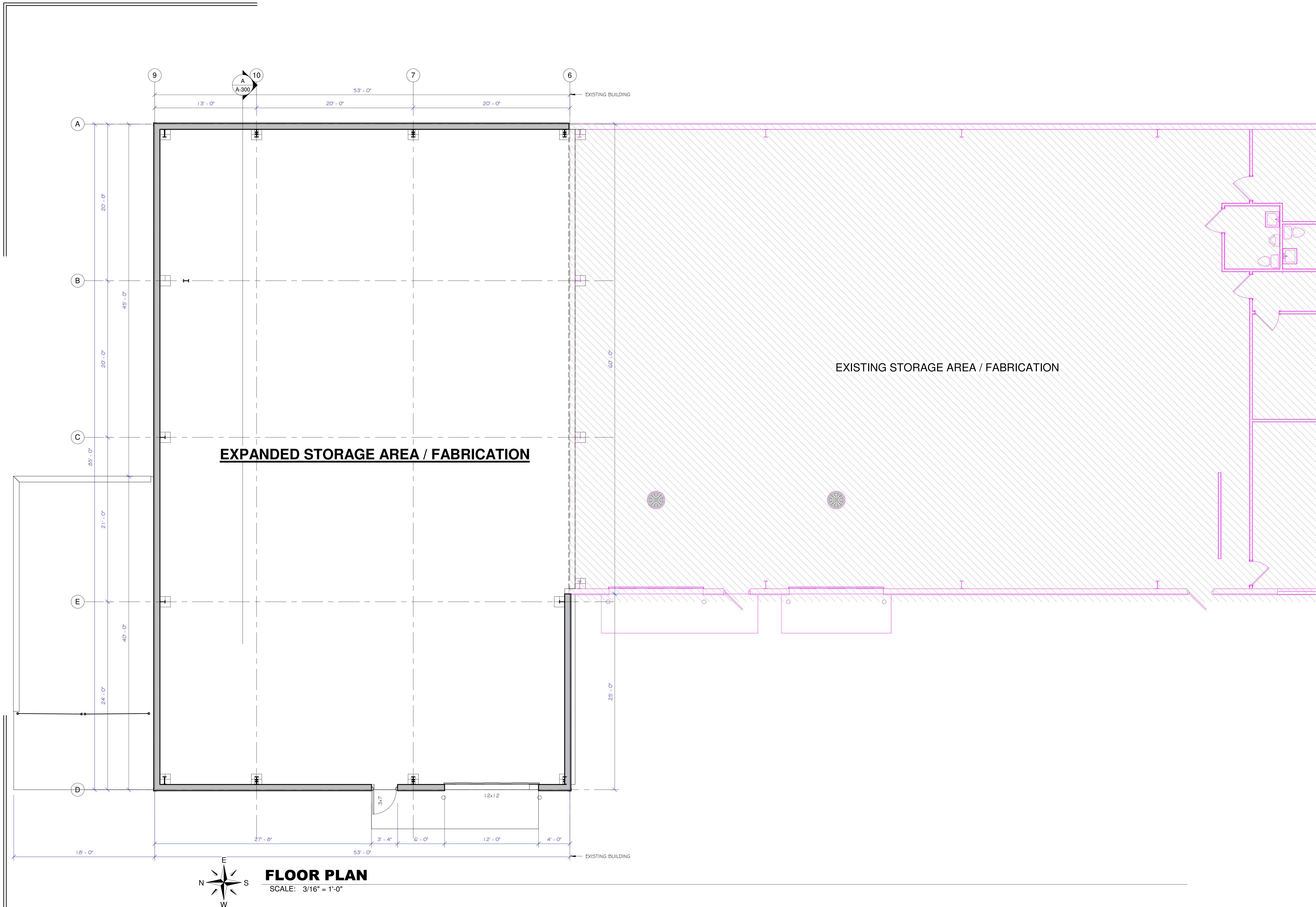
PROJECT DATA

DATE:

JOB NUMBER:
FORD-BGS

SHEET NUMBER:

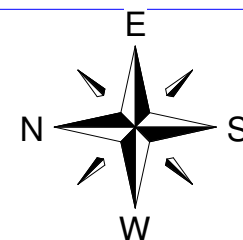
G-100



EXPANDED STORAGE AREA / FABRICATION

EXISTING STORAGE AREA / FABRICATION

FLOOR PLAN
SCALE: 3/16" = 1'-0"



FORD CONSTRUCTION
1419 POPLAR DRIVE
WAUKESHA, WI 53188-5976
262-896-9370
info@fordconstructioninc.com

MORPH DESIGNS, LLC
Commercial & Residential
Building & Structural
Design Services
Phone: 920-948-7975
morphdesigns@sbcglobal.net

PRELIMINARY
11-8-2018

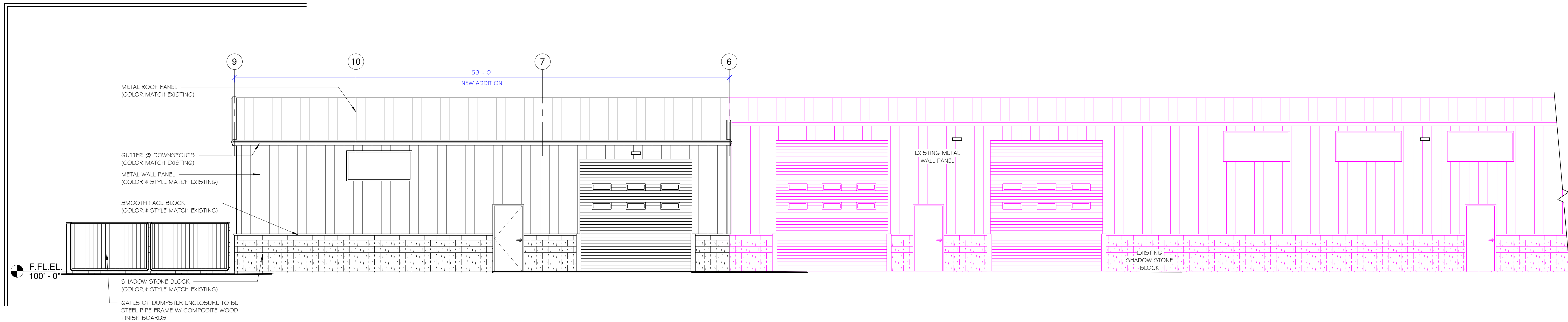
BGS GLASS SERVICE
NEW BUILDING ADDITION
1620 ARCADIAN AVENUE
WAUKESHA, WI 53186

SHEET TITLE
FLOOR PLAN

PROJECT DATA
DATE:
JOB NUMBER: FORD-BGS
SHEET NUMBER:

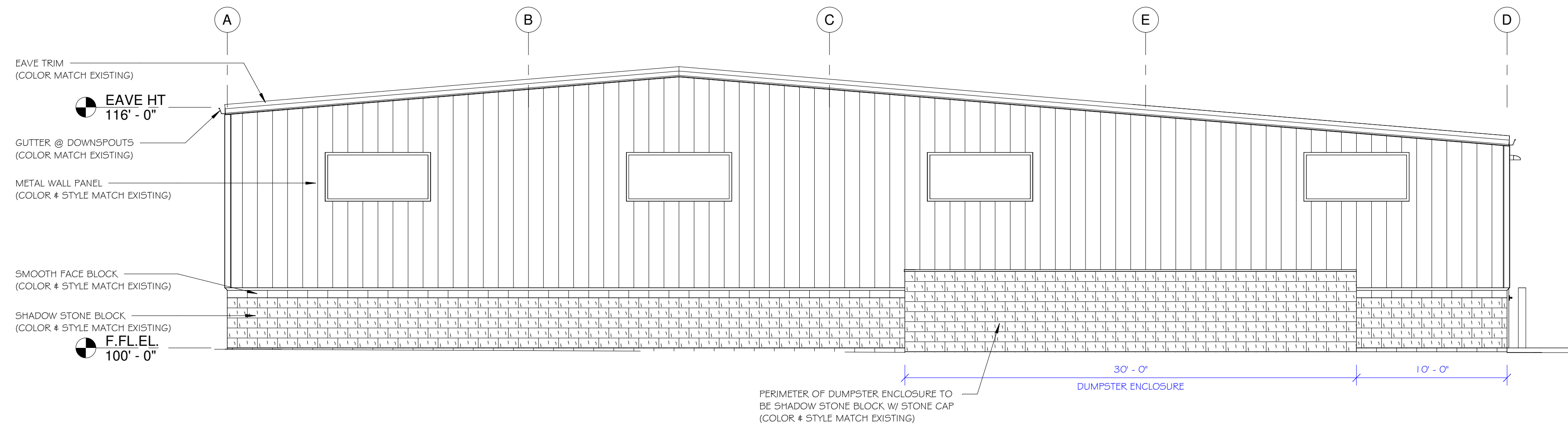
NOT FOR CONSTRUCTION A-100

-COPYRIGHT NOTICE- ©
THIS IS A COPYRIGHTED PLAN AND IS THE EXCLUSIVE
PROPERTY OF MORPH DESIGNS, LLC. IT MAY NOT BE USED,
BUILT FROM, OR REPRODUCED IN ANY FORM WITHOUT THE
WRITTEN PERMISSION OF MORPH DESIGNS, LLC.



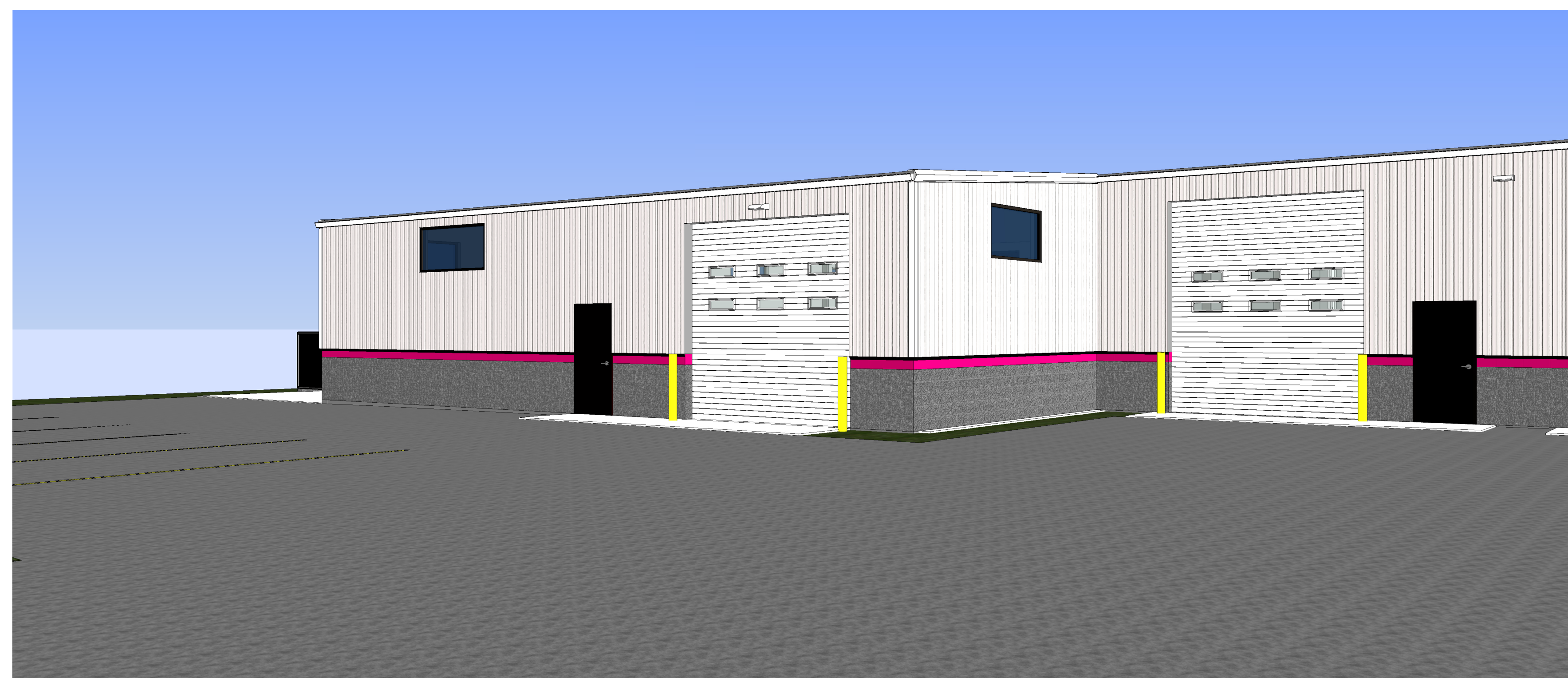
WEST BUILDING ELEVATION

SCALE: 3/16" = 1'-0"



NORTH BUILDING ELEVATION

SCALE: 3/16" = 1'-0"



MORPH DESIGNS, LLC
 Commercial & Residential
 Building & Structural
 Design Services
 Phone: 920-948-7975
 morphdesigns@sbcglobal.net

1419 POPLAR DRIVE
 WAUKESHA, WI 53188-5976
 262-896-9370
 info@fordconstructioninc.com

PRELIMINARY
11-8-2018

BGS GLASS SERVICE
NEW BUILDING ADDITION
 1620 ARCADIAN AVENUE
 WAUKESHA, WI 53186

SHEET TITLE
EXTERIOR BUILDING ELEVATIONS

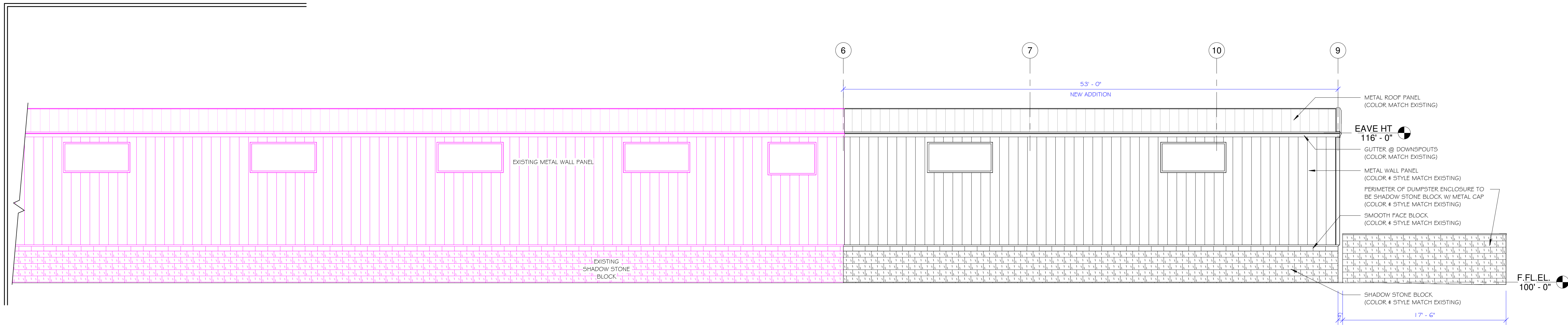
PROJECT DATA
DATE:
JOB NUMBER: FORD-BGS
SHEET NUMBER:

A-200

-COPYRIGHT NOTICE- ©
 THIS IS A COPYRIGHTED PLAN AND IS THE EXCLUSIVE
 PROPERTY OF MORPH DESIGNS, LLC. IT MAY NOT BE USED,
 BUILT FROM, OR REPRODUCED IN ANY FORM WITHOUT THE
 WRITTEN PERMISSION OF MORPH DESIGNS, LLC.

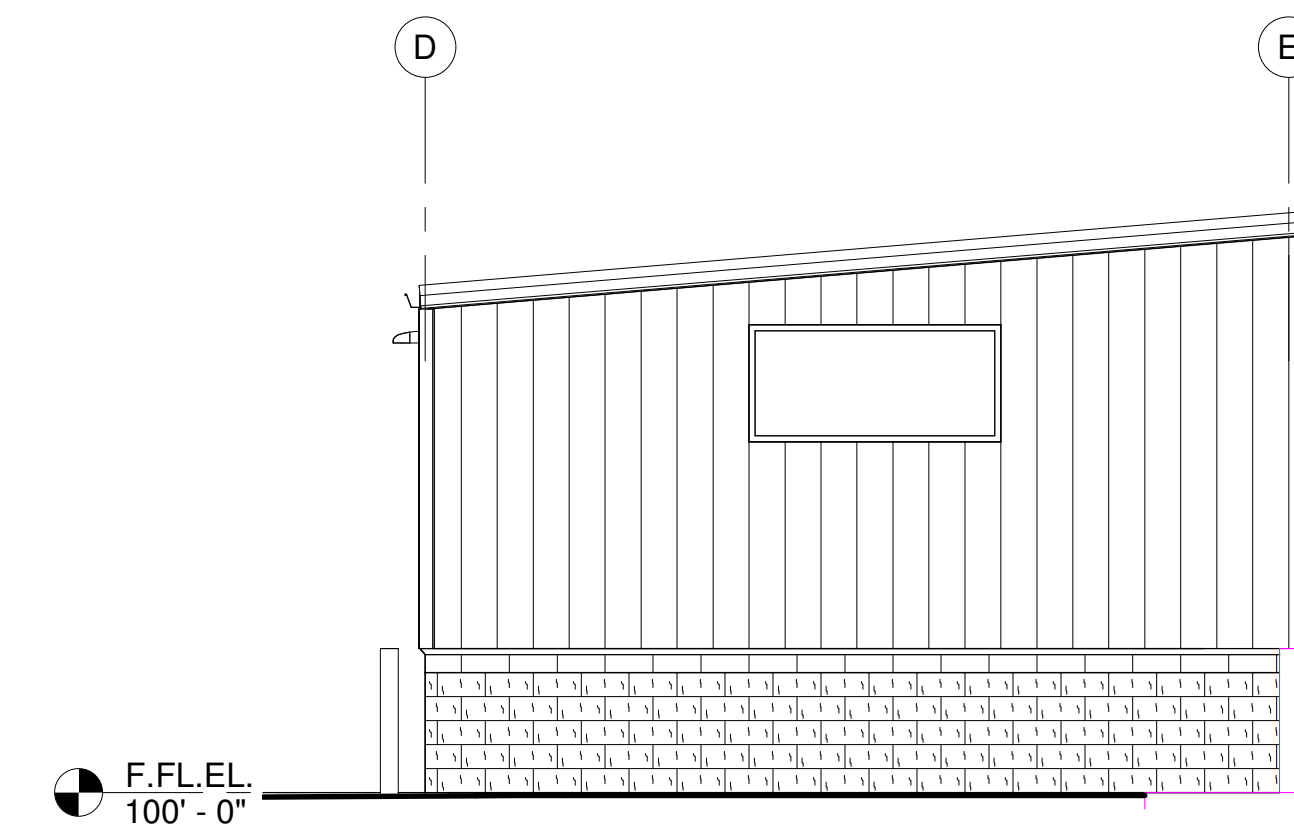
NOT FOR CONSTRUCTION

11/8/2018 5:22:02 PM



EAST BUILDING ELEVATION

SCALE: 3/16" = 1'-0"



SOUTH BUILDING ELEVATION

SCALE: 3/16" = 1'-0"



1419 POPLAR DRIVE
WAUKESHA, WI 53188-5976
262-896-9370
info@fordconstructioninc.com

MORPH DESIGNS, LLC

Commercial & Residential
Building & Structural
Design Services
Phone: 920-948-7975
morphdesigns@sbcglobal.net

PRELIMINARY

11-8-2018

BGS GLASS SERVICE
NEW BUILDING ADDITION
1620 ARCADIAN AVENUE
WAUKESHA, WI 53186

SHEET TITLE

EXTERIOR BUILDING ELEVATIONS

PROJECT DATA

DATE:

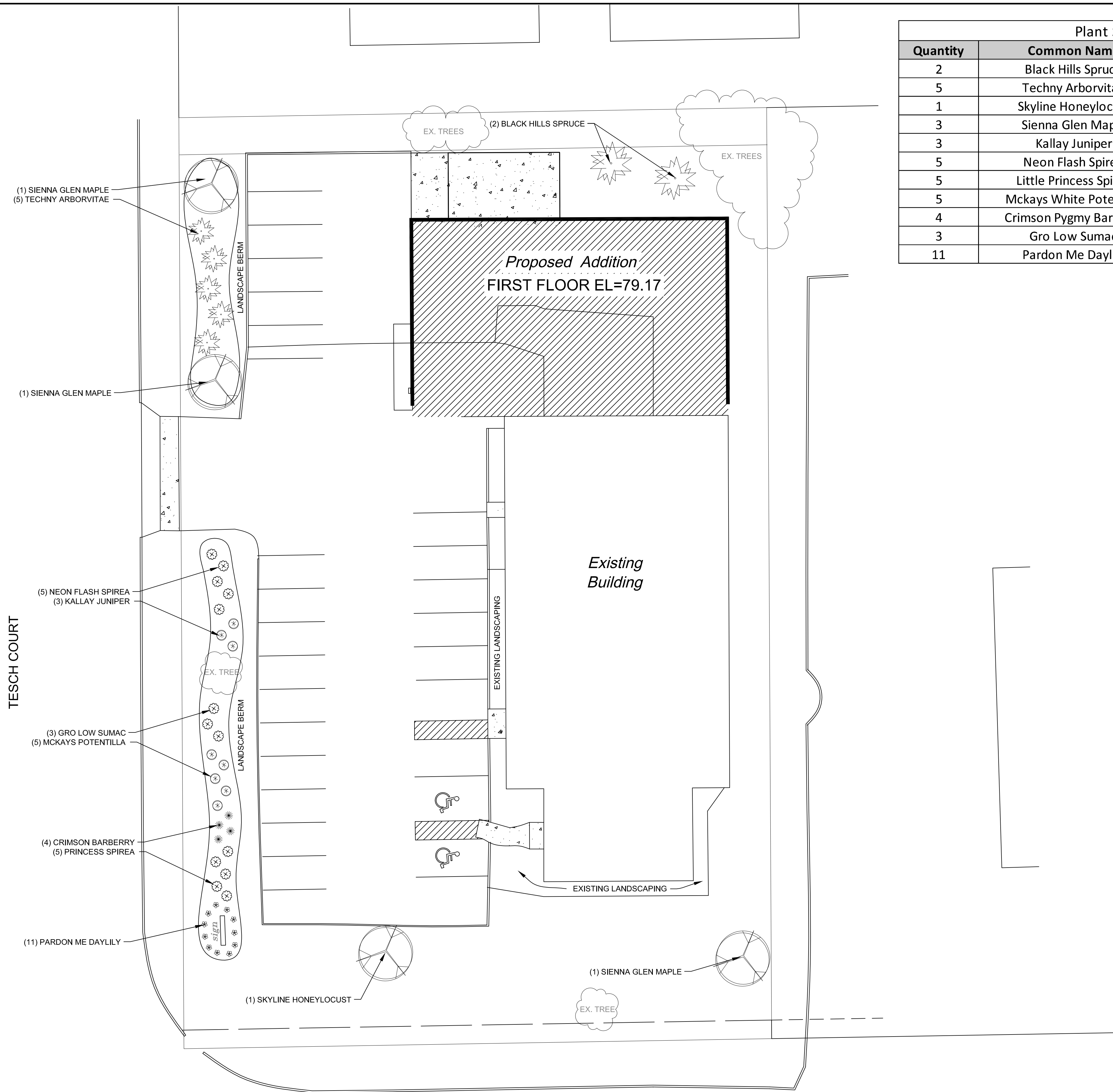
JOB NUMBER:

FORD-BGS

SHEET NUMBER:

NOT FOR CONSTRUCTION

A-201



Plant Schedule			
Quantity	Common Name	Size	Root
2	Black Hills Spruce	6-7' ht.	B&B
5	Techny Arborvitae	5-6 ht.	B&B
1	Skyline Honeylocust	2" cal.	B&B
3	Sienna Glen Maple	2" cal.	B&B
3	Kallay Juniper	18"	Container
5	Neon Flash Spirea	18"	Container
5	Little Princess Spirea	18"	Container
5	Mckays White Potentilla	18"	Container
4	Crimson Pygmy Barberry	18"	Container
3	Gro Low Sumac	18"	Container
11	Pardon Me Daylily	1 gal.	Container



**HANSON'S
LANDSCAPING**

101 DAIRY AVE.
WAUKESHA, WI 53188

PH: (262) 271-8765
FAX: (262) 574-9288

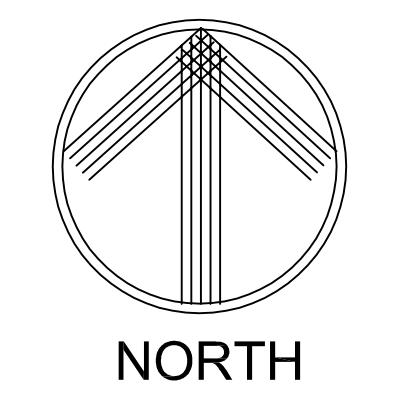
www.hansonlandscaping.com
hansonlandscapinginc@gmail.com

Copyright © 2017 Hanson Contractors Inc.
dba Hanson's Landscaping
This landscape design is the sole property of
Hanson's Landscaping and may not be
reproduced, altered, or copied in any manner or
form without permission of Hanson's Landscaping.
This plan may not be used for bidding purposes
without prior consent by Hanson's Landscaping.

DESIGN FOR:

BGS GLASS SERVICE
1620 ARCADIAN AVE.
WAUKESHA, WI 53186

SCALE: 1" = 15'

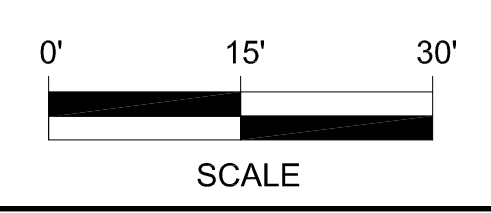


DATE:
11/11/18

DRAWN BY:
JLH

CHECKED BY:
JLH

SHEET TITLE:
LANDSCAPING PLAN



ARCADIAN AVENUE

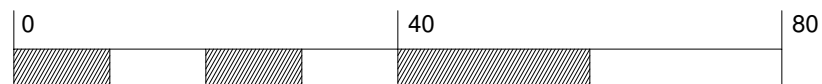


Luminaire Schedule							
Symbol	Qty	Label	Arrangement	Lumens/Lamp	LLF	Description	Lum. Watts
▶	1	XSPW 2	SINGLE	4109	1.010	XSPW-A-0-2-M-C-U-x-x	42
▶	3	XSPW 3	SINGLE	4109	1.010	XSPW-A-0-3-M-C-U-x-x	42

*** Fixtures mounted at 15' (on the wall)

Footcandles calculated using predicted lumen values after 50K hours of operation					
Label	Avg	Max	Min	Avg/Min	Max/Min
CalcPts	0.63	4.6	0.0	N.A.	N.A.

*DLC V4 is in effect as of April 1, 2017,
 which impacts the rebate eligibility of many LED products.
 If you require DLC-qualified fixtures,
 please reference <https://www.designlights.org/search/>
 for updated qualified product listings.
 Email rebates@cree.com for assistance."



Customer responsible to verify mounting method, color, voltage, accessories, ordering information, catalogue number, etc. prior to placing order.



1200 92nd Street - Sturtevant, WI 53177
 www.cree.com - (800) 236-6800

Project Name: BGS Glass - 1620 Arcadian, Waukesha, WI SR28744

Date: 2/27/2018 Scale: 1"=20' Footcandles calculated at grade

Filename: S:\Out\180220EN1BRSR2.AGI Layout by: Bill Schubert

illumination results shown on this lighting design are based on project parameters provided to Cree, Inc. used in conjunction with luminaire test procedures conducted under laboratory conditions. Actual project conditions differing from these design parameters may affect field results. The customer is responsible for verifying dimensional accuracy along with compliance with any applicable electrical, lighting, or energy code.

XSP Series

XSPW™ LED Wall Mount Luminaire

Product Description

The XSPW™ LED wall mount luminaire has a slim, low profile design intended for outdoor wall mounted applications. The rugged lightweight aluminum housing and mounting box are designed for installation over standard single gang J-Boxes and mud ring single gang J-Boxes. The luminaire allows for through-wired or conduit entry from the top, bottom, sides and rear. The housing design is intended specifically for LED technology including a weathertight LED driver compartment and thermal management. Optic design features industry-leading NanoOptic® Precision Delivery Grid™ system in multiple distributions.

Applications: General area and security lighting

Performance Summary

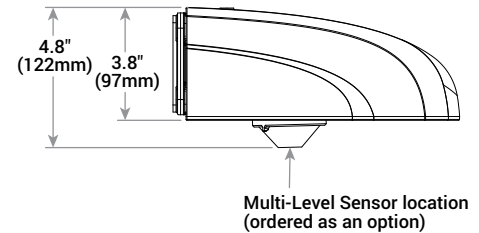
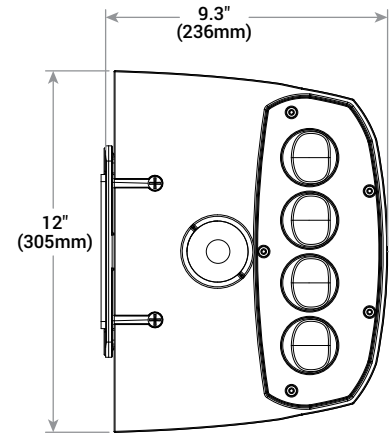
NanoOptic® Precision Delivery Grid™ optic
Made in the U.S.A. of U.S. and imported parts
CRI: Minimum 70 CRI
CCT: 4000K (+/- 300K), 5700K (+/- 500K)
Limited Warranty*: 10 years on luminaire/10 years on Colorfast DeltaGuard® finish

* See www.cree.com/lighting/products/warranty for warranty terms

Accessories

Field-Installed
Beauty Plate WM-PLT12** - 12" (305mm) Square WM-PMT14** - 14" (356mm) Square - Covers holes left by incumbent wall packs

** Must specify color



Weight
9.5 lbs. (4.3kg)

Ordering Information

Example: XSPW-A-0-2-F-C-U-Z

XSPW	A	0						
Product	Version	Mounting	Optic	Modules	Input Power Designator	Voltage	Color Options	Options
XSPW	A	0 Wall	2 Type II Medium 3 Type III Medium	F 4000K M 5700K	C 42W G 25W	U Universal 120-277V 1 120V 2 208-277V 6* 347V	S Silver T Black W White Z Bronze	K Multi-Level - Refer to ML spec sheet for details - Available with Input Power Designator C only P Photocell - Not available with K option - Must specify 1, 2, or 6 voltage Y 0-10V Dimming - Control by others - Available with Input Power Designator C only - Refer to dimming spec sheet for details

* Available in Canada only
 NOTE: Price adder may apply depending on configuration



Rev. Date: V6 07/31/2015



US: www.cree.com/lighting

T (800) 236-6800 F (262) 504-5415

Canada: www.cree.com/canada

T (800) 473-1234 F (800) 890-7507

Product Specifications

CONSTRUCTION & MATERIALS

- Slim, low profile design
- Luminaire housing specifically designed for LED applications with advanced LED thermal management and driver
- Luminaire mounting box designed for installation over standard single gang J-Boxes and mud ring single gang J-Boxes
- Luminaire can also be direct mounted to a wall and surface wired
- Secures to wall with four 3/16" (5mm) screws (by others)
- Conduit entry from top, bottom, sides, and rear
- Designed and UL approved for easy through-wiring
- Designed for downlight applications only
- Exclusive Colorfast DeltaGuard® finish features an E-coat epoxy primer with an ultra-durable powder topcoat, providing excellent resistance to corrosion, ultraviolet degradation and abrasion. Silver, black, white and bronze are available
- **Weight:** 9.5lbs. (4.3kg)

ELECTRICAL SYSTEM

- **Input Voltage:** 120-277V or 347V, 50/60Hz, Class 2 driver
- **Power Factor:** > 0.9 at full load
- **Total Harmonic Distortion:** < 20% at full load
- Integral 10kV surge suppression protection standard
- To address inrush current, slow blow fuse or type C/D breaker should be used
- **10V Source Current:** 0.15 mA

REGULATORY & VOLUNTARY QUALIFICATIONS

- cULus Listed
- Suitable for wet locations
- Enclosure rated IP66 per IEC 60529
- DLC qualified. Please refer to www.designlights.org/QPL for most current information
- 10kV surge suppression protection tested in accordance with IEEE/ANSI C62.41.2
- Meets FCC Part 15 standards for conducted and radiated emissions
- Luminaire and finish endurance tested to withstand 5,000 hours of elevated ambient salt fog conditions as defined in ASTM Standard B 117
- Meets Buy American requirements within ARRA
- RoHS compliant. Consult factory for additional details

Electrical Data*							
Input Power Designator	System Watts 120-277V	System Watts 347V	Total Current				
			120V	208V	240V	277V	347V
C	42	46	0.36	0.21	0.19	0.16	0.14
G	25	27	0.22	0.13	0.11	0.10	0.08

* Electrical data at 25°C (77°F)

Recommended XSPW Series Lumen Maintenance Factors (LMF) ¹						
Ambient	Input Power Designator	Initial LMF	25K hr Projected ² LMF	50K hr Projected ² LMF	75K hr Projected ² LMF	100K hr Calculated ³ LMF
5°C (41°F)	C	1.04	1.02	1.01	1.00	1.00
	G					
10°C (50°F)	C	1.03	1.01	1.00	0.99	0.99
	G					
15°C (59°F)	C	1.02	1.00	0.99	0.98	0.98
	G					
20°C (68°F)	C	1.01	0.99	0.98	0.97	0.97
	G					
25°C (77°F)	C	1.00	0.98	0.97	0.96	0.96
	G					

¹ Lumen maintenance values at 25°C (77°F) are calculated per TM-21 based on LM-80 data and in-situ luminaire testing

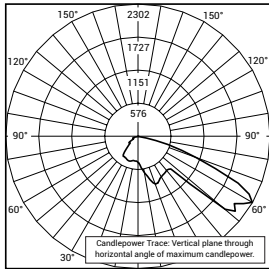
² In accordance with IESNA TM-21-11, Projected Values represent interpolated value based on time durations that are within six times (6X) the IESNA LM-80-08 total test duration (in hours) for the device under testing ((DUT) i.e. the packaged LED chip)

³ In accordance with IESNA TM-21-11, Calculated Values represent time durations that exceed six times (6X) the IESNA LM-80-08 total test duration (in hours) for the device under testing ((DUT) i.e. the packaged LED chip)

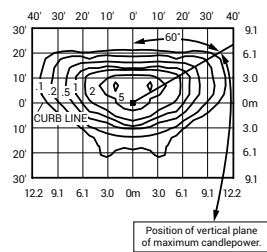
Photometry

All published luminaire photometric testing performed to IESNA LM-79-08 standards by a NVLAP accredited laboratory. To obtain an IES file specific to your project consult: www.cree.com/Lighting/Products/Outdoor/Wall-Mount/XSP-Series

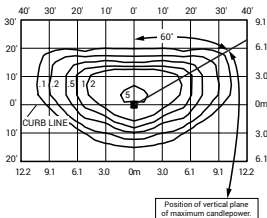
2



CESTL Test Report #: 2014-0017
 BXSPW-A*-2-F-G-U-S
 Initial Delivered Lumens: 2,739



BXSPW-A*-2-F-C-U-S
 Mounting Height: 10' (3.0m) A.F.G.
 Initial Delivered Lumens: 3,819
 Initial FC at grade

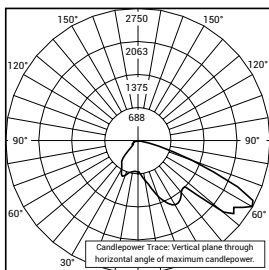


BXSPW-A*-2-F-G-U-S
 Mounting Height: 10' (3.0m) A.F.G.
 Initial Delivered Lumens: 2,529
 Initial FC at grade

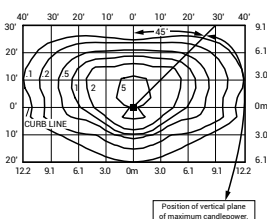
Type II Medium Distribution				
Input Power Designator	4000K		5700K	
	Initial Delivered Lumens*	BUG Ratings** Per TM-15-11	Initial Delivered Lumens*	BUG Ratings** Per TM-15-11
C	3,819	B1 U0 G1	4,109	B1 U0 G1
G	2,529	B1 U0 G1	2,722	B1 U0 G1

* Initial delivered lumens at 25°C (77°F)
 ** For more information on the IES BUG (Backlight-Uplight-Glare) Rating visit: www.ies.org/PDF/Erratas/TM-15-11BugRatingsAddendum.pdf.

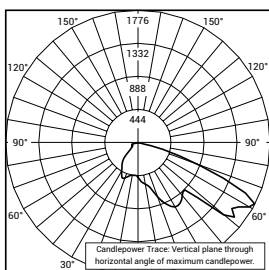
3



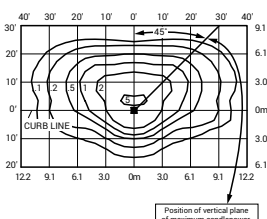
CESTL Test Report #: 2014-0018
 BXSPW-A*-3-F-G-U-S
 Initial Delivered Lumens: 4,187



BXSPW-A*-3-F-C-U-S
 Mounting Height: 10' (3.0m) A.F.G.
 Initial Delivered Lumens: 3,819
 Initial FC at grade



CESTL Test Report #: 2014-0019
 BXSPW-A*-3-F-G-U-S
 Initial Delivered Lumens: 2,692



BXSPW-A*-3-F-G-U-S
 Mounting Height: 10' (3.0m) A.F.G.
 Initial Delivered Lumens: 2,529
 Initial FC at grade

Type III Medium Distribution				
Input Power Designator	4000K		5700K	
	Initial Delivered Lumens*	BUG Ratings** Per TM-15-11	Initial Delivered Lumens*	BUG Ratings** Per TM-15-11
C	3,819	B1 U0 G1	4,109	B1 U0 G1
G	2,529	B1 U0 G1	2,722	B1 U0 G1

* Initial delivered lumens at 25°C (77°F)
 ** For more information on the IES BUG (Backlight-Uplight-Glare) Rating visit: www.ies.org/PDF/Erratas/TM-15-11BugRatingsAddendum.pdf.