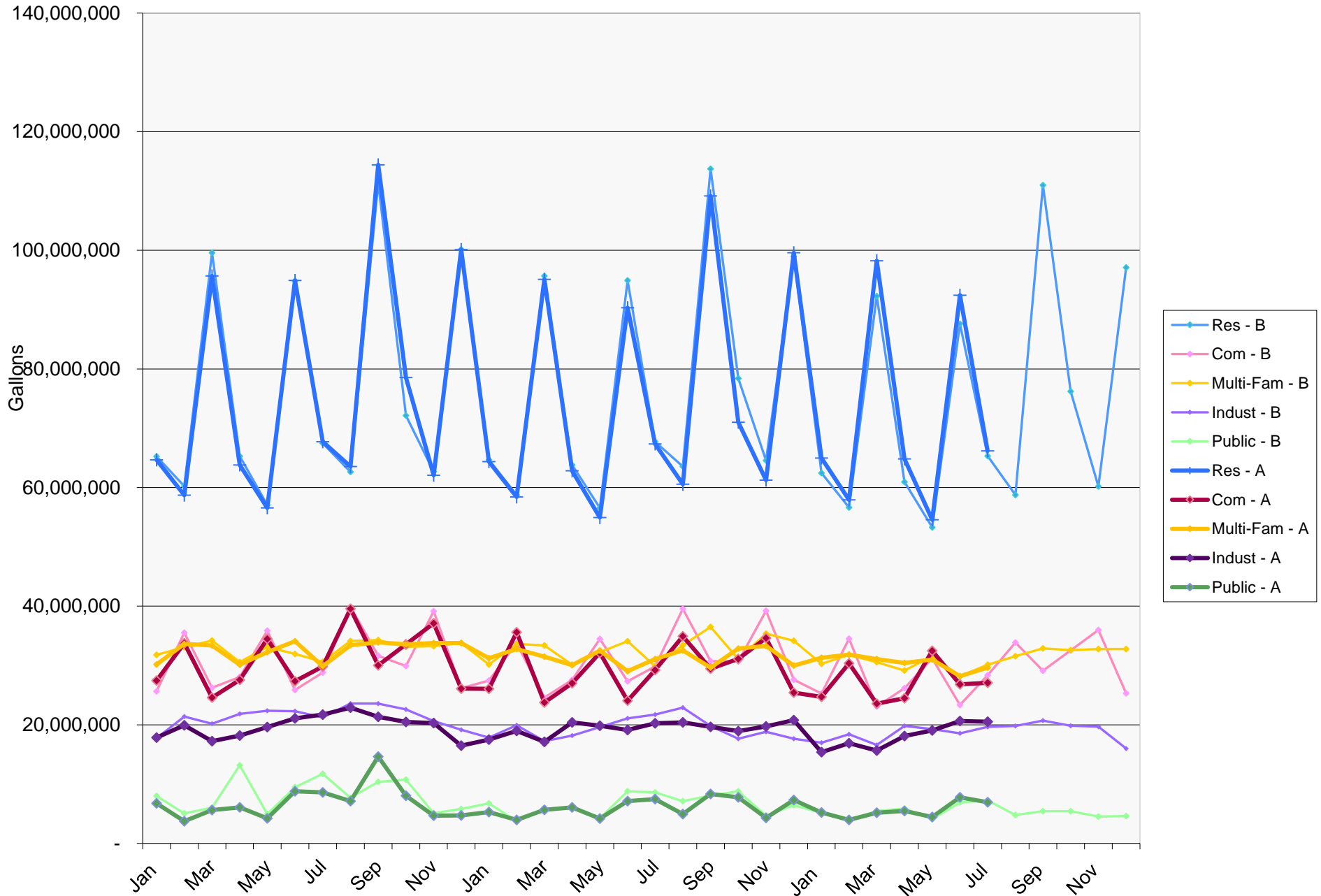


**WAUKESHA WATER UTILITY
STATEMENT OF REVENUES & EXPENSES
MONTH ENDED 7/31/2018**

	CURRENT MONTH				YEAR TO DATE				ANNUAL BUDGET
	ACTUAL'18	BUDGET'18	VARIANCE	%	ACTUAL'18	BUDGET'18	VARIANCE	%	
OPERATING REVENUES:									
Residential	\$364,049.45	\$365,957.50	(\$1,908.05)	(0.52)	\$2,735,743.31	\$2,710,453.63	\$25,289.68	0.93	\$4,935,965.56
Commercial	119,176.31	125,279.29	(6,102.98)	(4.87)	798,033.89	836,255.96	(38,222.07)	(4.57)	1,511,321.72
Industrial	70,021.37	69,210.14	811.23	1.17	433,935.08	453,932.29	(19,997.21)	(4.41)	790,195.60
Public	27,517.70	29,036.55	(1,518.85)	(5.23)	159,924.30	160,268.24	(343.94)	(0.21)	302,092.85
Multi Family	128,698.99	133,542.36	(4,843.37)	(3.63)	894,800.16	921,299.95	(26,499.79)	(2.88)	1,618,382.44
Irrigation	4,886.37	0.00	4,886.37	0.00	10,731.67	0.00	10,731.67	0.00	0.00
Total Metered Sales	\$714,350.19	\$723,025.84	(\$8,675.65)	(1.20)	\$5,033,168.41	\$5,082,210.07	(\$49,041.66)	(0.96)	\$9,157,958.17
Private Fire Capacity	\$21,133.92	\$18,741.94	\$2,391.98	12.76	\$141,411.37	\$129,374.02	\$12,037.35	9.30	\$222,476.02
Public Fire Capacity	164,853.31	164,415.30	438.01	0.27	1,197,958.80	1,212,153.82	(14,195.02)	(1.17)	2,113,211.26
Other Operating Revenues	29,402.14	27,287.63	2,114.51	7.75	227,348.56	230,646.40	(3,297.84)	(1.43)	473,981.97
TOTAL OPERATING REVENUES	\$929,739.56	\$933,470.71	(\$3,731.15)	(0.40)	\$6,599,887.14	\$6,654,384.31	(\$54,497.17)	(0.82)	\$11,967,627.42
OPERATING EXPENSES:									
Source	\$50,107.97	\$50,778.77	(\$670.80)	(1.32)	\$351,678.91	\$355,451.39	(\$3,772.48)	(1.06)	\$680,345.28
Pumping	73,244.58	87,298.90	(14,054.32)	(16.10)	525,539.67	617,969.77	(92,430.10)	(14.96)	1,071,398.85
Treatment	16,437.87	32,890.66	(16,452.79)	(50.02)	217,527.91	278,234.62	(60,706.71)	(21.82)	491,137.92
Distribution	80,107.71	83,955.11	(3,847.40)	(4.58)	640,357.64	619,649.52	20,708.12	3.34	1,337,137.56
Customer Service	13,636.64	9,074.33	4,562.31	50.28	103,800.26	64,314.31	39,485.95	61.40	127,755.52
Administrative	103,625.80	118,245.77	(14,619.97)	(12.36)	811,721.08	966,182.84	(154,461.76)	(15.99)	1,584,571.00
Total	\$337,160.57	\$382,243.54	(45,082.97)	(11.79)	\$2,650,625.47	\$2,901,802.45	(251,176.98)	(8.66)	\$5,292,346.13
MANAGERS' MARGIN	592,578.99	551,227.17	41,351.82	7.50	3,949,261.67	3,752,581.86	\$196,679.81	5.24	6,675,281.29
Depreciation	152,759.10	152,003.45	755.65	0.50	1,065,972.47	1,064,024.15	1,948.32	0.18	1,824,041.40
Tax Equivalent	153,174.20	153,174.20	0.00	0.00	1,072,219.40	1,072,219.40	0.00	0.00	1,838,090.40
Other Taxes	12,304.97	12,124.45	180.52	1.49	85,207.56	84,996.15	211.41	0.25	158,227.20
TOTAL OPERATING EXPENSES	\$655,398.84	\$699,545.64	(\$44,146.80)	(6.31)	\$4,874,024.90	\$5,123,042.15	(\$249,017.25)	(4.86)	\$9,112,705.13
TOTAL OPERATING INCOME(LOSS)	\$274,340.72	\$233,925.07	\$40,415.65	17.28	\$1,725,862.24	\$1,531,342.16	\$194,520.08	12.70	\$2,854,922.29
NON OPERATING INCOME&(EXPENSE)	(140,166.13)	(200,729.50)	60,563.37	(30.17)	(938,209.22)	(1,317,484.52)	379,275.30	(28.79)	(467,892.24)
NET INCOME(LOSS)	\$134,174.59	\$33,195.57	\$100,979.02	304.19	\$787,653.02	\$213,857.64	\$573,795.38	268.31	\$2,387,030.05

WWU
 Billed Gallons
 Actual v Budget
 2016 - 2018



**WAUKESHA WATER UTILITY
STATEMENT OF SOURCES AND USES OF CASH
PERIOD ENDING JULY 31, 2018**

Cash Balance - June 30, 2018

\$21,523,628

SOURCES:

Operations:

Customers - water sales	\$979,096
Waste Water Utility - joint metering billing	56,007
Rent of utility property - cellular leases	12,153
Receipts on sewer bills	1,400,041
Receipts from return flow	7,021
Reimbursement from City for return flow expenses	3,099,931
Other - miscellaneous	13,461
Total Cash From Operating Activities	\$5,567,709

Capital and Related Financing Activities:

Grants	
Contributions	4,233
Issuance of long-term debt	
Sale of short-term debt	
Interest income	40,941
Total Cash From Capital/ Investing Activities	\$45,174

Total Cash Receipts

\$5,612,883

USES:

Salaries, wages, payroll taxes and benefits	\$254,941
Subcontracted and outside services	24,334
Disbursement to city for sewer transfer	
Pumping power	62,775
Purchase of materials and supplies	292,977
Tax equivalent - PILOT	
Acquisition of capital assets	1,574,126
Debt service - principal	
Debt service - interest	

Total Cash Used

\$2,209,152

Net Change in Cash

\$3,403,731

Cash Balance - July 31, 2018

\$24,927,359

**WAUKESHA WATER UTILITY
BALANCE SHEET
7/31/2018**

<u>ASSETS</u>	<u>THIS YEAR</u>
CURRENT	
CASH AND INVESTMENTS	\$22,670,258.84
ACCOUNTS RECEIVABLE	6,159,389.04
RECEIVABLE FROM SEWER REIMB	0.01
MATERIALS & SUPPLIES	571,884.43
OTHER CURRENT ASSETS	15,840.00
ACCRUED UTILITY REVENUE	0.00
TOTAL CURRENT ASSETS	<u>\$29,417,372.32</u>
DEFERRED	
DEFERRED ASSETS	<u>\$21,371,996.31</u>
TOTAL DEFERRED DEBITS	21,371,996.31
RESTRICTED	
DEBT PAYMENT ACCOUNT	\$829,368.01
DEBT RESERVE ACCOUNT	476,702.27
CONSTRUCTION FUND	148.49
TAX EQUIV RESERVE ACCOUNT	950,881.34
TOTAL RESTRICTED FUNDS	<u>\$2,257,100.11</u>
LONG TERM	
UTILITY PLANT IN SERVICE-NET	\$90,440,536.72
PROPERTY HELD FOR FUTURE USE	435,089.69
CONSTRUCTION WORK IN PROGRESS	2,179,333.06
RESTRICTED NET PENSION	<u>(120,942.00)</u>
TOTAL UTILITY PLANT	<u>\$92,934,017.47</u>
TOTAL ASSETS	<u><u>\$145,980,486.21</u></u>
 LIABILITIES	
CURRENT	
CUR PORTION BOND	610,000.00
NOTES PAYABLE	26,610,000.00
ACCOUNTS PAYABLE	2,313,065.52
PAYABLE TO OTHER FUNDS	4,255,457.94
CUSTOMER DEPOSITS	199,823.23
A/P MISCELLANEOUS	0.00
TAXES ACCRUED	1,093,680.00
INTEREST ACCRUED	537,340.43
EMPLOYEE WITHHOLDING	15,639.42
ACCRUED PAYROLL	101,952.00
ACCRUED VACATION	236,087.81
TOTAL CURRENT LIABILITIES	<u>\$35,973,046.35</u>
DEFERRED CREDITS	
CUSTOMER ADVANCES CONSTRUCTION	\$0.00
REGULATORY LIABILITY	1,035,156.22
OPEB LIABILITY	3,953,441.68
OTHER DEFERRED CREDITS	<u>2,887,131.32</u>
TOTAL DEFERRED CREDITS	\$7,875,729.22
LONG-TERM	
BONDS	\$28,287,213.66
 EQUITY	
CAPITAL PAID IN BY MUNICIPALITY	\$2,669,743.20
EQUITY FINANCED BY UTILITY	36,520,472.56
EQUITY FROM CONTRIBUTIONS	33,170,671.20
RESTRICTED EQUITY	695,957.00
NET PROFIT (LOSS)	787,653.02
TOTAL EQUITY	<u>\$73,844,496.98</u>
TOTAL EQUITY AND LIABILITIES	<u><u>\$145,980,486.21</u></u>

WWU
TRANSMISSION AND DISTRIBUTION
BUDGET VARIANCE ANALYSIS

Project	Project #	Description/Location	Budget	Current Estimate	PJC Total	Aldermanic District		Construction Completion
WM offsets from WSB from Genesee Road to Fiddlers Creek Drive	M00501	Water Main offsets to accommodate changes in the storm sewer and roadway alignments. Project run by WDOT.		\$ 134,208	\$ 20,138	6	Jack Wells	Summer 2019
						7	Daniel J. Manion	
						13	Dean Lemke	
						14	Bill Boyle	
Northview Rd - Grandview to Tallgrass	M00518	Replace 1,500 feet of 8-inch main from 1967 with 12-inch PVC water main on Northview Rd. between Grandview and Tallgrass. Project done with City.		\$ 360,504	\$ 164,910	5	Peter Bartels	October 2018
						14	Bill Boyle	
South St - Grand to Barstow and Gaspar St - Main to Broadway	M00519	Replace 720 feet of 12-inch main from 1938 with 12-inch ductile iron main on South St. from Grand to Barstow. Replace 280 feet of 6-inch main from 1909 with 8-inch ductile iron. Project done with City.		\$ 395,176	\$ 339,809	11	Erik Helgestad	July 2018
Fairview - Motor to St Paul and Motor - Fairview to Washington	M00520	Replace 1,540 feet of 6-inch from 1927 with 8-inch PVC on Fairview - Motor to St. Paul and Motor - Fairview to Washington. Project done with City.		\$ 304,562	\$ 214,430	2	Eric Payne	September 2018
Oakmont to Pebble Valley Zone	TBD	Extend 12" water main through easement connecting Pebble Valley and Oakmont.		\$ 325,000	\$ -	14	Bill Boyle	January 2019
<i>Routine Projects</i>			\$ 2,160,072	\$ 1,519,449	\$ 739,288			
<i>Misc Routine</i>			\$ 905,584	\$ 905,584	\$ 905,584			
<i>Total Routine</i>			\$ 3,065,656	\$ 2,425,033	\$ 1,644,872			
Main St - Barstow to Lombardi	GLCD0007	Replace 2,800 feet of 8-inch from 1909 with 24-inch ductile iron on Main St. from Barstow to Lombardi. Project being done with City sanitary.		\$ 2,049,467	\$ 610,710	3	Cassie Rodriguez	October 2018
						11	Erik Helgestad	
N Moreland - Michigan to Summit	GLCD0009	Replace 2,000 feet of 8-inch from 1957 with 16-inch ductile iron main on N. Moreland Blvd. from Michigan to Summit.		\$ 616,800	\$ 19,502	4	Joe Pieper	October 2018
						15	Cory Payne	
Motor - Fairview to Mountain and Fairview - Motor to Dopp	GLCD0010	Replace 1,160 feet of 6-inch from 1917 with 20-inch ductile iron on Motor - Fairview to Mountain and Fairview - Motor to Dopp. Project done with City.		\$ 347,462	\$ 261,534	2	Eric Payne	September 2018
<i>Distribution System Improvements</i>			\$ 4,001,241	\$ 3,013,730	\$ 891,745			
Total Transmission & Distribution			\$ 7,066,897	\$ 5,438,763	\$ 2,536,617			

Bold Totals are Based on Bids

Monthly Interim Report
Waukesha Water Utility
Future Water Supply

August 9, 2018

This update is solely intended for the use of Waukesha Water Utility's internal management and for Waukesha Water Utility's discussions with the Owner's Engineer and Contractor. The update is not intended to be and should not be used by any other parties without prior written consent from Baker Tilly Virchow Krause, LLP



Summary of Significant Events

Scope and Objectives

Waukesha Water Utility (“WWU” or “Owner”) engaged Baker Tilly Virchow Krause, LLP (Baker Tilly, “we” or “our”) to perform construction audit services on the Future Water Supply project. Greeley and Hansen (“GH” or “PM/CM”) is the Program Manager and Construction Manager engaged by the Owner.

The primary objective of this engagement is to verify whether project expenditures billed to Waukesha Water Utility are adequately supported, verifiable and appropriately allocated to the project.

Current Period Significant Events

This section of the monthly interim report summarizes Audit Issues and Requests for Information during the current period. The project-to-date Audit Issues (AI) and Request for Information (RFI) logs are included as attachments with this document.

Current Period Audit Issues

During the current period, we reviewed Invoice No. 23 from Greeley and Hansen. There were no Audit Issues identified during the current period.

Current Period Request for Information

We sent a labor sample request to Greeley and Hansen on August 8, 2018 to verify the actual hours the selected employees were paid (RFI-024). We will review the documentation provided by Greeley and Hansen and report on the results in the September Status Update.



Exhibit 5 – Earned Value Analysis



Earned Value Analysis

The Earned Value (EV) technique is being used to monitor the Program scope, schedule and cost, and to assess overall Program performance. The components of EV are the work breakdown structure, the schedule and the estimated costs. By connecting these components, future Program performance can be predicted and proactive actions can be taken to stay on track.

The work breakdown structure is a grouping of Program elements that define and organize the scope of the Program. For this Program, the work breakdown structure is defined by the Task and subtask activities, deliverables, meetings and workshops. An estimated cost, or Planned Value (PV), duration and interdependencies are assigned to the Task and subtask activities, deliverables, meetings and workshop. A PV cumulative cost curve is used to identify the value at any point in time of the work that is planned to be done.

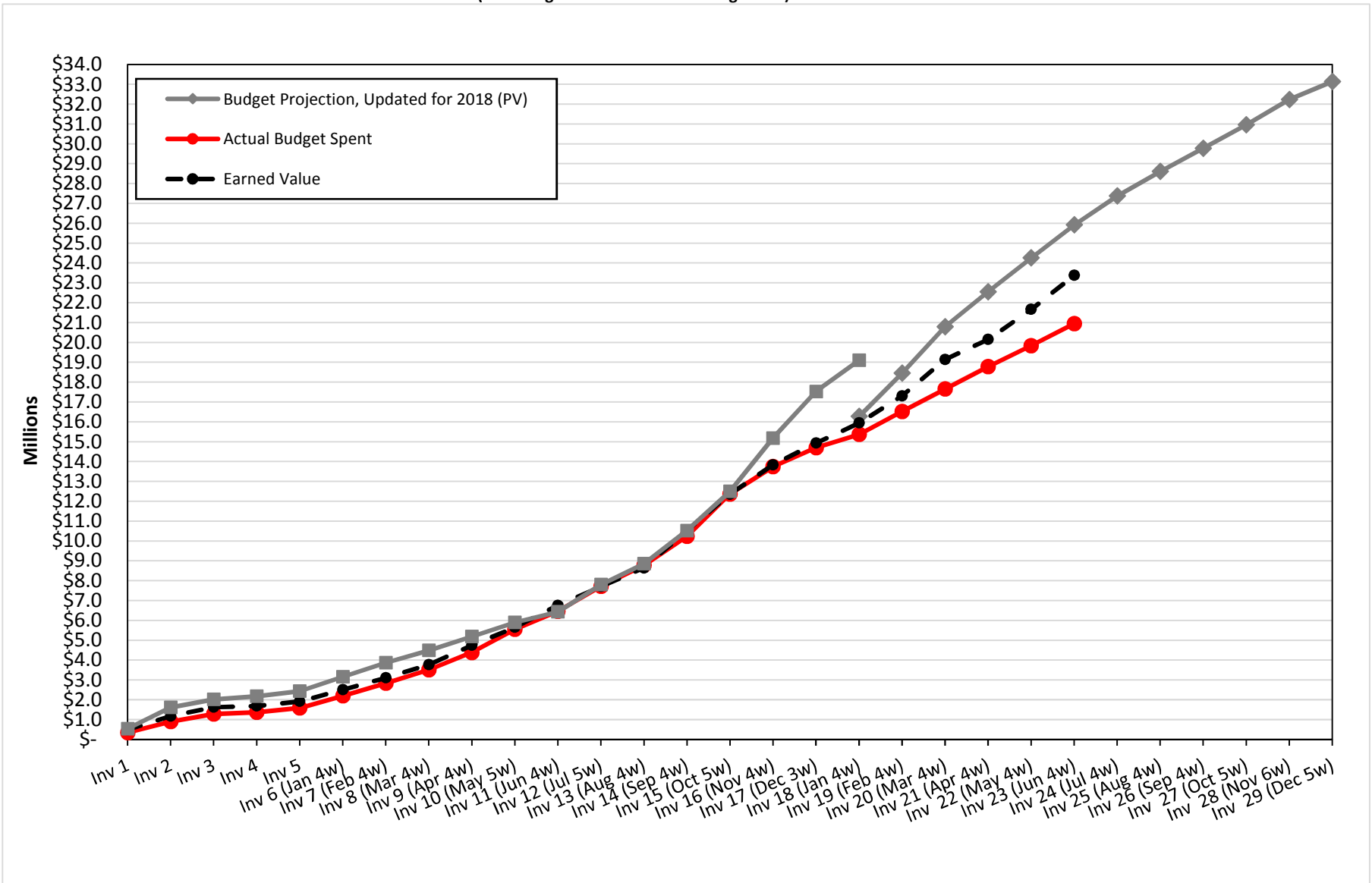
On a monthly basis, the value of the work completed as a percentage of the PV is determined by the Program Manager and defines the EV which is shown on the cumulative cost curve. The monthly Program invoices define the Actual Costs (AC) which are also shown on the cumulative cost curve. Using the cumulative cost curves developed for the overall Program and each Task, the Schedule Performance Index (SPI) and the Cost Performance Index (CPI) are calculated. SPI is calculated by dividing EV by PV. The CPI is calculated by dividing EV by AC.

At the December 2017 Commission Meeting, the WWU Commission approved the 2018 Milwaukee Route Study for \$1,345,565 and the Phase 2 2018 budget of \$13,999,908. The remaining budget for Task 3-300 and 5-200 water quality scope in the amount of \$691,441 has been removed from the Program Approved Total amount of \$34,242,960.

The 2018 budgets approved by the Commission in December 2017 have been added to the Earned Value charts in this Exhibit. The Earned Value charts have been updated to reflect the planned expenditure of the 2018 budgets for each Task through December 2018.

The work progress and challenges for each Task are noted on the following graphs.

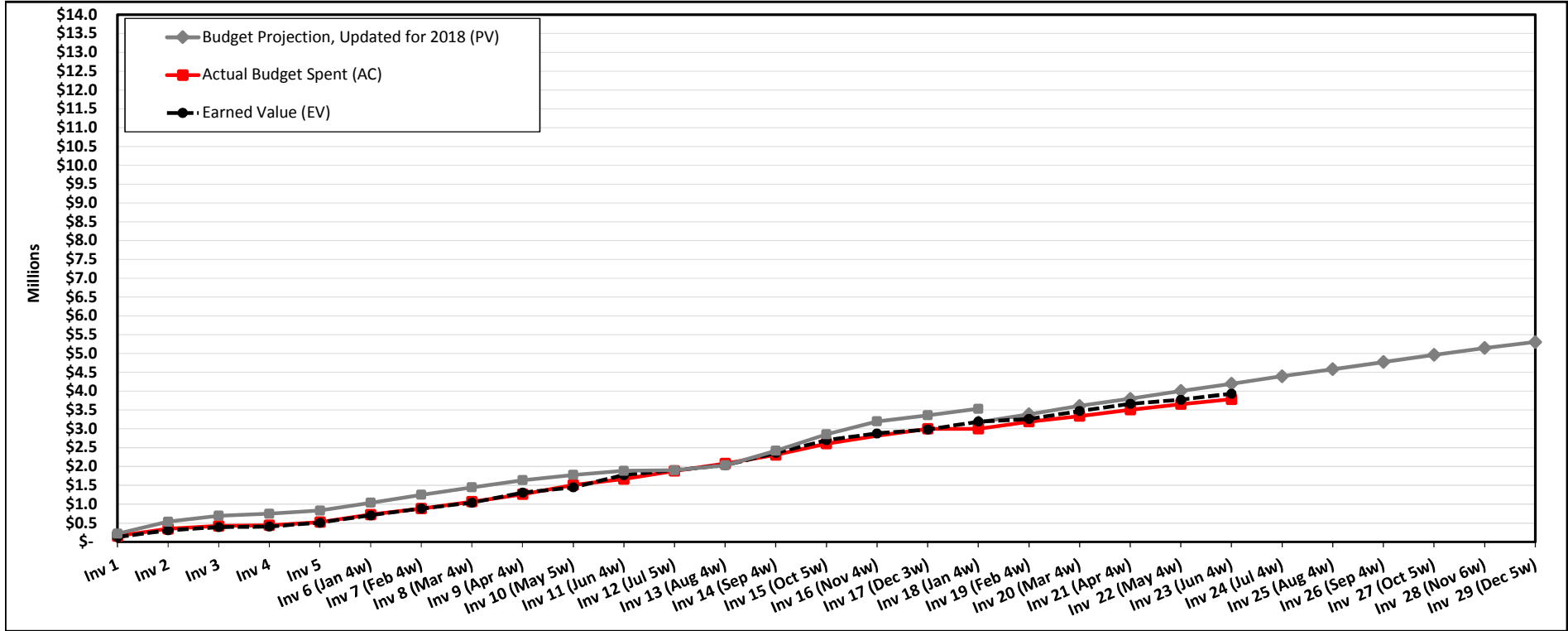
Great Lakes Water Supply Program PM/CM
Program
Earned Value Chart
Phase 1 and 2 (Invoice No. 23)
 (Excluding Allowances and Contingencies)



% Spent 62.9%
Actual Budget Spent \$20,941,850

Schedule Performance Index (SPI) 0.90
Cost Performance Index (CPI) 1.12

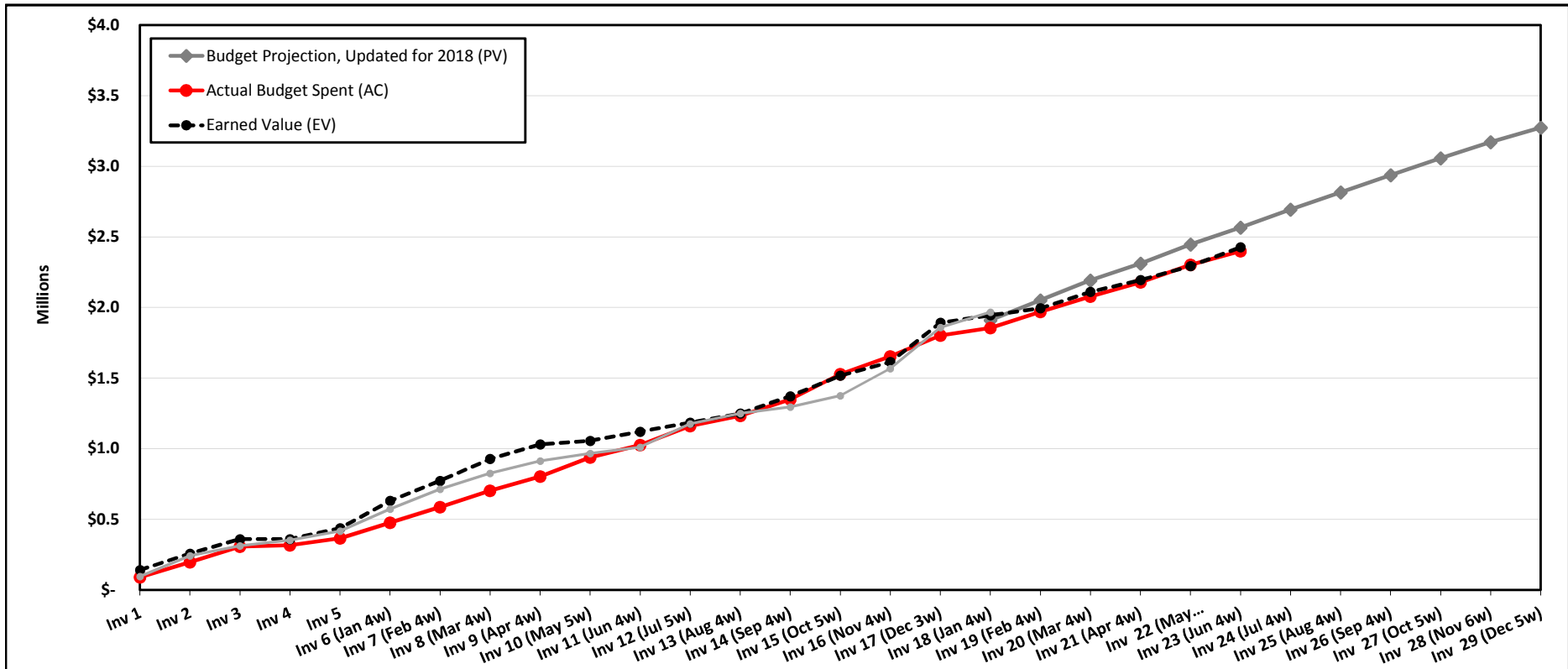
Note: Budget associated with Task 3-300, 5-200 and 5-300 water quality scope has been removed.



Earned Value Calculations	
Budget at Completion ^{(BAC)(1)} (BAC)	\$ 5,390,965
Estimate to Complete ^(ETC1) (ETC1=EAC1-AC)	\$ 1,400,431
Cost Variance ^(CV) (CV=EV-AC)	\$ 149,055
Schedule Variance ^(SV) (SV=EV-PV)	\$ (264,732)
Cost Performance Index ^(CPI) (CPI=EV/AC)	1.04
Schedule Performance Index ^(SPI) (SPI=EV/PV)	0.94
Cost /Schedule Index ^(CSI) (CSI=CPI x SPI)	0.97
Estimate at Completion ^(EAC1) (EAC1=BAC/CPI)	\$ 5,186,780.57
Variance at Completion ^(VAC1) (VAC1=BAC-EAC1)	\$ 204,184.43

Task 1	Program Management Plan/Progress
	<ul style="list-style-type: none"> Prepared and submitted Invoice No. 22; updated the Financial Management Dashboard and Report for Invoice No. 22. Held seven (11) Program Team Task 1 meetings. Continued the development of Sections B and E the Water Infrastructure Finance and Innovation Act (WIFIA) Letter of Interest (LOI).

Task 1	Program Management Challenges
	<ul style="list-style-type: none"> The Program Open House in Milwaukee occurred on April 4. Delay in the scheduling of the Open House meeting negatively impacts the Program schedule for completion of field investigations that are needed for submission of the PSC Construction Authorization which is a critical path item for the design, bidding and construction of the Program.



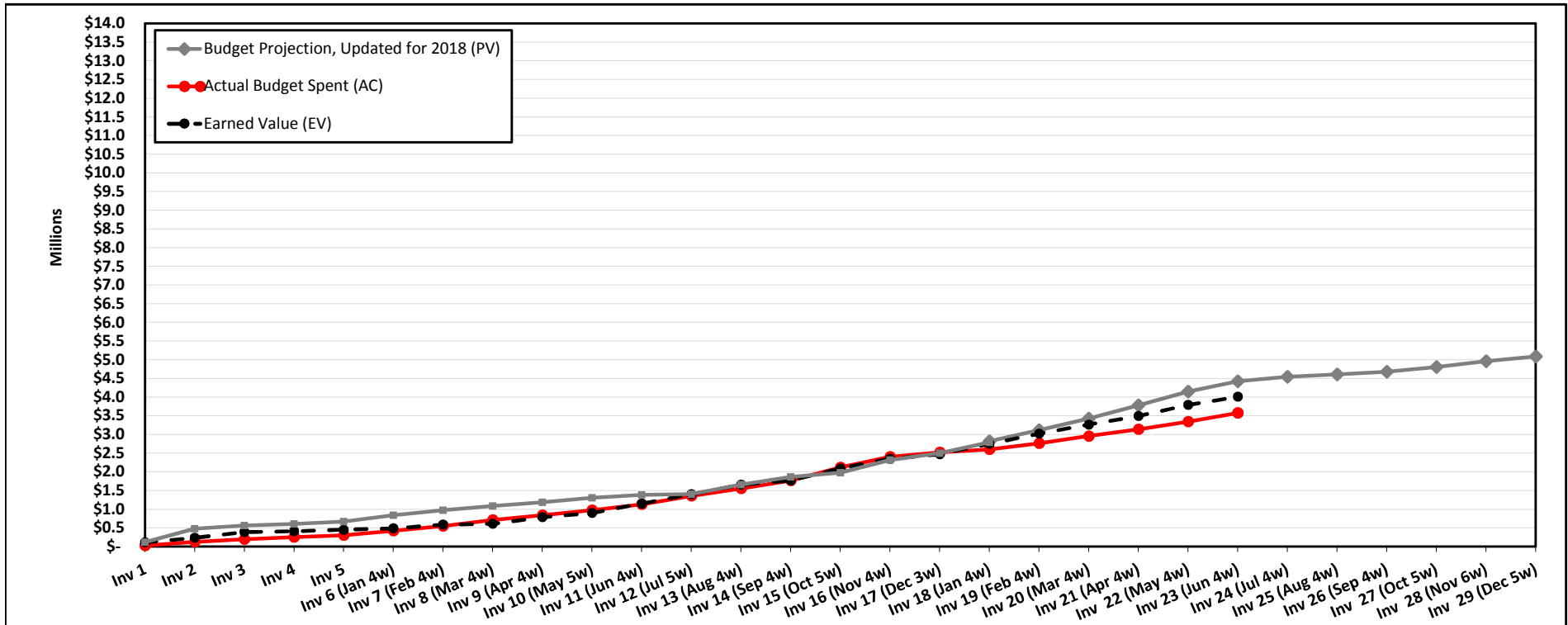
Earned Value Calculations	
Budget at completion ^(BAC) (BAC)	\$ 3,325,716
Estimate to Complete ^(ETC1) (ETC1=EAC1-AC)	\$ 887,737
Cost Variance ^(CV) (CV=EV-AC)	\$ 27,594
Schedule Variance ^(SV) (SV=EV-PV)	\$ (139,673)
Cost Performance Index ^(CPI) (CPI=EV/AC)	1.01
Schedule Performance Index ^(SPI) (SPI=EV/PV)	0.95
Cost /Schedule Index ^(CSI) (CSI=CPI x SPI)	0.96
Estimate at Completion ^(EAC1) (EAC1=BAC/CPI)	\$ 3,287,915.89
Variance at Completion ^(VAC1) (VAC1=BAC-EAC1)	\$ 37,800.11

Task 2 Programmatic Support Services Plan/Progress

- Created, formatted and finalized ACE18 PowerPoint presentation.
- Drafted new Frequently Asked Questions for the Great Water Alliance website and reviewed drafts by others. Topics included return flow and the Root River, as well as rate impacts.
- Edited an article on Waukesha's project for the AWWA newsletter and edited an abstract for an AWWA presentation. Edited a biography for Dan Duchniak for a Waukesha County Business Alliance event.

Task 2 Programmatic Support Services Challenges

- WWU legal counsel will be discussing the Draft 2018 Program Information Plan with Wisconsin PSC. The results of the discussion may impact the Program strategic communication plan.

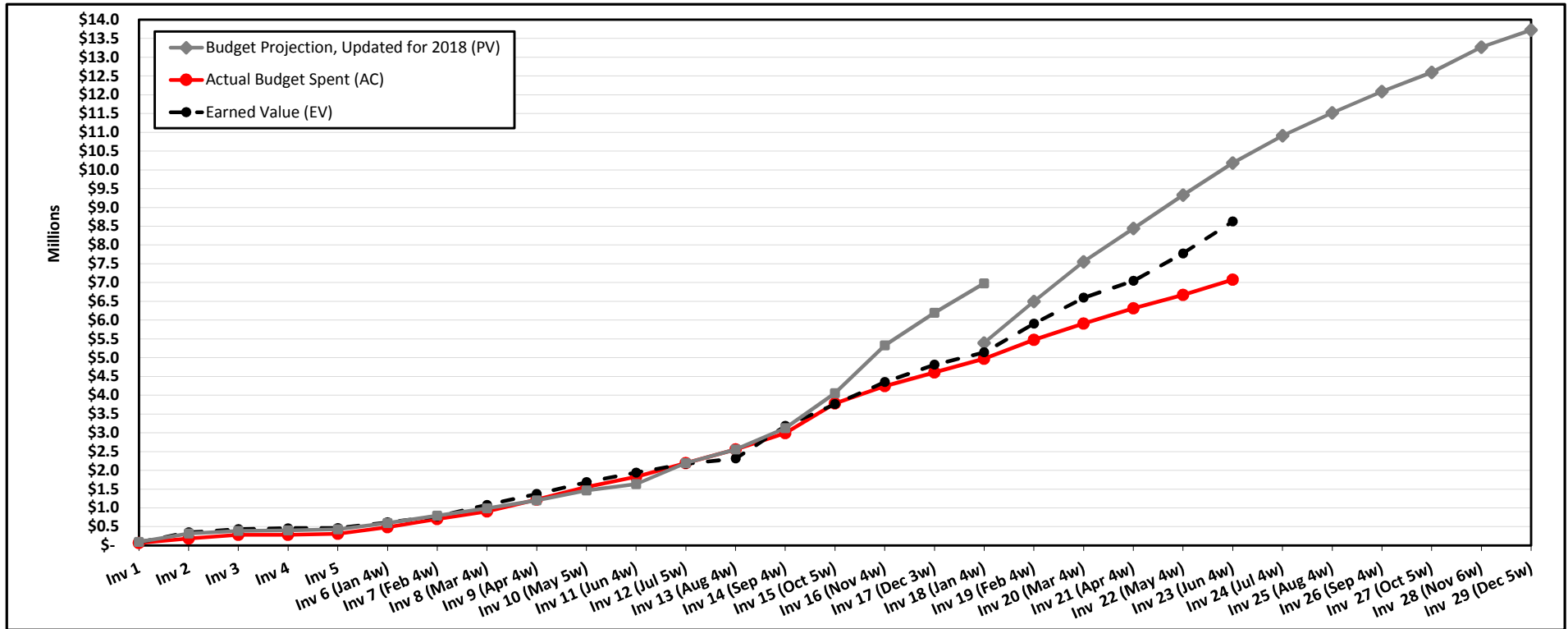


Note: The Task 3 amount for Invoice 5 was reported incorrectly in the previous version of this Report. The correct cumulative amount is \$263.96 lower.
The Task 3 Budget at completion amount was revised to reflect Task Authorizations and contract amendments

Earned Value Calculations	
Budget at completion ^{(BAC)(1)} (BAC)	\$ 5,083,873
Estimate to Complete ^(ETC1) (ETC1=EAC1-AC)	\$ 955,587
Cost Variance ^(CV) (CV=EV-AC)	\$ 432,617
Schedule Variance ^(SV) (SV=EV-PV)	\$ (411,669)
Cost Performance Index ^(CPI) (CPI=EV/AC)	1.12
Schedule Performance Index ^(SPI) (SPI=EV/PV)	0.91
Cost /Schedule Index ^(CSI) (CSI=CPI x SPI)	1.02
Estimate at Completion ^(EAC1) (EAC1=BAC/CPI)	\$ 4,535,787.31
Variance at Completion ^(VAC1) (VAC1=BAC-EAC1)	\$ 548,085.69

Task 3 Permitting Plan/Progress
<ul style="list-style-type: none"> Held seven (7) Program Task 3 meetings. Continued drafting the PSC CA application and the WDNR/USACE wetlands and waterways applications and supporting documents. Continued drafting Facility Plan Amendment. Identified required permits for Supply Pipeline field investigations. Draft Agricultural Mitigation Plan submitted to Task Lead for review.

Task 3 Permitting Challenges
<ul style="list-style-type: none"> Ongoing WDNR negotiations on the Return Flow Management Plan have delayed the completion of the document. Meetings and analysis to complete this work will continue. The delay on selecting the preferred Water Supply Pump Station location has caused additional delay on the PSC CA application and the WDNR/USACE wetlands and waterways application sections related to the supply route.

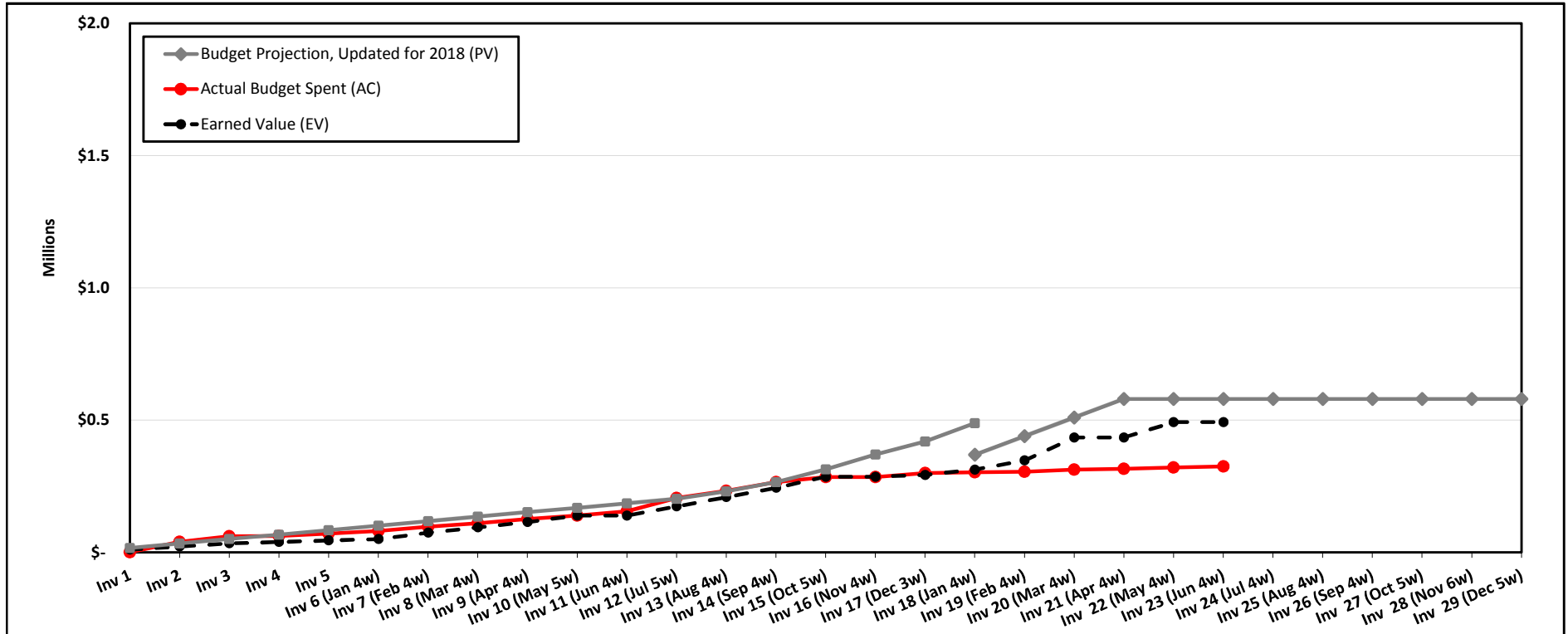


Note: The Task 4 Budget at completion amount was revised to reflect Task Authorizations and contract amendments

Earned Value Calculations	
Budget at completion ^(BAC) (BAC)	\$ 13,744,049
Estimate to Complete ^(ETC1) (ETC1=EAC1-AC)	\$ 4,193,697
Cost Variance ^(CV) (CV=EV-AC)	\$ 1,553,585
Schedule Variance ^(SV) (SV=EV-PV)	\$ (1,550,053)
Cost Performance Index ^(CPI) (CPI=EV/AC)	1.22
Schedule Performance Index ^(SPI) (SPI=EV/PV)	0.85
Cost /Schedule Index ^(CSI) (CSI=CPI x SPI)	1.03
Estimate at Completion ^(EAC1) (EAC1=BAC/CPI)	\$ 11,269,711.35
Variance at Completion ^(VAC1) (VAC1=BAC-EAC1)	\$ 2,474,337.94

Task 4 Route Study and Pipeline Plan/Progress
<ul style="list-style-type: none"> The Draft Preliminary Design Report (6-240 D1) was submitted to WWU for review and comment. Proceeded with field investigations and further developed reports associated with field investigations along the Water Supply and Return Flow Pipelines.

Task 4 Route Study and Pipeline Challenges
<ul style="list-style-type: none"> Changes to the selected WSPS location and connection to the MWW distribution system could negatively impact the schedule for submission of the PSC Construction Authorization, which is a critical path item for the design, bidding and construction of the Program.



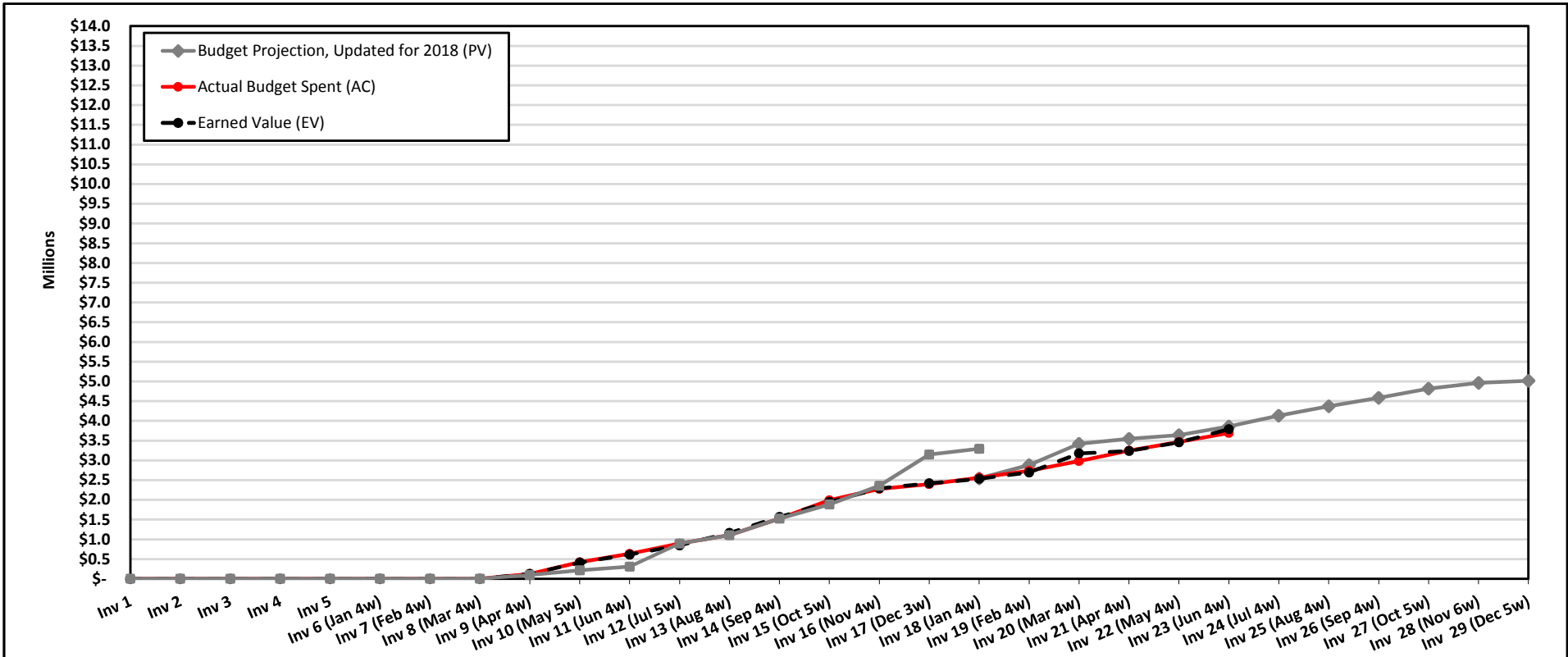
Earned Value Calculations	
Budget at completion ^{(BAC)(1)} (BAC)	\$ 579,901
Estimate to Complete ^(ETC1) (ETC1=EAC1-AC)	\$ 57,447
Cost Variance ^(CV) (CV=EV-AC)	\$ 167,382
Schedule Variance ^(SV) (SV=EV-PV)	\$ (87,130)
Cost Performance Index ^(CPI) (CPI=EV/AC)	1.51
Schedule Performance Index ^(SPI) (SPI=EV/PV)	0.85
Cost /Schedule Index ^(CSI) (CSI=CPI x SPI)	1.29
Estimate at Completion ^(EAC1) (EAC1=BAC/CPI)	\$ 382,981.20
Variance at Completion ^(VAC1) (VAC1=BAC-EAC1)	\$ 196,919.87

Task 5 Distribution System Plan/Progress
<ul style="list-style-type: none"> The 5-110 D1 Model Update Technical Memorandum is being updated to incorporate QM comments. The 5-120 D1 Distribution System Hydraulic Modeling Report is being updated to incorporate the QM comments.

Task 5 Distribution System Challenges
<ul style="list-style-type: none"> Scope and budget associated with Tasks 5-200 and 5-300 water quality has been removed.



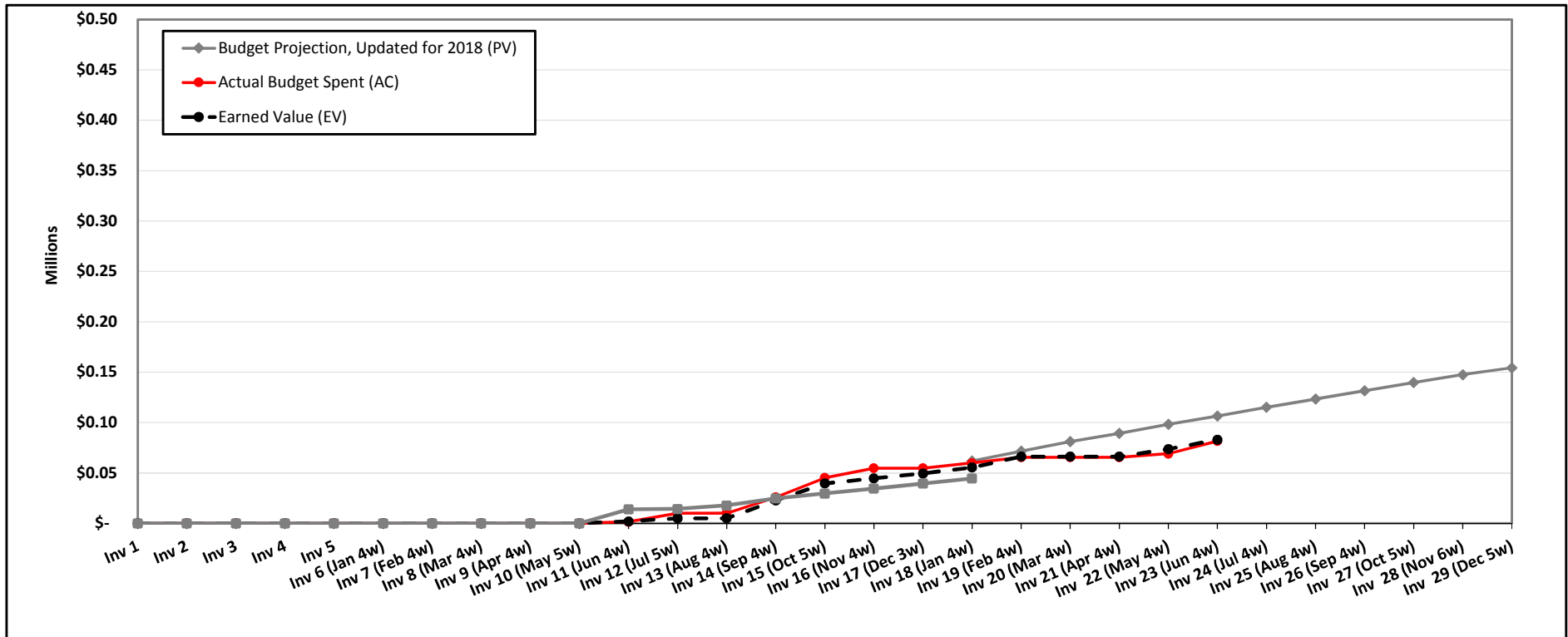
Great Lakes Water Supply Program
Phase 1 and 2
Task 6 - Pump Stations, Storage, and Chemical Treatment Earned Value Chart
(Excluding Allowances and Contingencies)



Earned Value Calculations	
Budget at completion ^{(BAC)(1)} (BAC)	\$ 5,018,415
Estimate to Complete ^(ETC1) (ETC1=EAC1-AC)	\$ 1,191,139
Cost Variance ^(CV) (CV=EV-AC)	\$ 102,337
Schedule Variance ^(SV) (SV=EV-PV)	\$ (64,409)
Cost Performance Index ^(CPI) (CPI=EV/AC)	1.03
Schedule Performance Index ^(SPI) (SPI=EV/PV)	0.98
Cost /Schedule Index ^(CSI) (CSI=CPI x SPI)	1.01
Estimate at Completion ^(EAC1) (EAC1=BAC/CPI)	\$ 4,883,060.47
Variance at Completion ^(VAC1) (VAC1=BAC-EAC1)	\$ 135,354.63

- Task 6 Pump Stations, Storage and Chemical Treatment Plan/Progress**
- Revisions to the Preliminary Design Report (PDR) (6-240 D1).
 - Held meeting with WDNR on stormwater and clear water discharge.
 - Continued progress on Contract Drawings and Specifications
 - Continued progress on the BPS Stormwater Modeling.
 - Coordinated additional geotechnical investigations.
 - Proceeding with coordination with DPLU for Land Transfer for BPS site.

- Task 6 Pump Stations, Storage and Chemical Treatment Challenges**
- The site selection process must be complete for the WSPS in order to perform site investigations including: topographical survey, geotechnical investigation, easement and land acquisitions and environmental assessment.
 - Land Acquisition needs to commence in order to begin zoning process with New Berlin which could impact building materials and site improvements.



Earned Value Calculations	
Budget at completion ^(BAC1) (BAC)	\$ 154,378
Estimate to Complete ^(ETC1) (ETC1=EAC1-AC)	\$ 70,071
Cost Variance ^(CV) (CV=EV-AC)	\$ 1,429
Schedule Variance (SV) (SV=EV-PV)	\$ (23,433)
Cost Performance Index ^(CPI) (CPI=EV/AC)	1.02
Schedule Performance Index ^(SPI) (SPI=EV/PV)	0.78
Cost /Schedule Index ^(CSI) (CSI=CPI x SPI)	0.79
Estimate at Completion ^(EAC1) (EAC1=BAC/CPI)	\$ 151,722.88
Variance at Completion ^(VAC1) (VAC1=BAC-EAC1)	\$ 2,655.12

Task 7 Construction and Construction Management Plan/Progress
<ul style="list-style-type: none"> Draft Preliminary Contracting Strategy Report submitted for internal review.

Task 7 Construction and Construction Management Challenges
<ul style="list-style-type: none"> Impending Federal funding and financing opportunities may impact the contracting strategy for the Program. A Contracting Strategy Workshop will be scheduled.