

MEMORANDUM

DATE: January 15, 2016

TO: Dan Duchniak, General Manager

FROM: Kelly Zylstra, Technical Services Manager

RE: Moreland Blvd, Manhattan Drive to I94 Project – M00453 (DOT project I.D. 2200-16-71)

The WISDOT “let” the reconstruction project on Moreland Blvd, from Manhattan Drive to I94, on Tuesday January 12, 2016. The engineering estimate in the Project Agreement with DOT for our share of the construction is approximately \$69,000.

As of today, only the information from the low bidder was available. After the official award by DOT, thought to occur on 1/18/16, we will be allowed to see the other bids. The name of the underground contractor that the low bidder is planning to use has not yet been provided to us.

I will prepare an updated memo when more information is available. The updated memo will be emailed to the Commissioners, uploaded to Granicus and available at the meeting.

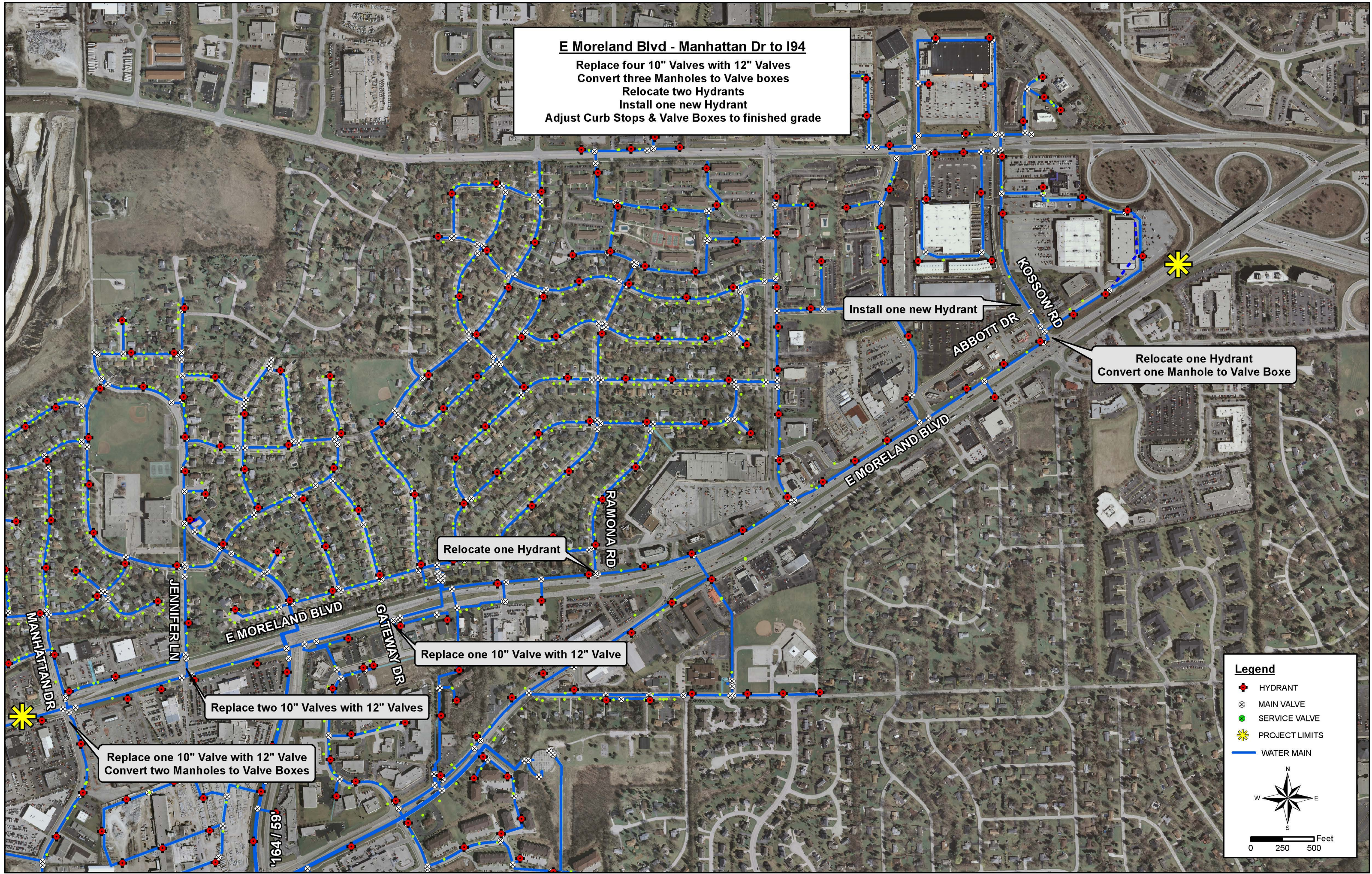
Prime Contractor	Overall Bid Price	Water Main Unit Price and DOT Construction Engineering
Payne & Dolan		\$39,815.00

The \$70,440 budgeted in account 3431 will also cover the additional costs to the Utility of internal construction inspection, tapping the existing main, and as-built costs.

Suggested Motion: Move to approve the water main replacement unit price contract and DOT construction engineering fee totaling \$45,790 for the Waukesha Water Utility’s portion of a Wisconsin Department of Transportation contract for Moreland Blvd, from Manhattan to I94; DOT project I.D. 2200-16-71.

E Moreland Blvd - Manhattan Dr to I94

- Replace four 10" Valves with 12" Valves
- Convert three Manholes to Valve boxes
- Relocate two Hydrants
- Install one new Hydrant
- Adjust Curb Stops & Valve Boxes to finished grade



Install one new Hydrant

Relocate one Hydrant
Convert one Manhole to Valve Boxe

Relocate one Hydrant

Replace one 10" Valve with 12" Valve

Replace two 10" Valves with 12" Valves

Replace one 10" Valve with 12" Valve
Convert two Manholes to Valve Boxes

Legend

- HYDRANT
- MAIN VALVE
- SERVICE VALVE
- PROJECT LIMITS
- WATER MAIN

0 250 500 Feet