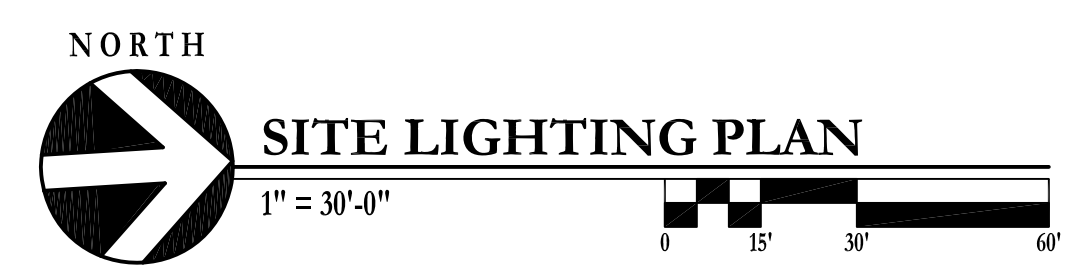
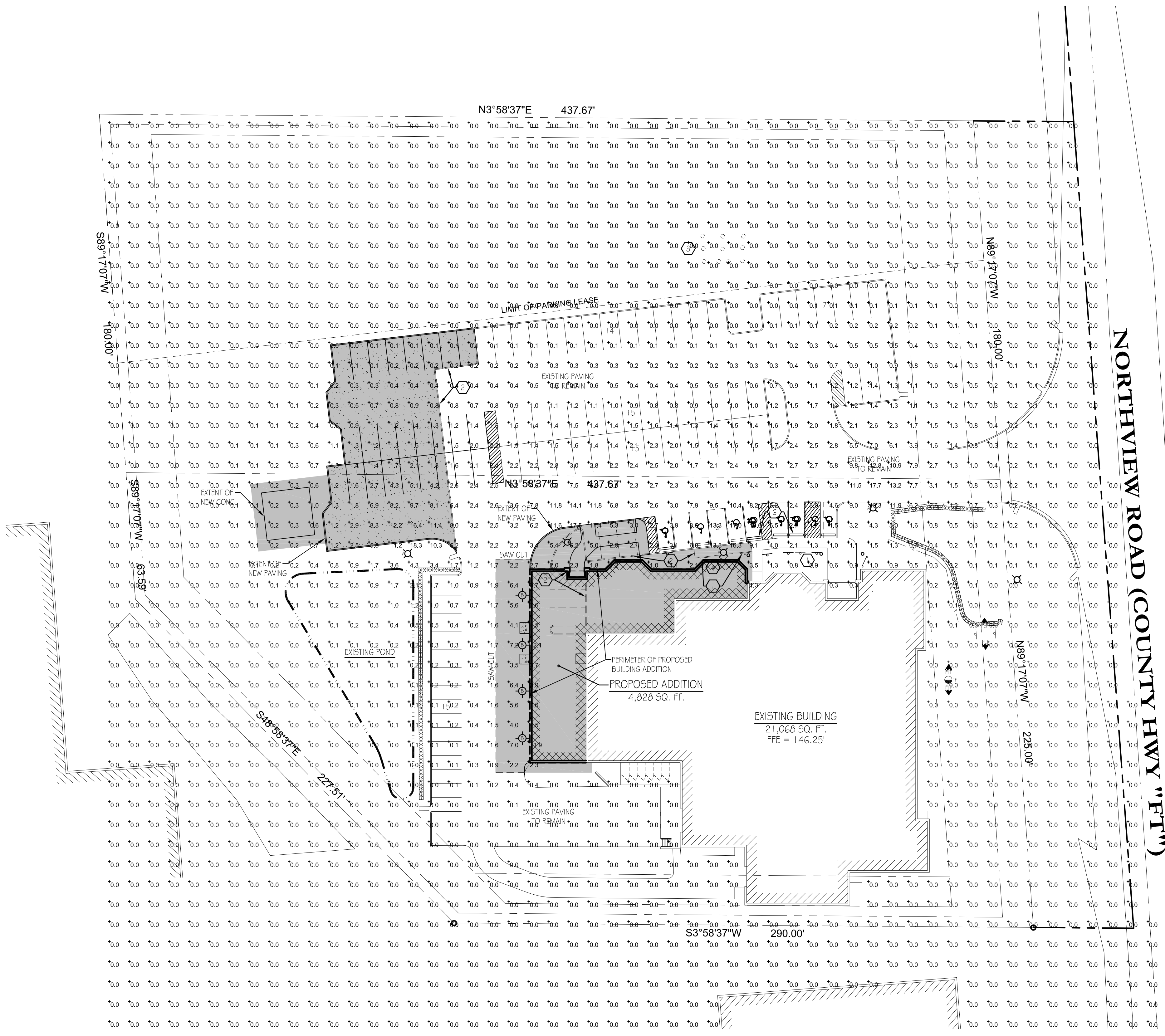


REVISIONS			
Rev.	Date	Description	By

LIGHT FIXTURE SCHEDULE										
SYMBOL	LABEL	QUANTITY	MFGR.	CATALOG NUMBER	LAMP	DESCRIPTION	NUMBER LAMPS	LUMENS PER LAMP	LIGHT LOSS FACTOR	WATTAGE
⊗	A	1	HOLOPHANE	G400HFOOLFXXX	400W CLEAR HPS	MONGOOSE	1	50000	1	444
⊙	B	4	LITHONIA LIGHTING	TWAC 1005	ONE 100-WATT CLEAR ED-17 HIGH PRESSURE SODIUM, HORIZONTAL POSITION.	SPECIFICATION BUILDING MOUNTED LUMINAIRE, 100W HPS, W CLEAR LAMP.	1	9500	1	135

SITE PLAN LEGEND	
---	PROPERTY LINE
---	SETBACK LINE
○	IRON PIPE
■	AREA DISTURBED BY CONSTRUCTION

- SITE DEMOLITION KEYED NOTES**
- REMOVE EXISTING ADA PARKING SIGNS AND SAVE FOR RELOCATION. (BY SITEWORK CONTRACTOR)
  - REMOVE EXISTING CONCRETE WALKS AND CURBING. (BY SITEWORK CONTRACTOR)
  - REMOVE EXISTING WOOD DECK. (BY OWNER)
  - REMOVE EXISTING LIGHT AND POLE. (BY ELECTRICAL CONTRACTOR). POLE BASE REMOVED BY SITEWORK CONTRACTOR.
  - SEE CIVIL DRAWINGS FOR WORK INVOLVING NEW OR EXISTING DRAINS / CULVERTS.
  - REMOVE/SALVAGE EXISTING WHEEL STOPS. SEE A1.2 SITE PLAN FOR NEW LOCATIONS. (TYP. OF 5, BY SITEWORK CONTRACTOR)



**GERALD NELL INC.**  
 W229 N1680 WESTWOOD DRIVE  
 WAUKESHA, WI 53186-1152  
 262-513-3750

**H.A.W.S.**  
**701 NORTHVIEW ROAD**  
**WAUKESHA, WISCONSIN**

Drawn By \_\_\_\_\_  
 Date 05-09-16  
 Scale 1" = 30'-0"  
 Job Number \_\_\_\_\_  
 Sheet Name  
**SITE LIGHTING PLAN**  
 Sheet Number  
**E1.1**  
 SHEET OF TOTAL SHEETS

COPYRIGHT GERALD NELL INC., 2016 ALL RIGHTS RESERVED. THIS DRAWING IS NOT TO BE REPRODUCED, CHANGED, COPIED, DISSEMINATED OR ASSIGNED TO ANY PARTY IN ANY FORM OR MANNER WITHOUT FIRST OBTAINING THE EXPRESS WRITTEN PERMISSION OF GERALD NELL INC. THE CLIENT AGREES TO INDEMNIFY AND HOLD GERALD NELL INC. HARMLESS FROM ANY DAMAGES, LIABILITY, OR COST, INCLUDING ATTORNEY'S FEES AND COSTS OF DEFENSE ARISING FROM ANY CHANGES OR ALTERATIONS MADE BY ANYONE OTHER THAN GERALD NELL INC. OR FROM ANY REUSE OF THE DRAWINGS OR DATA WITHOUT THE PROOF WRITTEN CONSENT OF GERALD NELL INC.