



CITY OF WAUKESHA

Administration

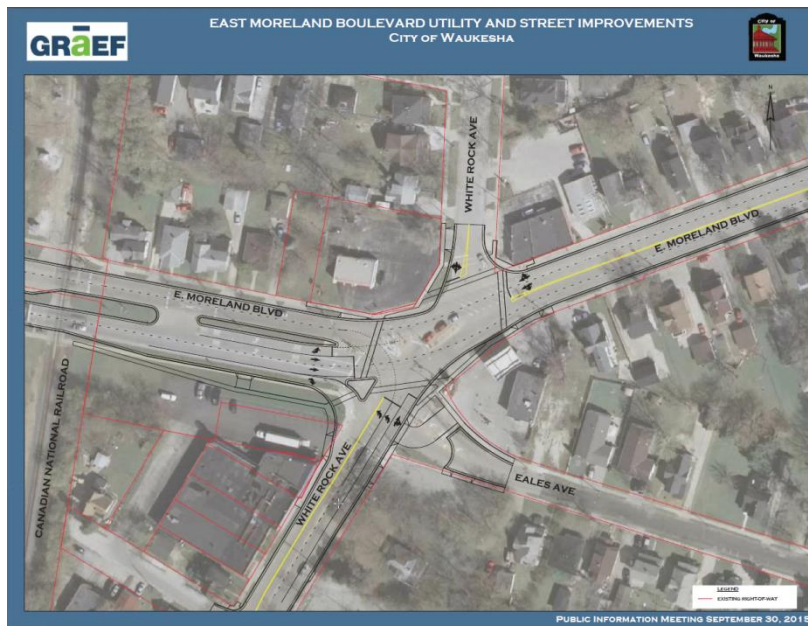
201 Delafield Street, Waukesha, WI 53188
 Tel: 262.524.3701 fax: 262.524.3899
 www.ci.waukesha.wi.us

Committee: Plan Commission	Date: 1/27/2016
Common Council Item Number: ID#16-093	Date: Click here to enter a date.
Submitted By: Maria Pandazi, City Planner	City Administrator Approval: Kevin Lahner, City Administrator Click here to enter text.
Finance Department Review: Rich Abbott, Finance Director RA	City Attorney's Office Review: Brian Running, City Attorney Click here to enter text.
Subject: Proposed modification to Eales Avenue at the intersection of E. Moreland Boulevard and White Rock Avenue	

Details:

The reconstruction of E. Moreland Boulevard between the Fox River and Manhattan Drive is scheduled to begin in the spring of 2016. The project will replace the existing roadway and include work on the sanitary sewer, water main and the installation of a new storm sewer for flood mitigation improvements. With this reconstruction project the five-leg intersection of E. Moreland Boulevard & White Rock Avenue / Eales Avenue has been studied to improve safety, intersection geometrics and traffic operations. This intersection has the 2nd highest accident frequency in the City. The studies found that removing Eales Avenue from the intersection will improve safety, intersection geometrics and traffic operations. The Department of Public Works request that the City of Waukesha Plan Commission review and act on the recommendation to convert Eales Avenue to a cul-de-sac and remove the Eales Avenue leg from the E.

Moreland Boulevard and White Rock Avenue intersection.



The City held a Public Involvement Meeting on September 30, 2015 for displaying and hearing feedback on the proposed improvement that removes the Eales Avenue leg from the E. Moreland Boulevard & White Rock Avenue intersection. The official summary of the Public Involvement Meeting is available for review upon request. In summary, a total of 15 people responded with written comments all were supportive of the closure, except one Cleveland Ave. resident and three Gas Station representatives.

A presentation was given to the Board of Public Works on November 5, 2015 to explain and hear feedback on the proposed improvement that removes the Eales Avenue leg from the E. Moreland Boulevard & White Rock Avenue intersection. The residents, businesses



and property owners that were invited to the Public Involvement Meeting on September 30, 2015 were also invited to the presentation to provide feedback. The Board of Public Works Committee was in favor of the proposed improvement that removes the Eales Avenue leg from the intersection and requested staff to work with the gas station on their concerns regarding their driveway access.

The City of Waukesha Engineering Division, Police Department and Fire Department recommend that Eales Avenue be converted to a cul-de-sac and be removed from the E. Moreland Boulevard & White Rock Avenue intersection to improve safety, intersection geometrics and traffic operations.

Options & Alternatives:

Plan Commission could recommend against converting Eales Ave. to a cul-de-sac.

Financial Remarks:

[Click here to enter text.](#)

Staff Recommendation:

Staff recommends that approval to convert Eales Avenue to a cul-de-sac and remove the Eales Avenue leg from the E. Moreland Boulevard and White Rock Avenue intersection.