



SITE DATA:

GROSS LOT AREA 24,486 Sq. Ft. (0.56 Acres)

ZONING RM-1

EXISTING IMPERVIOUS 12,132 Sq. Ft.

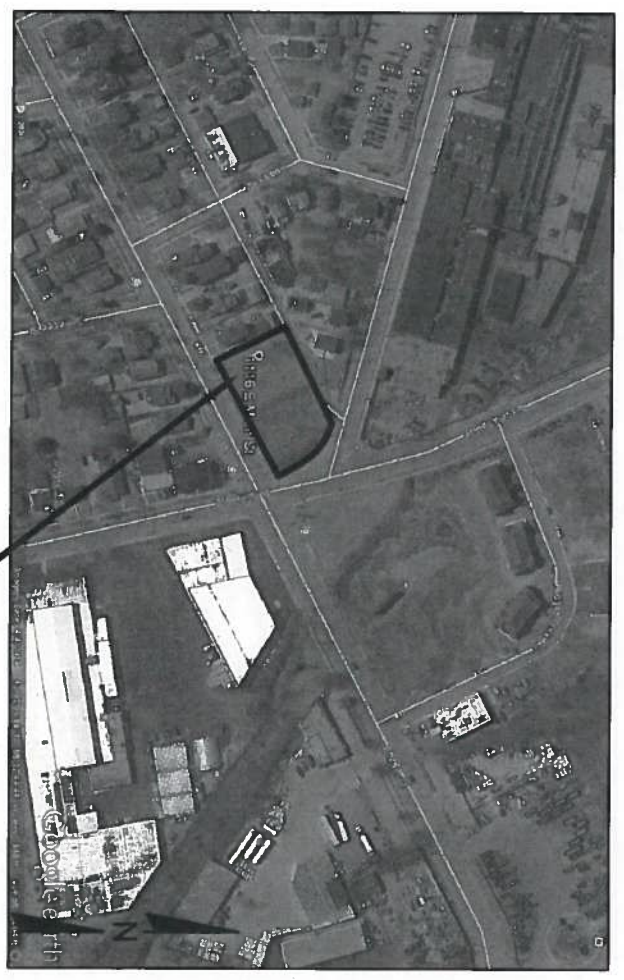
BUILDING FOOTPRINT 5,953 Sq. Ft.

PARKING AND WALKWAYS 7,648 Sq. Ft.

PROPOSED IMPERVIOUS 13,801 Sq. Ft.

GREEN SPACE 10,885 Sq. Ft. (44%)

EXTERIOR PARKING STALLS 12 STALLS BEHIND GARAGES



VICINITY MAP

SITE LOCATION:
1116 E. MAIN STREET
WAUKESHA, WISCONSIN
WAUKESHA COUNTY

DRAWING INDEX :

- C-2.0 SITE DEVELOPMENT PLAN
- PLAT OF SURVEY
- C-3.0 GRADING/DRAINAGE PLAN
- A-1.1 OVERALL FLOOR PLANS
- A-2.1 ELEVATIONS



LEGEND

- LARGE DECIDUOUS TREE 2 1/2' PLANNING SIZE
- ORNAMENTAL DECIDUOUS TREE 2' PLANNING SIZE
- LARGE CONIFER 4' PLANNING SIZE
- SMALL DECIDUOUS SHRUB 3/4' PLANNING SIZE
- ENGINEERED SHRUB 1/2' PLANNING SIZE
- SMALL CONIFER 1' PLANNING SIZE
- LARGE DECIDUOUS SHRUB 3/4' PLANNING SIZE
- SMALL DECIDUOUS SHRUB 3/4' PLANNING SIZE

REVISIONS:

NO.	NOTE	DATE

TJD ASSOCIATES, INC.
1116 E. MAIN STREET
WAUKESHA, WISCONSIN 53186
TEL: 262-533-2222
FAX: 262-533-2222
WWW.TJDASSOCIATES.COM

TJD ASSOCIATES, INC.
ARCHITECTURAL CORP./S.A. INC.
CITY OF WAUKESHA, WI
1116 MAIN STREET

SITE DEVELOPMENT PLAN

SCALE: 1" = 20' 0"
DESIGNED BY: ROB
DRAWN BY: ROB
APPROVED BY: [Signature]
JOB NO: 15-113-000
DATE: 12-8-17
CHECKED BY: [Signature]
DATE: [Signature]
SHEET C-20