



PROJECT INFORMATION

PROPOSED RESIDENTIAL SUBDIVISION FEASIBILITY FOR:
VERIDIAN HOMES, LLC
 WINTERBERRY DRIVE • WAUKESHA, WI

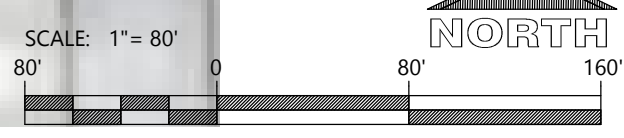
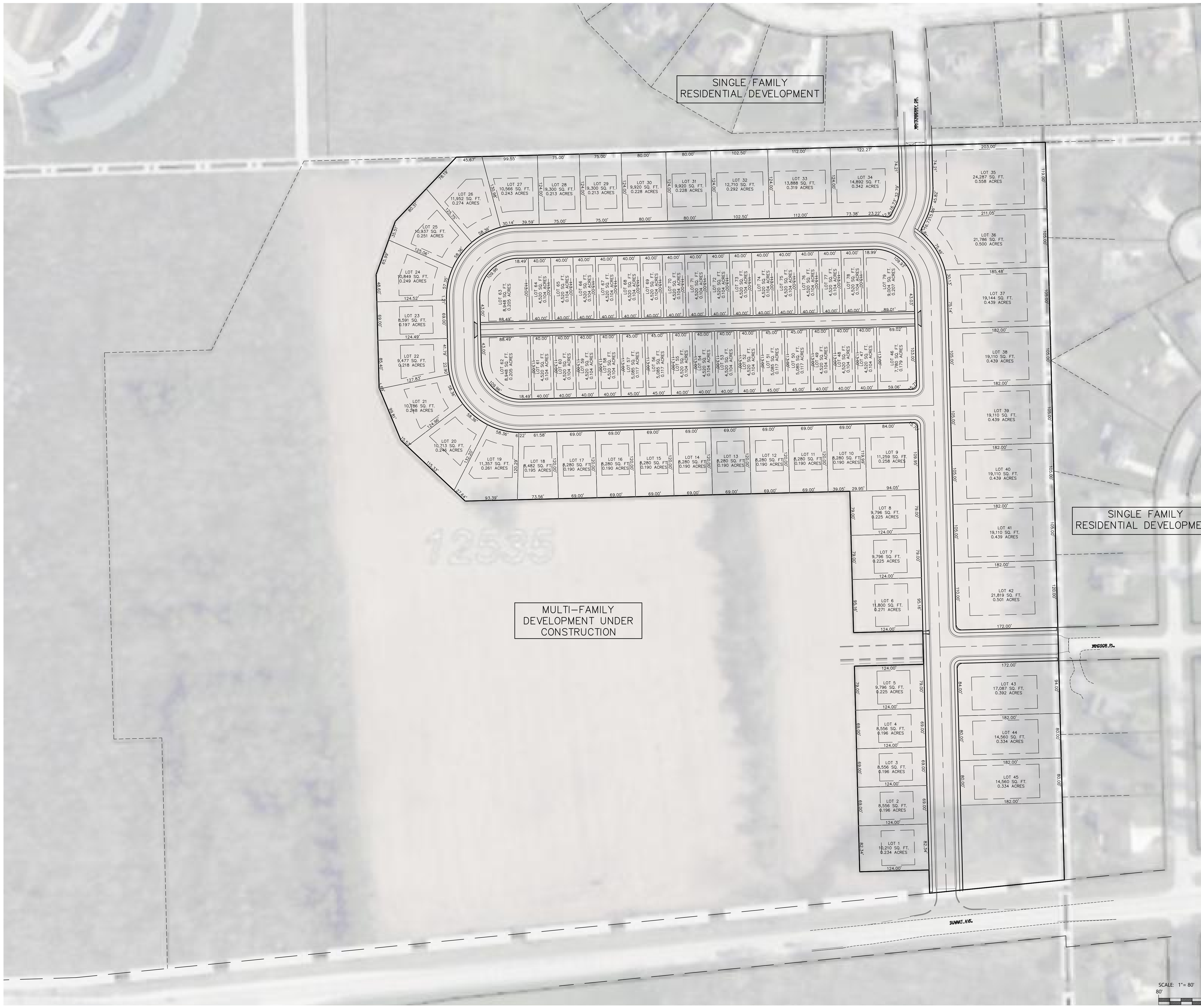
PROFESSIONAL SEAL

PRELIMINARY DATES
 JAN. 14, 2025

NOT FOR CONSTRUCTION

JOB NUMBER
 230103400

SHEET NUMBER
 L



LAYOUT