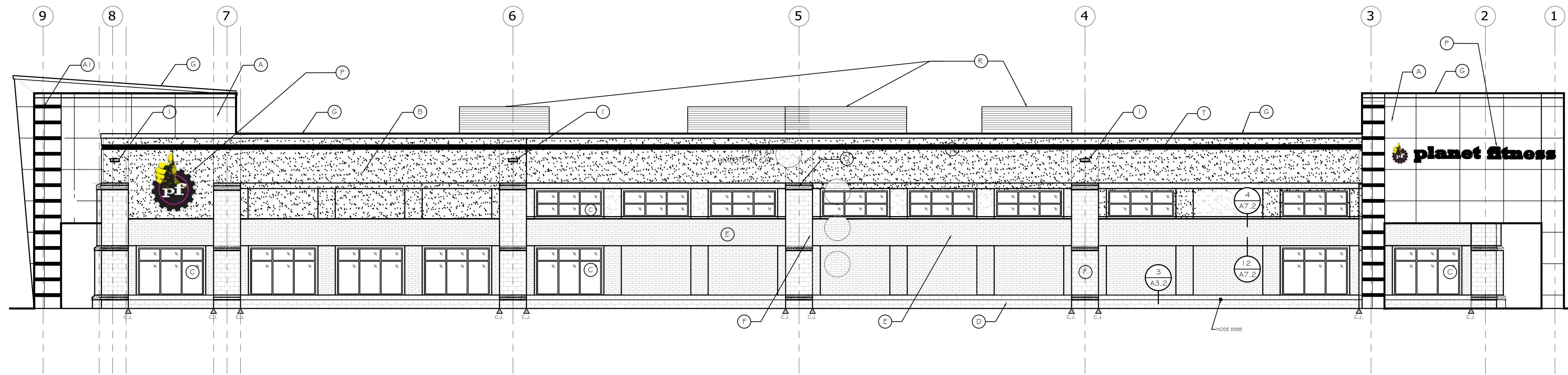


© 2019
This print is the
sole property of
RMA Architects, Inc.
Any reproduction,
copying, or use is
strictly prohibited
without written
permission.

RMA
ARCHITECTS
1050 SOUTH GRIDER STREET
APPLETON, WISCONSIN 54914
PHONE: 920-364-9850

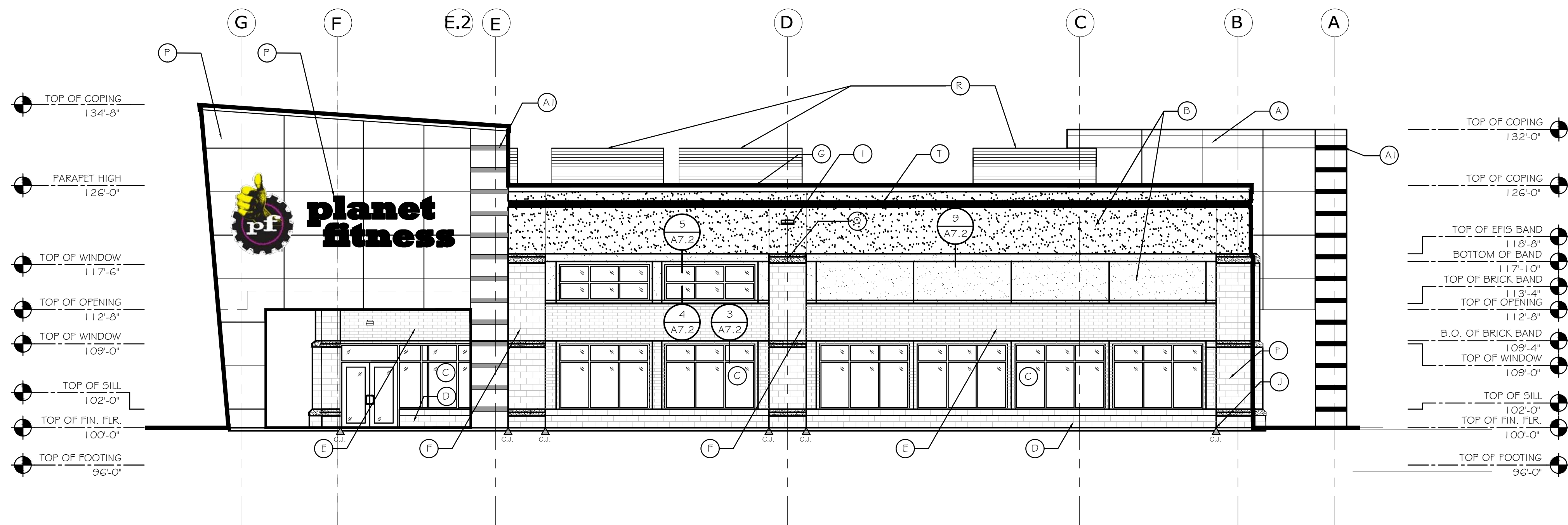


RIGHT/SOUTH ELEVATION 2
SCALE: 1/8" = 1'-0" A3.1

* OWNER HAS FINAL DECISION ON COLORS

PLAN/MATERIALS LEGEND

- (A) ALUMINUM COMPOSITE PANELS (ACM), MANUFACTURER: ALUCOBOND, COLOR: ANODIZED CLEAR, TYPE TO BE - RAINSCREEN SYSTEM 1 - INSTALL DIRECTLY OVER WEATHER BARRIER SYSTEM ON 3/4" FIRE TREATED PLYWOOD.
- (A) ACCENT BAND - ALUMINUM COMPOSITE PANELS (ACM), MANUFACTURER: ALUCOBOND, COLOR: ANODIZED BLACK, TYPE TO BE - RAINSCREEN SYSTEM 1 - INSTALL DIRECTLY OVER WEATHER BARRIER SYSTEM ON 3/4" FIRE TREATED PLYWOOD.
- (B) EXTERIOR INSULATION FINISH SYSTEM, (EIFS): EQUAL TO "DRYVIT", FINISH TO BE "SANDBLAST", COLOR: E1, E1R, E2, E4, E5 - SAME - #132 - MOUNTAIN FOG.
- (C) ALUMINUM WINDOWS/STOREFRONT DOOR ASSEMBLY, MANUFACTURER: KAWNEER, SYSTEM - TRIFAB VERSAGLAZE - 45 IT WITH CENTER GLAZING, COLOR: BLACK ANODIZED #29.
- (D) CMU DECORATIVE BLOCK KNEE WALL, MANUFACTURER: COUNTY MATERIALS - "HERITAGE" COLLECTION, SIZE: FULL BED VENEER, 15 5/8" X 7 5/8" EQUAL TO: COLOR: "ASH BLEND", MORTAR COLOR: STANDARD GRAY, MUST SEAL CONCRETE BRICK.
- (E) THIN BRICK VENEER, MANUFACTURER: GLEN-GERY, SIZE: MODULAR - THIN BRICK = 1/2" X 2 1/4" X 7 5/8", COLOR: RUSTIC BURGUNDY THIN BRICK, MORTAR COLOR: STANDARD GRAY.
- (F) CMU PILASTER, SAME AS ITEM "D", CMU DECORATIVE KNEE WALL.
- (G) PREFINISHED METAL COPING, MANUF.: METAL-ERA COLOR: MATTE BLACK.
- (H) EGRESS LIGHT.
- (I) EXTERIOR DECORATIVE LIGHTING.
- (J) CONTROL JOINT, PROVIDE AS SHOWN IN MASONRY WITH BACKER ROD AND SEALANT, CAULK COLOR: TO MATCH ADJACENT SURFACES.
- (K) GAS METER, PAINT METER AND ASSOCIATED PIPING TO MATCH WALL COLOR.
- (L) WATER SERVICE.
- (M) ELECTRIC SERVICE.
- (N) STORM CONNECTION FOR ROOF DRAIN AND OVERFLOW - "LAMBS TONGUE".
- (O) FIRE DEPARTMENT CONNECTION FOR THE SPRINKLER SYSTEM.
- (P) EXTERIOR SIGNAGE & ELEC. REQUIREMENTS BY OTHERS.
- (Q) 12" LIMESTONE @ TOP OF PILASTER(S), COLOR: STANDARD LIMESTONE - SHAPE PER DRAWINGS.
- (R) ROOF TOP UNIT & SCREEN, COLOR: TO MATCH COPING - MATTE BLACK.
- (S) HOSE BIBB, FROST PROOF - REFER TO PLUMBING DRAWINGS FOR MORE INFORMATION.
- (T) 8" HIGH "ACCENT" BAND - COLOR TO BE PLANET FITNESS - YELLOW
- (U) SEE SHEET A7.1 FOR WINDOW INFORMATION



FRONT/WEST ELEVATION 1
SCALE: 1/8" = 1'-0" A3.1

FACING MANHATTAN DRIVE

BUILD-OUT FOR:

PLANET FITNESS - WAUKESHA
LOT 1 - EAST MAIN STREET
WAUKESHA, WI 53186

REVISIONS

DRAWN BY
TPH
CHECKED BY
TFM

DATE
04/04/19

PROJECT NO.
175060

PRELIMINARY
NOT FOR CONSTRUCTION

A3.1R