

SITE INFORMATION

USDA PLANT HARDINESS ZONE 5a [-20 to -15 Degrees F]
 LOT ZONING M-1 Light Manufacturing
 LOT AREA 345,267 SQ. FT. (8.39 Acres)
 SITE BUILDING AREA 5,820 SQ. FT.
 TOTAL IMPERVIOUS
 TOTAL GREENSPACE
 SITE LANDSCAPE PERCENTAGE
 TOTAL PARKING STALLS 77 STALLS

EXISTING CONDITIONS GENERAL NOTES

1. INFORMATION PERTAINING TO EXISTING CONDITIONS GIVEN ON THESE LANDSCAPE DRAWINGS REPRESENTS TO THE BEST OF OUR KNOWLEDGE THE ACTUAL EXISTING FIELD CONDITIONS. INSITE LANDSCAPE DESIGN, INC. MAKES NO WARRANTY AS TO THEIR ACCURACY. CONTRACTOR TO FIELD VERIFY EXISTING CONDITIONS IMPERATIVE TO THEIR NEW WORK. REPORT ANY DISCREPANCIES BETWEEN THE DRAWINGS AND FIELD CONDITIONS TO THE LANDSCAPE ARCHITECT FOR REVIEW. ANY WORK PERFORMED PRIOR TO RESOLUTION OF DISCREPANCIES BY THE LANDSCAPE ARCHITECT IS SUBJECT TO REMOVAL AND REPLACEMENT AT NO ADDITIONAL COST TO THE CONTRACTOR.
2. THE LOCATIONS OF EXISTING UTILITY INSTALLATIONS AS SHOWN ON THIS PLAN ARE APPROXIMATE. THERE MAY BE UNDERGROUND UTILITY INSTALLATIONS WITHIN THE PROJECT AREA OF DISTURBANCE THAT ARE NOT SHOWN. THE CONTRACTOR SHALL BE RESPONSIBLE FOR VERIFYING THE EXISTENCE AND LOCATION OF ALL UNDERGROUND UTILITIES.
3. VERIFY ALL EXISTING CONDITIONS, DIMENSIONS, AND ALIGNMENT OF WALLS. BRING ANY DISCREPANCIES TO THE LANDSCAPE ARCHITECTS ATTENTION PRIOR TO FABRICATION / CONSTRUCTION BEGINS.
4. VERIFY LOCATION OF ACCESS PANELS w/ MECHANICAL AND ELECTRICAL EQUIPMENT FOR ACCESSIBILITY OF MECHANICAL & ELECTRICAL ITEMS. VERIFY LOCATIONS OF ALL BURIED UTILITIES AND STRUCTURES AND LOCATIONS OF ALL OVERHEAD WIRES.
5. VERIFY LOCATION OF ALL EXISTING EASEMENTS.
6. INSITE LANDSCAPE DESIGN, INC. ASSUMES NO RESPONSIBILITY FOR DAMAGES, LIABILITY OR COSTS RESULTING FROM CHANGES OR ALTERATIONS MADE TO THIS PLAN WITHOUT THE EXPRESSED WRITTEN CONSENT OF INSITE LANDSCAPE DESIGN, INC.

DESIGN COMPLIANCE: THIS LANDSCAPE PLAN IS ACCURATE AND IN COMPLIANCE WITH THE CITY OF WAUKESHA LANDSCAPE REQUIREMENTS SET FOR IN SECTION 22.18 LANDSCAPING

22.18.4 REQUIRED LANDSCAPE PLANTING.
 (Am. #38-02) The number of plant materials required in order to achieve an appropriate and complete landscape plan for a site shall be provided so that plant materials shall consist of a mixture of trees, shrubs, and ground cover as approved by the Plan Commission. Business, industrial, institutional, and park development shall plant appropriate trees, shrubs, and ground cover—as approved by the Plan Commission—based on the size of the project.
 22.18.6 MINIMUM SIZE OF PLANTINGS. All plantings under this subsection shall be in accordance with the following:
 Deciduous trees shall be a minimum size of two and one half (2 1/2) inches in diameter at four and one half (4 1/2) feet above grade.
 Coniferous trees shall be a minimum of six (6) feet in height.
 Shrubs shall be a minimum of eighteen (18) inches in height or spread.
 Ornamental trees shall be a minimum size of one and one half (1 1/2) inches in diameter at four and one half (4 1/2) feet above grade.

CONTRACTOR NOTE: THE LANDSCAPE CONTRACTOR/GENERAL CONTRACTOR ARE RESPONSIBLE TO INSTALL THE LANDSCAPE AS PER THE APPROVED PLAN. IF ANY CHANGES OR DEVIATIONS ARE MADE FROM THE THIS APPROVED PLAN, THE LANDSCAPE CONTRACTOR / GENERAL CONTRACTOR ARE RESPONSIBLE FOR UPDATING THE PLANS ACCORDINGLY AND SUBMITTING THOSE REVISED PLANS FOR APPROVAL AND "SIGN OFF" WITH THE CITY OF WAUKESHA. THE LANDSCAPE CONTRACTOR / GENERAL CONTRACTOR ARE ALSO RESPONSIBLE FOR VERIFYING THAT ANY PLANT MATERIAL SUBSTITUTIONS OR MODIFICATIONS THAT ARE MADE TO THE APPROVED LANDSCAPE DESIGN DOCUMENTS WILL NOT CHANGE OR ALTER ANY OF THE REQUIRED SUPPORTING LANDSCAPE REQUIREMENT CALCULATIONS. UPON COMPLETION OF THE CONSTRUCTION PROJECT AND FILE THAT AFFIDAVIT WITH THE CITY OF WAUKESHA

LANDSCAPE PLAN GENERAL NOTES

PLANT MATERIAL SHOWN ON LANDSCAPE PLAN IS DEPICTED AT MATURE GROWTH.

1. AT LEAST SEVENTY-TWO HOURS PRIOR TO ANY EXCAVATION, CONTRACTOR SHALL VERIFY UTILITY LOCATIONS AS GIVEN BY THE ELECTRIC, GAS, TELEPHONE, WATER, SEWER, AND CABLE TELEVISION COMPANIES, UTILITIES OR ENTITIES. REVIEW WITH OWNER'S REPRESENTATIVE SITE MECHANICAL, SITE ELECTRICAL AND LIGHTING, SITE GRADING AND DRAINAGE, SITE IRRIGATION AND ALL OTHER DRAWINGS PERTAINING TO UNDERGROUND UTILITY LOCATIONS. RECORD SET OF INFORMATION THE SAME AS IN POSSESSION OF OWNER'S REPRESENTATIVE. ALSO REVIEW OWNER'S "MARK SETS" OF ALL OF THESE DRAWINGS IN POSSESSION OF THE CONTRACTOR OR OWNER. MARK ALL SUCH UTILITIES ON THE SITE PRIOR TO COMMENCING. COORDINATE WITH OWNER BEFORE AND DURING CONSTRUCTION. REPAIR ANY DAMAGE TO ANY SYSTEM THAT IS CAUSED BY LANDSCAPE CONTRACTOR AT NO COST TO OWNER.
2. ALL PLANTINGS SPECIFIED FOR THE ENTERPRISE MOBILITY PARKING LOT PROJECT PLANTING TABLES SHALL COMPLY WITH STANDARDS AS DESCRIBED IN AMERICAN STANDARD OF NURSERY STOCK ANSI Z60.1 2014 AND ANSI STANDARDS FOR PLANTING 2012.
3. ALL DEVIATIONS FROM THE APPROVED ENTERPRISE MOBILITY PARKING LOT PROJECT PLANS SHALL BE NOTED ON THE RECORD DRAWINGS BY THE CONTRACTOR AND MAY BE EXECUTED ONLY WITH PRIOR APPROVAL FROM THE LANDSCAPE ARCHITECT AND OWNER'S REPRESENTATIVE. VERBAL AGREEMENTS OR REVISIONS WITHOUT A CHANGE ORDER WILL NOT BE RECOGNIZED BY LANDSCAPE ARCHITECT AND OWNER.
4. ALL PLANTS MUST BE BID AND SELECTED PER THE SPECIES SPECIFIED ON THE PLANS. ANY SPECIES SUBSTITUTIONS MUST BE APPROVED IN WRITING BY LANDSCAPE ARCHITECT. THE SIZES OF PLANT MATERIAL LISTED HEREIN IS A MINIMUM ACCEPTABLE SIZE. ADDITIONALLY, IF EXCESSIVE PRUNING REDUCES THE CROWN THE PLANT SHALL BE REPLACED.
5. PROTECT PUBLIC FROM CONSTRUCTION WITH BARRIERS AND BARRICADES.
6. ALL AREAS THAT WERE DISTURBED DURING CONSTRUCTION AND AREAS NOT COVERED WITH PAVEMENT, BUILDING, PLANTING BEDS, OR TREE PITS ARE TO BE TOPSOILED 3" DEEP (MIN.) AND SHALL BE SODDED/SEEDED WITH SPECIFIED LAWN GRASS. LANDSCAPE CONTRACTOR SHALL INCLUDE COST PER SQUARE YARD FOR ADDITIONAL SEED OPERATIONS AS MAY BE POSSIBLY REQUIRED TO REESTABLISH ADJACENT TURF GRASS AREAS WHICH MAY BECOME DAMAGED DURING THE CONSTRUCTION PROCESS OR TO REPAIR DAMAGE DONE BY OTHERS.
7. CONTRACTOR IS RESPONSIBLE FOR FURNISHING ALL MATERIALS, TOOLS, EQUIPMENT, LABOR, AND PLANTS NECESSARY FOR PROPER PLANTING AND INSTALLATION OF ALL LANDSCAPE MATERIAL.
8. QUANTITIES ON PLANT MATERIALS LIST ARE FOR CONVENIENCE OF BIDDING ONLY. CONTRACTOR IS RESPONSIBLE FOR ALL PLANTS SHOWN ON LANDSCAPE PLANS AND COVERAGE OF ALL AREAS DELINEATED. THE PLANS ARE TO SUPERSEDE THE PLANT LIST IN ALL CASES.
9. CONTRACTOR IS RESPONSIBLE FOR ALL ESTIMATING AND BIDDING, ALL AREAS, QUANTITIES MATERIALS SHOULD BE FIELD VERIFIED WITH SITE CONDITION.
10. WHERE DISCREPANCIES OCCUR BETWEEN THE LANDSCAPE PLANS AND/OR ARCHITECTURAL AND/OR THE CIVIL DRAWINGS (AND ANY OTHER SITE DRAWINGS) THE DISCREPANCIES MUST BE BROUGHT TO THE LANDSCAPE ARCHITECTS ATTENTION FOR COORDINATION AND RESOLUTION.
11. ALL DISEASED, NOXIOUS OR INAPPROPRIATE MATERIALS SHALL BE REMOVED FROM THE PROPOSED SITE PRIOR TO THE START OF CONSTRUCTION AND DURING THE MAINTENANCE PERIOD.
12. GENERAL CONTRACTOR SHALL LEAVE THE SITE FREE OF CONSTRUCTION DEBRIS.
13. ALL LAWN AND PLANTING AREAS SHALL SLOPE TO DRAIN A MINIMUM OF 2% UNLESS NOTED OTHERWISE AND REVIEWED WITH OWNER'S REPRESENTATIVE FOR FINAL APPROVAL.
14. FINISH GRADES FOR SHRUB AND GROUND COVER AREAS SHALL BE HELD 1" BELOW TOP OF ADJACENT PAVEMENTS AND CURBS, UNLESS NOTED OTHERWISE ON THE PLANS. REFER TO LSP1.2 FOR FURTHER INFORMATION.
15. ALL PERENNIAL, ANNUAL AND GROUND COVER AREAS TO RECEIVE A BLEND OF ORGANIC SOIL AMENDMENTS PRIOR TO PLANTING. TILL THE FOLLOWING MATERIALS INTO EXISTING TOPSOIL TO A DEPTH OF APPROXIMATELY 8". A DEPTH OF 12" IN TREE PITS. PROPORTIONS AND QUANTITIES MAY REQUIRE ADJUSTMENT DEPENDING ON THE CONDITION OF EXISTING SOIL. REFER TO LSP1.2 FOR FURTHER INFORMATION.
PER EVERY 100 SQUARE FEET ADD: ONE - 2 CUBIC FOOT BALE OF PEAT MOSS, 2 POUNDS OF 5 -10 -5 GARDEN FERTILIZER, 1/4 CUBIC YARD OF COMPOSTED MANURE OR OTHER COMPOSTED, ORGANIC MATERIAL.
16. ALL SHRUBS TO BE POCKET PLANTED WITH A 50/50 MIX OF COMPOSTED, ORGANIC MATERIAL AND EXISTING SOIL. INSTALL TOPSOIL INTO ALL BEDS AS NEEDED TO ACHIEVE PROPER GRADE. REMOVE ALL EXCESSIVE GRAVEL, CLAY AND STONES. REFER TO LSP1.2 FOR FURTHER INFORMATION.
17. PLANT ALL TREES SLIGHTLY HIGHER THAN FINISHED GRADE AT ROOT FLARE. BACK FILL HOLE WITH 2/3 EXISTING TOPSOIL AND ORGANIC SOIL AMENDMENTS SPECIFIED IN NOTE 15. AVOID ANY AIR POCKETS. DISCARD ANY GRAVEL CLAY OR STONES. REFER TO LSP1.2 FOR FURTHER INFORMATION.
18. ALL TREES TO BE INSTALLED, STAKED AND GUYED ACCORDING TO DETAILS. REFER TO ANSI STANDARDS FOR PLANTING 2012 AND DETAILS ON LSP1.2 FOR FURTHER INFORMATION.
19. PROVIDE A 4'-0" - 5'-0" DIAMETER MULCH RING AT THE ROOT BALL FLARE OF ALL LAWN TREES.
20. ALL PLANTINGS TO BE WATERED AT THE TIME OF PLANTING, THROUGHOUT CONSTRUCTION AND UPON COMPLETION OF PROJECT AS REQUIRED.
21. WHERE SPECIFIED, ALL PLANT BEDS, PITS AND TREE RINGS ARE TO RECEIVE A MINIMUM OF 2" - 3" DRESSING OF SHREDED HARDWOOD OAK BARK MULCH SHAVINGS FREE OF GROWTH, WEEDS, FOREIGN MATTER DETRIMENTAL TO PLANT LIFE OR GERMINATION INHIBITING INGREDIENTS. LANDSCAPE CONTRACTOR TO PROVIDE A SAMPLE TO OWNER FOR APPROVAL. CONTRACTOR TO TAKE CARE WITH INSTALLATION NOT TO DAMAGE OR COVER PLANTS. REFER TO LSP1.2 FOR FURTHER INFORMATION.
22. LAWN INSTALLATION: CONTRACTOR TO FURNISH AND PREPARE TOPSOIL (3" MIN) AND SEED BED (REMOVE ALL STONES 1" OR LARGER), APPLY STARTER FERTILIZER AND SEED UNIFORMLY. PROVIDE A MULCH COVERING SUITABLE TO GERMINATE AND ESTABLISH TURF. EROSION CONTROL MESH SHOULD BE USED IN SWALES AND STEEP GRADES WHERE APPLICABLE. METHODS OF INSTALLATION MAY VARY AT THE DISCRETION OF CONTRACTOR. IT IS HIS/HER RESPONSIBILITY TO ESTABLISH AND GUARANTEE A SMOOTH, UNIFORM, QUALITY TURF. IF STRAW MULCH IS USED AS A COVERING, A TACKIFIER MAY BE NECESSARY TO AVOID WIND DAMAGE.
23. **DELUXE 50 GRASS SEED MIX REINDER'S (800) 785-3301**
 20% KENTUCKY BLUE GRASS
 15% NEWPORT KENTUCKY BLUE GRASS
 15% SR 2100 Kentucky Bluegrass
 25% Creeping Red Fescue
 15% Replicator Perennial Ryegrass
 10% Fiesta 4 Perennial Ryegrass
 APPLY AT A RATE OF 200 POUNDS PER ACRE. REFER TO SUPPLIERS SPECIFICATIONS & INSTALLATION CUT SHEETS FOR FURTHER FORMATION
24. DURING THE INITIAL "30 DAY MAINTENANCE PERIOD" THE LANDSCAPE CONTRACTOR IS REQUIRED TO PROVIDE AND ON-GOING PLEASANT VISUAL ENVIRONMENT WHEREAS ANY PLANT WHICH IS NOT RESPONDING TO TRANSPLANTING OR THRIVING SHALL IMMEDIATELY BE REPLACED. NEW LAWNS SHALL BE WATERED AND REPAIRED AND WEEDS MUST CONSTANTLY BE REMOVED, NO EXCEPTIONS WILL BE GRANTED.
MAINTENANCE NOTE:
 MAINTENANCE IS THE RESPONSIBILITY OF THE PROPERTY OWNER TO MAINTAIN REQUIRED LANDSCAPING IN ACCORDANCE WITH THE MUNICIPALITY'S PROPERTY MAINTENANCE CODE AND AN APPROVED MAINTENANCE PLAN. THE MAINTENANCE MUST INCLUDE, AT A MINIMUM, METHODS FOR PROVIDING THE FOLLOWING:
 - NECESSARY IRRIGATION (IF REQUIRED)
 - INTEGRATED PEST MANAGEMENT,
 - PROPER FERTILIZATION
 - TREE CARE AND PRUNING, SHRUB TIP CLIPPING AND SHAPING AS REQUIRED
 - REPLACEMENT OF LOST VEGETATION, AND ALL DISEASED, DAMAGED, OR DEAD MATERIAL WILL BE REPLACED BY THE END OF THE FOLLOWING PLANTING SEASON IN PERPETUITY.
 - WEED MANAGEMENT AND BED CARE.
25. ALL NEWLY PLANTED TREES AND SHRUBS ARE TO RECEIVE AN APPLICATION OF AN ANTI-TRANSPIRANT SPRAY THAT WILL EFFECTIVELY REDUCE THE WATER LOSS OF TRANSPIRATION OF PLANT MATERIAL AND REDUCE THE STRESS OF TRANSPLANTATION. IT IS RECOMMENDED AS PART OF THE ONGOING MAINTENANCE THAT ANY BROADLEAF EVERGREEN AND CONIFEROUS TREE AND SHRUBS (EXCLUDING ARBORVITAE) RECEIVE AN APPLICATION OF AN ANTI-DESICANT SPRAY TO REDUCE THE LOSS OF MOISTURE DUE TO WINTER DESICCATION.
26. MAINTENANCE. THE OWNER SHALL TEND AND MAINTAIN ALL PLANT MATERIALS IN A HEALTHY GROWING CONDITION AS PER THE APPROVED PLAN. PLANTINGS SHALL BE REPLACED WHEN NECESSARY AND KEPT FREE FROM REFUSE & DEBRIS. ALL PLANTING MATERIAL WHICH IS DYING OR DAMAGED BEYOND RECOVERY SHALL BE REPLACED WITHIN SIX (6) MONTHS OR BY THE NEXT PLANTING SEASON, WHICHEVER COMES FIRST.
27. LANDSCAPE / SITE DEMOLITION CONTRACTOR TO VERIFY LOCATIONS OF EXISTING TREES AND SHRUBS TO BE SALVAGED AND CLEARLY TAG THEM WITH MARKING TAPE AND CONSTRUCTION FENCE.

INSITE
 LANDSCAPE DESIGN
 Landscape Consulting
 & Master Planning Design Services
 11525 W. North Avenue, Suite 1B
 Wauwatosa, WI 53226
 Tel (414) 476-1204
 www.insitedesigninc.com
 mdavis@insitedesigninc.com

Project:

ENTERPRISE MOBILITY

1060 Lincoln Avenue
 Waukesa, WI 53186

Issuance and Revisions:

Date	Number	Description
07/29/24		Plan Commission Submittal

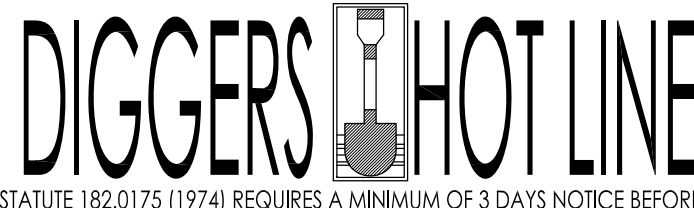

ALL RIGHTS RESERVED
 COPYRIGHT InSite Landscape Design Inc. 2020
 THIS DRAWING IS NOT TO BE REPRODUCED, CHANGED, COPIED OR ASSIGNED TO ANY THIRD PARTY IN ANY FORM OR MANNER WITHOUT FIRST OBTAINING THE EXPRESSED WRITTEN PERMISSION OF InSite Landscape Design, Inc. THE CLIENT AGREES TO INDEMNIFY AND HOLD THE InSite Landscape Design Inc. HARMLESS FROM ANY DAMAGES, LIABILITY OR COST, INCLUDING ATTORNEY'S FEES AND COSTS OF DEFENSE ARISING FROM ANY CHANGES OR ALTERATIONS MADE BY ANYONE OTHER THAN THE InSite Landscape Design Inc. OR FROM ANY REUSE OF THE DRAWINGS OR DATA WITHOUT THE PRIOR WRITTEN CONSENT OF THE InSite Landscape Design Inc.

Sheet Title:

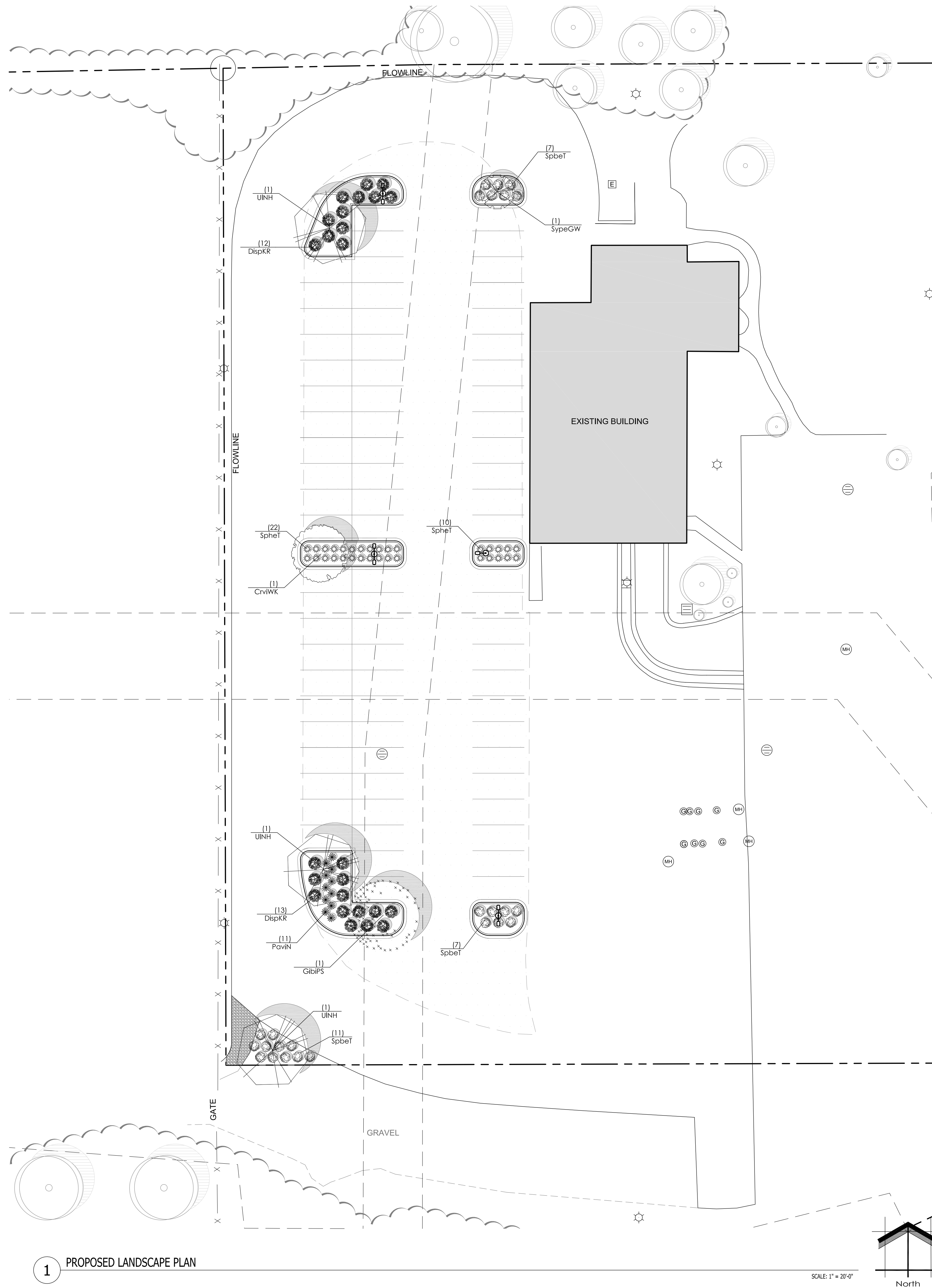
PROPOSED LANDSCAPE PLAN,
 GENERAL NOTES,
 AND PLANT MATERIAL TABLE

Date of Drawing: 07/29/24
 Scale: 1" = 20'-0"
 Drawn By: MCD
 Job Number: L24-054
 Sheet Number:

LGD1.0

TO OBTAIN LOCATION OF PARTICIPANT'S UNDERGROUND FACILITIES BEFORE YOU DIG IN WISCONSIN  WISCONSIN STATUTE 182.0175 (1974) REQUIRES A MINIMUM OF 3 DAYS NOTICE BEFORE YOU EXCAVATE (NOT INCLUDING SATURDAY, SUNDAY OR LEGAL HOLIDAYS)	UNDERGROUND SEWER AND UTILITY INFORMATION AS SHOWN IS OBTAINED FROM THE RECORDS OF MUNICIPALITY AND LOCAL UTILITY COMPANIES. THE ACCURACY OF WHICH CAN NOT BE GUARANTEED OR CERTIFIED TO. THE LOCATIONS OF EXISTING UTILITY INSTALLATIONS AS SHOWN ON THIS SURVEY ARE APPROXIMATE. THERE MAY BE OTHER UNDERGROUND UTILITY INSTALLATIONS WITHIN THE PROJECT AREA THAT ARE NOT SHOWN.	TO OBTAIN LOCATION OF PARTICIPANT'S UNDERGROUND FACILITIES BEFORE YOU DIG IN WISCONSIN CALL THE MILWAUKEE UTILITY ALERT NETWORK www.DiggersHotline.com (800) 242-8511 OR  Know what's below. Call 811 before you dig.
--	---	---

NOT FOR CONSTRUCTION - PRELIMINARY - FOR ESTIMATING AND REVIEW ONLY - DO NOT SCALE THESE DRAWINGS - These progress documents reflect progress & intent & may be subject to change, including additional notes and detail. These are not final construction documents and should not be used for final bidding or construction-related purposes.



Proposed Plant Material Table

Quantity	Code Name	Symbol	Scientific Name	Common Name	Planting Size	Comments
1	CrvWK	○	<i>Crataegus viridis</i> 'Winter King'	Winter King Green Hawthorn	2 1/2'-Cal - B&B	1
1	GibiPS	○	<i>Ginkgo biloba</i> 'Princeton Sentry'	Princeton Sentry Maidenhair Tree	2 1/2'-Cal - B&B	1.5
1	SypeGW	○	<i>Syringa pekinensis</i> 'Great Wall'	Great Wall Tree Lilac	2 1/2'-Cal - B&B	1
2	UINH	○	<i>Ulmus</i> 'New Horizon'	New Horizon Elm	2 1/2'-Cal - B&B	1
6	Extg	○	Existing to Remain	Existing to Remain	Existing	2

Quantity	Code Name	Symbol	Scientific Name	Common Name	Planting Size	Comments
25	DispKR	○	<i>Diervilla splendens</i> 'G2X885411'	Kodiak Red Diervilla	18" - Cont	3
20	SpbeT	○	<i>Spiraea betulifolia</i> 'Tor'	Tor Birchleaf Spiraea	18" - Cont	3

Quantity	Code Name	Symbol	Scientific Name	Common Name	Planting Size	Comments
11	PavN	○	<i>Panicum virgatum</i> 'Northwind'	Northwind Switch Grass	1-Gal - Cont	4
32	SpheT	○	<i>Sporobolus heterolepis</i> 'Tara'	Tara Prairie Dropseed	1-Gal - Cont	4

- Comments
1. Straight central leader, full & even crown. Prune only after planting.
 2. Prune existing tree, remove any dead, diseased or hazardous limbs. Thin out as required and raise canopy for safety and viability for both pedestrians and motorists.
 3. Full, well rooted plant, evenly shaped.
 4. Full, well rooted plant.
 5. Male only

INSITE
LANDSCAPE DESIGN
Landscape Consulting
& Master Planning Design Services
11525 W. North Avenue, Suite 1B
Wauwatosa, WI 53226
Tel (414) 476-1204
www.insitedesigninc.com
mdavis@insitedesigninc.com

Project:
ENTERPRISE MOBILITY
1060 Lincoln Avenue
Waukesa, WI 53186

Issuance and Revisions:

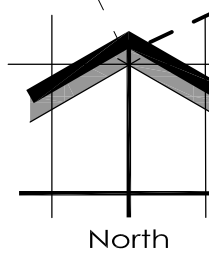
Date	Number	Description
07/29/24		Plan Commission Submittal

COPYRIGHT InSite Landscape Design Inc. 2020
ALL RIGHTS RESERVED
THIS DRAWING IS NOT TO BE REPRODUCED, CHANGED, COPIED OR ASSIGNED TO ANY THIRD PARTY IN ANY FORM OR MANNER WITHOUT FIRST OBTAINING THE EXPRESSED WRITTEN PERMISSION OF InSite Landscape Design, Inc. THE CLIENT AGREES TO INDEMNIFY AND HOLD THE InSite Landscape Design, Inc. HARMLESS FROM ANY DAMAGES, LIABILITY, OR COST, INCLUDING ATTORNEY'S FEES AND COSTS OF DEFENSE ARISING FROM ANY CHANGES OR ALTERATIONS MADE BY ANYONE OTHER THAN THE InSite Landscape Design, Inc. OR FROM ANY REUSE OF THE DRAWINGS OR DATA WITHOUT THE PRIOR WRITTEN CONSENT OF THE InSite Landscape Design Inc.

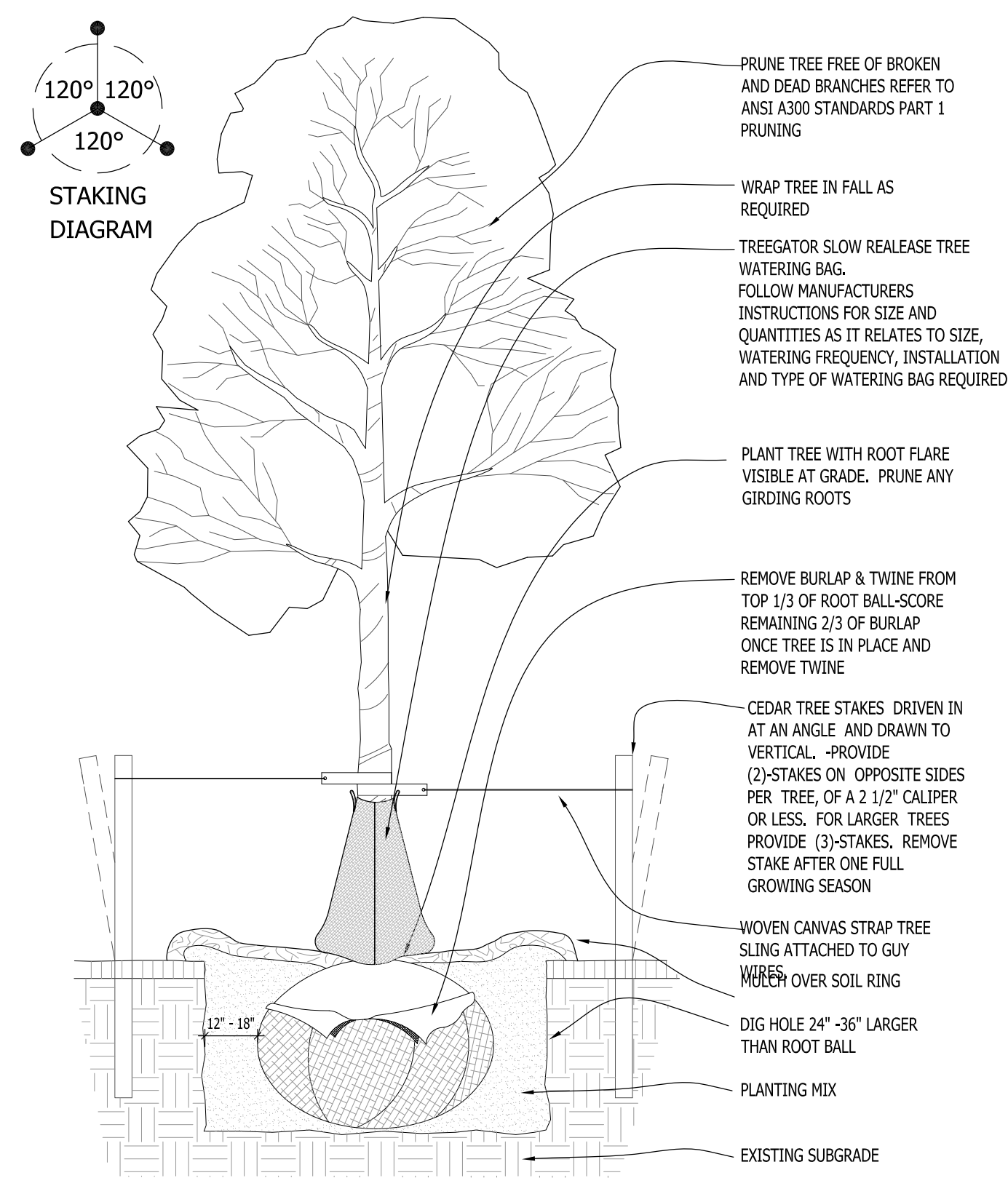
Sheet Title:
PROPOSED LANDSCAPE PLAN,
GENERAL NOTES,
AND PLANT MATERIAL TABLE

Date of Drawing: 07/29/24
Scale: 1" = 20'-0"
Drawn By: MCD
Job Number: L24-054
Sheet Number:

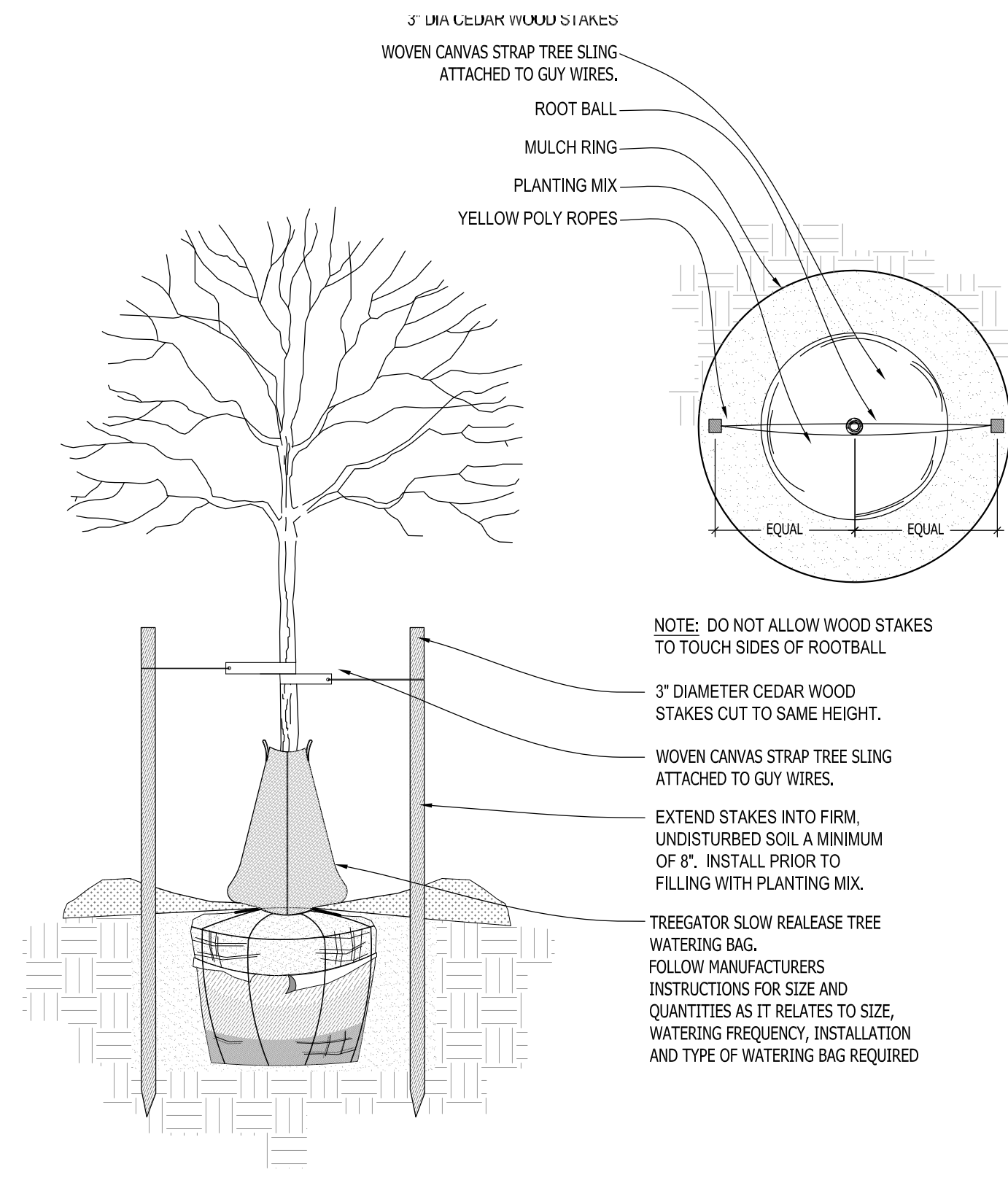
LSP1.1



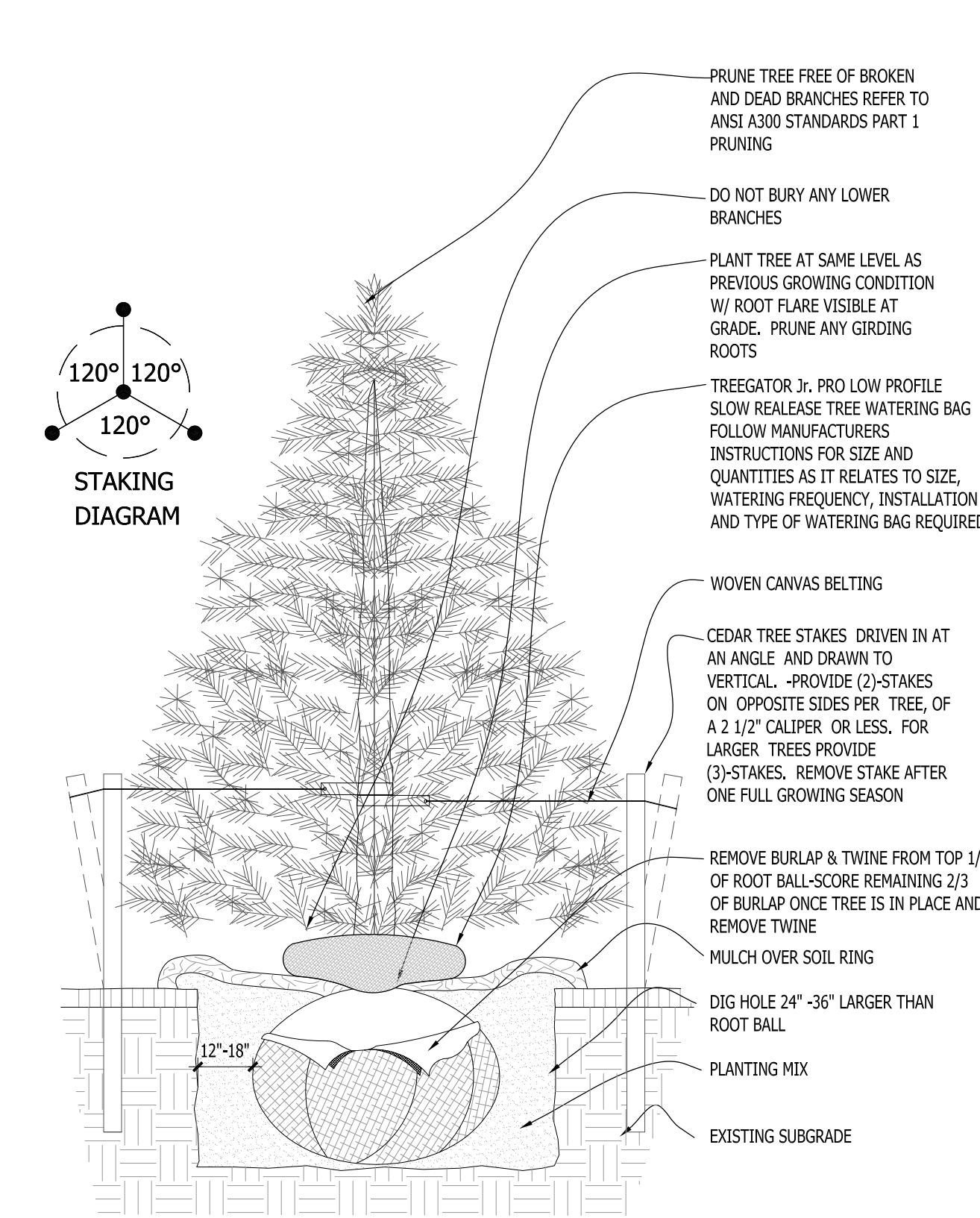
NOT FOR CONSTRUCTION - PRELIMINARY - FOR ESTIMATING AND REVIEW ONLY - DO NOT SCALE THESE DRAWINGS - These progress documents reflect progress & intent & may be subject to change, including additional notes and detail. These are not final construction documents and should not be used for final bidding or construction-related purposes.



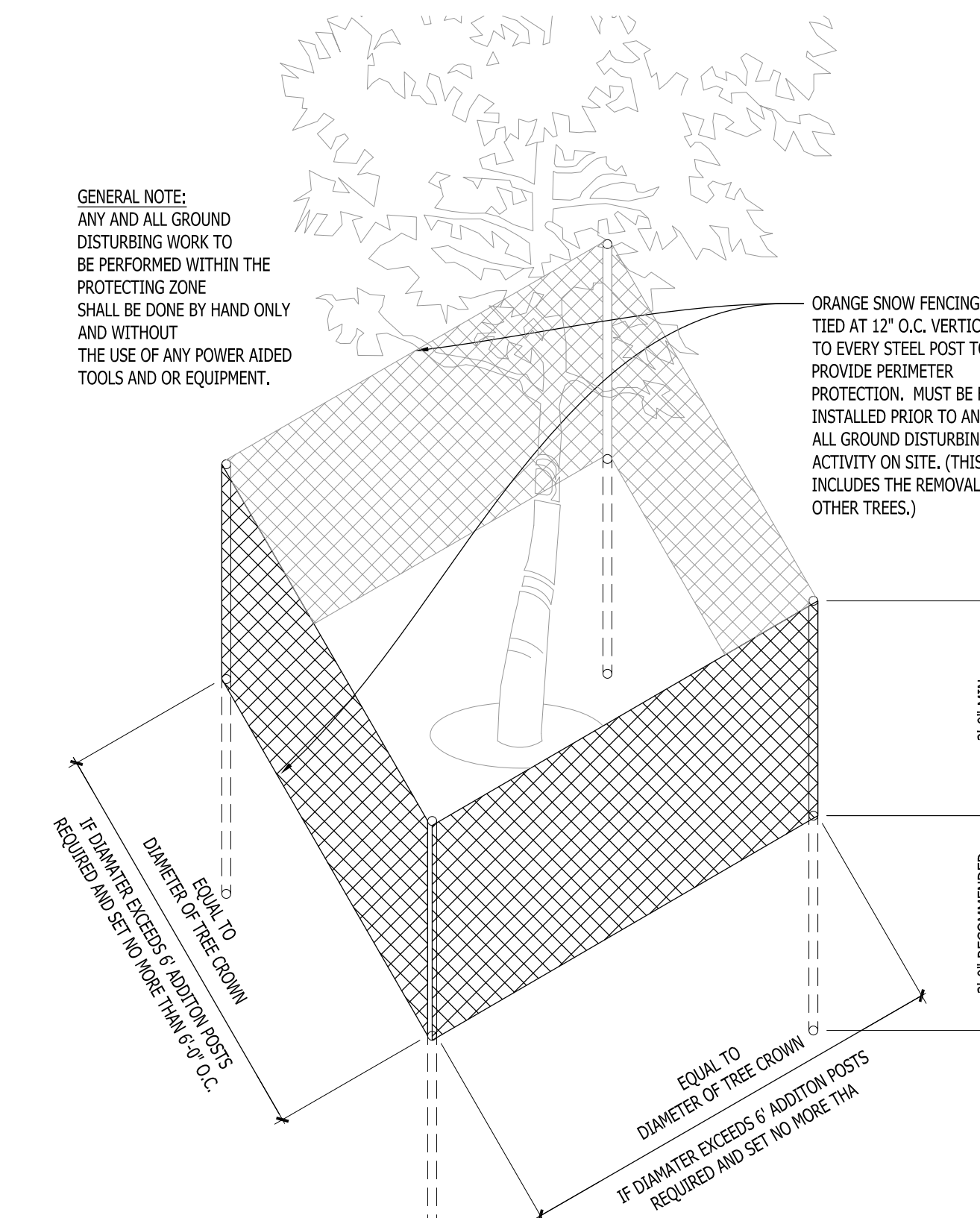
1 DECIDUOUS TREE PLANTING DETAIL SCALE: NONE



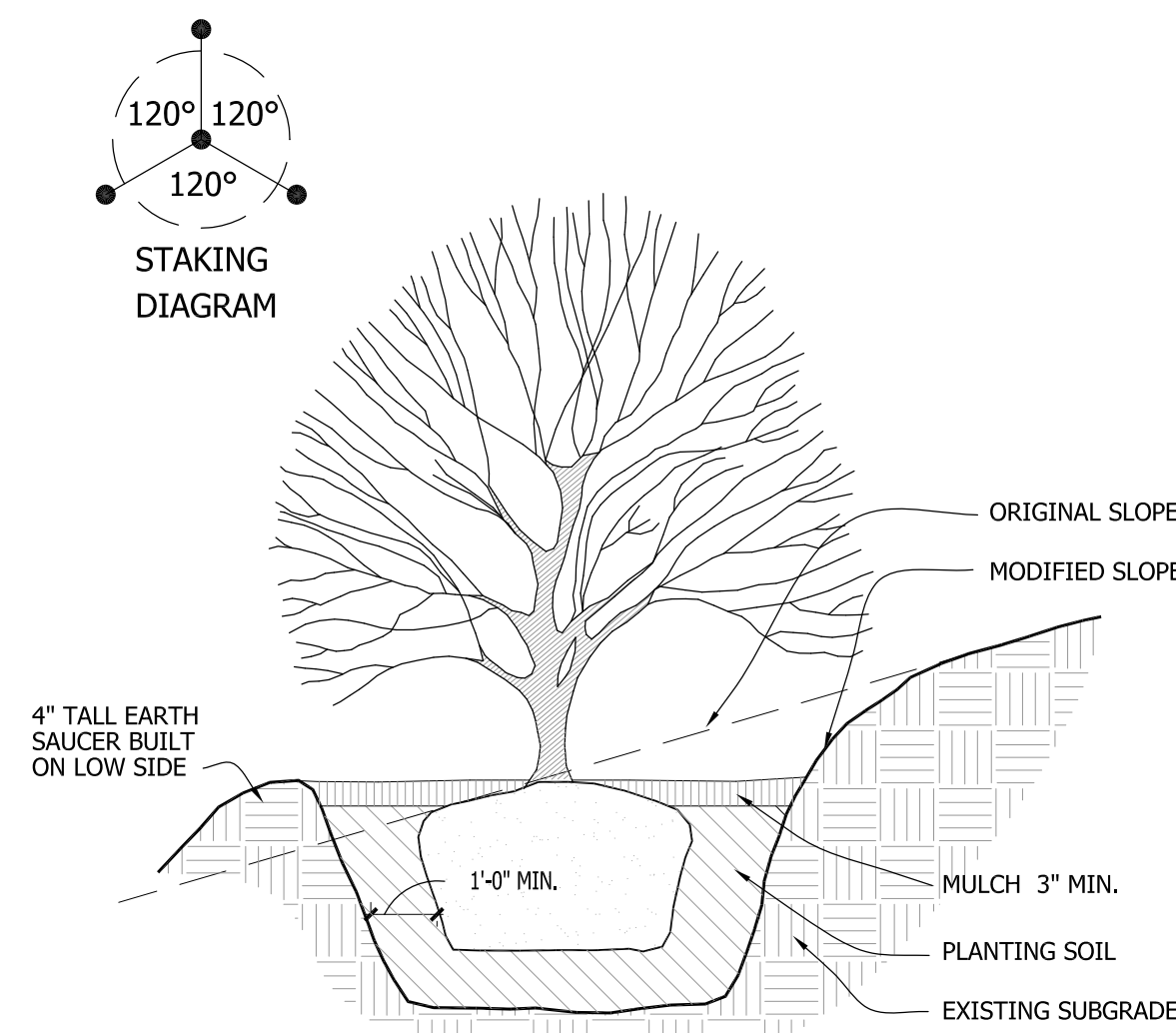
2 DECIDUOUS TREE STAKING PARKING ISLAND/RESTRICTED AREAS SCALE: NONE



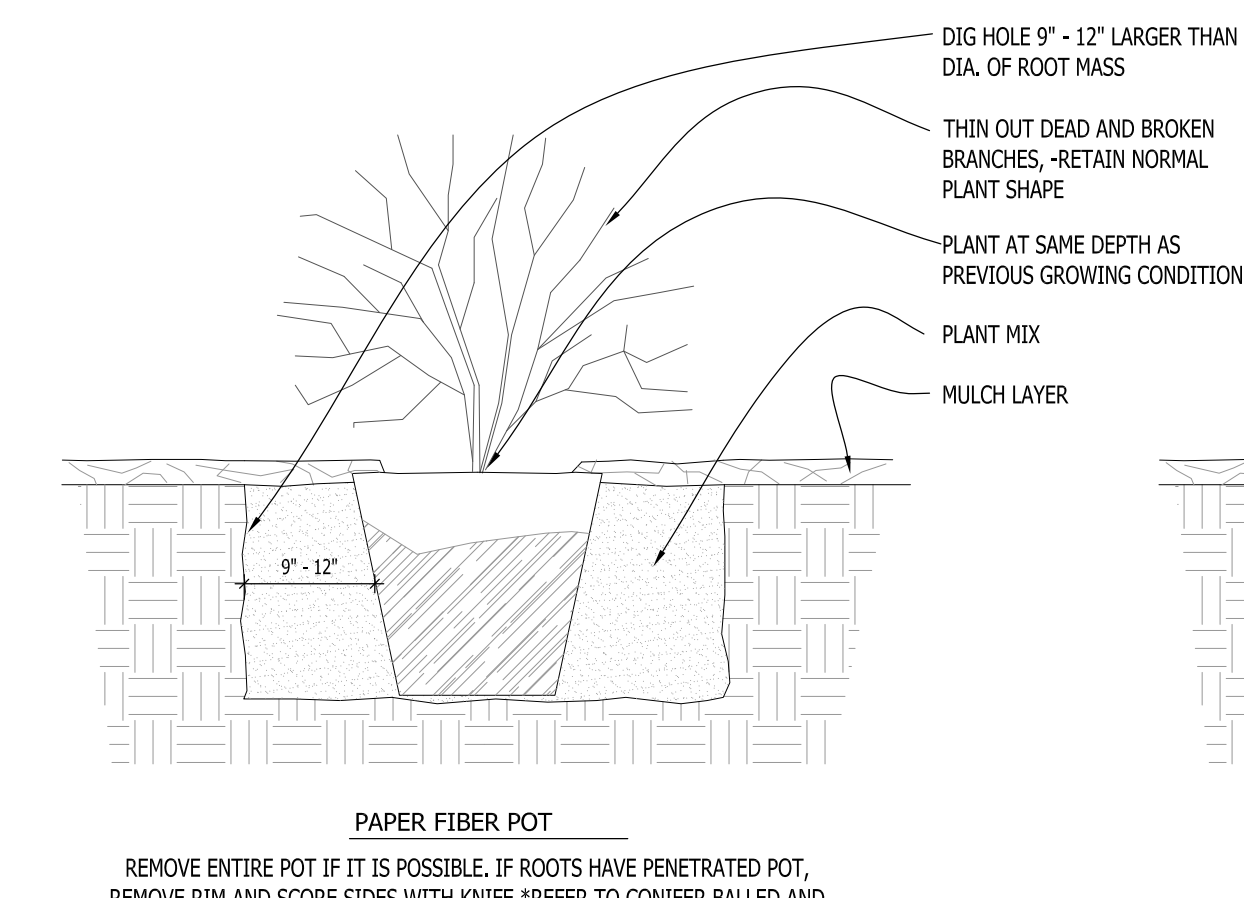
3 CONIFEROUS TREE PLANTING DETAIL SCALE: NONE



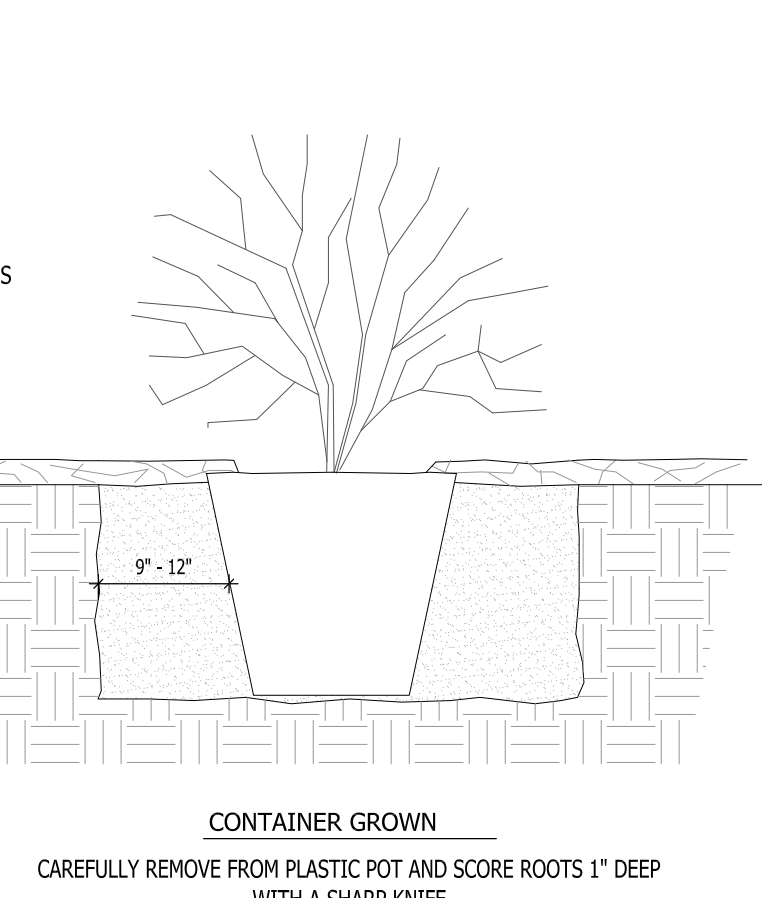
4 EXISTING TREE PROTECTION DETAIL SCALE: NONE



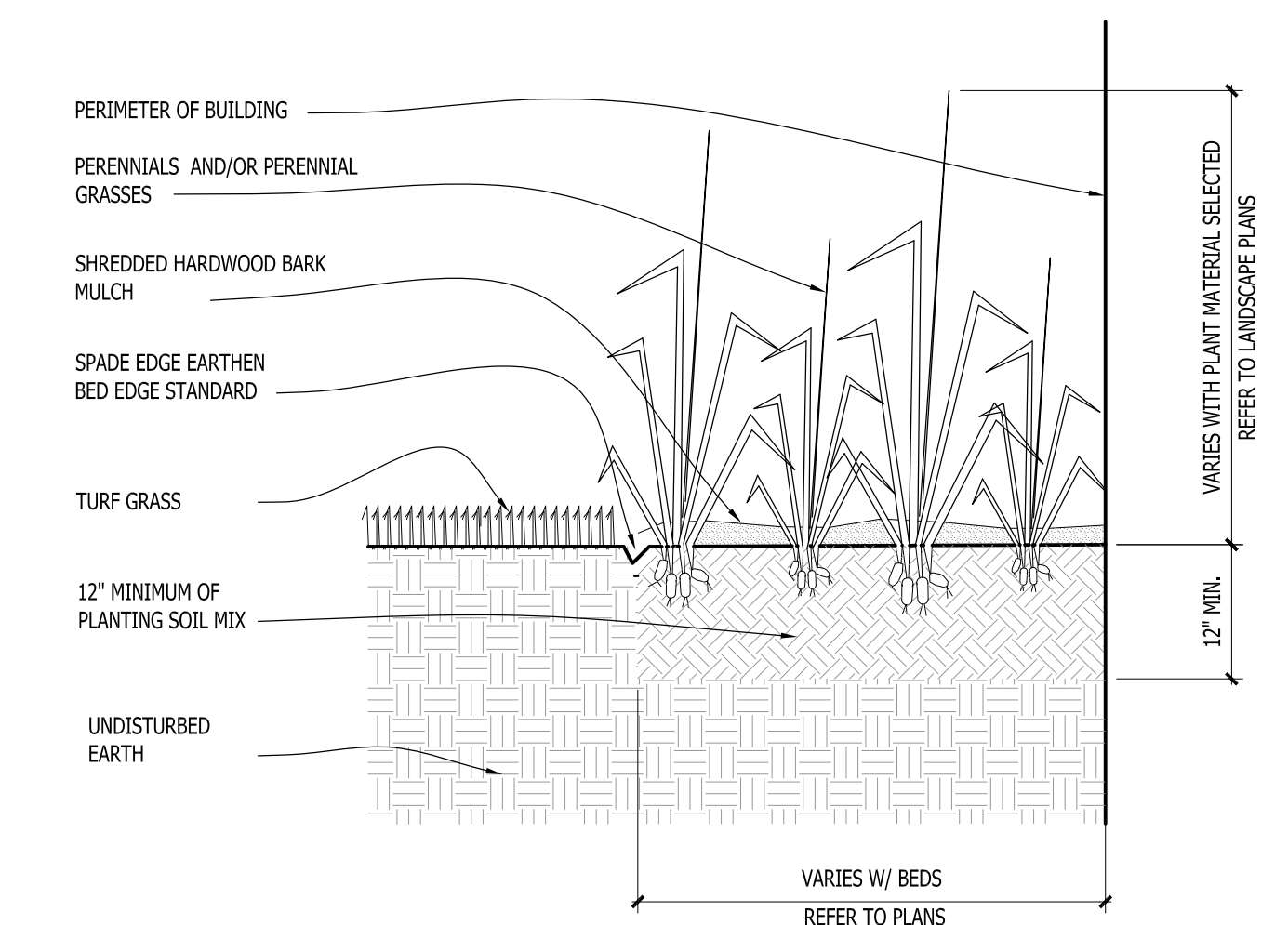
5 SLOPE PLANTING DETAIL SCALE: NONE



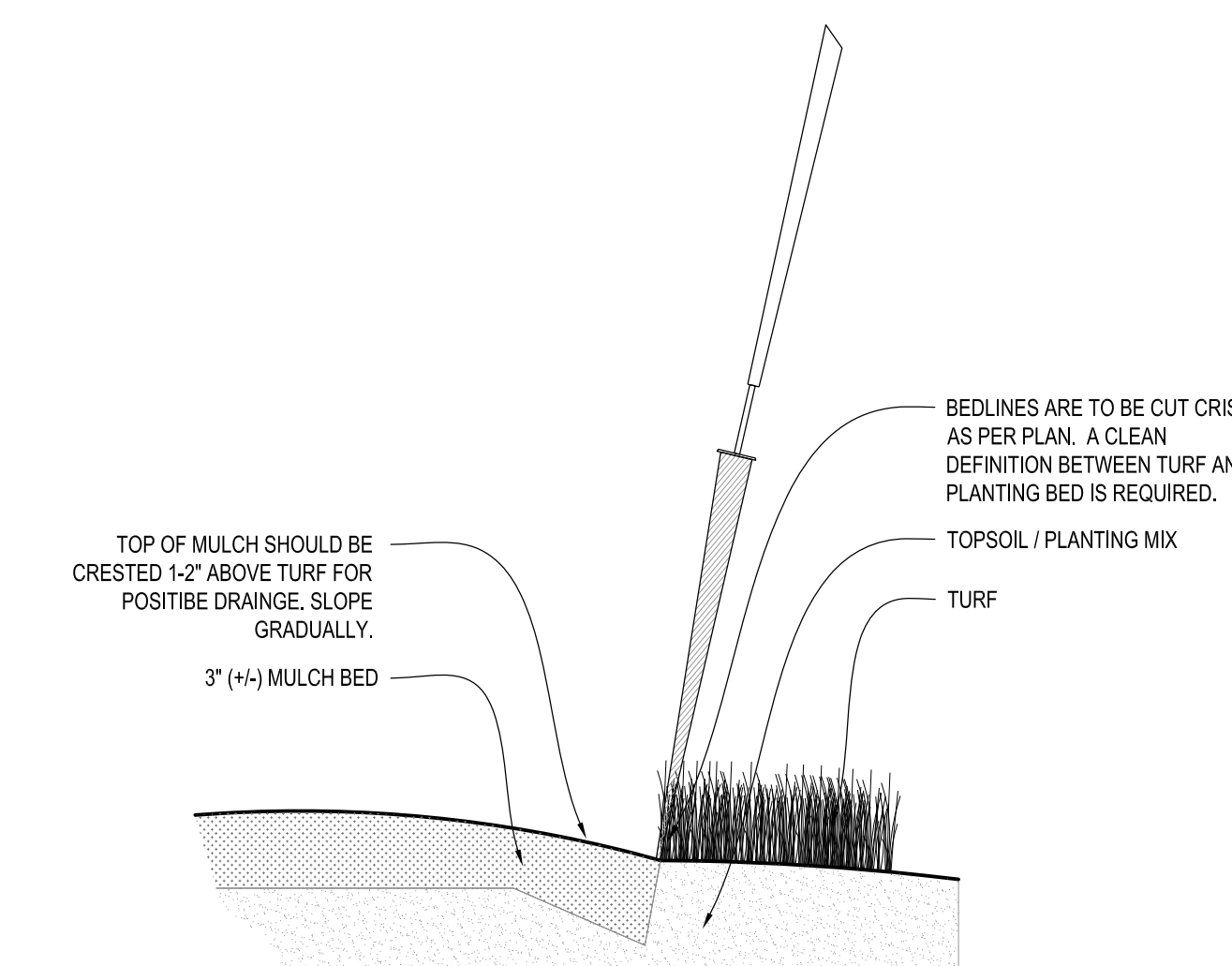
6 DECIDUOUS SHRUB PLANTING DETAIL SCALE: NONE



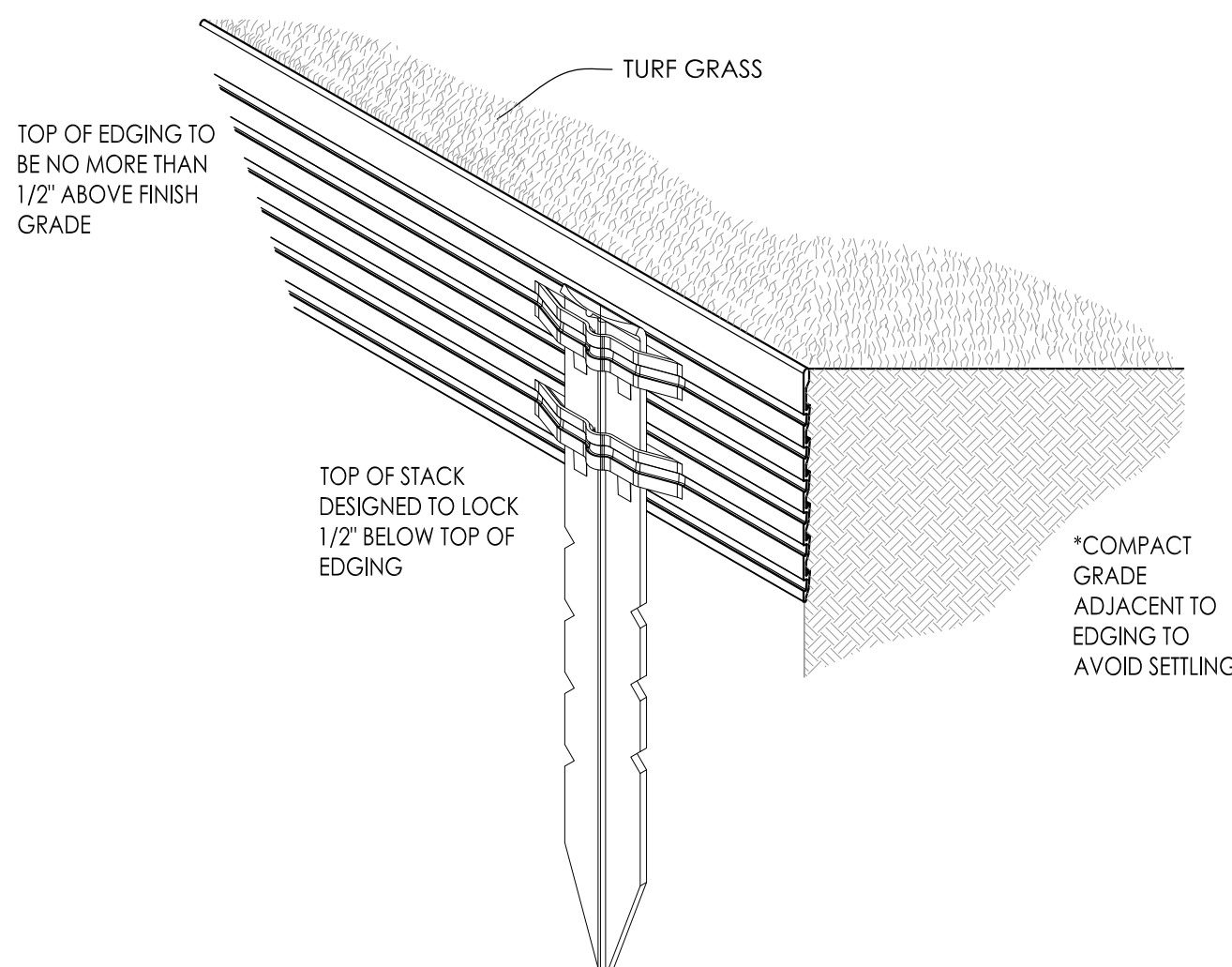
7 CONIFEROUS SHRUB PLANTING DETAIL SCALE: NONE



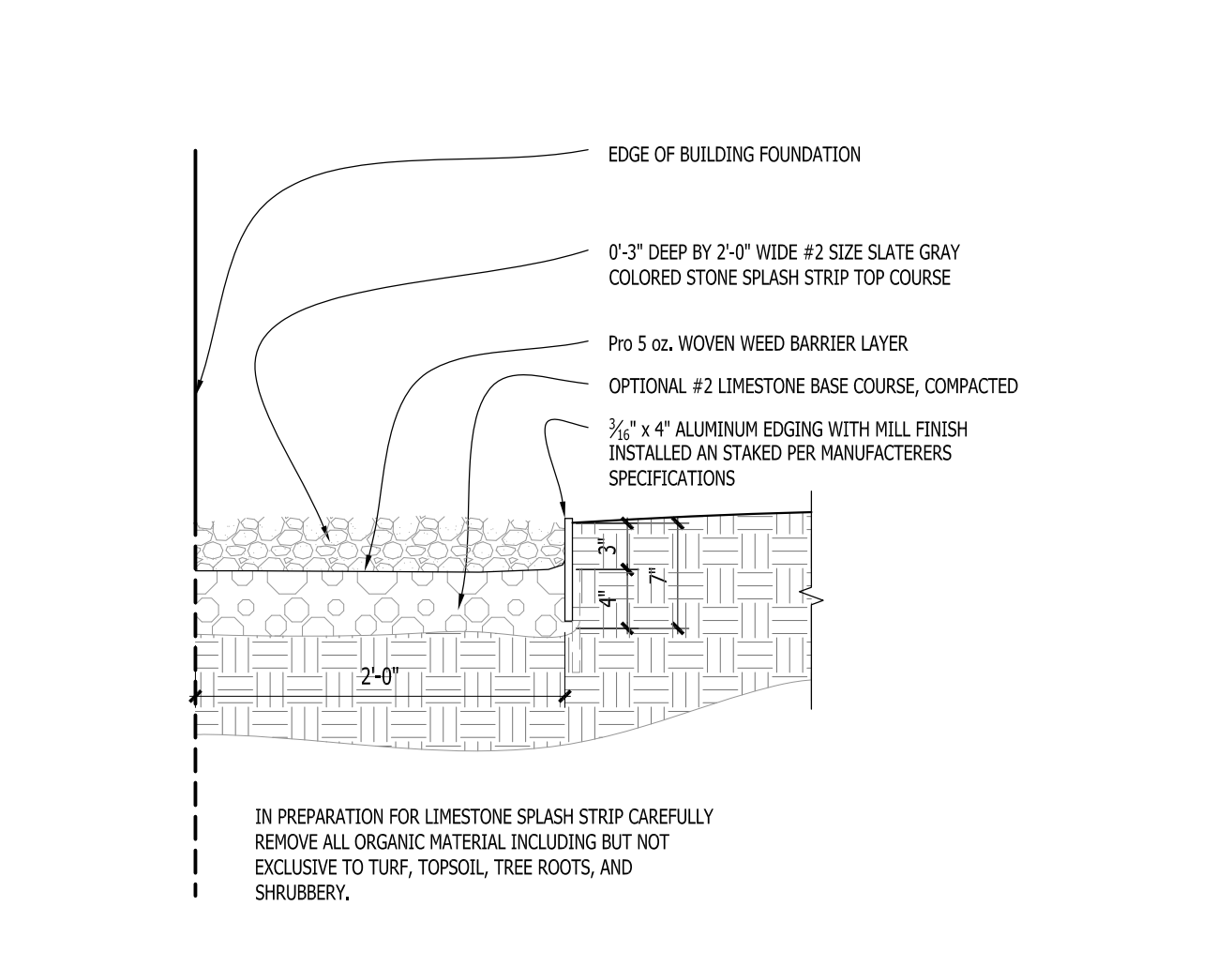
8 PERENNIAL BED PLANTING DETAIL SCALE: NONE



9 SPADE EDGE PLANT BED EDGE DETAIL SCALE: NONE



10 METAL LANDSCAPE EDGING DETAIL SCALE: 1/2" = 1'-0"



11 COMPACTED GRAVEL SPLASH STRIP SCALE: 1" = 1'-0"

Issuance and Revisions:

Date	Number	Description
07/29/24		Plan Commission Submittal

COPYRIGHT InSite Landscape Design Inc. 2020
ALL RIGHTS RESERVED
THIS DRAWING IS NOT TO BE REPRODUCED, CHANGED, COPIED OR ASSIGNED TO ANY THIRD PARTY IN ANY FORM OR MANNER WITHOUT FIRST OBTAINING THE EXPRESSED WRITTEN PERMISSION OF InSite Landscape Design, Inc. THE CLIENT AGREES TO INDEMNIFY AND HOLD THE InSite Landscape Design Inc. HARMLESS FROM ANY DAMAGES, LIABILITY, OR COST, INCLUDING ATTORNEY'S FEES AND COSTS OF DEFENSE ARISING FROM ANY CHANGES OR ALTERATIONS MADE BY ANYONE OTHER THAN THE InSite Landscape Design Inc. OR FROM ANY REUSE OF THE DRAWINGS OR DATA WITHOUT THE PRIOR WRITTEN CONSENT OF THE InSite Landscape Design Inc.

Sheet Title:
PROPOSED LANDSCAPE PLAN,
PLANTING DETAILS

Date of Drawing: 07/29/24
Scale: As Noted
Drawn By: MCD
Job Number: L24-054
Sheet Number:

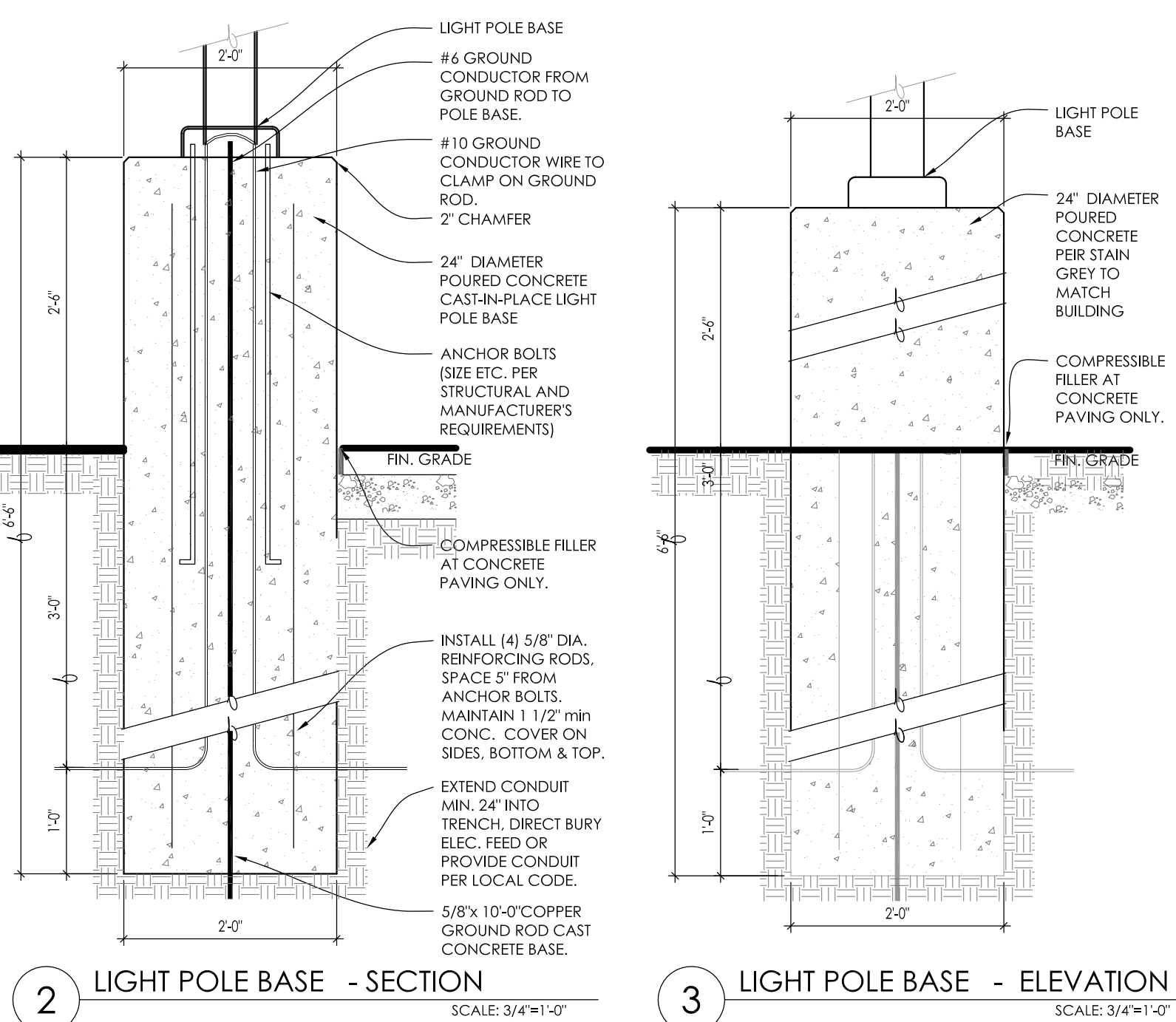
NOT FOR CONSTRUCTION - PRELIMINARY - FOR ESTIMATING AND REVIEW ONLY - DO NOT SCALE THESE DRAWINGS - These progress documents reflect progress & intent & may be subject to change, including additional notes and detail. These are not final construction documents and should not be used for final bidding or construction-related purposes.



1 PROPOSED PHOTOMETRIC LIGHT LEVELS CALCULATIONS PLAN

SCALE: 1" = 20'-0"
North

LUMINAIRE SCHEDULE									
Symbol	Label	Qty	Catalog Number	Description	Lamp	File	Lumens	LLF	Watts
	A	1	Existing	16" PARKING/ROADWAY OPTIC	Existing	PR640-250.ies	40000	1.00	450
EXISTING TWIN HEAD FIXTURE WITH 30 DEGREE TILT SHOWN FOR CLARITY									
	B	4	Existing	16" PARKING/ROADWAY OPTIC	Existing	PR640-250.ies	40000	1.00	450
EXISTING TWIN HEAD FIXTURE WITH 30 DEGREE TILT SHOWN FOR CLARITY									
	C	1	EACL01_F4AF750	EACL AREA LIGHT	LEDs	EACL01_F4AF750_s	Absolute	1.00	122
PROPOSED NEW FIXTURE AT NE LOCATION									
	D	3	EACL01_F4AF750	EACL AREA LIGHT	LEDs	EACL01_F4AF750_s	Absolute	1.00	244
PROPOSED NEW FIXTURE AT NE LOCATION									
STATISTICS									
Description	Symbol	Avg	Max	Min	Max/Min	Avg/Min			
Calc Zone #2	+	1.6 fc	14.6 fc	0.0 fc	N / A	N / A			
LUMINAIRE NOTES									
<ol style="list-style-type: none"> FIXTURE "A" (1) IS AN EXISTING SINGLE HEAD POLE AND CONCRETE FOUNDATION TO REMAIN AND IS SHOWN FOR CLARITY. FIXTURE "B" (3) IS AN EXISTING TWIN HEAD POLE (TILTED HEAD AT APPROX 35 DEGREES FACING INWARD) AND CONCRETE FOUNDATION TO REMAIN AND IS SHOWN FOR CLARITY. FIXTURE "C" (1) IS A NEW LOCATION w/ NEW POLE MOUNTED FIXTURE (SINGLE HEAD AND TENON). FIXTURES ARE TO BE INSTALLED ON A NEW 2'-8" TALL REINFORCED POURED CONCRETE FOUNDATION (FIELD VERIFY FOUNDATION HEIGHT TO MATCH EXISTING) AND NEW 20" SQUARE DARK BRONZE POLE (FIELD VERIFY POLE HEIGHT AND COLOR TO MATCH EXISTING). FIXTURE "D" (3) IS A NEW LOCATION w/ NEW POLE MOUNTED FIXTURES (TWIN HEAD AND TENONS AT 180 DEGREES). FIXTURES ARE TO BE INSTALLED ON A NEW 2'-8" TALL REINFORCED POURED CONCRETE FOUNDATION (FIELD VERIFY FOUNDATION HEIGHT TO MATCH EXISTING) AND NEW 20" SQUARE DARK BRONZE POLE (FIELD VERIFY POLE HEIGHT AND COLOR TO MATCH EXISTING). ALL PROPOSED FIXTURE HEADS ARE TO BE DARK-SKY COMPLIANT AND HAVE HARDWARE WITH IESNA FULL CUTOFF HOUSE SIDE SHIELDING WHERE REQUIRED. NEW PROPOSED POLE MOUNTED FIXTURES (HEADS AND TENONS) FINISH IS TO MATCH EXISTING w/ OPTIONAL PHOTOCELL CONTROL. ALL NEW CONCRETE LIGHT POLE BASES ARE TO HAVE ALL EXPOSED FORM MARKS REMOVED, GROUND FLUSH AND THE SURFACE IS TO BE PROPERLY PREPARED TO RECEIVE A HAND TROWELED, MASONRY SKIM COAT OF APPROPRIATE THICKNESS TO ACHIEVE A DURABLE SURFACE AND LONG LASTING AESTHETIC. ALL NEW PROPOSED AREA LIGHT POLES SHALL BE LOCATED 3'0" FROM BACK OF CURB TO THE EDGE OR FACE OF THE REINFORCED LIGHT POLE BASE UNLESS NOTED OTHERWISE. INSTALLATION CONTRACTOR TO REFER TO ELECTRICAL PLANS FOR CONDUIT ROUTING OF LIGHT POLES AND SIGNAGE LIGHTING CONTROL AND WIRING. CONTRACTOR TO REFER TO REINFORCED LIGHT POLE BASE SECTION AND DETAIL FOR FURTHER INFORMATION. PROPOSED POLE MOUNTED FIXTURES (HEADS AND TENONS) ARE TO HAVE A DARK BRONZE POLE (FIELD VERIFY POLE HEIGHT AND COLOR TO MATCH EXISTING) w/ OPTIONAL PHOTOCELL CONTROL. ALL NEW EXTERIOR FIXTURES, BOTH BUILDING MOUNTED AND POLE FIXTURES SHALL BE DESIGNED AND INSTALLED SUCH THAT THE LIGHT EMITTED FROM THE LUMINAIRE AT AN ANGLE OF 90 DEGREES FROM VERTICAL (OR MORE) AND NO LIGHT SHALL TRESPASS ACROSS PARCEL BOUNDARIES INTO ADJACENT LOTS, BUILDINGS OR STREETS IN EXCESS OF 1.0 FOOT CANDLE OR GREATER. ALL NEW BUILDING MOUNTED LIGHT FIXTURES ARE TO BE COORDINATED WITH THE ARCHITECTURAL ELEVATIONS FOR EXACT MOUNTING HEIGHTS AND LOCATIONS. 									
FOR PURPOSES OF CALCULATING THE SITE POLE LIGHTING AND PHOTOMETRIC OUTPUT LUMINAIRE WERE PLACED AT 22'-0" ABOVE FINISHED FLOOR ELEVATION.									
THIS LIGHTING PLAN REPRESENTS ILLUMINATION LEVELS ARE CALCULATED VALUES INCLUDE DIRECT AND INTER-REFLECTED COMPONENT AND ILLUMINATION LEVELS. CALCULATED FROM LABORATORY DATA TAKEN UNDER CONTROLLED CONDITIONS IN ACCORDANCE WITH THE ILLUMINATING ENGINEERING SOCIETY (IES) APPROVED METHODS. ACTUAL PERFORMANCE OF ANY MANUFACTURER'S LUMINAIRES MAY VARY DUE TO CHANGES IN ELECTRICAL VOLTAGE, TOLERANCE IN LAMPS/LED'S AND OTHER MAY VARY DUE TO CHANGES IN ELECTRICAL VOLTAGE, TOLERANCE IN LAMPS/LED'S AND OTHER VARIABLE FIELD CONDITIONS. CALCULATIONS DO NOT INCLUDE OBSTRUCTIONS SUCH AS BUILDINGS CURBS, LANDSCAPING, OR ANY OTHER ARCHITECTURAL ELEMENTS UNLESS NOTED.									
PHOTOMETRIC PLAN GENERAL NOTES									
<ol style="list-style-type: none"> BASED ON THE INFORMATION PROVIDED, ALL DIMENSIONS AND LUMINAIRE LOCATIONS SHOWN REPRESENT RECOMMENDED POLE PLACEMENTS AND LUMINAIRE ORIENTATION. THE ENGINEER AND/OR ARCHITECT MUST DETERMINE APPLICABILITY OF THE LAYOUT TO RELEVANT FIELD CONDITIONS. THE DEPICTED ILLUMINATION RESULTS ARE BASED UPON ILLUMINATION MEASUREMENTS AS CALCULATED BY AN INDEPENDENT LABORATORY. LUMINAIRE CHARACTERISTICAL DATA WAS MEASURED UNDER CONTROLLED CONDITIONS IN ACCORDANCE WITH APPROVED ILLUMINATION ENGINEERING SOCIETY METHODS. ACTUAL ON-SITE PERFORMANCE OF ANY MANUFACTURER'S LUMINAIRES MAY VARY FROM LABORATORY TEST RESULTS DUE TO VARIATIONS IN ELECTRICAL VOLTAGE, TOLERANCE IN LAMPS, AND OTHER VARIABLE FIELD CONDITIONS. IF EXISTING LUMINAIRES ARE INCLUDED IN THIS REPORT, THEIR ILLUMINATION CHARACTERISTICS ARE BASED UPON A COMBINATION OF CUSTOMER'S PROVIDED SPECIFICATIONS & OUR BEST ESTIMATION. ALL EXISTING AND NEW CONCRETE LIGHT POLE BASES ARE TO HAVE ALL FORM MARKS REMOVED, GROUND FLUSH AND THE SURFACE IS TO BE PROPERLY PREPARED TO RECEIVE A HAND TROWELED, MASONRY SKIM COAT OF APPROPRIATE THICKNESS TO ACHIEVE A DURABLE SURFACE AND LONG LASTING AESTHETIC. 									
EXISTING CONDITIONS GENERAL NOTES									
<ol style="list-style-type: none"> INFORMATION PERTAINING TO EXISTING CONDITIONS GIVEN ON THESE ARCHITECTURAL DRAWINGS REPRESENTS TO THE BEST OF OUR KNOWLEDGE THE ACTUAL EXISTING FIELD CONDITIONS. INSITE LANDSCAPE DESIGN, INC. MAKES NO WARRANTY AS TO THEIR ACCURACY. CONTRACTOR TO FIELD VERIFY EXISTING CONDITIONS IMPERATIVE TO THEIR NEW WORK. REPORT ANY DISCREPANCIES BETWEEN THE DRAWINGS AND FIELD CONDITIONS TO THE LANDSCAPE ARCHITECT FOR REVIEW. ANY WORK PERFORMED PRIOR TO RESOLUTION OF DISCREPANCIES BY THE LANDSCAPE ARCHITECT IS SUBJECT TO REMOVAL AND REPLACEMENT AT NO ADDITIONAL COST TO THE CONTRACT. VERIFY LOCATION OF ALL EXISTING UNDERGROUND UTILITIES I.E. WATER, SEWER, ELECTRICAL, TELECOMMUNICATION AND ACCESS PANELS FOR ALL UTILITIES AND ALL ASSOCIATED EQUIPMENT FOR ACCESSIBILITY OF THOSE ITEMS. VERIFY ALL EXISTING CONDITIONS, DIMENSIONS, AND ALIGNMENT OF WALLS. BRING ANY DISCREPANCIES TO THE LANDSCAPE ARCHITECTS ATTENTION PRIOR TO FABRICATION / CONSTRUCTION BEGINS. 									



2 LIGHT POLE BASE - SECTION SCALE: 3/4"=1'-0"

3 LIGHT POLE BASE - ELEVATION SCALE: 3/4"=1'-0"

Issuance and Revisions:

Date	Number	Description
07/29/24		Plan Commission Submittal

COPYRIGHT InSite Landscape Design Inc. 2020
ALL RIGHTS RESERVED
THIS DRAWING IS NOT TO BE REPRODUCED, CHANGED, COPIED OR ASSIGNED TO ANY THIRD PARTY IN ANY FORM OR MANNER WITHOUT FIRST OBTAINING THE EXPRESSED WRITTEN PERMISSION OF InSite Landscape Design, Inc. THE CLIENT AGREES TO INDEMNIFY AND HOLD THE InSite Landscape Design Inc. HARMLESS FROM ANY DAMAGES, LIABILITY OR COST, INCLUDING ATTORNEY'S FEES AND COSTS OF DEFENSE ARISING FROM ANY CHANGES OR ALTERATIONS MADE BY ANYONE OTHER THAN THE InSite Landscape Design Inc. OR FROM ANY REUSE OF THE DRAWINGS OR DATA WITHOUT THE PRIOR WRITTEN CONSENT OF THE InSite Landscape Design Inc.

Sheet Title:
PROPOSED PHOTOMETRIC LIGHT LEVEL CALCULATIONS PLAN, GENERAL NOTES, AND LIGHT FIXTURE TABLE

Date of Drawing: 07/29/24
Scale: 1" = 20'-0"
Drawn By: MCD
Job Number: L24-054
Sheet Number:

NOT FOR CONSTRUCTION - PRELIMINARY - FOR ESTIMATING AND REVIEW ONLY - DO NOT SCALE THESE DRAWINGS - These progress documents reflect progress & intent & may be subject to change, including additional notes and detail. These are not final construction documents and should not be used for final bidding or construction-related purposes.

EVOLVE
EACL® Series
LED Area Light/Compact Low Wattage

CUSTOMER NAME _____
PROJECT NAME _____ TYPE _____
DATE _____ CATALOG NUMBER _____

EACL® Series
LED Area Light/Compact Low Wattage

Current's EACL Series of Area Light Luminaire offers a wide range of optical patterns, color temperatures, lumen packages, and mounting configurations to optimize area light applications, as well as provide versatility in lighting design within the same form factor.

Construction
Housing: Die-cast aluminum housing with integral heat sink for maximum heat transfer.
Paint: Standard - Black, Dark Bronze Gray, White (RAL & custom colors available).
Weight: 18 lbs (8.16 kg) Max depending on configuration.

Lumen Maintenance
Projected Lx per IES TM-21-11 at 25°C

LUMEN CODES	LX/HOUR	25,000 HR	50,000 HR	60,000 HR
A2, A3, A4, B2, B3, B4, C2, C3, C4D2, D3, D4, E2, E3, E4, F2, F3, F4	L94	L90	L88	
H2/H3, H4	L97	L96	L96	

Optical System
Lumens: 2,900 - 20,400
Distribution: Asymmetric Forward Type IV, Asymmetric Wide Type II, Asymmetric Narrow/Auto Type II
Efficacy: 123 - 143 LPW
CCT: 3000K, 4000K, 5000K
CRI: >70

Electrical
Input Voltage: 120-277V & 347-480V
Input Frequency: 50/60Hz
Power Factor: > 90% at rated watts
Total Harmonic Distortion: < 20% at rated watts

Surge Protection*
Typical (125/375kV) | Enhanced (150/375kV)
6kV/35kA* | 10kV/35kA*

Warranty
5 Year (Standard)

Page 1 of 10
© 2023 Current Lighting Solutions, LLC. All rights reserved. Information and specifications subject to change without notice. All other trademarks are the property of their respective owners. **QDPS02-Evolve-LED-Area-Lighting-EACL-Spec-Sheet_S05**

EVOLVE
EACL® Series
LED Area Light/Compact Low Wattage

CUSTOMER NAME _____
PROJECT NAME _____ TYPE _____
DATE _____ CATALOG NUMBER _____

Ordering Information

EACL 01 0 F4 AF 7 50 N D D1 GRAY

PROD. ID	GEN.	VOLTAGE	OPTIC CODE	DISTRIBUTION	CCT (K)	CCT	DIMMING†	CONTROLS	MOUNTING	COLOR	OPTIONS
E-1 (3000K)	01	0-120-277V	As-3000K	As-3000K	3000K	3000K	1-1: 0-10V Dimming (0-100%)	1-1: None	1-1: 1/2" Mounting Hole (1/2" x 1/2" Hole)	Black/Gray	1-1: 1/2" Mounting Hole (1/2" x 1/2" Hole)
E-1 (4000K)	01	0-120-277V	As-4000K	As-4000K	4000K	4000K	1-1: 0-10V Dimming (0-100%)	1-1: None	1-1: 1/2" Mounting Hole (1/2" x 1/2" Hole)	Black/Gray	1-1: 1/2" Mounting Hole (1/2" x 1/2" Hole)
E-1 (5000K)	01	0-120-277V	As-5000K	As-5000K	5000K	5000K	1-1: 0-10V Dimming (0-100%)	1-1: None	1-1: 1/2" Mounting Hole (1/2" x 1/2" Hole)	Black/Gray	1-1: 1/2" Mounting Hole (1/2" x 1/2" Hole)

Page 2 of 10
© 2023 Current Lighting Solutions, LLC. All rights reserved. Information and specifications subject to change without notice. All other trademarks are the property of their respective owners. **QDPS02-Evolve-LED-Area-Lighting-EACL-Spec-Sheet_S05**

EVOLVE
EACL® Series
LED Area Light/Compact Low Wattage

CUSTOMER NAME _____
PROJECT NAME _____ TYPE _____
DATE _____ CATALOG NUMBER _____

OPTICAL CODE	BEST CODE	CLASSIFICATION	TYPICAL LUMENS			TYPICAL SYSTEM WATTAGE			BUG RATING	
			3000K	4000K	5000K	120-277V	347-480V	3000K	4000K	5000K
A4			2900	2900	2900	21	23	21	23	23
B4			4800	4800	4800	38	39	38	39	39
D4			7900	7900	7900	58	59	58	59	59
E4			9800	9800	9800	73	74	73	74	74
F4			15000	15000	15000	102	103	102	103	103

For additional information on Non-Shielded and Shielded EACL IES files, please refer to LEDcom.

Page 3 of 10
© 2023 Current Lighting Solutions, LLC. All rights reserved. Information and specifications subject to change without notice. All other trademarks are the property of their respective owners. **QDPS02-Evolve-LED-Area-Lighting-EACL-Spec-Sheet_S05**

EVOLVE
EACL® Series
LED Area Light/Compact Low Wattage

CUSTOMER NAME _____
PROJECT NAME _____ TYPE _____
DATE _____ CATALOG NUMBER _____

PE Accessories (To Be Order Separately)

SAP NUMBER	PART NUMBER	DESCRIPTION
9052952	WANS-277	ANSI B824-Dimming PE, 277V, 20 Amp
9052953	WANS-480	ANSI B824-Dimming PE, 480V, 20 Amp
9302027	PE-347-LED-7	ANSI C834-Dimming PE, 347V, 7A
9302028	PE-347-LED-7	ANSI C834-Dimming PE, 347V, 7A
9302029	PE-480-LED-7	ANSI C834-Dimming PE, 480V, 7A

Back Light Shield

SHIELD ORIENTATION	CUTOFF DISTANCE	SHIELD ORDER LOGIC
Back	Long	ES-EACL-RE-BLCK

Page 4 of 10
© 2023 Current Lighting Solutions, LLC. All rights reserved. Information and specifications subject to change without notice. All other trademarks are the property of their respective owners. **QDPS02-Evolve-LED-Area-Lighting-EACL-Spec-Sheet_S05**

1 GE EVOLVE EACL SERIES AREA LUMINARIES

2 GE EVOLVE EACL SERIES LUMINARIES SHIELDING

EVOLVE
EACL Series Luminares
Shielding Specification & Ordering Guide

The next evolution of the Evolve® LED Area Light delivers even better precision control. Current's exclusive reflective optical ring design produces superior vertical illuminance and efficiently directs the light without wasteful and unwelcomed light spill into neighboring properties. Due to the extensive variation of parking lot configurations coupled with tightening ordinances.

Current now offers a full array of shielding to accommodate challenging sites.

The shielding options available for the Evolve® Area Light focus on the following applications:

- Left & Right Cutoff
- Front Cutoff
- Backlight Control & B-U-G Improvement

Within each of the shielding families, there are multiple shielding cutoff levels that are categorized in mounting height (MH) increments. Current accommodates cutoff distance from the pole from 1MH to 2.5 MH in 0.5 MH increments. The shields that are listed are for the most common applications. Please contact the manufacturer if your needs is not listed.

All shields can be installed easily in the field. The next evolution of the Evolve® LED Area Light and shielding options will help you meet any parking lot challenge.

Page 1 of 2
© 2023 Current Lighting Solutions, LLC. All rights reserved. Information and specifications subject to change without notice. All other trademarks are the property of their respective owners. **QDPS02-Evolve-EACL-Series-Area-Light-Shielding_S01**

EVOLVE
SSSE Series Poles
Square | Straight | Steel

Project Name _____
Date _____ Type _____
Notes _____

APPLICATIONS
Lighting installations for side and top mounting of luminaires with effective projected area (EPA) not exceeding maximum allowable loading of the specified pole in its installed geographic location.

CONSTRUCTION
Shaft: One-piece straight steel with square cross section, flat sides and minimum 0.23" radius on all corners. Minimum yield of 46,000 psi (ASTM A500, Grade B). Longitudinal weld seams to appear flush with shaft side wall. Steel base plate with axial bolt circle slots welded to pole shaft having minimum yield of 36,000 psi (ASTM A36).

Base Cover: Two-piece square aluminum base cover included standard.

Pole Cap: Pole cap supplied with removable cover when applicable. Tenon and post-top configurations also available.

Hand Hole: Rectangular 3/5" steel hand hole frame (2.38" x 4.38" opening). Mounting provisions for grounding lug located behind gasketed cover.

Anchor Bolts: Four galvanized anchor bolts provided per pole with minimum yield of 55,000 psi (ASTM F1554). Galvanized hardware with two washers and two nuts per bolt for leveling.

Anchor Bolt Part Numbers: 1 x 3/4 x 4 - TAB-38-M38 | 1 x 3/4 x 4 - TAB-36-M38

FINISH
Durable thermoplastic polyester powder coat paint finish with nominal 3.0 mil thickness.
Powder paint prime applied over "white metal" steel substrate cleaned via mechanical shot blast method.
Decorative finish coat available in multiple standard colors. Custom colors available. RAL number: preferable.

10 DAY - EVOLVE EXPRESS SHIP PROGRAM
Ships in 10 days
Limit of 15 poles

Page 1 of 5
© 2023 Current Lighting Solutions, LLC. All rights reserved. Information and specifications subject to change without notice. All other trademarks are the property of their respective owners. **QDPS02-Evolve-SSSE-Series-Area-Light-Shielding_S01**

3 GE EVOLVE EACL SERIES LUMINARIES SHIELDING

4 GE EVOLVE SSSE SERIES POLES

EVOLVE
SSSE Series Poles
Square | Straight | Steel
Ordering Information

Project Name _____
Date _____ Type _____
Notes _____

Example: SSSE25-40A-2-E2-DKKBZ-UL

SSSE	20	40	B	E2	GRAY
10-10 ft	40" Square	A-0.125"	B-0.125"	E2 - Evolve Square Pole	DRKZ - Dark Bronze
12-12 ft	40" Square	A-0.125"	B-0.125"	E2 - Evolve Square Pole	DRKZ - Dark Bronze
14-14 ft	40" Square	A-0.125"	B-0.125"	E2 - Evolve Square Pole	DRKZ - Dark Bronze
16-16 ft	40" Square	A-0.125"	B-0.125"	E2 - Evolve Square Pole	DRKZ - Dark Bronze
18-18 ft	40" Square	A-0.125"	B-0.125"	E2 - Evolve Square Pole	DRKZ - Dark Bronze
20-20 ft	40" Square	A-0.125"	B-0.125"	E2 - Evolve Square Pole	DRKZ - Dark Bronze
25-25 ft	40" Square	A-0.125"	B-0.125"	E2 - Evolve Square Pole	DRKZ - Dark Bronze

POLE DRILLING
E2 - Evolve Square Pole
UL - UL Certified

ACCESSORIES - ORDER SEPARATELY

CATALOG NUMBER	DESCRIPTION
VM1*	1st mode vibration damper
VM2**	2nd mode vibration damper

Page 2 of 5
© 2023 Current Lighting Solutions, LLC. All rights reserved. Information and specifications subject to change without notice. All other trademarks are the property of their respective owners. **QDPS02-Evolve-SSSE-Series-Area-Light-Shielding_S01**

4 GE EVOLVE SSSE SERIES POLES

EVOLVE
SSSE Series Poles
Square | Straight | Steel
Ordering Information

Project Name _____
Date _____ Type _____
Notes _____

CATALOG NUMBER	HEIGHT FEET	HEIGHT METERS	NOMINAL SHAFT DIMENSIONS	WALL THICKNESS	BOLT CIRCLE (SUGGESTED)	BOLT CIRCLE (RANGE)	BOLT SQUARE (RANGE)	ANCHOR BOLT SIZE	BOLT PROJECTION	W/POLE WEIGHT
SSS10-40A	10	3.05	4" square	0.125"	9"	8"-10"	5.66"-7.07"	9"	3/4"x30"x3"	3.5
SSS12-40A	12	3.7	4" square	0.125"	9"	8"-10"	5.66"-7.07"	9"	3/4"x30"x3"	3.5
SSS14-40A	14	4.3	4" square	0.125"	9"	8"-10"	5.66"-7.07"	9"	3/4"x30"x3"	3.5
SSS16-40A	16	4.9	4" square	0.125"	9"	8"-10"	5.66"-7.07"	9"	3/4"x30"x3"	3.5
SSS18-40A	18	5.5	4" square	0.125"	9"	8"-10"	5.66"-7.07"	9"	3/4"x30"x3"	3.5
SSS20-40A	20	6.1	4" square	0.125"	9"	8"-10"	5.66"-7.07"	9"	3/4"x30"x3"	3.5
SSS25-40A	25	7.6	4" square	0.125"	9"	8"-10"	5.66"-7.07"	9"	3/4"x30"x3"	3.5

SHIELDING OPTIONS
E2H - EXTRA HANDHOLE
COS - COUPLING
VM1 - VIBRATION DAMPER 1ST MODE
VM2 - VIBRATION DAMPER 2ND MODE
VM2SX - VIBRATION DAMPER 2ND MODE

Page 3 of 5
© 2023 Current Lighting Solutions, LLC. All rights reserved. Information and specifications subject to change without notice. All other trademarks are the property of their respective owners. **QDPS02-Evolve-SSSE-Series-Area-Light-Shielding_S01**

4 GE EVOLVE SSSE SERIES POLES

INSITE
LANDSCAPE DESIGN

Landscape Consulting & Master Planning Design Services

11525 W. North Avenue, Suite 1B
Wauwatosa, WI 53226
Tel (414) 476-1204
www.insitedesigninc.com
mdavis@insitedesigninc.com

Project:

ENTERPRISE MOBILITY

1060 Lincoln Avenue
Waukesha, WI 53186

Issuance and Revisions:

Date	Number	Description
07/29/24		Plan Commission Submittal

ALL RIGHTS RESERVED

THIS DRAWING IS NOT TO BE REPRODUCED, CHANGED, COPIED OR ASSIGNED TO ANY THIRD PARTY IN ANY FORM OR MANNER WITHOUT FIRST OBTAINING THE EXPRESSED WRITTEN PERMISSION OF InSite Landscape Design, Inc. THE CLIENT AGREES TO INDEMNIFY AND HOLD THE InSite Landscape Design, Inc. HARMLESS FROM ANY DAMAGES, LIABILITY OR COST, INCLUDING ATTORNEY'S FEES AND COSTS OF DEFENSE ARISING FROM ANY CHANGES OR ALTERATIONS MADE BY ANYONE OTHER THAN THE InSite Landscape Design, Inc. OR FROM ANY REUSE OF THE DRAWINGS OR DATA WITHOUT THE PRIOR WRITTEN CONSENT OF THE InSite Landscape Design, Inc.

Sheet Title:

PROPOSED LIGHT FIXTURES

Date of Drawing: 07/29/24
Scale: NONE
Drawn By: MCD
Job Number: L24-054
Sheet Number:

PHO 1.2

811 Know what's below. Call 811 before you dig.

NOT FOR CONSTRUCTION - PRELIMINARY - FOR ESTIMATING AND REVIEW ONLY - DO NOT SCALE - THESE DRAWINGS - These progress documents reflect progress & intent & may be subject to change, including additional notes and detail. These are not final construction documents and should not be used for final bidding or construction-related purposes.

TO OBTAIN LOCATION OF PARTICIPANTS UNDERGROUND FACILITIES BEFORE YOU DIG IN WISCONSIN

DIGGERS HOTLINE

WISCONSIN STATUTE 182.0175 (1974) REQUIRES A MINIMUM OF 3 DAYS NOTICE BEFORE YOU EXCAVATE (NOT INCLUDING SATURDAY, SUNDAY OR LEGAL HOLIDAYS)

UNDERGROUND SEWER AND UTILITY INFORMATION AS SHOWN IS OBTAINED FROM THE RECORDS OF MUNICIPALITY AND LOCAL UTILITY COMPANIES. THE ACCURACY OF WHICH CAN NOT BE GUARANTEED OR CERTIFIED TO. THE LOCATIONS OF EXISTING UTILITY INSTALLATIONS AS SHOWN ON THIS SURVEY ARE APPROXIMATE. THERE MAY BE OTHER UNDERGROUND UTILITY INSTALLATIONS WITHIN THE PROJECT AREA THAT ARE NOT SHOWN.

TO OBTAIN LOCATION OF PARTICIPANTS UNDERGROUND FACILITIES BEFORE YOU DIG IN WISCONSIN CALL THE MILWAUKEE UTILITY ALERT NETWORK
www.DiggersHotline.com
(800) 242-8511 OR