

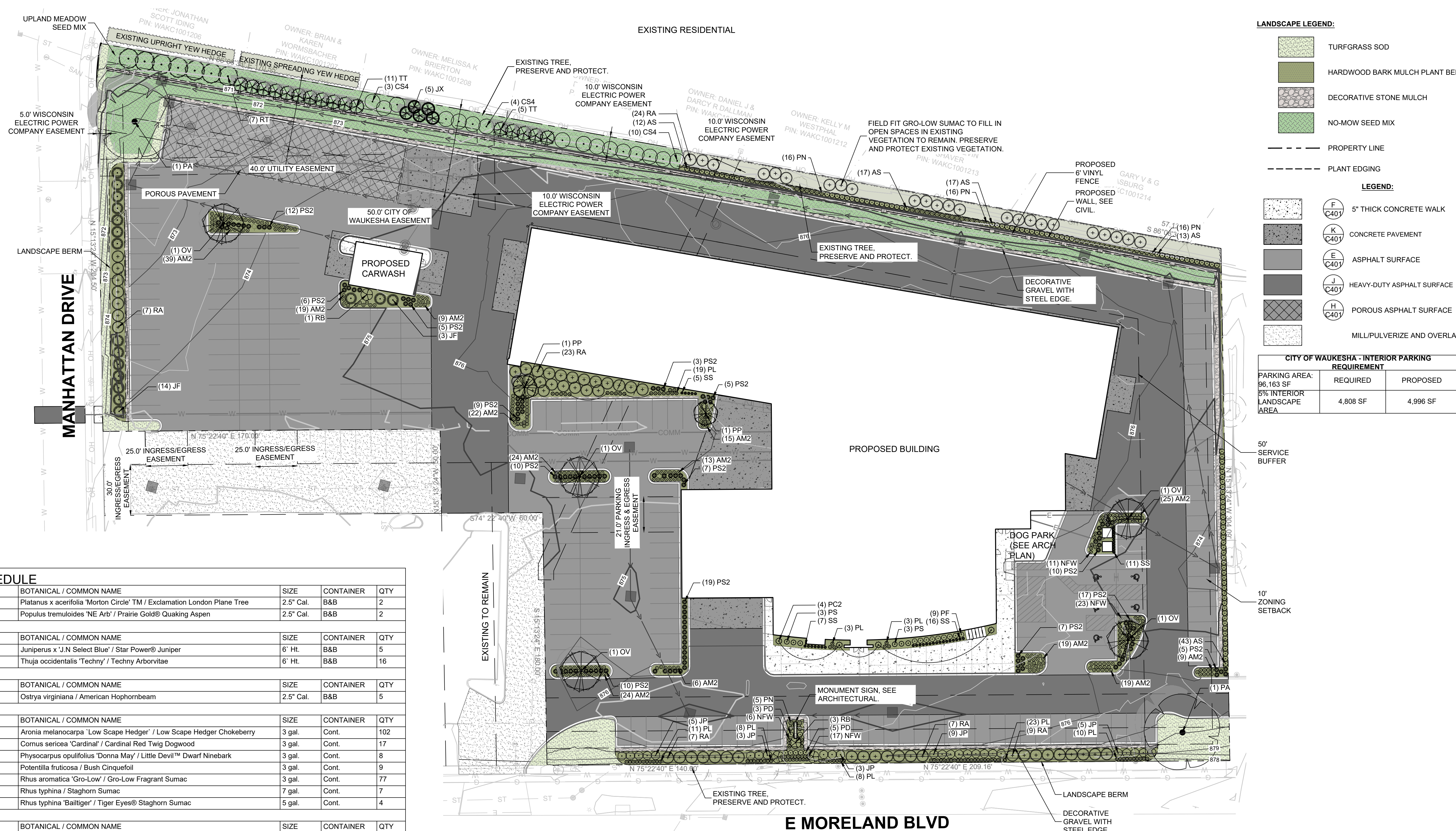
WILDE SUBARU
E MORELAND BLVD & MANHATTAN DR
WAUKESHA, WI
OVERALL LANDSCAPE PLAN

PRELIMINARY
NOT FOR
CONSTRUCTION

ISSUANCE	DATE
90% PLANS	09/11/23
----	----
----	----

NO. REVISION	DATE
----	----
----	----
----	----

PROJECT NO:	21736
DESIGN DATE:	----
PLOT DATE:	2023.10.25
DRAWN BY:	----
CHECKED BY:	----
APPROVED BY:	----
SHEET NO:	L100



LANDSCAPE LEGEND:

- TURFGRASS SOD
- HARDWOOD BARK MULCH PLANT BED
- DECORATIVE STONE MULCH
- NO-MOW SEED MIX
- PROPERTY LINE
- PLANT EDGING

LEGEND:

- (F C401) 5" THICK CONCRETE WALK
- (K C401) CONCRETE PAVEMENT
- (E C401) ASPHALT SURFACE
- (J C401) HEAVY-DUTY ASPHALT SURFACE
- (H C401) POROUS ASPHALT SURFACE
- MILL/PULVERIZE AND OVERLAY

CITY OF WAUKESHA - INTERIOR PARKING REQUIREMENT

PARKING AREA:	REQUIRED	PROPOSED
96,163 SF		
5% INTERIOR LANDSCAPE AREA	4,808 SF	4,996 SF

PLANT SCHEDULE

DECIDUOUS TREES	BOTANICAL / COMMON NAME	SIZE	CONTAINER	QTY
PA	Platanus x acerifolia 'Morton Circle' TM / Exclamation London Plane Tree	2.5" Cal.	B&B	2
PP	Populus tremuloides 'NE Arb' / Prairie Gold® Quaking Aspen	2.5" Cal.	B&B	2
EVERGREEN TREES	BOTANICAL / COMMON NAME	SIZE	CONTAINER	QTY
JX	Juniperus x 'J.N Select Blue' / Star Power® Juniper	6' Ht.	B&B	5
TT	Thuja occidentalis 'Techny' / Techny Arborvitae	6' Ht.	B&B	16
ORNAMENTAL TREES	BOTANICAL / COMMON NAME	SIZE	CONTAINER	QTY
OV	Ostrya virginiana / American Hophornbeam	2.5" Cal.	B&B	5
DECIDUOUS SHRUBS	BOTANICAL / COMMON NAME	SIZE	CONTAINER	QTY
AS	Aronia melanocarpa 'Low Scape Hedger' / Low Scape Hedger Chokeberry	3 gal.	Cont.	102
CS4	Cornus sericea 'Cardinal' / Cardinal Red Twig Dogwood	3 gal.	Cont.	17
PD	Physocarpus opulifolius 'Donna May' / Little Devil™ Dwarf Ninebark	3 gal.	Cont.	8
PF	Potentilla fruticosa / Bush Cinquefoil	3 gal.	Cont.	9
RA	Rhus aromatica 'Gro-Low' / Gro-Low Fragrant Sumac	3 gal.	Cont.	77
RT	Rhus typhina / Staghorn Sumac	7 gal.	Cont.	7
RB	Rhus typhina 'Bailtiger' / Tiger Eyes® Staghorn Sumac	5 gal.	Cont.	4
EVERGREEN SHRUBS	BOTANICAL / COMMON NAME	SIZE	CONTAINER	QTY
JP	Juniperus chinensis 'Kallays Compact' / Kallay Compact Pfitzer Juniper	5 gal.	Cont.	25
JF	Juniperus chinensis 'Sea Green' / Sea Green Juniper	5 gal.	Cont.	17
PC2	Picea glauca 'Conica' / Dwarf White Spruce	5 gal.	Cont.	4
PS	Pinus mugo 'Slowmound' / Slowmound Mugo Pine	3 gal.	Cont.	6
ORNAMENTAL GRASSES	BOTANICAL / COMMON NAME	SIZE	CONTAINER	QTY
PN	Panicum virgatum 'Northwind' / Northwind Switch Grass	1 gal.	Cont.	53
PS2	Panicum virgatum 'Shenandoah' / Shenandoah Switch Grass	1 gal.	Cont.	124
SS	Schizachyrium scoparium 'Standing Ovation' / Standing Ovation Little Bluestem	1 gal.	Cont.	39
PERENNIALS	BOTANICAL / COMMON NAME	SIZE	CONTAINER	QTY
AM2	Achillea x 'Moonshine' / Moonshine Yarrow	1 gal.	Cont.	234
NFW	Nepeta x faassenii 'Walker's Low' / Walker's Low Catmint	1 gal.	Cont.	57
PL	Perovskia atriplicifolia 'Little Spire' / Little Spire Russian Sage	1 gal.	Cont.	85

- LANDSCAPE GENERAL NOTES:**
- VERIFY EXISTING AND PROPOSED CONDITIONS, UTILITIES, PIPES, AND STRUCTURES, ETC. PRIOR TO BIDDING AND CONSTRUCTION.
 - INSPECT THE SITE PRIOR TO COMMENCING WORK. DOCUMENT IN WRITING AND PHOTOGRAPH EXISTING CONDITIONS WITHIN, AND IN AREAS ADJACENT TO THE LIMITS OF CONSTRUCTION. THE LANDSCAPE CONTRACTOR IS RESPONSIBLE FOR ANY DAMAGES NOT DOCUMENTED IN THE PHOTOGRAPHS PRIOR TO COMMENCEMENT OF DEMOLITION ACTIVITIES.
 - COORDINATE THE INSTALLATION OF PLANT MATERIAL WITH INSTALLATION OF ADJACENT PAVEMENTS, DRAINAGE, CURB RELATED STRUCTURES WITH OTHER TRADES.
 - RESTORE AREAS OF THE SITE, OR ADJACENT AREAS, WHERE DISTURBED. DAMAGE CAUSED DURING LANDSCAPE INSTALLATION TO EXISTING CONDITIONS AND IMPROVEMENTS IS THE RESPONSIBILITY OF THE LANDSCAPE CONTRACTOR.
 - CONTRACTOR SHALL THOROUGHLY REVIEW ALL SPECIFICATIONS RELATED TO TREE PROTECTION, SOIL PREPARATION, TURF, GRASSES AND PLANTS. THESE SECTIONS PROVIDE ADDITIONAL INFORMATION ON MATERIALS AND SET STANDARDS FOR QUALITY AND INSTALLATION REQUIREMENTS.
 - PROVIDE 3" DOUBLE SHREDDED BARK MULCH FOR ALL PLANTED TREES, SHRUBS AND LANDSCAPE BEDS.



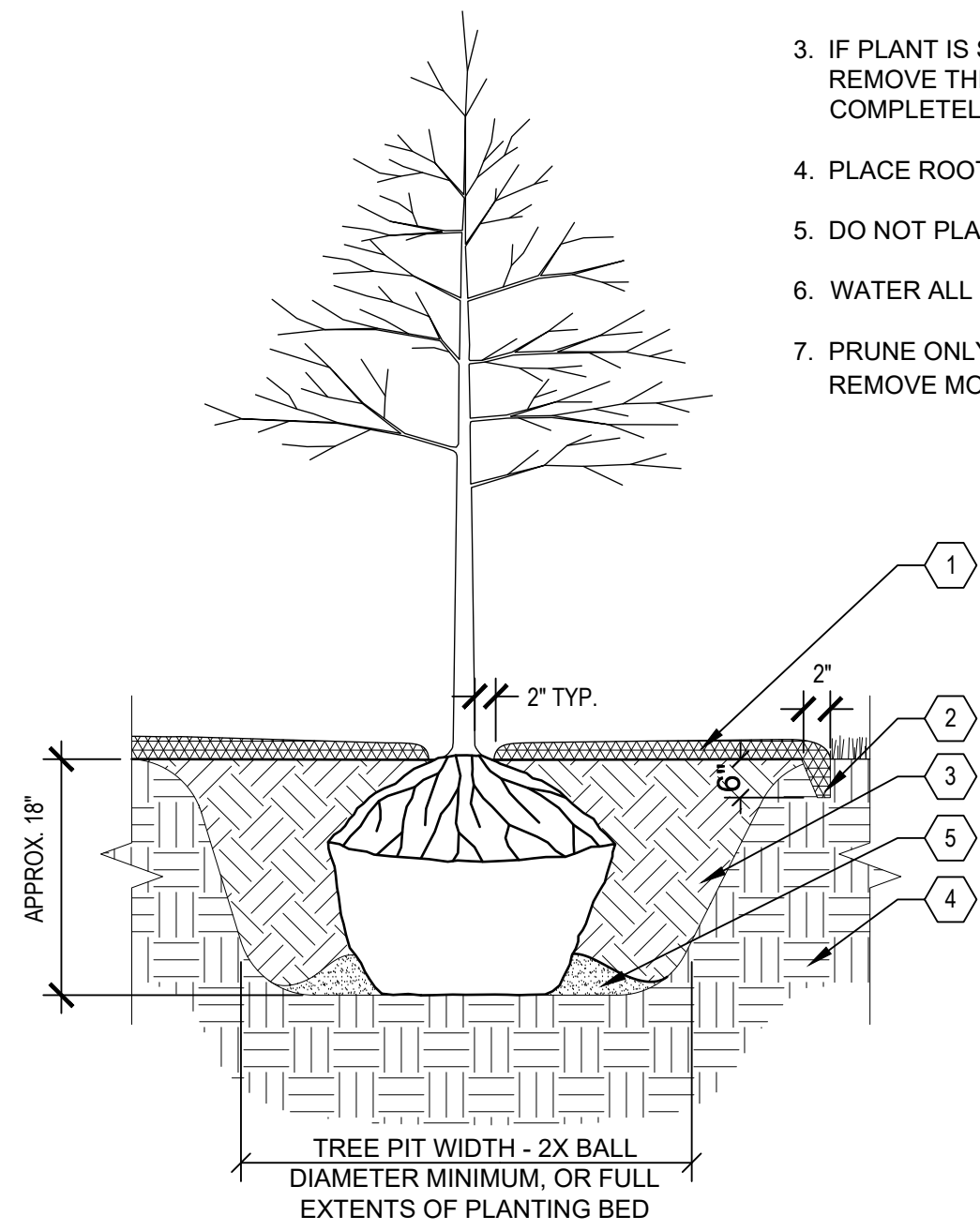
CALL DIGGERS HOTLINE
 1-800-242-8511
 TOLL FREE

WE STRONGLY RECOMMEND
 REQUIRE 3 WORK DAYS
 NOTICE BEFORE YOU EXCAVATE
 MILW. AREA 259-1181

THE UNDERGROUND UTILITY INFORMATION SHOWN ON THIS MAP IS BASED ON FIELD MARKINGS AND INFORMATION FURNISHED BY UTILITY COMPANIES AND THE LOCAL MUNICIPALITY. WHILE THIS INFORMATION IS BELIEVED TO BE RELIABLE, ITS ACCURACY AND COMPLETENESS CANNOT BE GUARANTEED.

NOTES:

1. PLANT EACH TREE SUCH THAT THE ROOT FLARE IS VISIBLE AT THE TOP OF THE ROOT BALL. DO NOT COVER THE TOP OF THE ROOT BALL WITH SOIL.
2. DEPTH OF THE PLANTING HOLE SHOULD BE DETERMINED AND DUG AFTER THE ROOT FLARE IS LOCATED. PLANTING HOLE MUST BE NO DEEPER THAN THE HEIGHT OF THE ROOT BALL.
3. IF PLANT IS SHIPPED WITH A WIRE BASKET AROUND THE ROOT BALL, CUT AND REMOVE THE WIRE BASKET ENTIRELY. REMOVE ALL TWINE, ROPE, AND BURLAP COMPLETELY FROM ALL ROOT BALLS.
4. PLACE ROOT BALL ON UNEXCAVATED OR TAMPED SOIL.
5. DO NOT PLACE MULCH IN CONTACT WITH STEMS.
6. WATER ALL PLANTS WITHIN 2 HOURS OF INSTALLATION.
7. PRUNE ONLY AS NECESSARY TO REMOVE UNHEALTHY BRANCHES. DO NOT REMOVE MORE THAN 1/3 OF THE ORIGINAL PLANT MASS.

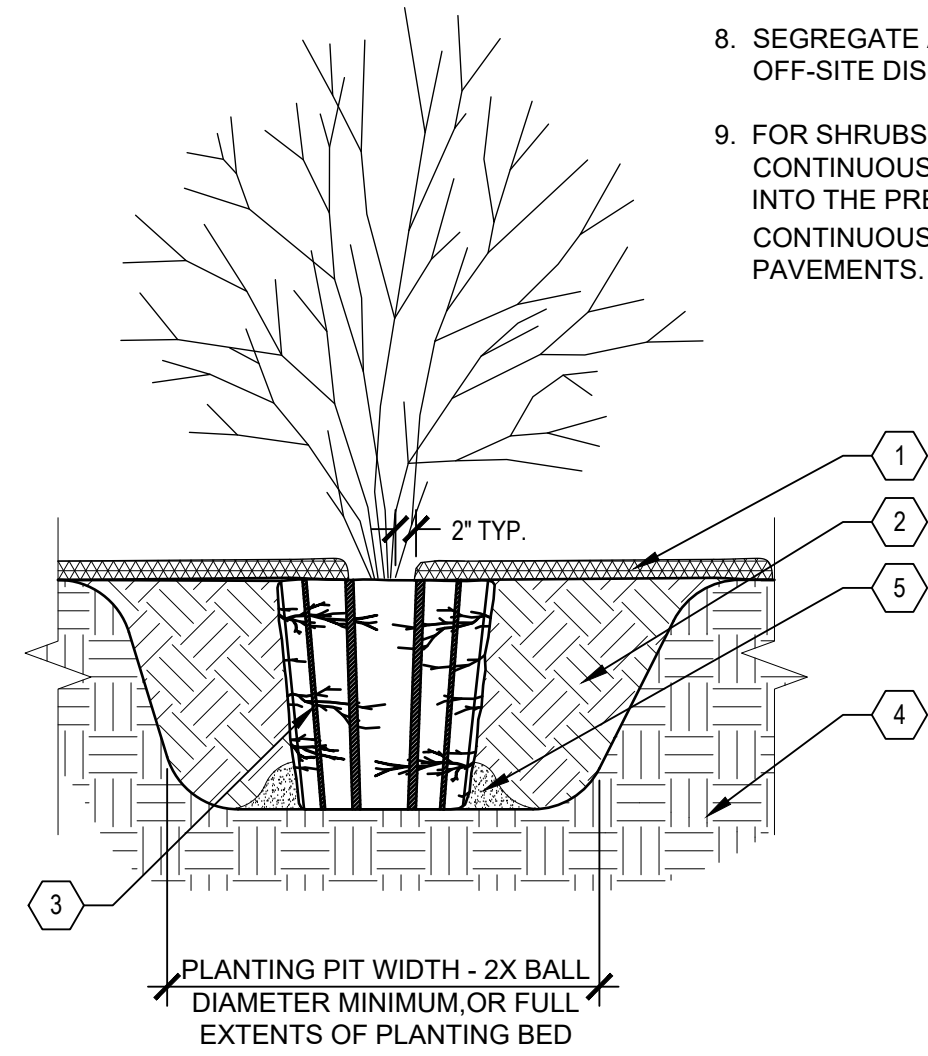


- 1 3" DEPTH SHREDDED HARDWOOD BARK MULCH. PROVIDE 4'-0" DIAMETER MULCH RINGS AT THE BASE OF ANY TREES PLANTED IN LAWN.
- 2 PROVIDE SPADED EDGE, 2" WIDE, 6" DEEP FOR ENTIRE PERIMETER OF BARK MULCH RINGS AT BASE OF TREES PLANTED IN LAWNS
- 3 PLANTING SOIL. PLANTING SOIL SHALL BE PLACED IN ONE CONTINUOUS VOLUME FOR THE ENTIRE AREA OF ANY GIVEN PLANT BED.
- 4 PREPARED SUBGRADE
- 5 TAMP SOIL AROUND BALL BASE FIRMLY WITH FOOT PRESSURE SO THAT BALL DOES NOT SHIFT

A TYPICAL TREE PLANTING
SCALE: NTS

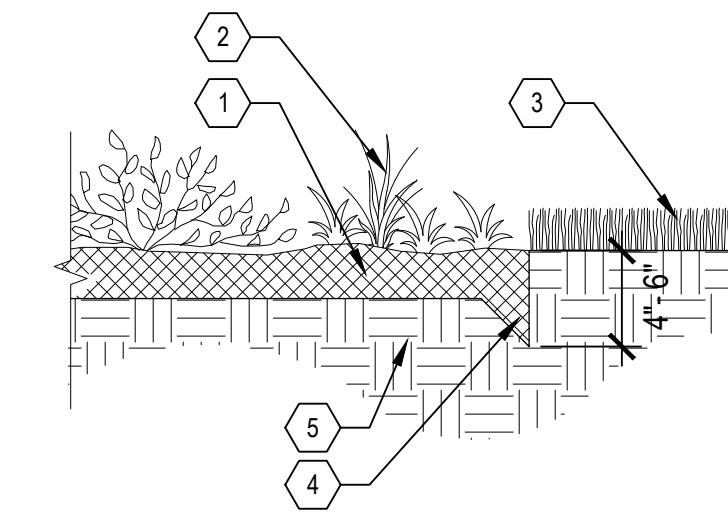
NOTES:

1. MAKE 1" TO 2" DEEP VERTICAL CUTS EVERY 6" AROUND THE CIRCUMFERENCE OF THE ROOT BALL BEFORE PLANTING TO LOOSEN POT-BOUND ROOTS.
2. PLANT EACH SHRUB SUCH THAT THE ROOT FLARE IS VISIBLE AT THE TOP OF THE ROOT BALL. DO NOT COVER THE TOP OF THE ROOT BALL WITH SOIL.
3. PLANTING HOLE MUST NOT BE DEEPER THAN THE HEIGHT OF THE ROOT BALL.
4. DO NOT PLACE MULCH IN CONTACT WITH STEMS.
5. PLACE ROOT BALL ON UNEXCAVATED OR TAMPED SOIL.
6. WATER ALL PLANTS WITHIN 2 HOURS OF INSTALLATION.
7. PRUNE ONLY AS NECESSARY TO REMOVE UNHEALTHY BRANCHES. DO NOT REMOVE MORE THAN 1/3 OF THE ORIGINAL PLANT MASS.
8. SEGREGATE ANY SOIL FROM BELOW WARNING LAYER EXCAVATED DURING PLANTING FOR OFF-SITE DISPOSAL. COORDINATE DISPOSAL WITH ENVIRONMENTAL CONSULTANT.
9. FOR SHRUBS PLANTED WITHIN PLANTING BEDS, CONTRACTOR SHALL PROVIDE PLANTING SOIL CONTINUOUSLY FOR THE ENTIRE PLANTING BED AND INDIVIDUAL SHRUBS SHALL BE PLANTED INTO THE PREPARED PLANTING SOIL. MULCH SURFACE FOR PLANTING BEDS SHALL ALSO BE CONTINUOUS ACROSS THE ENTIRE SURFACE AND HELD 1/2" MIN. TO 1" MAX. BELOW ADJACENT PAVEMENTS.



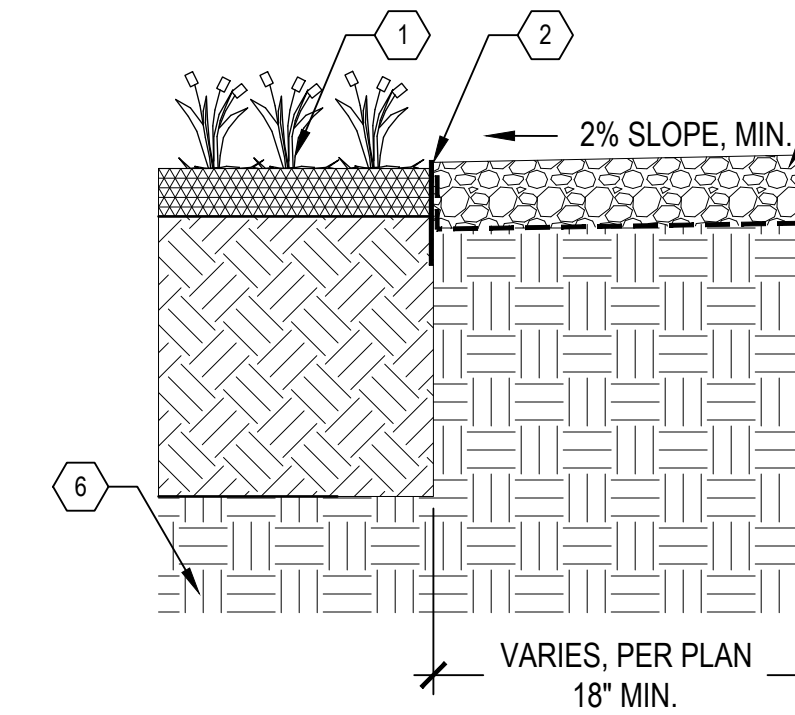
- 1 3" DEPTH TWICE-SHREDDED HARDWOOD BARK MULCH, UNLESS OTHERWISE INDICATED, KEEP 2" CLEAR OF STEMS
- 2 PLANTING SOIL AS SPECIFIED, PLANTING SOIL SHALL BE PLACED IN ONE CONTINUOUS VOLUME FOR THE ENTIRE AREA OF ANY GIVEN PLANT BED
- 3 1" TO 2" DEEP VERTICAL CUTS EVERY 6" AROUND PERIMETER
- 4 PREPARED SUBGRADE
- 5 TAMP SOIL AROUND BALL BASE FIRMLY WITH FOOT PRESSURE SO THAT BALL DOES NOT SHIFT

B TYPICAL SHRUB PLANTING
SCALE: NTS



- 1 3" DEPTH OF MULCH LAYER
- 2 SHRUB PLANTING BED
- 3 LAWN ADJACENT TO PLANTING BED
- 4 45 DEGREE ANGLE SHOVEL CUT EDGE TOWARD PLANTING BED
- 5 COMPACTED SUBGRADE

C SHOVEL CUT PLANT EDGE
SCALE: NTS



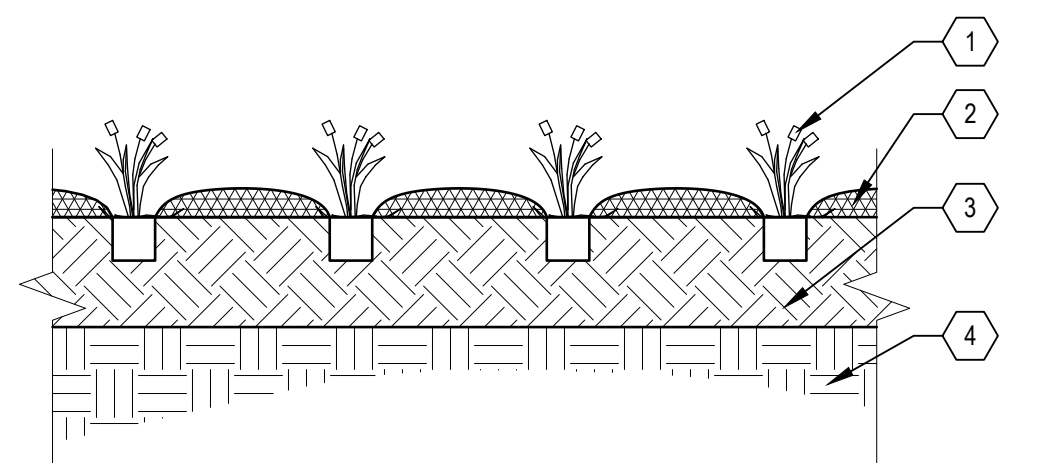
KEYED LEGEND

- 1 ADJACENT PLANTING BED
- 2 BLACK ANODIZED ALUMINUM EDGING
- 3 ADJACENT CURB
- 4 3" DEPTH STONE MULCH
- 5 WOVEN GEOTEXTILE FILTER FABRIC, WRAP UP SIDES OF BUILDING AND EDGING
- 6 PREPARED SUBGRADE

D STONE MAINTENANCE EDGE
SCALE: NTS

NOTES:

1. DO NOT COVER THE TOP OF THE ROOT BALL WITH SOIL.
2. PLANTING HOLE MUST NOT BE DEEPER THAN THE HEIGHT OF THE ROOT BALL.
3. DO NOT PLACE MULCH IN CONTACT WITH STEMS.
4. WATER ALL PLANTS THOROUGHLY WITHIN 2 HOURS OF INSTALLATION.
5. PRUNE ONLY AS NECESSARY TO REMOVE UNHEALTHY OR DEAD PLANT PARTS. DO NOT REMOVE MORE THAN 1/3 OF THE ORIGINAL PLANT MASS.
6. FOR PLANTS PLANTED WITHIN PLANTING BEDS, CONTRACTOR SHALL PROVIDE PLANTING SOIL CONTINUOUSLY FOR THE ENTIRE PLANTING BED AND INDIVIDUAL SHRUBS SHALL BE PLANTED INTO THE PREPARED PLANTING SOIL. MULCH SURFACE FOR PLANTING BEDS SHALL ALSO BE CONTINUOUS ACROSS THE ENTIRE SURFACE AND HELD 1/2" MIN. TO 1" MAX. BELOW ADJACENT PAVEMENTS.



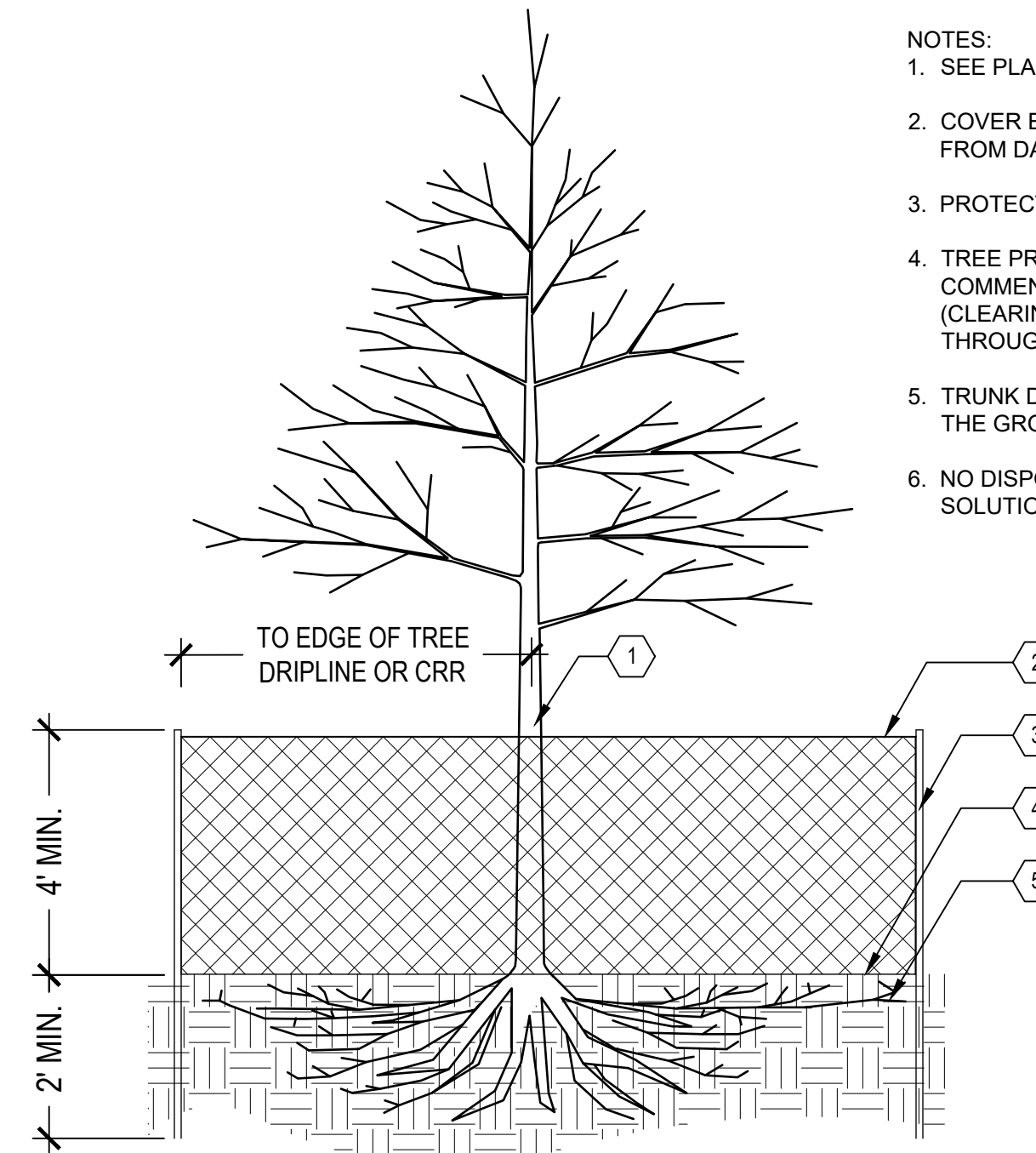
KEYED LEGEND

- 1 PERENNIAL, ORNAMENTAL GRASS, OR GROUNDCOVER PLUG, SEE LANDSCAPE PLAN SHEETS L100-L103
- 2 3" DEPTH TWICE-SHREDDED HARDWOOD BARK MULCH, UNLESS OTHERWISE INDICATED, KEEP 3" CLEAR OF STEMS
- 3 PLANTING SOIL. PLANTING SOIL SHALL BE PLACED IN ONE CONTINUOUS VOLUME FOR THE ENTIRE AREA OF ANY GIVEN PLANT BED
- 4 PREPARED SUBGRADE

E TYPICAL PERENNIAL & ORNAMENTAL GRASS PLANTING
SCALE: NTS

NOTES:

1. SEE PLAN FOR TREE PROTECTION LOCATIONS & ADDITIONAL NOTES.
2. COVER EXPOSED ROOTS W/ COMPOST & WOOD MULCH TO PROTECT FROM DAMAGE DURING CONSTRUCTION.
3. PROTECT TREE CANOPIES FROM OVERHEAD DAMAGE.
4. TREE PROTECTION FENCE SHALL BE INSTALLED PRIOR TO COMMENCEMENT OF ANY SITE DEMOLITION OR PREPARATION WORK (CLEARING, GRUBBING, OR GRADING) AND SHALL BE MAINTAINED THROUGHOUT ALL PHASES OF THE CONSTRUCTION PROJECT.
5. TRUNK DIAMETER AT BREAST HEIGHT (DBH) MEASURED 4.5' ABOVE THE GROUND.
6. NO DISPOSAL OF CONSTRUCTION MATERIALS, BYPRODUCTS, OR SOLUTIONS PERMITTED WITHIN TREE PROTECTION ZONES.

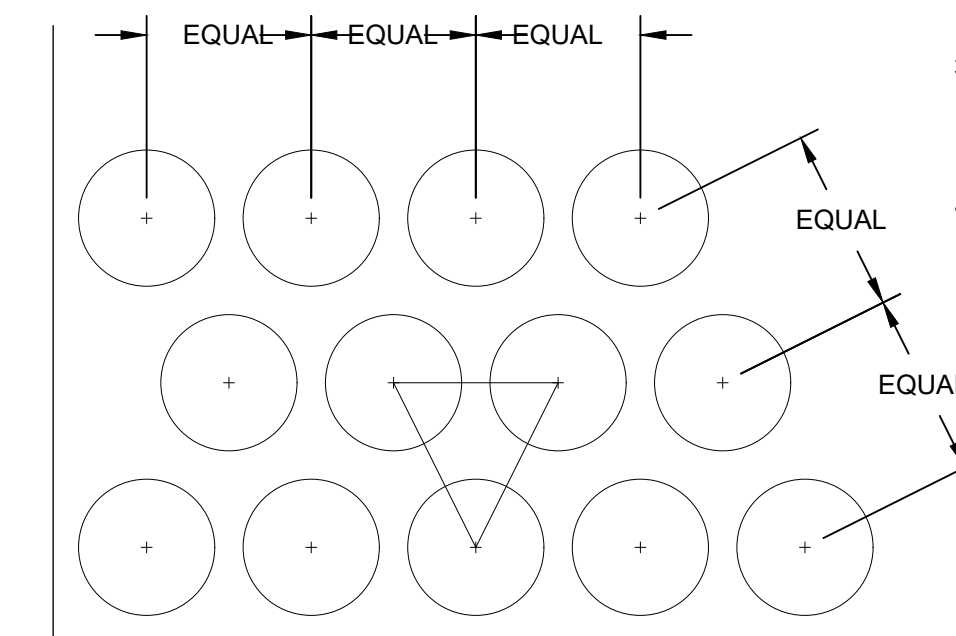


KEYED LEGEND

- 1 EXISTING TREE
- 2 TREE PROTECTION FENCE, 4' HT. ORANGE SNOW FENCE
- 3 6" TALL STUDDED METAL T-POSTS, TYP.
- 4 FINISH GRADE, CONDITION VARIES, SEE PLAN FOR REQUIRED RESTORATION
- 5 UNDISTURBED TREE ROOTS AND SOIL

F TREE PROTECTION FENCE
SCALE: NTS

*CRR = CRITICAL ROOT RADIUS IS DEFINED AS TREE DIAMETER (4.5' FROM GROUND) X 1.5 = CRR VALUE EXPRESSED IN FEET.



NOTES:

1. SET FINISH GRADE OF PLANTING AREA 2" BELOW FINISH SURFACE OF PAVING, CURB, OR HEADER
2. SEE PLANTING SCHEDULE FOR SPACING OF ALL SHRUBS AND GROUNDCOVERS
3. ALL SHRUBS / GROUNDCOVER TO BE PLANTED AT EQUAL SPACING (TRIANGULAR) UNLESS OTHERWISE INDICATED ON PLANS.
4. TO DETERMINE APPROPRIATE PLANT QUANTITIES REFER TO THE PLANTING SCHEDULE OR PLAN.

- 1 EDGE OF ADJACENT PAVEMENT
- 2 SHRUB, PERENNIAL OR ORNAMENTAL GRASS PLANT CENTER LOCATION

G TYPICAL PLANT SPACING
SCALE: NTS

WILDE SUBARU
 E MORELAND BLVD & MANHATTAN DR
 WAUKESHA, WI
 LANDSCAPE DETAILS

PRELIMINARY
 NOT FOR
 CONSTRUCTION

ISSUANCE	DATE
90% PLANS	09/11/23
---	---
---	---

NO. REVISION	DATE
---	---
---	---
---	---

PROJECT NO:	21736
DESIGN DATE:	---
PLOT DATE:	2023.10.25
DRAWN BY:	---
CHECKED BY:	---
APPROVED BY:	---

SHEET NO:

L200

PLANTING QUALITY ASSURANCE

- PLANTS ARE TO BE INSPECTED UPON DELIVERY TO PROJECT SITE AND THE LANDSCAPE ARCHITECT OR OWNER'S PROJECT REPRESENTATIVE MAY REJECT ANY SPECIMENS NO LONGER MEETING THE SPECIFIED STANDARDS OR THAT HAVE BEEN DAMAGED IN TRANSIT.
- ALL PLANT MATERIAL SHALL BE TRUE TO SPECIES AND VARIETY/HYBRID/CULTIVAR SPECIFIED, AND NURSERY GROWN IN ACCORDANCE WITH GOOD HORTICULTURAL PRACTICES, AND UNDER CLIMATIC CONDITIONS SIMILAR TO THOSE OF THE SITE LOCATION. SPECIMENS NURSERY-DUG TO BE REPLANTED SHALL HAVE BEEN FRESHLY DUG AND PROPERLY PREPARED FOR PLANTING.
- TREES:
 - SHALL BE TRAINED IN DEVELOPMENT AND APPEARANCE AS TO BE SUPERIOR IN FORM, COMPACTNESS AND SYMMETRY. TREES WITH MULTIPLE LEADERS, UNLESS SPECIFIED OTHERWISE, AND SHRUBS WITH DAMAGED OR CUT MAINSTEM(S), WILL BE REJECTED.
 - WITH A DAMAGED, CUT OR CROOKED LEADER, ABRASION OF BARK, SUNSCALD, FROST CRACK, DISFIGURING KNOTS, INSECTS (INCLUDING EGGS AND LARVAE) OR INSECT DAMAGE, CANKERS/CANKEROUS LESIONS OR FUNGAL MATS, MOLD, PREMATURELY-OPENED BUDS, OR CUTS OF LIMBS OVER 1/4" DIAMETER THAT ARE NOT COMPLETELY CALLOSED WILL BE REJECTED.
 - SHALL HAVE HEALTHY, WELL-DEVELOPED ROOT SYSTEMS, AND BE FREE FROM PHYSICAL DAMAGE OR OTHER HINDRANCES TO HEALTHY GROWTH.
 - BALLED AND BURLAPPED PLANTS SHALL BE DUG WITH SOLID BALLS OF A DIAMETER NOT LESS THAN THAT RECOMMENDED BY THE AMERICAN STANDARDS FOR NURSERY STOCK, AND OF SUFFICIENT DEPTH TO INCLUDE BOTH FIBROUS AND FEEDING ROOTS. BALLS SHALL BE SECURELY WRAPPED WITH BURLAP, AND TIGHTLY BOUND WITH ROPE OR TWINE. NO PLANTS SHALL BE BOUND WITH ROPE OR WIRE IN SUCH A MANNER AS TO DAMAGE BARK OR BREAK BRANCHES. THE ROOT FLARE SHOULD BE WITHIN THE TOP 2" OF THE SOIL BALL. BALLED AND BURLAPPED PLANTS WILL NOT BE ACCEPTED IF THE BALL IS DRY, CRACKED, OR BROKEN BEFORE OR DURING PLANTING.
- PLANTS SHALL CONFORM TO THE MEASUREMENTS SPECIFIED WITHIN THE PLANT SCHEDULE.

PLANTING PROJECT CONDITIONS:

- VERIFY SERVICE AND UTILITY LOCATIONS, AND DIMENSIONS OF CONSTRUCTION CONTIGUOUS WITH NEW PLANTINGS BY FIELD MEASUREMENTS BEFORE PROCEEDING WITH PLANTING WORK.
- INTERRUPTION OF EXISTING SERVICES OR UTILITIES; DO NOT INTERRUPT SERVICES OR UTILITIES UNLESS PERMITTED UNDER THE FOLLOWING CONDITIONS AND THEN ONLY AFTER ARRANGING TO PROVIDE TEMPORARY SERVICES OR UTILITIES ACCORDING TO REQUIREMENTS INDICATED:
 - NOTIFY OWNER'S PROJECT REPRESENTATIVE NO FEWER THAN TWO DAYS IN ADVANCE OF PROPOSED INTERRUPTION OF EACH SERVICE OR UTILITY.
 - DO NOT PROCEED WITH INTERRUPTION OF SERVICES OR UTILITIES WITHOUT REPRESENTATIVE'S WRITTEN PERMISSION.
- PLANTING RESTRICTIONS: PLANTING SHALL OCCUR DURING THE FOLLOWING ACCEPTABLE INSTALLATION PERIODS:
 - DECIDUOUS TREES AND SHRUBS - APRIL 15 TO OCTOBER 15.
 - NATIVE SEEDING AND TURFGRASS: APRIL 15 - OCTOBER 15
- WEATHER LIMITATIONS: PROCEED WITH PLANTING ONLY WHEN EXISTING AND FORECASTED WEATHER CONDITIONS PERMIT PLANTING TO BE PERFORMED WHEN BENEFICIAL AND OPTIMUM RESULTS MAY BE OBTAINED. APPLY PRODUCTS DURING FAVORABLE WEATHER CONDITIONS ACCORDING TO MANUFACTURER'S WRITTEN INSTRUCTIONS AND WARRANTY REQUIREMENTS.
- CONTRACTOR SHALL PROTECT ALL EXISTING AND/OR NEWLY INSTALLED PLANTS, LAWNS, AND GRASS AREAS FROM DAMAGE AT ALL TIMES. DAMAGED PLANTS, LAWNS OR GRASS AREAS SHALL BE REPLACED OR TREATED AS REQUIRED TO CONFORM TO SPECIFICATIONS HEREIN FOR FRESH STOCK. WORK AREA SHALL BE KEPT CLEAN AND ORDERLY DURING THE INSTALLATION PERIOD. UNDER NO CONDITION SHALL DEBRIS FROM PLANTING ACTIVITIES RESULT IN A SAFETY HAZARD ON-SITE OR ADJACENT OFF-SITE PROPERTY. DAMAGE TO SITE IMPROVEMENTS OR ADJACENT LANDSCAPES INCURRED AS A RESULT OF PLANTING OR REPLACEMENT OPERATIONS SHALL BE REPAIRED BY THE CONTRACTOR THAT CAUSES THE DAMAGE AT NO COST TO THE OWNER.
- EXAMINE AREAS TO RECEIVE PLANTS FOR COMPLIANCE WITH REQUIREMENTS AND CONDITIONS AFFECTING INSTALLATION AND PERFORMANCE. PROCEED WITH INSTALLATION ONLY AFTER UNSATISFACTORY CONDITIONS HAVE BEEN CORRECTED.
 - VERIFY THAT NO FOREIGN OR DELETERIOUS MATERIAL OR LIQUID SUCH AS PAINT, PAINT WASHOUT, CONCRETE SLURRY, CONCRETE LAYERS OR CHUNKS, CEMENT, PLASTER, OILS, GASOLINE, DIESEL FUEL, PAINT THINNER, TURPENTINE, TAR, ROOFING COMPOUND, OR ACID HAS BEEN DEPOSITED IN SOIL WITHIN PLANTING AREAS.
 - DO NOT MIX OR PLACE SOILS IN FROZEN, WET, OR MUDDY CONDITIONS.

PLANTING DELIVERY, STORAGE, & HANDLING:

- BULK MATERIALS;
 - DO NOT DUMP OR STORE BULK MATERIALS NEAR STRUCTURES, UTILITIES, WALKWAYS AND PAVEMENTS, OR ON EXISTING TURF AREAS OR PLANTS.
- DO NOT PRUNE TREES AND SHRUBS BEFORE DELIVERY. PROTECT BARK, BRANCHES, AND ROOT SYSTEMS FROM SUN SCALD, DRYING, WIND BURN, SWEATING, WHIPPING, AND OTHER HANDLING AND TYING DAMAGE. DO NOT BEND OR BIND-TIE TREES OR SHRUBS IN SUCH A MANNER AS TO DESTROY THEIR NATURAL SHAPE. PROVIDE PROTECTIVE COVERING OF PLANTS DURING SHIPPING AND DELIVERY. DO NOT DROP PLANTS DURING DELIVERY AND HANDLING.
- HANDLE PLANTING STOCK BY ROOT BALL.
- DELIVER PLANTS AFTER PREPARATIONS FOR PLANTING HAVE BEEN COMPLETED AND INSTALL IMMEDIATELY. IF PLANTING IS DELAYED MORE THAN SIX HOURS AFTER DELIVERY, SET PLANTS AND TREES IN SHADED LOCATION, PROTECT FROM WEATHER AND MECHANICAL DAMAGE, AND KEEP ROOTS MOIST.
 - SET BALLED STOCK ON GROUND AND COVER BALL WITH SOIL, PEAT MOSS, SAWDUST, OR OTHER ACCEPTABLE MATERIAL.
 - WATER ROOT SYSTEMS OF PLANTS STORED ON-SITE DEEPLY AND THOROUGHLY WITH A FINE-MIST SPRAY. WATER AS OFTEN AS NECESSARY TO MAINTAIN ROOT SYSTEMS IN A MOIST, BUT NOT OVERLY WET CONDITION.

EXCAVATION FOR TREES & SHRUBS

- EXCAVATE CIRCULAR PLANTING PITS AS INDICATED IN DRAWINGS. TRIM PERIMETER OF BOTTOM LEAVING CENTER AREA OF BOTTOM RAISED SLIGHTLY TO SUPPORT ROOT BALL AND ASSIST IN DRAINAGE AWAY FROM CENTER. DO NOT FURTHER DISTURB BASE. ENSURE THAT ROOT BALL WILL SIT ON UNDISTURBED BASE SOIL TO PREVENT SETTLING. SCARIFY SIDES OF PLANTING PIT SMEARED OR SMOOTHED DURING EXCAVATION.
 - EXCAVATE APPROXIMATELY THREE TIMES AS WIDE AS BALL DIAMETER FOR BALLED AND BURLAPPED STOCK.
 - DO NOT EXCAVATE DEEPER THAN DEPTH OF THE ROOT BALL, MEASURED FROM THE ROOT FLARE TO THE BOTTOM OF THE ROOT BALL.
 - IF AREA UNDER THE PLANT WAS INITIALLY DUG TOO DEEP, ADD SOIL TO RAISE IT TO CORRECT LEVEL AND THOROUGHLY TAMP THE ADDED SOIL TO PREVENT SETTLING.
 - MAINTAIN REQUIRED ANGLES OF REPOSE OF ADJACENT MATERIALS AS SHOWN IN DRAWINGS. DO NOT EXCAVATE SUBGRADES OF ADJACENT PAVING, STRUCTURES, HARDCAPES, OR OTHER NEW OR EXISTING IMPROVEMENTS.
 - MAINTAIN SUPERVISION OF EXCAVATIONS DURING WORKING HOURS.
 - KEEP EXCAVATIONS COVERED OR OTHERWISE PROTECTED WHEN UNATTENDED BY INSTALLER'S PERSONNEL.
- SUBSOIL AND TOPSOIL REMOVED FROM EXCAVATIONS MAY BE USED AS PLANTING SOIL IF THEY CONFORM TO THE REQUIREMENTS LISTED IN THESE SPECIFICATIONS.
- NOTIFY OWNER'S PROJECT REPRESENTATIVE IF UNEXPECTED ROCK OR OBSTRUCTIONS DETRIMENTAL TO TREES OR SHRUBS ARE ENCOUNTERED IN EXCAVATIONS.
- NOTIFY OWNER'S PROJECT REPRESENTATIVE IF SUBSOIL CONDITIONS EVIDENCE UNEXPECTED WATER SEEPAGE OR RETENTION IN TREE OR SHRUB PLANTING PITS.

TREE & SHRUB PLANTING

- BEFORE PLANTING VERIFY THAT ROOT FLARE IS VISIBLE AT TOP OF ROOT BALL. IF ROOT FLARE IS NOT VISIBLE, REMOVE SOIL IN A LEVEL MANNER FROM THE ROOT BALL TO WHERE THE TOP-MOST ROOT EMERGES FROM THE TRUNK. AFTER SOIL REMOVAL TO EXPOSE ROOT FLARE, VERIFY THAT ROOT BALL STILL MEETS SIZE REQUIREMENTS. PLANT MATERIAL WITHOUT ROOT FLARE VISIBLE OR PLANTED TOO LOW WILL BE RE-PLANTED AT THE REQUEST OF THE LANDSCAPE ARCHITECT AT NO ADDITIONAL COST TO THE OWNER.
- PLANTS FOUND TO HAVE STEM GIRDLING ROOTS AND/OR KINKED ROOTS AT THE TIME OF PLANTING WILL BE REJECTED AND REPLACEMENTS SHALL BE PROVIDED AT NO ADDITIONAL COST TO THE OWNER.
- REMOVE ALL TWINE, STRING, WIRE, AND ALL OTHER NON-BIODEGRADABLE MATERIAL ENTIRELY FROM ROOT BALL AREA.
- REMOVE ONLY DEAD, DYING, OR BROKEN BRANCHES. DO NOT PRUNE FOR SHAPE. DO CUT TREE LEADERS.
- SET BALLED AND BURLAPPED STOCK PLUMB AND IN CENTER OF PLANTING PIT OR TRENCH WITH ROOT FLARE 2 INCHES ABOVE ADJACENT FINISH GRADES.
 - USE SOIL MATERIALS FROM EXCAVATION FOR BACKFILL.
 - CAREFULLY CUT AND REMOVE BURLAP, ROPE, AND WIRE BASKETS FROM THE ENTIRE ROOT BALL. REMOVE PALLETS, IF ANY, BEFORE SETTING. DO NOT USE PLANTING STOCK IF ROOT BALL IS CRACKED OR BROKEN BEFORE OR DURING PLANTING OPERATION.
 - BACKFILL AROUND ROOT BALL IN LAYERS, TAMPING TO SETTLE SOIL AND ELIMINATE VOIDS AND AIR POCKETS. WHEN PLANTING PIT IS APPROXIMATELY ONE-HALF FILLED, WATER THOROUGHLY BEFORE PLACING REMAINDER OF BACKFILL. REPEAT WATERING UNTIL NO MORE WATER IS ABSORBED.
 - CONTINUE BACKFILLING PROCESS. WATER AGAIN AFTER PLACING AND TAMPING FINAL LAYER OF SOIL.

TREE & SHRUB MATERIAL:

- GENERAL: FURNISH NURSERY-GROWN PLANTS TRUE TO GENUS, SPECIES, VARIETY, CULTIVAR, STEM FORM, SHEARING, AND OTHER FEATURES INDICATED IN PLANT SCHEDULE SHOWN AND DRAWINGS, AND WITH HEALTHY ROOT SYSTEMS DEVELOPED BY TRANSPLANTING OR ROOT PRUNING. PROVIDE WELL-SHAPED, FULLY BRANCHED, HEALTHY, VIGOROUS STOCK, DENSELY FOLIATED WHEN IN LEAF AND FREE OF DISEASE, PESTS, EGGS, LARVAE, AND DEFECTS SUCH AS KNOTS, SUN SCALD, INJURIES, ABRASIONS, AND DISFIGUREMENT.
 - TREES WITH DAMAGED, CROOKED, OR MULTIPLE LEADERS; TIGHT VERTICAL BRANCHES WHERE BARK IS SQUEEZED BETWEEN TWO BRANCHES OR BETWEEN BRANCH AND TRUNK ("INCLUDED BARK"); CROSSING TRUNKS; CUT-OFF LIMBS MORE THAN 3/4" IN DIAMETER; OR WITH STEM GIRDLING ROOTS WILL BE REJECTED.
 - COLLECTED STOCK: DO NOT USE PLANTS HARVESTED FROM THE WILD, FROM NATIVE STANDS, FROM AN ESTABLISHED LANDSCAPE PLANTING, OR NOT GROWN IN A STATE CERTIFIED NURSERY.
 - PLANT MATERIAL SHALL BE PROVIDED IN THE CONTAINER TYPE INDICATED IN THE DRAWINGS (B&B, CONTAINER, BARE ROOT, ETC.), UNLESS THE CONTRACTOR RECEIVES WRITTEN APPROVAL FROM THE LANDSCAPE ARCHITECT THAT SUBSTITUTION OF CONTAINER TYPE IS ACCEPTABLE.
- FURNISH TREES WITH ROOT BALLS MEASURED FROM TOP OF ROOT BALL. ROOT FLARE SHALL BE VISIBLE BEFORE PLANTING.
- SELECT STOCK FOR UNIFORM HEIGHT AND SPREAD.

PLANTING SOIL:

- PLANTING SOIL SHALL BE PLACED IN ONE CONTINUOUS VOLUME FOR THE WIDTH OF LANDSCAPE AREAS, AND A MINIMUM OF 3X THE DIAMETER OF THE ROOT BALL LENGTHWISE
- INSTALL PLANTING SOIL FOR PLANT BEDS IN 6" LIFTS, MINIMUM 8" DEPTH.
 - DO NOT APPLY PLANTING SOIL TO SATURATED OR FROZEN SUBGRADES.
 - PLANTING SOIL SHALL BE A MIX OF 6-PARTS TOPSOIL, 1-PART COMPOST (APPROVED FOR USE ON THE PROJECT), THOROUGHLY BLEND PLANTING SOIL OFF-SITE BEFORE SPREADING.
 - THE PROJECT WILL ACCEPT ONLY CLEAN, SALVAGED OR IMPORTED TOPSOIL CAPABLE OF PASSING THE 1" SIEVE, FREE OF ROCKS, DEBRIS, AND OF NOXIOUS WEEDS.
 - STRIPPED, SALVAGED, OR MINED TOPSOIL MUST BE TAKEN FROM THE TOP 6-INCHES OF THE A-HORIZON, HAVING A DARK BROWN TO BLACK COLOR WITH A GRANULAR STRUCTURE AND CLAY CONTENT OF LESS THAN 25%. VERIFIED WITH A RIBBON TEST THAT YIELDS NO MORE THAN 1-INCH.

METAL EDGING

- STANDARD PROFILE, COMMERCIAL-GRADE, EXTRUDED ALUMINUM EDGING, FABRICATED IN STANDARD LENGTHS WITH INTERLOCKING SECTIONS WITH LOOPS STAMPED FROM FACE OF SECTIONS TO RECEIVE STAKES.
 - BASIS OF DESIGN: CLEANLINE BY PERMALOC OR APPROVED EQUAL.
 - EDGING SIZE: 3/16-INCH-WIDE BY 5.5 INCHES DEEP
 - STAKES: ALUMINUM, ASTM 221, ALLOY 6061-T6, 18-INCHES LONG.
 - FINISH: BLACK DURAFLEX
 - MANUFACTURERS: SUBJECT TO COMPLIANCE WITH REQUIREMENTS, AVAILABLE MANUFACTURERS OFFERING PRODUCTS THAT MAY BE INCORPORATED INTO THE WORK INCLUDE BUT ARE NOT LIMITED TO THE FOLLOWING: CURV-RITE, INC., PERMALOC CORPORATION, RUSSELL, J.D. COMPANY (THE), SURE-LOC EDGING CORPORATION
- INSTALL METAL EDGE IN ACCORDANCE WITH MANUFACTURER'S WRITTEN INSTRUCTIONS.
- ENSURE THAT METAL EDGING IS PROPERLY INSTALLED AND SECURED BEFORE INSTALLING STONE MULCH.

STONE MULCH MATERIAL & INSTALLATION:

- SHALL BE HARD, DURABLE, STONE, WASHED FREE OF LOAM, SAND, CLAY, AND OTHER FOREIGN SUBSTANCES, OF THE FOLLOWING TYPE, SIZE RANGE, AND COLOR:
 - MATERIAL: ANGULAR WASHED STONE.
 - SIZE: 1-1/2" DIAMETER
 - DEPTH: 3" MINIMUM DEPTH PLACED IN ONE LIFT
 - COLOR RANGE: BLEND OF DARK GREY & BLUE TONES
 - BASIS OF DESIGN: 1-1/2" 'AMERICAN HERITAGE' AGGREGATE BY COUNTY MATERIALS.
- LIGHTLY COMPACT AREAS TO RECEIVE STONE MULCH
- INSTALL WEED BARRIER FABRIC IN ACCORDANCE WITH MANUFACTURER'S WRITTEN INSTRUCTIONS; COMPLETELY COVER AREA TO BE MULCHED, OVERLAPPING EDGES OF FABRIC LENGTHS A MINIMUM OF 6-INCHES AND SECURING SEAMS WITH GALVANIZED PINS. WEED BARRIER FABRIC SHALL BE WRAPPED VERTICALLY UP THE OUTSIDE EDGES OF SURROUNDING CONCRETE FLATWORK OR CURB AND SECURED IN PLACE. HOLD FABRIC 2" CLEAR OF TOP OF ADJACENT CURB AND CONCRETE FLATWORK SO IT IS NOT VISIBLE FROM SURFACE.
- PLACE AND FINISH STONE MULCH AS INDICATED IN DRAWINGS, ENSURING A SMOOTH, LEVEL TOP SURFACE FOR ALL STONE MULCH AREAS HELD APPROXIMATELY 1/2" BELOW THE TOP SURFACE OF ADJACENT PAVED AREAS OR METAL EDGING.

BARK MULCH MATERIAL & INSTALLATION

- TWICE-SHREDDED HARDWOOD BARK MULCH TO BE PROVIDED AS TOP-DRESSING FOR ALL AT-GRADE PLANTING BEDS IN LOCATIONS INDICATED ON PLANTING PLANS.
 - SIZE RANGE: MAXIMUM 2.5" TO 3"
 - COLOR: NATURAL, UN-DYED
 - PROVIDE 3" DEPTH MULCH FOR ALL PLANTING BEDS INDICATED AS BARK MULCH PLANTING BED.
- KEEP BARK MULCH 2" CLEAR OF ALL STEMS OF PLANT MATERIAL.

TURF AND NO-MOW SEEDING:

- DELIVERY:
 - DELIVER PACKAGED SEED MATERIALS IN ORIGINAL, UNOPENED CONTAINERS LABELED AS TO NAME AND ADDRESS OF SUPPLIER; SPECIFIC BLEND OF SEED; AND INDICATION OF CONFORMANCE WITH STATE AND FEDERAL LAWS, AS APPLICABLE.
- PROJECT CONDITIONS:
 - SEED DURING ONE OF THE FOLLOWING PERIODS.
 - SPRING SEEDING SEASON: APRIL 1 TO JUNE 15.
 - FALL SEEDING SEASON: AUGUST 15 TO OCTOBER 1.
- PRODUCTS
 - PROVIDE THE FOLLOWING FOR TURFGRASS SEED BASIS OF DESIGN: REINDEERS DELUXE 50 SEED MIX OR APPROVED EQUAL
 - PROVIDE THE FOLLOWING FOR NO-MOW TURFGRASS SEED BASIS OF DESIGN: REINDEERS NO-MOW SEED MIX OR APPROVED EQUAL
 - TURFGRASS SEED MIX TO BE FERTILIZED WITH 'SCOTT'S STARTER FERTILIZER' BY THE 'SCOTT'S MIRACLE-GRO COMPANY' OR APPROVED EQUAL.
- PROCEED WITH INSTALLATION ONLY AFTER UNSATISFACTORY CONDITIONS HAVE BEEN MET.
- REMOVE ANY AND ALL UNDESIRABLE VEGETATION THAT HAS GERMINATED IN THE AREAS TO BE SEEDDED OR SODDED. CONTRACTOR SHALL EVALUATE THE USE OF A BROAD SPECTRUM, NON-PERSISTENT GLYPHOPHATE-BASED HERBICIDE BASED ON SITE CONDITIONS.
 - DO NOT APPLY SEED UNTIL FIVE TO SEVEN DAYS AFTER LAST HERBICIDE TREATMENT.
- FINISH GRADING: GRADE AREAS TO A SMOOTH, UNIFORM SURFACE PLANE WITH LOOSE, UNIFORMLY FINE TEXTURE. GRADE TO WITHIN PLUS OR MINUS 1/4 INCH OF FINISH ELEVATION. ROLL AND RAKE. REMOVE RIDGES, AND FILL DEPRESSIONS TO MEET FINISH GRADES. LIMIT FINISH GRADING TO AREAS THAT CAN BE IMMEDIATELY SEEDDED AND STABILIZED WITH EROSION CONTROL MATERIAL.
- MOISTEN PREPARED AREA BEFORE SEEDING IF SOIL IS DRY. WATER THOROUGHLY AND ALLOW SURFACE DRY BEFORE SEEDING OR SODDING. DO NOT CREATE MUDDY SOIL.
- NO SEEDING SHALL OCCUR ON FROZEN GROUND OR AT TEMPERATURES LOWER THAN 32 DEGREES FAHRENHEIT OR IN THE FOLLOWING 5 DAYS AFTER PLANNED SEEDING OR SODDING.
- SEEDING RATES TO BE PERFORMED IN ACCORDANCE WITH SEED SUPPLIER RECOMMENDATIONS.

CLEAN-UP AND PROTECTION

- DURING PLANTING, KEEP ADJACENT PAVING AND CONSTRUCTION CLEAN AND WORK AREA IN AN ORDERLY CONDITION.
- PROTECT PLANTS FROM DAMAGE DUE TO LANDSCAPE OPERATIONS AND OPERATIONS OF OTHER CONTRACTORS AND TRADES. MAINTAIN PROTECTION DURING INSTALLATION. TREAT, REPAIR, OR REPLACE DAMAGED PLANTINGS.
- AFTER INSTALLATION REMOVE ALL NURSERY TAGS, NURSERY STAKES, TIE TAPE, LABELS, WIRE, STRING, AND OTHER DEBRIS FROM PLANT MATERIAL, PLANTING AREAS, AND PROJECT SITE.



WILDE SUBARU
E MORELAND BLVD & MANHATTAN DR
WAUKESHA, WI
LANDSCAPE SPECIFICATIONS



ISSUANCE	DATE
90% PLANS	09/11/23

NO. REVISION	DATE

PROJECT NO:	21736
DESIGN DATE:	----
PLOT DATE:	2023.10.25
DRAWN BY:	----
CHECKED BY:	----
APPROVED BY:	----

SHEET NO:
L300