

12"x8" TAPPING TEE AND GATE VALVE VALVE BOX #1
CONNECT AFTER SAFE WATER SAMPLE & PRESSURE TEST
PRIOR TO CONSTRUCTION OF 8" WATERMAIN, CONTRACTOR SHALL EXPOSE EXIST 12" WATERMAIN & DETERMINE EXACT LOCATION & ELEVATION.

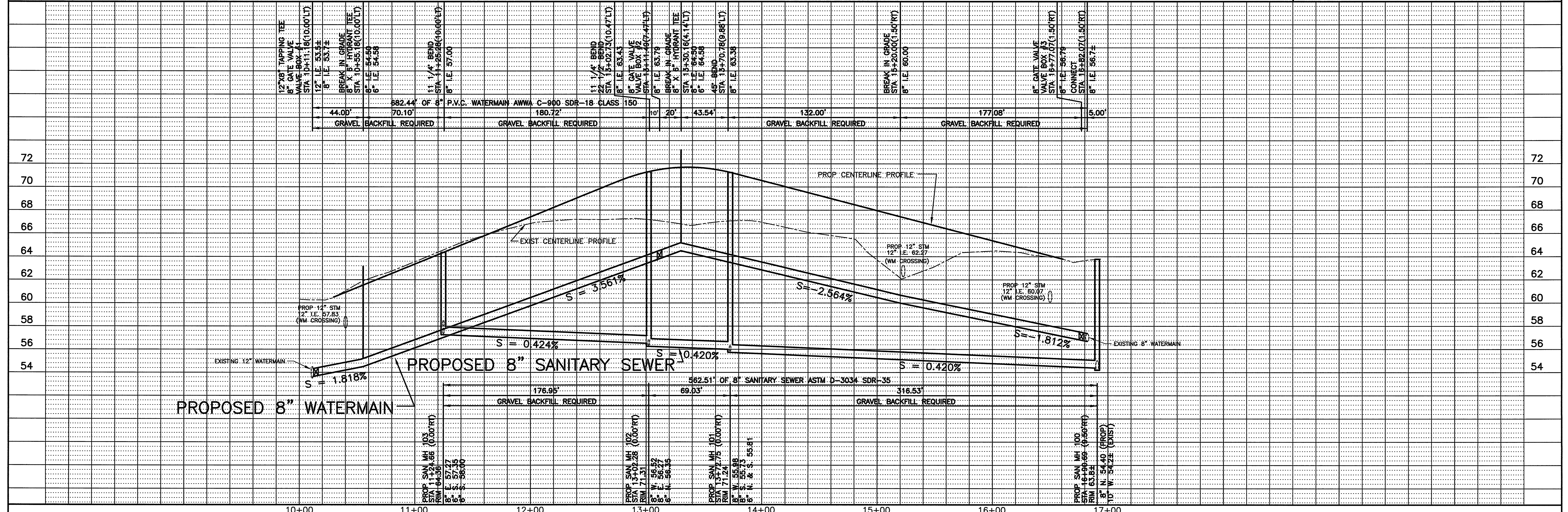
8" x 6" HYDRANT TEE
6" GATE VALVE
VALVE BOX #1A
HYDRANT NO. 1
STA 10+55.18 (21.50'LT)
NOZZLE EL 63.50
FLANGE EL 62.00
SHOE EL 54.75
0.5' EXTENSION

8" x 6" HYDRANT TEE
6" GATE VALVE
VALVE BOX #2A
HYDRANT NO. 2
STA 13+31.30 (21.50'LT)
NOZZLE EL 73.50
FLANGE EL 72.00
SHOE EL 64.75
0.5' EXTENSION

8" CONNECTION TO EXIST 8" MAIN (DRY CONNECT)
CONNECT AFTER SAFE WATER SAMPLE & PRESSURE TEST
PRIOR TO CONSTRUCTION OF 8" WATERMAIN, CONTRACTOR SHALL EXPOSE EXIST 12" WATERMAIN & DETERMINE EXACT LOCATION & ELEVATION.

THE LOCATION OF UNDERGROUND STRUCTURES OR FACILITIES SHOWN ON THE PLANS ARE BASED ON AVAILABLE RECORDS AT THE TIME OF PLAN PREPARATION & ARE NOT GUARANTEED TO BE COMPLETE OR CORRECT. THE CONTRACTOR IS RESPONSIBLE FOR CONTACTING ALL UTILITIES 72 HOURS PRIOR TO CONSTRUCTION TO DETERMINE THE EXACT LOCATION OF ALL FACILITIES AND TO PROVIDE ADEQUATE PROTECTION DURING THE COURSE OF THE WORK.

ESTIMATE OF QUANTITIES	
8" SANITARY SDR-35 (GRAVEL BKFL)	563 LIN FT
6" SANITARY LATERAL	562 LIN FT
48" SANITARY SEWER MANHOLE	4 EACH
8" WATERMAIN (GRAVEL BKFL)	682 LIN FT
1 1/4" WATER LATERAL	502 LIN FT
6" WATER LATERAL	25 LIN FT
6" HYDRANT BRANCH	29 LIN FT
HYDRANT	2 EACH
8" GATE VALVE & VALVE BOX	3 EACH
6" GATE VALVE & VALVE BOX	2 EACH

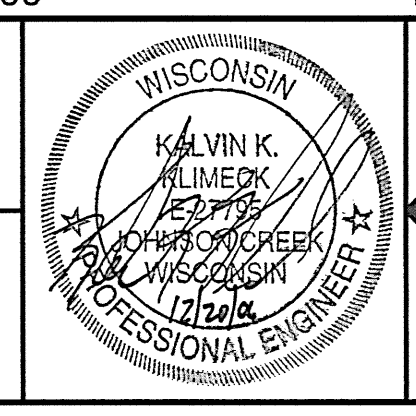


NO.	REVISIONS	BY	DATE
1	ADDED OWNERS REVISIONS	KKK	8-04-06
2	ADDED GENERAL REVISIONS	KKK	11-07-06
3	ADDED GENERAL REVISIONS	KKK	12-20-06

DESIGNED BY:
K. K. KLIMECK
DRAWN BY:
K. K. KLIMECK
CHECKED BY:
K. K. KLIMECK

SCALE:
1" = 40' HORIZ.
1" = 4' VERT.

DATE:
FEBRUARY 24, 2006



PIONEER ENGINEERING AND SURVEYING, L.L.C.
CONSULTANTS IN SUBDIVISIONS AND COMMERCIAL DEVELOPMENTS
3902 C.T.H. "B"
JOHNSON CREEK, WI. 53038
(920) 699 - 3330 FAX: 699 - 3332

THE RIDGE AT WOODLAND CREEK CONDOMINIUMS SANITARY SEWER & WATERMAIN PLAN

IN: WOODLAND HILLS CIRCLE
FROM: STA 11+25±
TO: STA 16+90±

MUNIC. PROJ. NO.	PIONEER PROJ. NO.
CITY OF WAUKESHA	05-05
APPROVED BY	PIONEER SHT. NO.
CITY ENGINEER	PAGE 2 OF 2
DATE	PIONEER FILE NO.
	05-05

D:\0505\SAN2