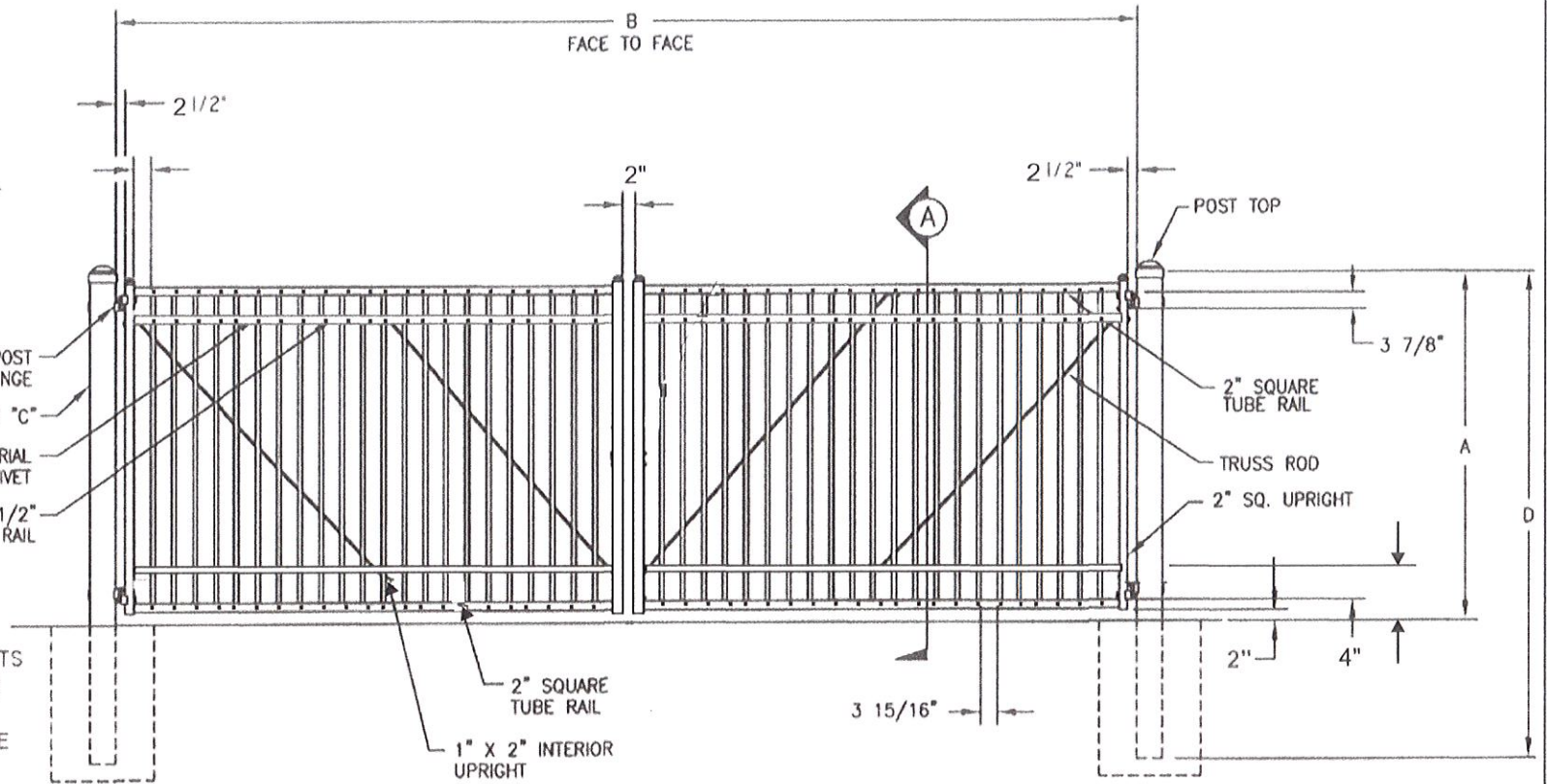


NOM HEIGHT (A)
3' - 0"
3' - 6"
4' - 0"
5' - 0"
6' - 0"
7' - 0"
8' - 0"

- SQUARE POST HINGE
- SQUARE POST "C"
- INDUSTRIAL DRIVE RIVET
- 1 3/8" X 1 1/2" U-CHANNEL RAIL



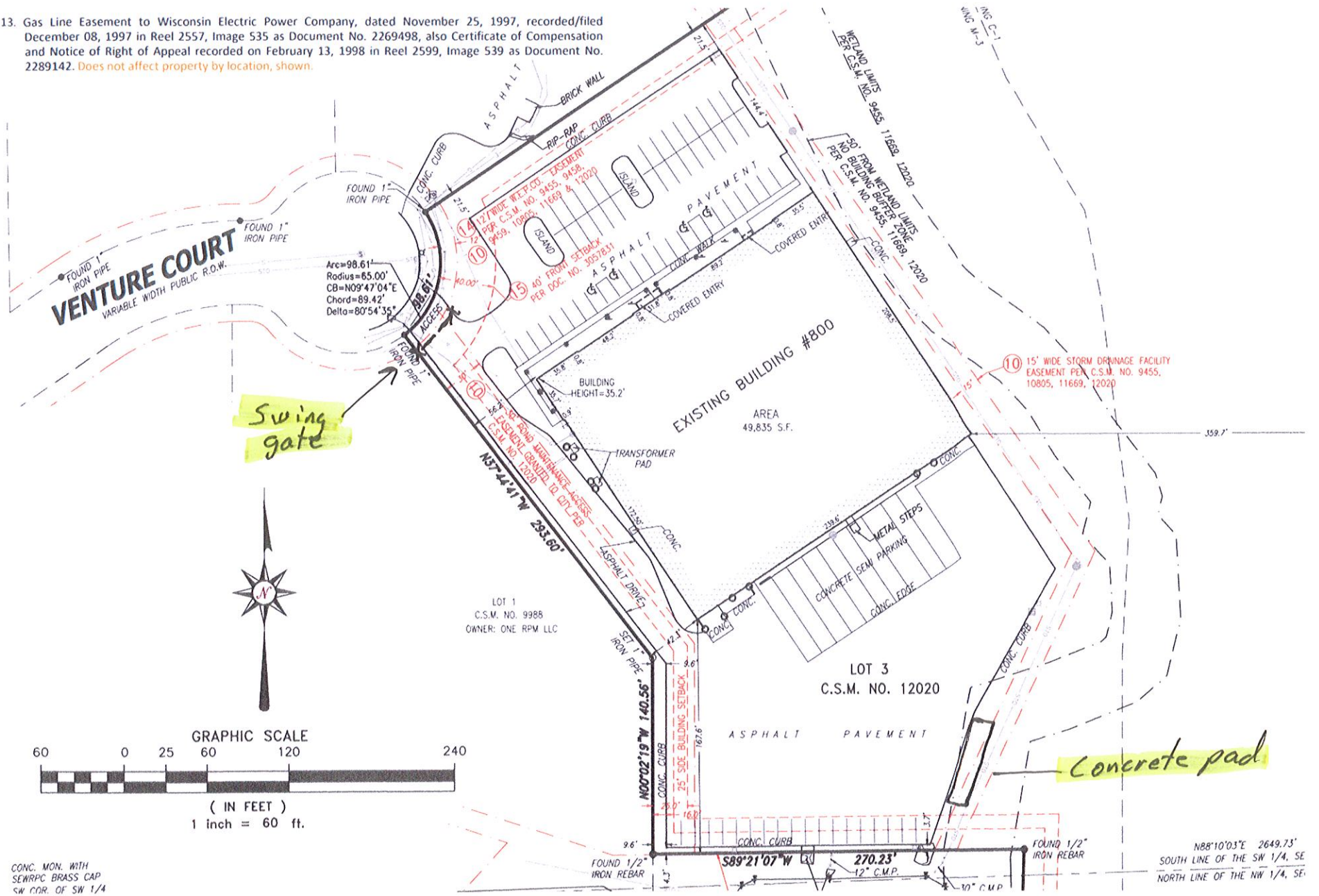
- B _____" FACE TO FACE OF POSTS
- C _____" POST SIZE _____ GAUGE
- D _____" POST LENGTH
- E _____" PICKET SIZE _____ GAUGE

GATE SPECIFICATIONS

- NOTES:
- SPECIFICATIONS SHOWN CAN BE CHANGED ONLY BY THE MANUFACTURER.
 - FOOTING WIDTH TO BE (4)X POST WIDTH.

SUBMITTED BY	SUBMITTED TO	ABERDEEN 3 RAIL DOUBLE SWING GATE 3/4" OR 1" PICKETS 24' OPENING OR LARGER		CONTRACTOR	IRONWORLDFENCING.COM
		JOB/PROJECT		ARCHITECT	
				ENGINEER	
				DWG NO	IWF 1144 - 13RL

13. Gas Line Easement to Wisconsin Electric Power Company, dated November 25, 1997, recorded/filed December 08, 1997 in Reel 2557, Image 535 as Document No. 2269498, also Certificate of Compensation and Notice of Right of Appeal recorded on February 13, 1998 in Reel 2599, Image 539 as Document No. 2289142. Does not affect property by location, shown.



CONC. MON. WITH SEWRPC BRASS CAP SW COR. OF SW 1/4

N88°10'03"E 2649.73'
SOUTH LINE OF THE SW 1/4, SE
NORTH LINE OF THE NW 1/4, SE