

1

2

3

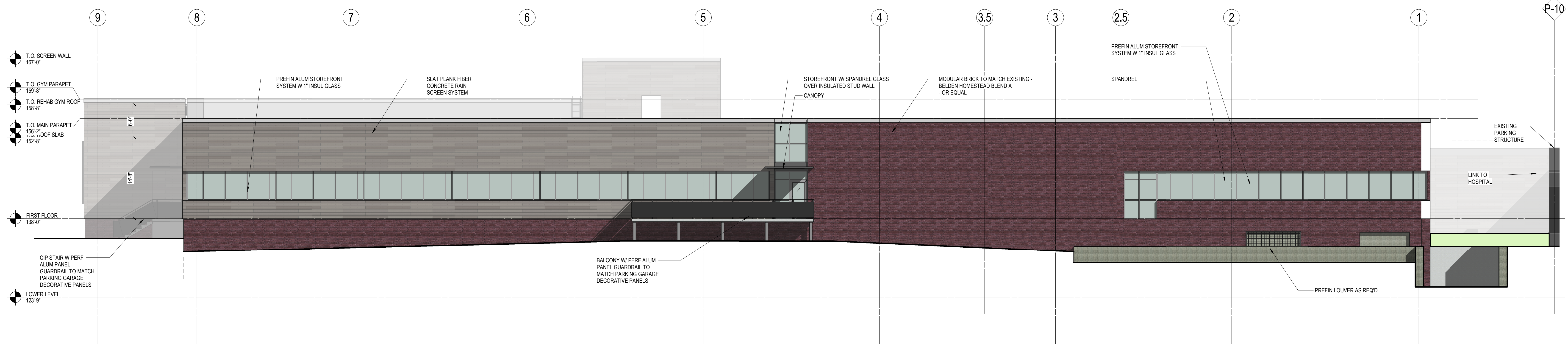
4

5

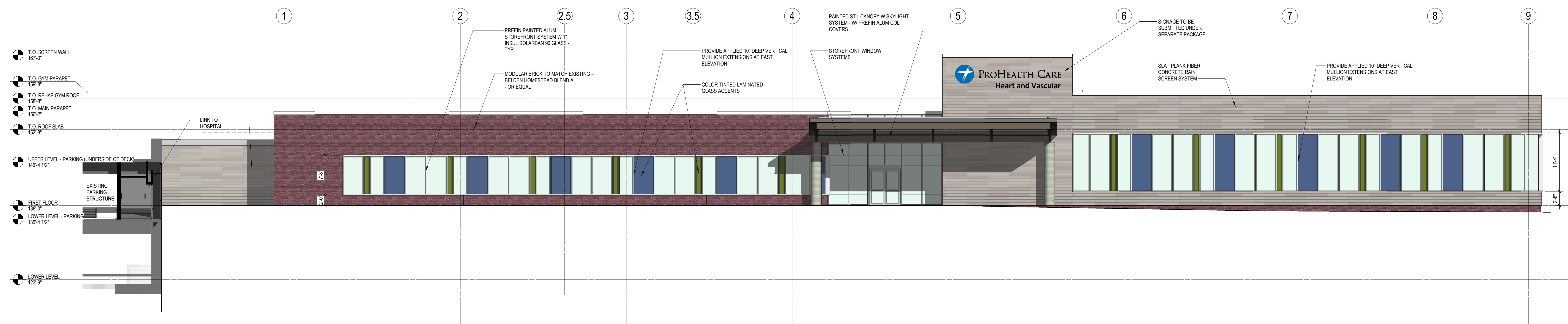
6

7

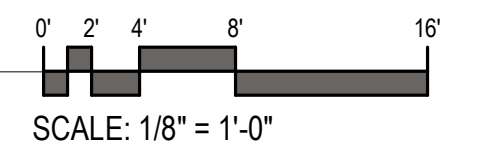
8



**2** West Elevation  
1/8" = 1'-0"



**1** East Elevation  
1/8" = 1'-0"



epstein uhen : architects

**milwaukee** 333 East Chicago Street  
Milwaukee, Wisconsin 53202  
telephone 414.271.5350

**madison** 309 West Johnson Street, Suite 202  
Madison, Wisconsin 53703  
telephone 608.442.5350

KEY PLAN

ISSUANCE AND REVISIONS

| DATE       | DESCRIPTION                          |
|------------|--------------------------------------|
| 06/28/2017 | PLAN COMMISSION - PRELIMINARY REVIEW |

**PROGRESS DOCUMENTS  
NOT FOR CONSTRUCTION**

These documents reflect progress and intent and may be subject to change, including additional detail. These are not final construction documents and should not be used for final bidding or construction-related purposes.

PROJECT INFORMATION

**WMH HEART AND VASCULAR CENTER**

725 American Avenue  
Waukesha, WI 53188

PROJECT NUMBER: 16375  
PROJECT MANAGER: TB

SHEET INFORMATION

SHEET NAME:  
SHEET NUMBER:

DESIGN EXTERIOR  
ELEVATIONS  
**DE200**

© Epstein Uhen Architects, Inc.