



eppstein uhen : architects

milwaukee 333 East Chicago Street Milwaukee, Wisconsin 53202 414.271.5350
madison 309 West Johnson Street, Suite 202 Madison, Wisconsin 53703 608.442.5350
des moines 699 Walnut Street, Suite 400 Des Moines, Iowa 50309 515.274.5840
denver 1899 Wynkoop Street, Suite 300 Denver, Colorado 80202 303.595.4500

PROJECT INFORMATION

WAUKESHA MEMORIAL HOSPITAL - NORTH WING

725 AMERICAN AVENUE, WAUKESHA, WI 53188

ISSUANCE AND REVISIONS

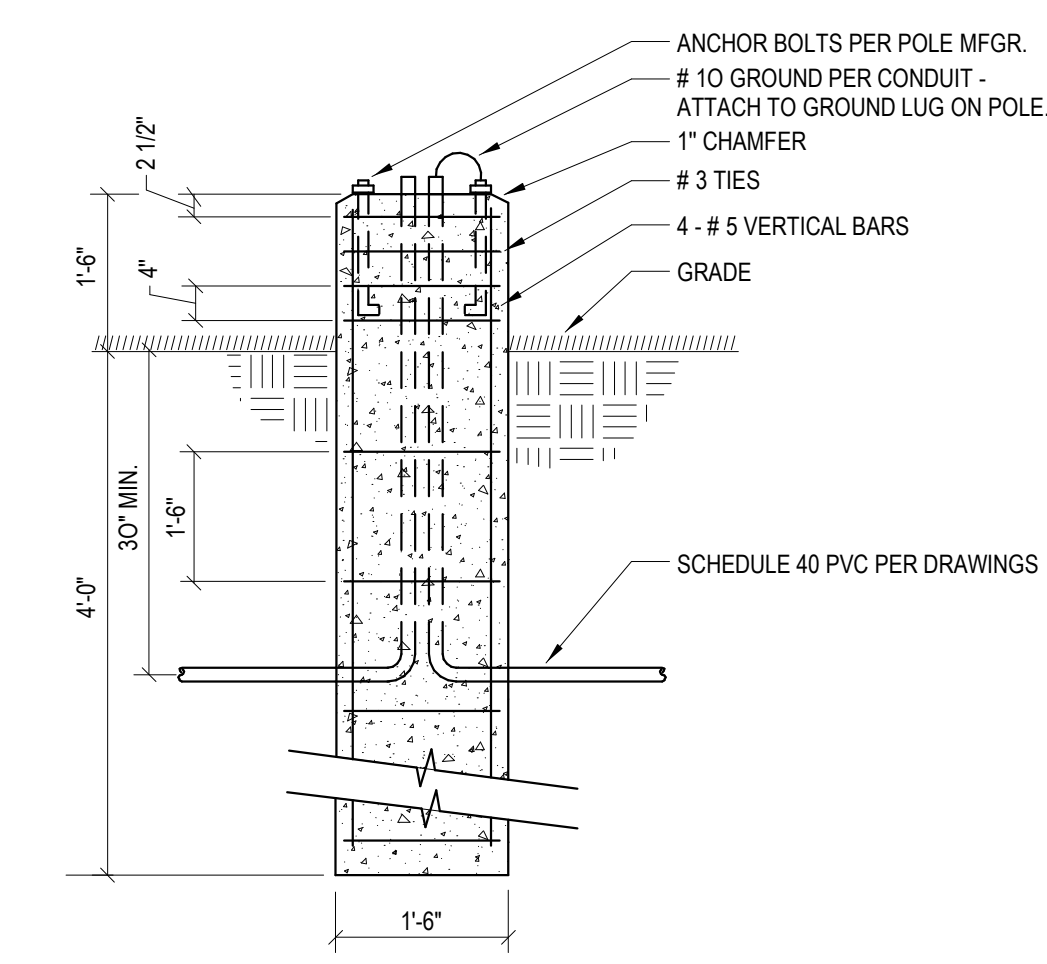
Table with 2 columns: DATE, DESCRIPTION. Row 1: 12/20/2018 PLAN COMMISSION SUBMITTAL

C



engineering consultants 316 N. Milwaukee St., Suite 500 | Milwaukee, WI 53202 T: 414.273.1432 | www.rtmassociates.com

KEY PLAN



2 FIXTURE TYPES "OA" POLE BASE DETAIL SCALE: N.T.S.

Lighting Fixture Schedule table with columns: TYPE, DESCRIPTION, LIGHT SOURCE, INPUT, MANUFACTURER, SPECIFIED FIXTURE, MODEL NO., REMARKS. Includes rows for Downlight, Linear Recessed, Linear Surface, and LED Wall Sconce.

Statistics table with columns: Description, Symbol, Avg, Max, Min, Max/Min, Avg/Min. Row 1: Canopy & Drive, 1, 9.4 fc, 19.5 fc, 1.2 fc, 16.3:1, 7.8:1

1 CANOPY/ENTRANCE LIGHTING CONCEPT 1/8" = 1'-0"

SHEET INFORMATION

PROGRESS DOCUMENTS NOT FOR CONSTRUCTION

These documents reflect progress and intent and may be subject to change, including additional detail. These are not final construction documents and shall not be used for final bidding or construction-related purposes.

PROJECT MANAGER R.K.

PROJECT NUMBER 418190

CANOPY/ENTRANCE LIGHTING CONCEPT

ES101A

© Eppstein Uhen Architects, Inc.