

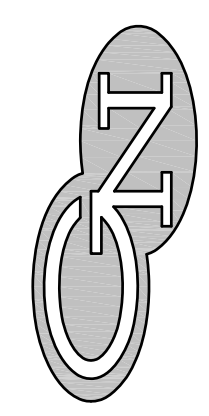
**PRELIMINARY**  
NOT FOR  
CONSTRUCTION

APPROVED BY: \_\_\_\_\_ DATE: \_\_\_\_\_  
DISCLAIMER: Information on this plan is deemed to be accurate, but is not guaranteed. \*As Built\* dimensions may vary slightly.

**REVISIONS**

Rev.	Date	Description	By

**GERALD NELL INC.**  
W229 N1680 WESTWOOD DRIVE  
WAUKESHA, WI 53186-1152  
262-513-3750



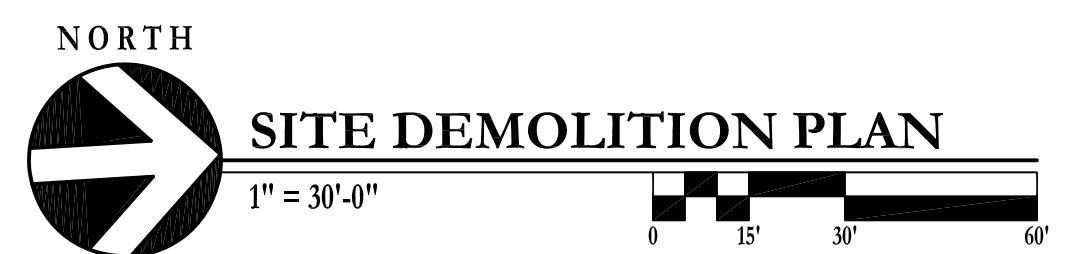
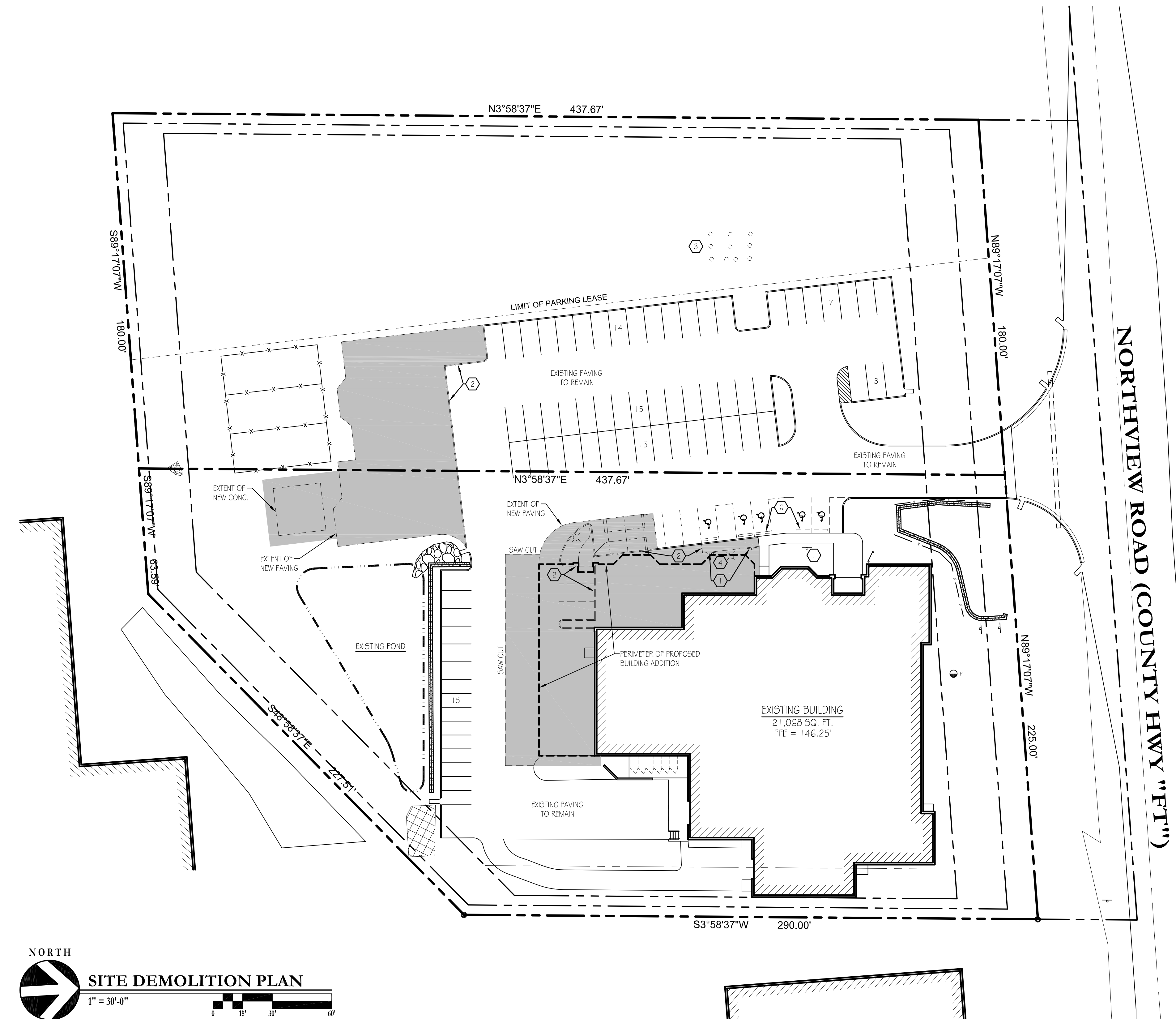
**H.A.W.S.**  
**701 NORTHVIEW ROAD**  
**WAUKESHA, WISCONSIN**

Drawn By  
BLM  
Date  
05-09-16  
Scale  
1" = 30'-0"  
Job Number  
  
Sheet Name  
**SITE DEMOLITION PLAN**  
Sheet Number  
**A1.1**  
SHEET OF TOTAL SHEETS

**SITE PLAN LEGEND**

---	PROPERTY LINE
- - -	SETBACK LINE
○	IRON PIPE
■	AREA DISTURBED BY CONSTRUCTION

- SITE DEMOLITION KEYED NOTES**
- ① REMOVE EXISTING ADA PARKING SIGNS AND SAVE FOR RELOCATION. (BY SITEWORK CONTRACTOR)
  - ② REMOVE EXISTING CONCRETE WALKS AND CURBING. (BY SITEWORK CONTRACTOR)
  - ③ REMOVE EXISTING WOOD DECK. (BY OWNER)
  - ④ REMOVE EXISTING LIGHT AND POLE. (BY ELECTRICAL CONTRACTOR). POLE BASE REMOVED BY SITEWORK CONTRACTOR.
  - ⑤ SEE CIVIL DRAWINGS FOR WORK INVOLVING NEW OR EXISTING DRAINS / CULVERTS.
  - ⑥ REMOVE/SALVAGE EXISTING WHEEL STOPS. SEE A1.2 SITE PLAN FOR NEW LOCATIONS. (TYP. OF 5, BY SITEWORK CONTRACTOR)



**PRELIMINARY**  
NOT FOR  
CONSTRUCTION

COPYRIGHT GERALD NELL INC., 2016 ALL RIGHTS RESERVED. THIS DRAWING IS NOT TO BE REPRODUCED, CHANGED, DISSEMINATED OR ASSIGNED TO ANY PARTY IN ANY FORM OR MANNER WITHOUT FIRST OBTAINING THE WRITTEN PERMISSION OF GERALD NELL INC. THE CLIENT AGREES TO INDEMNIFY AND HOLD GERALD NELL INC. HARMLESS FROM ANY DAMAGES, LIABILITY, OR COST, INCLUDING ATTORNEY'S FEES AND COSTS OF DEFENSE ARISING FROM ANY CHANGES OR ALTERATIONS MADE BY ANYONE OTHER THAN GERALD NELL INC. OR FROM ANY REUSE OF THE DRAWINGS OR DATA WITHOUT THE PRIOR WRITTEN CONSENT OF GERALD NELL INC.