



MSI GENERAL CORPORATION  
 P.O. BOX 7  
 OCONOMOWOC, WI 53066  
 PHONE: 262-367-3661  
 FAX: 262-367-7390  
 WWW.MSIGENERAL.COM  
 SINGLE SOURCE RESPONSIBILITY™

ISSUE DATES:  
 Proposal: 10/31/18  
 Bid:  
 Contract:  
 State Submittal / Permit:  
 As-Built:

REVISIONS:

1	P. C. SUBMITTAL	02-25-19
2	ADDR. CITY COMMENTS	05-10-19
3		
4		
5		
6		
7		
8		
9		
10		
11		
12		
13		
14		
15		
16		
17		
18		
19		
20		
21		
22		
23		
24		
25		
26		
27		
28		
29		
30		

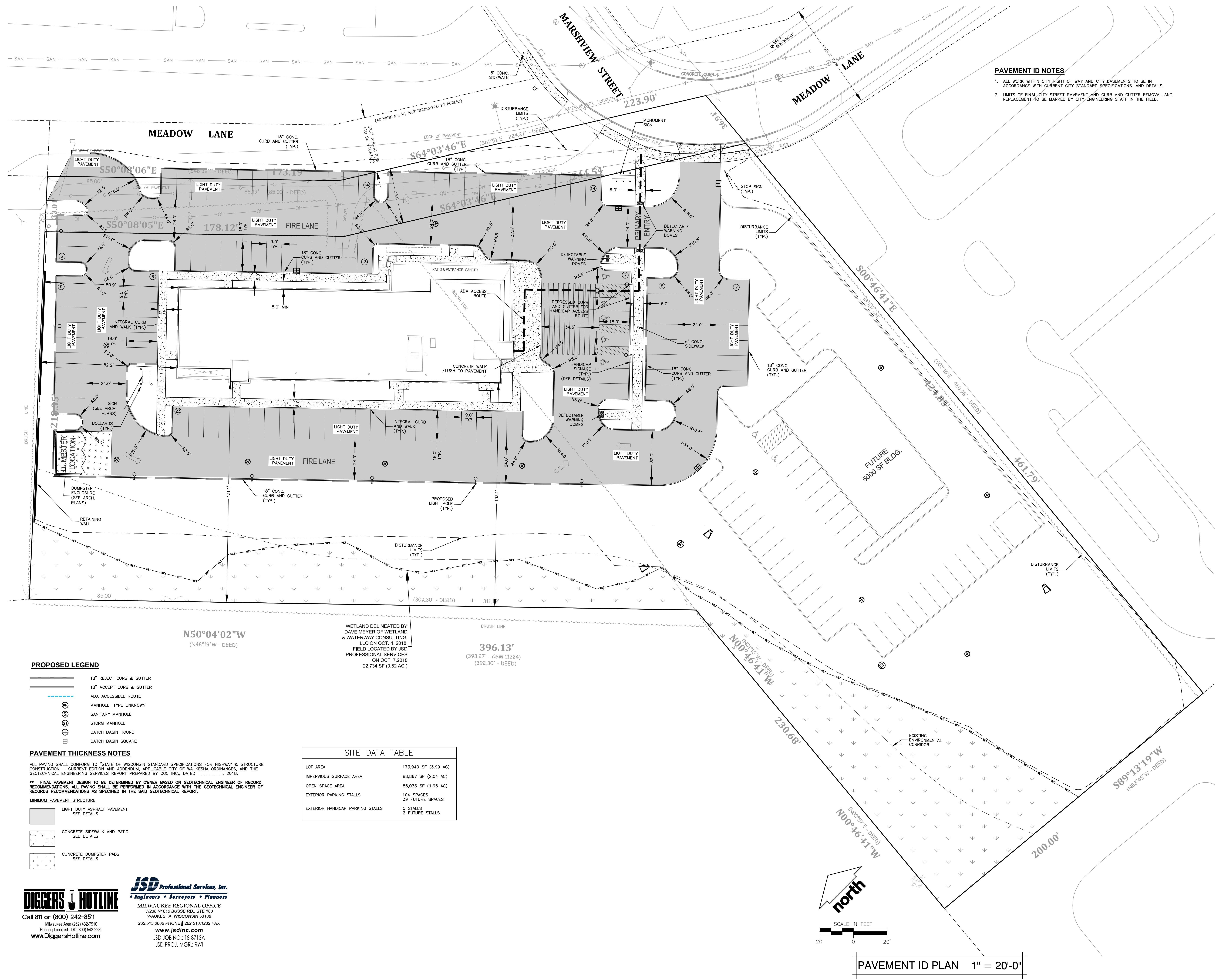
KEY PLAN



PROJECT ADDRESS:  
 PROJECT NAME  
 avid™ hotels  
 STREET ADDRESS  
 Marshview Street  
 CITY/STATE / ZIP  
 Waukesha, WI 53186

ALL WORK TO BE COMPLETED AS SHOWN, AND IN ACCORDANCE WITH THE LATEST EDITION OF THE MSI GENERAL MASTER SPECIFICATION

Architect: CJO  
 Engineer: JSD  
 Reviewed By: XXX  
 Sheet Title:  
 PAVEMENT ID PLAN  
 Sheet Number:  
 C-101  
 Project Number: P12269  
 P12269



**PAVEMENT ID NOTES**  
 1. ALL WORK WITHIN CITY RIGHT OF WAY AND CITY EASEMENTS TO BE IN ACCORDANCE WITH CURRENT CITY STANDARD SPECIFICATIONS, AND DETAILS.  
 2. LIMITS OF FINAL CITY STREET PAVEMENT AND CURB AND GUTTER REMOVAL AND REPLACEMENT TO BE MARKED BY CITY ENGINEERING STAFF IN THE FIELD.

N50°04'02"W  
 (N48°19' W - DEED)

WETLAND DELINEATED BY  
 DAVE MEYER OF WETLAND  
 & WATERWAY CONSULTING,  
 LLC ON OCT. 4, 2018.  
 FIELD LOCATED BY JSD  
 PROFESSIONAL SERVICES  
 ON OCT. 7, 2018  
 22,734 SF (0.52 AC.)

396.13'  
 (393.27' - CSM 11224)  
 (392.30' - DEED)

- PROPOSED LEGEND**
- 18" REJECT CURB & GUTTER
  - 18" ACCEPT CURB & GUTTER
  - ADA ACCESSIBLE ROUTE
  - MANHOLE, TYPE UNKNOWN
  - SANITARY MANHOLE
  - STORM MANHOLE
  - CATCH BASIN ROUND
  - CATCH BASIN SQUARE

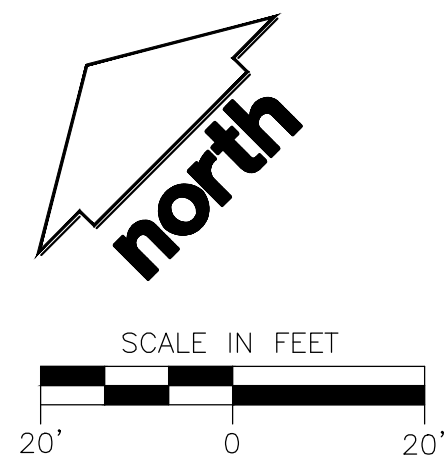
**PAVEMENT THICKNESS NOTES**  
 ALL PAVING SHALL CONFORM TO "STATE OF WISCONSIN STANDARD SPECIFICATIONS FOR HIGHWAY & STRUCTURE CONSTRUCTION - CURRENT EDITION AND ADDENDUM, APPLICABLE CITY OF WAUKESHA ORDINANCES, AND THE GEOTECHNICAL ENGINEERING SERVICES REPORT PREPARED BY CJC INC., DATED \_\_\_\_\_, 2018."  
 \*\*FINAL PAVEMENT DESIGN TO BE DETERMINED BY OWNER BASED ON GEOTECHNICAL ENGINEER OF RECORD RECOMMENDATIONS. ALL PAVING SHALL BE PERFORMED IN ACCORDANCE WITH THE GEOTECHNICAL ENGINEER OF RECORDS RECOMMENDATIONS AS SPECIFIED IN THE SAID GEOTECHNICAL REPORT.

- MINIMUM PAVEMENT STRUCTURE**
- LIGHT DUTY ASPHALT PAVEMENT  
SEE DETAILS
  - CONCRETE SIDEWALK AND PATIO  
SEE DETAILS
  - CONCRETE DUMPSTER PADS  
SEE DETAILS

SITE DATA TABLE	
LOT AREA	173,940 SF (3.99 AC)
IMPERVIOUS SURFACE AREA	88,867 SF (2.04 AC)
OPEN SPACE AREA	85,073 SF (1.95 AC)
EXTERIOR PARKING STALLS	104 SPACES 39 FUTURE SPACES
EXTERIOR HANDICAP PARKING STALLS	5 STALLS 2 FUTURE STALLS

**JSD Professional Services, Inc.**  
 Engineers • Surveyors • Planners  
 MILWAUKEE REGIONAL OFFICE  
 W236 N1610 BUSSE RD., STE 100  
 WAUKESHA, WISCONSIN 53188  
 262.513.0668 PHONE | 262.513.1232 FAX  
 www.jsdinc.com  
 JSD JOB NO.: 18-0713A  
 JSD PROJ. MGR.: RWI

**DIGGERS HOTLINE**  
 Call 811 or (800) 242-8511  
 Milwaukee Area (262) 432-7910  
 Hearing Impaired TDD (800) 542-2289  
 www.DiggersHotline.com



PAVEMENT ID PLAN 1" = 20'-0"

MANAGERS

ENGINEERS

CONTRACTORS

ARCHITECTS